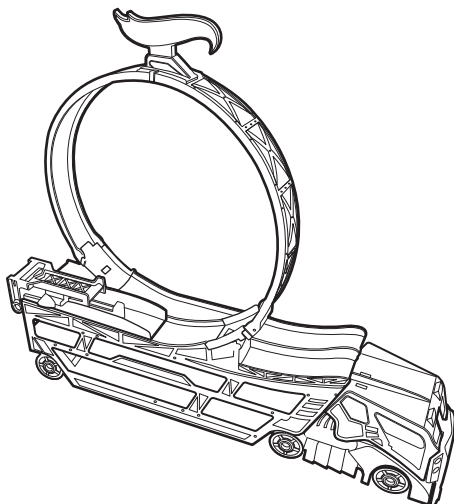


INSTRUCTIONS



STUNT & GO™



4+

service.mattel.com

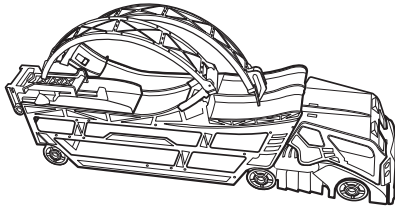
HOTWHEELS.COM



DWN56-0970
1101190927-D0M

PLEASE KEEP THESE INSTRUCTIONS FOR FUTURE
REFERENCE AS THEY CONTAIN IMPORTANT INFORMATION.

CONTENTS

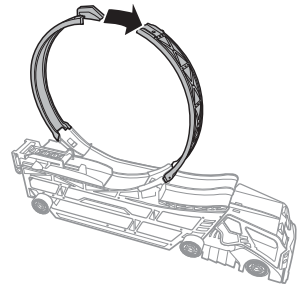


SET UP

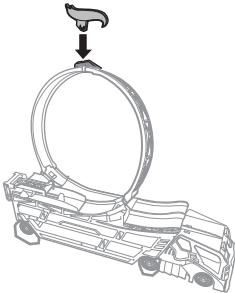
1. OPEN LOOP SECTIONS.



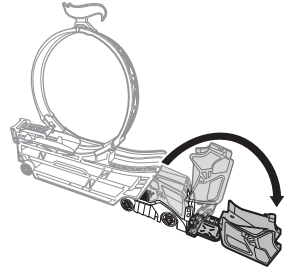
2. CONNECT TOP OF LOOP.



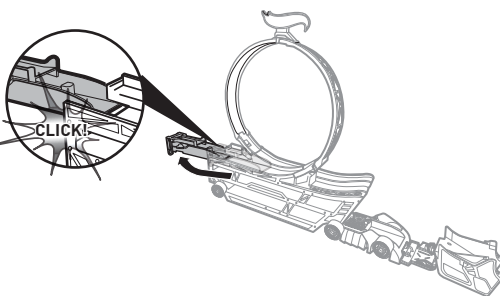
3. ATTACH HOT WHEELS® SIGN.



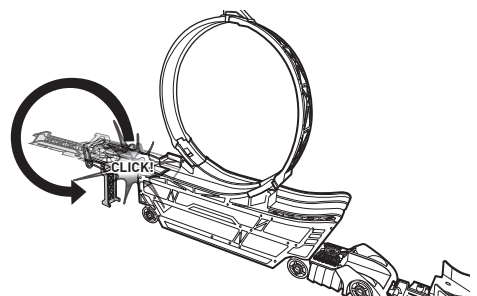
4. FOLD OPEN TRUCK CAB TO MAKE A LAUNCHING RAMP!



5a. PULL OUT THE LAUNCHER.

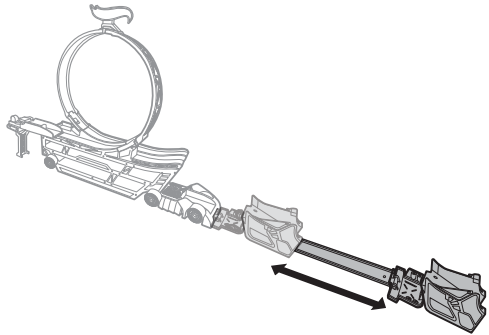


5b. FOLD DOWN AND LOCK THE SUPPORT.



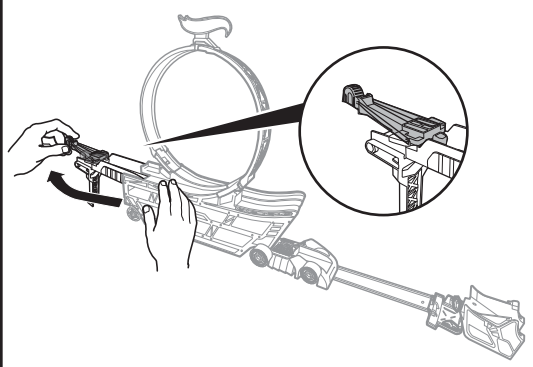
TO PLAY

1. ADJUST THE JUMP DISTANCE.

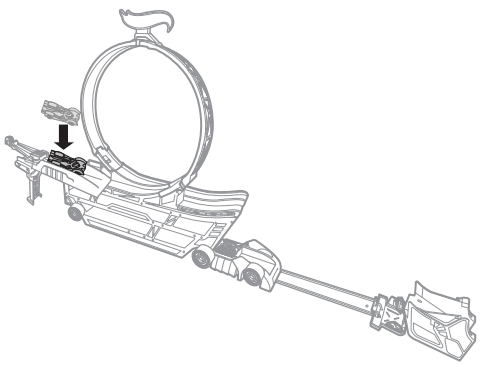


IMPORTANT: KEEP CAB AND TRACK STRAIGHT AND ALIGNED TO THE LAUNCHER.

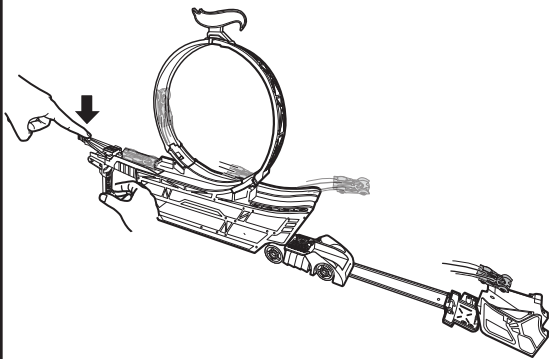
2. PULL BACK AND LOCK LAUNCHER INTO PLACE.



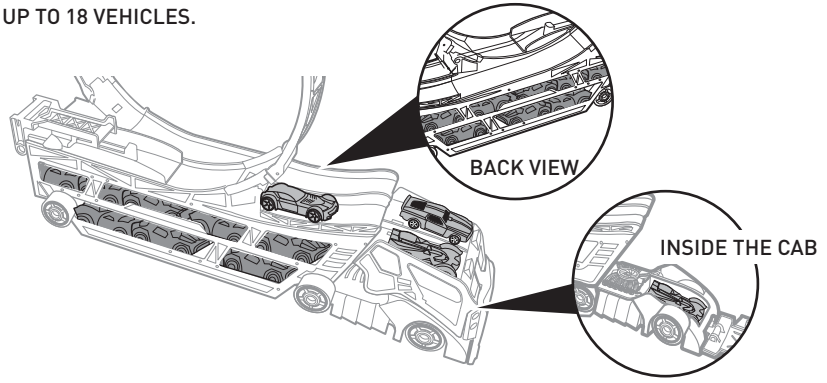
3. LOAD VEHICLE.



4. LAUNCH THROUGH THE LOOP AND NAIL THE STUNT JUMP!



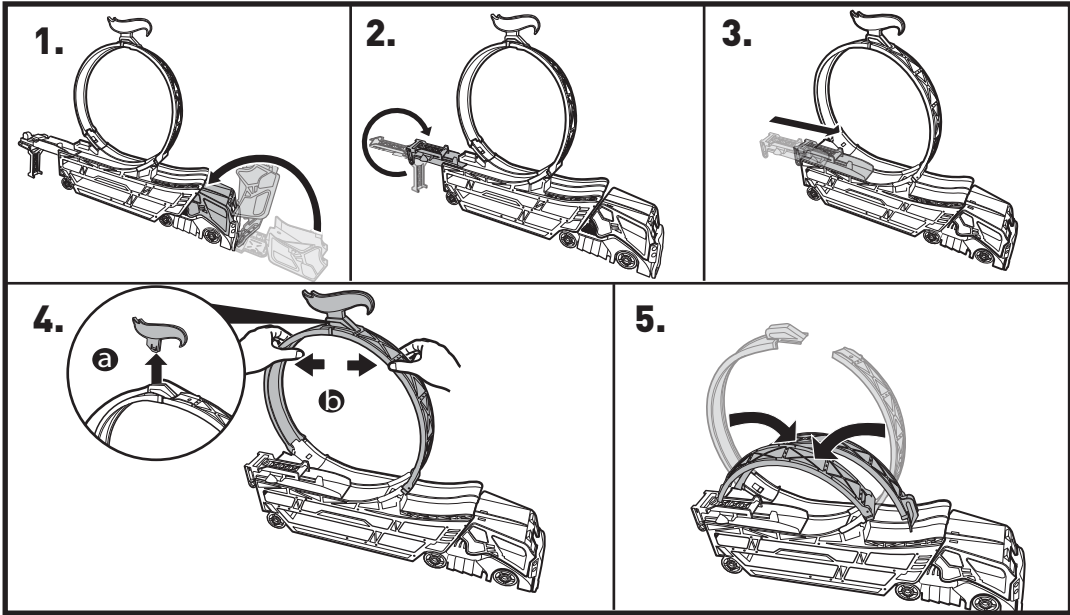
5. HOLDS UP TO 18 VEHICLES.



NOT FOR USE WITH SOME HOT WHEELS® VEHICLES.

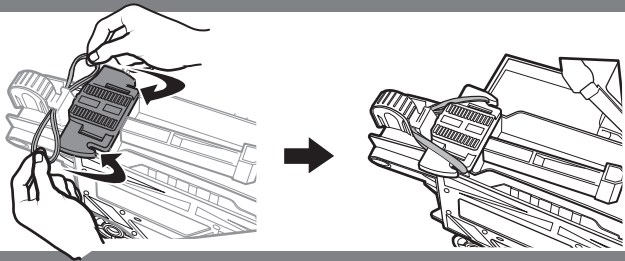
1 VEHICLE INCLUDED. ADDITIONAL VEHICLES SOLD SEPARATELY.

STORAGE



REPLACING RUBBER BAND

HOOK RUBBER BAND INTO SLOTS ON LAUNCHER.



MORE WAYS TO PLAY

CONNECTS TO OTHER HOT WHEELS® SETS (SOLD SEPARATELY).

