

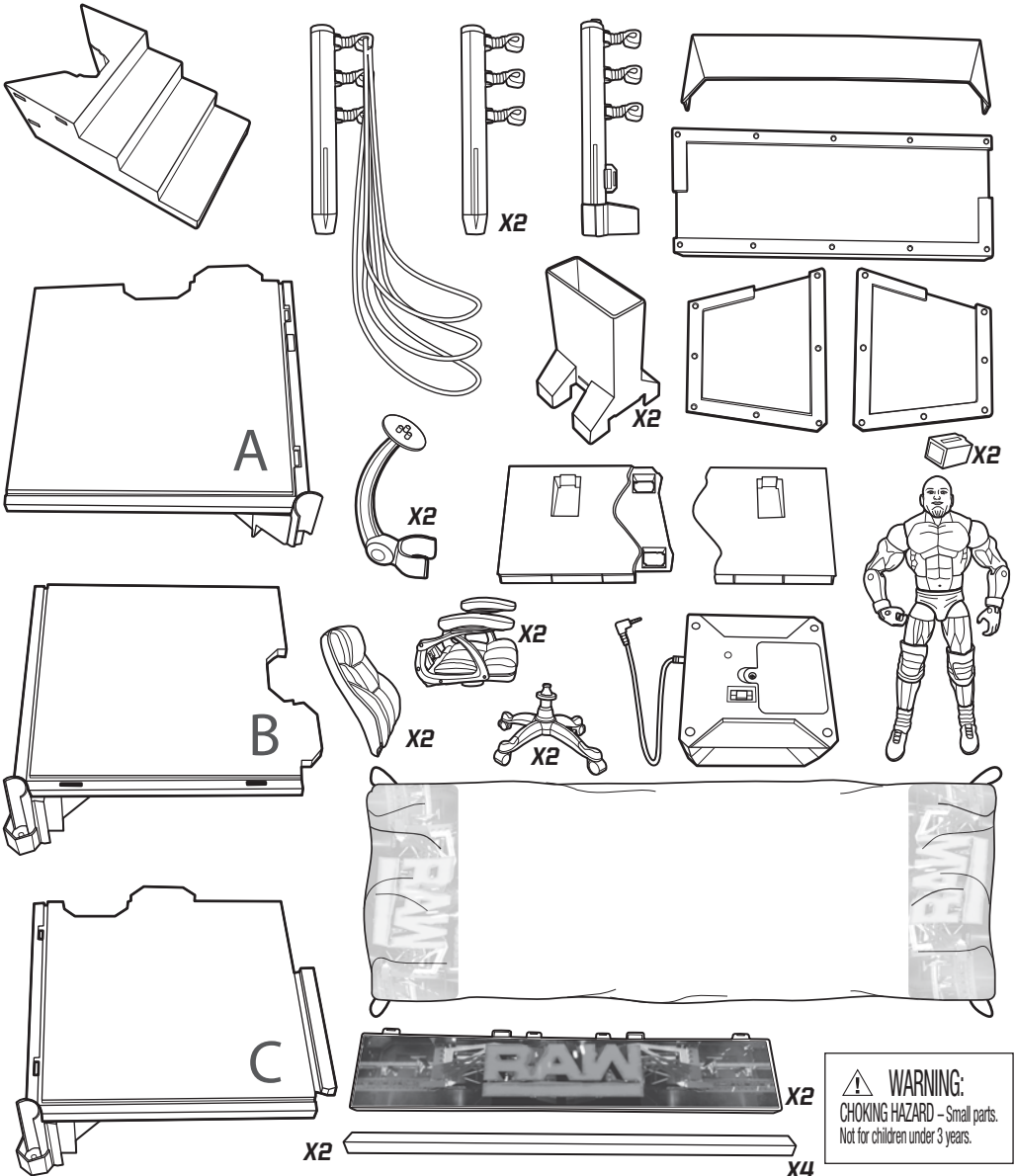
RAW[®] MAIN EVENT RING INSTRUCTIONS



8+

Please keep these instructions for future reference as they contain important information.

CONTENTS

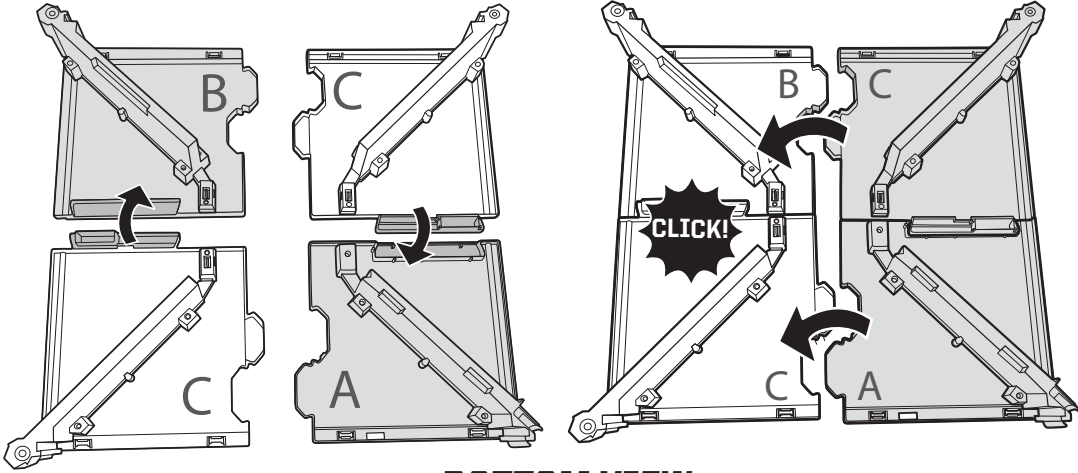


WARNING:
CHOKING HAZARD - Small parts.
Not for children under 3 years.

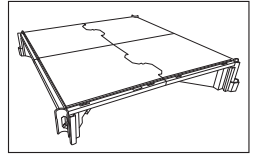
1. ASSEMBLY

1A. Refer to letters on parts to assemble the ring.

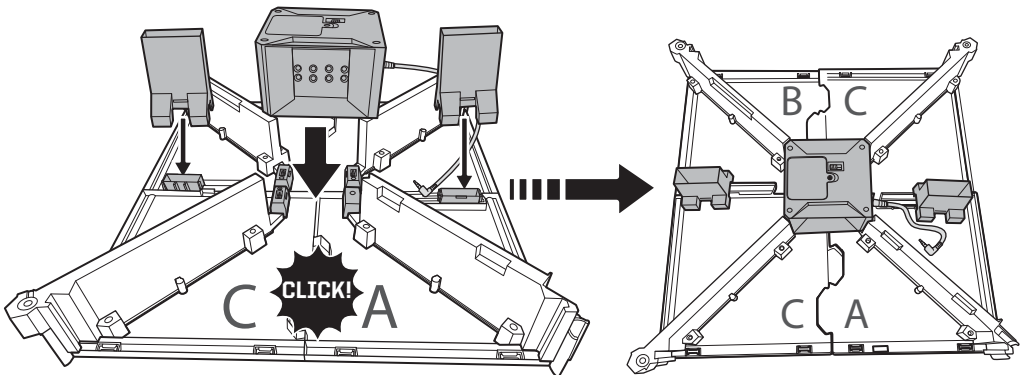
1B.



BOTTOM VIEW

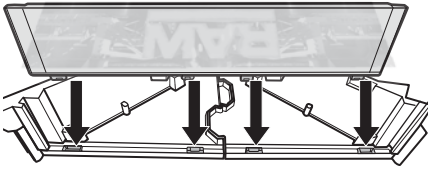
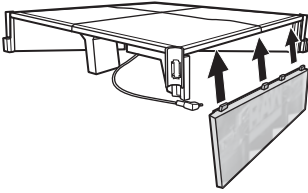


2.

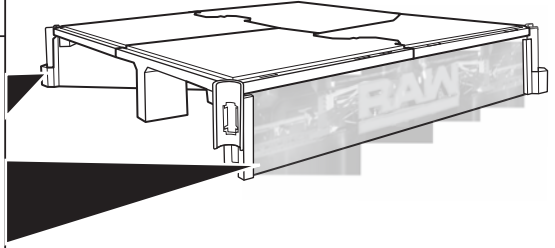


BOTTOM VIEW

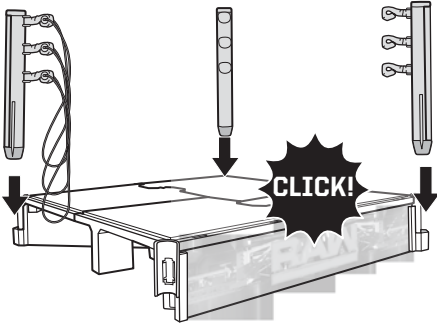
3.



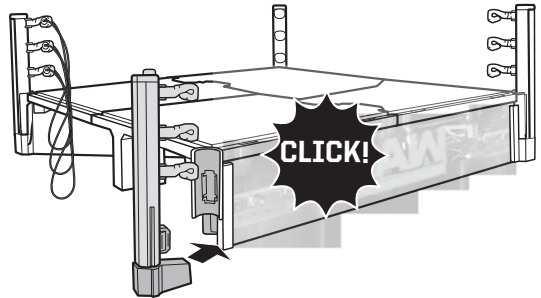
BOTTOM VIEW



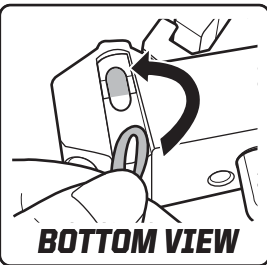
4A.



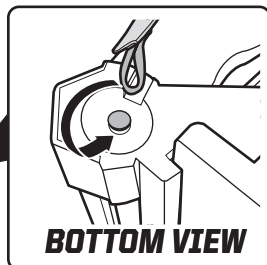
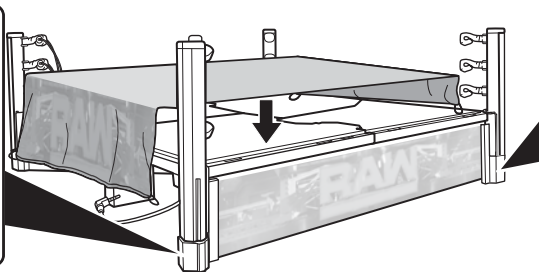
4B.



5. Place and spread apron on the ring. Tie the apron down on all four corners.

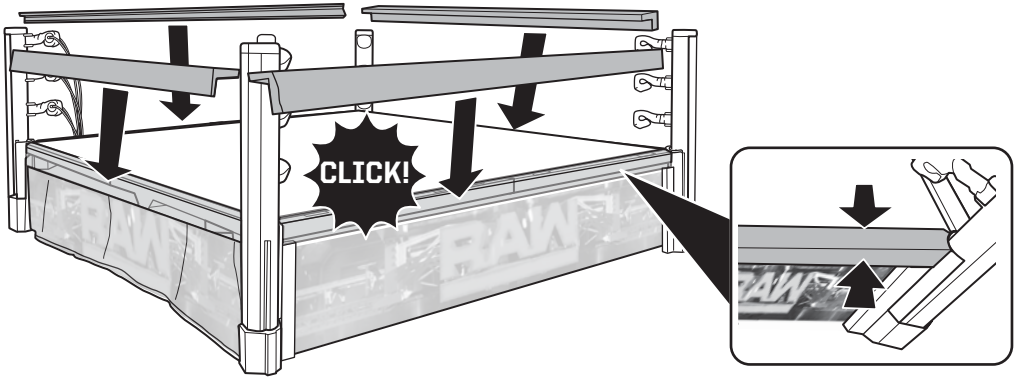


BOTTOM VIEW

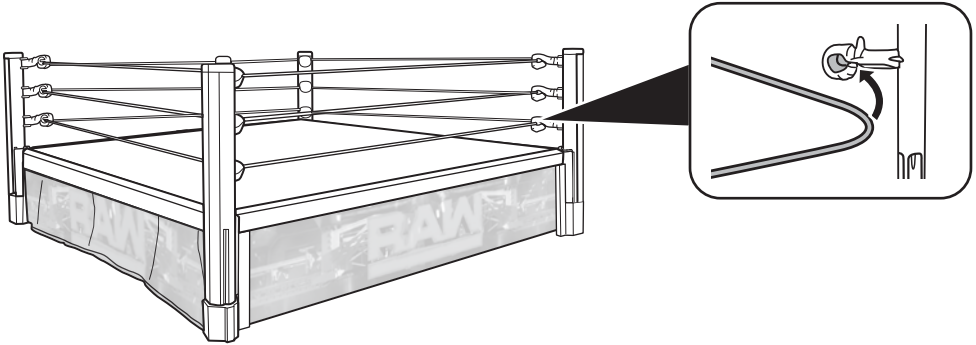


BOTTOM VIEW

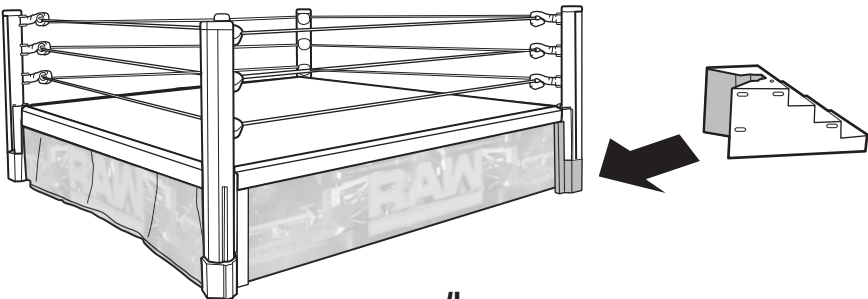
6.



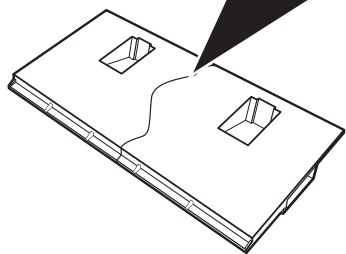
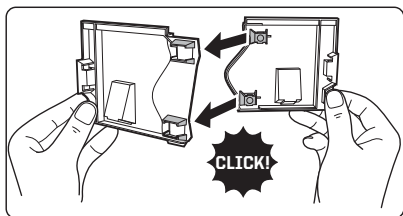
7. *Attach ropes, starting from the bottom rope up.*



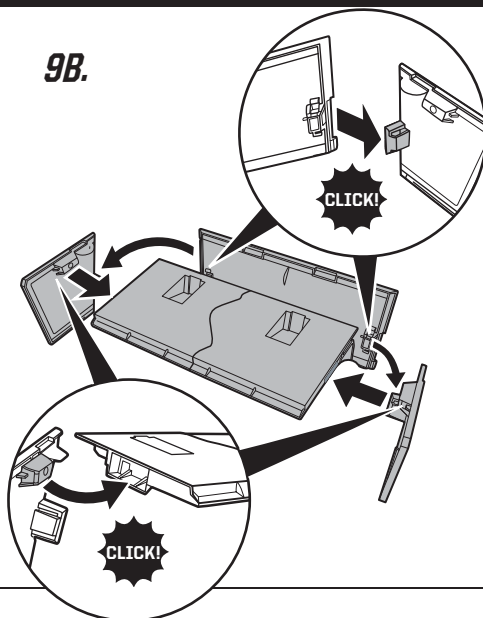
8. *Place the steps on any corner of the ring.*



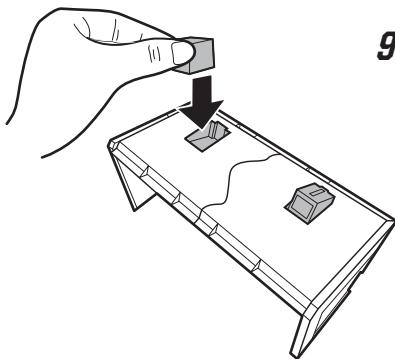
9A.



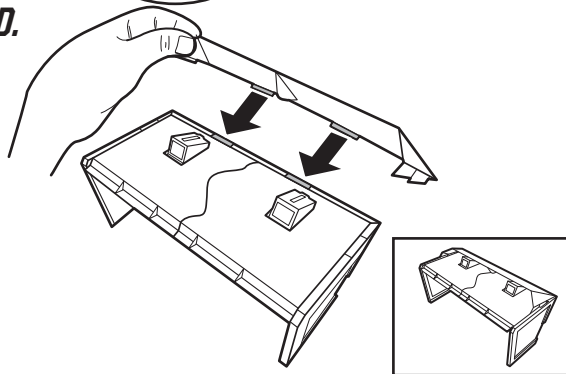
9B.



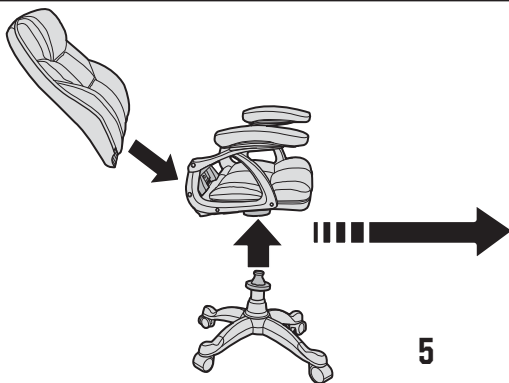
9C.



9D.



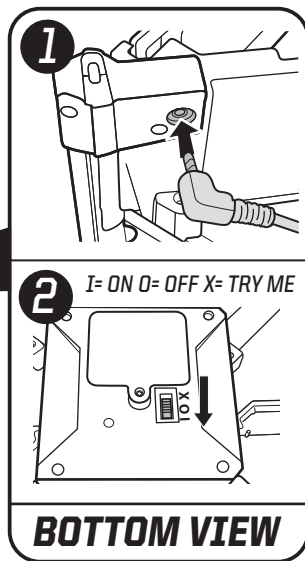
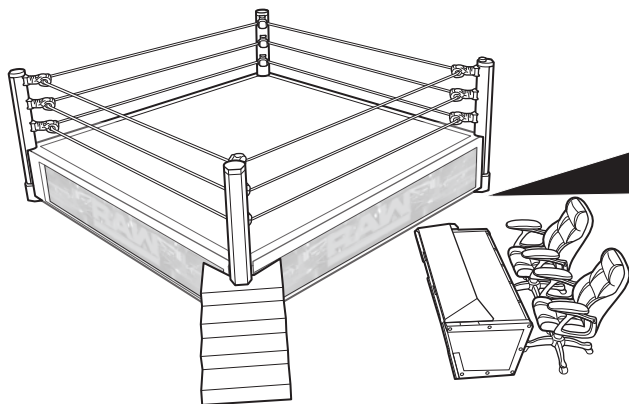
10.



X2

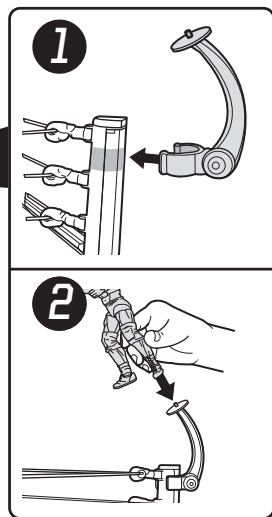
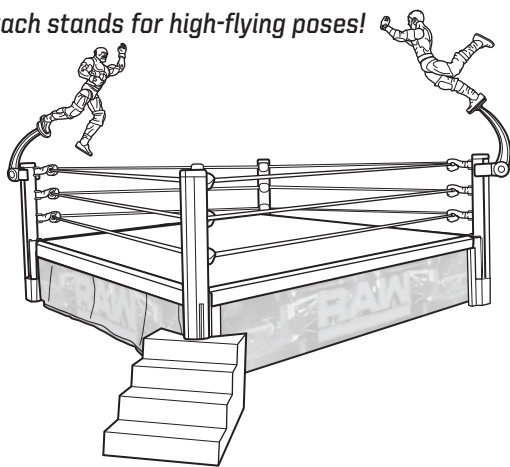
2. SET UP

Connect power cord to the ring and slide power switch to ON (I).



3. TO PLAY

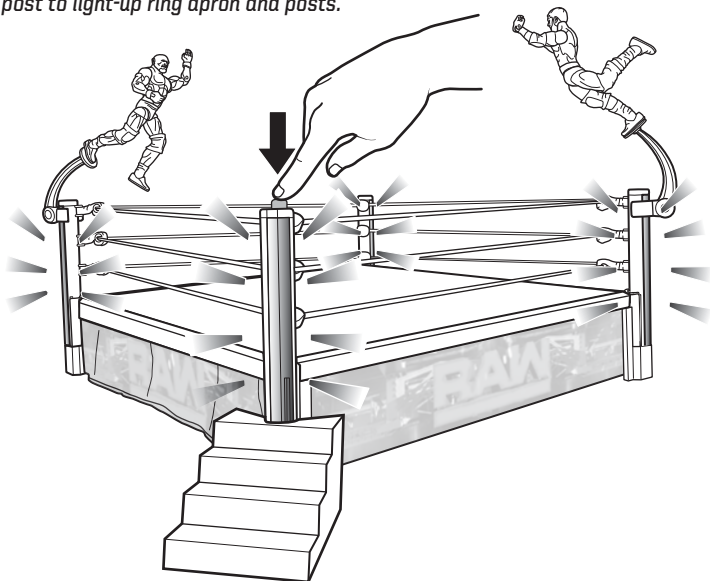
1. Attach stands for high-flying poses!



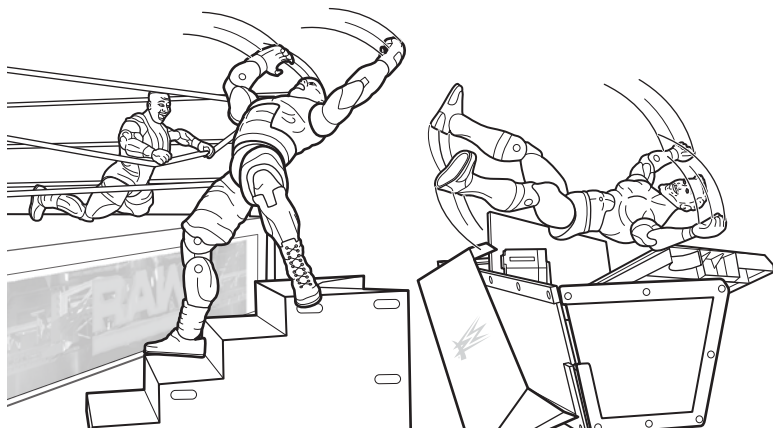
GOLDBERG™ FIGURE INCLUDED. ADDITIONAL FIGURES AND ACCESSORIES SOLD SEPARATELY. SUBJECT TO AVAILABILITY. FIGURES CANNOT PERFORM MOVES AS SHOWN.

3. TO PLAY (CONTD.)

2. Press ring post to light-up ring apron and posts.



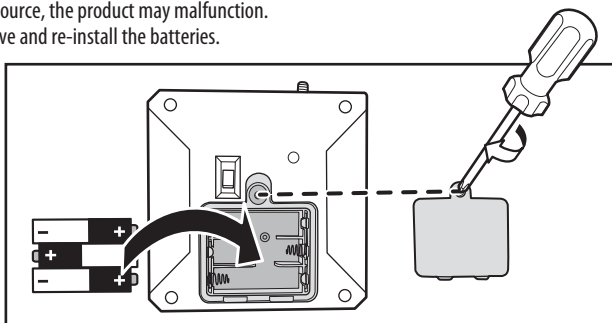
3. Destroy the breakaway table!



All WWE programming, talent names, images, likenesses, slogans, wrestling moves, trademarks, logos and copyrights are the exclusive property of WWE and its subsidiaries. All other trademarks, logos and copyrights are the property of their respective owners. © 2017 WWE. All Rights Reserved.

4. BATTERY INSTALLATION

- Batteries included are for demonstration purposes only.
- Replace the batteries if lights dim.
- Locate the battery box on the bottom of the ring.
- Unscrew the battery cover with a Phillips head screwdriver (not included).
- Remove batteries and dispose of them safely.
- Install 3 new AA (LR6) batteries in the orientation (+/-) shown.
- Replace battery cover and tighten screw.
- For longer life, use alkaline batteries.
- When exposed to an electrostatic source, the product may malfunction. To resume normal operation, remove and re-install the batteries.



BATTERY SAFETY INFORMATION

In exceptional circumstances batteries may leak fluids that can cause a chemical burn injury or ruin your product. To avoid battery leakage:

- Non-rechargeable batteries are not to be recharged.
- Rechargeable batteries are to be removed from the product before being charged.
- Rechargeable batteries are only to be charged under adult supervision.
- Do not mix alkaline, standard (carbon-zinc), or rechargeable batteries.
- Do not mix old and new batteries.
- Only batteries of the same or equivalent type as recommended are to be used.
- Batteries are to be inserted with the correct polarity.
- Exhausted batteries are to be removed from the product.
- The supply terminals are not to be short-circuited.
- Dispose of battery(ies) safely.
- Do not dispose of this product in a fire. The batteries inside may explode or leak.



Protect the environment by not disposing of this product or any batteries with household waste. This symbol indicates that this product shall not be treated as household waste. Check your local authority for recycling advice and facilities.

©2017 Mattel. All Rights Reserved. ® and ™ designate U.S. trademarks of Mattel, except as noted. Mattel, Inc., 636 Girard Avenue, East Aurora, NY 14052, U.S.A. Consumer Services 1-800-524-8697. Mattel U.K. Ltd., Vanwall Business Park, Maidenhead SL6 4UB. Helpline 01628 500303. Mattel Australia Pty., Ltd., Richmond, Victoria. 3121. Consumer Advisory Service - 1300 135 312. Mattel East Asia Ltd., Room 503-09, North Tower, World Finance Centre, Harbour City, Tsimshatsui, HK, China. Tel.: (852) 3185-6500. Diimport & Diedarkan Oleh: Mattel Southeast Asia Pte. Ltd., No 19-1, Tower 3 Avenue 7, Bangsar South City, No 8, Jalan Kerinchi, 59200 Kuala Lumpur, Malaysia. Tel: 03-78803817, Fax: 03-78803867.

**DXG60-0970
1100225059-D0M**

