

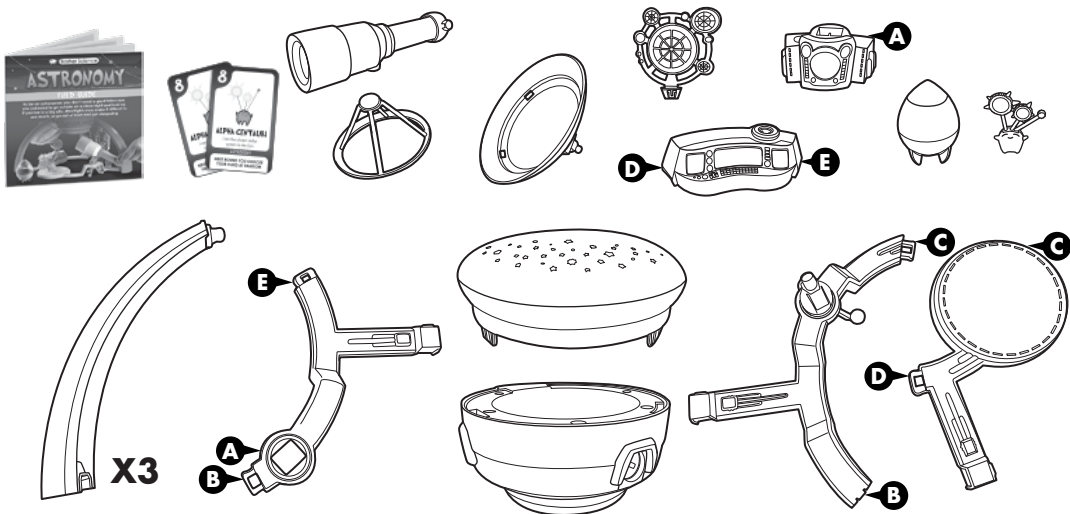
# COSMIC SPACE STATION

## INSTRUCTIONS

6+

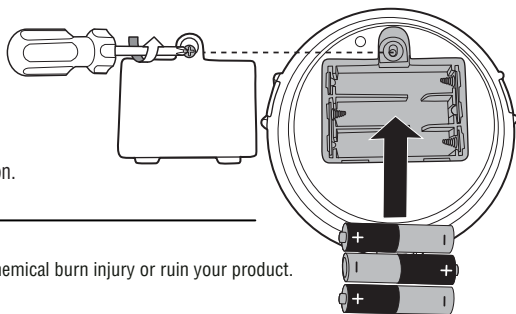
Please keep these instructions for future reference as they contain important information.

### CONTENTS



### 1. BATTERY INSTALLATION

- Requires 3 AAA(LR03) batteries (not included).
- Unscrew the battery cover with a Phillips head screwdriver (not included).
- Install 3 new AAA(LR03) batteries in the orientation (+/-) shown.
- Replace battery cover and tighten screw.
- Replace the batteries if lights dim.
- For longer life, use alkaline batteries.
- When exposed to an electrostatic source, the product may malfunction. To resume normal operation, remove and re-install the batteries.



#### BATTERY SAFETY INFORMATION

In exceptional circumstances batteries may leak fluids that can cause a chemical burn injury or ruin your product. To avoid battery leakage:

- Non-rechargeable batteries are not to be recharged.
- Rechargeable batteries are to be removed from the product before being charged (if designed to be removable).
- Rechargeable batteries are only to be charged under adult supervision (if designed to be removable).
- Do not mix alkaline, standard (carbon-zinc), or rechargeable batteries.
- Do not mix old and new batteries.
- Only batteries of the same or equivalent type as recommended are to be used.
- Batteries are to be inserted with the correct polarity.
- Exhausted batteries are to be removed from the product.
- The supply terminals are not to be short-circuited.
- Dispose of battery(ies) safely.
- Do not dispose of this product in a fire. The batteries inside may explode or leak.

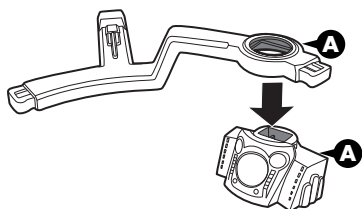


Protect the environment by not disposing of this product with household waste (2012/19/EU). Check your local authority for recycling advice and facilities.

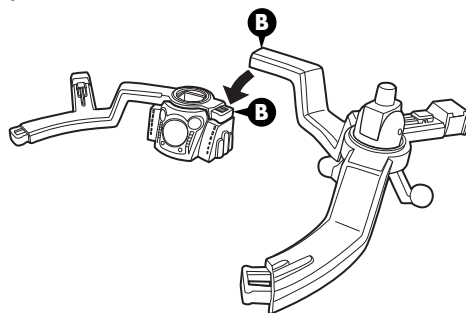
## 2. ASSEMBLY

REFER TO LETTERS ON TOY PARTS TO HELP WITH ASSEMBLY.

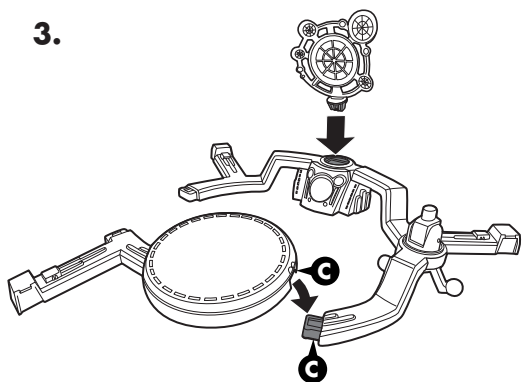
1.



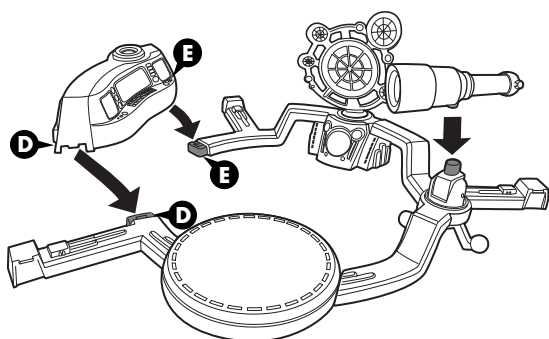
2.



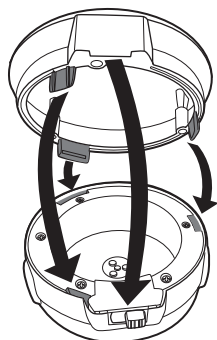
3.



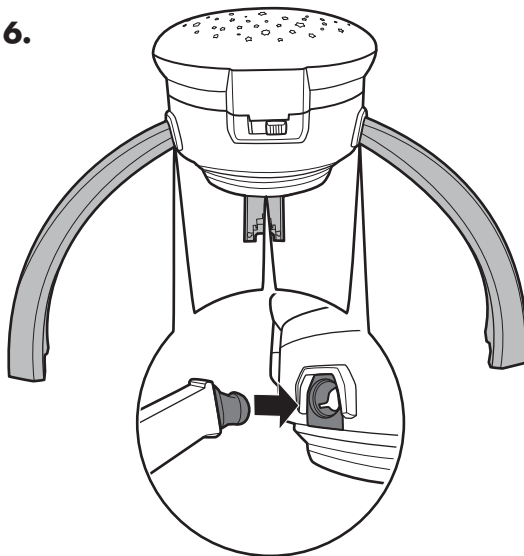
4.



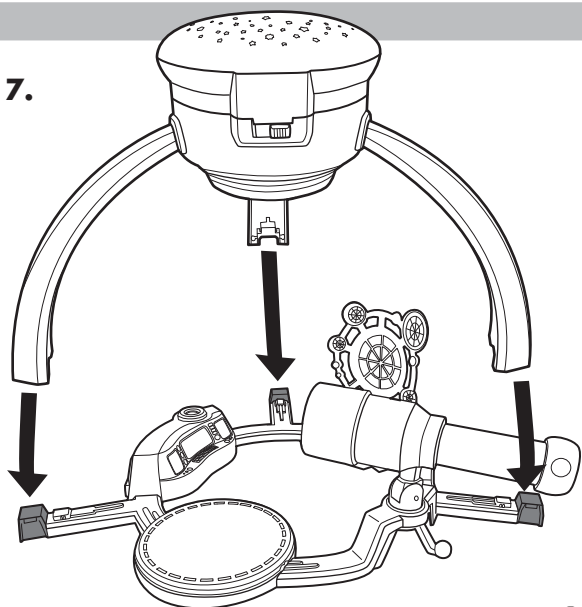
5.



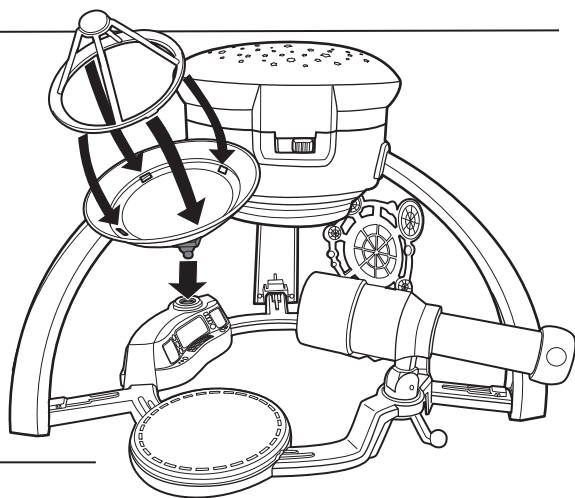
6.



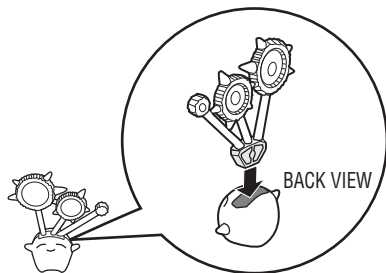
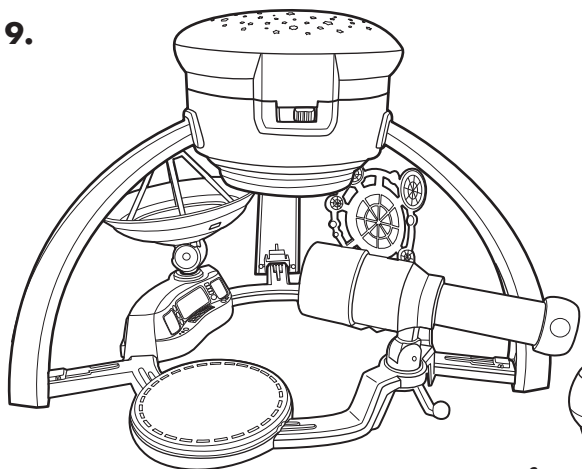
7.



8.

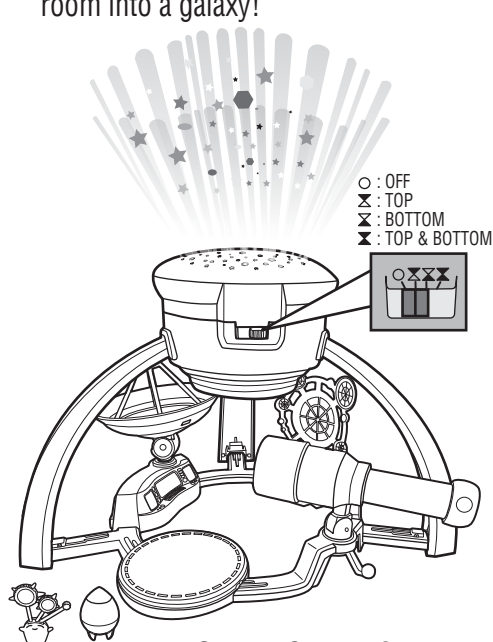


9.



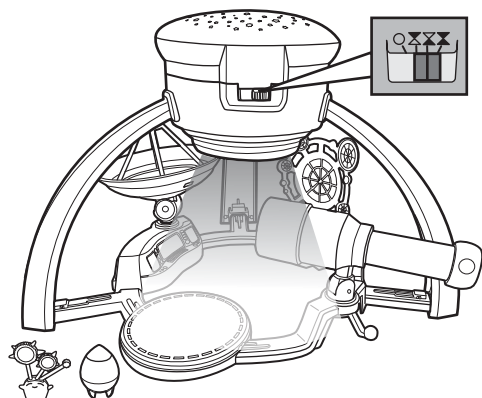
### 3. TO PLAY

1. Flip switch to  to turn on the Starlight Projector. Turn your room into a galaxy!

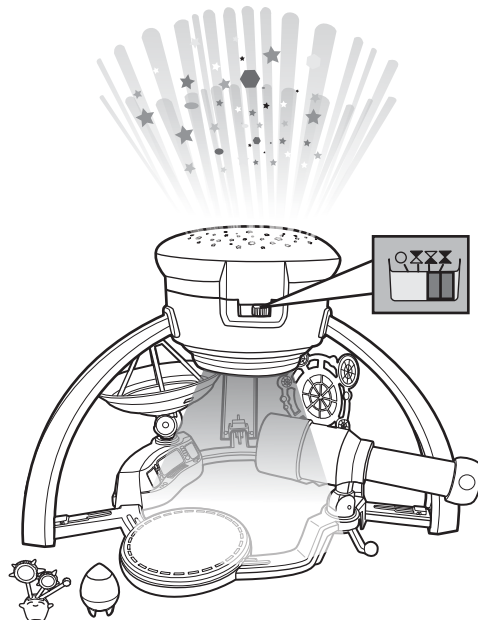


**PERFORMANCE TIP:** Starlight Projector works best in a dark environment.

2. Flip switch to  light up the ground!

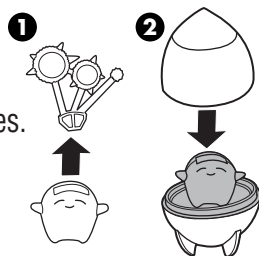


3. Flip switch to  to turn on both sides of the projector!

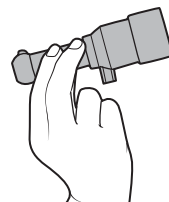


4. Ride the rocket!

Not for use with some Basher Science™ figures.



5. Explore with the working telescope!



BASHER SCIENCE and all related characters and elements TM and © 2007-2010 Simon Basher and Toucan Books. All rights reserved. Licensed from Macmillan Publishers International Ltd.

©2016 Mattel. All Rights Reserved. ® and ™ designate U.S. trademarks of Mattel, except as noted.

Mattel, Inc. 636 Girard Avenue, East Aurora, NY 14052, U.S.A. Consumer Relations 1-800-524-8697. Mattel Canada Inc., Mississauga, Ontario L5R 3W2. You may call us free at 1-800-524-8697. Mattel U.K. Ltd., Vanwall Business Park, Maidenhead SL6 4UB. Helpline 01628 500303. Mattel Australia Pty., Ltd., Richmond, Victoria. 3121. Consumer Advisory Service - 1300 135 312 Mattel East Asia Ltd., Room 1106, South Tower, World Finance Centre, Harbour City, Tsimshatsui, HK, China. Diimport & Diedarkan Oleh: Mattel SEA Ptd Ltd.(993532-P) Lot 13.5, 13th Floor, Menara Lien Hoe, Persiaran Tropicana Golf Country Resort, 47410 PJ. Tel:03-78803817, Fax:03-78803867.

service.mattel.com

