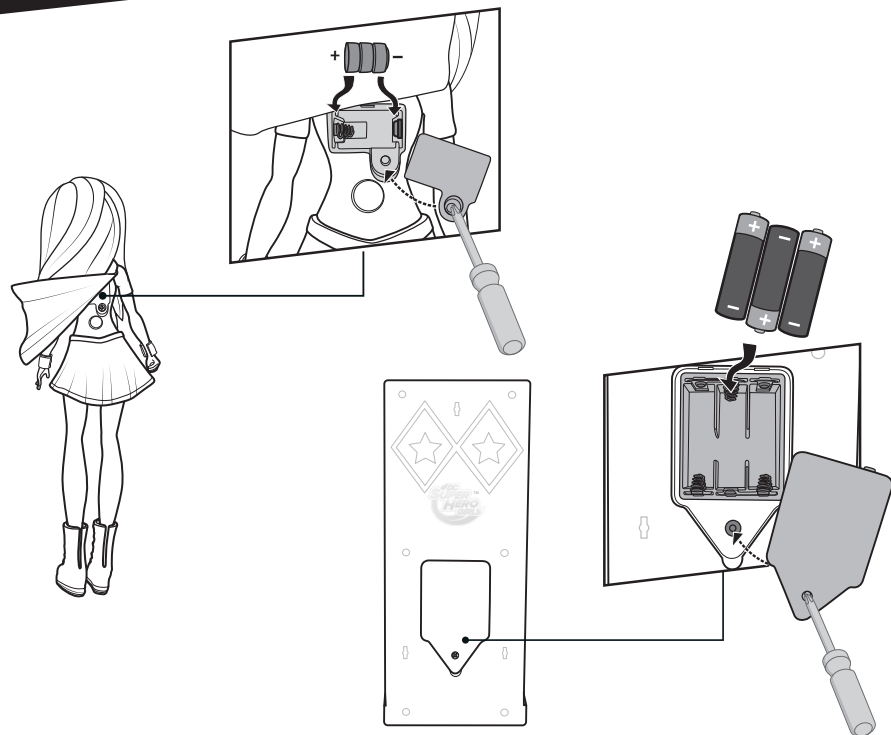


BACK VIEW



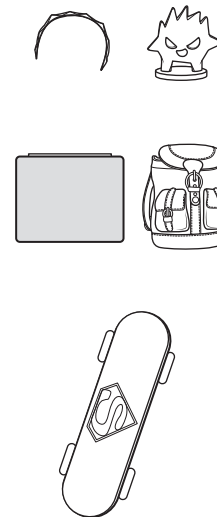
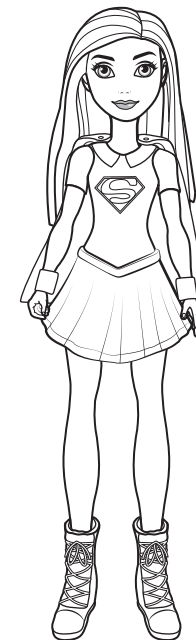
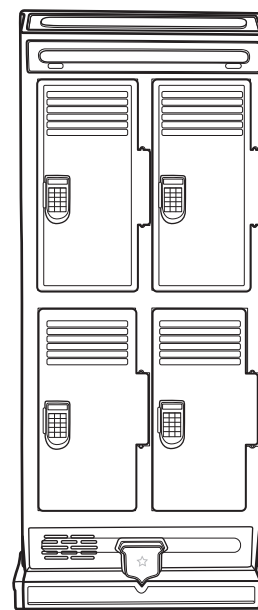
The Locker is equipped with an automatic shut-off feature that helps preserve battery life.

Battery Installation

Unscrew the battery covers with a Phillips head screwdriver (not included). Install 3pcs AG13/LR44 batteries for doll and 3pcs AA/LR6 batteries(not included) for locker in the orientation (+/-) as shown. Replace battery covers and tighten screws. When exposed to an electrostatic source, the product may malfunction. To resume normal operation, remove and re-install the batteries. Replace batteries for doll when doll does not respond. Replace batteries for locker when light goes dim or sounds become garbled or faint. For longer life, use only alkaline batteries.



INSTRUCTIONS CONTENTS



Doll includes 3pcs AG13/LR44 batteries for demonstration purposes only.
Locker requires 3pcs AA/LR6 batteries, not included.
Dispose of batteries safely.



Please remove everything from the package and compare to the contents shown here. If any items are missing, please contact your local Mattel office. Keep these instructions for future reference as they contain important information.

CONSUMER INFORMATION

Need Assistance? Visit service.mattel.com or call 1-800-524-8697 (US and Canada only).

SERVICE.MATTEL.COM

©2016 Mattel. All Rights Reserved. Mattel, Inc., 636 Girard Avenue, East Aurora, NY 14052, U.S.A. Consumer Services 1-800-524-8697. Mattel U.K. Ltd., Vanwall Business Park, Maidenhead SL6 4UB. Helpline 01628 500303. Mattel Australia Pty., Ltd., Richmond, Victoria. 3121. Consumer Advisory Service - 1300 135 312. Mattel East Asia Ltd.,

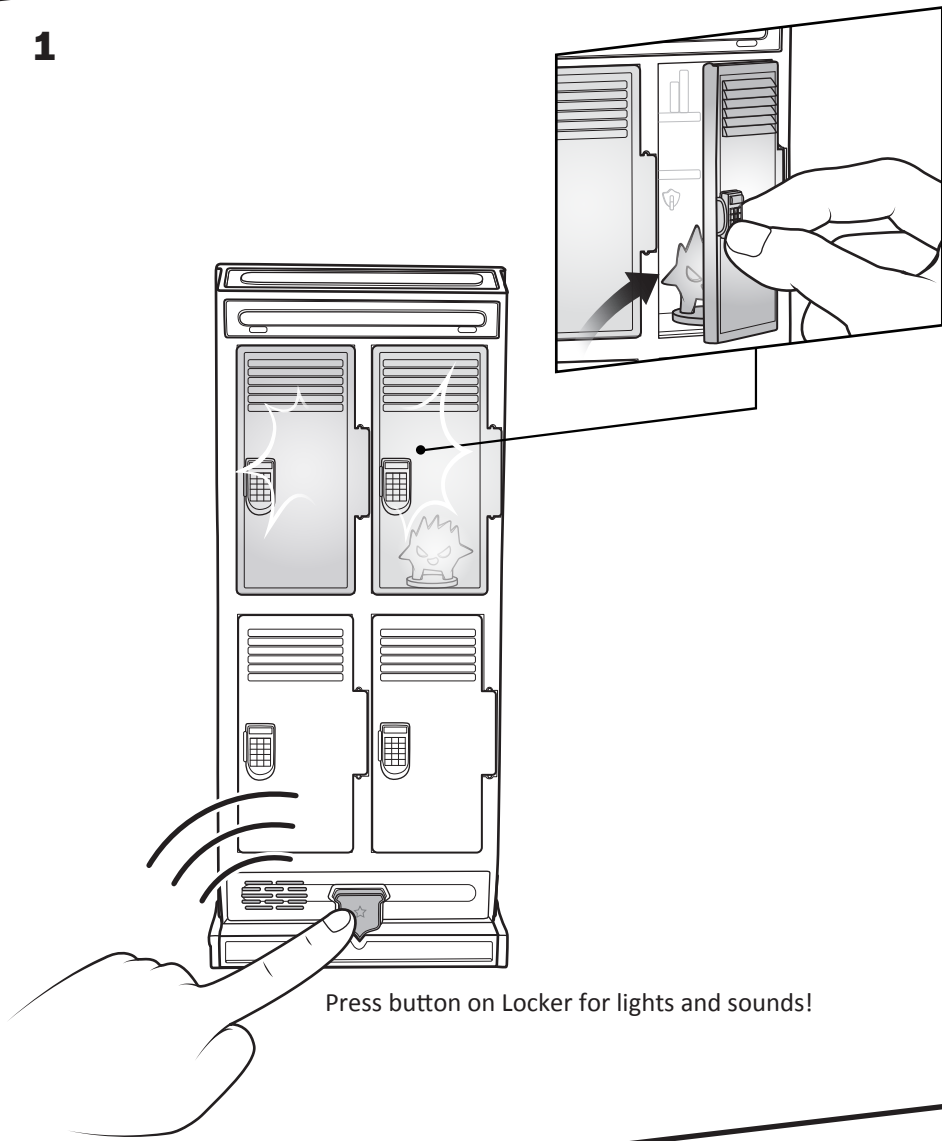
Room 503-09, North Tower, World Finance Centre, Harbour City, Tsimshatsui, HK, China. Tel.: (852) 3185-6500. Diimport & Diedarkan Oleh: Mattel Southeast Asia Pte. Ltd., No 19-1, Tower 3 Avenue 7, Bangsar South City, No 8, Jalan Kerinchi, 59200 Kuala Lumpur, Malaysia. Tel: 03-78803817, Fax: 03-78803867.



DC SUPER HERO GIRLS and all related characters and elements © & ™ DC Comics and Warner Bros. Entertainment Inc. WB SHIELD: ™ & © WBEI. (s17)

LET'S PLAY

1



Press button on Locker for lights and sounds!

2

Doll's chest should be aligned with featured locker as shown.



★Press and hold button on doll's back to activate x-ray vision.

Note: For best results, keep doll 9 inches away from locker while activating x-ray vision.