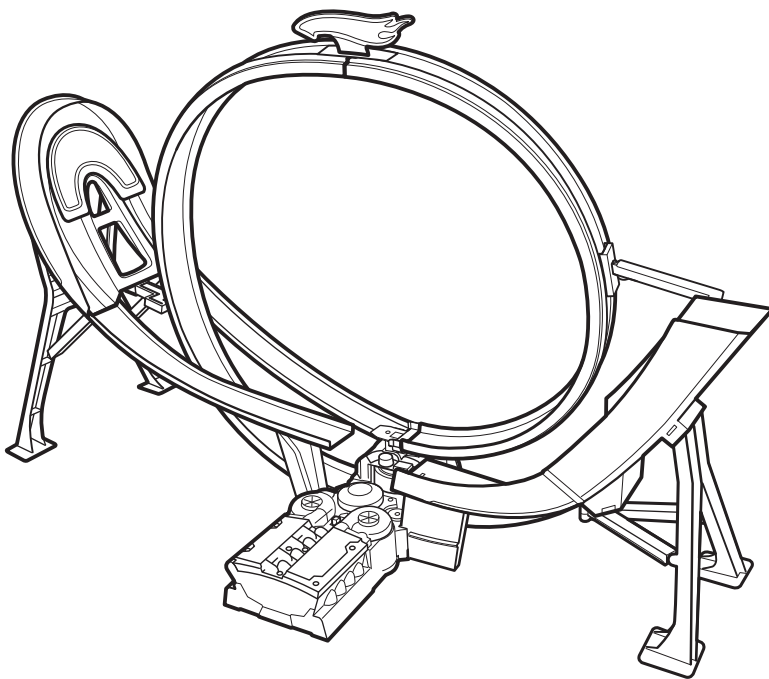




POWER LOOP® RACE WAY



5+

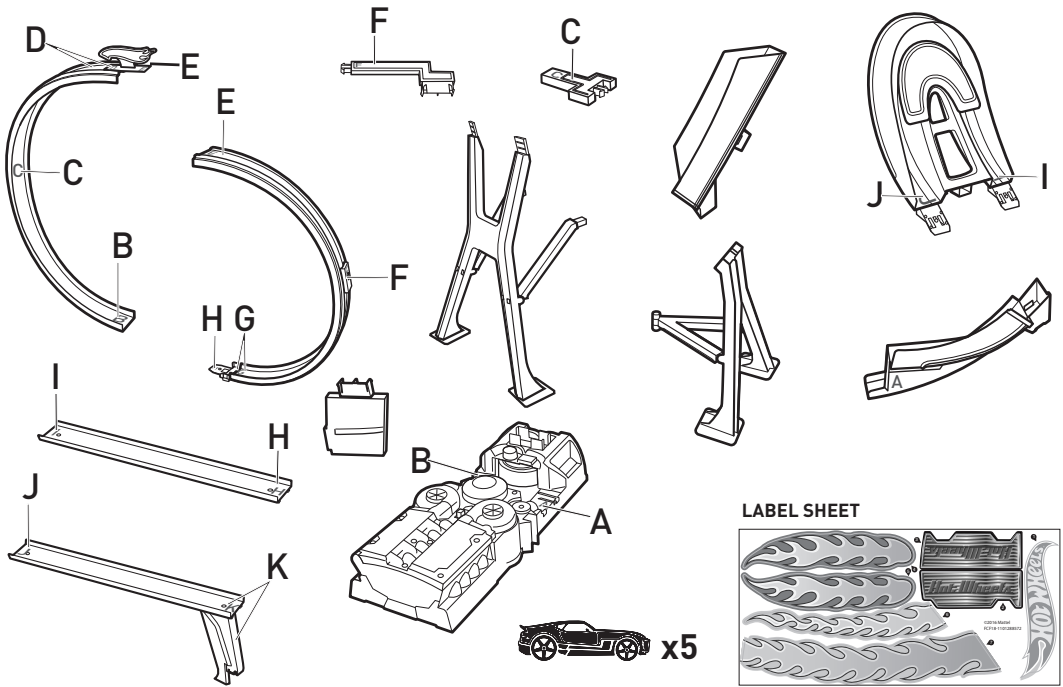
service.mattel.com
HOTWHEELS.COM



FCF18-0970
1101288854-DOM

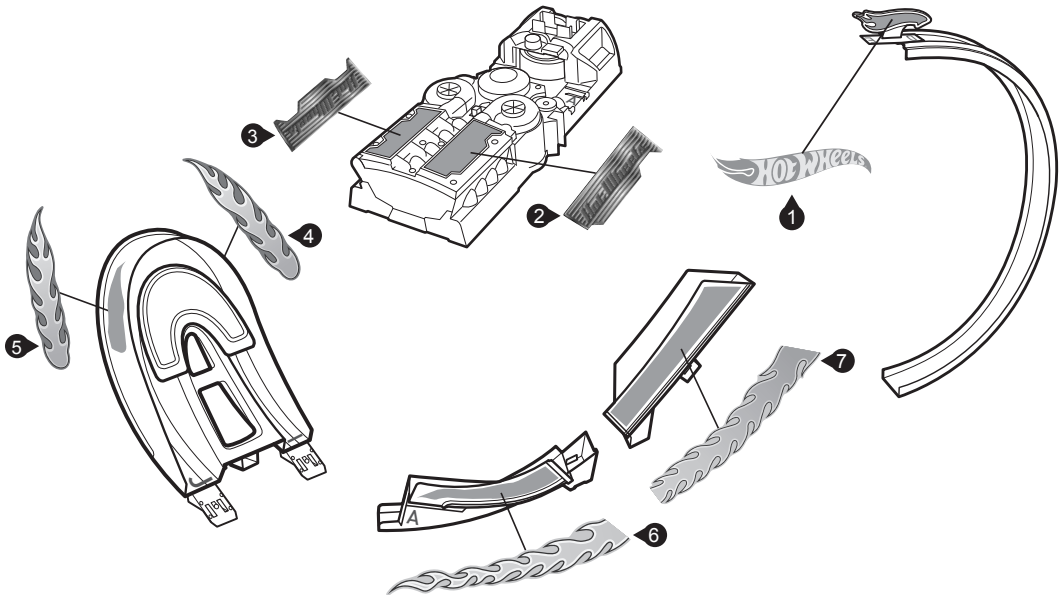
PLEASE KEEP THESE INSTRUCTIONS FOR FUTURE
REFERENCE AS THEY CONTAIN IMPORTANT INFORMATION.

CONTENTS



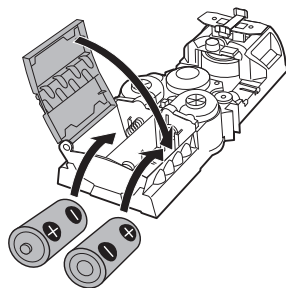
Requires 2 "D" alkaline batteries (not included).

APPLY LABELS

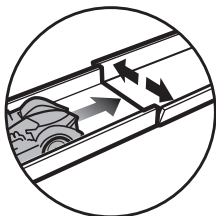


BATTERY INSTALLATION

Install 2 new “D” alkaline batteries in the orientation (+/-) shown. Close battery cover. Replace batteries when booster can no longer propel car through the track set. For best performance, use only alkaline batteries.



OPERATING TIPS



Adjust track side walls at each connection point as shown.

BATTERY SAFETY INFORMATION

In exceptional circumstances batteries may leak fluids that can cause a chemical burn injury or ruin your product. To avoid battery leakage:

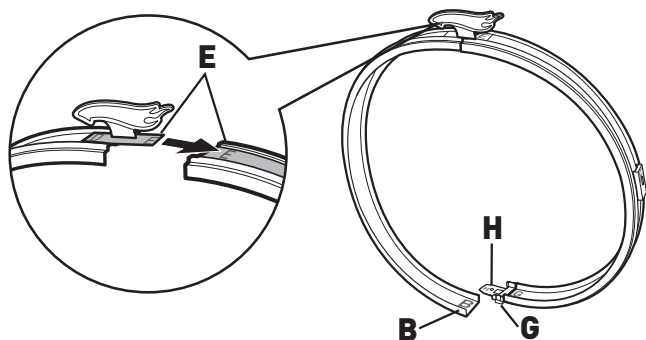
- Non-rechargeable batteries are not to be recharged.
- Rechargeable batteries are to be removed from the product before being charged.
- Rechargeable batteries are only to be charged under adult supervision.
- Do not mix alkaline, standard (carbon-zinc), or rechargeable (nickel-cadmium) batteries.
- Do not mix old and new batteries.
- Only batteries of the same or equivalent type as recommended are to be used.
- Batteries are to be inserted with the correct polarity.
- Exhausted batteries are to be removed from the product.
- The supply terminals are not to be short-circuited.
- Dispose of battery(ies) safely.
- Do not dispose of this product in a fire. The batteries inside may explode or leak.



Protect the environment by not disposing of this product with household waste [2012/19/EU]. Check your local authority for recycling advice and facilities.

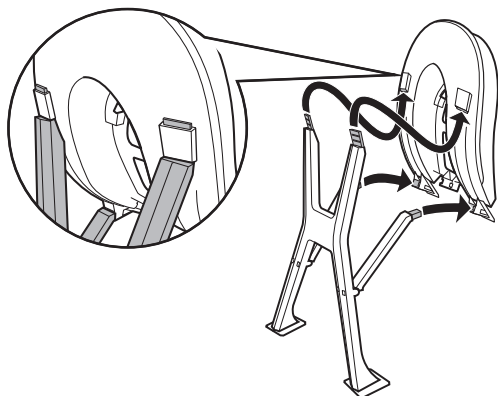
ASSEMBLY

1. Refer to letters on parts and contents page to help with assembly.

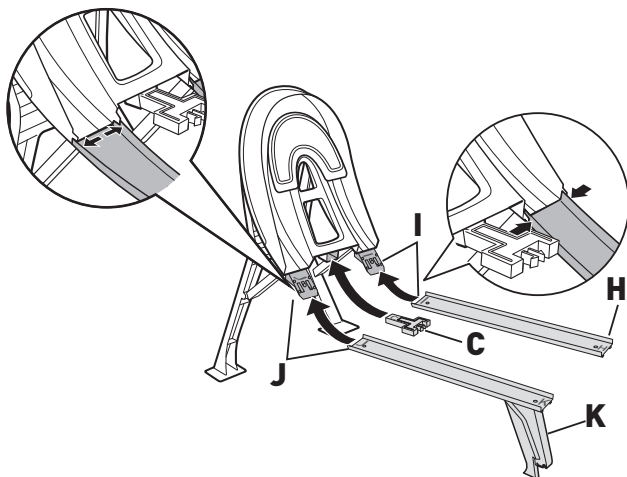
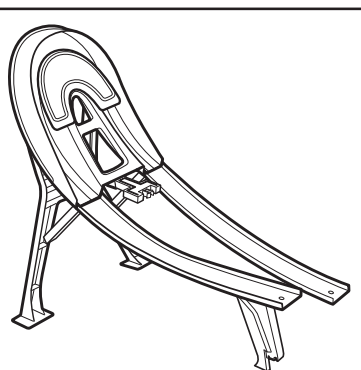


2.

a



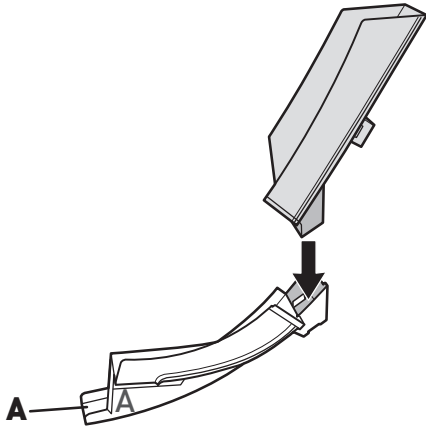
b



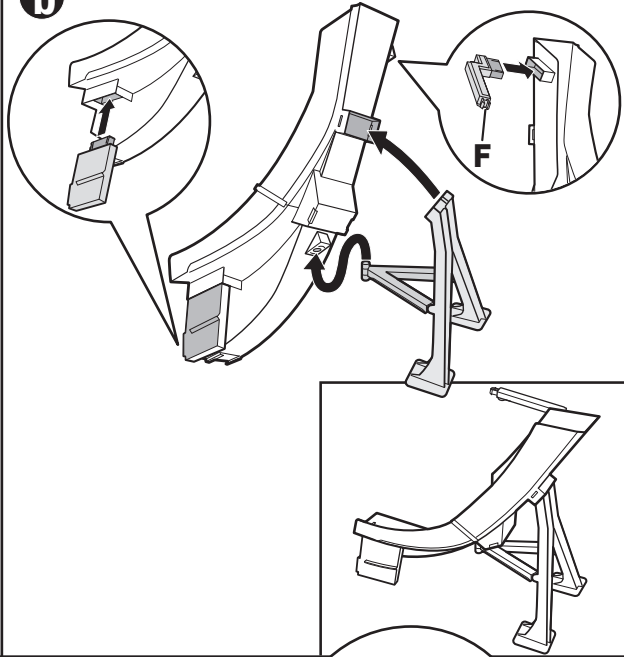
ASSEMBLY (CONTD.)

3.

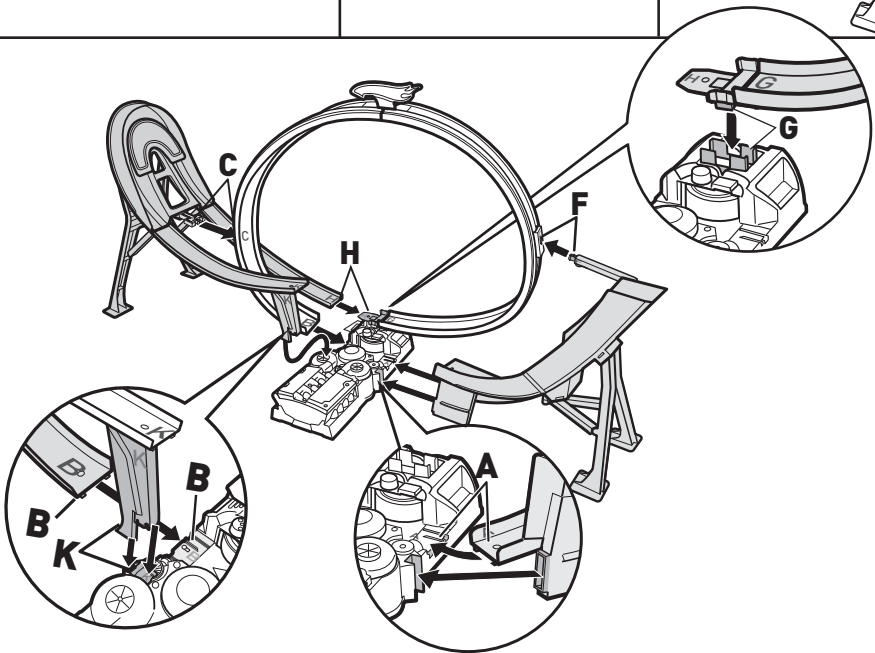
a



b



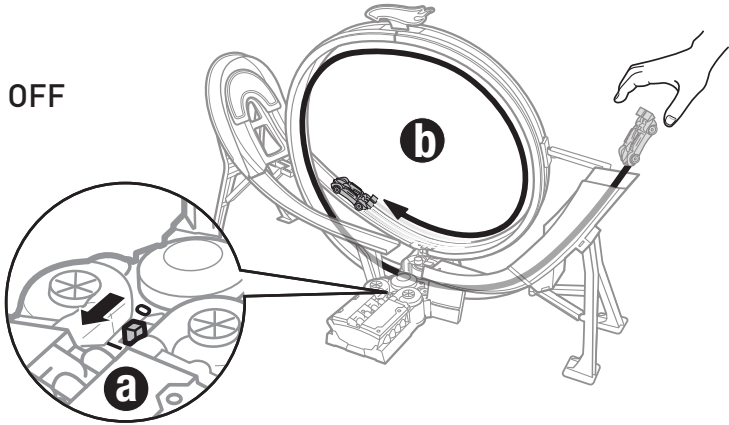
4.



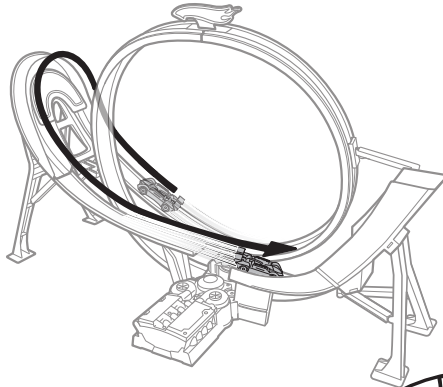
TO PLAY

1.

I = ON O = OFF



2.



3.

