

# Gas Out™

REV it up,  
but don't CRASH!

Game

## START HERE!

How to Set Up the Game:

1



Contains:

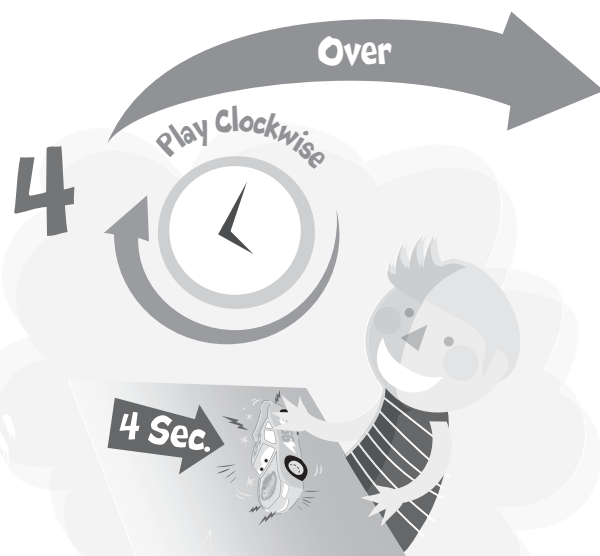
- Lightning McQueen unit
- Rules
- 56 Gas Out™ Cards

2

Put Lightning McQueen in the middle of the table where everyone can see and hear him! To get the full sound benefit of his roaring engine, a table is best.



Shuffle the cards and deal 3 to each player. Always draw back up to 3 at the end of your turn.



To decide who goes first, each player presses down on Lightning McQueen and holds for 4 seconds. You will hear Lightning McQueen TRYING to start. If he STARTS, that player goes first. If he DOES NOT START, pass him to the next player. Continue with each player until you hear the sound of Lightning STARTING and that player goes first. Then, continue clockwise from that player.



Place the rest of the cards face down for a draw pile. You'll form a discard pile as you play right next to the draw pile.

## How to Play:

1

On your turn, place any card from your hand down on the discard pile. What you do next is determined by which card you've played:

2



If you play a NUMBER CARD, press Lightning McQueen as many times as the number shown. If you hear the sound of him REVING his engine, you are okay. But if you hear the sound of him CRASHING, you're out!

This is important:  
**IF LIGHTNING MCQUEEN CRASHES, YOU'RE OUT!**

Once Lightning McQueen has crashed, keep playing with the remaining players. Again, place cards down and push Lightning McQueen, skip a player or reverse directions!

4



3



If you play a SKIP card, the next player is skipped.



If you play a REVERSE card, play changes to move in the opposite direction. Note: in a 2-player game, if you play a Reverse card, it means you go again right away!



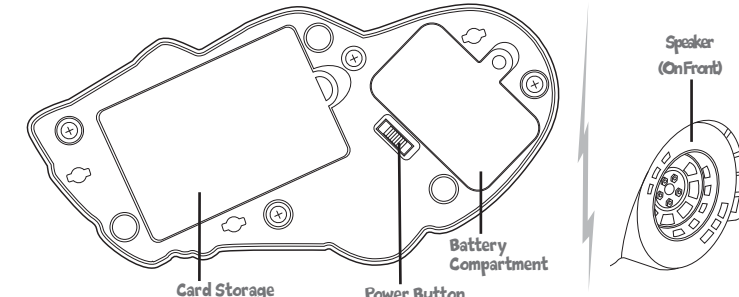
If you play a SHIFT card, each player must pass all the cards in their hand to the player on their left.



If you play a LAP card, beginning with the player that played the card, each player must press Lightning McQueen one time. If he REVS, you're safe. Keep going until you hear the sound of a CRASH. Whoever presses the button and causes the crash is out of the game.

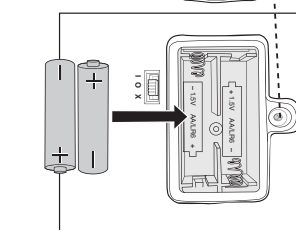
Remember, if YOU make Lightning McQueen crash, you're out!

You'll hear the engine REV as you push, but there's no doubt when he's CRASHED!



### BATTERY INSTALLATION

1. Open battery cover with Phillips head screwdriver (not included).
2. Install 2 new 'AA' alkaline (LR6) batteries in the orientation (+/-) shown.
3. Replace battery cover and tighten the screw.



For best performance, use only alkaline batteries. Replace batteries when sounds become distorted.

batteries included are for demonstration purposes only.

If product malfunctions, turn power OFF for a few seconds, then ON again.

Keep these instructions for future reference as they contain important information.

Last player in wins!

service.mattel.com

©Disney/Pixar

Visit the Cars website at Disney.com/Cars

©2017 Mattel. All Rights Reserved. Tous droits réservés. Mattel, Inc. 636 Girard Avenue, East Aurora, NY 14052, U.S.A. Mattel Canada Inc. Mississauga, Ontario L5R 3W2. You may call us free at / Composez sans frais le 1-800-524-8697. Mattel France, Parc de la Cerisaie, 1/3/5 allée des Fleurs, 94263 Fresnes Cedex. Mattel South Africa (PTY) LTD, Office 102/3, 30 Melrose Boulevard, Johannesburg 2196. Mattel East Asia Ltd., Room 503-09, North Tower, World Finance Centre, Harbour City, Tsimshatsui, HK, China. Tel.: (852) 3185-6500. Dimport & Diedarkan Oleh: Mattel Southeast Asia Pte. Ltd., No 19-1, Tower 3 Avenue 7, Bangsar South City, No 8, Jalan Kerinchi, 59200 Kuala Lumpur, Malaysia. Tel: 03-33419052. Mattel Australia Pty. Ltd., Richmond, Victoria. 3121. Consumer Advisory Service - 1300 135 312. N° Cristal 0969 36 99 99 (Numero non surtaxé) ou www.lesjouetsmattel.fr Mattel Belgium, Trade Mart, Atomiumsquare, Bogota 202 - B 275, 1020 Brussels. Tel.: 0800 - 16 936. Luxembourg: 800 - 22 784. Mattel Europa B.V., Godel 1, 1186 MJ Amstelveen, Nederland.

FFK03-2B70-G1  
1101316990-2LB

