



# MARIOKART™ RACES INTO THE REAL WORLD!

Now you can make your favorite MARIOKART™ characters come to life and pilot their racing karts around your Hot Wheels® Ai SMART TRACK™. Each kit includes a kart body, wheels, and a controller plug-in with authentic MARIOKART™-style speech and sounds!

Check out videos and lots more at: [hotwheels.com/ai](http://hotwheels.com/ai)

# BOWSER™ SMART CAR BODY & CARTRIDGE KIT RACING GUIDE



TM & © 2017 Nintendo.

**CAUTION:** To prevent entanglement, keep all hair away from the wheels.

COLORS AND DECORATIONS MAY VARY.

KEEP THESE INSTRUCTIONS FOR FUTURE REFERENCE AS THEY CONTAIN IMPORTANT INFORMATION.

©2017 Mattel. All Rights Reserved. © and ™ designate U.S. trademarks of Mattel, except as noted, Mattel, Inc., 636 Girard Avenue, East Aurora, NY 14052, U.S.A. Consumer Services 1-800-524-8697. Mattel U.K. Ltd., Vanwall Business Park, Maidenhead SL6 4UB. Helpline 01628 500303. Mattel Australia Pty., Ltd., Richmond, Victoria, 3121. Consumer Advisory Service - 1300 135 312. Mattel South Africa (PTY) LTD, Office 102 I3, 30 Melrose Boulevard, Johannesburg 2196. Mattel East Asia Ltd., Room 503-09, North Tower, World Finance Centre, Harbour City, Tsimshatsui, HK, China. Tel.: (852) 3185-6500. Diimport & Diedarkan Oleh: Mattel Southeast Asia Pte. Ltd., No 19-1, Tower 3 Avenue 7, Bangsar South City, No 8, Jalan Kerinchi, 59200 Kuala Lumpur, Malaysia. Tel: 03-33419052.

service.mattel.com  
**HOTWHEELS.COM**



ASST.FFL31  
FMV69-0970-G1



# MARIOKART™

8+



# TABLE OF CONTENTS

- 3 WHAT YOU GET INSIDE
- 4 VEHICLE CUSTOMIZATION
- 5 PREP CONTROLLER & CARTRIDGE
- 7 TROUBLESHOOTING
- 7 BATTERY SAFETY

CHECK OUT VIDEOS AND LOTS MORE AT:  
[HOTWHEELS.COM/Ai](https://www.hotwheels.com/Ai)



## SYSTEM TROUBLESHOOTING

If your **HOT WHEELS® Ai Race System** isn't working like it should, try these troubleshooting tips.

PROBLEM	CAUSE	SOLUTION
The controller operates with no sound.	The cartridge was removed while the controller was still on.	<ol style="list-style-type: none"> <li>1. Turn the controller off.</li> <li>2. Plug the cartridge cable back into the controller.</li> <li>3. Turn the controller back on.</li> </ol> <p><b>Important:</b> Remember to always turn the controller <b>off</b> before disconnecting the cartridge.</p> <p>* For a full controller reset, remove the batteries from the controller and press the power button for 5 seconds, then reinsert the batteries.</p>

## BATTERY SAFETY

**In exceptional circumstances batteries may leak fluids that can cause a chemical burn injury or ruin your product. To avoid battery leakage:**

- Non-rechargeable batteries are not to be recharged.
- Rechargeable batteries are to be removed from the product before being charged.
- Rechargeable batteries are only to be charged under adult supervision.
- Do not mix alkaline, standard (carbon-zinc), or rechargeable batteries.
- Do not mix old and new batteries.
- Only batteries of the same or equivalent type as recommended are to be used.
- Batteries are to be inserted with the correct polarity.
- Exhausted batteries are to be removed from the product.
- The supply terminals are not to be short-circuited.
- Dispose of battery(ies) safely.
- Do not dispose of this product in a fire. The batteries inside may explode or leak.

Protect the environment by not disposing of this product or any batteries with household waste. This symbol indicates that this product shall not be treated as household waste. Check your local authority for recycling advice and facilities.



### FOR PRODUCT SOLD IN USA

This device complies with Part 15 of the FCC Rules. Operation is subject to the following two conditions:  
 (1) This device may not cause harmful interference, and (2) this device must accept any interference received, including interference that may cause undesired operation.

• This equipment has been tested and found to comply with the limits for a Class B digital device, pursuant to part 15 of the FCC rules. These limits are designed to provide reasonable protection against harmful interference in a residential installation. This equipment generates, uses and can radiate radio frequency energy and, if not installed and used in accordance with the instructions, may cause harmful interference to radio communications. However, there is no guarantee that interference will not occur in a particular installation. If this equipment does cause harmful interference to radio or television reception, which can be determined by turning the equipment off and on, the user is encouraged to try to correct the interference by one or more of the following measures:

- Reorient or relocate the receiving antenna.
- Increase the separation between the equipment and receiver.
- Connect the equipment into an outlet on a circuit different from that to which the receiver is connected.
- Consult the dealer or an experienced radio/TV technician for help.

• NOTE: Changes or modifications not expressly approved by the manufacturer responsible for compliance could void the user's authority to operate the equipment.

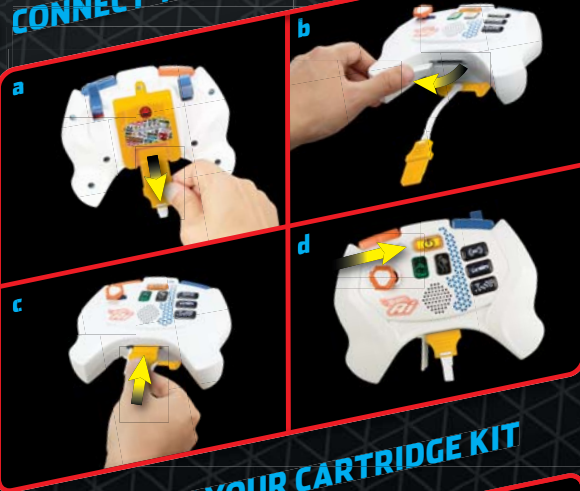


# PREP CONTROLLER & CARTRIDGE CONTINUED

# WHAT YOU GET INSIDE

3

## CONNECT YOUR CARTRIDGE KIT



- Take out the cable.
  - Open the port cover.
  - Plug the cable into the port.
  - Press the **POWER ON** button to set up your game.
- Follow the voice prompts to set up your game.

### IMPORTANT!

Always make sure that the Controller is turned OFF before the Cartridge cable is inserted or removed. To turn OFF the Controller, press the power button when the Controller is active or by removing the batteries.

4

## DISCONNECT YOUR CARTRIDGE KIT



- Press the **POWER OFF** button to switch off your controller.
- Remove the cable.
- Close the port cover.
- Store back the cable.

### REMEMBER!

Always turn OFF your Controller before removing the Cartridge.

## 1 HOT WHEELS® Ai CAR BODY



BOWSER™ SMART CAR

## 4 HOT WHEELS® Ai WHEEL COVERS



## 1 HOT WHEELS® Ai CARTRIDGE KIT



6

3



# VEHICLE CUSTOMIZATION

HOT WHEELS® Ai lets you customize your race vehicle by swapping SMART CAR body shells and wheel covers.

1 DETACH AT FRONT



2 RAISE FRAME AND PULL FORWARD



3 ATTACH REAR FIRST



4 SNAP FRONT INTO PLACE



## CHANGING VEHICLE WHEEL COVERS

4



ATTACH



## PREP CONTROLLER & CARTRIDGE

HOT WHEELS® Ai SMART CAR & CONTROLLER SOLD SEPARATELY, SUBJECT TO AVAILABILITY.

1

PREP YOUR GAMING CONTROLLER (NOT INCLUDED)

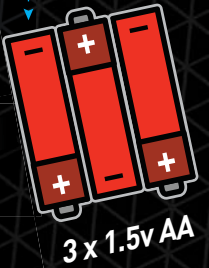
- Open and remove the original battery cover with a Phillips head screwdriver (not included).



2

SWAP YOUR BATTERY COVER

- Attach the CARTRIDGE KIT to your controller with a Phillips head screwdriver (not included).
- Batteries not included. Dispose of batteries safely.



3 x 1.5v AA

5