

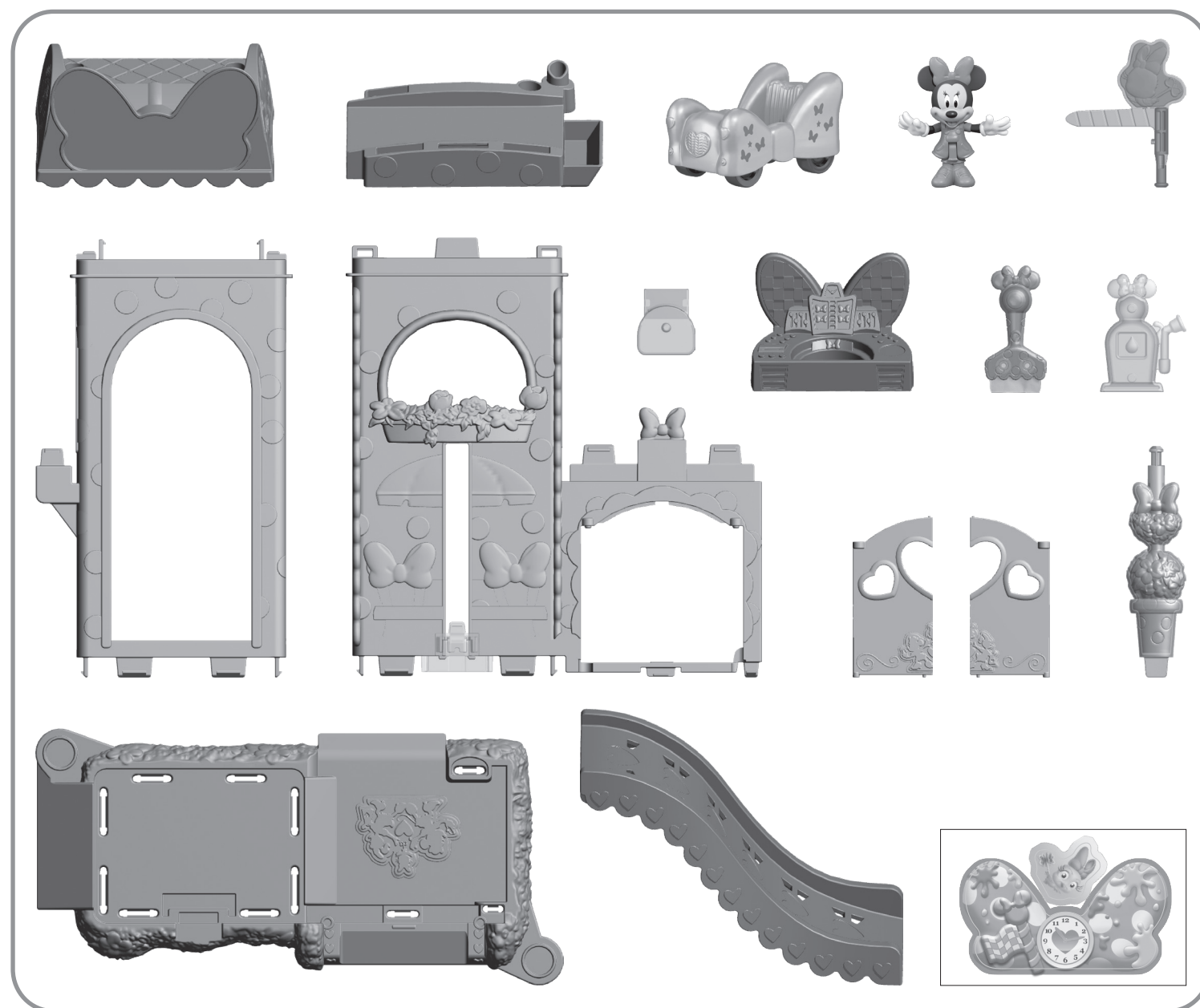


Paint N' Prep Station

INSTRUCTIONS

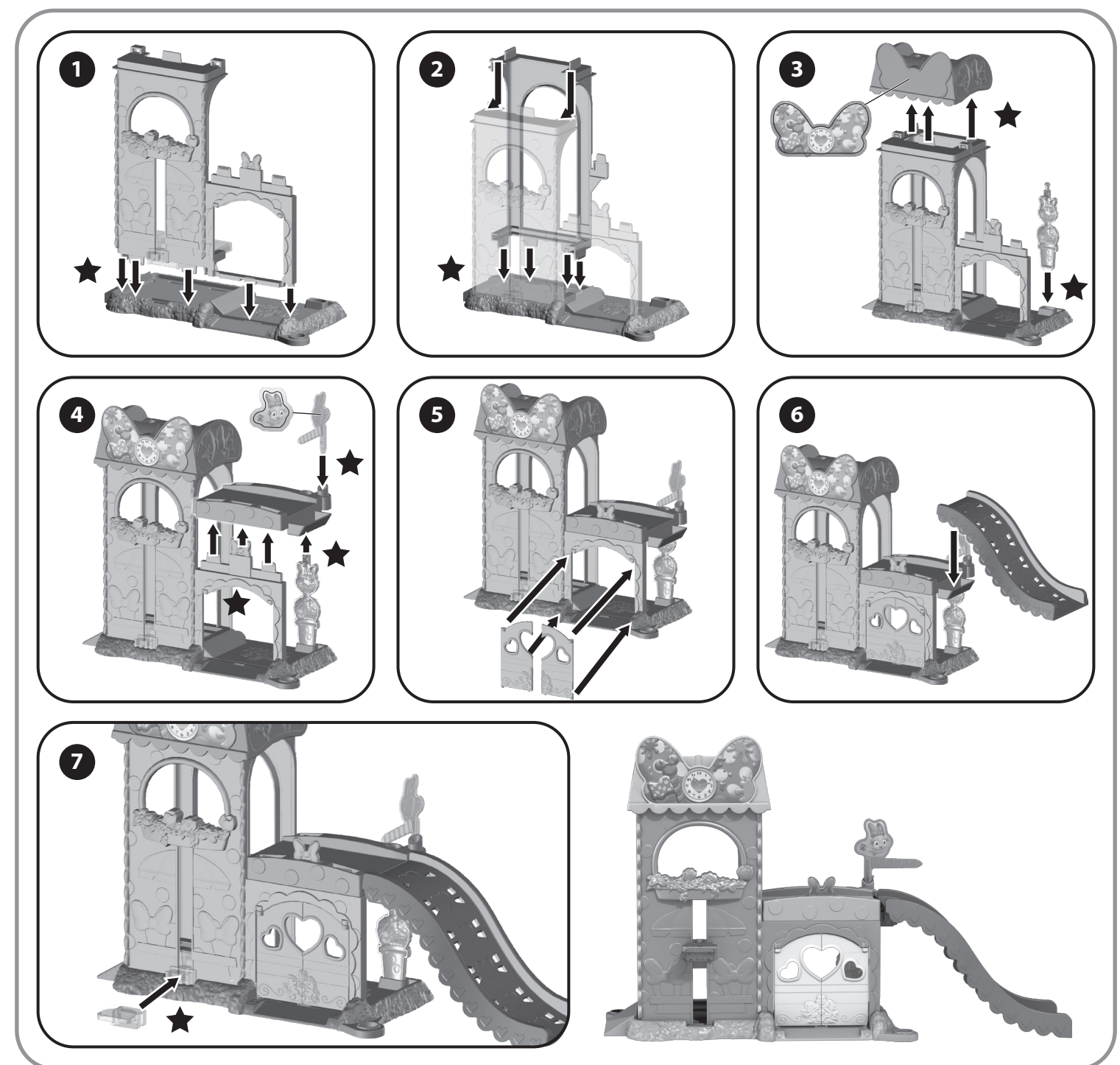
Keep these instructions for future reference as they contain important information.

WHAT'S INCLUDED



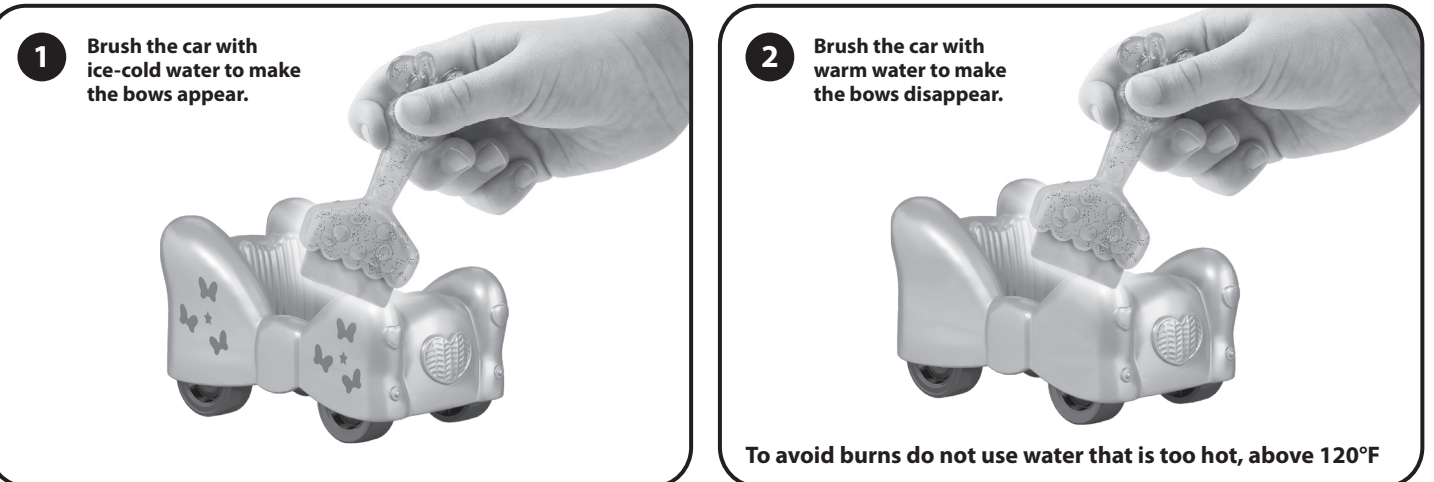
ASSEMBLY

★ **NOTE:** Assembly steps that are marked with a star are "one-time snaps". Once these pieces are snapped together, they cannot be taken apart.



How To Play

The colder/hotter the water is, the better it will work.



CONSUMER ASSISTANCE
1-800-432-5437 (US & Canada)
1300 135 312 (Australia)
service.fisher-price.com

Fisher-Price, Inc., 636 Girard Avenue, East Aurora, NY 14052.
Hearing-impaired consumers: 1-800-382-7470.

Outside the United States:

Canada: Mattel Canada Inc., 6155 Freemont Blvd.,
Mississauga, Ontario L5R 3W2; www.service.mattel.com.
Great Britain: Mattel UK Ltd, Vanwall Business Park,
Maidenhead SL6 4UB, Helpline: 01628 500303,
www.service.mattel.com/uk
Mattel Europa B.V., Gondel 1, 1186 MJ Amstelveen, Nederland.
Australia: Mattel Australia Pty. Ltd., 658 Church Street,
Locked Bag #870, Richmond, Victoria 3121 Australia.
New Zealand: 16-18 William Pickering Drive,
Albany 1331, Auckland.
South Africa: Mattel South Africa (PTY) LTD, Office 102 I3,
30 Melrose Boulevard, Johannesburg 2196.

© Disney
©2018 Mattel.
® and ™ designate U.S. trademarks of Mattel,
except as noted. **PRINTED IN CHINA.**
Mattel East Asia Ltd., Room 503-09, North Tower,
World Finance Centre, Harbour City, Tsimshatsui,
HK, China.
Tel.: (852) 3185-6500.

Adult assembly required.
No tools needed.

Color change will last longer if you do not
expose this toy to intense heat or direct
sunlight for prolonged periods of time.

Water toys sometimes get messy.
Protect play surfaces before use.
Drain, rinse, clean and dry all items
thoroughly before storing.

FPK60

Fisher-Price

FPK60-0970-1101713346-DOM

Item No : FPK60-0970-1101713346-DOM-IS
Size : A4
Paper : 100% Recycled Paper, 70 gsm
Color : Black + Black
Date : 15 Jan., 2018 (Tracy Mui)