

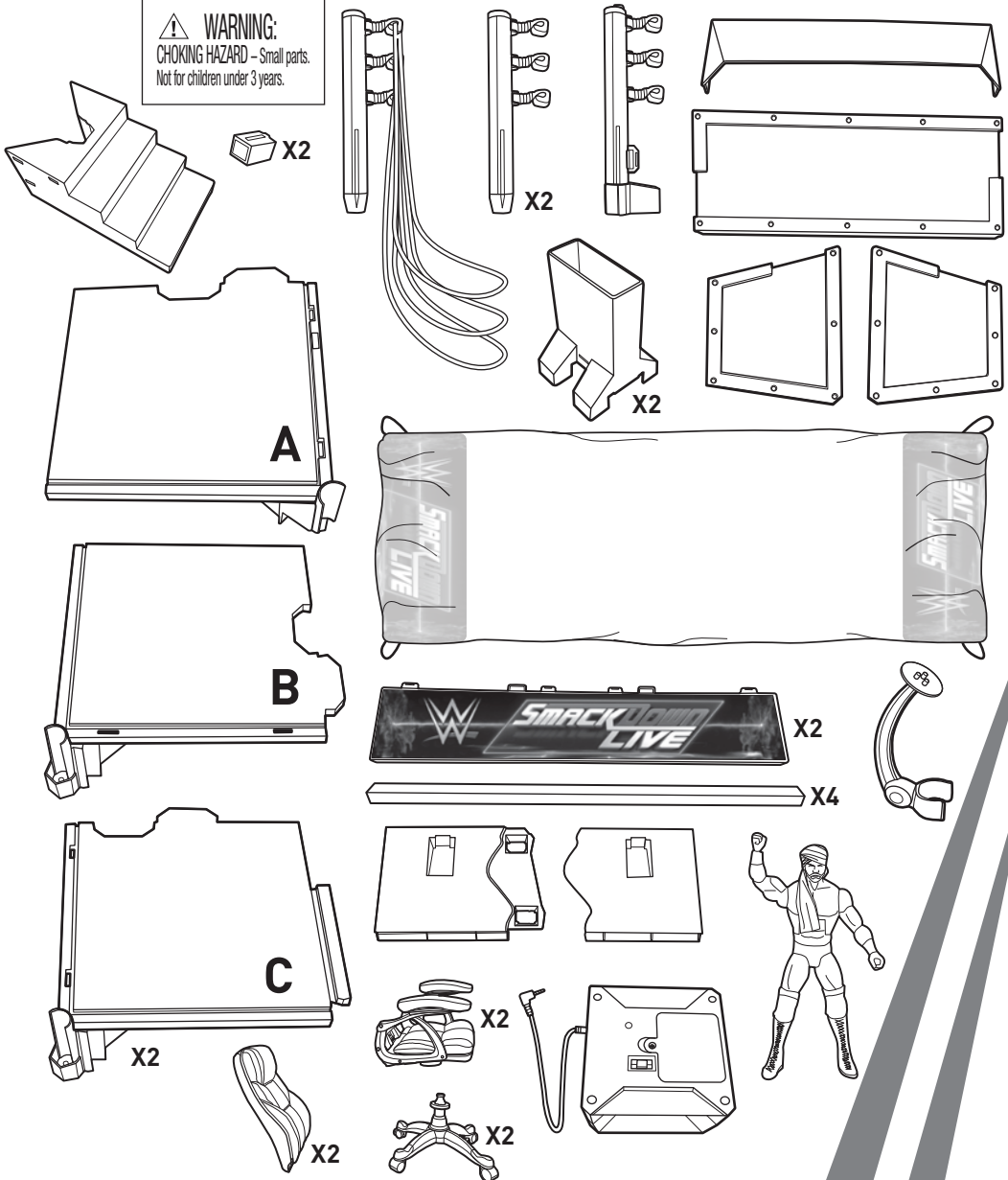
SMACKDOWN LIVE MAIN EVENT RING INSTRUCTIONS



Please keep these instructions for future reference as they contain important information.

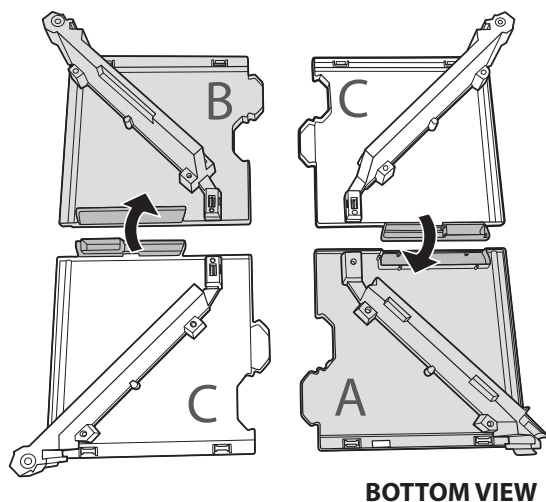
CONTENTS

WARNING:
CHOKING HAZARD - Small parts.
Not for children under 3 years.

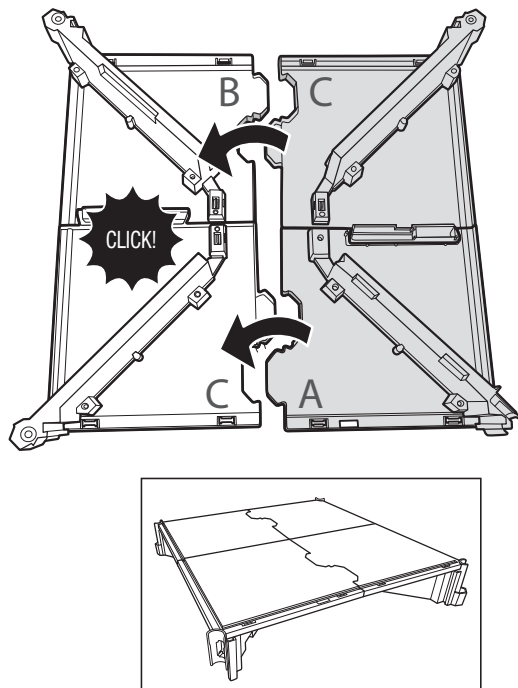


1. ASSEMBLY

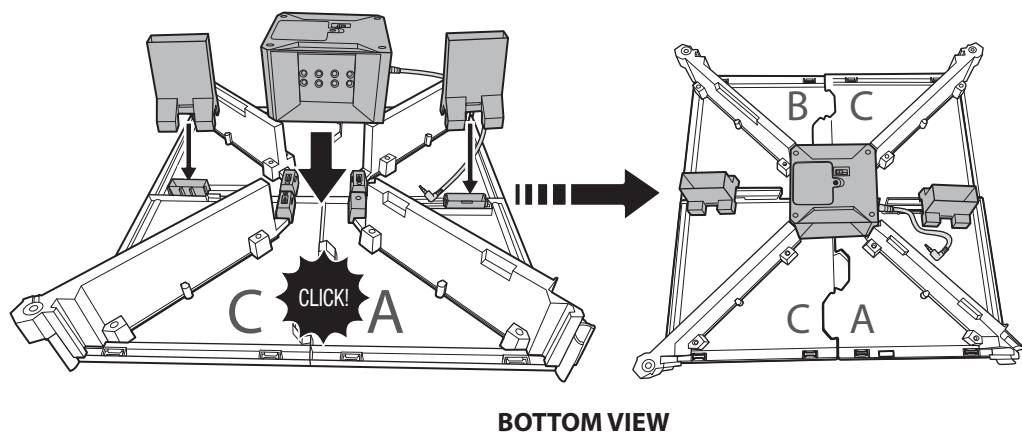
1A. Refer to letters on parts to assemble the ring.



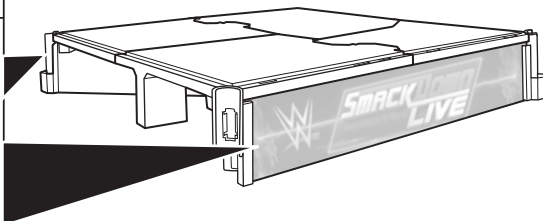
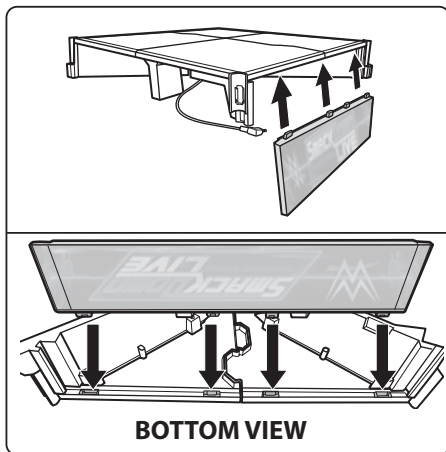
1B.



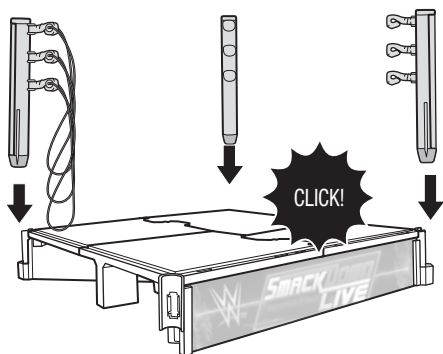
2.



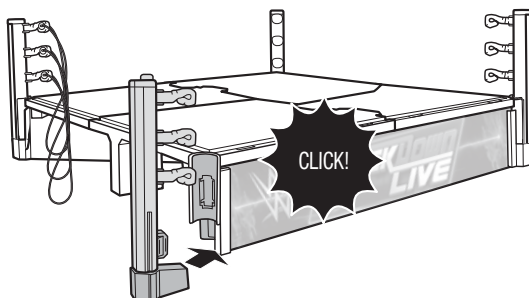
3.



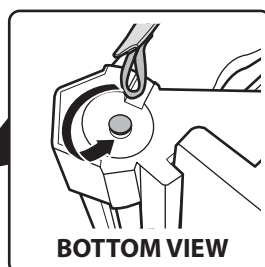
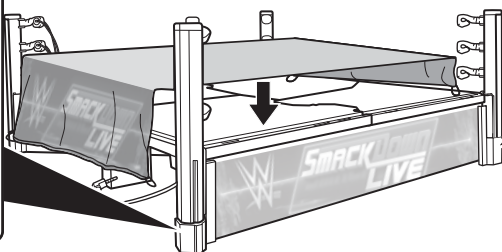
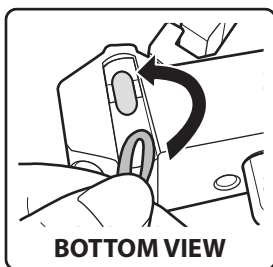
4A.



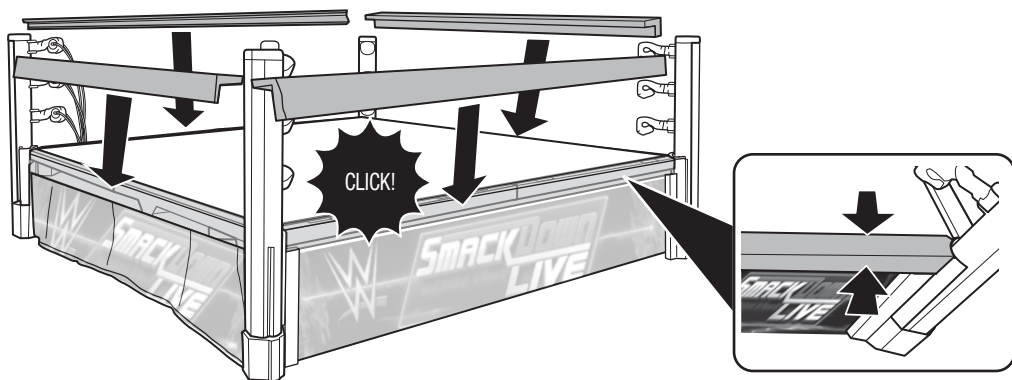
4B.



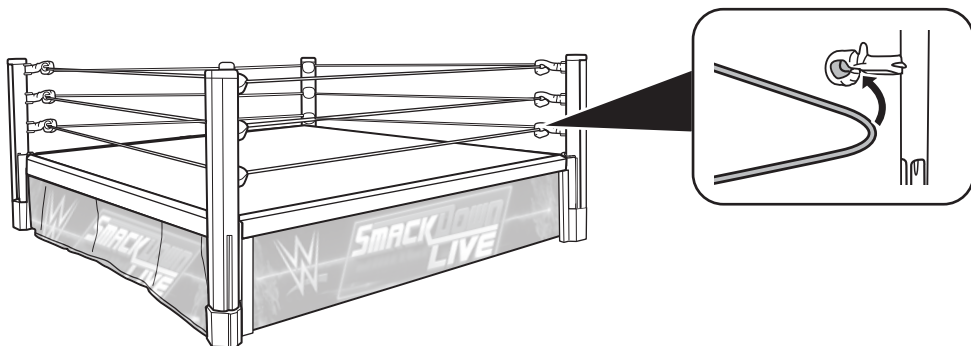
5. Place and spread apron on the ring. Tie the apron down on all four corners.



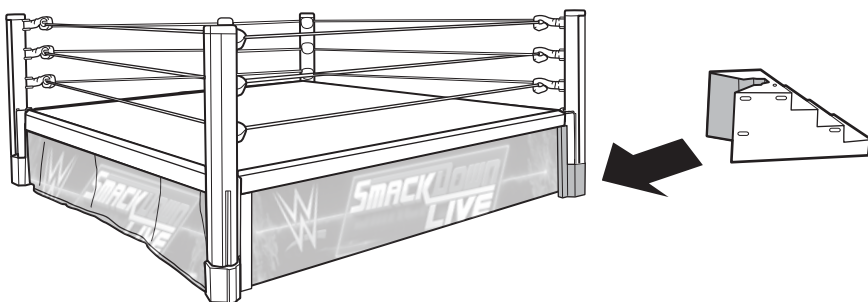
6.



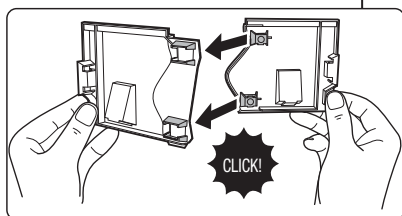
7. Attach ropes, starting from the bottom rope up.



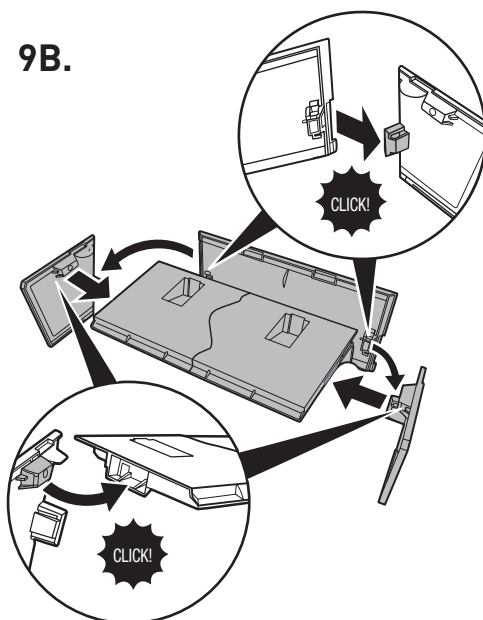
8. Place the steps on any corner of the ring.



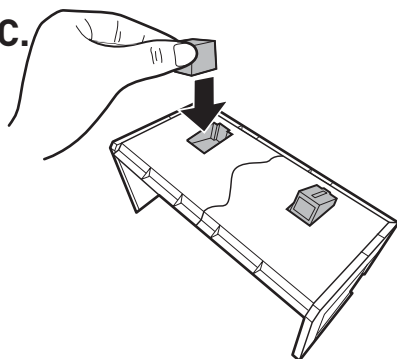
9A.



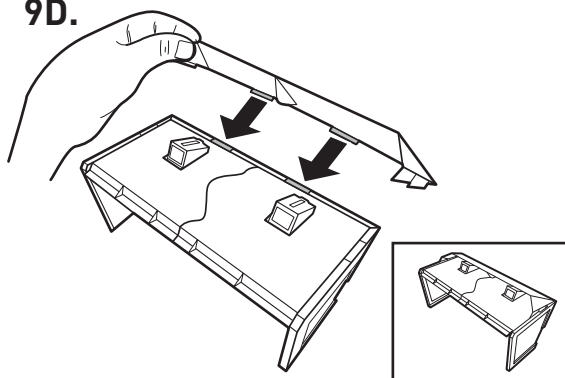
9B.



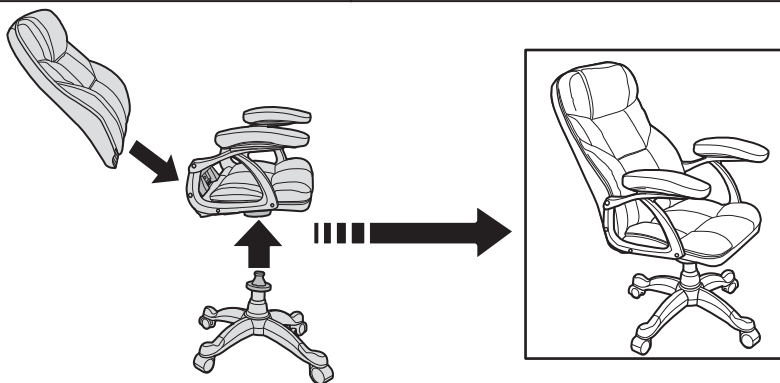
9C.



9D.



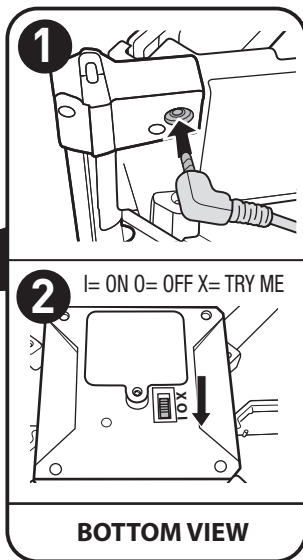
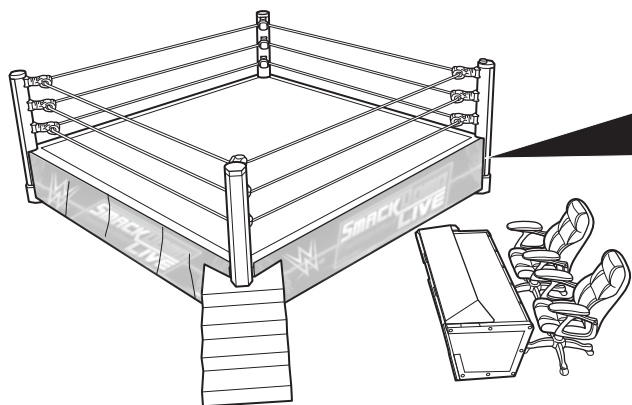
10.



X2

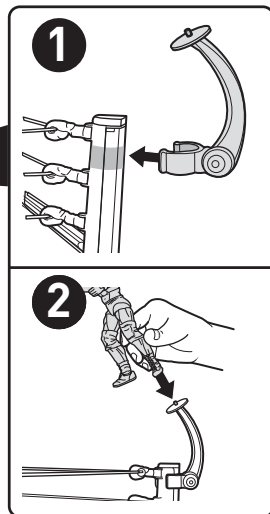
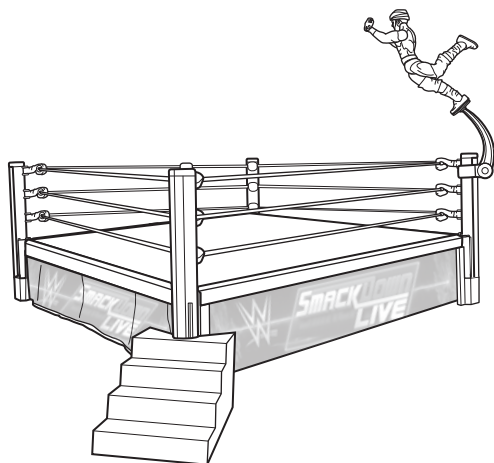
2. SET UP

Connect power cord to the ring and slide power switch to ON (1).



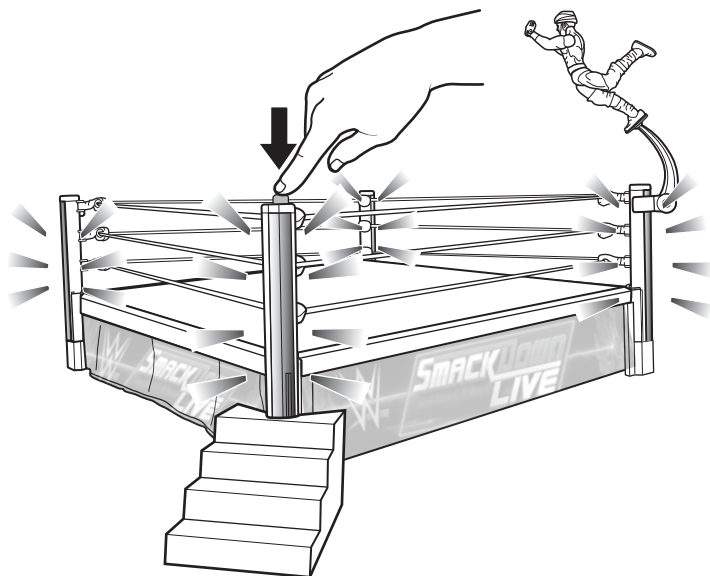
3. TO PLAY

1. Attach stand for high-flying poses!

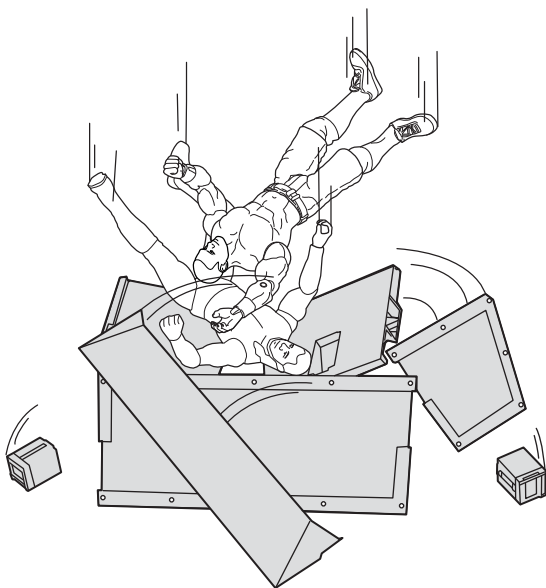


3. TO PLAY (CONTD.)

2. Press ring post to light-up ring apron and posts.



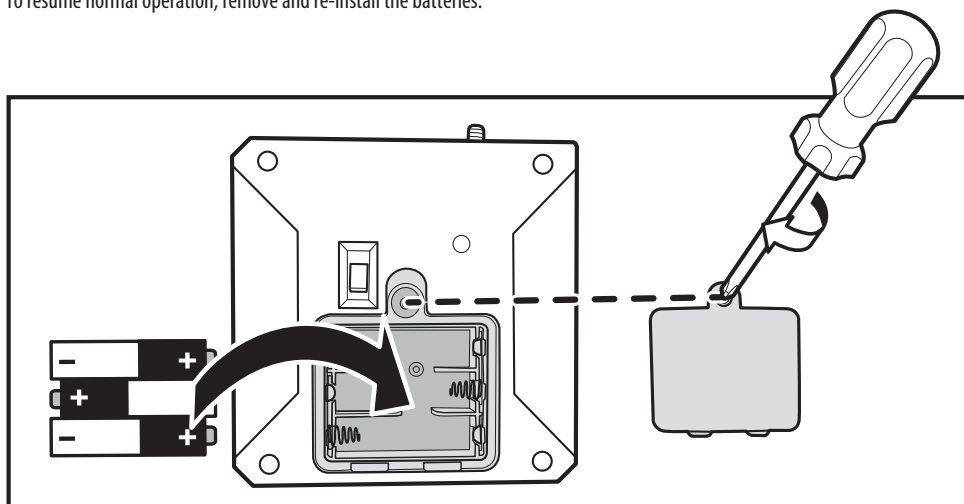
3. Destroy the breakaway table!



JINDER MAHAL™ FIGURE INCLUDED. ADDITIONAL FIGURES AND ACCESSORIES SOLD SEPARATELY. SUBJECT TO AVAILABILITY. FIGURES CANNOT PERFORM MOVES AS SHOWN.

4. BATTERY INSTALLATION

- Batteries included are for demonstration purposes only.
- Replace the batteries if lights dim.
- Locate the battery box on the bottom of the ring.
- Unscrew the battery cover with a Phillips head screwdriver (not included).
- Remove batteries and dispose of them safely.
- Install 3 new AA (LR6) batteries in the orientation (+/-) shown.
- Replace battery cover and tighten screw.
- For longer life, use alkaline batteries.
- When exposed to an electrostatic source, the product may malfunction.
To resume normal operation, remove and re-install the batteries.



All WWE programming, talent names, images, likenesses, slogans, wrestling moves, trademarks, logos and copyrights are the exclusive property of WWE and its subsidiaries. All other trademarks, logos and copyrights are the property of their respective owners. © 2018 WWE. All Rights Reserved.

©2018 Mattel. ® and ™ designate U.S. trademarks of Mattel, except as noted. Mattel, Inc., 636 Girard Avenue, East Aurora, NY 14052, U.S.A. Consumer Services 1-800-524-8697. Mattel U.K. Ltd., Vanwall Business Park, Maidenhead SL6 4UB. Helpline 01628 500303. Mattel Australia Pty., Ltd., Richmond, Victoria. 3121. Consumer Advisory Service - 1300 135 312. Mattel East Asia Ltd., Room 503-09, North Tower, World Finance Centre, Harbour City, Tsimshatsui, HK, China. Tel.: (852) 3185-6500. Diimport & Diedarkan Oleh: Mattel Southeast Asia Pte. Ltd., No 19-1, Tower 3 Avenue 7, Bangsar South City, No 8, Jalan Kerinchi, 59200 Kuala Lumpur, Malaysia. Tel: 03-78803817, Fax: 03-78803867.

FTC05-0970
1101758939-D0M

