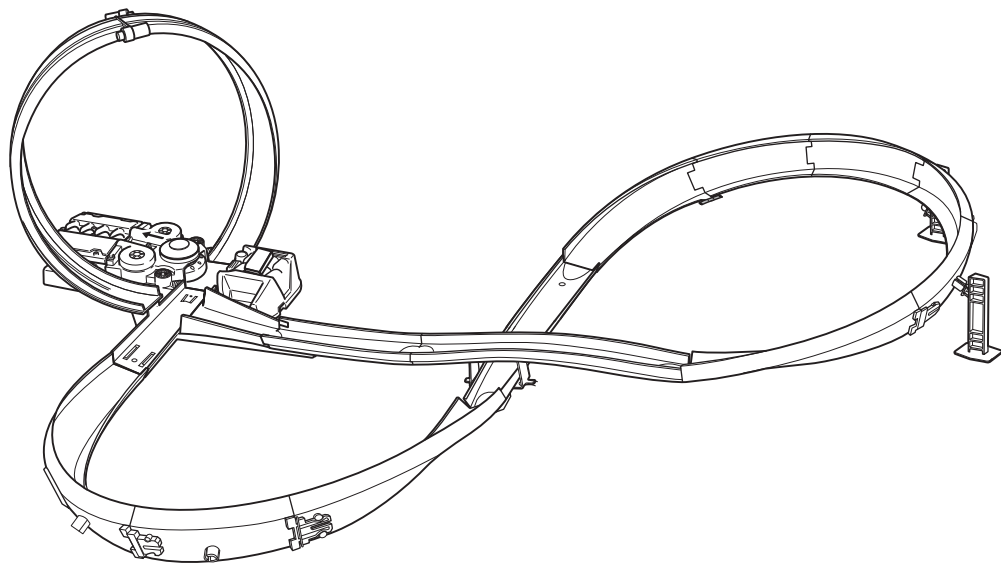




INSTRUCTIONS

FIGURE 8 RACEWAY



5+

service.mattel.com

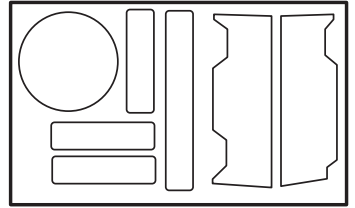
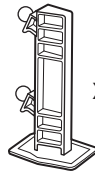
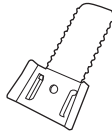
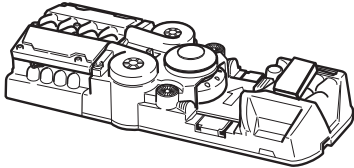
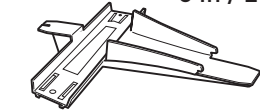
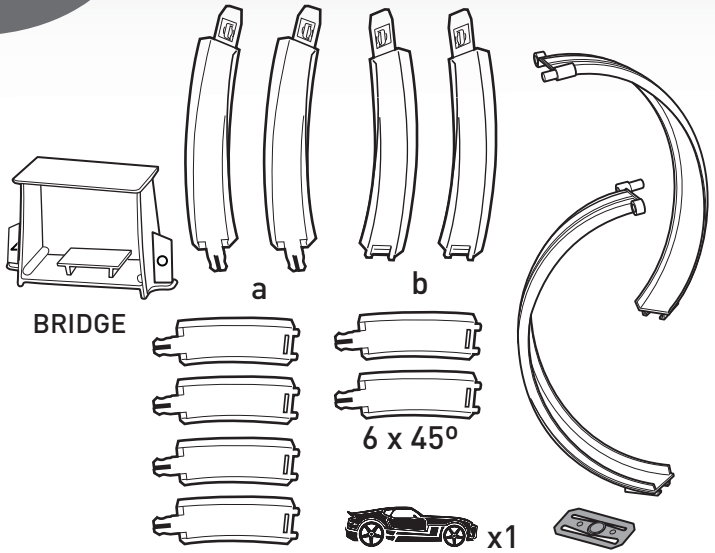
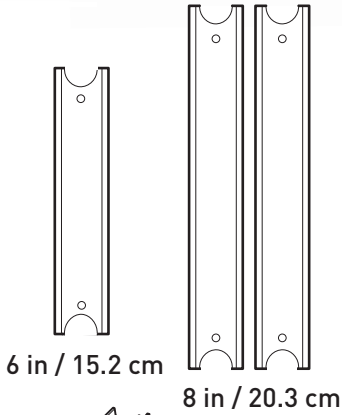
HOTWHEELS.COM

PLEASE KEEP THESE INSTRUCTIONS FOR FUTURE
REFERENCE AS THEY CONTAIN IMPORTANT INFORMATION.



FTC97-0970
1101748874-DOM

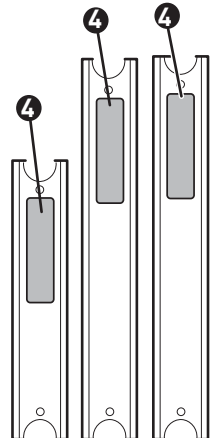
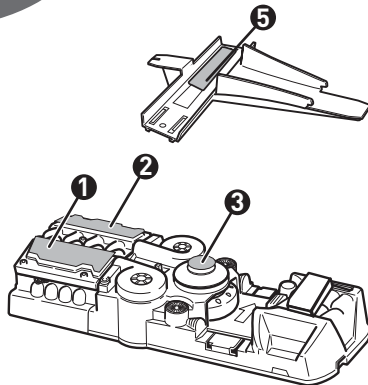
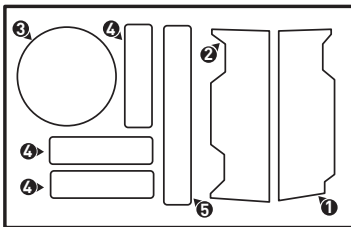
CONTENTS



REQUIRES 2 "D" SIZE (LR20) ALKALINE BATTERIES (NOT INCLUDED).

APPLY LABELS

LABEL SHEET



BATTERY SAFETY INFORMATION

In exceptional circumstances batteries may leak fluids that can cause a chemical burn injury or ruin your product. To avoid battery leakage:

- Non-rechargeable batteries are not to be recharged.
- Rechargeable batteries are to be removed from the product before being charged.
- Rechargeable batteries are only to be charged under adult supervision.
- Do not mix alkaline, standard (carbon-zinc), or rechargeable batteries.
- Do not mix old and new batteries.
- Only batteries of the same or equivalent type as recommended are to be used.
- Batteries are to be inserted with the correct polarity.
- Exhausted batteries are to be removed from the product.
- The supply terminals are not to be short-circuited.
- Dispose of battery(ies) safely.
- Do not dispose of this product in a fire. The batteries inside may explode or leak.

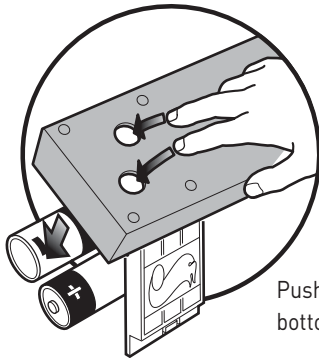
Battery Performance Note: For best performance use alkaline batteries. Battery life may vary depending on battery brand.



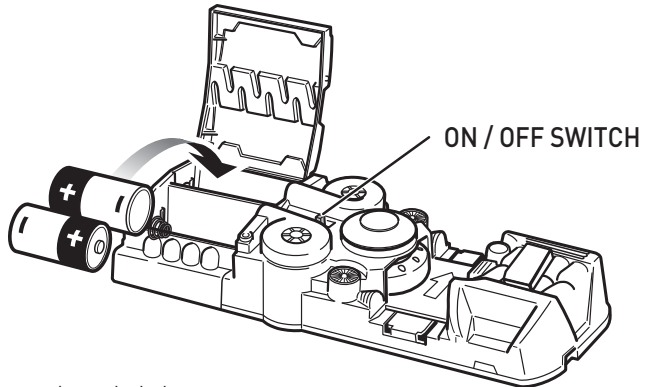
Protect the environment by not disposing of this product or any batteries with household waste. This symbol indicates that this product shall not be treated as household waste. Check your local authority for recycling advice and facilities.

BATTERY INSTALLATION

Open battery cover and insert 2 "D" size alkaline batteries (not included) as shown. For best performance, use alkaline batteries. Replace the batteries when the booster no longer propels the car through the set.

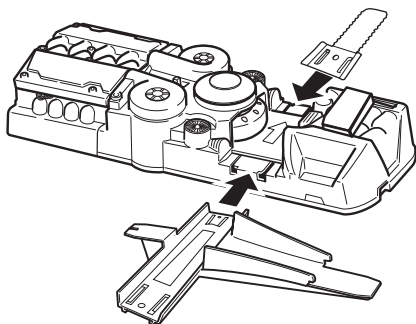


Push fingers through holes on bottom to remove batteries.

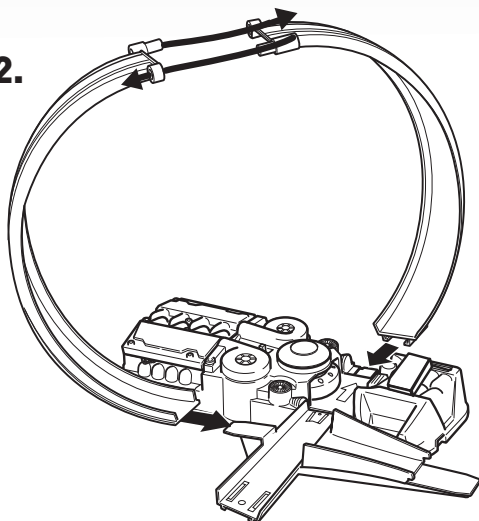


ASSEMBLY

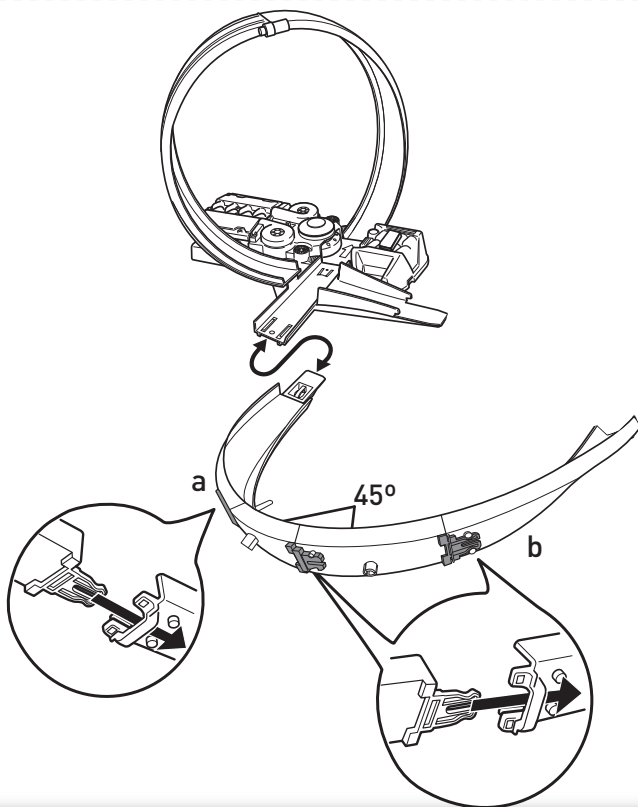
1.



2.

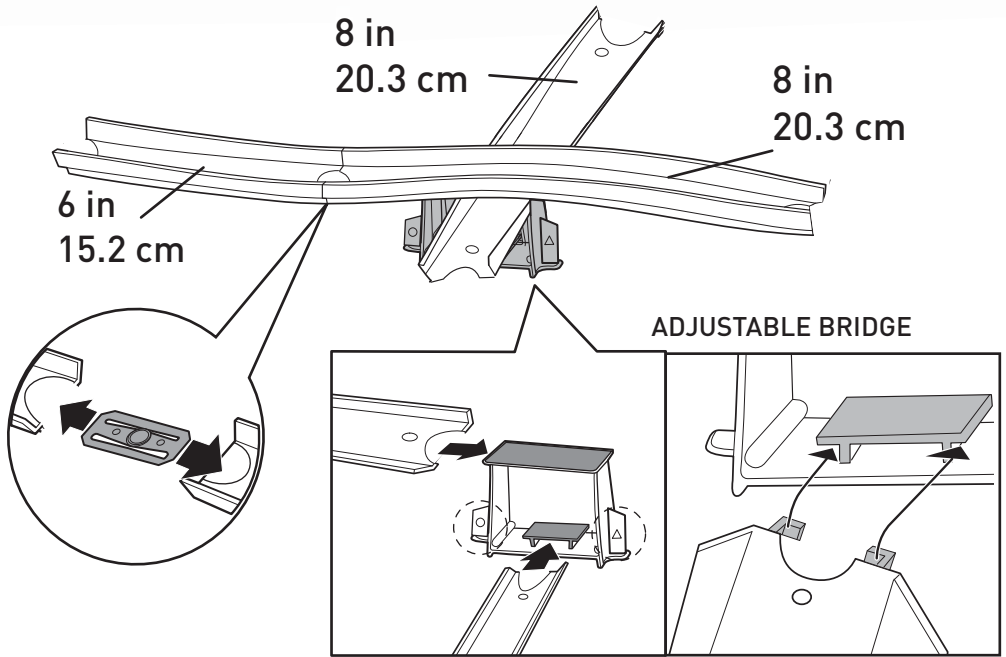


3.

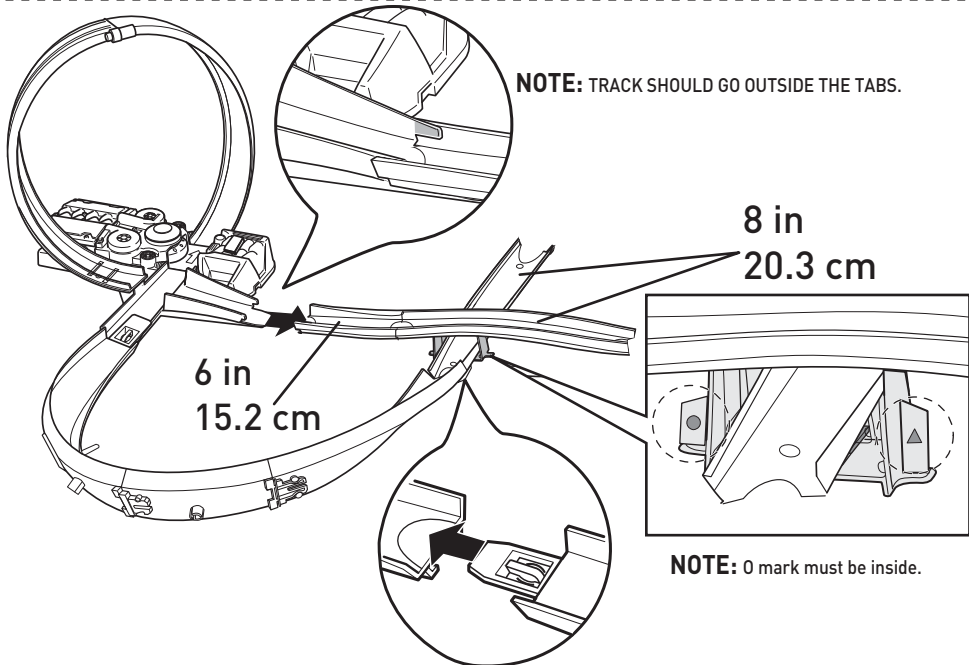


ASSEMBLY (CONTD.)

4.

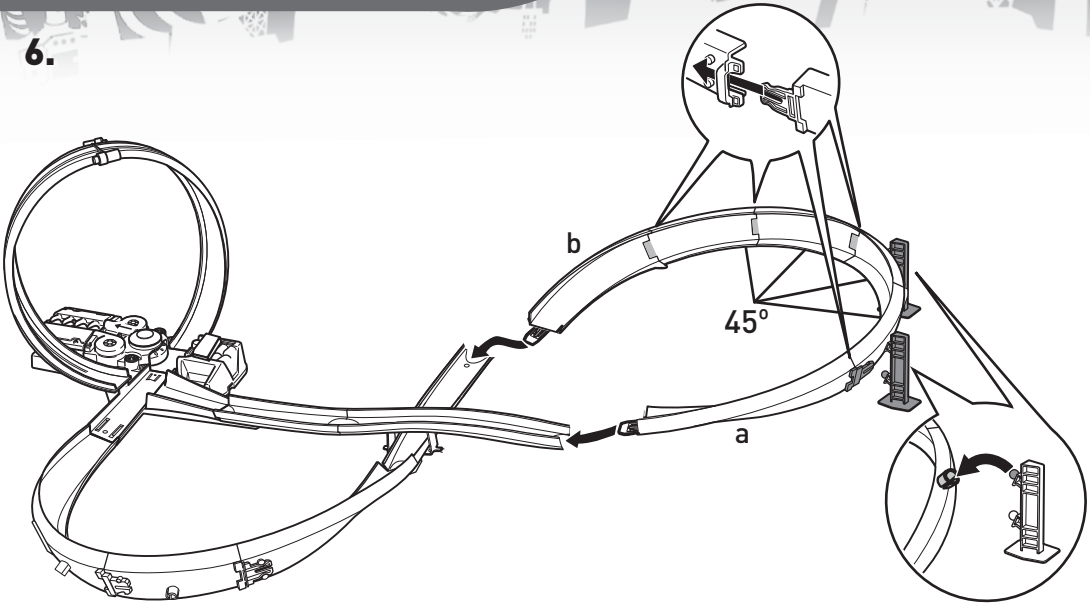


5.



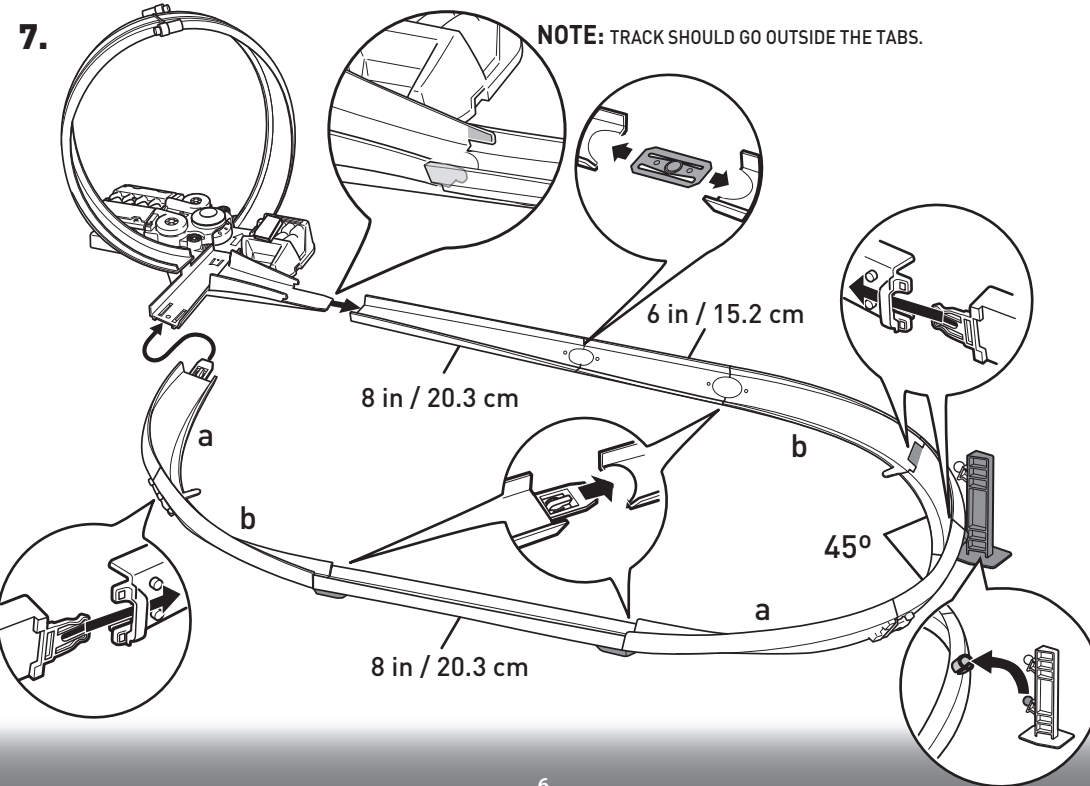
ASSEMBLY (CONTD.)

6.



7.

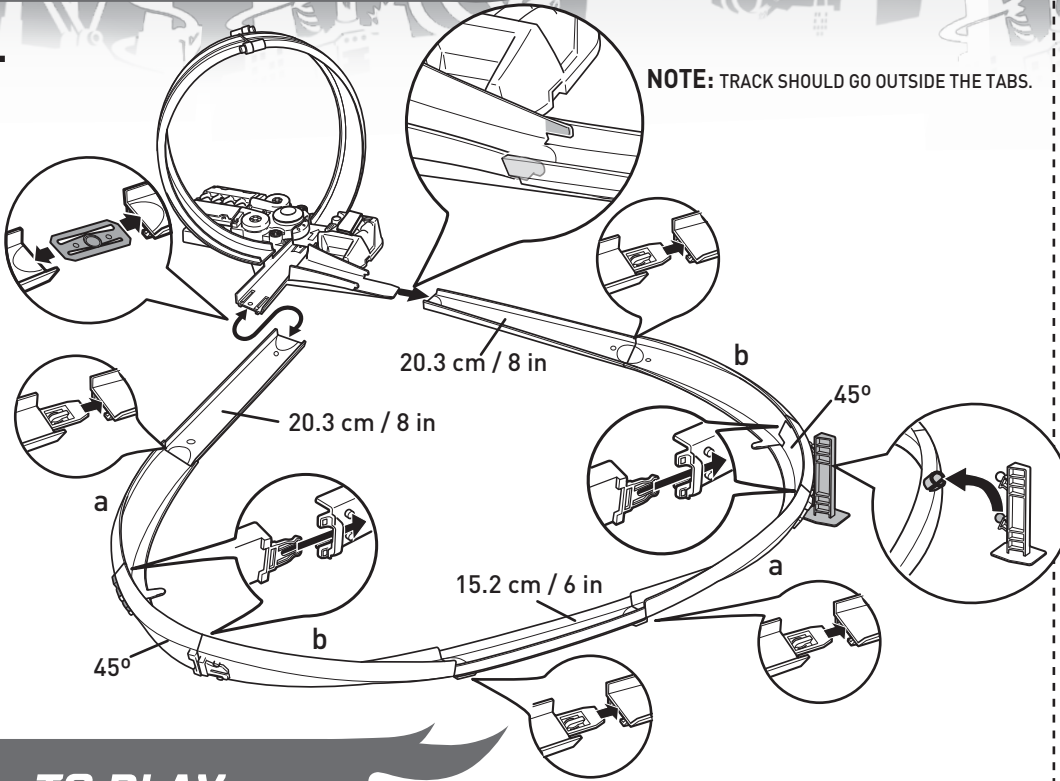
NOTE: TRACK SHOULD GO OUTSIDE THE TABS.



ASSEMBLY (CONTD.)

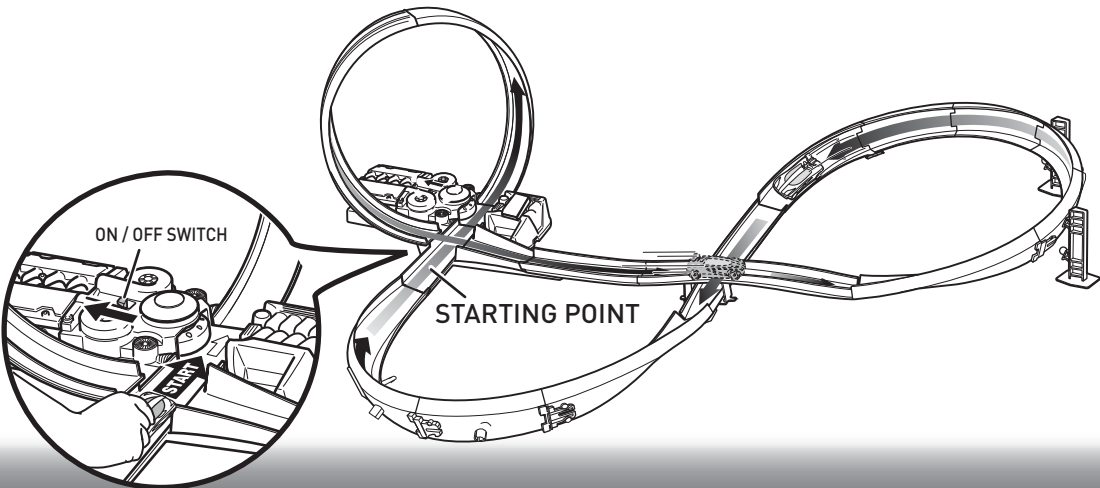
8.

NOTE: TRACK SHOULD GO OUTSIDE THE TABS.



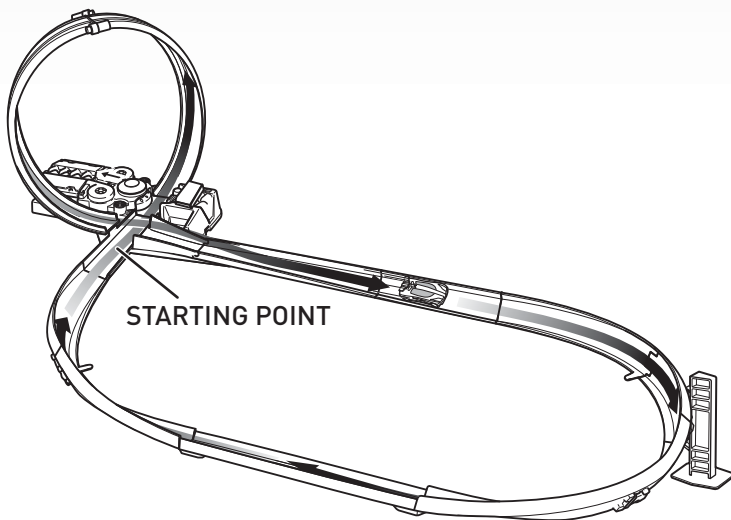
TO PLAY

1. Turn power switch on. Place car at starting point as shown.

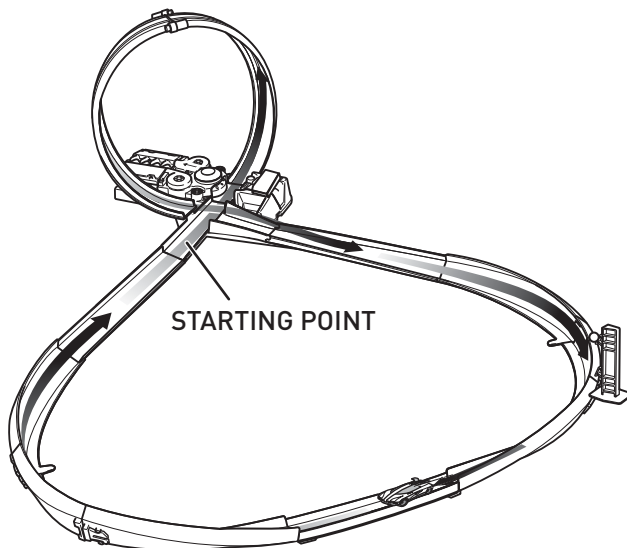


TO PLAY (CONTD.)

2.



3.



NOT FOR USE WITH SOME HOT WHEELS® VEHICLES.