



**Overhead Gym**



**Sit & Play**

Please keep this instruction sheet for future reference,  
as it contains important information.

Adult assembly is required.

Tool required for assembly: Phillips screwdriver (not included).



[www.fisher-price.com](http://www.fisher-price.com)

# Safari Activity Gym

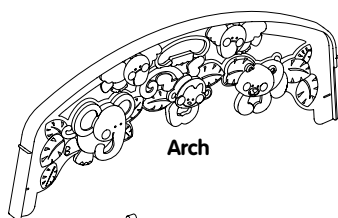
## CAUTION

This product contains small parts. For assembly by an adult.

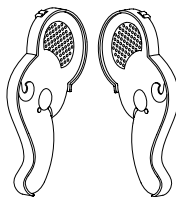
## WARNING

To prevent possible entanglement injury, **NEVER** place gym or suspend links in crib or playpen. **NEVER** add strings, ties or other products to this item.

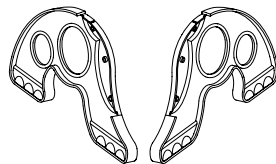
## Parts



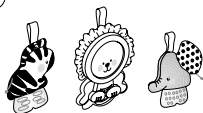
Arch



Elephant Heads



Elephant Legs



3 Soft Toys



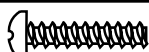
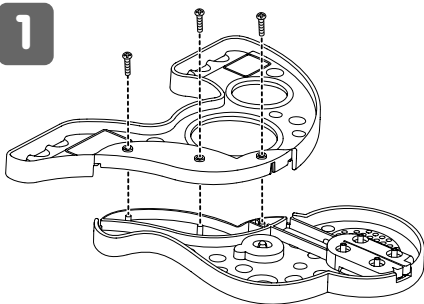
10 Links



#6 X  $\frac{5}{8}$ " Screw - 6  
Shown Actual Size

## Assembly

1

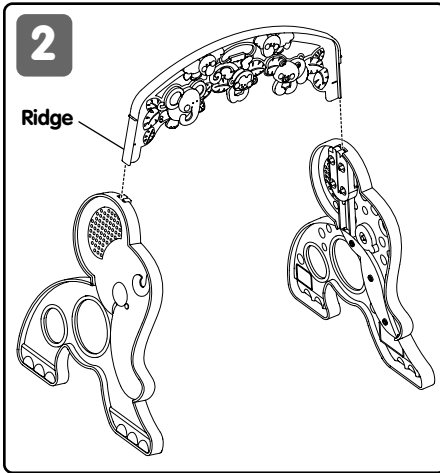


#6 X  $\frac{5}{8}$ " Screw - 6

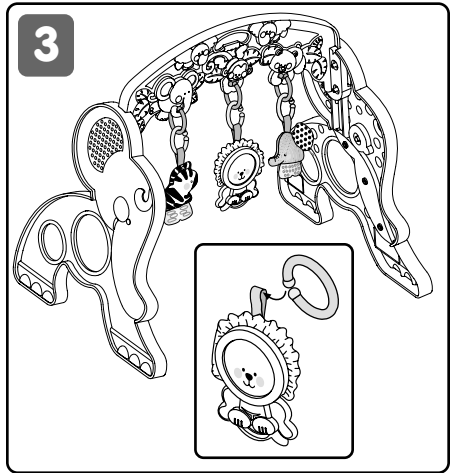
- Fit the matching elephant head, textured side down on to the leg.
- Insert three #6 x  $\frac{5}{8}$ " screws into the holes in the assembly. Tighten the screws with a Phillips screwdriver. Do not over-tighten.
- Repeat this procedure to assemble the other elephant assembly.

- Place an elephant leg, textured side down, on a flat surface.

## Assembly



- Fit the ridge on the arch into the slots in the elephant assemblies, as shown.



- To attach a link to a soft toy, gently pull open the link and slide the soft toy onto the link.
- To attach a link toy to the gym, gently pull open the link to clip it onto one of the attachment tabs on the gym.

## Helpful Hints



- For a young baby we recommend assembling the links and soft toys as shown in the photo. This arrangement will allow baby to reach the soft toys while lying underneath the gym.
- Rearrange the toys in different locations to keep baby amused!
- As baby grows, you can remove some of the links from the gym to keep the soft toys within baby's reach.
- The soft toys can be detached from the gym for take-along fun, wherever you and baby go!

## Care

- Wipe the gym and soft toys with a clean cloth lightly dampened with a mild cleaning solution. Wipe dry with a clean cloth.

## Consumer Information

### Questions? We'd like to hear from you!

Call Fisher-Price® Consumer Relations, toll-free at **1-800-432-5437**, 8 AM - 6 PM EST Monday through Friday. Hearing-impaired consumers using TTY/TDD equipment, please call 1-800-382-7470. Or, write to: Fisher-Price® Consumer Relations, 636 Girard Avenue, East Aurora, New York 14052.

### For countries outside the United States:

**CANADA: Questions? 1-800-567-7724.** Mattel Canada Inc., 6155 Freemont Blvd., Mississauga, Ontario L5R 3W2.

**GREAT BRITAIN:** Mattel UK Ltd, Vanwall Business Park, Maidenhead SL6 4UB. Helpline: 01628 500302.

**AUSTRALIA:** Mattel Australia Pty. Ltd., 658 Church Street, Locked Bag #870, Richmond, Victoria 3121 Australia. Consumer Advisory Service 1300 135 312.

**NEW ZEALAND:** 16-18 William Pickering Drive, Albany 1331, Auckland.

**ASIA:** Mattel East Asia Ltd, Room 1106, South Tower, World Finance Centre, Harbour City, Tsimshatsui, HK, China.