

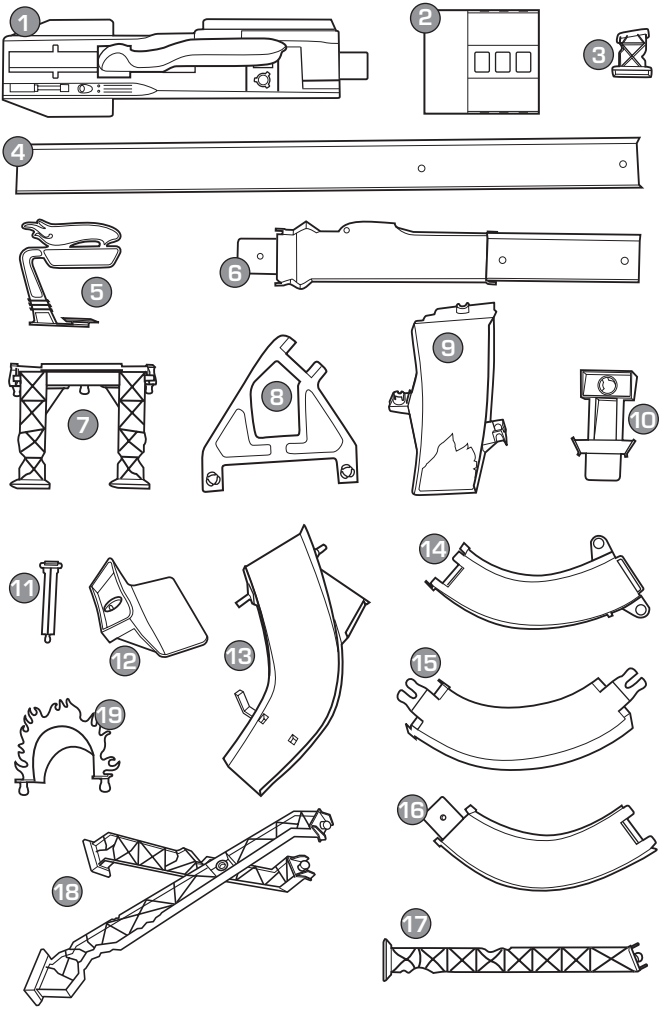


INSTRUCTIONS • MODE D'EMPLOI
• ANLEITUNG • ISTRUZIONI
• GEBRUIKSAANWIJZING
• INSTRUCCIONES • INSTRUÇÕES
• ANVISNINGAR • OHJEET • ΟΔΗΓΙΕΣ

- Please keep these instructions for future reference as they contain important information.
- Conserver ce mode d'emploi pour s'y référer au besoin car il contient des informations importantes.
- Diese Anleitung bitte für mögliche Rückfragen aufbewahren. Sie enthält wichtige Informationen.
- Conservare queste istruzioni per futuro riferimento. Contengono importanti informazioni.
- Bewaar deze gebruiksaanwijzing. Kan later nog van pas komen.
- Sirvanse guardar estas instrucciones para futura referencia, ya que contienen información de importancia acerca de este juguete.
- Guardar estas instruções para referência futura pois têm informação importante.
- Spara de här anvisningarna för framtiden, de innehåller viktig information.
- Säilytä nämä ohjeet vastaisen varalle. Niissä on tärkeää tietoa.
- Κρατήστε αυτές τις οδηγίες για μελλοντική χρήση καθώς περιέχουν σημαντικές πληροφορίες.

4+

CONTENTS: • CONTIENT: • INHALT: • CONTENUTO:
INHOUD: • CONTENIDO: • CONTEÚDO: • INNEHÅLL:
SISÄLTÖ: • ΠΕΡΙΕΧΟΜΕΝΑ:



© 2005 Mattel, Inc. All Rights Reserved. Tous Droits Réservés. Mattel Canada Inc., Mississauga, Ontario L5R 3W2. You may call us free at 1-800-665-6288. Mattel U.K. Ltd., Vanwall Business Park, Maidenhead SL6 4UB. Helpline: 01628 500303. Mattel France, 27/33 rue d'Antony, Silic 145, 94523 Rungis Cedex N° Indigo 0 825 00 00 25 (0,15 € TTC/mn) ou www.allomattel.com. Mattel B.V., Postbus 576, 1180 AN Amstelveen, Nederland 0800 - 2628835. Mattel Belgium, Trade Mart, Atomiums square, Bogota 202 - B 275, 1020 Brussel, België. Deutschland: Mattel GmbH, An der Trift 75, D-63303 Dreieich. Schweiz: Mattel AG, Monbijoustrasse 68, CH-3000 Bern 23. Österreich: Mattel Ges.m.b.H., Triester Str. 14, A-2355 Wiener Neudorf. Mattel Scandinavia A/S, Ringager 4C, DK-2605 Brøndby. Mattel Northern Europe A/S., Sinikalliontie 3, 02630 ESPOO, Puh. 0303 9060. Mattel Srl., 28040 Oleggio Castello, Italy. Mattel España, S.A., Aribau 200. 08036 Barcelona. cservice.spain@mattel.com. Mattel Portugal Lda., Av. da República, nº 90/96, 2º andar Fracção 2, 1600-206 Lisboa. Mattel AEBE, Ελληνικού 2, Ελληνικό 16777. ΕΛΛΑΔΑ. Mattel Australia Pty Ltd., Richmond, Victoria. 3121. 1300 135 312. Mattel East Asia Ltd, Room 1106, South Tower, World Finance Centre, Harbour City, Tsimshatsui, HK, China. Diimport & Diedarkan Oleh: Mattel SEA Ptd Ltd. (993532-P) Lot 13.5, Menara Lien Hoe, Persiaran Tropicana Golf Country Resort, 47410 P.J. Tel: 03-78803817, Fax: 03-78803867. Mattel, Inc., 333 Continental Blvd., El Segundo, CA 90245 U.S.A. Consumer Affairs: 1 (800) 524-TOYS. Importado y distribuido por Mattel de México, S.A. de C.V., Insurgentes Sur # 3579, Torre 3, Oficina 601, Col. Tlalpan, Delegación Tlalpan, C.P. 14020, México, D.F. TEL: 54-49-41-00. MME-920701-NB3. Mattel Chile, S.A., Avenida Américo Vesputio 501-B, Quilicura, Santiago. Mattel de Venezuela, C.A., Ave. Mara, C.C. Macaracuay Plaza, Torre B, Piso 8, Colinas de la California, Caracas 1071. Mattel Argentina S.A., Curupaytí 1186, (1607) - Villa Adelina, Buenos Aires. Mattel Colombia, S.A., calle 123#7-07 P.5, Bogotá. Mattel do Brasil Ltda. - CNPJ : 54.558.002/0004-72 Av. Tamboré, 1400/1440 Quadra A de 02 a 03 - 06460-000 - Barueri - SP. Atendimento ao Consumidor: SAC 0800550780.

G7852-0520

G7852-9862-S1-G2



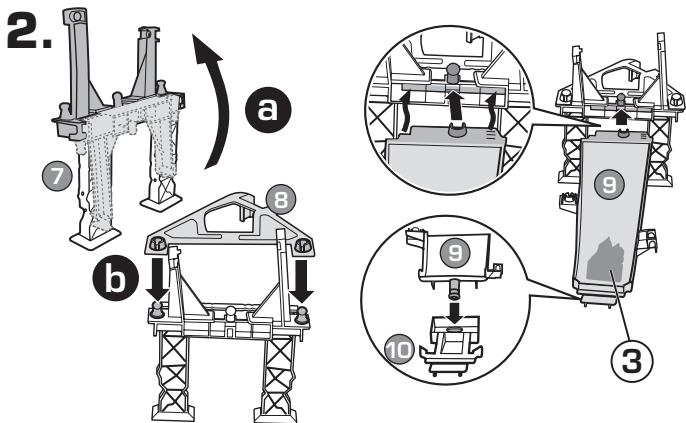
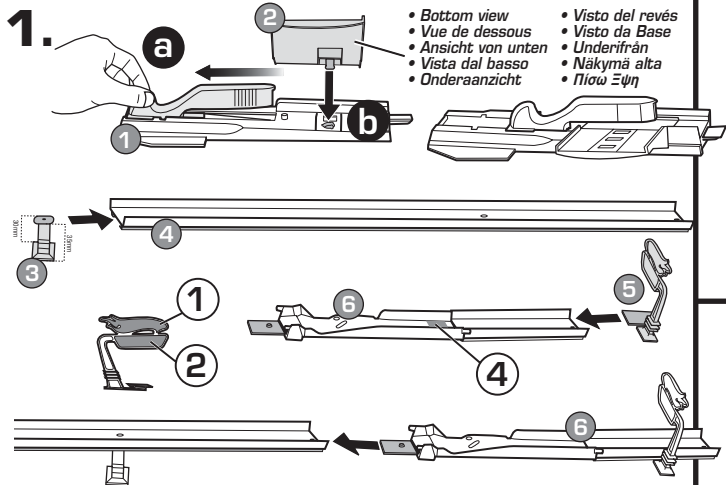
HOW TO ASSEMBLE AND APPLY LABELS
COMMENT ASSEMBLER ET COLLER LES AUTOCOLLANTS
ZUSAMMENBAU UND ANBRINGEN DER AUFKLEBER
MONTAGGIO E APLICAZIONE ADESIVI
HET INELKAAR ZETTEN EN HET OPPLAKEN VAN DE STICKERS
MONTAJE Y COLOCACIÓN DE LOS ADHESIVOS
PARA MONTAR E APLICAR OS AUTOCOLANTES
MONTERA OCH SÄTT FAST DEKALER
KOKOAMINEN JA TARROJEN KIINNITYS
ΣΥΝΑΡΜΟΛΟΓΗΣΗ ΚΑΙ ΤΟΠΟΘΕΤΗΣΗ ΑΥΤΟΚΟΛΛΗΤΩΝ



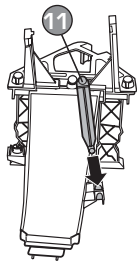
- APPLY LABELS AS SHOWN.
- APOSER LES AUTOCOLLANTS COMME ILLUSTRÉ.
- DIE AUFKLEBER WIE DARGESTELLT ANBRINGEN.
- APLICAZIONE GLI ADESIVI COME ILLUSTRATO
- PLAK DE STICKERS OP ZOALS AFGEBEELD.
- PEGAR LOS ADHESIVOS TAL COMO MUESTRA EL DIBUJO.
- APLICAR OS ADESIVOS COMO ILUSTRADO.
- SÄTT FAST DEKALERNA SOM BILDERNA VISAR.
- KIINNITÄ TARRAT KUVAN MUKAISESTI.
- ΤΟΠΟΘΕΤΗΣΤΕ ΤΑ ΑΥΤΟΚΟΛΛΗΤΑ ΟΠΩΣ ΑΠΕΙΚΟΝΙΖΕΤΑΙ.

- HELPFUL HINT: APPLY LABELS BEFORE ASSEMBLY.
- ATTENTION ! COLLER LES AUTOCOLLANTS AVANT D'ASSEMBLER LE JOUET.
- HINWEIS: DIE AUFKLEBER VOR DEM ZUSAMMENBAU ANBRINGEN:
- SUGGERIMENTO: APLICAZIONE GLI ADESIVI PRIMA DEL MONTAGGIO.
- TIP: PLAK DE STICKERS OP VÓÓR HET IN ELKAAR ZETTEN.

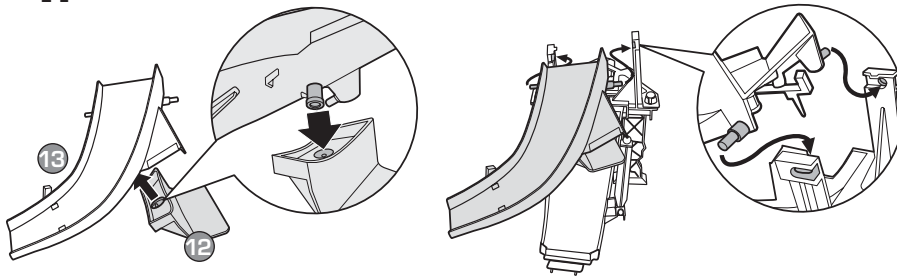
- ATENCIÓN: RECOMENDAMOS PEGAR LOS ADHESIVOS ANTES DE MONTAR EL JUGUETE.
- SUGESTÃO: APLICAR OS AUTOCOLANTES ANTES DE PROCEDER À MONTAGEM.
- TIPS: SÄTT FAST DEKALERNA INNAN DU MONTERAR.
- VINKKI: KIINNITÄ TARRAT ENNEN KOKOAMISTA.
- Χρήσιμη Συμβουλή: Τοποθετήστε τα αυτοκόλλητα πριν τη συναρμολόγηση.



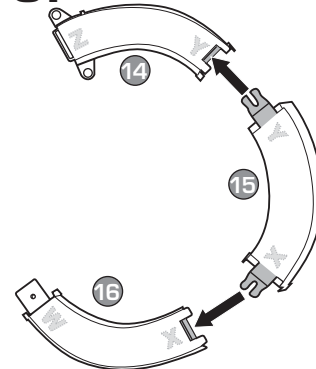
3.



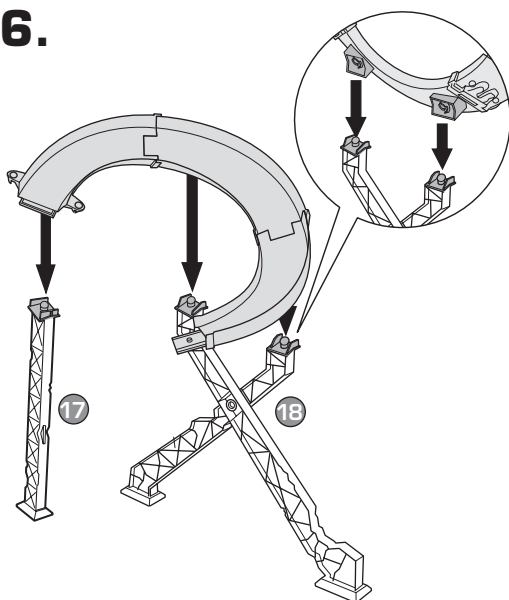
4.



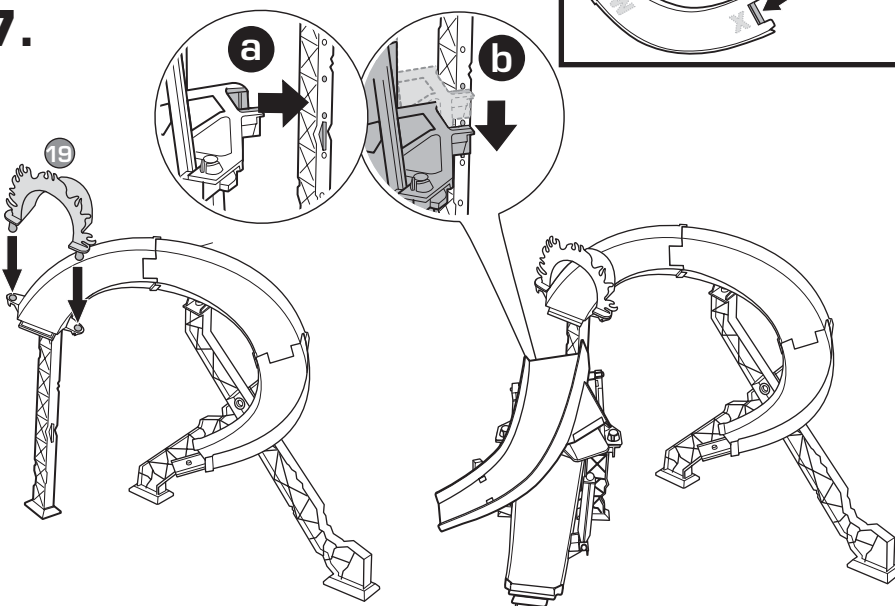
5.



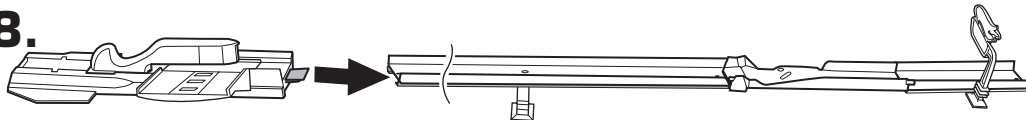
6.



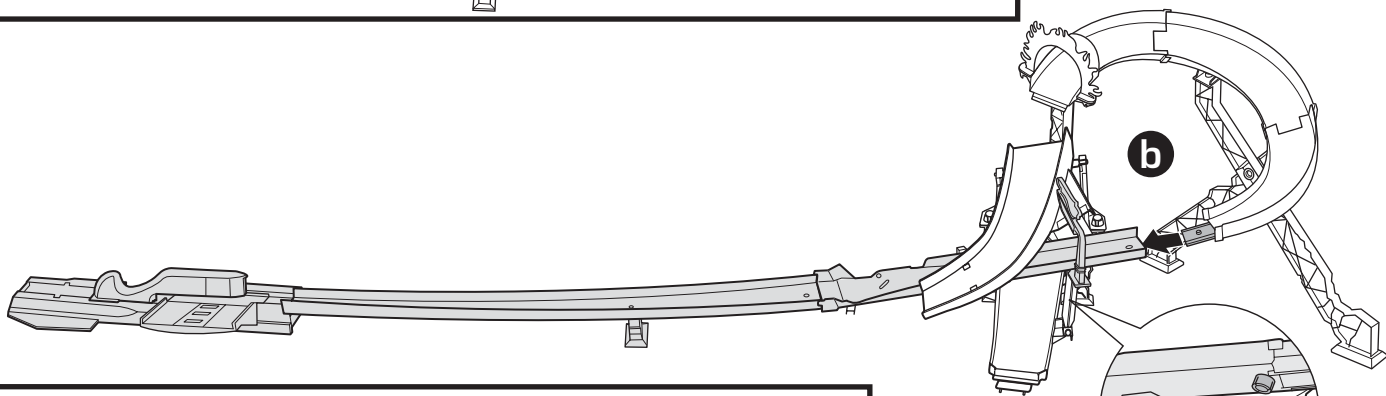
7.



8.

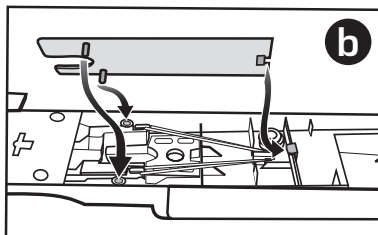
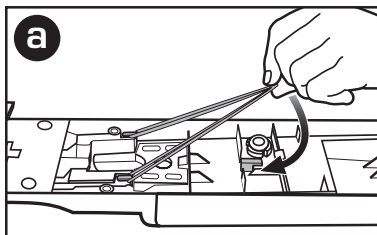


9.

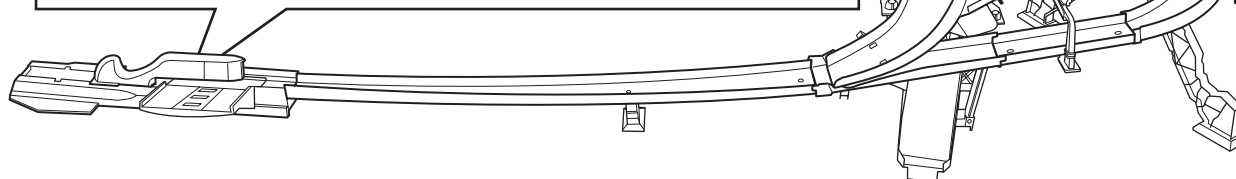


- REPLACE RUBBER BAND
- REMETS L'ÉLASTIQUE
- DAS GUMMIBAND ERSETZEN
- SOSTITUISCI L'ELASTICO
- VERVANGING VAN HET ELASTIEK

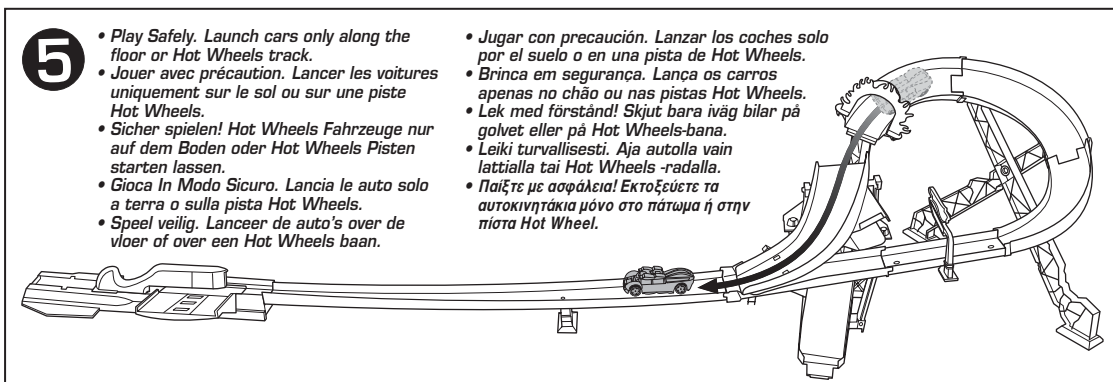
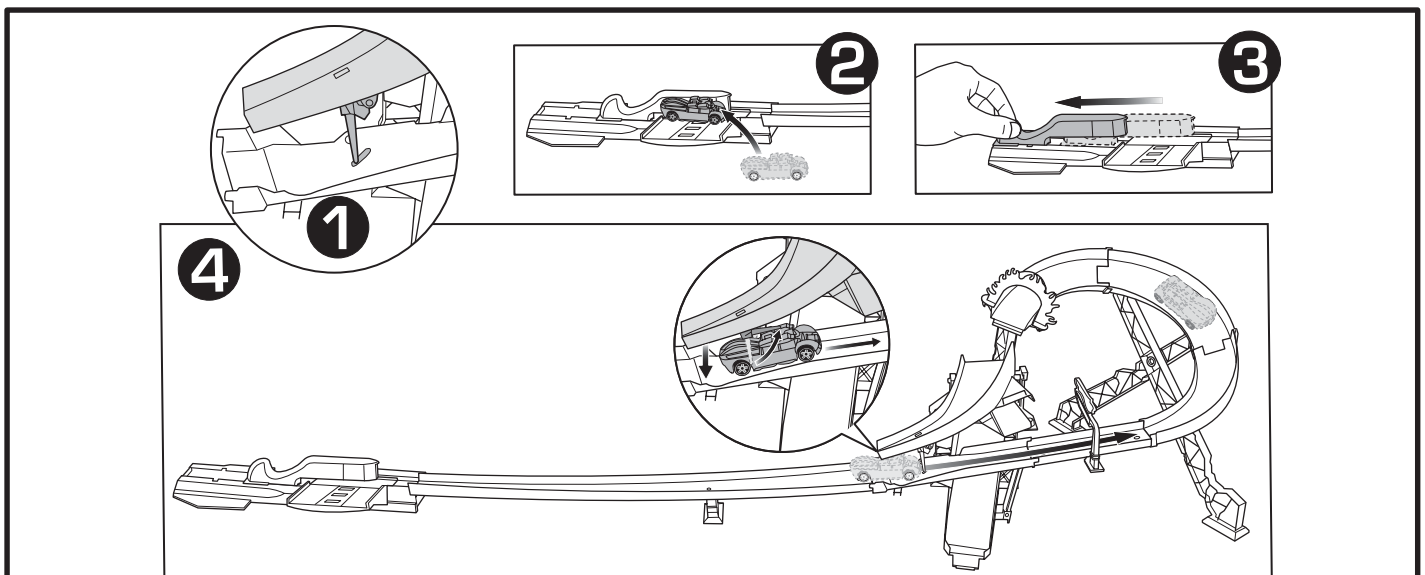
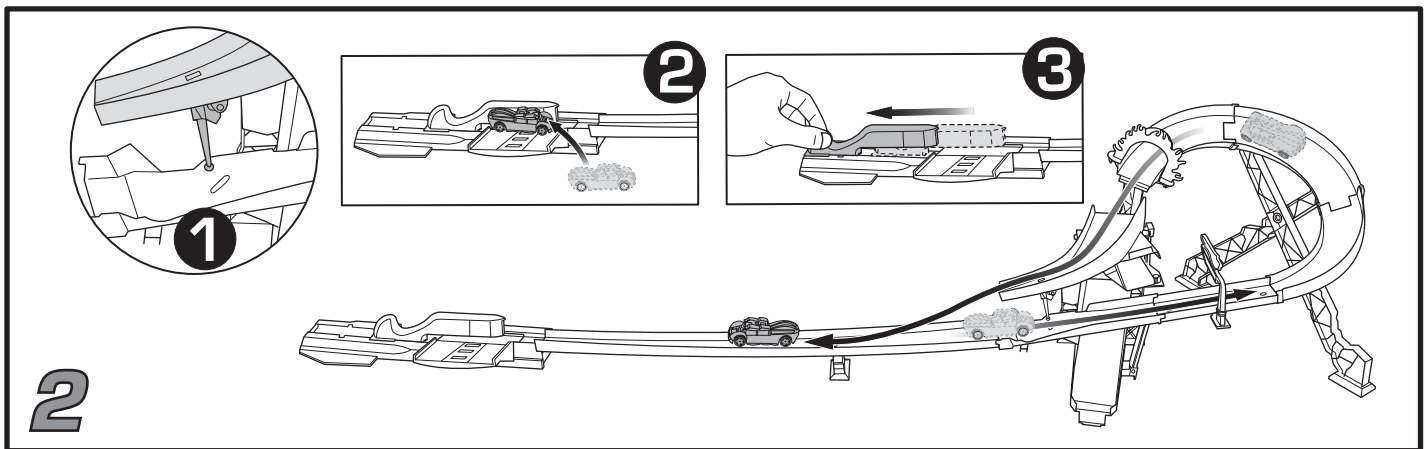
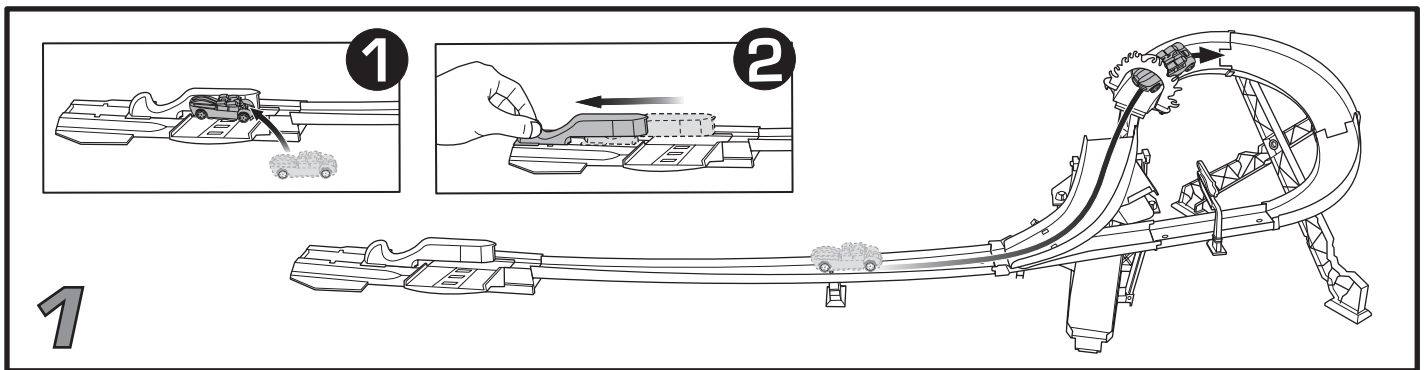
- SUSTITUCIÓN DE LA GOMA ELÁSTICA
- SUBSTITUI O ELÁSTICO
- SÄTT TILLBAKA GUMMIBANDET
- VIRITÄ KUMINAUHA PAIKALLEEN
- ANTIKATAΣΤΑΣΗ ΛΑΣΤΙΧΟΥ



- FINAL ASSEMBLY
- ASSEMBLAGE FINAL
- ENDGÜLTIGER ZUSAMMENBAU
- MONTAGGIO FINALE
- UITEINDELIJKE MONTAGE
- ENSEMBLE FINAL
- MONTAGEM FINAL
- SLUTMONTERING
- LELU VALMIINA
- ΤΕΛΙΚΗ ΣΥΝΑΡΜΟΛΟΓΗΣΗ



TO PLAY • POUR JOUER • SPIELEN • GIOCIAMO • ZO SPEEL JE • ¡A JUGAR!
 PARA BRINCAR • SÅ HÄR ANVÄNDS LEKSAKEN • LEIKI NÄIN • ΠΩΣ ΝΑ ΠΑΙΞΕΤΕ

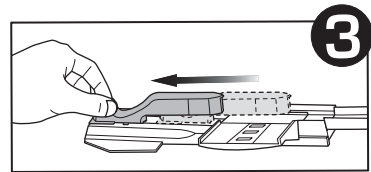
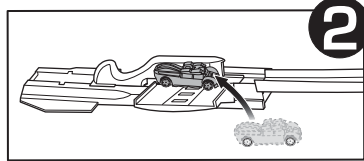


5

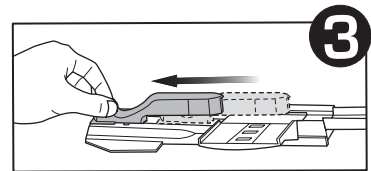
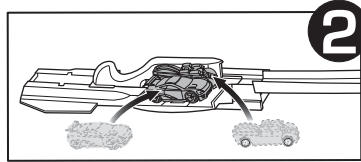
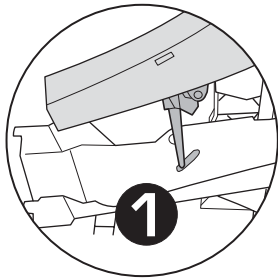
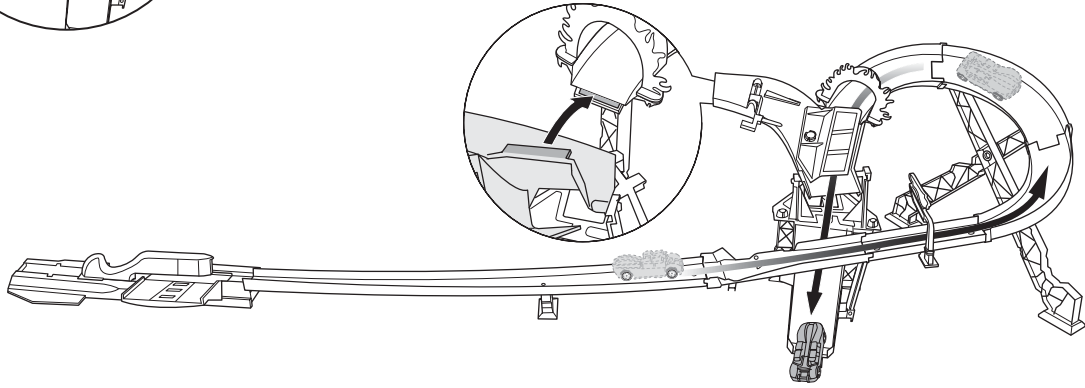
- Play Safely. Launch cars only along the floor or Hot Wheels track.
- Jouer avec précaution. Lancer les voitures uniquement sur le sol ou sur une piste Hot Wheels.
- Sicher spielen! Hot Wheels Fahrzeuge nur auf dem Boden oder Hot Wheels Pisten starten lassen.
- Gioca In Modo Sicuro. Lancia le auto solo a terra o sulla pista Hot Wheels.
- Speel veilig. Lanceer de auto's over de vloer of over een Hot Wheels baan.

- Jugar con precaución. Lanzar los coches solo por el suelo o en una pista de Hot Wheels.
- Brinca em segurança. Lança os carros apenas no chão ou nas pistas Hot Wheels.
- Lek med förstånd! Skjut bara iväg bilar på golvet eller på Hot Wheels-bana.
- Leiki turvalisesti. Aja autolla vain lattialla tai Hot Wheels -radalla.
- Παιξτε με ασφάλεια! Εκτοξεύετε τα αυτοκινητάκια μόνο στο πάτωμα ή στην πίστα Hot Wheel.

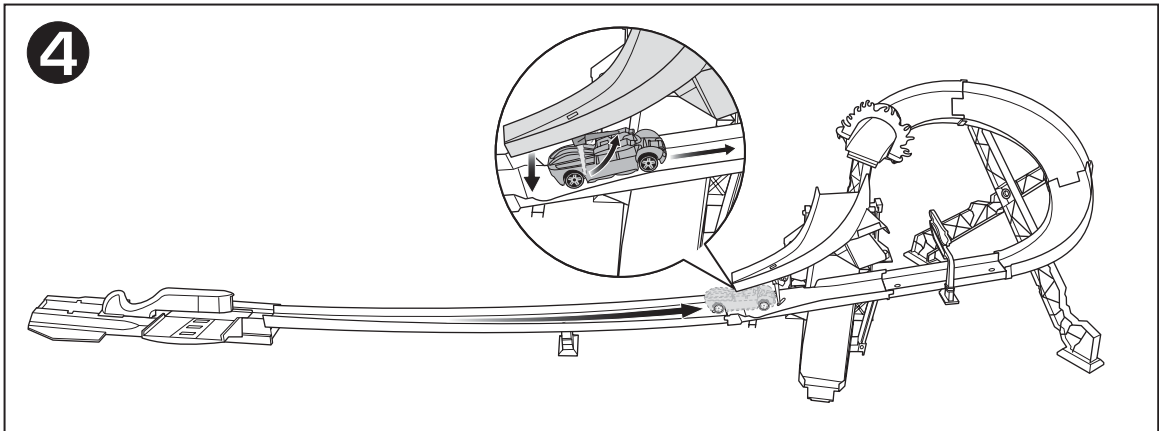
3



4



4



5

5

