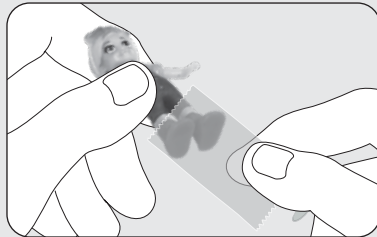
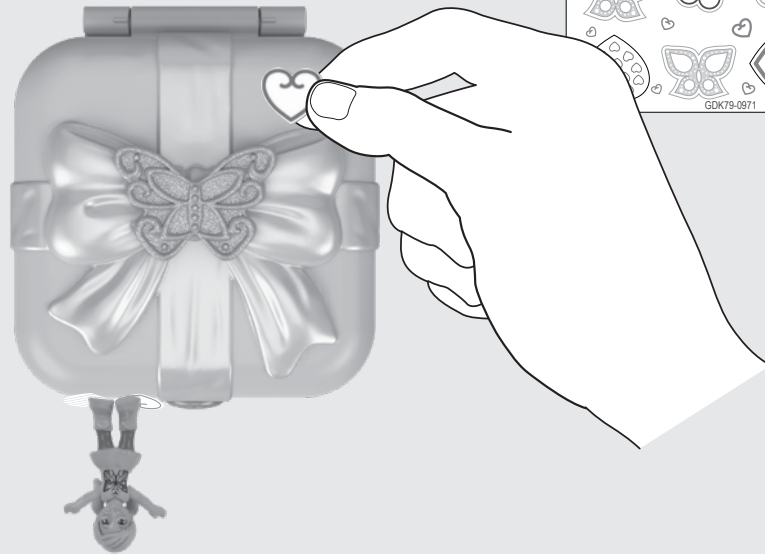
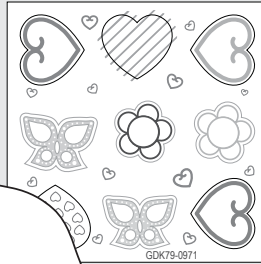




TIPS

Stickers can go anywhere on the playset to create POLLY STICK™ surfaces!
Works only with POLLY STICK™ dolls.
To ensure doll sticks to Polly Stick™ surfaces, press doll's feet firmly onto surface for best performance.

IMPORTANT: Remove dolls from POLLY STICK™ surfaces directly after play.



CLEANING

Dust, dirt, and other debris can cause dolls to lose their adhesiveness. Keep the dolls clean by using tape (not included) to remove any excess debris. If tape does not remove excess debris, clean dolls with water and let air dry. Avoid using cloth or paper towels to dry as this can cause lint to collect on dolls.

CONSUMER INFORMATION

Need Assistance? Visit service.mattel.com or call 1-800-524-8697 (US and Canada only).

SERVICE.MATTEL.COM

China. Tel.: (852) 3185-6500. Diimport & Diedarkan Oleh: Mattel Southeast Asia Pte. Ltd., No 19-1, Tower 3 Avenue 7, Bangsar South City, No 8, Jalan Kerinchi, 59200 Kuala Lumpur, Malaysia. Tel: 03-33419052.



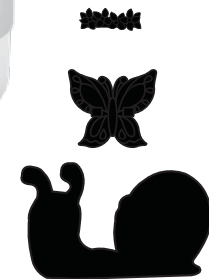
INSTRUCTIONS

4+



Asst. GDK76
GDK79-0970

CONTENTS

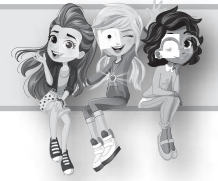


WARNING:
CHOKING HAZARD - Small parts.
Not for children under 3 years.

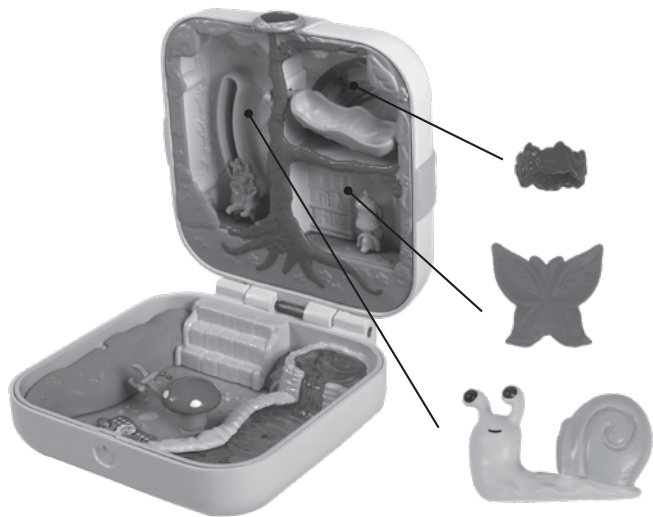
Please keep these instructions for future reference as they contain important information.



LET'S PLAY!

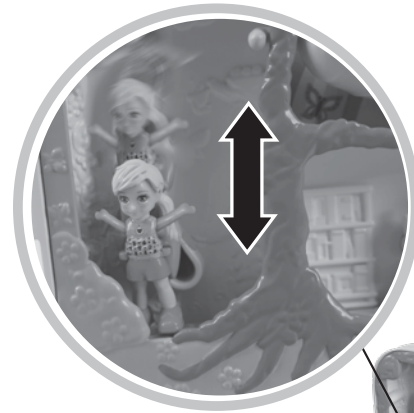


Peel to reveal surprises.



2

2 Rear



**Swing
for
fun.**



3

3 Cover