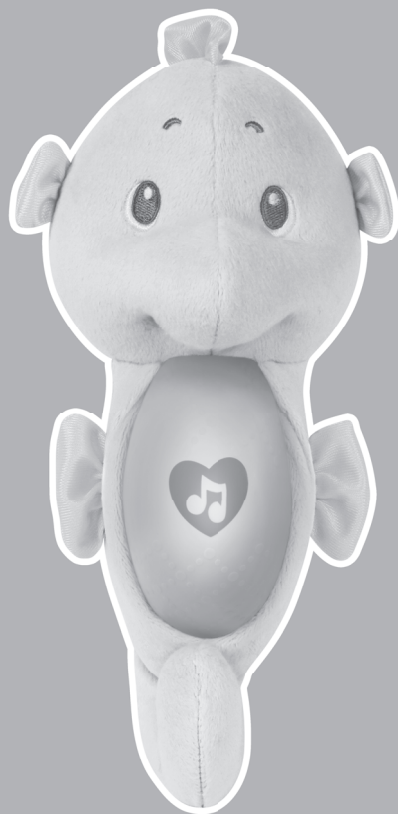


Fisher-Price®



Keep this instruction sheet for future reference, as it contains important information.

Requires four AA (LR6) **alkaline** batteries (included).

This toy is shipped with the power turned off. Open the fasteners on the back of the toy to access the power/volume switch and turn power on.

Tool required to replace batteries: Phillips screwdriver (not included).

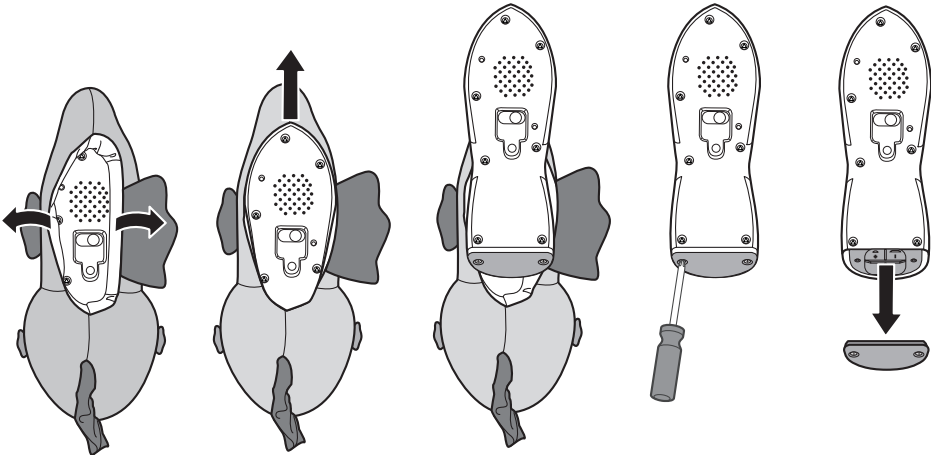
Only adults should install batteries.

GGD49
GGD50

REPLACE BATTERIES



For longer life, use **alkaline** batteries.



- When light or sound becomes faint or stops, it's time for an adult to change the batteries.
- Open the fasteners on the back of the toy.
- Pull the electronics unit out of the toy to access the battery compartment.
- Loosen the screws in the battery compartment door and remove the door. Remove the exhausted batteries and dispose properly.
- Insert four, new AA (LR6) **alkaline** batteries.
- Replace the battery compartment door and tighten the screws. Do not over-tighten.
- Replace the electronics unit back inside the toy. **Make sure the switches face you.** Then close the fasteners.

FISHER-PRICE® SMART CONNECT™

- Some features of this product only work with the Fisher-Price® Smart Connect™ app.
- Download the Fisher-Price® Smart Connect™ app to control the seahorse from your smart device (not included).
- After downloading, launch the app and be sure to follow the app instructions to connect your device to the seahorse.
- The Fisher-Price® Smart Connect™ app is compatible with most iOS and Android™ devices. Visit [fisher-price.com/SmartConnect/](https://www.fisher-price.com/SmartConnect/) for a list of compatible devices.

CARE

- The seahorse is machine washable without the electronics unit. Do not immerse the electronics unit.
- Open the fasteners on the back of the toy and remove the electronics unit.
- Machine wash the seahorse in cold water on the gentle cycle. Do not use bleach. Tumble dry on low heat.
- Replace the electronics unit back inside the toy. Make sure the switches face you. Then close the fasteners.



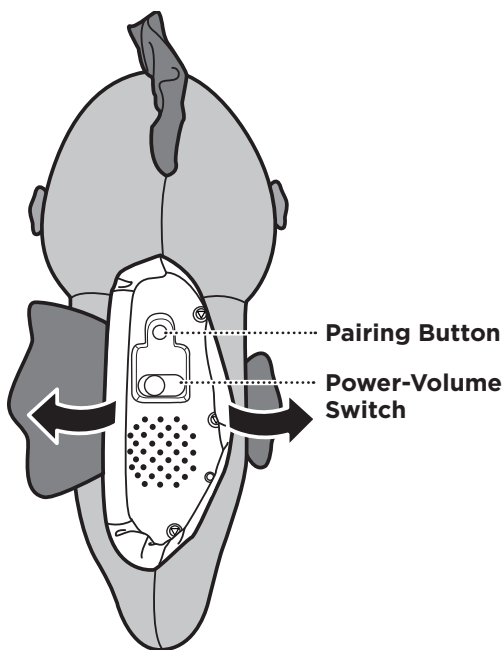
Protect the environment by not disposing of this product or any batteries with household waste. This symbol indicates that this product shall not be treated as household waste. Check your local authority for recycling advice and facilities.

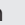
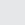
PAIRING YOUR DEVICE WITH THE SEAHORSE



Before using the Fisher-Price® Smart Connect™ app for the first time, pair your device (not included) with the seahorse.


Make sure your device is within 6 feet (1,8 m) of the seahorse when pairing.



- Open the fasteners on the back of the seahorse to access the pairing button and the power-volume switch.
- Slide the power-volume switch to ON with low volume  or ON with high volume .
- Open the Fisher-Price® Smart Connect™ app on your device.
- Press the pairing button on the seahorse. Pairing may take up to 30 seconds and you'll see that you're connected in the app!
- Once you've paired your device to the seahorse, you do not need to pair again.
- If you cannot pair your device to the seahorse, try moving the device closer to the seahorse and make sure your wireless connection is enabled on your device.

SOOTHING MUSIC AND GLOWING LIGHTS!



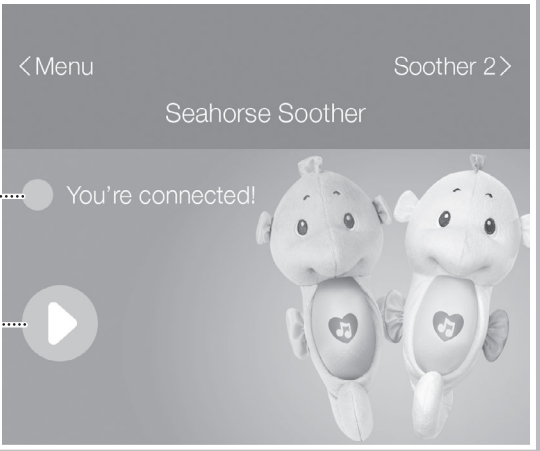
- Squeeze seahorse's tummy to start 10 minutes of sweet, soothing lullabies along with a soft glow.
- Press and hold seahorse's tummy for about three seconds to turn off music and light. Or, open the fasteners on the back of this toy to access the power-volume switch and slide it OFF .
- If this toy begins to operate erratically you may need to reset the electronics. Slide the power-volume switch off and then back on.

FISHER-PRICE® SMART CONNECT™ APP

- This toy has more features when using with the Fisher-Price® Smart Connect™ app. The app is available on the App Store® and Google Play™.
- Be sure seahorse power is on to use the app. Now you can turn seahorse on and off with your device, make music and sounds selections, control volume and light brightness and even choose light colors and set a timer.

Touch to connect or disconnect your device.
The seahorse enters sleep mode after 25 hours of non-use. When this happens, you'll have to press seahorse's tummy.....

Touch to pause or resume lights, sounds and music.



FISHER-PRICE® SMART CONNECT™ APP



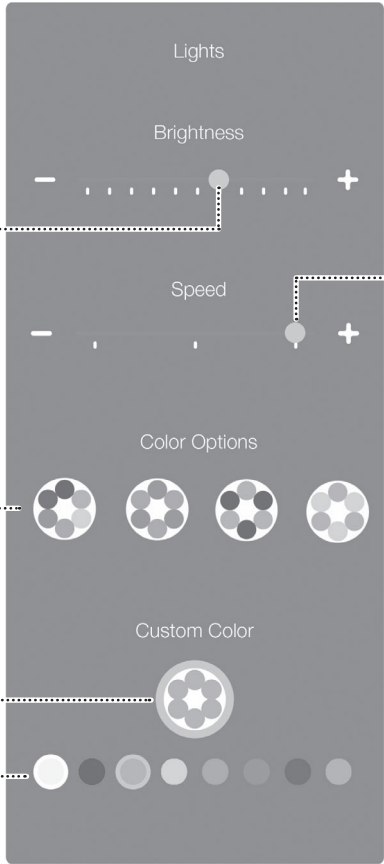
Touch to make a music selection. Choose ambient, classical, lullabies or create a custom playlist.

Touch to advance to the next song or go back to a song.

Touch to make a sound selection. Choose waves, rain, sea forest, brown noise, pink noise or fan noise. Touch again to turn sound off.

Slide to adjust the volume level.

FISHER-PRICE® SMART CONNECT™ APP



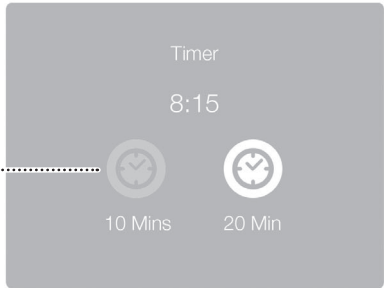
Slide to adjust light brightness.

Slide to change how fast or slow light color changes.

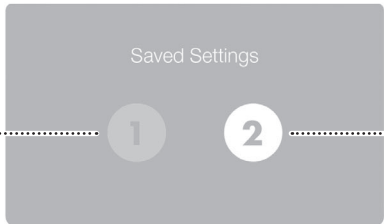
Touch to make a color combination selection.

Touch to create a custom color light display.

Choose up to three colors. Touch your choices.



Touch to choose how long selections play.



Touch to save all of your selections and create a custom setting. You can save up to two custom settings. To start a setting, touch a number icon.

Hint: To change a custom setting, touch and hold a number icon until it flashes. Then make selections and touch the same number icon again to save.

BATTERY SAFETY INFORMATION

In exceptional circumstances, batteries may leak fluids that can cause a chemical burn injury or ruin your product. To avoid battery leakage:

- Do not mix old and new batteries or batteries of different types: alkaline, standard (carbon-zinc) or rechargeable.
- Insert batteries as indicated inside the battery compartment (+ and -).
- Remove batteries during long periods of non-use. Always remove exhausted batteries from the product. Dispose of batteries safely. Do not dispose of this product in a fire. The batteries inside may explode or leak.
- Never short-circuit the battery terminals.
- Use only batteries of the same or equivalent type, as recommended.
- Do not charge non-rechargeable batteries.
- Remove rechargeable batteries from the product before charging.
- If removable, rechargeable batteries are used, they are only to be charged under adult supervision.

CONSUMER INFORMATION

FCC STATEMENT (UNITED STATES ONLY)

This equipment has been tested and found to comply with the limits for a Class B digital device, pursuant to Part 15 of the FCC rules. These limits are designed to provide reasonable protection against harmful interference in a residential installation. This equipment generates uses and can radiate radio frequency energy and, if not installed and used in accordance with the instructions, may cause harmful interference to radio communications. However, there is no guarantee that interference will not occur in a particular installation. If this equipment does cause harmful interference to radio or television reception, which can be determined by turning the equipment off and on, the user is encouraged to try to correct the interference by one or more of the following measures:

- Reorient or relocate the receiving antenna.
- Increase the separation between the equipment and receiver.
- Consult the dealer or an experienced radio/TV technician for help.

NOTE: Changes or modifications not expressly approved by the manufacturer responsible for compliance could void the user's authority to operate the equipment.

This device complies with Part 15 of the FCC Rules. Operation is subject to the following two conditions: (1) This device may not cause harmful interference, and (2) this device must accept any interference received, including interference that may cause undesired operation.

CAN ICES-3 (B)/NMB-3 (B)

Operation is subject to the following two conditions: (1) this device may not cause interference, and (2) this device must accept any interference, including interference that may cause undesired operation of the device.

L'utilisation de ce dispositif est autorisée seulement aux conditions suivantes : (1) il ne doit pas produire de brouillage et (2) il doit pouvoir tolérer tout brouillage radioélectrique reçu, même si ce brouillage est susceptible de compromettre son fonctionnement.



UNITED STATES: 1-800-432-5437.
Fisher-Price, Inc., 636 Girard Avenue,
East Aurora, NY 14052.

GREAT BRITAIN: Mattel UK Ltd, Vanwall
Business Park, Maidenhead SL6 4UB.
Helpline: 01628 500303;
www.service.mattel.com/uk.

Mattel Europa B.V., Gondel 1, 1186 MJ
Amstelveen, Nederland.

CANADA: 1-800-432-5437.
Mattel Canada Inc., 6155 Freemont Blvd.,
Mississauga, Ontario L5R 3W2.

AUSTRALIA: Mattel Australia Pty. Ltd.,
658 Church Street, Locked Bag #870,
Richmond, Victoria 3121 Australia.
Consumer Advisory Service 1300 135 312.

NEW ZEALAND: 16-18 William Pickering
Drive, Albany 1331, Auckland.

ASIA: Mattel East Asia Ltd., Room 503-09,
North Tower, World Finance Centre,
Harbour City, Tsimshatsui, HK, China.
Tel.: (852) 3185-6500.

MALAYSIA: Diimport & Diedarkan Oleh:
Mattel Southeast Asia Pte. Ltd., No
19-1, Tower 3 Avenue 7, Bangsar South
City, No 8, Jalan Kerinchi, 59200 Kuala
Lumpur, Malaysia. Tel: 03-33419052.

SOUTH AFRICA: Mattel South Africa
(PTY) LTD, Office 102 I3, 30 Melrose
Boulevard, Johannesburg 2196.



Apple and the Apple logo are trademarks of Apple Inc.,
registered in the U.S. and other countries. App Store is a service mark of Apple Inc.
Google and the Google Play logo are trademarks of Google, LLC

©2018 Mattel. * and ™ designate U.S. trademarks of Mattel, except as noted.

PRINTED IN CHINA

GGD49-0970
1102112200-DOM