

**MEGA
CONSTRUX**

HALO

HALO
INFINITE

GYG60



2 in 1*
EM / B



**PRO
BUILDERS**

*Instructions included for main model only. Other build(s) can be found at megaconstrux.com / Instructions incluses pour le modèle principal uniquement.
Les instructions pour l'(les) autre(s) modèle(s) de construction se trouvent sur le site megaconstrux.com



**Scan here for
instructions**

**Scanner ici pour
obtenir les instructions**

Escanee aquí para obtener instrucciones
Digitalize aqui para instruções
Hier scannen und Anleitung aufrufen
Просканируйте здесь для получения инструкций

megaconstrux.com

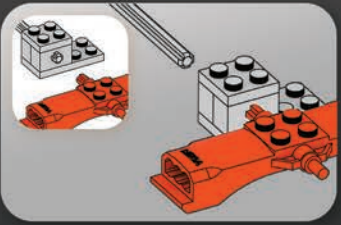
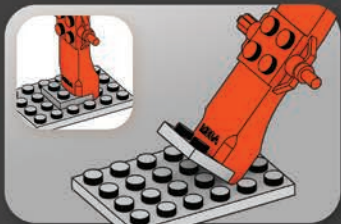
**Choose your Build
Choisissez votre construction**

Elige tu armado • Escolha sua montagem
Wähle dein Modell • Выбери свою конструкцию



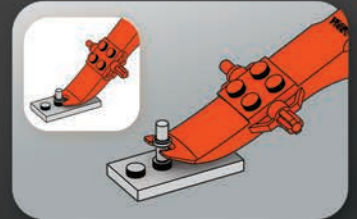
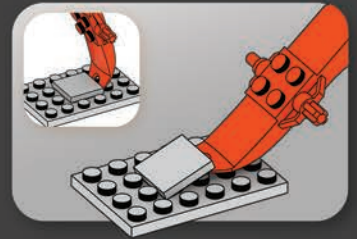
Most models can be built one at a time. / La plupart des modèles peuvent être construits un à la fois. / La mayoría de modelos se pueden construir de uno en uno. / A maioria dos modelos pode ser construída separadamente. / La maggior parte dei modelli possono essere realizzati uno per volta. / Die meisten Modelle können eines nach dem anderen gebaut werden. / Większości modeli nie da się budować jednocześnie z innymi. / De meeste modellen kunnen één voor één gebouwd worden. / Большинство моделей могут быть собраны по одной за раз. / De fleste modeller kan bygges enkeltvis. / De flesta modeller kan byggas en i taget. / De fleste modellene kan bygges en om gangen. / Useimmat mallit voidaan rakentaa yksi kerrallaan. / Τα περισσότερα μοντέλα μπορούν να κατασκευασθούν ένα ένα. / Modellerin çoğu ayrı ayrı inşa edilmeyi gerektirebilir. / Většinou lze najednou sestavit pouze jeden model. / Väčšina modelov môže byť zostavená iba raz. / A modellek többségéből egyszerre csak egy építhető. /ほとんどのモデルは、一度に一つを組み立てることができます。 / يمكن تركيب التصميم الواحد تلو الآخر.

大多數型號可一次性建構

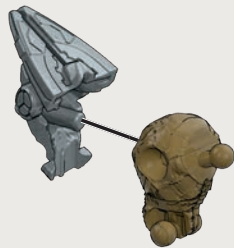


Building Tool Outil de construction

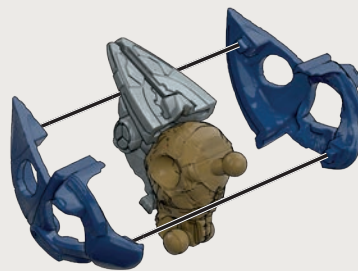
Herramienta de construcción
Bauwerkzeug
Ferramenta de montagem
Инструмент для конструирования



1



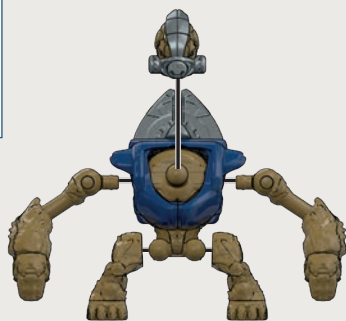
1



2



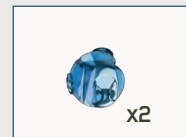
3



1

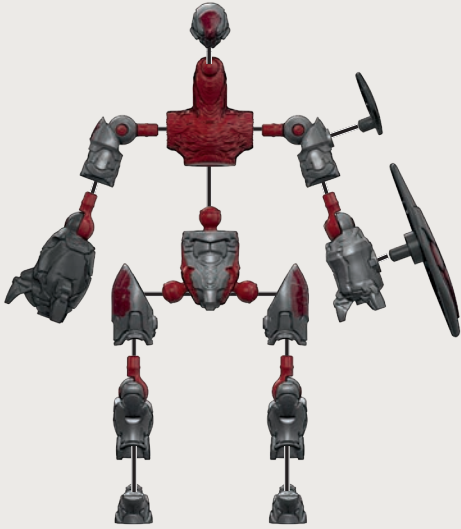


2



x2





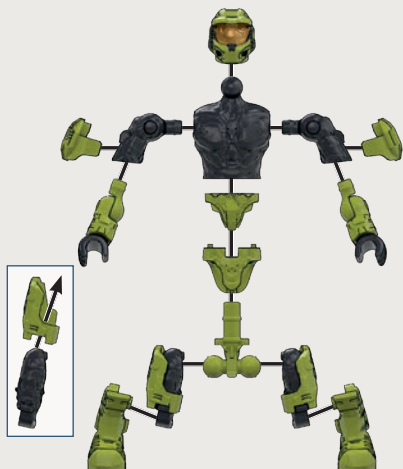
1



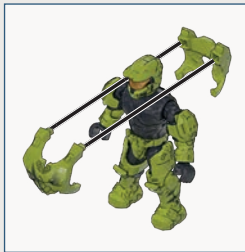
2



3



1



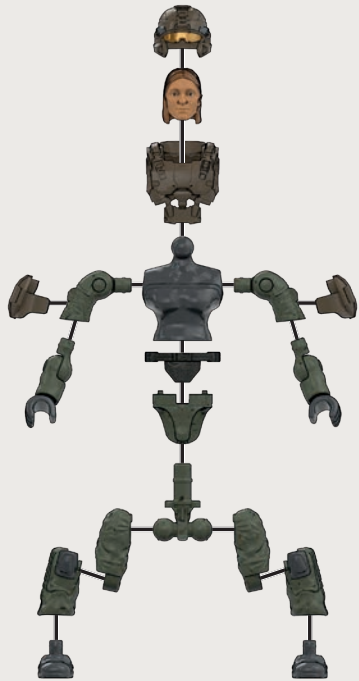
2



1



2



1



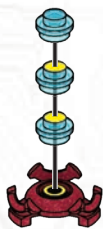
2



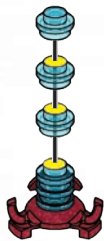
3

2

6X	1X	1X



1



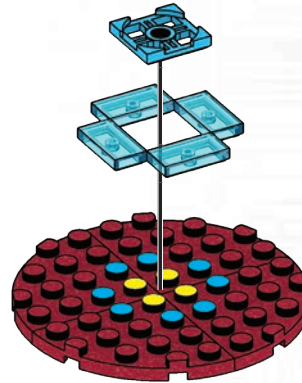
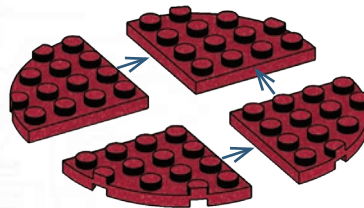
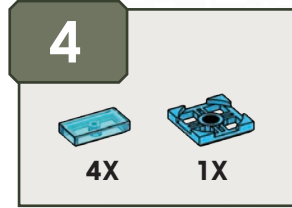
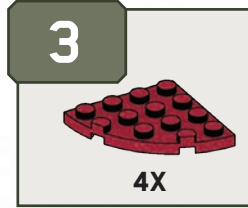
2



3



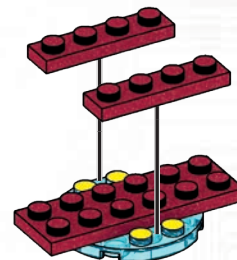
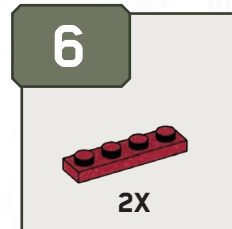
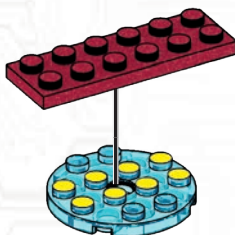
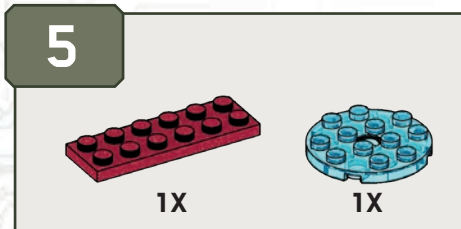
4



1



2

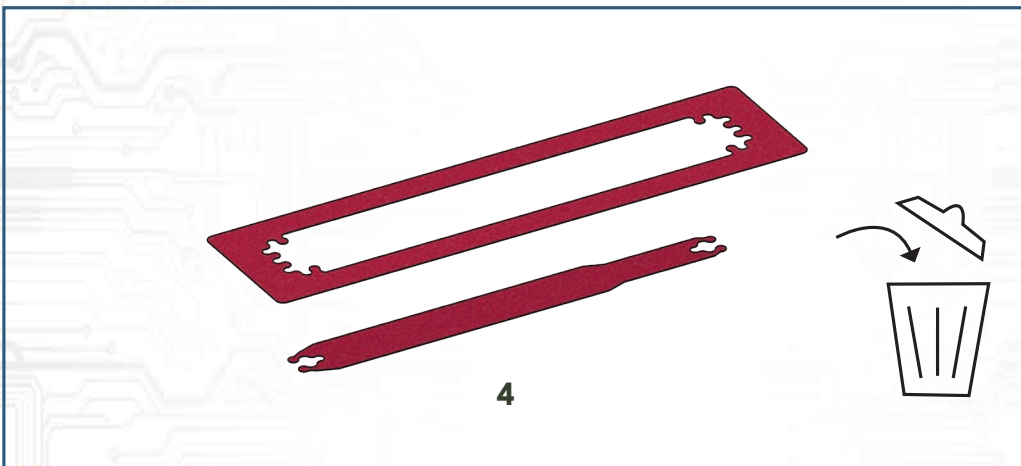
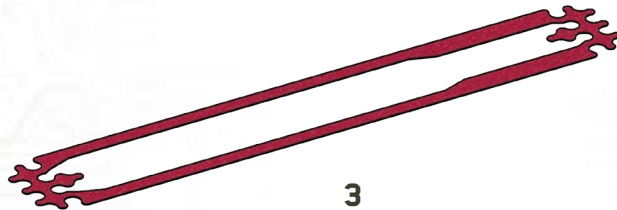
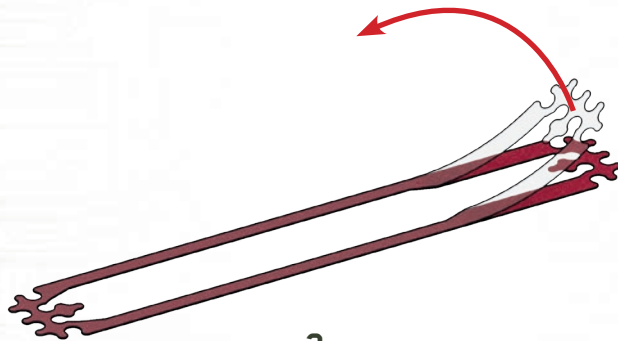
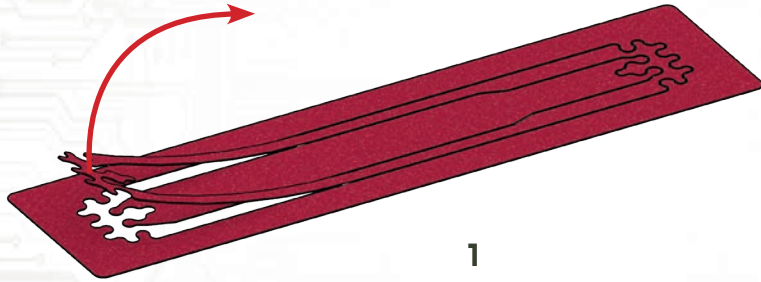
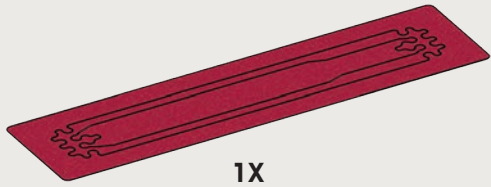


1



2

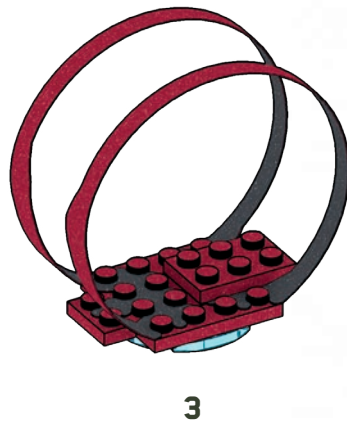
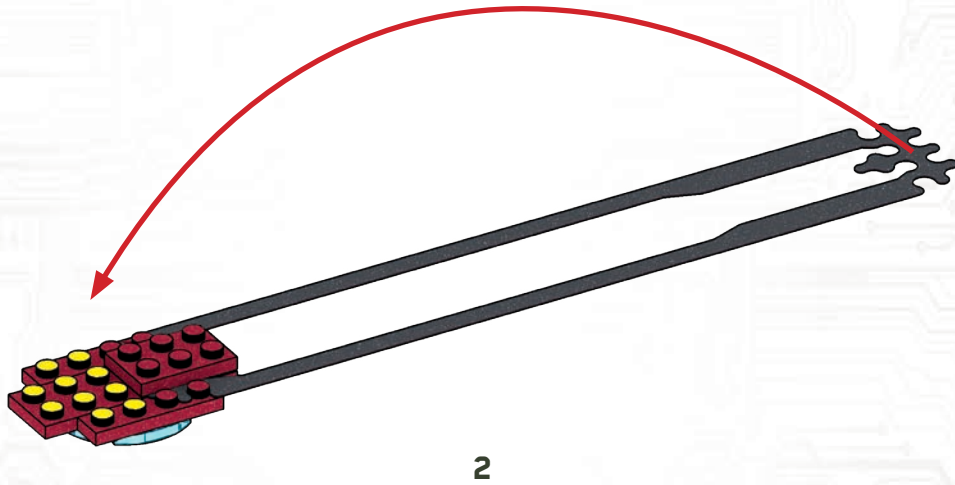
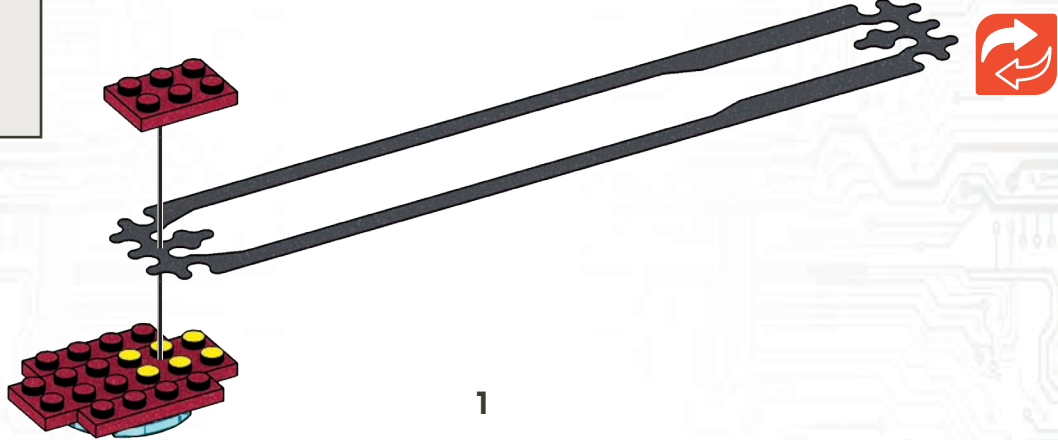
7



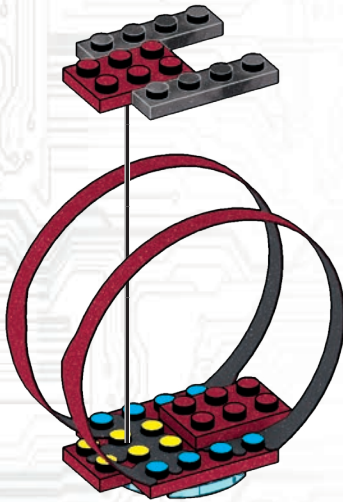
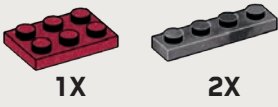
8



1X



9



10

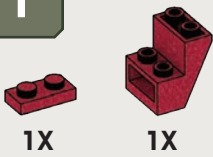


1



2

11



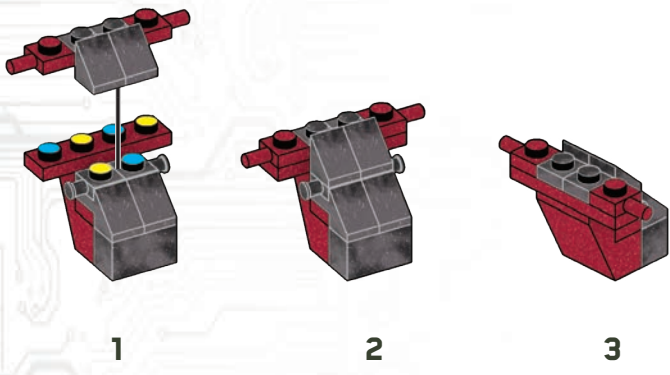
12



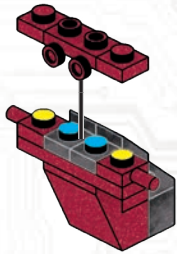
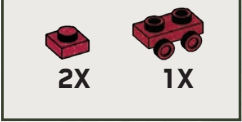
13



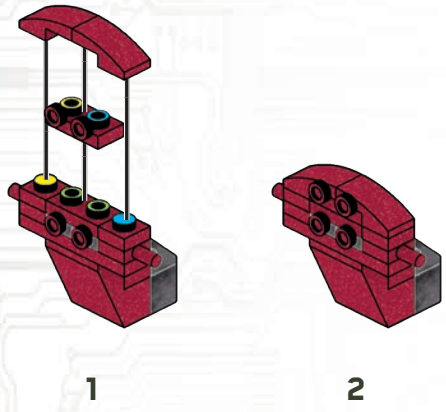
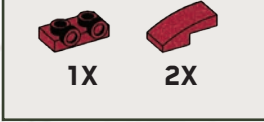
14



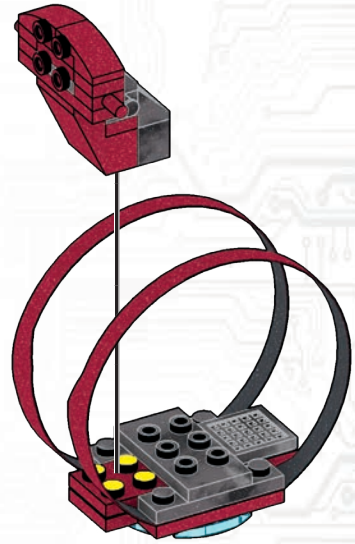
15



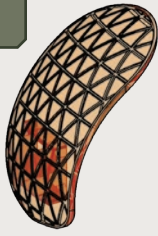
16



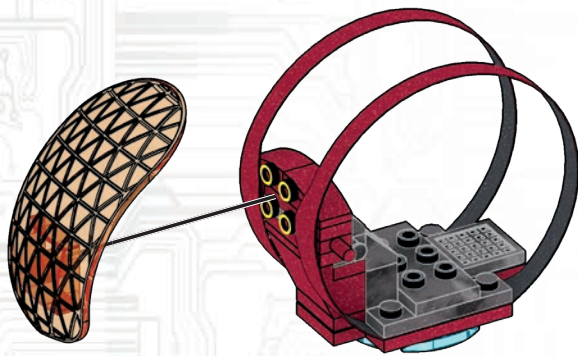
17



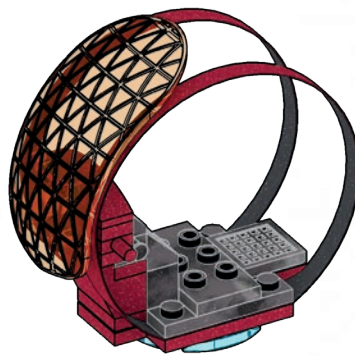
18



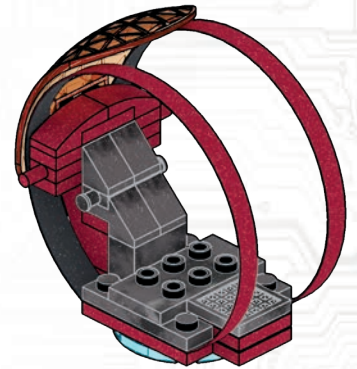
1X



1



2

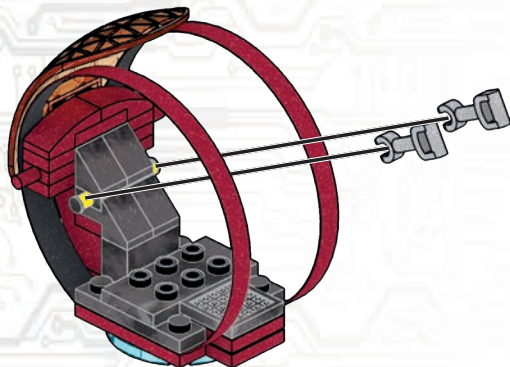


3

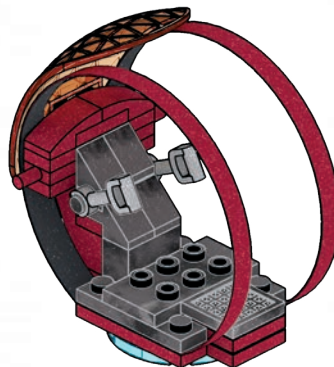
19



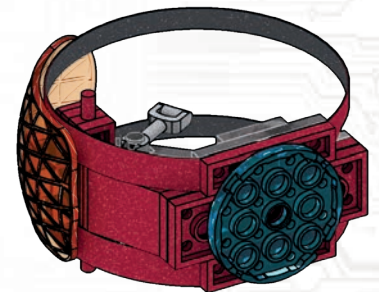
2X



1



2

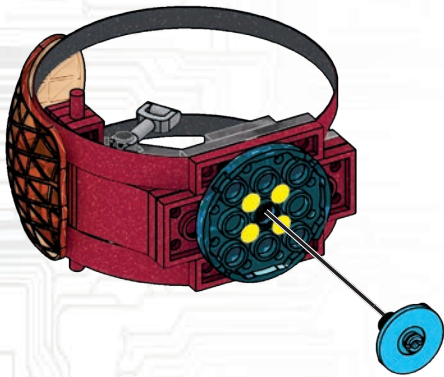


3

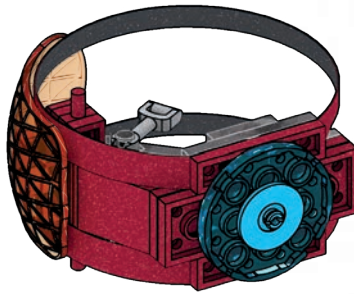
20



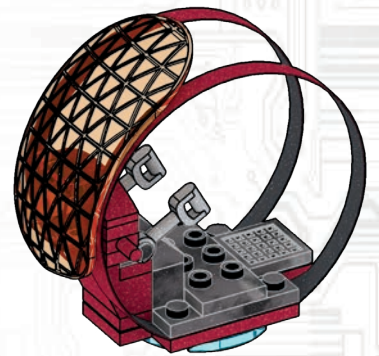
1X



1

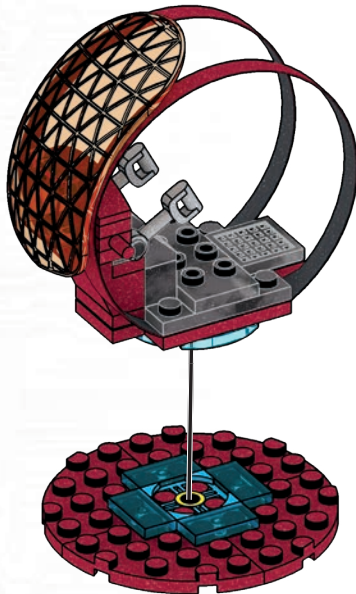


2

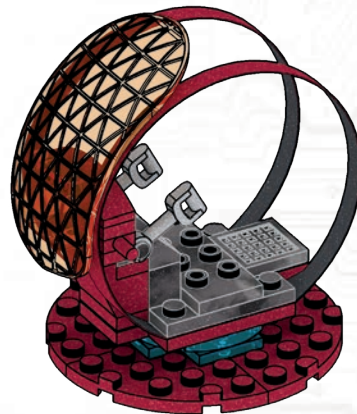


3

21



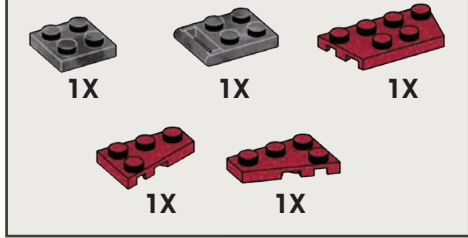
1



2

x2

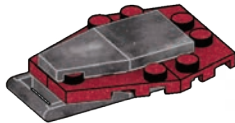
22



23



1

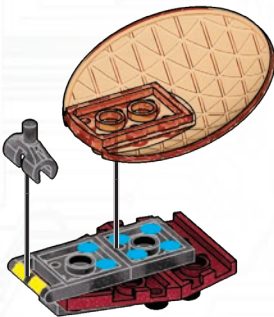
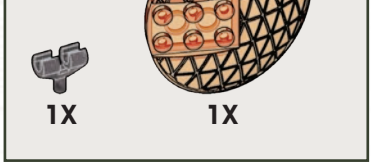


2

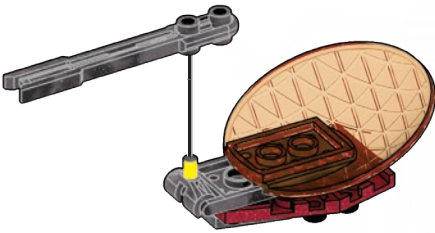
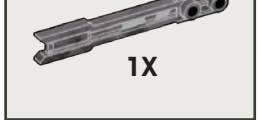


3

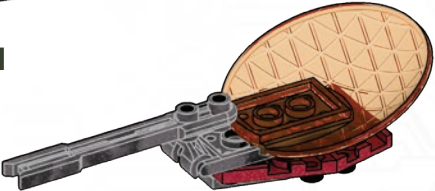
24



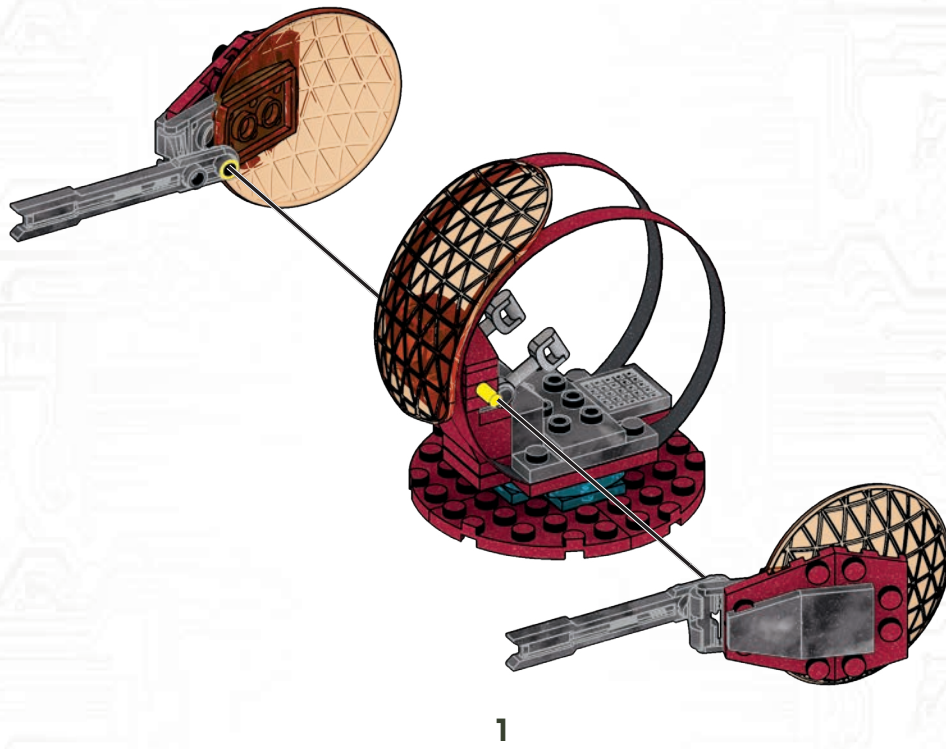
25



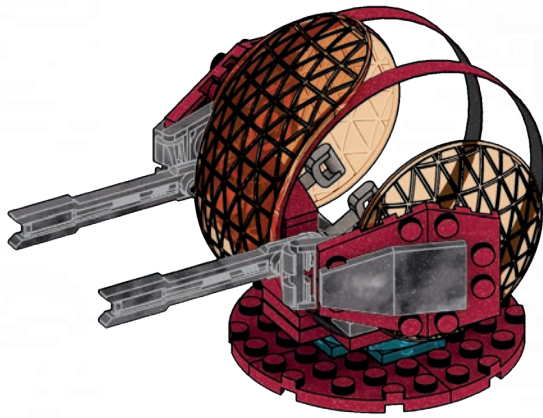
1



2



1



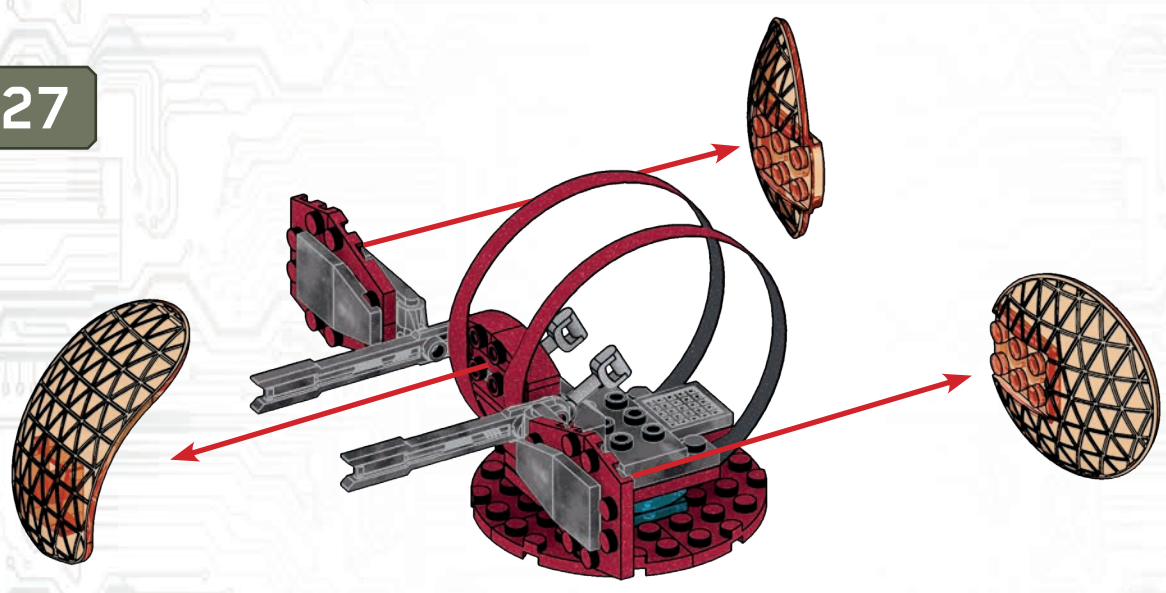
2

1

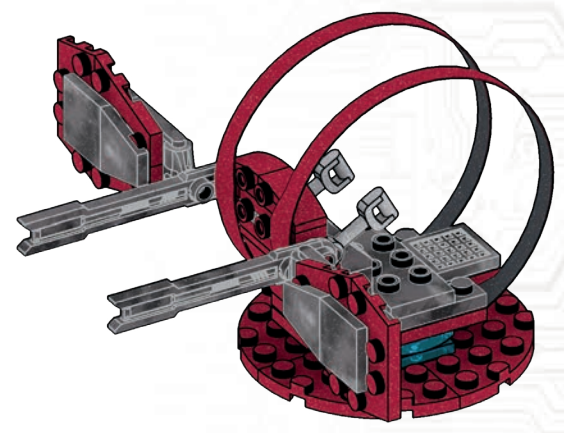
2

or / ou / o / oder / lub
of / или / ή / veya / و

27

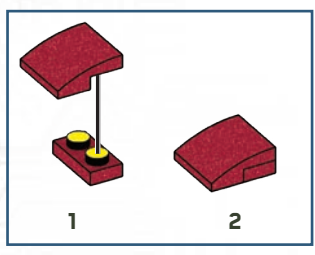
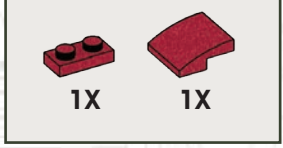


1



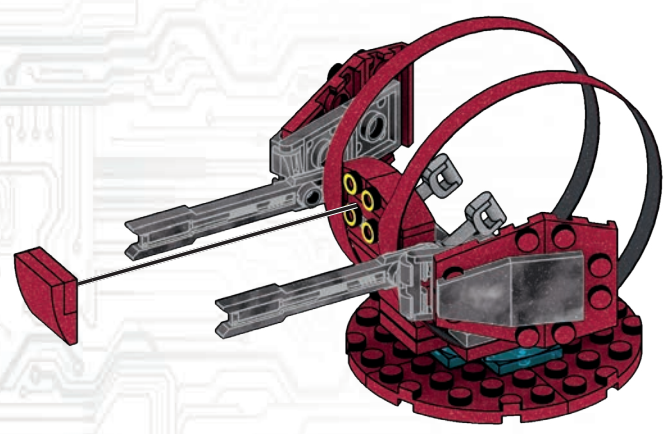
2

28

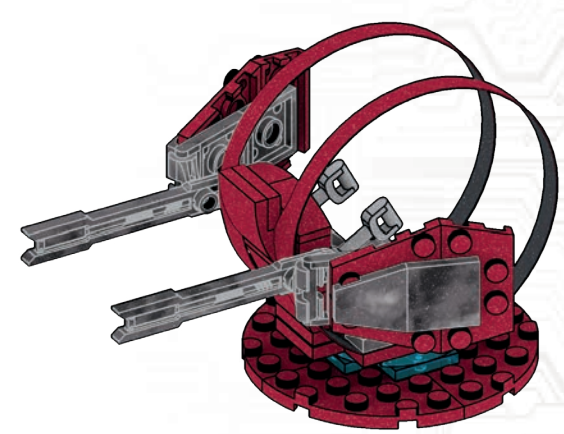


1

2



1



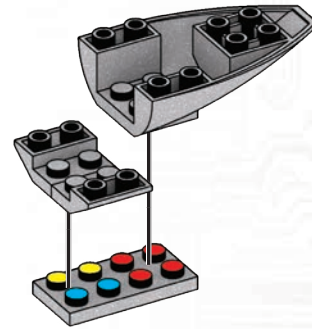
2



29

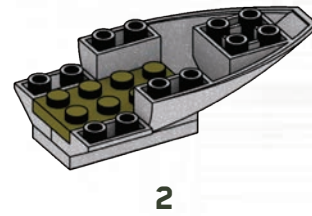
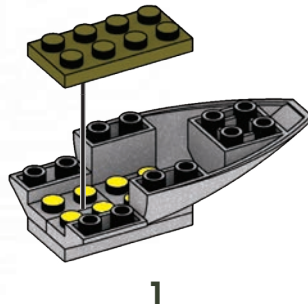
2X 1X

1X

Parts list for step 29: two 1x2 grey Technic pins, one 1x6 grey Technic pin, and one grey boat hull.

30

1X

Parts list for step 30: one 1x6 olive green Technic pin.

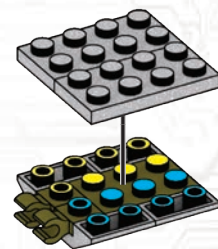
31

2X 4X 1X

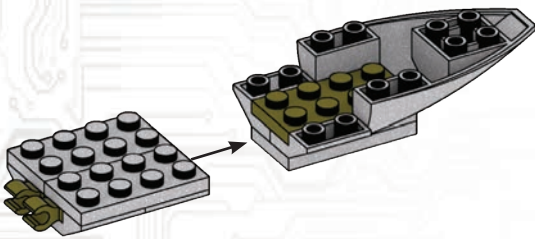
Parts list for step 31: two 1x2 olive green Technic pins, four 1x2 grey Technic pins, and one 1x6 olive green Technic pin.

32

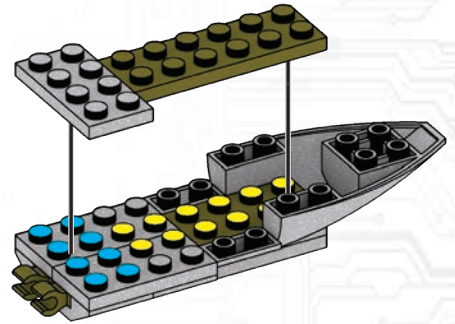
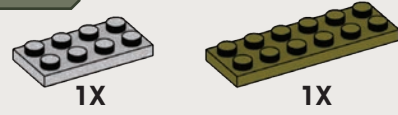
2X

Parts list for step 32: two 1x6 grey Technic pins.

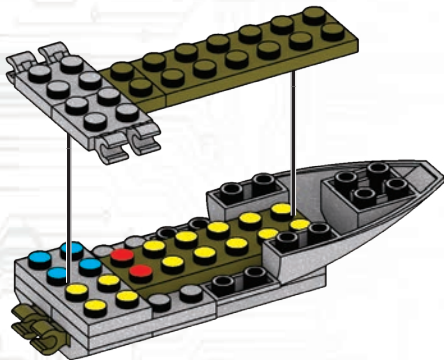
33



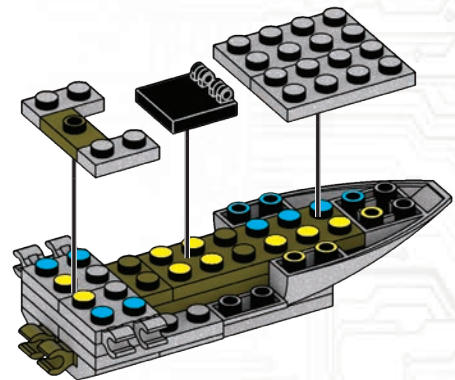
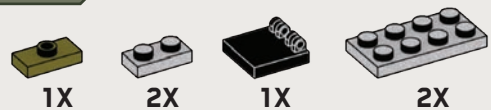
34



35



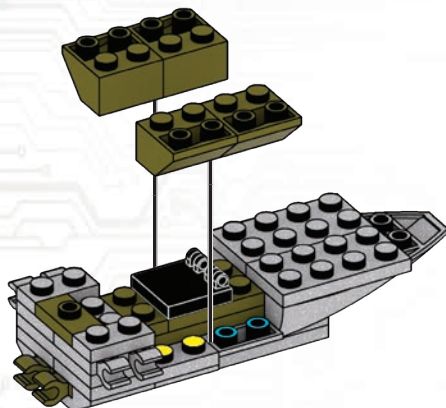
36



37



4X



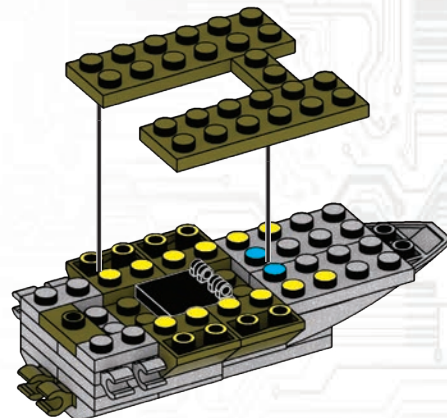
38



1X



2X



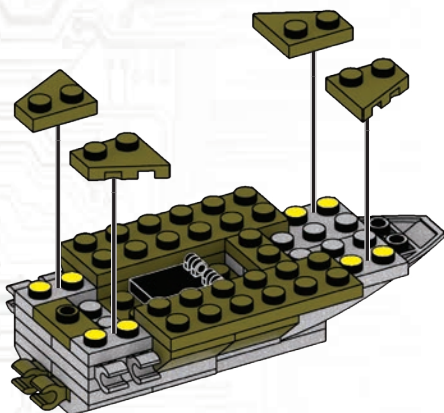
39



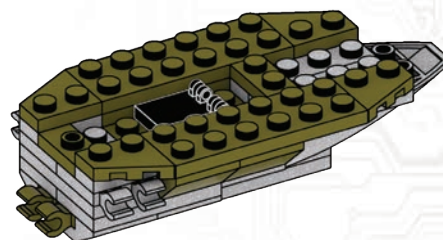
2X



2X

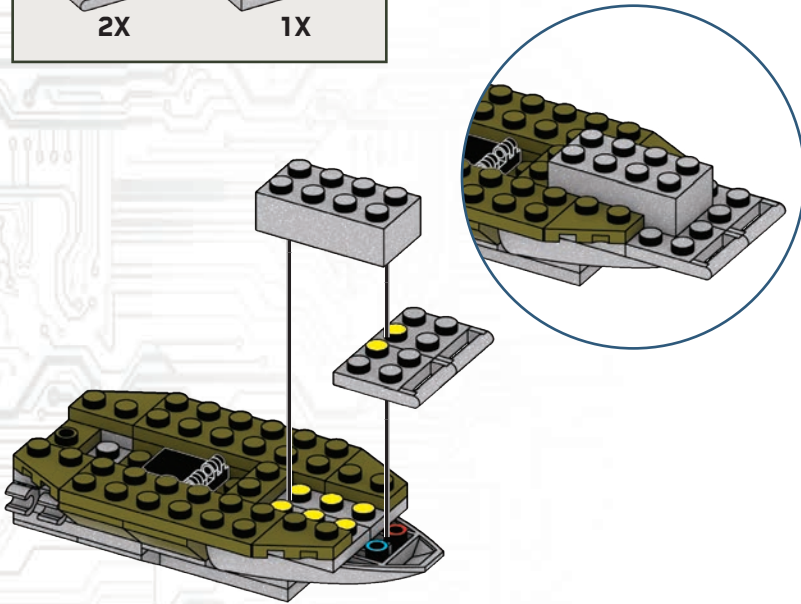
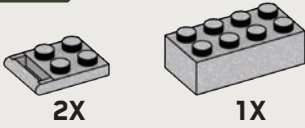


1

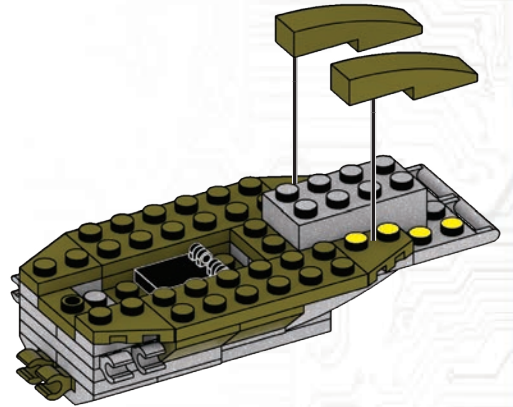
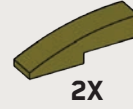


2

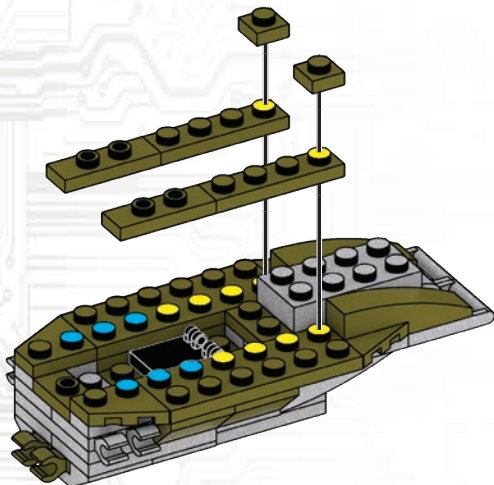
40



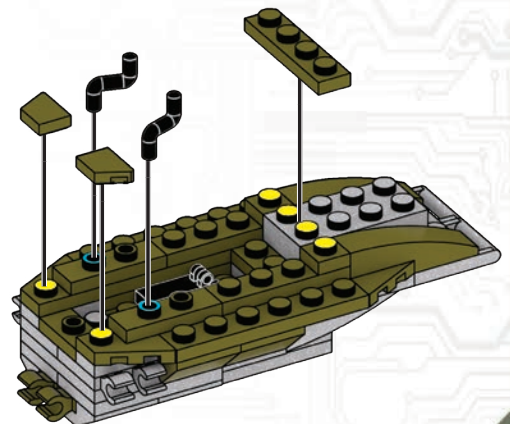
41



42



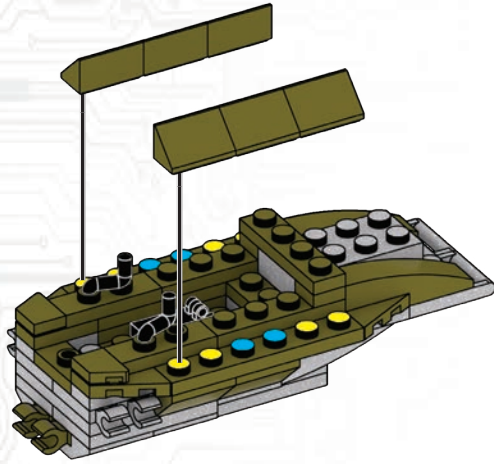
43



44



6X



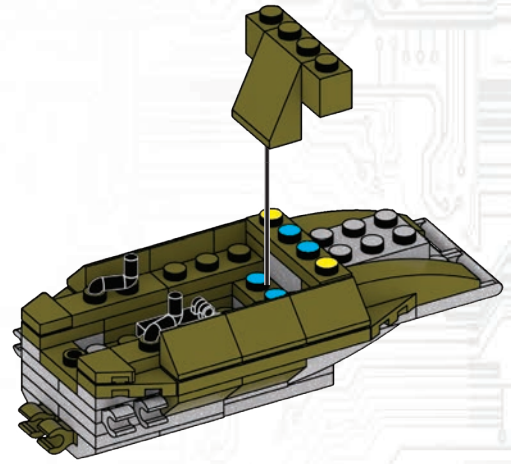
45



2X



1X



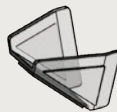
46



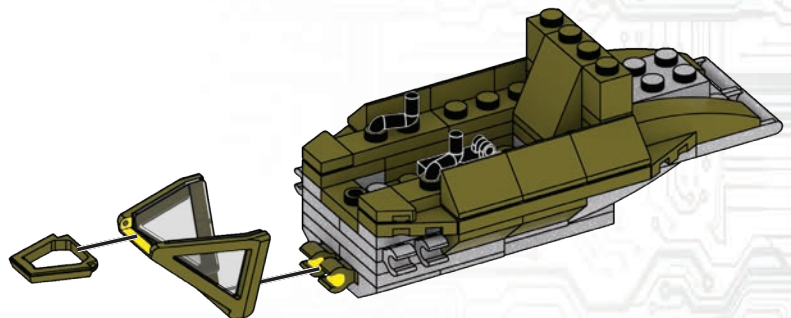
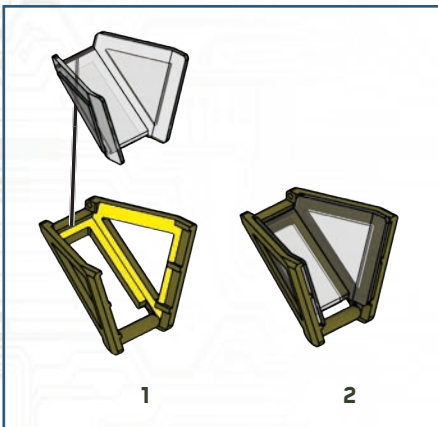
1X



1X



1X



47



1X



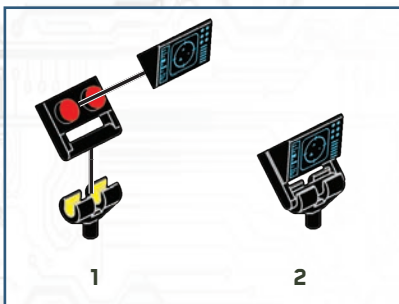
1X



1X

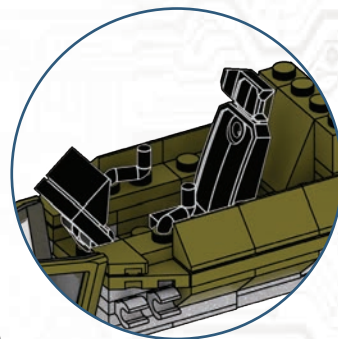
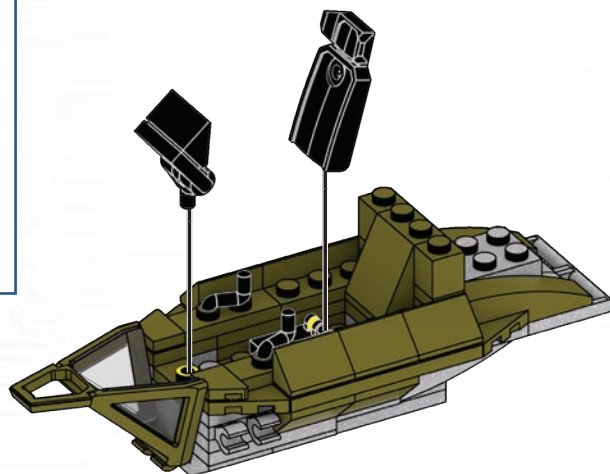


1X



1

2



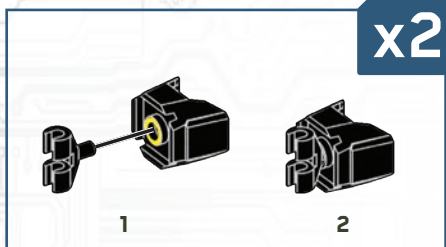
48



2X



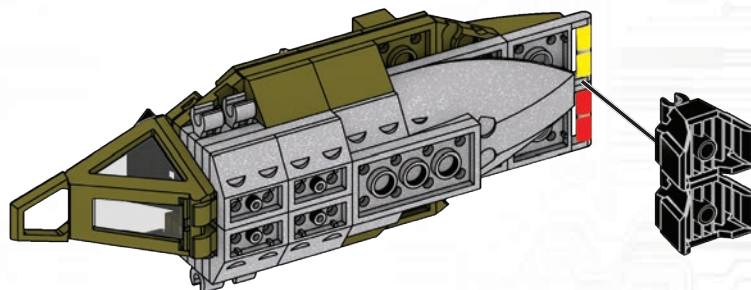
2X



1

2

x2



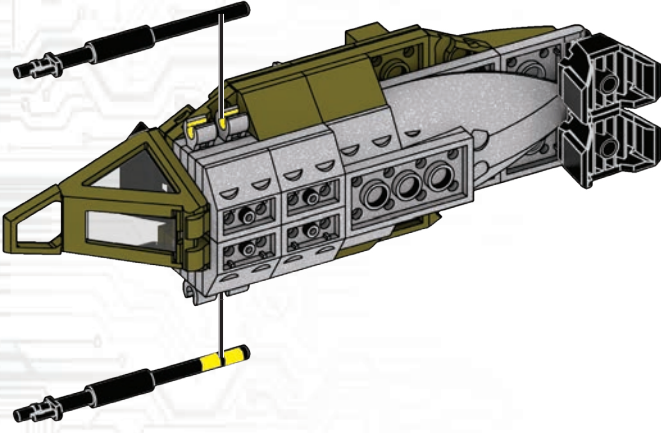
49

2X

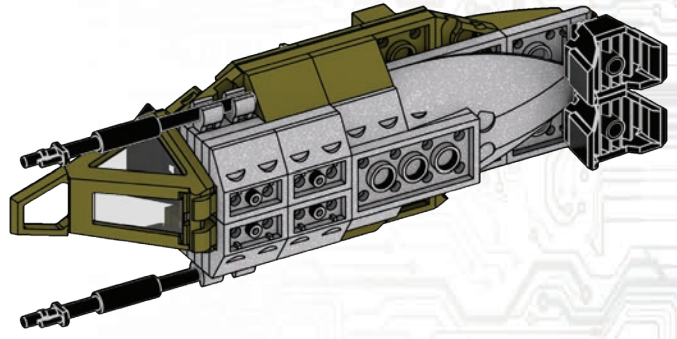
2X

2X

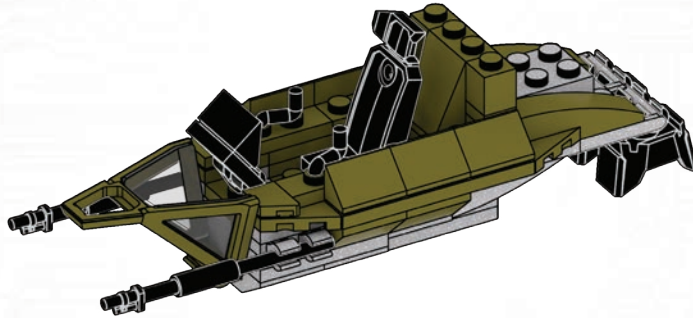
x2



1



2



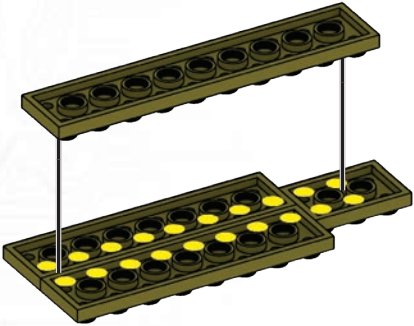
3



50

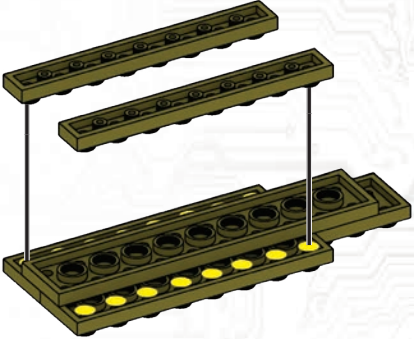
1X 2X

1X



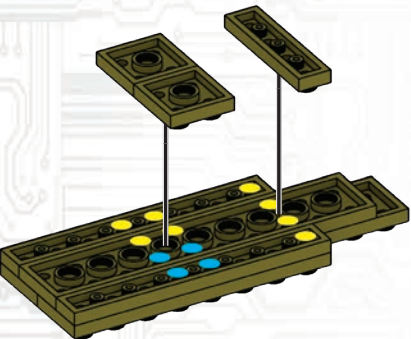
51

2X



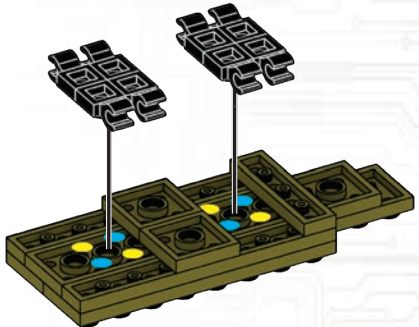
52

2X 1X

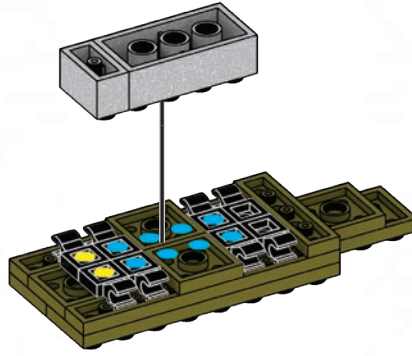
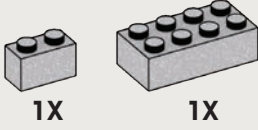


53

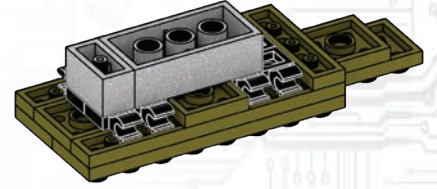
8X



54

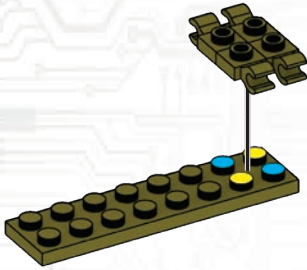
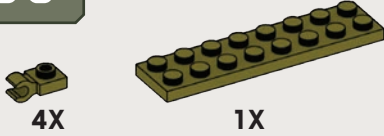


1

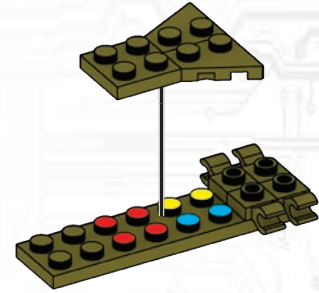


2

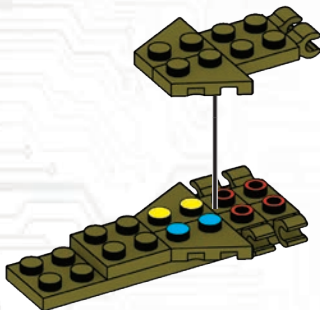
55



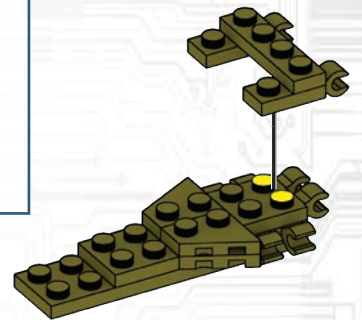
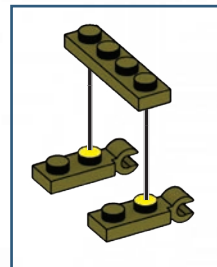
56



57



58



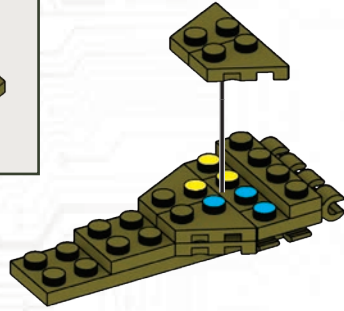
59



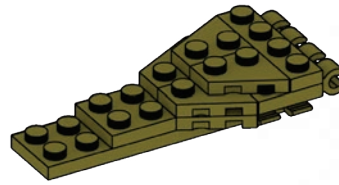
1X



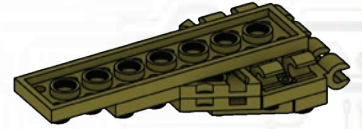
1X



1



2



3

60



1X



2X



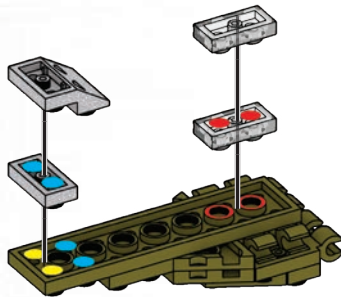
1X



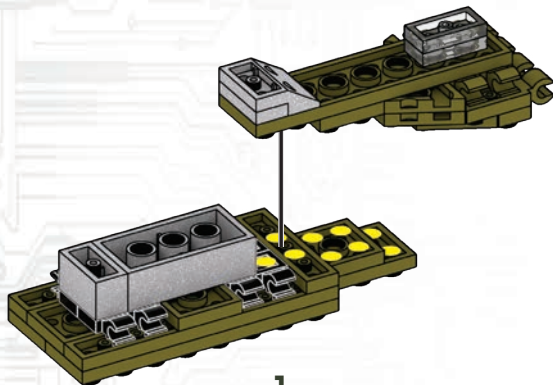
Place temporary pieces. / Placer les pièces temporaires. / Colocar las piezas provisionales. / Colocar as peças temporárias. / Posizionare i pezzi provvisori. / Die vorübergehend benötigten Teile platzieren. / Umieścić tymczasowe elementy. / Plaats tijdelijke delen. / Поместите временные детали. / Placér midlertidige stykker. / Placera temporära delar. / Plasser midlertidige deler. / Aseta väliaikaiset osat. / Τοποθετήστε το προσωρινό κομμάτι. / Geçici parçaları yerleştirin. / Umístěte dočasné díly. / Vložte dočasné kusy. / Helyezze el az ideiglenes darabokat. / 暫定ピースを配置してください

ضع القطع المؤقت.

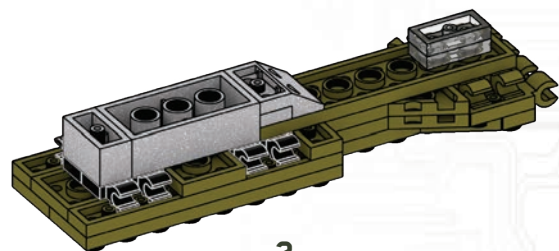
放置临时件



61



1

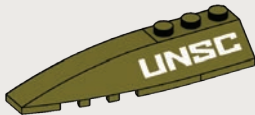


2

62



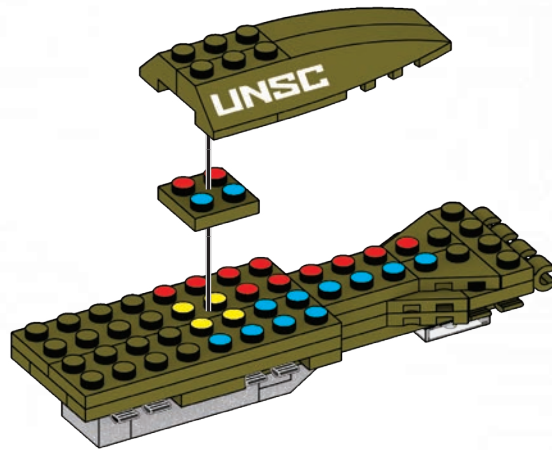
1X



1X



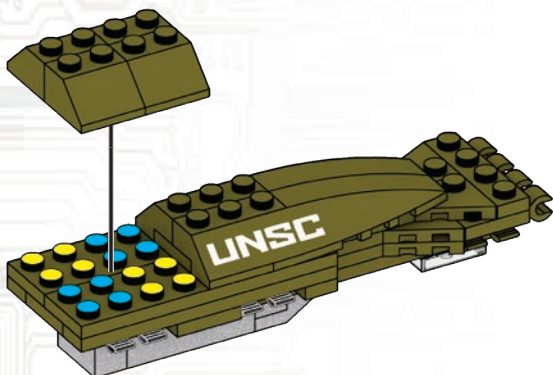
1X



63



4X



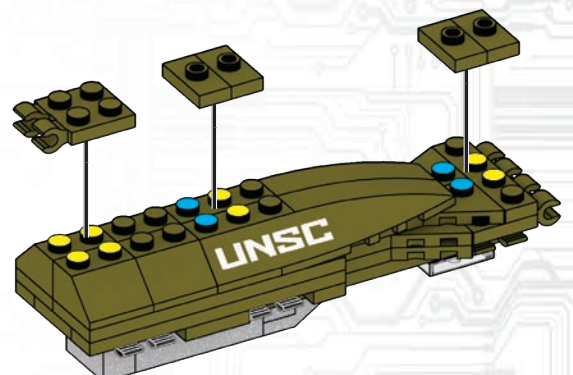
64



4X



1X



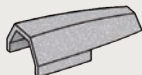
65



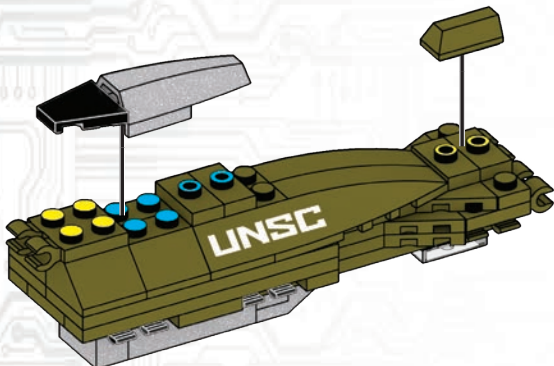
1X



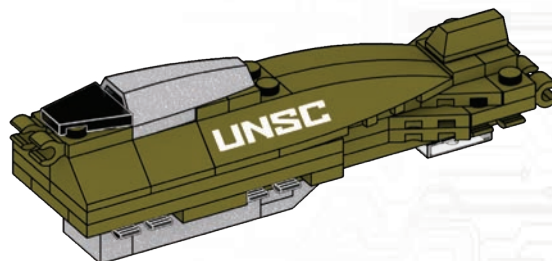
1X



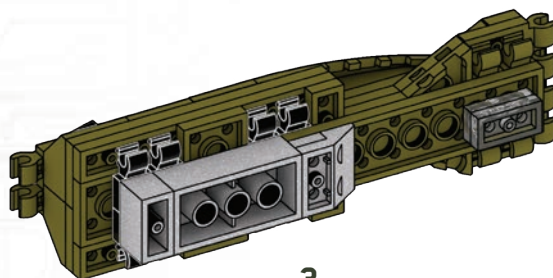
1X



1



2



3

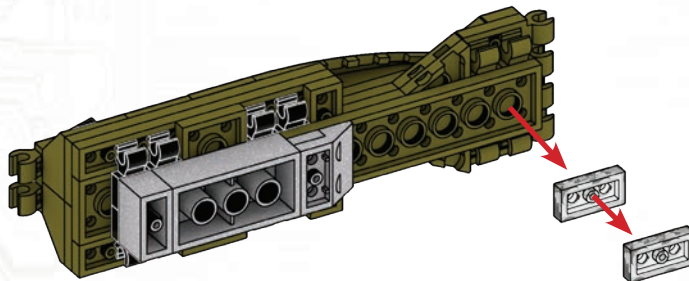
66



Remove temporary pieces. / Retirer les pièces temporaires. / Retirar las piezas provisionales.
 Remover as peças temporárias. / Rimuovere i pezzi provvisori. / Die vorübergehend benötigten Teile entfernen
 Usunać elementy tymczasowe. / Verwijder tijdelijke delen. / Удалите временные детали. / Fjern midlertidige stykker.
 Ta bort temporära delar. / Fjern midlertidige deler. / Poista väliaikaiset osat. / Αφαιρέστε τα προσωρινά κομμάτια.
 Geçici parçaları çıkarın. / Odstraňte dočasné diely. / Vyberte dočasné kusy. / Távolítsa el az ideiglenes darabokat.
 暫定ピースを外してください

انزع القطع المؤقتة.

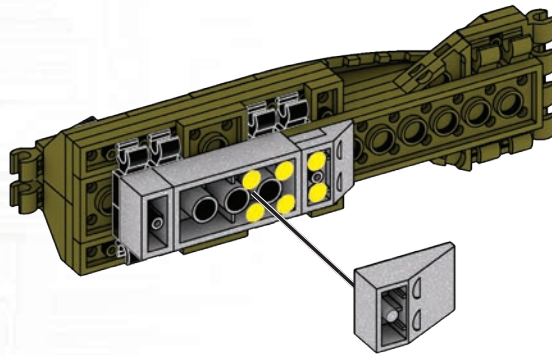
移除临时件



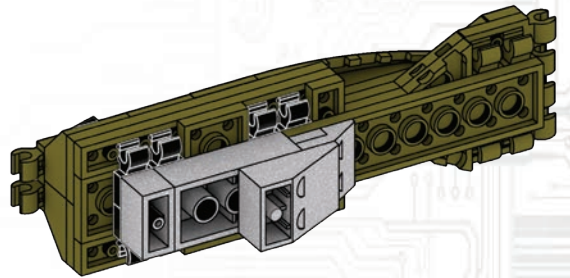
67



1X



1



2

68

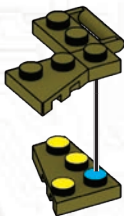


1X

1X

1X

1X



69



1X



1



2

70

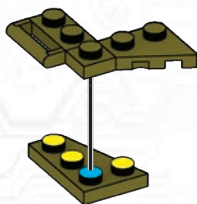


1X

1X

1X

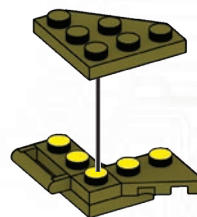
1X



71



1X

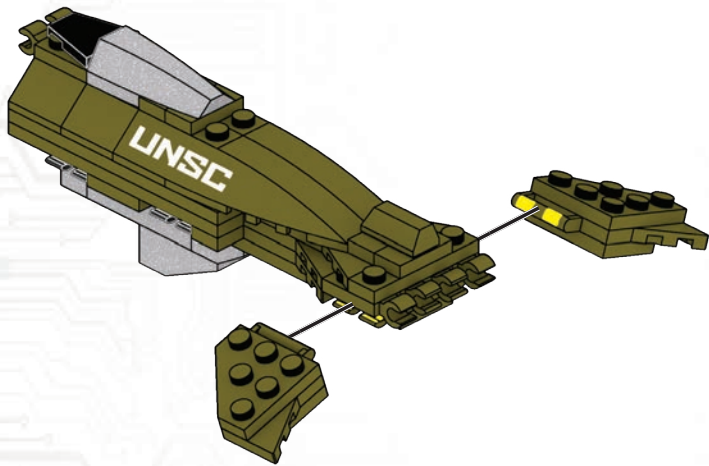


1

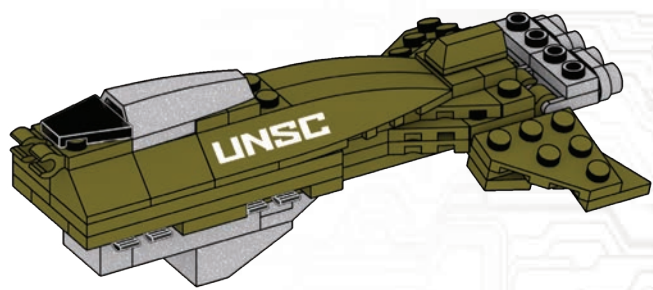
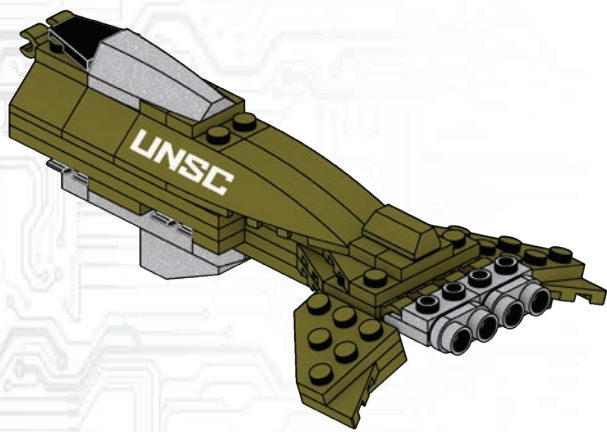
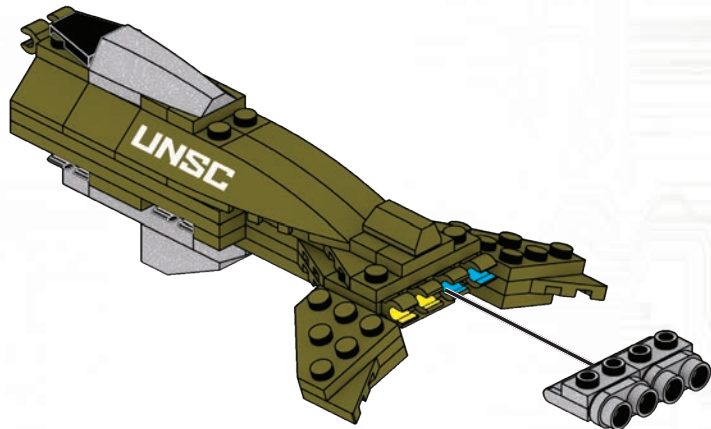
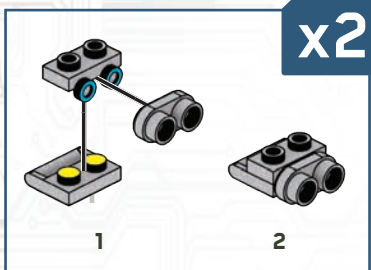


2

72



73

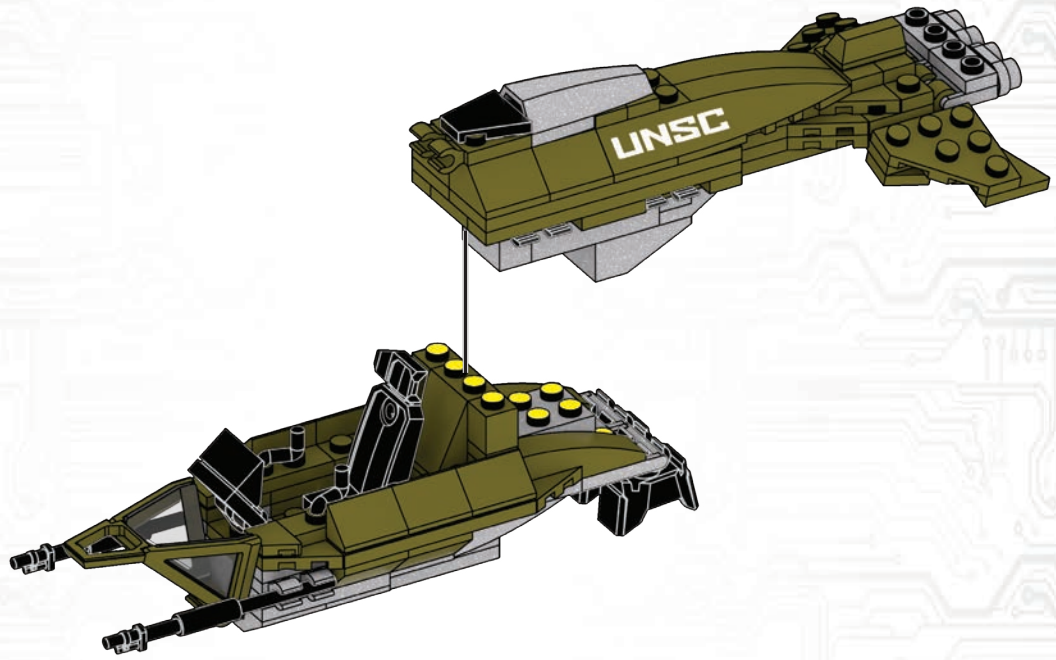


2

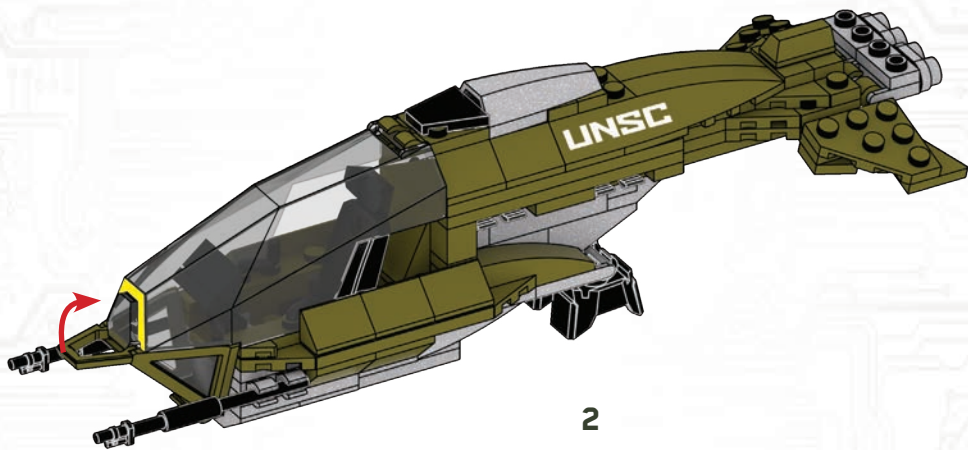
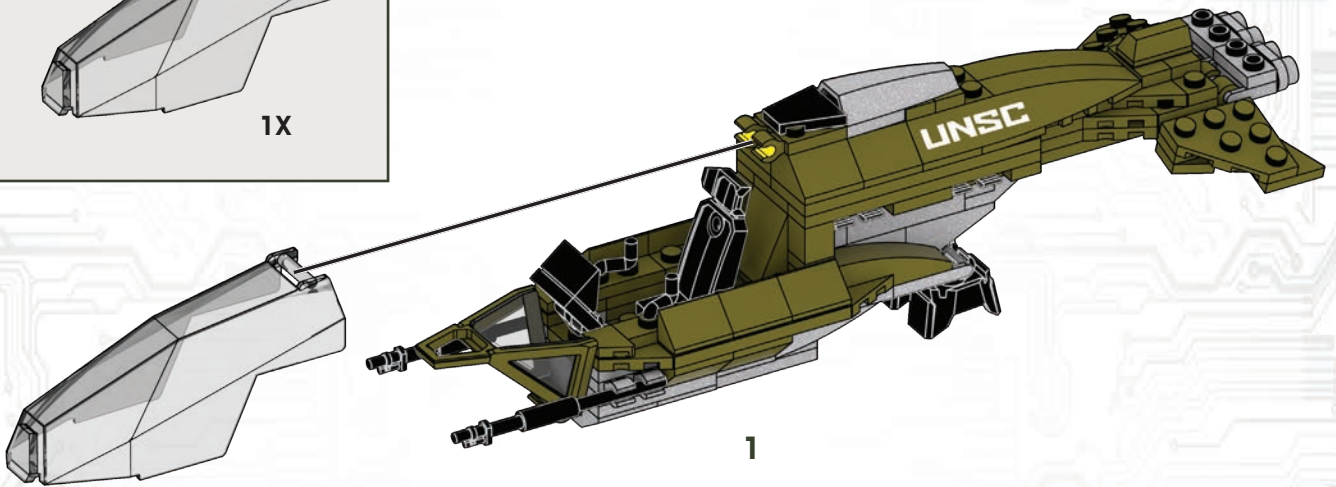
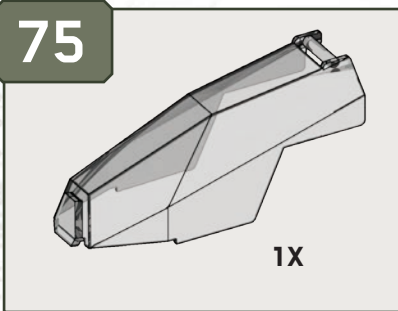
1

3

74



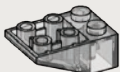
75



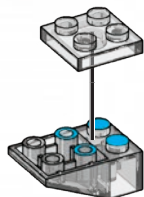
76



1X



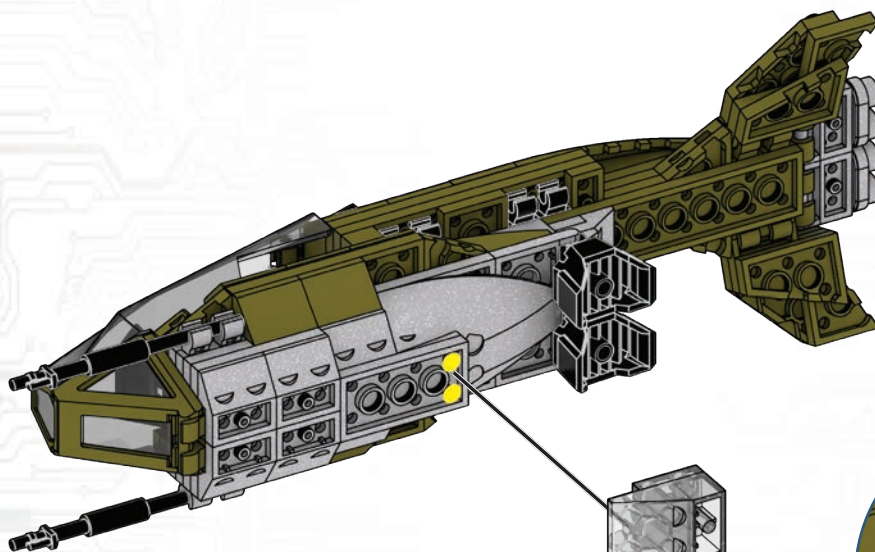
1X



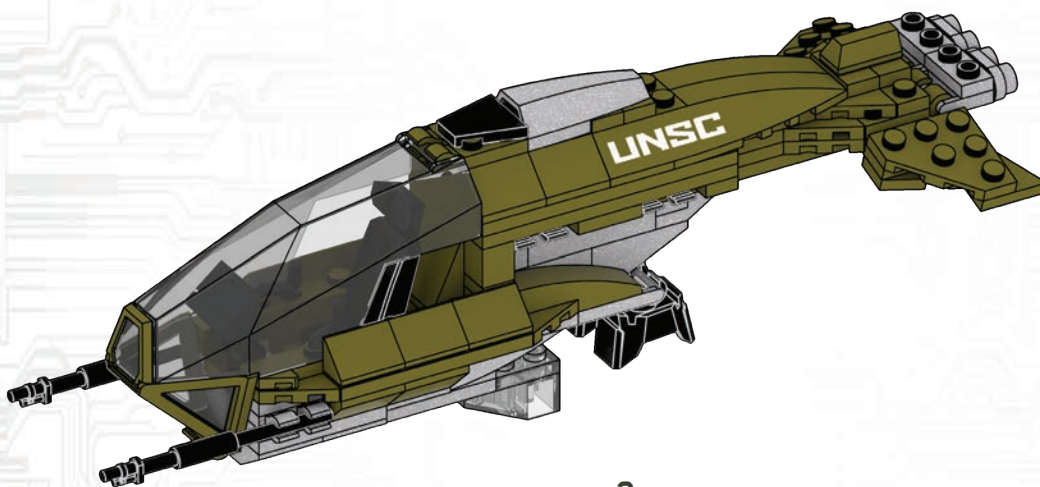
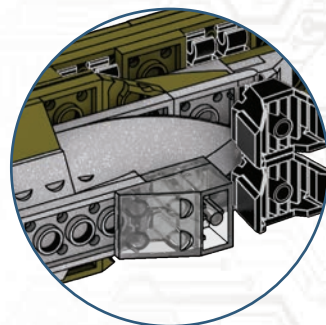
1



2



1



2

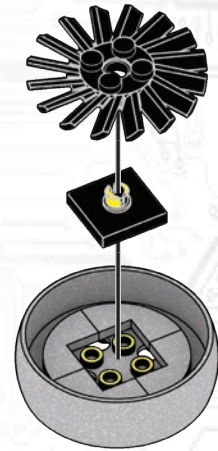
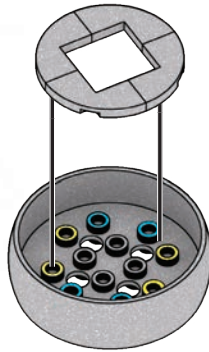


77

4X 1X

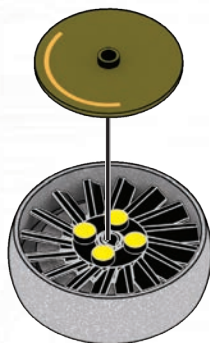
78

1X 1X

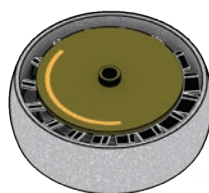


79

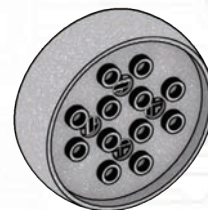
1X



1



2



3

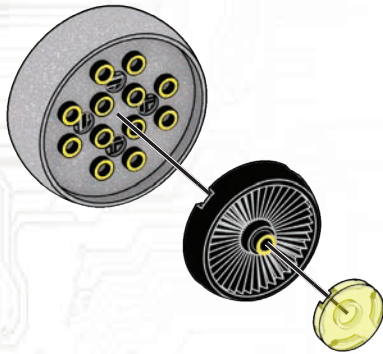
80



1X



1X

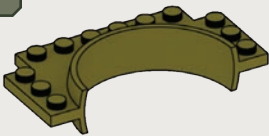


1

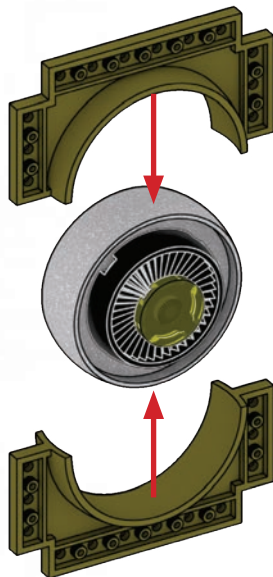


2

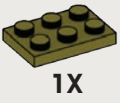
81



2X



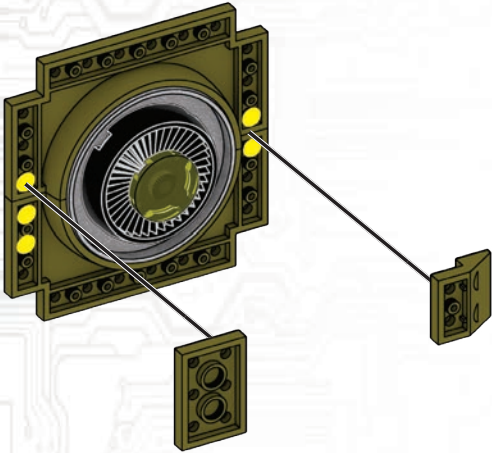
82



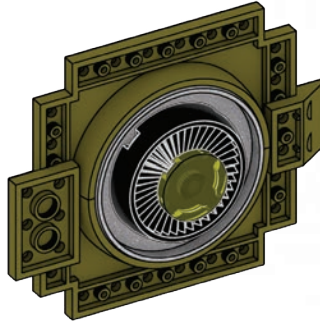
1X



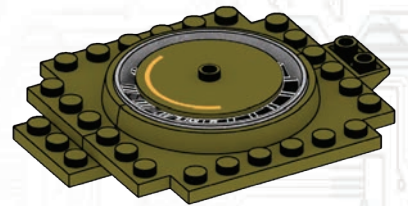
1X



1



2



3

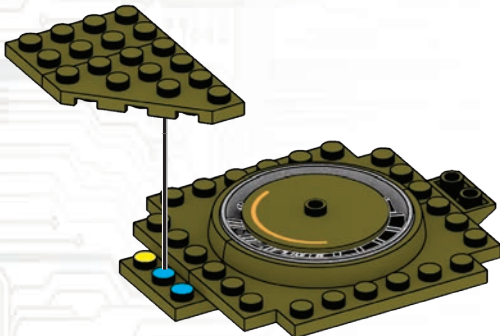
83



1X



1X



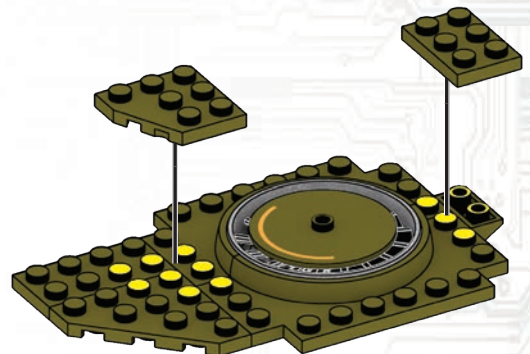
84



1X



1X



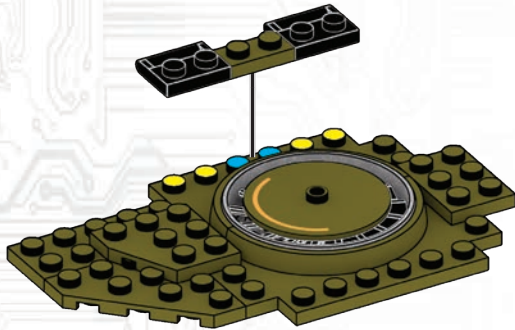
85



1X



2X



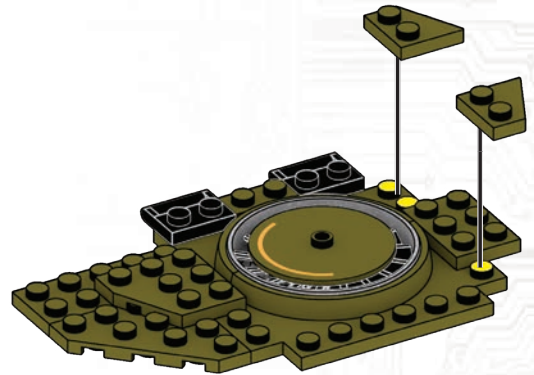
86



1X



1X



87



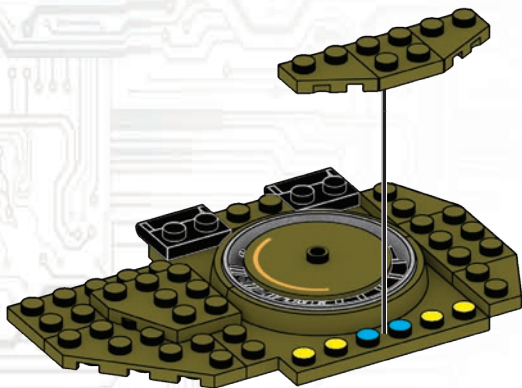
1X



1X



1X



88



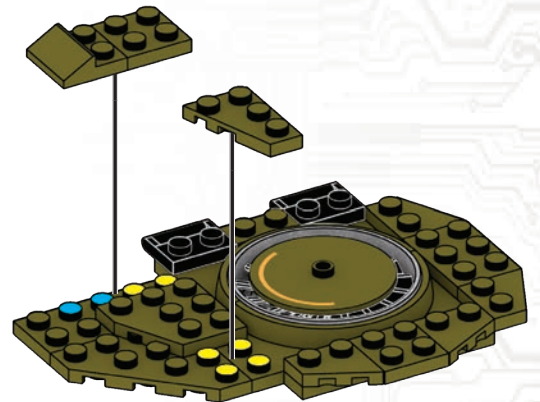
1X



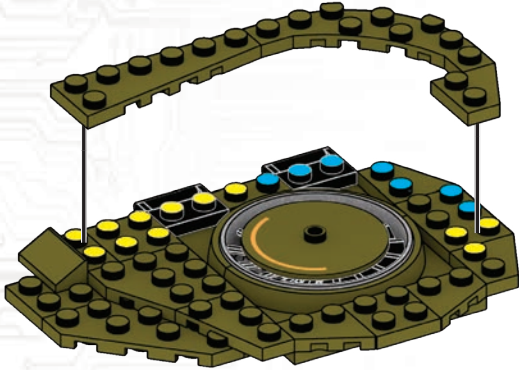
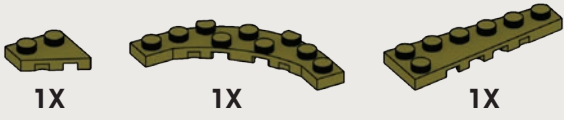
1X



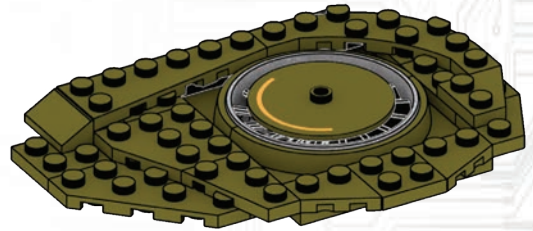
1X



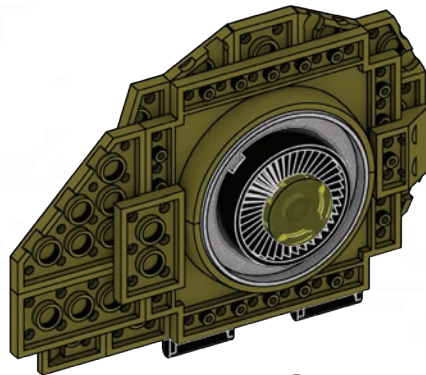
89



1

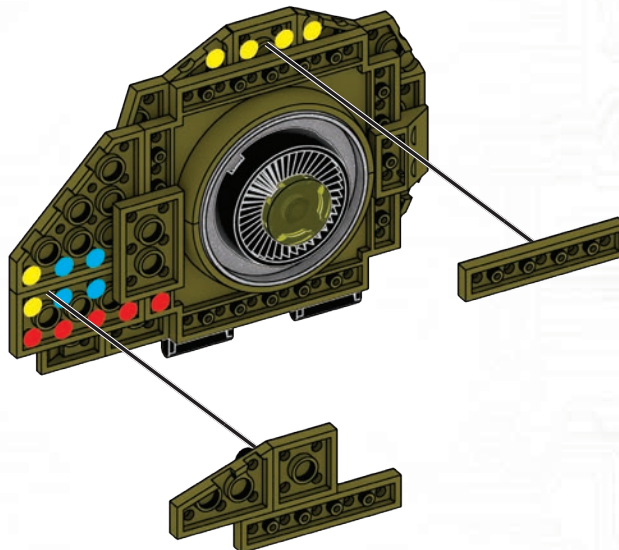
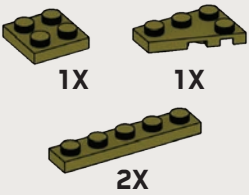


2



3

90



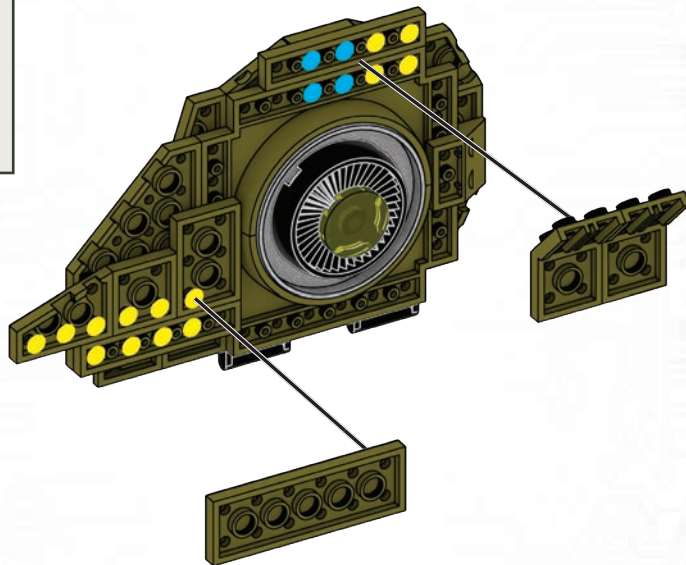
91



1X



2X



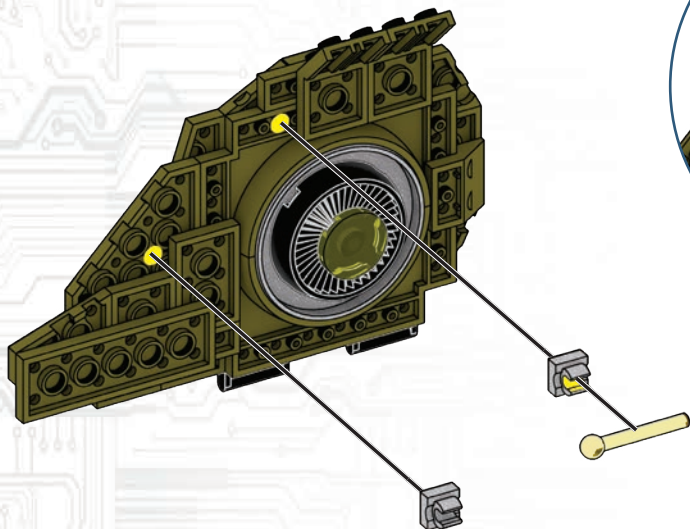
92



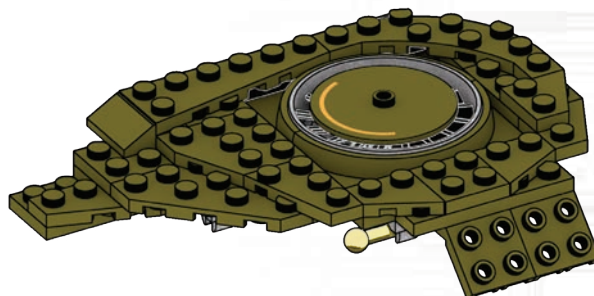
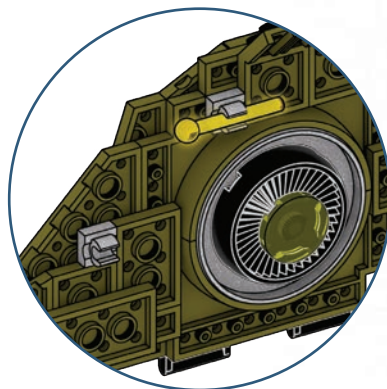
2X



1X



1



2

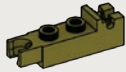
93



1X



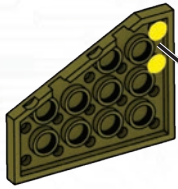
1X



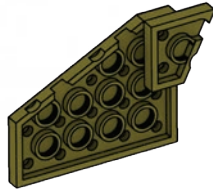
1X



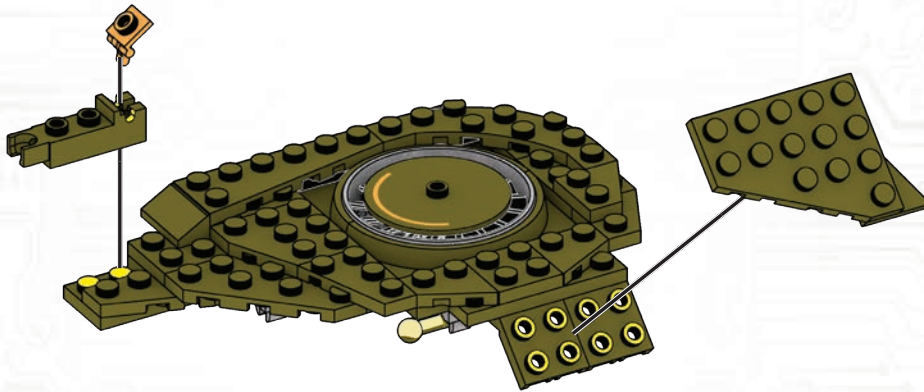
1X



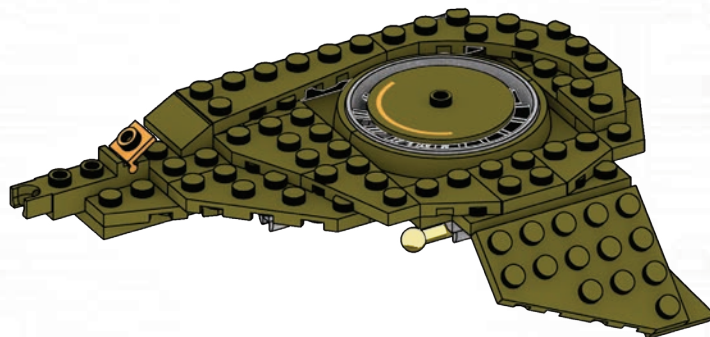
1



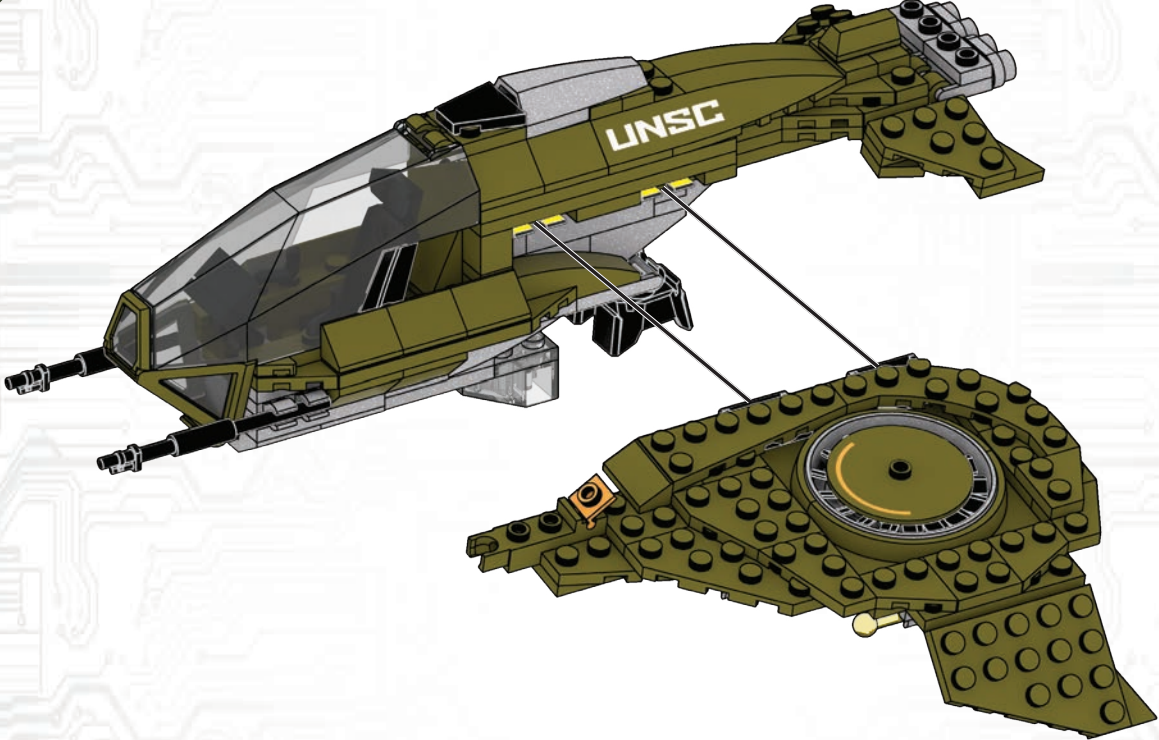
2



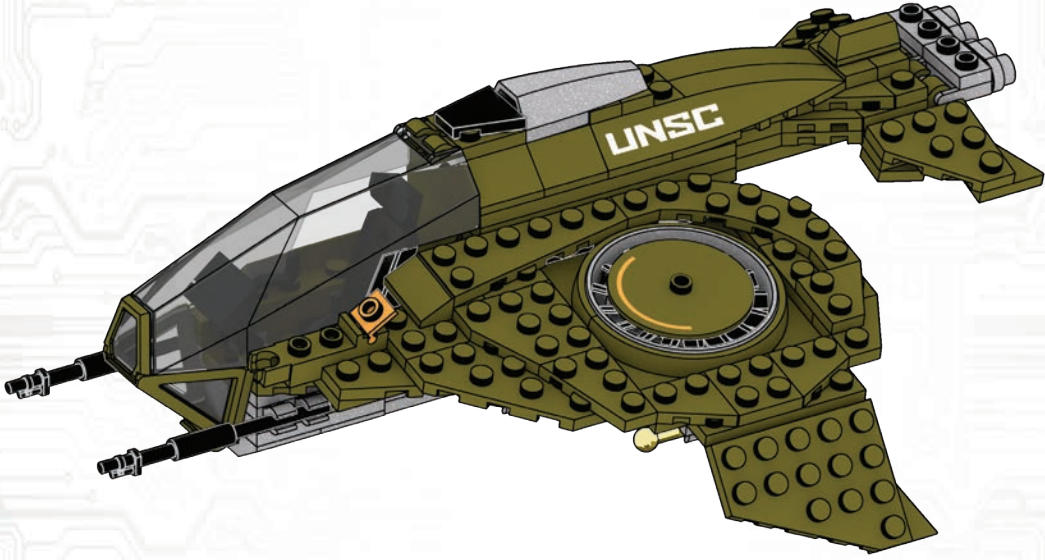
1



2



1



2

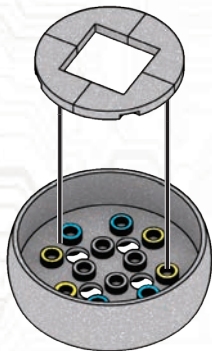
95



4X



1X



96



1X



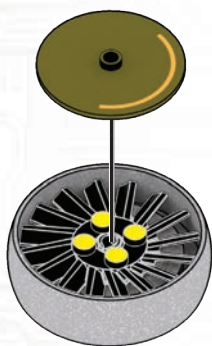
1X



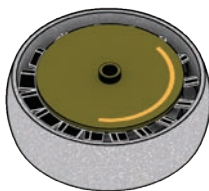
97



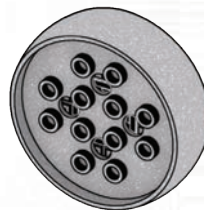
1X



1



2



3

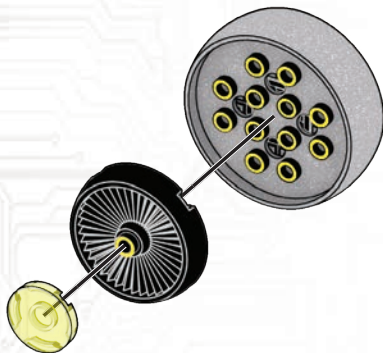
98



1X



1X



1

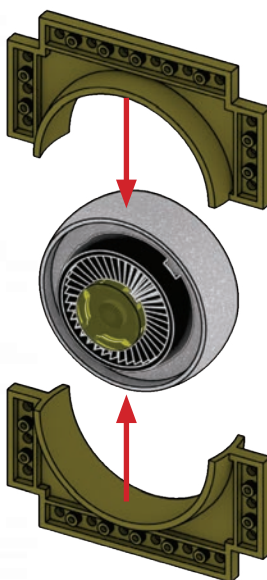


2

99



2X



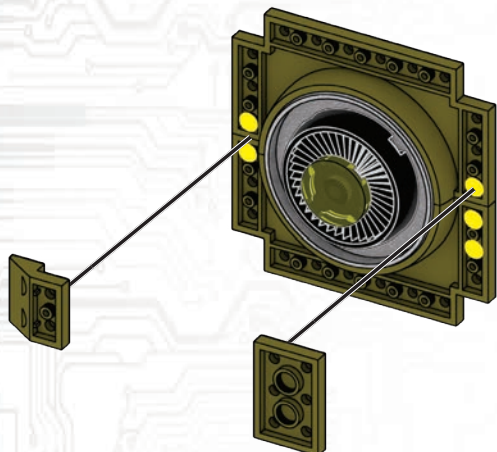
100



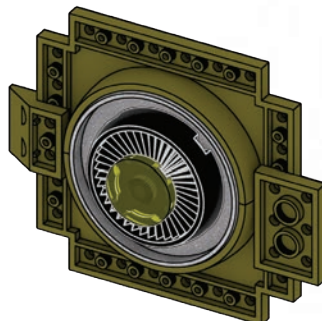
1X



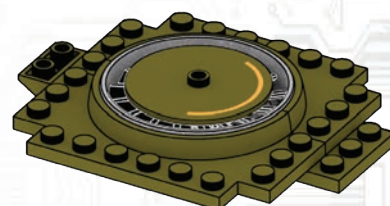
1X



1



2



3

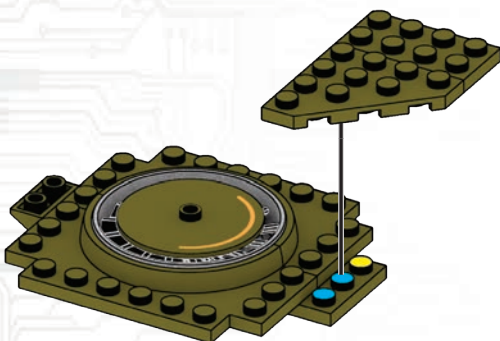
101



1X



1X



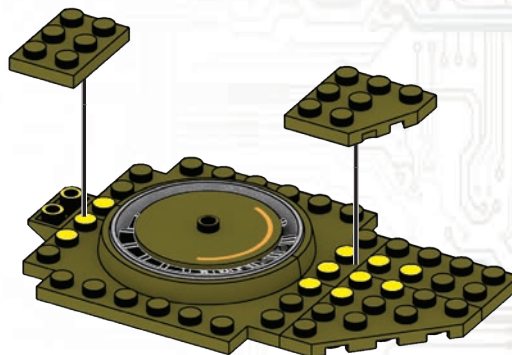
102



1X



1X



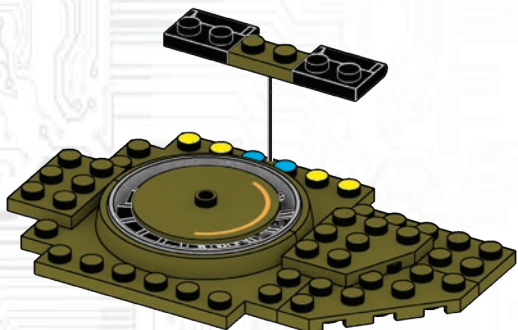
103



1X



2X



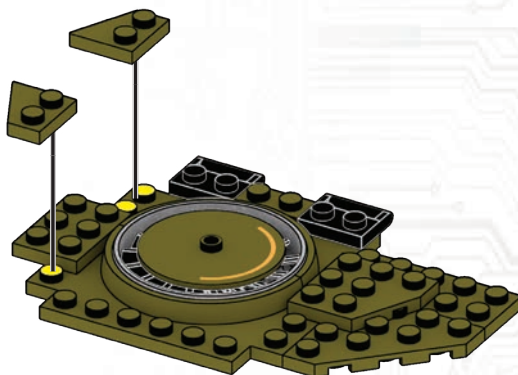
104



1X



1X



105



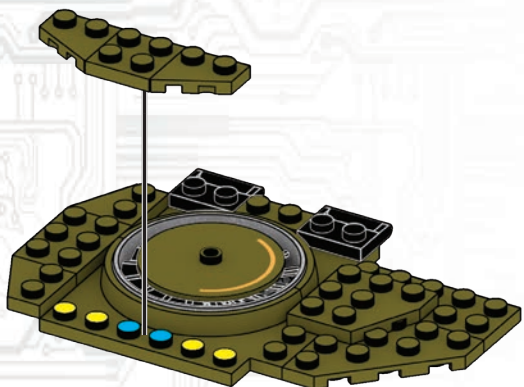
1X



1X



1X



106



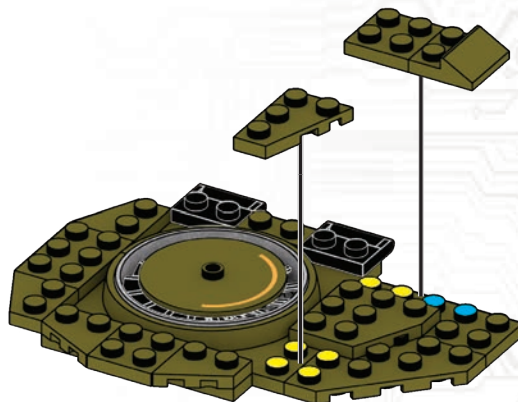
1X



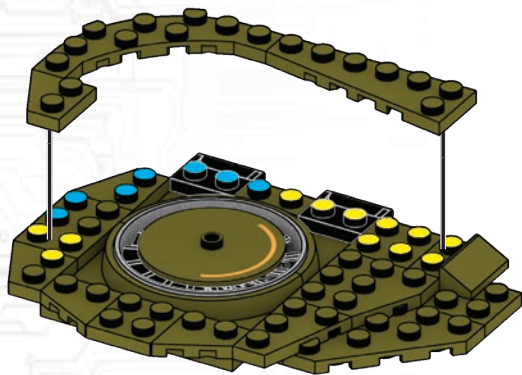
1X



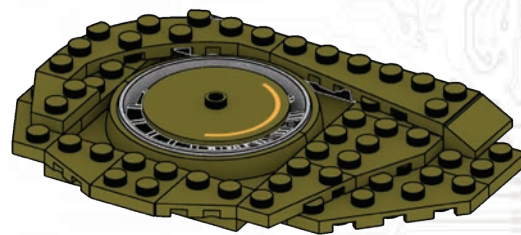
1X



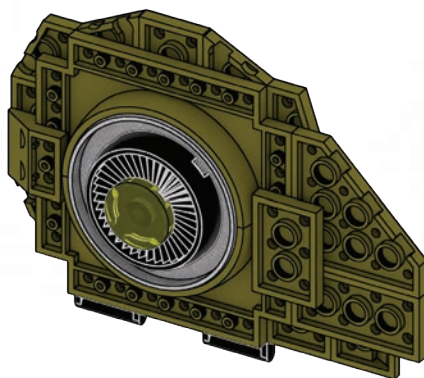
107



1

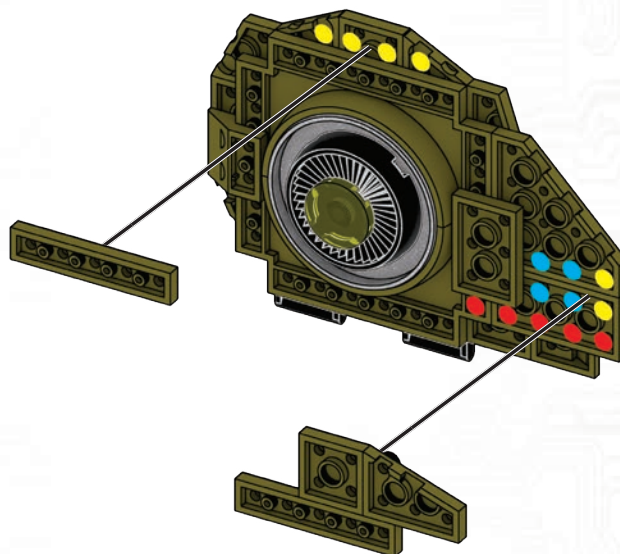
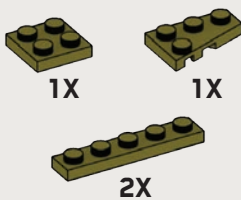


2



3

108



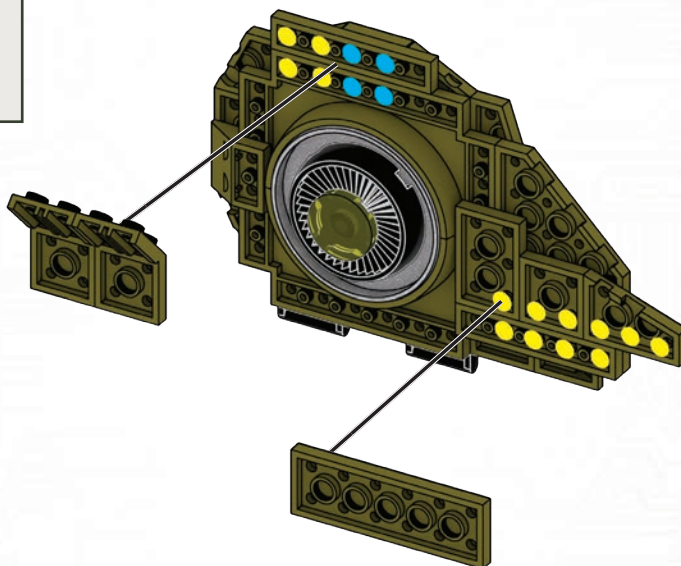
109



1X



2X



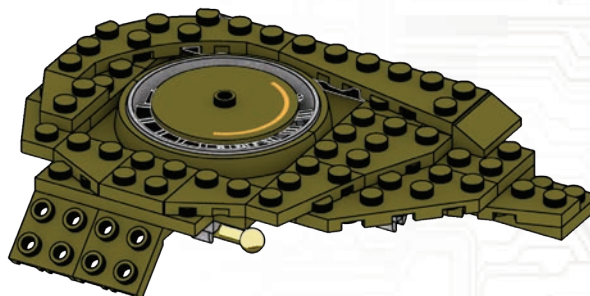
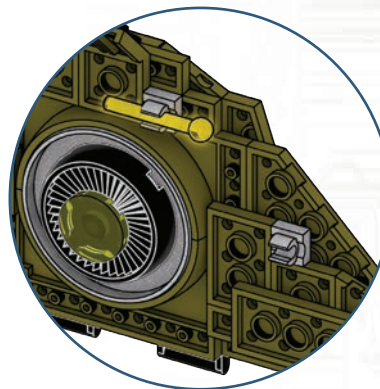
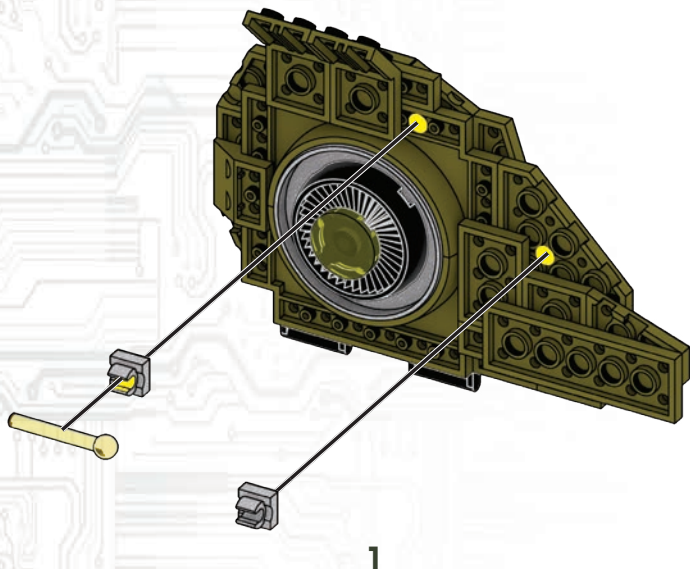
110



2X



1X



111



1X



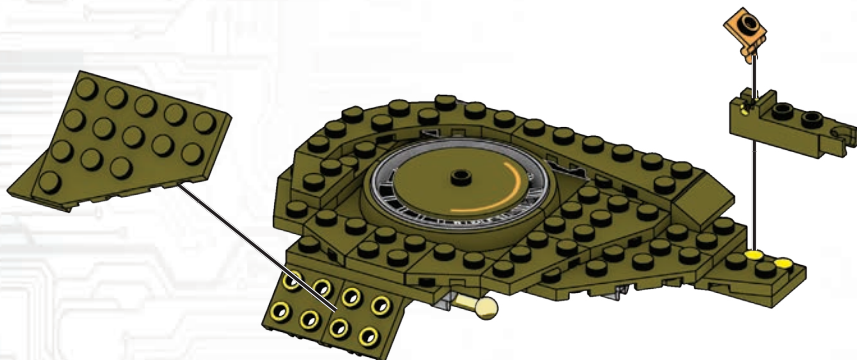
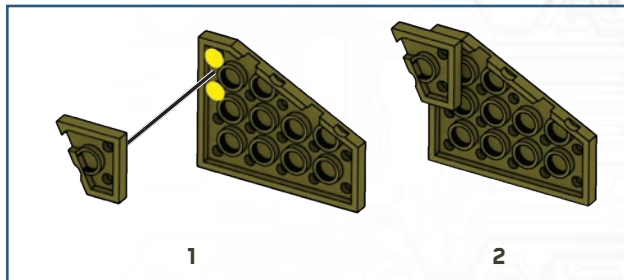
1X



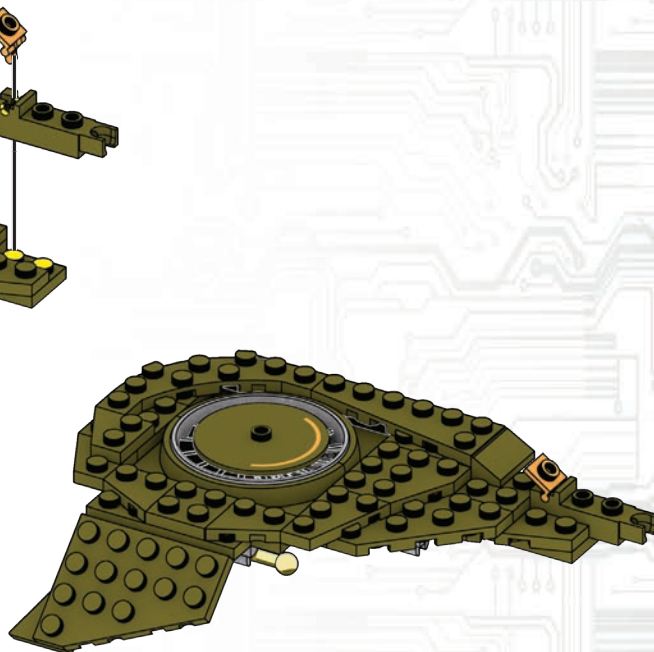
1X



1X

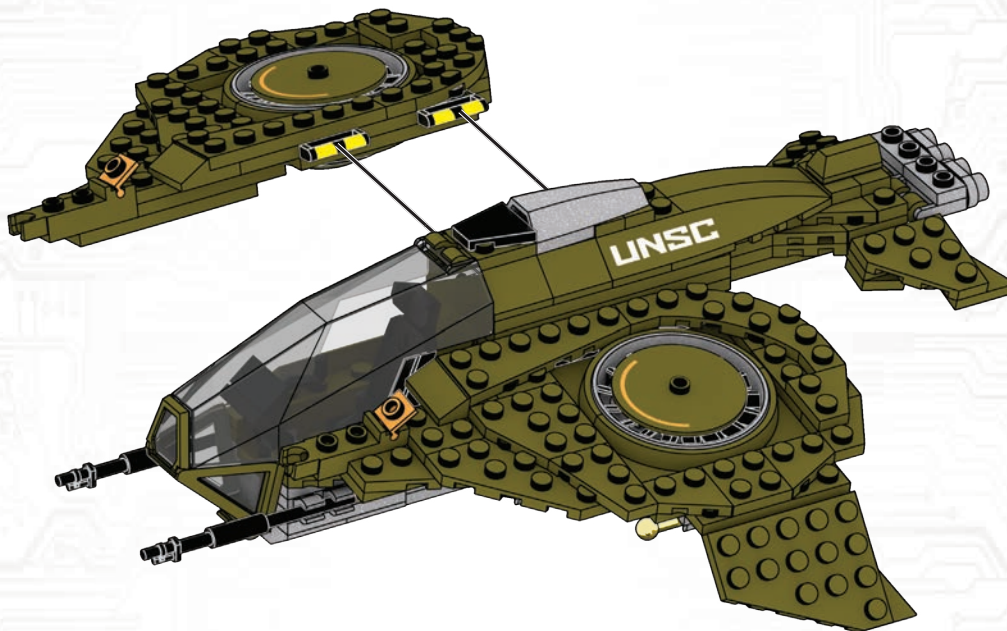


1



2

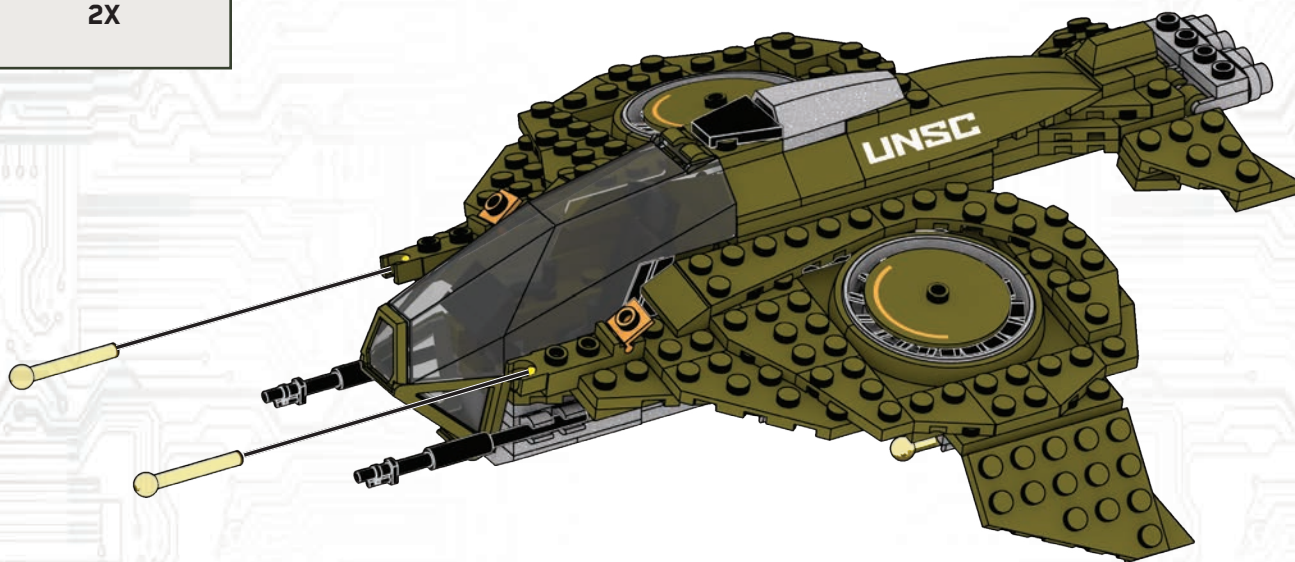
112



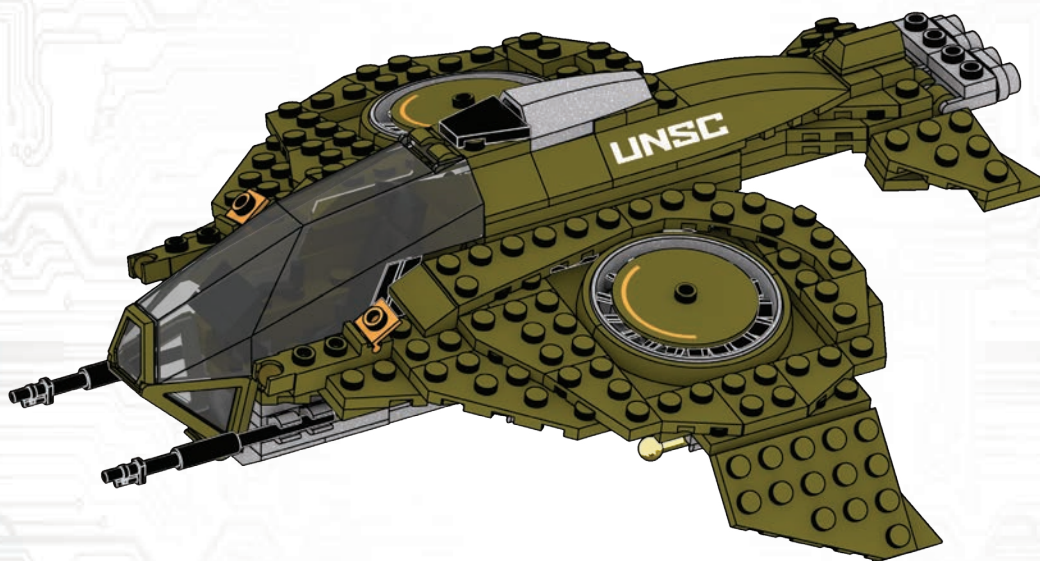
113



2X



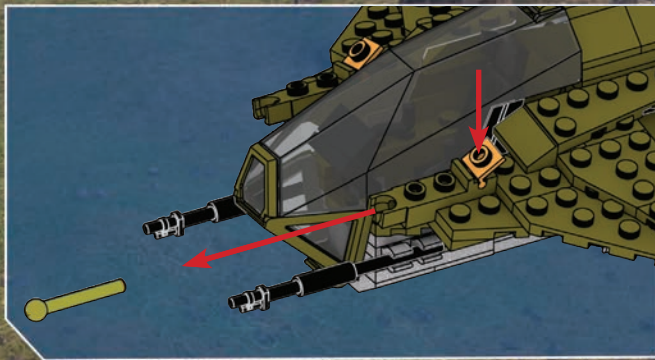
1



2

GRUNT CONSCRIPT

HUNTER



Warning: Do not aim at eyes or face. Only use projectiles supplied with this toy. Do not fire at point blank range.
 Attention : Ne pas viser les yeux ou le visage. Ne pas utiliser d'autres projectiles que ceux fournis avec ce jouet. Ne pas tirer à bout portant.
 Advertência: No apontar hacia los ojos o la cara. Utilizar exclusivamente los proyectiles suministrados con este juguete. No disparar a quemarropa.
ATENÇÃO!: Não apontar em direção aos olhos ou ao rosto. Usar apenas os projéteis fornecidos com este brinquedo. Não disparar à queima-roupa.
 Avvertenza: Non mirare agli occhi o al viso. Usare solo i proiettili forniti con il giocattolo. Non sparare a distanza ravvicinata.
 Achtung: Nicht auf Augen oder Gesicht zielen. Nur die zu diesem Spielzeug gehörenden Projektile verwenden. Nicht auf Menschen oder Tiere oder aus nächster Nähe zielen.
 Ostrzeżenie: Nie celuj w oczy i twarz. Nie strzelaj pociskami innymi niż dostarczone z zabawką. Nie strzelaj z bliska.
 Waarschuwing: niet op ogen of gezicht richten. Gebruik uitsluitend de bijgeleverde projectielen. Niet van te dichtbij afschieten.
 Предупреждение: Не направляйте в глаза или лицо. Используйте только снаряды, входящие в комплект. Не стреляйте со слишком близкого расстояния.
 Advarsel: Sigt ikke mod øjne eller ansigt. Brug kun de projektiler, som følger med legetøjet. Skyd ikke direkte på personer eller ting.
 Varning: Sikta inte mot ögon eller ansikte. Använd endast projektiler som medföljer leksaken. Fyra inte av på mycket nära håll.
 Advarsel: Du må ikke sikte mot øyne eller ansikt. Bruk bare prosjektilene som følger med leken. Ikke skyt på noe på kloss hold.
 Varoitus: Älä tähtää silmiin äläkä kasvoihin. Käytä ainoastaan tämän tuotteen mukana tulleita ammuksia. Älä ammu lähietäisyydeltä.
 Προσοχή: Μην στοχεύετε στα μάτια ή στο πρόσωπο. Χρησιμοποιείτε μόνο τα βλήματα που περιλαμβάνονται. Μην στοχεύετε όταν δεν έχετε ορατότητα.
 Uyarı: Göze veya yüze nişan almayın. Fırlatmak için yalnızca bu oyuncakla birlikte verilen objeleri kullanın. İnsanlara ve hayvanlara nişan almayın.
 Upozornění: Nemířte na oči nebo na obličej. Používejte pouze projektily dodávané s touto hračkou. Nestřílejte z bezprostřední blízkosti.
 Upozornenie: Nemierte do očí ani do tváre. Používajte iba strely dodané spolu s touto hračkou. Nestrielajte z bezprostrednej blízkosti.
 Figyelmeztetés: Tilos szemre és arcra célozni. Kizárólag a játékhoz mellékelt lövedékeket használja. A játékkal tilos közvetlen közelről löni.
 警告: 目や顔を狙わないでください。このおもちゃに同梱されている発射物のみ使用するよう to してください。到達可能な距離内で火を燃やさないでください。
 تحذير: يجب عدم التصويب باتجاه العينين أو الوجه. يجب استخدام المقذوفات المزودة مع هذه اللعبة فقط. يجب عدم الإطلاق من مدى قريب.

警告: 请勿对着眼睛或脸部发射。仅使用本玩具自带的抛射物。请勿近距离射击。

UNSC WASP ONSLAUGHT ▪ ATTAQUE DU WASP DE L'UNSC
EMBESTIDA DEL UNSC WASP ▪ INVESTIDA DE WASP UNSC

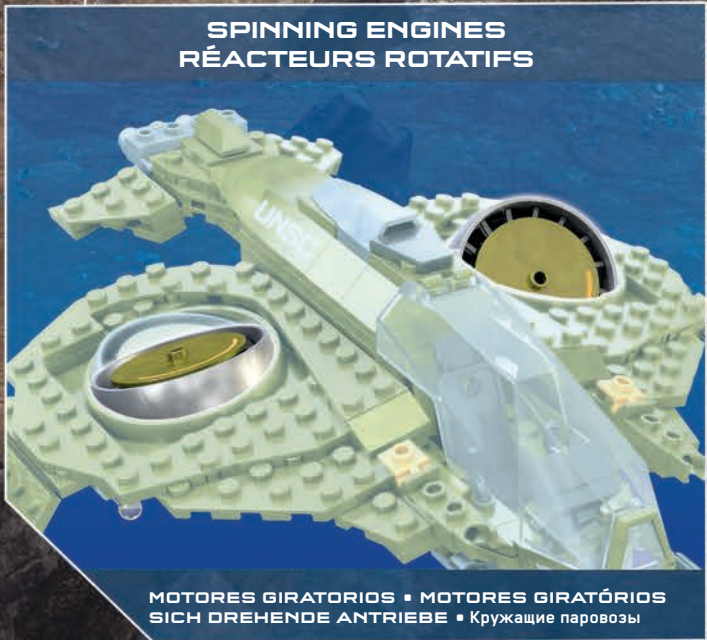
ASSALTO WASP UNSC | UNSC WASP ATTACKE | ATAK UNSC WASP | UNSC WESP AANVAL | HATICK UNSC WASP | UNSC ΕΠΕΛΑΣΗ | UNSC WASP SALDIRISI
UNSC WASP TÁMADÁS | UNSC WASP-ATTACK | UNSC WASP – ANGREB




MASTER CHIEF

SPINNING ENGINES
RÉACTEURS ROTATIFS

UNSC MARINE



MOTORES GIRATORIOS ▪ MOTORES GIRATÓRIOS
SICH DREHENDE ANTRIEBE ▪ Кружащие паровозы

6X  AM01113AAV

2X  AM78600FM

4X  AM03328AXU

2X  AM03328AKM

4X  AM18623APG


2X  AM01086AXU

2X  AM01140AKM

2X  AM19328AWC

8X  AM74415F

6X  AM74415AXU

1X  AM74299AXU

1X  AM74300AXU

3X  AM18260F

2X  AM18260AWC

2X  AM17506F

2X  AM73904F

2X  AM19327APG

1X  AM78866AXU

1X  AM72331AKM

4X  AM022501AAV

5X  AM07590AXU

3X  AM09393APG

4X  AM09393AXU

2X  AM09393AKM

2X  AM09393W

2X  AM76467APG

1X  AM79070AKM

1X  AM76467AKM

2X  AM16649APG

4X  AM18740AWC

1X  AM18232AXU

12X  AM18665AXU

12X  AM18666AXU

2X  AM02215AMZ

2X  AM78486AKM

6X  AM03019AXU

1X  AS-GYG60-03

8X  AM18667APG

2X  AM72000APG

2X  AM72000AXU

5X  AM72000F

2X  AM81262F

1X  AM76456F

2X  AM76456AWC

1X  AM03484GD

1X  AM03485GD

1X  AM03773W

10X  AM03773AXU

2X  AM03773AWC

1X  AM09268F

2X  AM0948AWC

1X  AM18525AWC

1X  AM09013APG

1X  AM09013AWC

2X  AM76354F

4X  AM78601ZD

7X  AM18223APG


2X  AM18223AXU

2X  AM78189AXU

1X  AM74106AKM

4X  AM01154AXU

4X  AM10273AXU


1X  AM72330AKM

1X  AM15488AKM

1X  AM18562AXU

1X  AM17049F

2X  AM76663F

2X  AM16975AXU

2X  AM74298AXU

4X  AM16653AXU

2X  AM18328AXU

2X  AM18328APG

2X  AM18329APG

2X  AM18329AWC

3X  AM17073AXU

2X  AM17073AKM

3X  AM17074AXU

2X  AM17074AKM

2X  AM03772AKM

6X  AM03772AXU

1X  AM01139APG


1X  AM01139W

2X  AM76521F

2X  AM19323AXU

2X  AS-GYG60-05

2X  AM16640F

2X  AM18279AXU

1X  AM18282AXU

1X  AM18283AXU

5X  AM09593AXU

2X  AM09593AWC

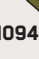
3X  AM09593AKM

1X  AM08416APG

2X  AM74416AKM

1X  AM18299AWC

3X  AM09493AXU

6X  AM09493APG

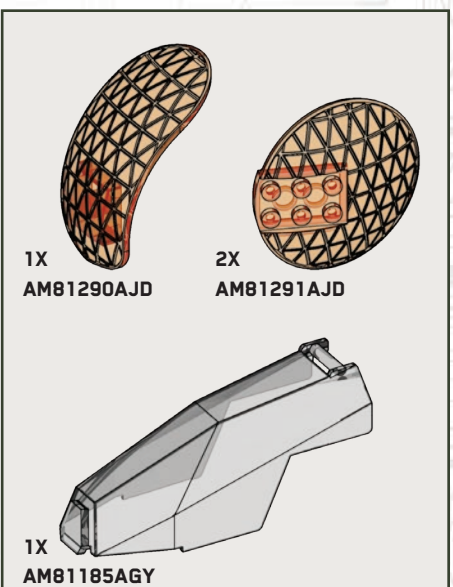
2X  AM09033APG

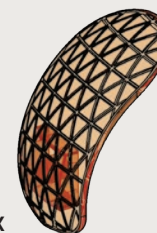
1X  AM76367AAV

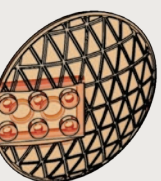
2X  AM78599AXU

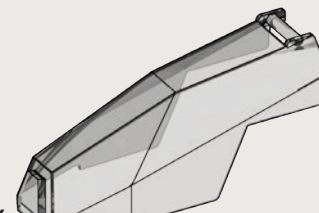
4X  AM07475AXU

4X  AM76357ALG



1X  AM81290AJD

2X  AM81291AJD

1X  AM81185AGY



2X
AM76849AXU



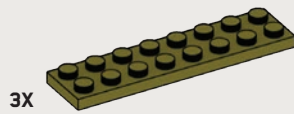
4X
AM74680AKM



1X
AM01480AKM



6X
AM01480AXU



3X
AM08483AXU



2X
AM78897AXU



1X
AM72010AXU



1X
AM72011AXU



1X
AS-GYG60-01



1X
AS-GYG60-02



1X
AM78868AGY



1X
AM78865AXU



2X
AM81189F



1X
AM18280AXU



1X
AM18281AXU



4X
AM81186AXU



2X
AM81188APG



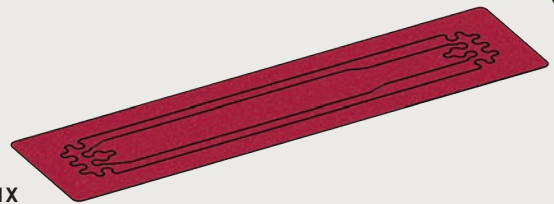
2X
AM19198AWC



2X
AM18298AXU



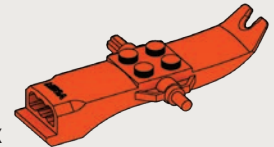
1X
AM09923AXU



1X
AS-GYG60-04



1X
AM76217APG



1X
AM80855MCX



1X
FIG-GYG60-A



1X
FIG-GYG60-B



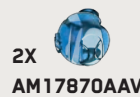
1X
FIG-GYG60-C



1X
FIG-GYG60-D



2X
AM80869F



2X
AM17870AAV



1X
AM75907SX



2X
AM80861F

Instructions included for main model only. Other build(s) can be found at megaconstrux.com / Instructions incluses pour le modèle principal uniquement. Les instructions pour l'(les) autre(s) modèle(s) de construction se trouvent sur le site megaconstrux.com / Nur für das Hauptmodell ist eine Anleitung enthalten. Unter megaconstrux.com finden Sie weitere Bauanleitungen. / Istruzioni incluse solo per il modello principale. È possibile trovare le altre costruzioni su megaconstrux.com / Instructies alleen bij het hoofdmodel. Andere bouw mogelijkheden kunt u vinden op megaconstrux.com / Se incluyen las instrucciones para el modelo principal solamente. Se pueden encontrar otras construcciones en megaconstrux.com / Instruções incluídas somente para o modelo principal. Outras montagens podem ser encontradas em megaconstrux.com / Instruktioner medföljer endast för huvudmodellen. Andra byggen finns på megaconstrux.com / Ohjeet ovat sisällytetyjä vain päämalleihin. Muut kokoonpanot ovat löydettävissä osoitteessa megaconstrux.com / Vejlædningen følger kun med hovedmodellen. Andre byggemodeller kan findes på megaconstrux.com / Instruksjoner kun inkludert for hovedmodell. Annen/andre versjon/-er finner du på megaconstrux.com / Załączono instrukcję tylko do głównego modelu. Inne wersje są dostępne na megaconstrux.com / Pribalené pokyny jsou pouze pro hlavní model. Ostatní stavby lze najít na megaconstrux.com / Pribalené pokyny sú iba hlavný model. Ostatné stavby možno nájsť na megaconstrux.com / A mellékelt utasítások csak a fő modellre vonatkoznak. Egyéb építőelem(ek) a megaconstrux.com weboldalon található(k) / Инструкция относится только к основной модели. Другие конструкции можно найти на сайте megaconstrux.com / Οι οδηγίες που περιλαμβάνονται είναι μόνο για το κύριο μοντέλο. Μπορείτε να βρείτε άλλες κατασκευές στο megaconstrux.com / Yönergeler sadece ana modeller için dahil edilmiştir. Diğer yapı parçaları megaconstrux.com adresinde bulunabilir / メインのモデルのみの取扱説明書が含まれています。他のはmegaconstrux.comにあります。 / التعليمات موجودة للنموذج الرئيسي فقط. يمكن العثور على بناء (أبناء) أخرى على موقع megaconstrux.com

拼搭指南仅包含主体部分的拼搭指导。其他部分拼搭指导可以上 megaconstrux.com 查找



HALO

**MORE TO COLLECT!
ENCORE PLUS
À COLLECTIONNER!
MÁS PARA
COLECCIONAR!**

**MAIS PARA
COLECIONAR!
MEHR ZUM
SAMMELN!
СОБЕРИ БОЛЬШЕ!**



GYG57



GYG58



Set(s) sold separately and subject to availability. / Ensemble(s) vendu(s) séparément. Certains produits peuvent ne pas être commercialisés. / Se vende(n) por separado y está(n) sujeto(s) a disponibilidad. / Conjunto(s) vendido(s) em separado e sujeito(s) a disponibilidade. / Set in vendita separatamente, secondo disponibilità. / Das/Die Set(s) sind separat erhältlich. / Zestaw(y) sprzedawany(eg) oddzielnie w zależności od dostępności. / Set(s) apart verkrijgbaar en afhankelijk van beschikbaarheid. / Набор(-ы) продаются отдельно, при наличии. / Sæt sælges separat og så længe lager haves. / Seten säljs separat så länge lagret räcker. / Settet/settene selges separat så langt lageret rekker. / Pakkaus/pakkaukset myydään erikseen, saatavuus voi vaihdella. / Το(α) σετ(α) πωλούνται ξεχωριστά και ανάλογα με τη διαθεσιμότητα. / Setler ayrı olarak satılır ve stoklarla sınırlıdır. / Set (sety) se prodává (prodávají) samostatně dle aktuální nabídky. / Сұйрау/-ы са предáва(л)у samostatne a podľa dostupnosti. / A készlet(ek) külön kapható(k), az elérhetőség változhat. / セット商品は別売りになります。在庫状況は別途ご確認ください。

تباع المجموعة أو المجموعات على حدة وتخضع لتوافرها.

每套单独发售，按供货情况决定。

Mattel Europa B.V., Gondel 1, 1186 MJ Amstelveen, Nederland. Mattel U.K. Limited, The Porter Building, 1 Brunel Way, Slough SL1 1FQ, UK. Mattel France, Parc de la Cerisaie, 1/3/5 allée des Fleurs, 94260 Fresnes Cedex. N° Cristal 0969 36 99 99 (Numéro non surtaxé) ou www.lesjouetsmattel.fr Mattel Belgium, Trade Mart, Atomiumsquare, Bogota 202 - B 275, 1020 Brussels. Gratis nummer België: 0800 - 16 936 - Gratis nummer Luxemburg: 800 - 22 784 - Gratis nummer Nederland: 0800 - 262 88 35. Deutschland : Mattel GmbH, Solmsstraße 4, D-60486 Frankfurt am Main. Schweiz: Mattel AG, Kirchstrasse 24, CH-3097 Liebefeld. Österreich: Mattel Ges.m.b.H., Campus 21, Liebermannstraße A01 404, A- 2345 Brunn/Gebirge. Mattel Italy Srl, Via Bracco, 6-MAC 6, 20159 Milano. Italy. Servizio assistenza clienti: Customersrv.italia@mattel.com - Numero verde 800 11 37 11. Mattel España, S.A., Arribau 200, 08036 Barcelona. c.service.spain@mattel.com Tel: 902203010 http://www.service.mattel.com/es. Mattel East Asia Ltd., Room 503-09, North Tower, World Finance Centre, Harbour City, Tsimshatsui, HK, China. Tel.: (852) 3185-6500. Dilmport & Diedarkan Oleh: Mattel Continental Asia Sdn Bhd. Level 19, Tower 3, Avenue 7, No. 8 Jalan Kerinchi, Bangsar South, 59200 Kuala Lumpur, Malaysia. Mattel South Africa (PTY) LTD, Office 102 B, 30 Melrose Boulevard, Johannesburg 2196. Dystrybutor: Mattel Poland Sp. z o.o., Warsaw Trade Tower 34 p., ul. Chłodna 51, 00-867 Warszawa. Mattel Australia Pty. Ltd., 658 Church St., Richmond, Victoria, 3121. Consumer Advisory Service - 1300 135 312. Mattel AEBE, ΕΒνάρχου Μακαρίου 1, Κτήριο Κ-2, ΤΚ 17561, Παλαιό Φάληρο. Mattel Oyuncakçılık Tic. Ltd. Şti. İkerenkoy Mah., Erkut Sok. A Blok No:12 Uner Plaza Kat:9-10 34752 Ataşehir İstanbul. Tel: 0216 570 75 00. Импортёр/Уполномоченная организация: ООО "МАТТЕЛ" Российская Федерация, 105120 Москва, 2-й Сыромятнический переулок, 1; +7 495 287 79 39. Forg: Mattel Toys Hungary Kft 1139 Budapest Váci út 91. +36 1 270 0223. Mattel Czech Republic s.r.o., The Forum, Václavské nám. 19, 11000 Praha1. Mattel, 333 Continental Boulevard, El Segundo, CA 90245, USA. Consumer Services: 1-800-465-MEGA (6342). Importado y distribuido por Mattel de México, S.A. de C.V., Miguel de Cervantes Saavedra No. 193, Pisos 10 y 11, Col. Granada, Alcaldía Miguel Hidalgo, C.P. 11520, México, Ciudad de México. R.F.C. MME-920701-NB3. Tels: 59-05-51-00 Ext. 5206 ó 01-800-463-59-89. Mattel Chile, S.A., Avenida Américo Vespucio 501-B, Quilicura, Santiago. Tel: 1230-020-6213. Servicio al consumidor Venezuela: Tel: 0-800-100-9123. Mattel Argentina, S.A., Av. Libertador 1000, Piso 11 - Oficinas 109 y 111, Vicente López - Prov. Buenos Aires. Tel.: 0800-666-3373. Mattel Colombia, S.A., Calle 123#7-07 P5, Bogotá. Tel.: 01800-710-2069. Mattel Perú, S.A., Av. Juan de Arona # 151, Centro Empresarial Juan de Arona, Torre C, Piso 7, Oficina 704, San Isidro, Lima 27, Perú. RUC: 20425853865. Reg. Importador: 02350-12-JUE-DIGESA. Tel.: 0800-54744. E-mail Latinoamérica: servicio.clientes@mattel.com. Mattel do Brasil Ltda. - CNPJ : 54.558.002/0001-20 - Rua Verbo Divino, 1488 - 2º - Andar - 04719-904 - Chácara Santo Antônio - São Paulo - SP - Brasil. Serviço de Atendimento ao Consumidor: fone 0800 575 0780. E-mail: sac.matteldobrazil@mattel.com



1186 MJ, 1, NL

©D714,887, D781,964, D797,203, D841,101

© 2020 Microsoft Corporation. All Rights Reserved. Microsoft, Halo, the Halo logo, Xbox, the Xbox logo, and 343 Industries are trademarks of the Microsoft group of companies.

©2020, MEGA Brands Inc. & MEGA Brands Inc. CONSTRUX™ is owned by Mattel and used under license. CONSTRUX™ appartient à Mattel et est utilisée sous licence. Printed in China / Imprimé en Chine AD-GYG60-01

Mattel Canada Inc. Mississauga, Ontario L5R 3W2. MADE IN CHINA. FABRIQUÉ EN CHINE. FABRICADO NA / HECHO EN CHINA. ИЗГОТОВЛЕНО В КИТАЕ. ÇIN'DE ÜRETİLMİŞTİR. صنع في الصين

