



T.M.X.™

INSTRUCTIONS

Please keep these instructions for future reference as they contain important information.

BEFORE YOU BEGIN

Be sure the ON/OFF switch is in the ON position.
The ON/OFF switch is located on the bottom of Elmo's right foot.

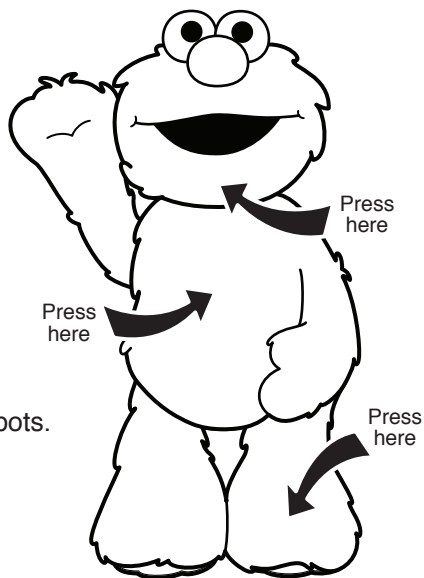
HOW TO PLAY

1. "Tickle" (press) Elmo in one of the following three "tickle" spots:
 - Chin
 - Belly
 - Left foot
2. "Tickle" Elmo a second time in any tickle spot.
3. "Tickle" him three times in a row for maximum laughter and play!

IMPORTANT NOTE:

When you "tickle" Elmo, you actually should press or squeeze his ticklish spots.

The demo sound unit included with the package is not a part of the toy. It includes non-replaceable batteries. Dispose of demo sound unit safely.



H9207-0920

Sesame Workshop®, Sesame Street® and associated characters, trademarks and design elements are owned and licensed by Sesame Workshop.
©2006 Sesame Workshop.
All Rights Reserved.

Questions?
service.fisher-price.com

In US and Canada
1-800-432-5437

H9207



Fisher-Price, Inc., a subsidiary of Mattel, Inc., East Aurora, NY 14052 U.S.A.
PRINTED IN CHINA. Manufactured for Fisher-Price.
©2006 Mattel, Inc. All Rights Reserved.
Fisher-Price and the Fisher-Price logo are U.S. trademarks of Mattel, Inc.
Packaging and address should be retained for future reference.
Mattel Canada Inc., Mississauga, Ontario L5R 3W2.
You may call us free at 1-800-432-5437.
Mattel U.K. Ltd., Vanwall Business Park, Maidenhead SL6 4UB.
Helpline 01628500303.
Mattel Australia Pty., Ltd., Richmond, Victoria. 3121.
Consumer Advisory Service - 1300 135 312.
Mattel East Asia Ltd., Room 1106, South Tower, World Finance Centre, Harbour City, Tsimshatsui, HK, China.
Diimport & Diedarkan Oleh: Mattel SEA Ptd Ltd.(993532-P) Lot 13.5, 13th Floor, Menara Lien Hoe, Persiaran Tropicana Golf Country Resort, 47410 PJ.
Tel:03-78803817, Fax:03-78803867.
Mattel, Inc., 333 Continental Blvd., El Segundo, CA 90245 U.S.A.
Consumer Affairs 1 (800) 524-Toys.

IMPORTANT NOTE ON BATTERY REPLACEMENT

If sounds play slowly or distort and/or Elmo does not perform his play function properly, **DO NOT RETURN TO THE STORE.**
Replace the batteries with fresh batteries as shown.

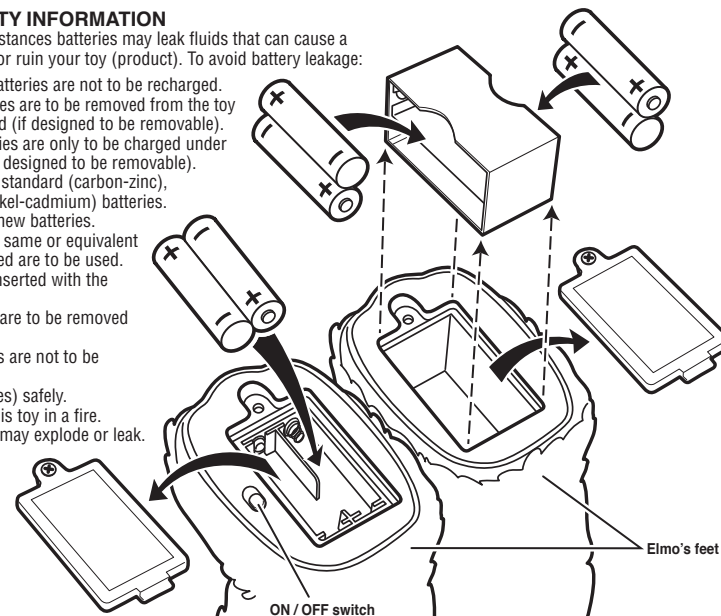
BATTERY INSTALLATION:

Unscrew and lift covers away from bottom of Elmo's feet. Replace batteries as shown. For longer life use only alkaline batteries. Requires 6 "AA" (LR6) batteries.

BATTERY SAFETY INFORMATION

In exceptional circumstances batteries may leak fluids that can cause a chemical burn injury or ruin your toy (product). To avoid battery leakage:

- Non-rechargeable batteries are not to be recharged.
 - Rechargeable batteries are to be removed from the toy before being charged (if designed to be removable).
 - Rechargeable batteries are only to be charged under adult supervision (if designed to be removable).
 - Do not mix alkaline, standard (carbon-zinc), or rechargeable (nickel-cadmium) batteries.
 - Do not mix old and new batteries.
 - Only batteries of the same or equivalent type as recommended are to be used.
 - Batteries are to be inserted with the correct polarity.
 - Exhausted batteries are to be removed from the toy.
 - The supply terminals are not to be short-circuited.
 - Dispose of battery(ies) safely.
 - Do not dispose of this toy in a fire.
- The batteries inside may explode or leak.



This equipment has been tested and found to comply with the limits for a Class B digital device, pursuant to part 15 of the FCC rules. These limits are designed to provide reasonable protection against harmful interference in a residential installation. This equipment generates, uses and can radiate radio frequency energy and, if not installed and used in accordance with the instructions, may cause harmful interference to radio communications. However, there is no guarantee that interference will not occur in a particular installation. If this equipment does cause harmful interference to radio or television reception, which can be determined by turning the equipment off and on, the user is encouraged to try to correct the interference by one or more of the following measures: Reorient or relocate the receiving antenna.

Increase the separation between the equipment and receiver.

Connect the equipment into an outlet on a circuit different from that to which the receiver is connected. Consult the dealer or an experienced radio/TV technician for help.

Mattel Inc. 333 Continental Blvd. El Segundo, CA (310) 252-2400

NOTE: Changes or modifications not expressly approved by the manufacturer responsible for compliance could void the user's authority to operate the equipment.

This device complies with part 15 of the FCC Rules. Operation is subject to the following two conditions:

- (1) This device may not cause harmful interference, and
- (2) this device must accept any interference received, including interference that may cause undesired operation.