



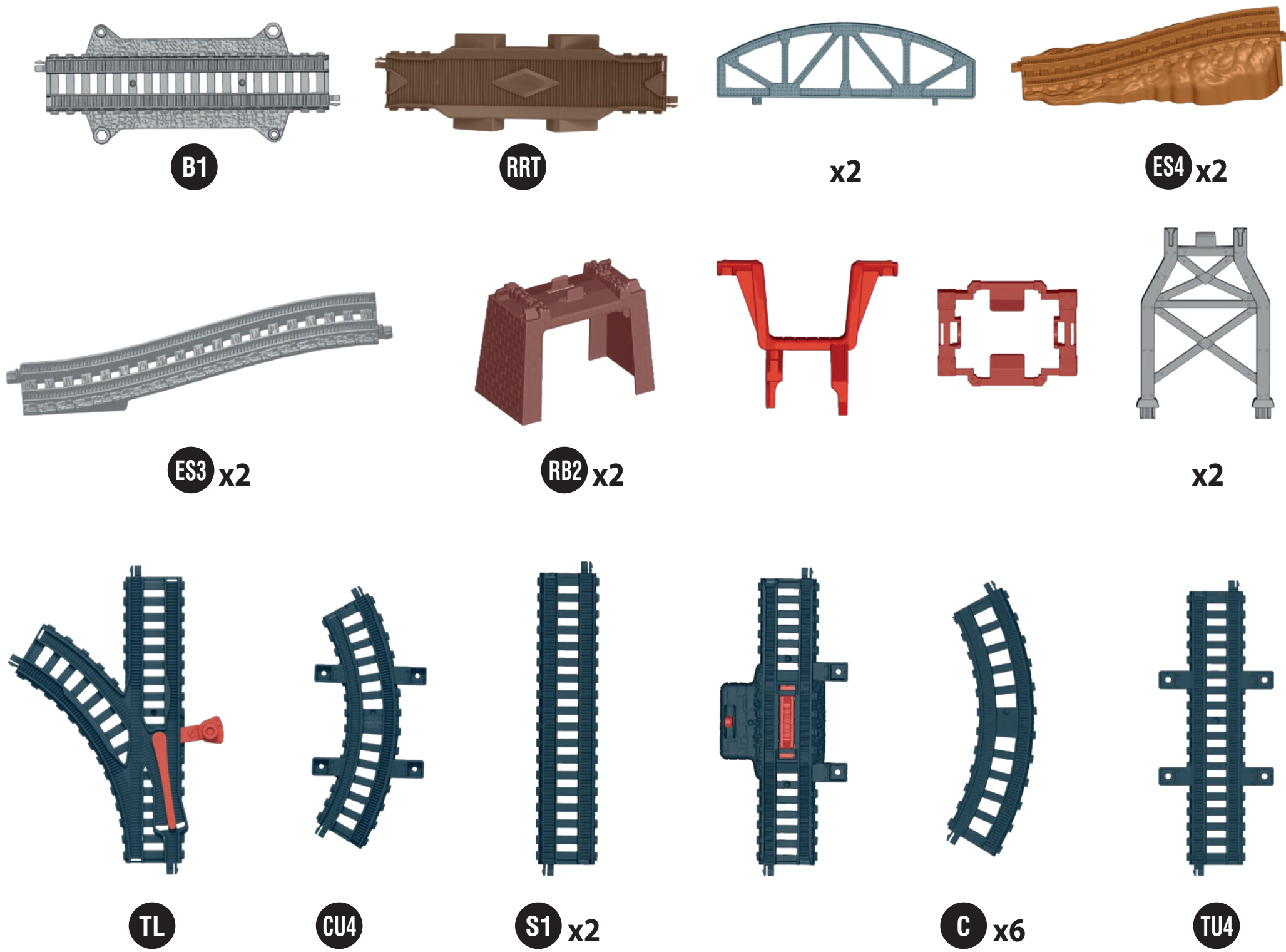
UNITED STATES
Fisher-Price, Inc., 636 Girard Avenue, East Aurora, NY 14052.
Consumer Services: 1-800-432-5437.
CANADA
Mattel Canada Inc., 6155 Freemont Blvd., Mississauga, Ontario
L5R 3W2, Consumer Services/Service à la clientèle : 1-800-432-5437, www.service.mattel.com.
GREAT BRITAIN
Mattel U.K. Limited, The Porter Building, 1 Brunel Way,
Slough SL1 1FD, UK, www.service.mattel.com/uk.
NETHERLAND
Mattel Europa B.V., Gondel 1, 1186 MJ Amstelveen, Nederland.
AUSTRALIA
Mattel Australia Pty. Ltd., 658 Church Street, Locked Bag #870, Richmond, Victoria 3121 Australia. Consumer
Advisory Service 1300 135 312.
NEW ZEALAND
16-18 William Pickering Drive, Albany 1331, Auckland.
SOUTH AFRICA
Mattel South Africa (PTY) LTD, Office 102 I3, 30 Melrose Boulevard, Johannesburg 2196.



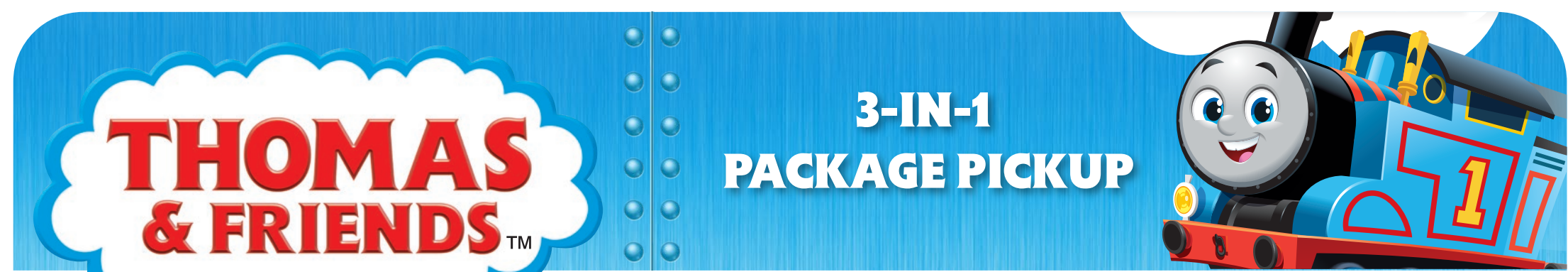
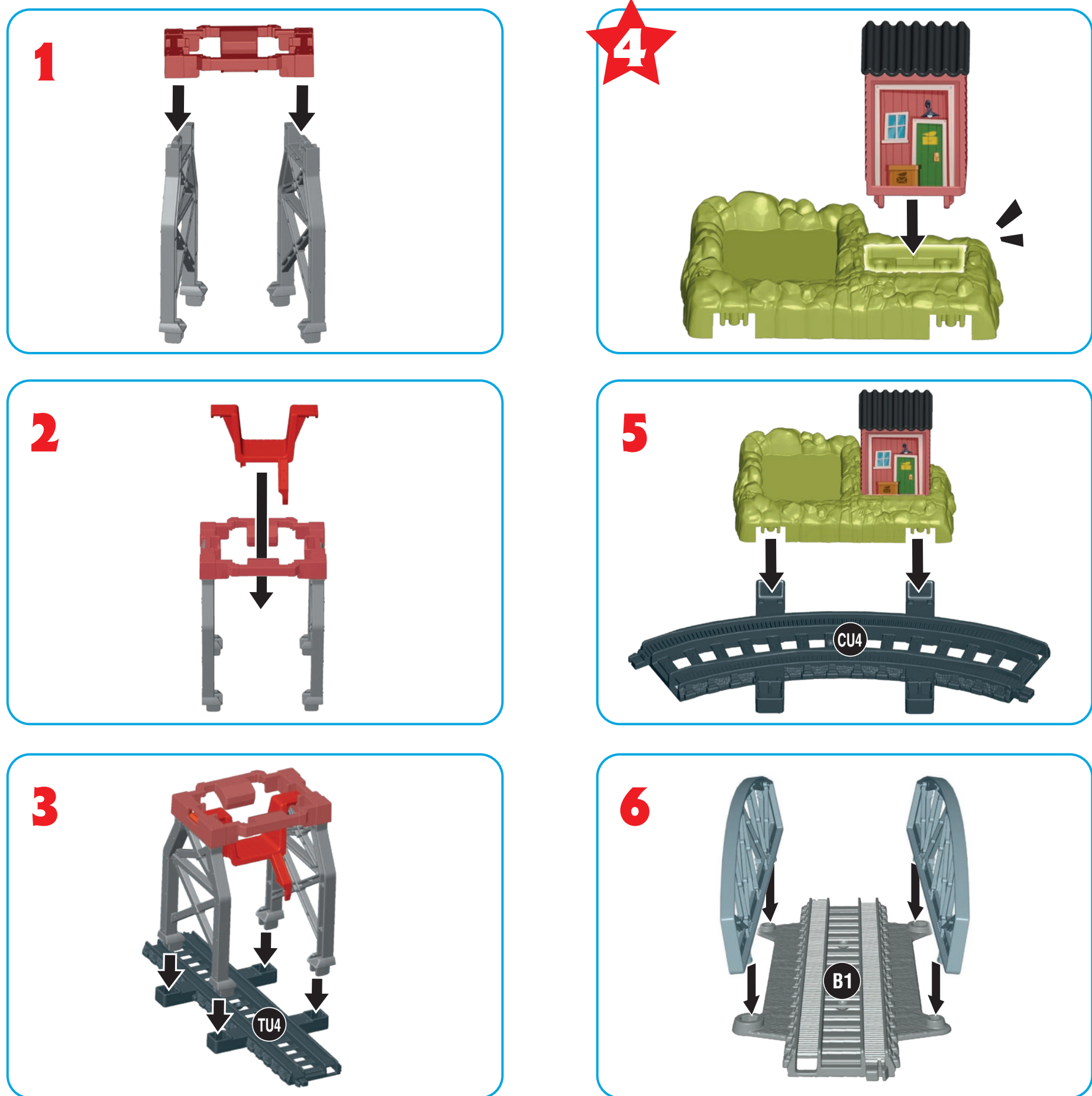
Based on the Railway Series by The Reverend W. Awdry.
©2021 Gullane (Thomas) Limited. Thomas the Tank Engine & Friends™ and Thomas & Friends™ are trademarks of Gullane (Thomas) Limited.
©2021 HIT Entertainment Limited. HIT and the HIT logo are trademarks of HIT Entertainment Limited.
©2021 Mattel. "and" designate U.S. trademarks of Mattel, except as noted. **PRINTED IN CHINA.**
Mattel East Asia Ltd., Room 503-09, North Tower, World Finance Centre, Harbour City, Tsimshatsui, HK, China.
Tel.: (852) 3185-6500.



What's Included



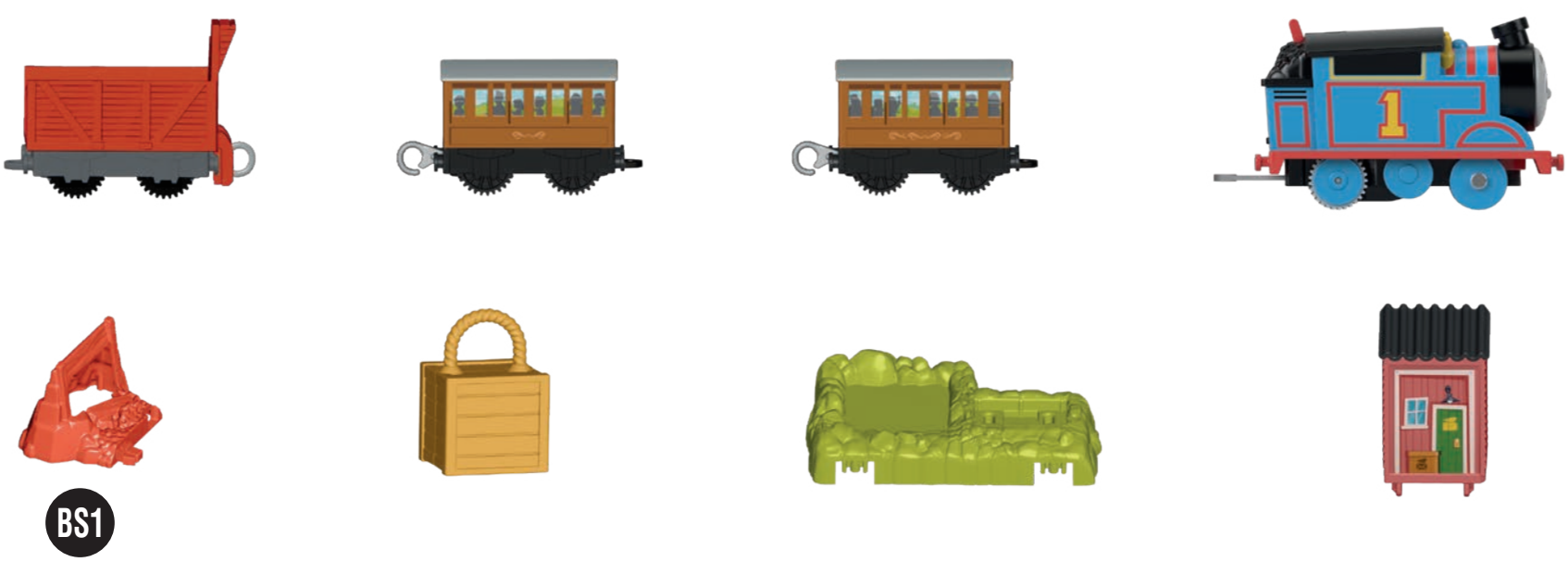
Assembly



INSTRUCTIONS

Keep these instructions for future reference as they contain important information.

What's Included



Helpful Hints



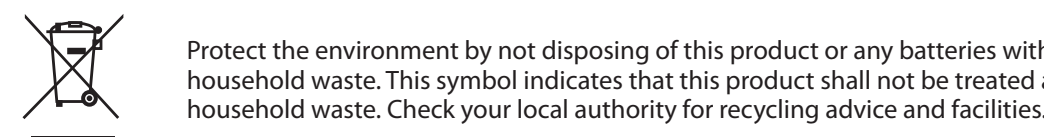
Some engines may not work on this track set. Assembly steps marked with a star indicate a permanent assembly. Once these parts are assembled, they cannot be taken apart.

Battery Information

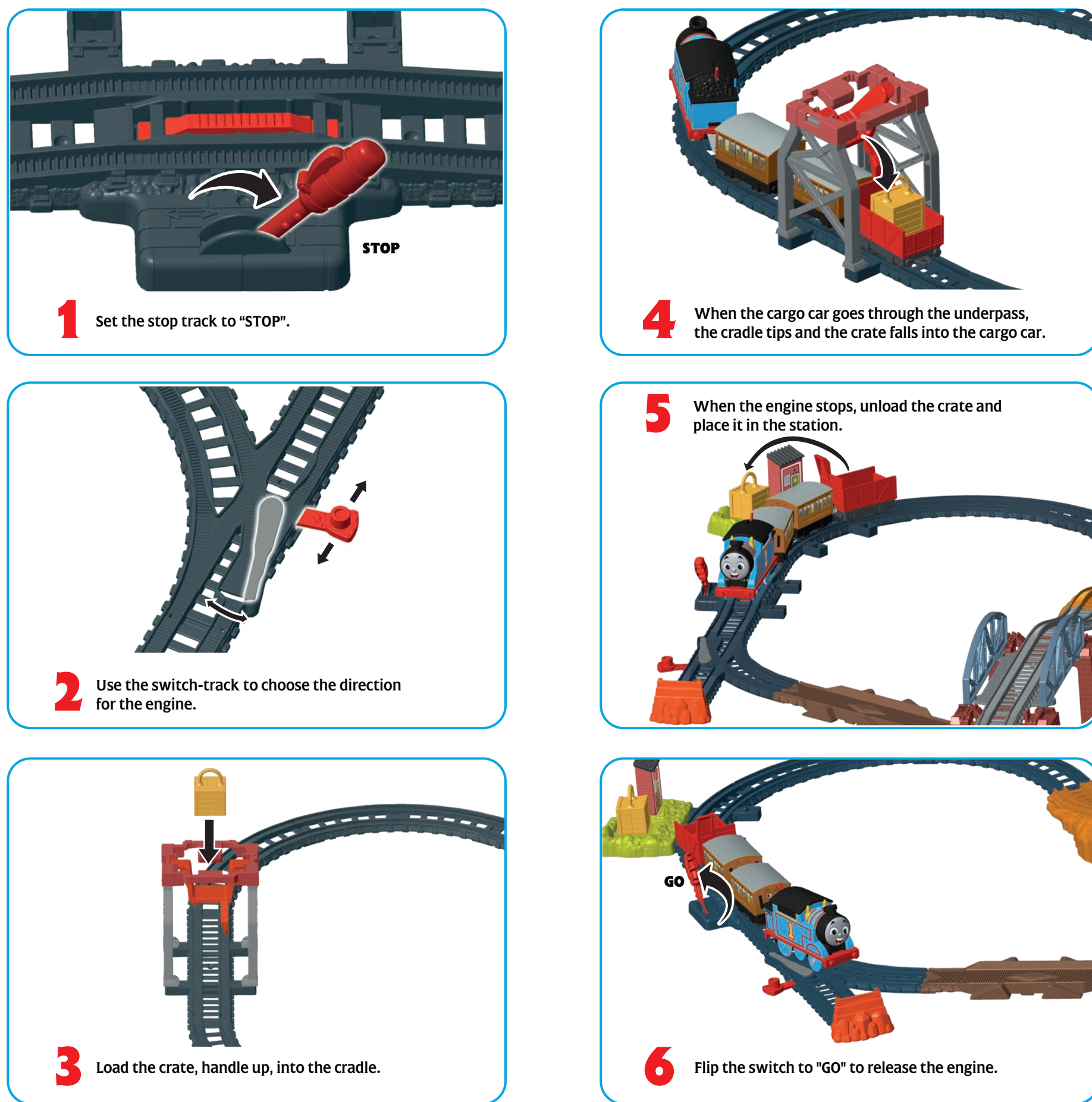
REQUIRES:
• Phillips screwdriver (not included) for battery installation.
• Two AAA (LR03) alkaline batteries (not included).

BATTERY INSTALLATION
Access the battery compartment by loosening the screw in the bottom of the engine and separating the top half of the engine from the bottom half of the engine. Insert the batteries as indicated inside the battery compartment. Re-assemble the halves of the engine and tighten the screw. If the engine begins to malfunction, first check battery installation. You may need to reset the electronics by removing the batteries and reinstalling them. If the engine continues to malfunction or no longer operates, it's time to replace the batteries with fresh batteries. For longer life, use alkaline batteries.

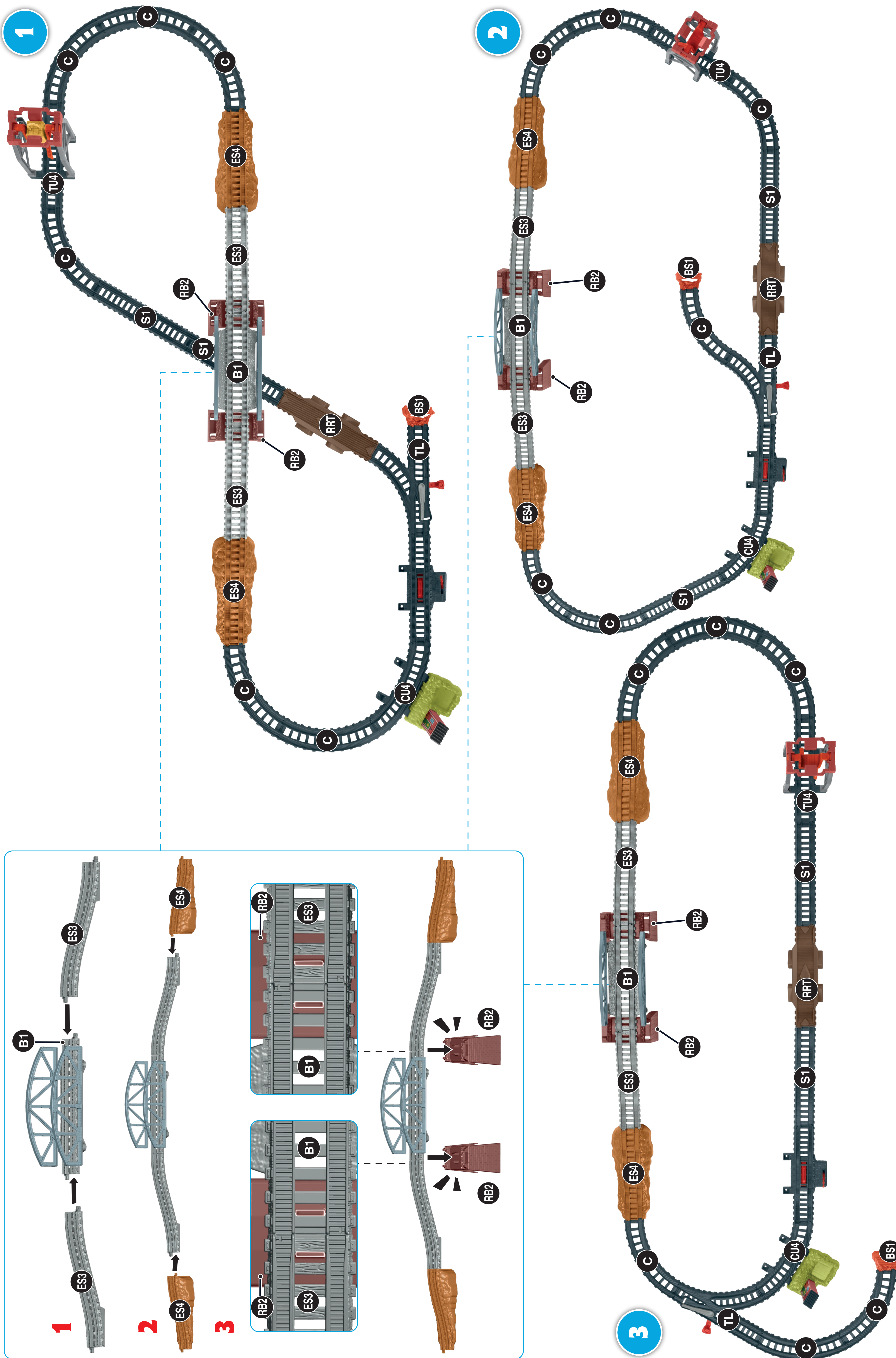
BATTERY SAFETY INFORMATION
In exceptional circumstances batteries may leak fluids that can cause a chemical burn injury or ruin your product. To avoid battery leakage:
• Non-rechargeable batteries are not to be recharged.
• Rechargeable batteries are to be removed from the product before being charged.
• Rechargeable batteries are only to be charged under adult supervision.
• Do not mix alkaline, standard (carbon-zinc), or rechargeable batteries.
• Do not mix old and new batteries.
• Only batteries of the same or equivalent type as recommended are to be used.
• Batteries are to be inserted with the correct polarity (+ and -).
• Exhausted batteries are to be removed from the product.
• The supply terminals are not to be short-circuited.
• Dispose of batteries safely.
• Do not dispose of this product in a fire. The batteries inside may explode or leak.



How To Play



Track Layouts



Side 2

Folding method:		Side 1		Side 2	
Back	Cover	7	8	Back	Cover
3	4	9	10	3	4
5	6	11	12	5	6

Item No : HGX64-0970
Size : 1102/71996-00M
Size : 23.4" x 33.1"
Paper : 70gsm FSC mix woodfree paper
Color : 4C
Date : 8/3/2021 (Emma Wei)