

fisher-price®



HTW98

Ultimate Playhouse™



Where great minds think like kids™

Since 1961, early childhood development experts at the Fisher-Price™ Play Lab have watched and learned from real-life fun experts (aka babies & big kids) to help us design toys and nursery gear that help babies learn and grow in the most natural way. From bright colors that delight their eyes and textures made for squishing, to friends that keep tummy time exciting, Fisher-Price® toys are made just right for your newborn.

Before You Begin



Keep these instructions for future reference as they contain important information.

Clean with a damp cloth. Do not immerse.



Adult assembly is required (because we needed to fit this toy in the box).



40

Plan on about 40 minutes for assembly.



You'll need a Phillips screwdriver (not included) for assembly and battery installation. Do not over-tighten the screws.

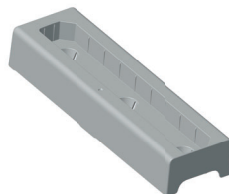
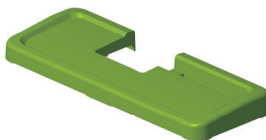
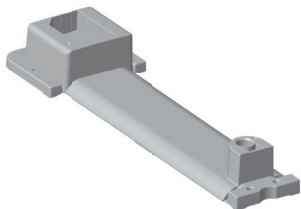
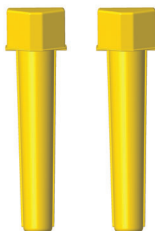
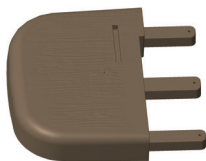
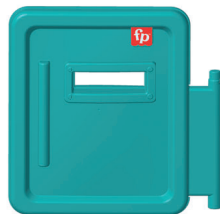


x3

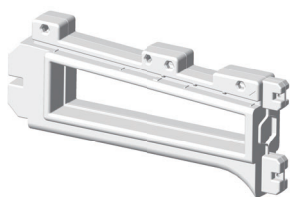
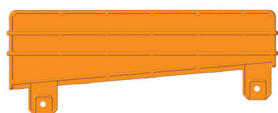
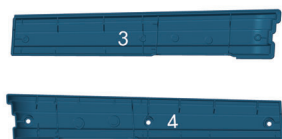
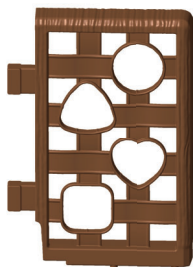
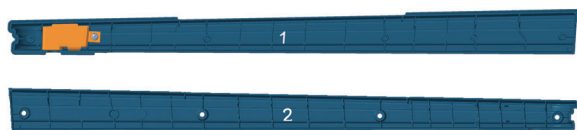
Three AA (LR6) **alkaline** batteries are required (not included).

Alkaline batteries make this toy work longer before you need to change them. When sound or lights become faint or stop, it's time for an adult to change the batteries.

Assembled Parts



Assembled Parts



Assembled Parts



x23

M4,5 x 19 mm

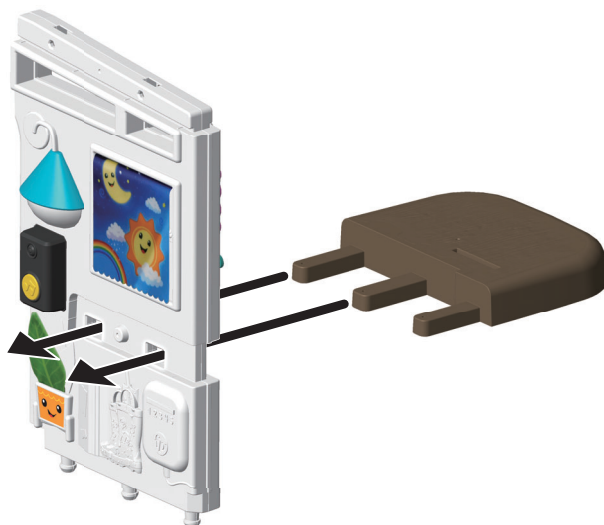


CAUTION:

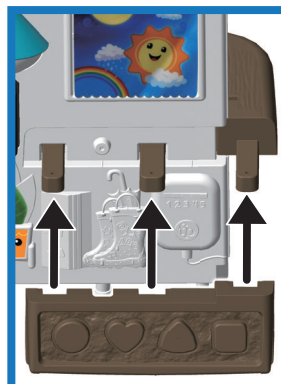
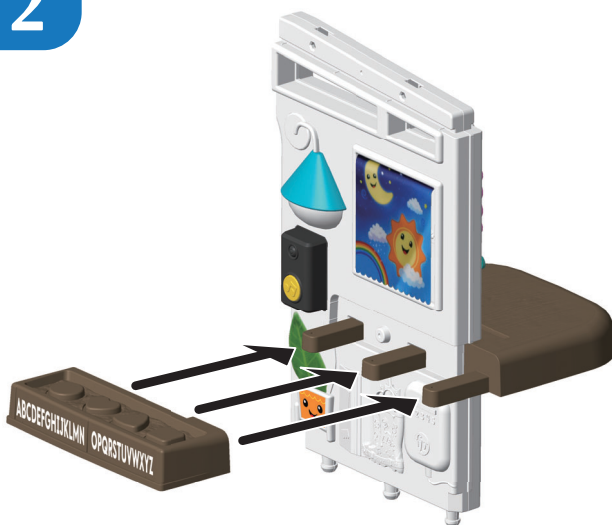
This package contains
small parts. For adult
assembly only.

Assembly

1



2



Match the openings on the planter box to the three supports on the table.

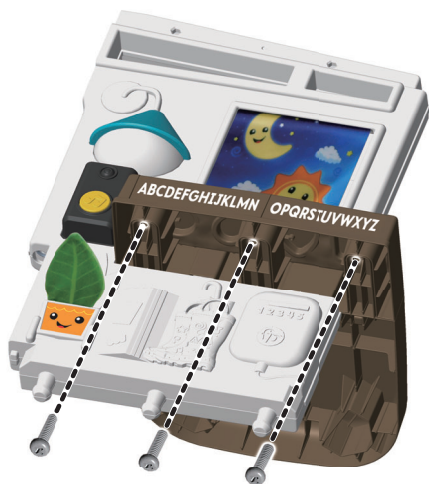
Assembly

3



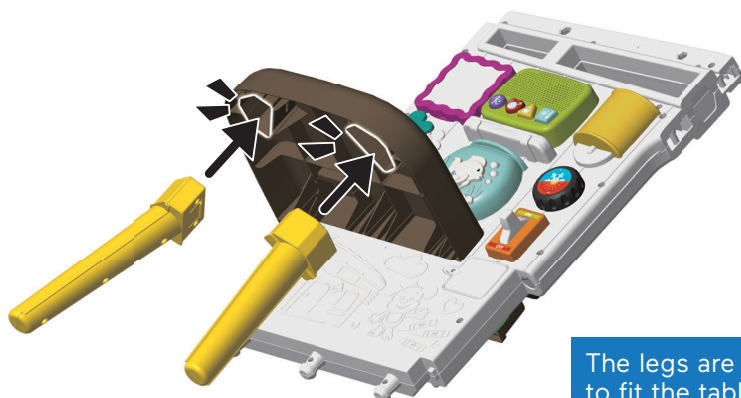
Press the planter box and the table together until the edges are flush. These parts do **not** snap together.

4



Assembly

5



The legs are designed to fit the table one way. If a leg doesn't seem to fit, turn it around and try again.

6



The wall is designed to fit into the base one way. If the wall doesn't seem to fit, turn it around and try again.

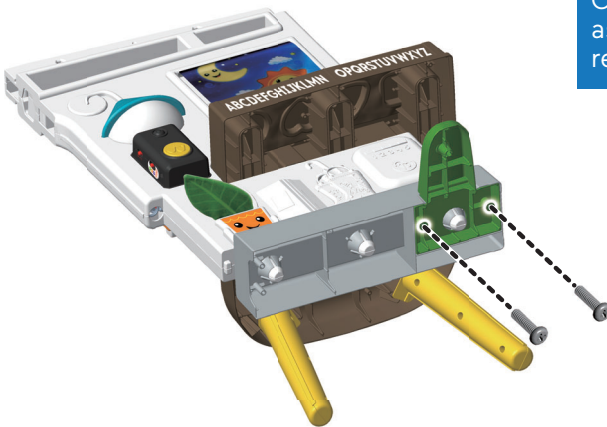
Assembly

7



8

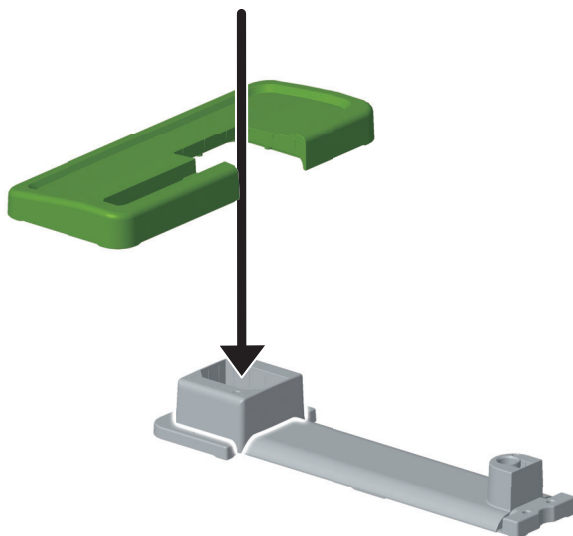
Bottom View



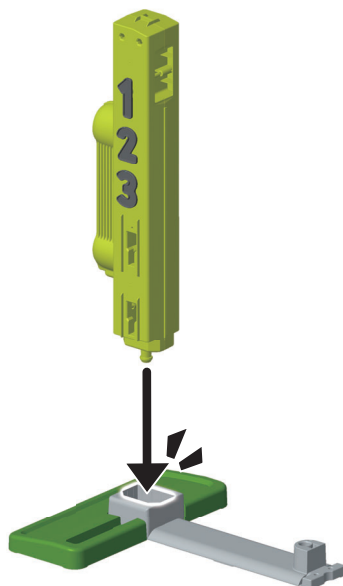
Carefully lay the assembly down to reveal the bottom.

Assembly

9



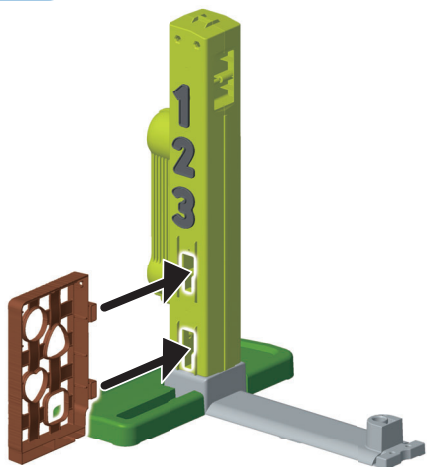
10



The support beam is designed to fit one way. If it doesn't seem to fit, turn it around and try again.

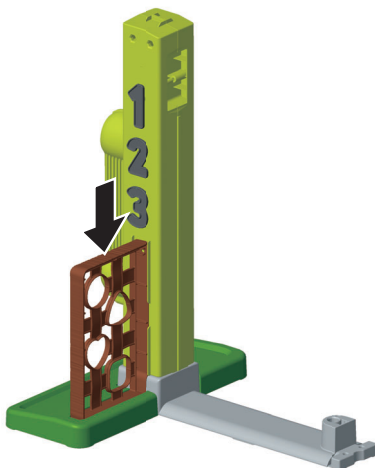
Assembly

11

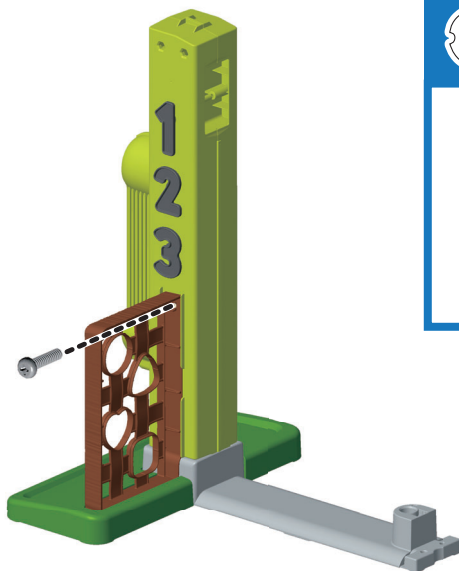


12

These parts do **not** snap together.



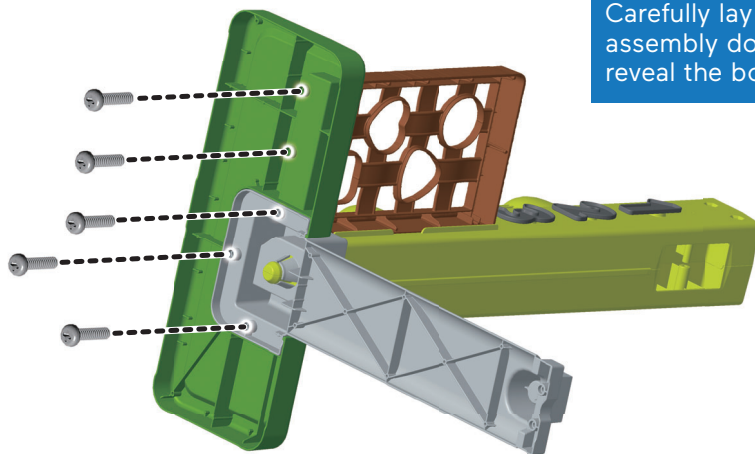
13



Assembly

14

Bottom View



x5

Carefully lay the assembly down to reveal the bottom.

15



Carefully return the assembly to upright position.

Assembly

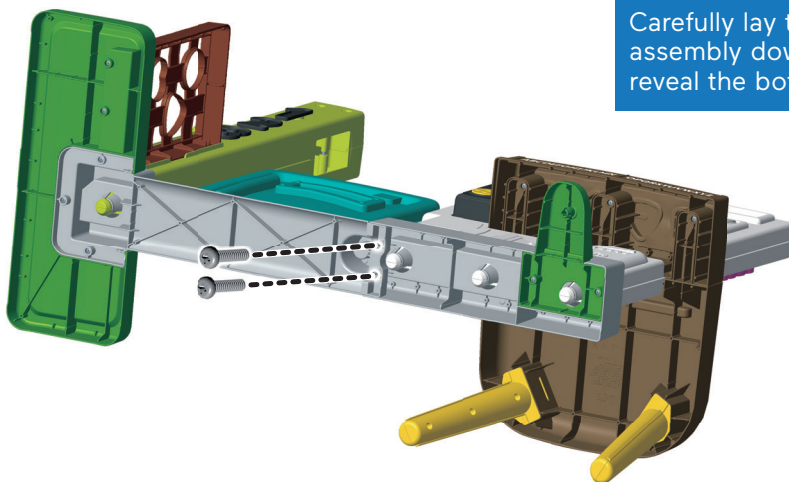
16



Carefully lower the wall assembly onto the door hinge and the threshold. Make sure the door swings properly. If it doesn't, lift the wall assembly and try again.

17

Bottom View



Carefully lay the assembly down to reveal the bottom.

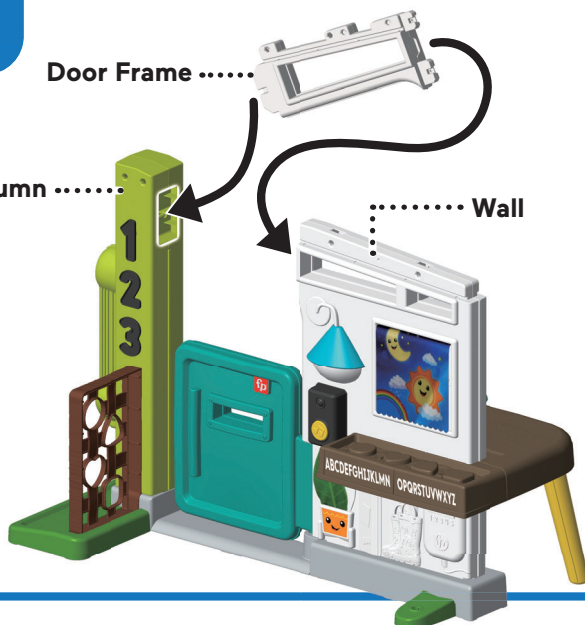
Assembly

18

Door Frame

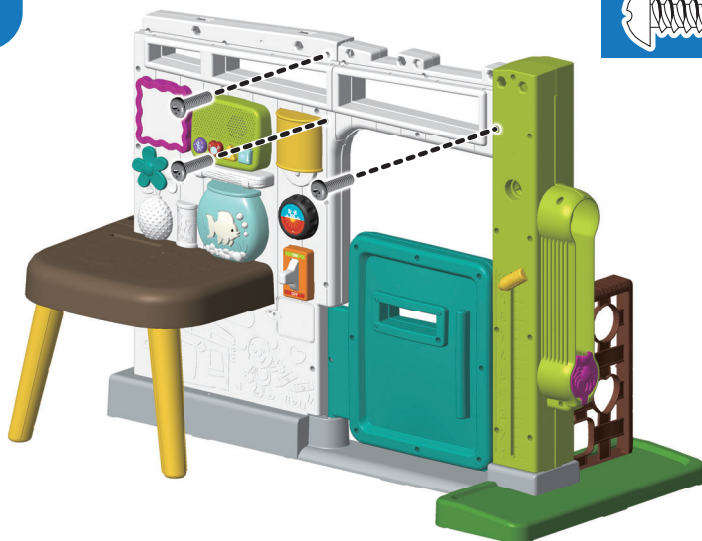
Column

..... Wall



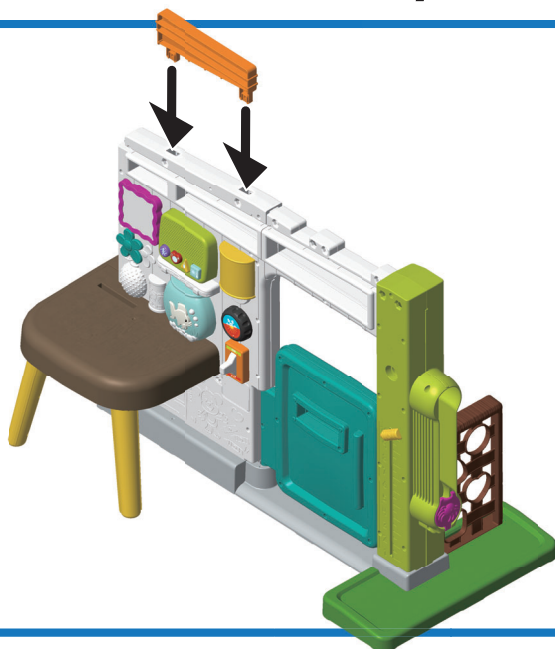
Carefully pull the wall and the column apart. Align the triangle shapes on the door frame and wall.

19

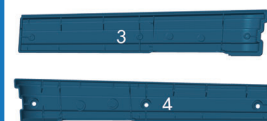
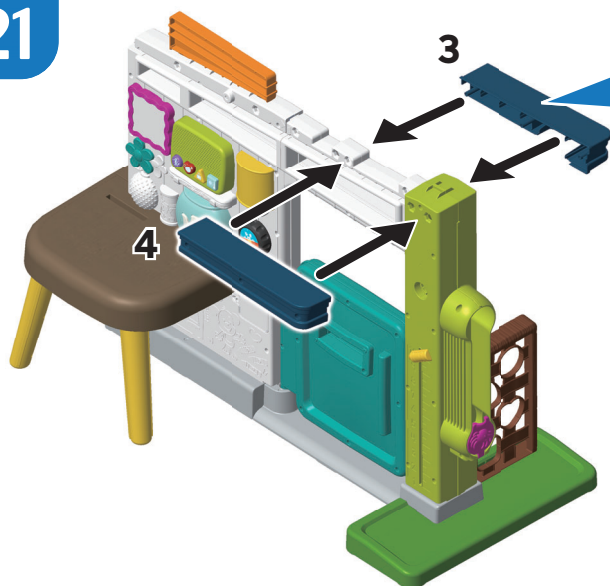


Assembly

20



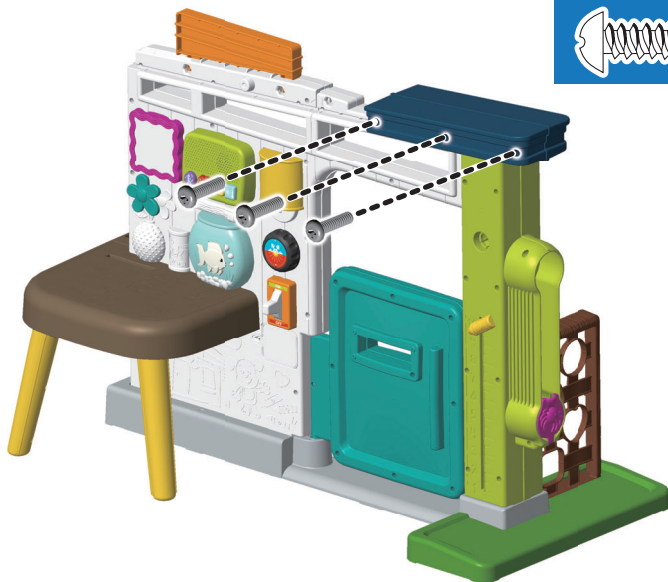
21



Locate the number inside the small roof parts and press together until the edges are flush.

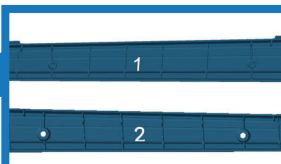
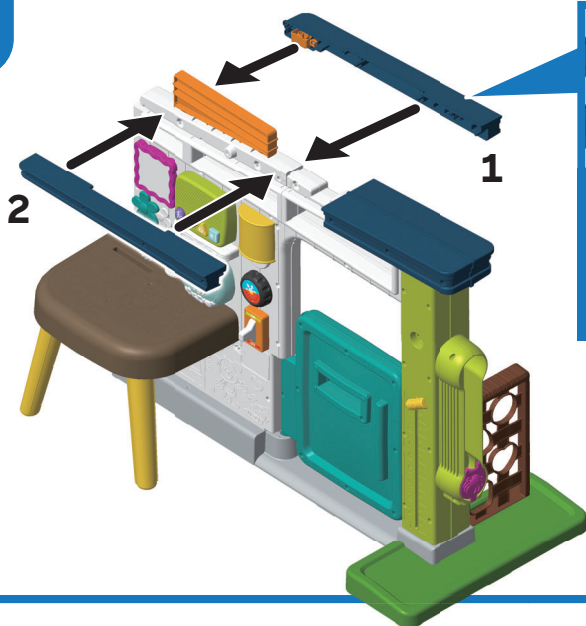
Assembly

22



x3

23



Locate the number on the inside of the large roof parts and press together until the edges are flush.

Assembly

24

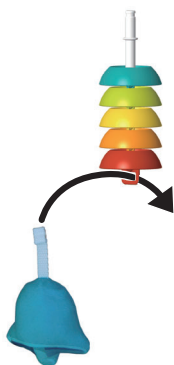


25



Assembly

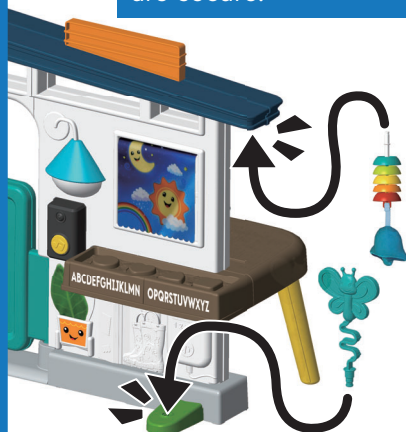
26



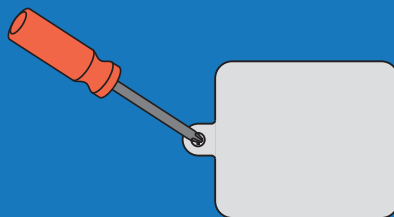
Fit the strap on the bell into the opening at the bottom of the windchime. Make sure the tab on the end of the strap forms a "T" on the other side.

27

You may need to rotate the butterfly toy in order to "snap" it. Pull on both toys to be sure they are secure.

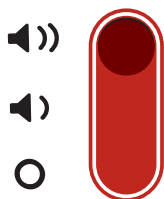
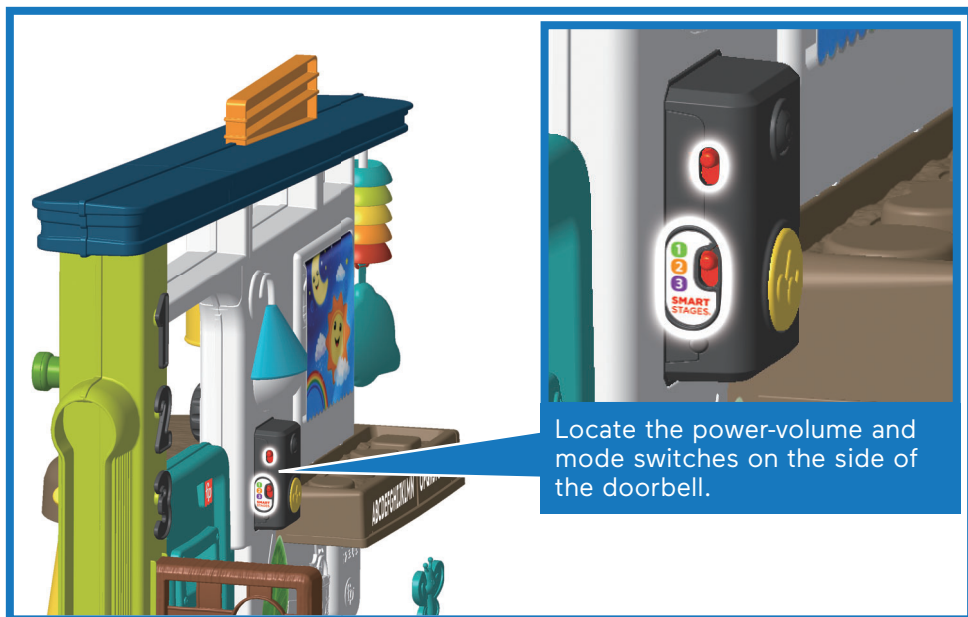





Install Batteries



Locate the battery door under the light switch. Loosen the screw in the battery door and remove the door. Insert three, new AA (LR6) **alkaline** batteries. Make sure you insert the batteries correctly! Replace the battery door and tighten the screw.

Power-Volume and Mode Switches



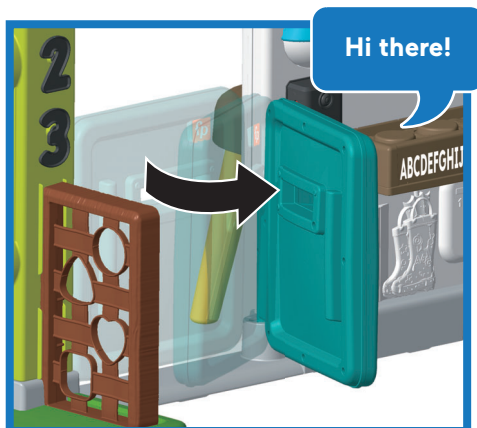
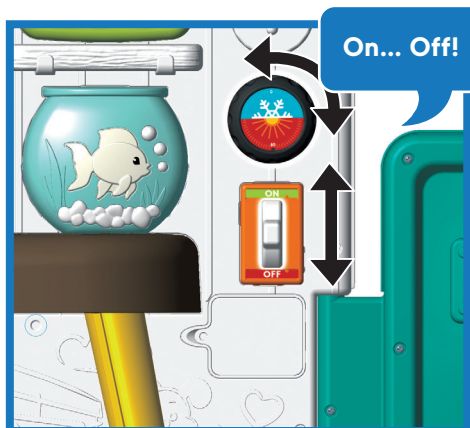
Locate the power-volume and mode switches on the side of the doorbell. Slide to turn power ON with low volume , ON with high volume  or OFF .

You may need to reset the electronics if this toy begins to operate erratically. Slide the power-volume switch off and back on.



- 1 Explore** – Enjoy fun sounds, songs, first words and phrases that introduce opposites, colors, shapes, and the alphabet!
- 2 Encourage** – Along with sounds, phrases and songs about colors, numbers, and greetings listen for a fun prompt followed by a reward!
- 3 Pretend** – Listen to engaging songs, sounds, and phrases that inspire imaginative play!

Welcome home!



- Press to cycle through different types of dance music!
- Press again and again to cycle through different beats and music.
- Get all the news baby needs to know with the "Podcast" button.
- Listen to weather related sounds and phrases.



Discover the World of **Laugh & Learn**™



Each sold separately
and subject to availability.

Battery Safety Information

In exceptional circumstances, batteries may leak fluids that can cause a chemical burn injury or ruin your product. To avoid battery leakage:

- Do not mix old and new batteries or batteries of different types: alkaline, standard (carbon-zinc) or rechargeable.
- Insert batteries as indicated inside the battery compartment (+ and -).
- Remove batteries during long periods of non-use. Always remove exhausted batteries from the product. Dispose of batteries safely. Do not dispose of this product in a fire. The batteries inside may explode or leak.
- Never short-circuit the battery terminals.
- Use only batteries of the same or equivalent type, as recommended.
- Do not charge non-rechargeable batteries.
- Remove rechargeable batteries from the product before charging.
- If removable, rechargeable batteries are used, they are only to be charged under adult supervision.

FCC STATEMENT (UNITED STATES ONLY)

This equipment has been tested and found to comply with the limits for a Class B digital device, pursuant to Part 15 of the FCC rules. These limits are designed to provide reasonable protection against harmful interference in a residential installation. This equipment generates uses and can radiate radio frequency energy and, if not installed and used in accordance with the instructions, may cause harmful interference to radio communications. However, there is no guarantee that interference will not occur in a particular installation. If this equipment does cause harmful interference to radio or television reception, which can be determined by turning the equipment off and on, the user is encouraged to try to correct the interference by one or more of the following measures:

- Reorient or relocate the receiving antenna.
- Increase the separation between the equipment and receiver.
- Consult the dealer or an experienced radio/TV technician for help.

NOTE: Changes or modifications not expressly approved by the manufacturer responsible for compliance could void the user's authority to operate the equipment.

This device complies with Part 15 of the FCC Rules. Operation is subject to the following two conditions: (1) This device may not cause harmful interference, and (2) this device must accept any interference received, including interference that may cause undesired operation.

CAN ICES-3 (B)/NMB-3 (B)

Operation is subject to the following two conditions: (1) this device may not cause interference, and (2) this device must accept any interference, including interference that may cause undesired operation of the device.

L'utilisation de ce dispositif est autorisée seulement aux conditions suivantes : (1) il ne doit pas produire de brouillage et (2) il doit pouvoir tolérer tout brouillage radioélectrique reçu, même si ce brouillage est susceptible de compromettre son fonctionnement.



Protect the environment by not disposing of this product or any batteries with household waste. This symbol indicates that this product shall not be treated as household waste. Check your local authority for recycling advice and facilities.



Mattel Europa B.V., Gondel 1, 1186 MJ Amstelveen, Nederland.

UNITED STATES

Fisher-Price, Inc., 636 Girard Avenue, East Aurora, NY 14052.
Consumer Services: 1-800-432-5437.

CANADA

Mattel Canada Inc., 6155 Freemont Blvd., Mississauga,
Ontario L5R 3W2 Consumer Services/Service à la clientèle : 1-800-432-5437.
www.service.mattel.com.

GREAT BRITAIN

Mattel U.K. Limited, The Porter Building, 1 Brunel Way, Slough SL1 1FQ, UK.
www.service.mattel.com/uk.

AUSTRALIA

Mattel Australia Pty. Ltd., 658 Church Street, Locked Bag #870, Richmond,
Victoria 3121 Australia. Consumer Advisory Service 1300 135 312.

NEW ZEALAND

16-18 William Pickering Drive, Albany 1331, Auckland.

SOUTH AFRICA

Mattel South Africa (PTY) LTD, Office 102 I3, 30 Melrose Boulevard,
Johannesburg 2196.