

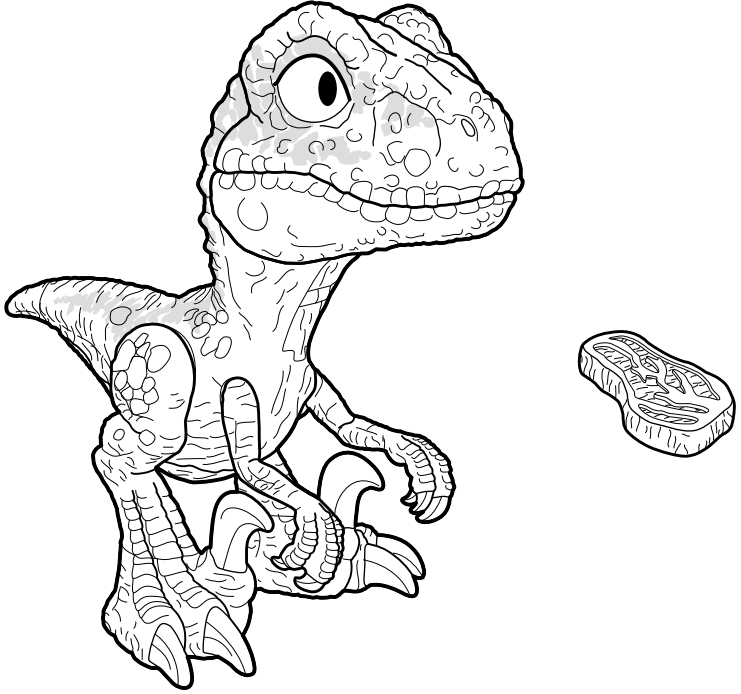


PETUNJUK INSTRUCTIONS

JURASSIC WORLD

Harap simpan petunjuk ini untuk referensi di waktu mendatang karena berisi informasi penting.
Please keep these instructions for future reference as they contain important information.

ISI • CONTENTS



©2023 Mattel. ® and ™ designate U.S. trademarks of Mattel, except as noted. PT Mattel Trading Indonesia Pondok Indah Office Tower 2, 5th Floor – Suite 502| Jl. Sultan Iskandar Muda Kav. V-TA, Pondok Indah, Jakarta 12310, Indonesia.



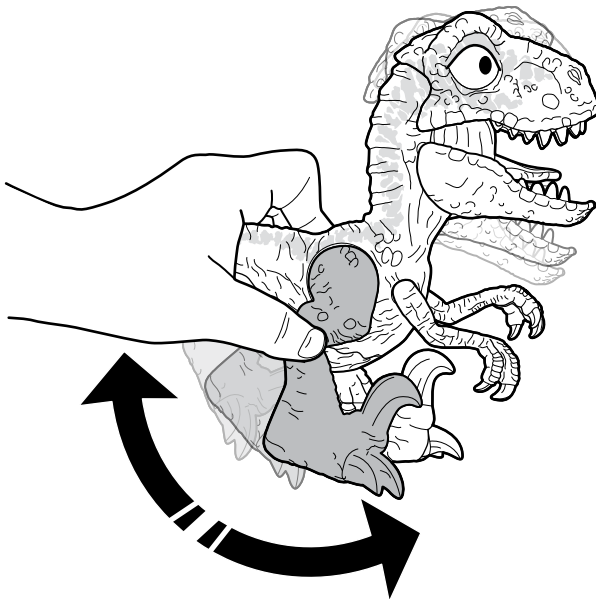
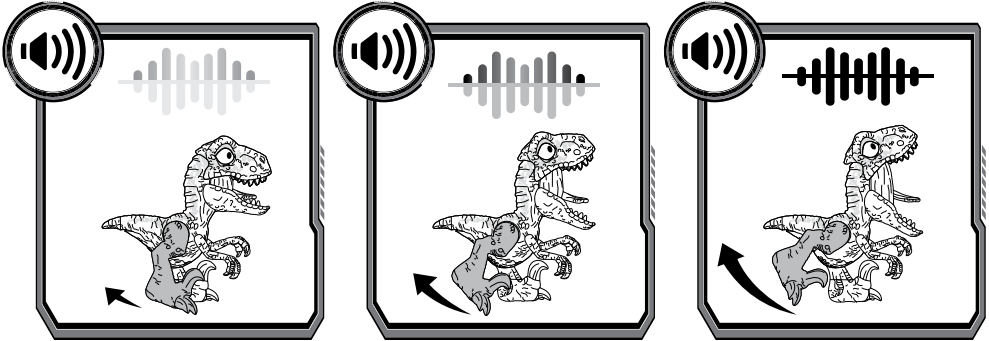
Asst. HVB43
HVB44_LT70
1103083061-2XT

© Universal City Studios LLC and Amblin Entertainment, Inc. All Rights Reserved.



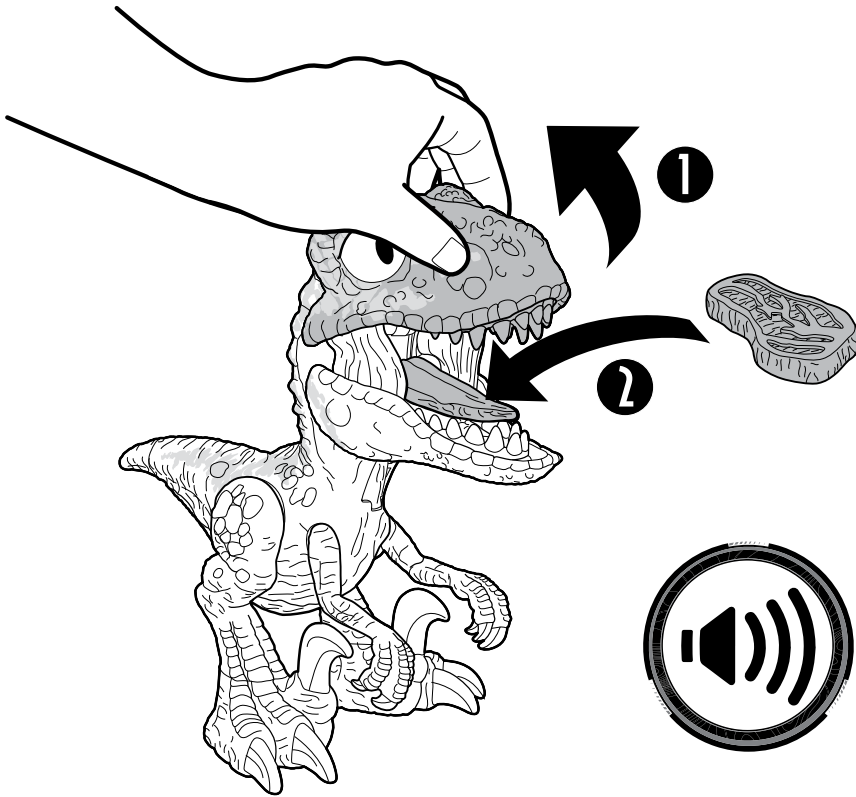
1: CARA BERMAIN • TO PLAY

- A.** Angkat kaki maju dan mundur untuk variasi suara auman!
Lift the leg back and forth to vary the sounds of the roars!



CATATAN: Dinosaurus akan berhenti mengaum jika kakinya tertahan pada posisi yang sama dalam beberapa saat. Letakkan kaki sebelum auman berikutnya.
NOTE: The dinosaur will stop roaring if the leg is held in the same position for a while. Set down the leg before the next roar.

- B.** Buka mulut dinosaurus dan beri makan agar terdengar lebih banyak suara mengaum dan suara bersendawa!
Open the dinosaur's mouth and feed for more roaring and burping sounds!

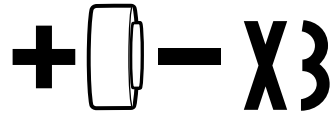
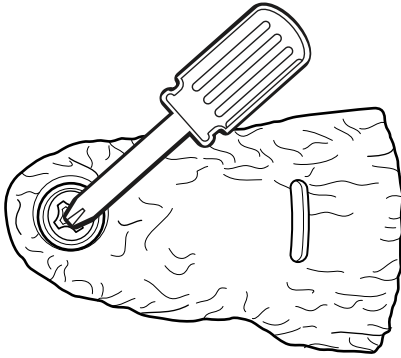


TIPS • TIP

Untuk performa terbaik, letakkan makanan di lidah dinosaurus atau tekan lidah untuk memicu suara.

For best performance, place the food on the dinosaur's tongue or press the tongue to trigger sounds.

2 : PENGGANTIAN BATERAI • BATTERY REPLACEMENT



AG13/LR44 1.5V

- Baterai yang disertakan hanya untuk keperluan demonstrasi.
- Ganti baterai jika suara berubah.
- Buka tutup baterai dengan obeng Phillips (tidak disertakan).
- Lepaskan baterai dan buang dengan aman.
- Pasang 3 baterai AG13/LR44 1.5V baru di dalam kotak baterai.
- Lepaskan penutup baterai dan kencangkan sekrup.
- Untuk daya pakai baterai yang lebih lama, gunakan baterai alkaline.
- Bila terkena sumber elektrostatis, produk dapat mengalami kegagalan fungsi. Untuk melanjutkan pengoperasian normal, keluarkan dan pasang kembali baterai

CATATAN: Produk ini dilengkapi fitur shut-off otomatis yang membantu menghemat daya tahan baterai.

- Batteries included are for demonstration purposes only.
- Replace the batteries if sounds distort.
- Unscrew the battery cover with a Phillips head screwdriver (not included).
- Remove batteries and dispose of them safely.
- Install 3 new AG13/LR44 1.5V button cell batteries in the battery box.
- Replace battery cover and tighten screw.
- For longer life, use alkaline batteries.
- When exposed to an electrostatic source, the product may malfunction. To resume normal operation, remove and reinstall the batteries.

NOTE: This product is equipped with an automatic shut-off feature that helps preserve battery life.