

fisher-price

Little
People®



Easy Assembly Video

HWB37

Spiral Stunt Speedway™

BEFORE YOU BEGIN



Keep these instructions for future reference as they contain important information.



Adult assembly is required (because we need to fit this toy in the box). No tools are required for assembly.



30

Set aside about 30 minutes for assembly.



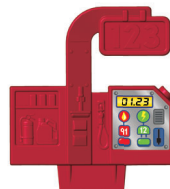
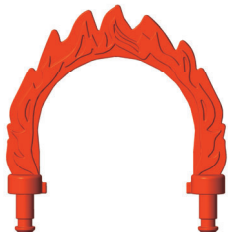
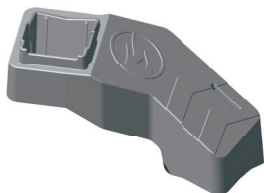
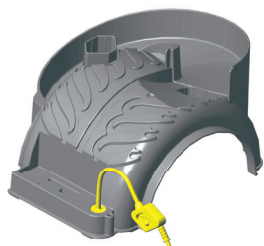
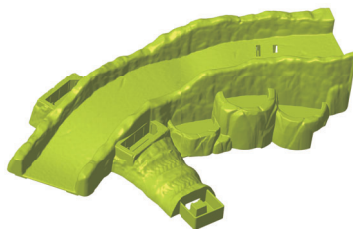
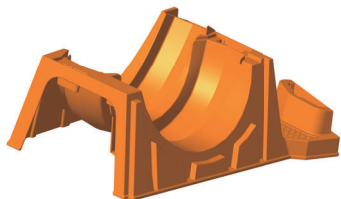
Clean with a damp cloth.

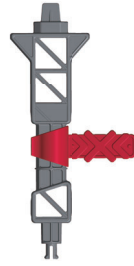
Do not immerse.



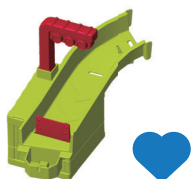
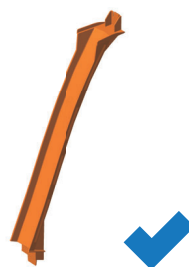
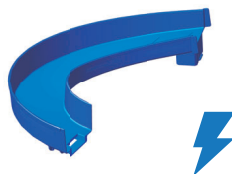
Some track pieces are labeled with shapes! Look for the shapes on the underside of the track when assembling.

ASSEMBLED PARTS



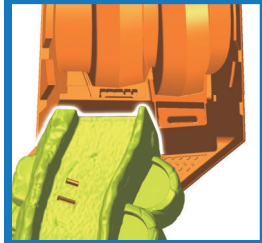
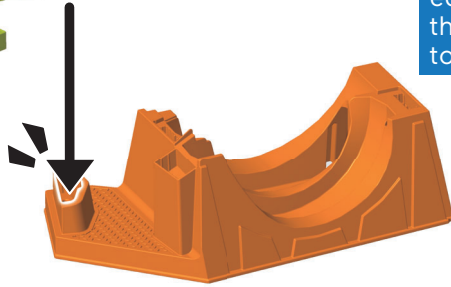
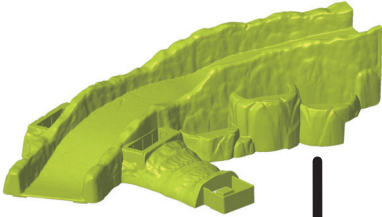


Some track pieces are labeled with a shape.
Look for shapes on the underside of the tracks!



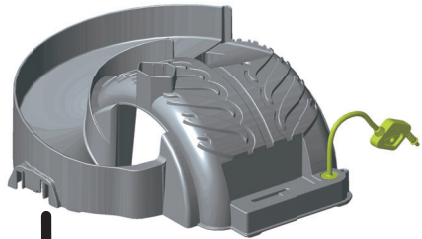
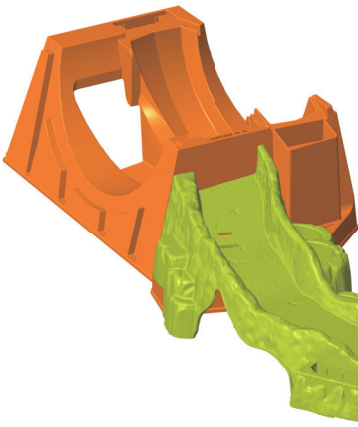
ASSEMBLY

1.

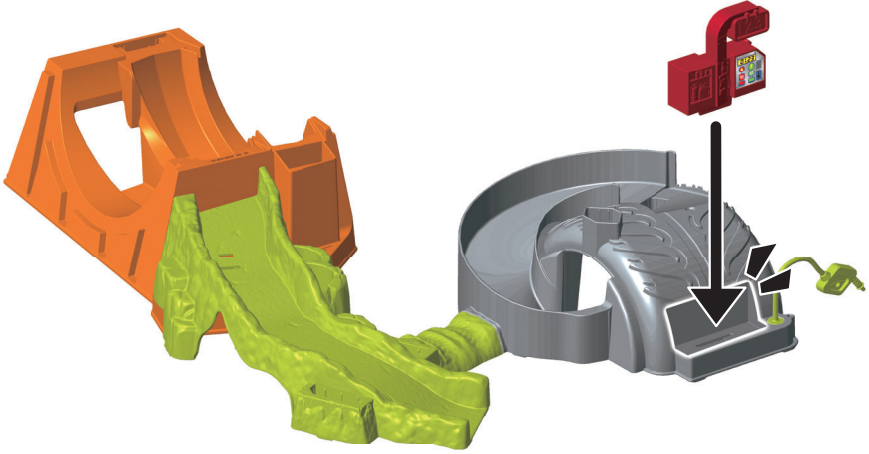


Make sure these edges are flush, then press down to snap.

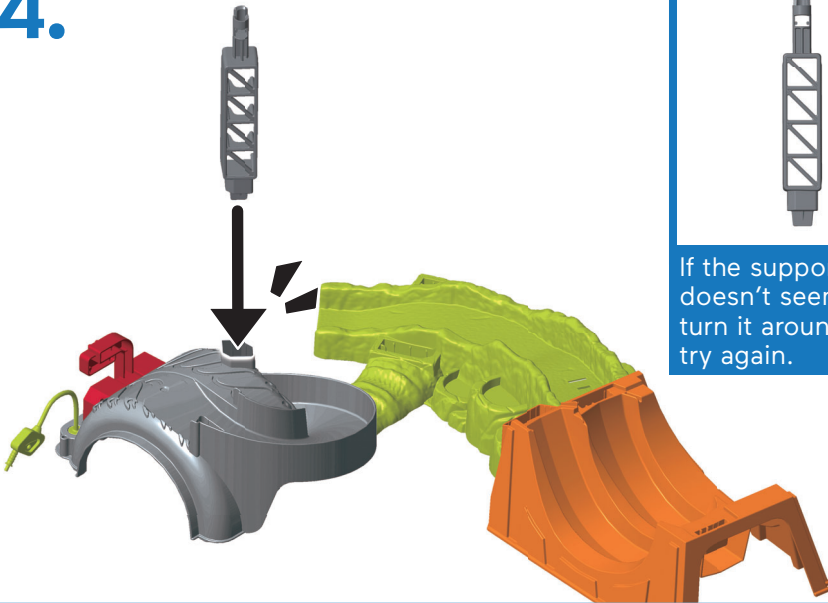
2.



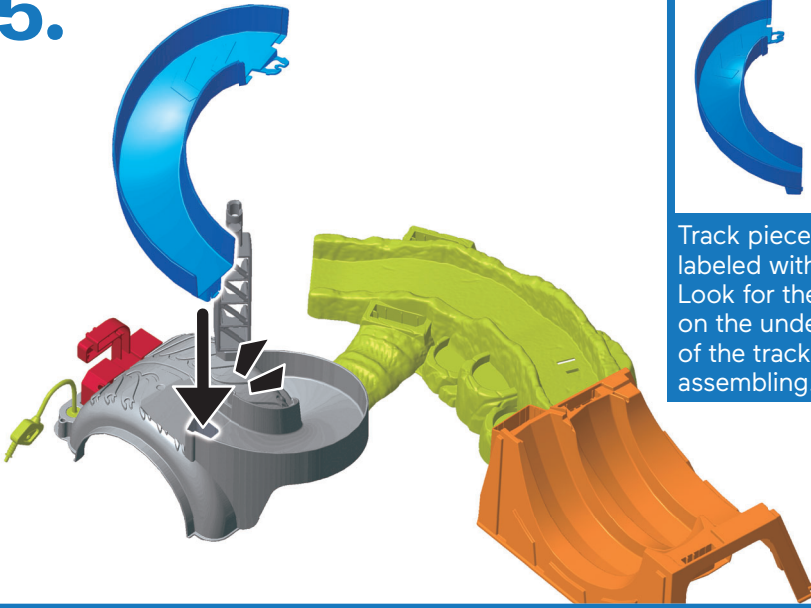
3.



4.

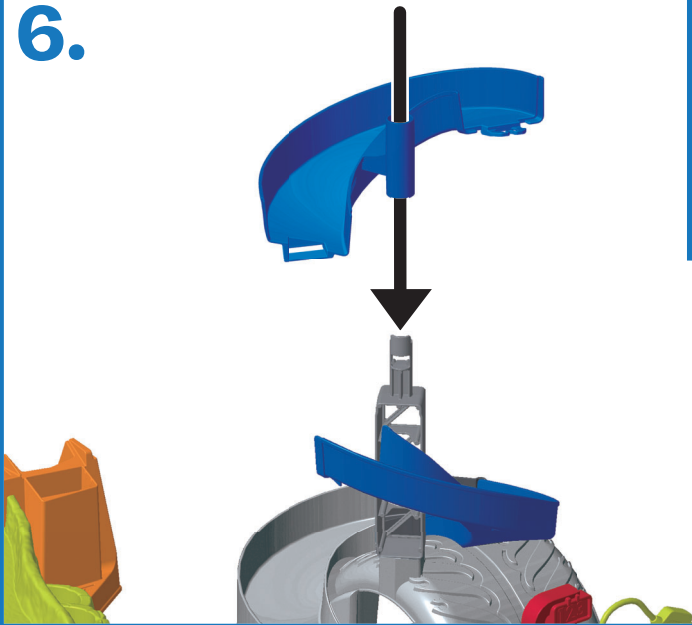


5.



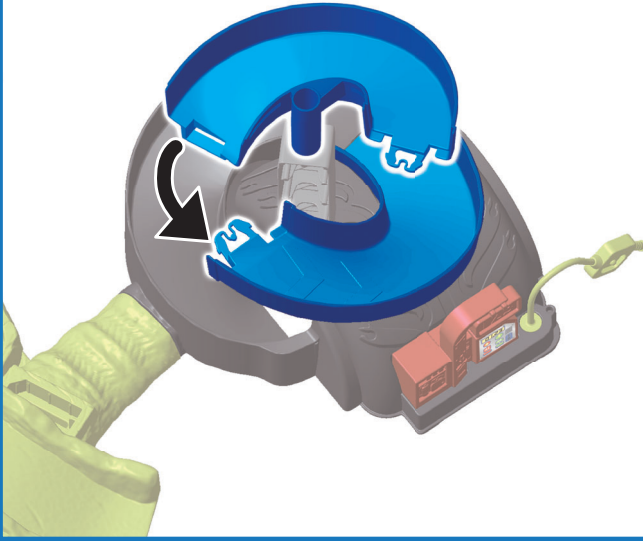
Track pieces are labeled with shapes! Look for the shapes on the underside of the track when assembling.

6.

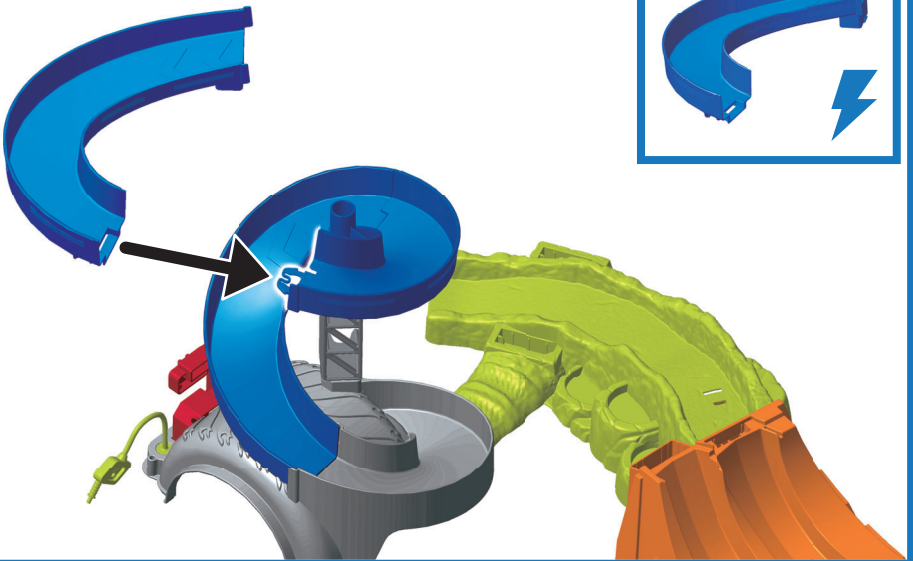
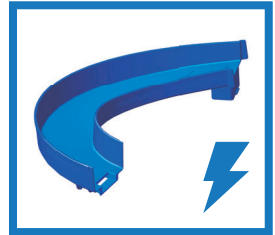


7.

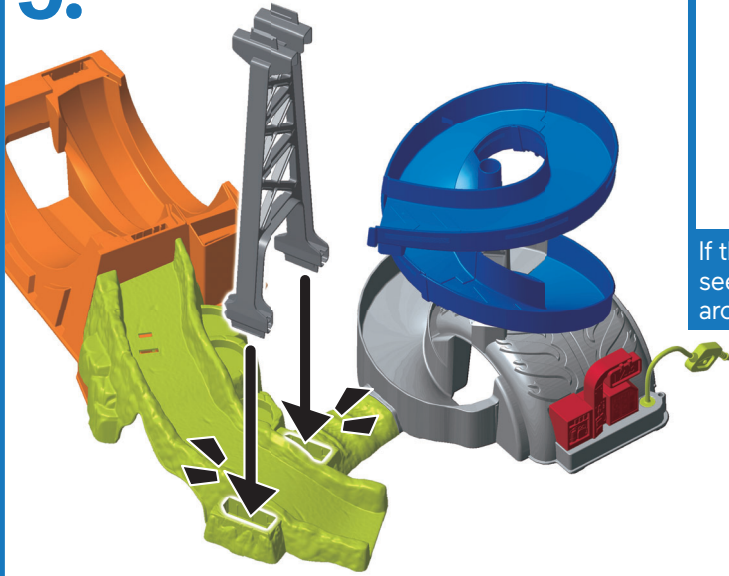
Rotate the half circle track to fit it to the cloud track.



8.

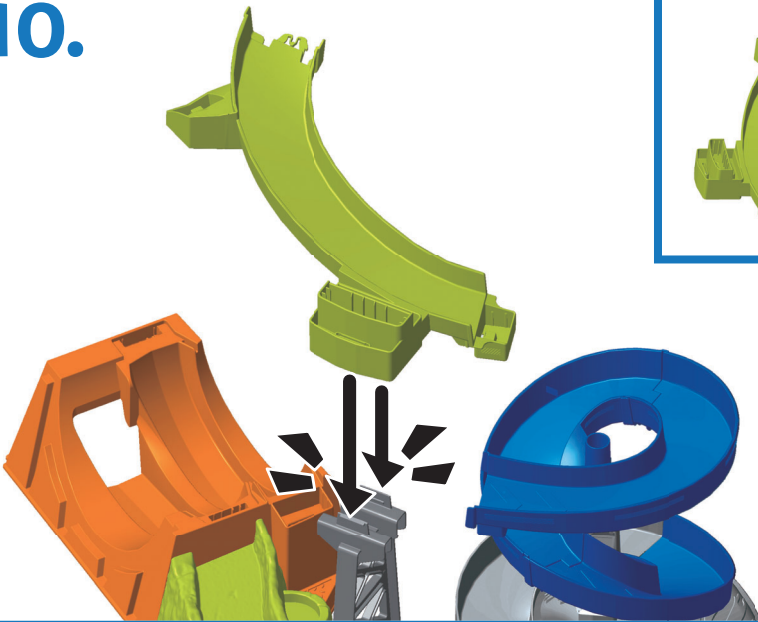


9.



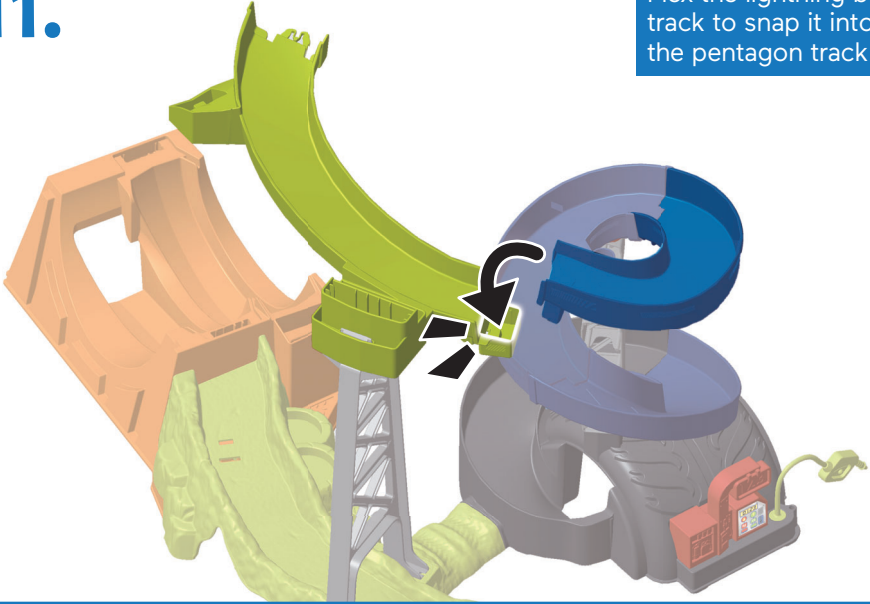
If the riser doesn't seem to fit, turn it around and try again.

10.

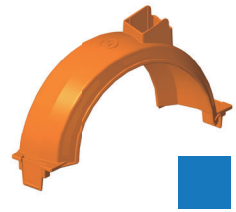
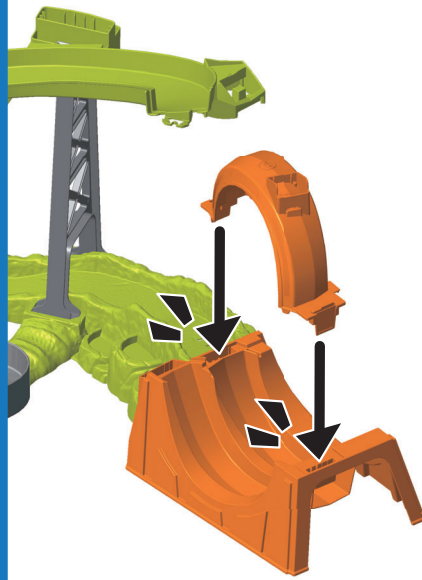


11.

Flex the lightning bolt track to snap it into the pentagon track.

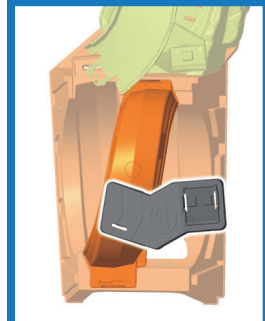
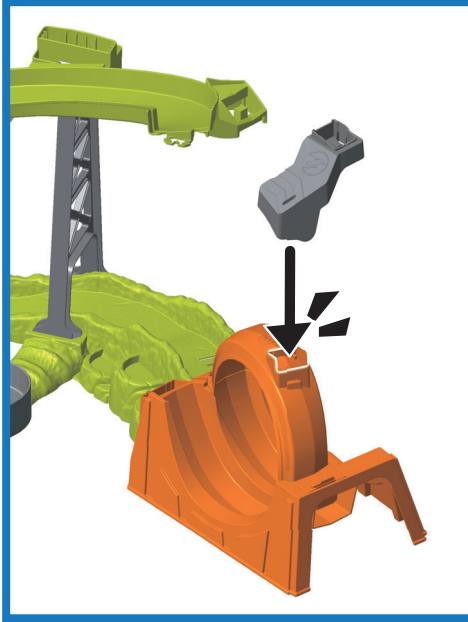


12.



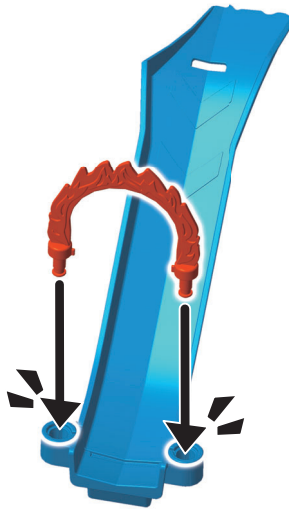
If the square track does not seem to fit, turn it around and try again.

13.

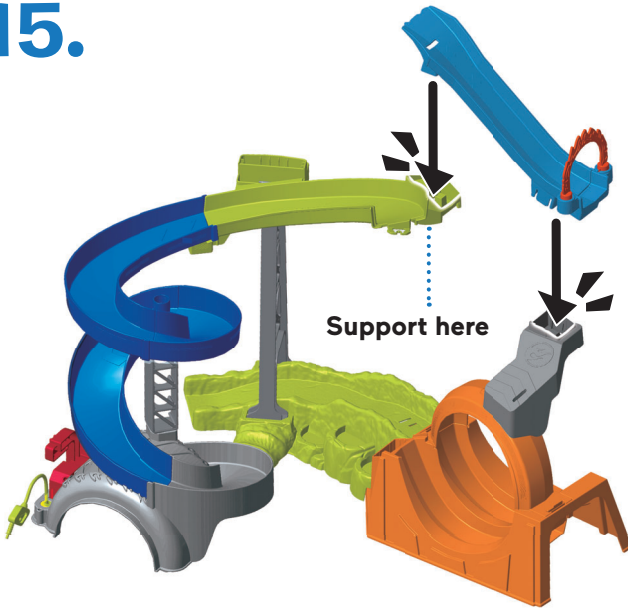


Top View

14.

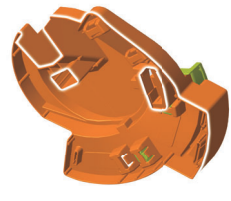
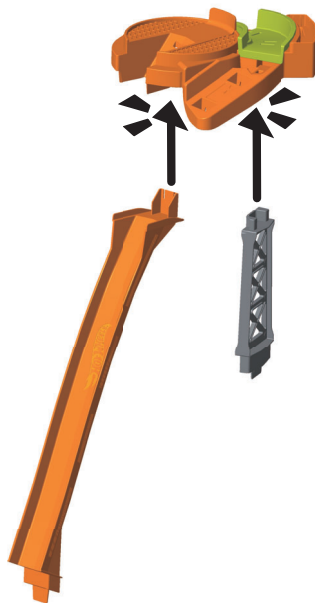


15.



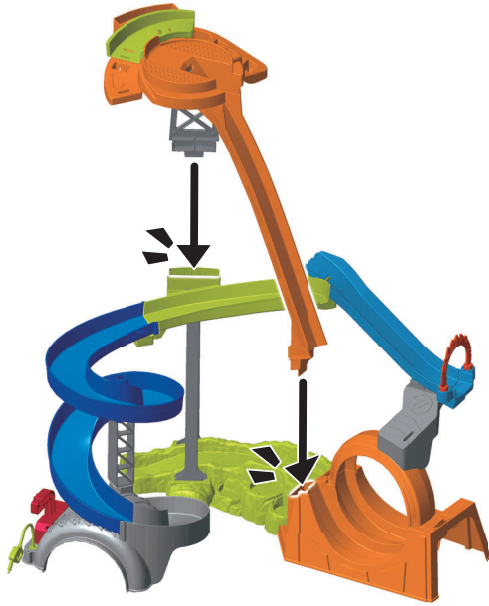
Assembling may take a lot of force. To make it easier, support underneath the pentagon track with your hand while you push down to assemble the plus track.

16.

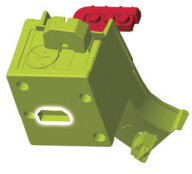
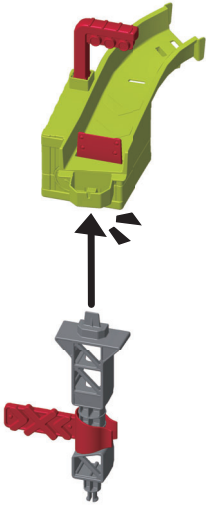


Look for these openings on the bottom of the platform.

17.



18.



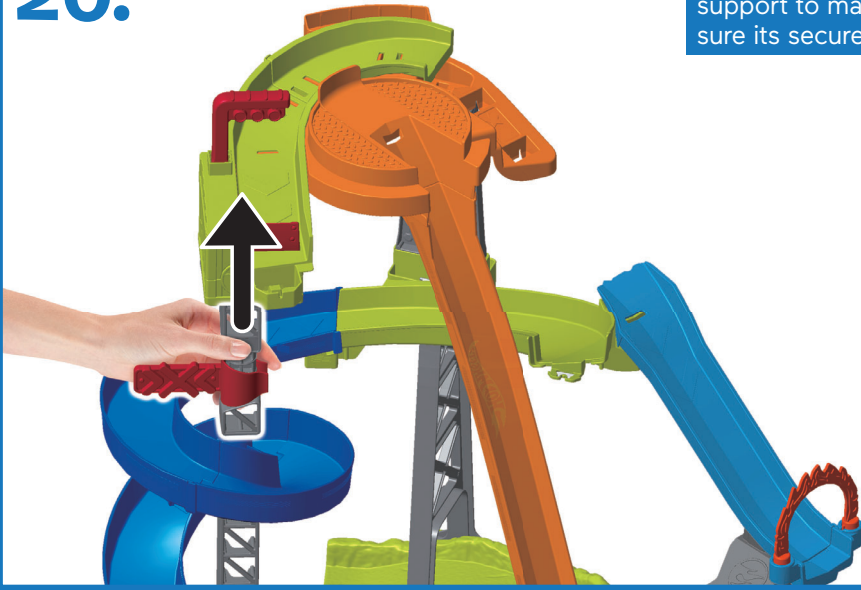
Look for this opening on the bottom of the platform.

19.

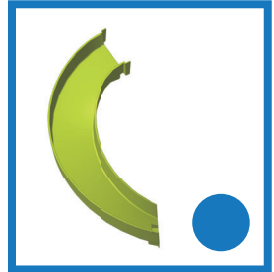
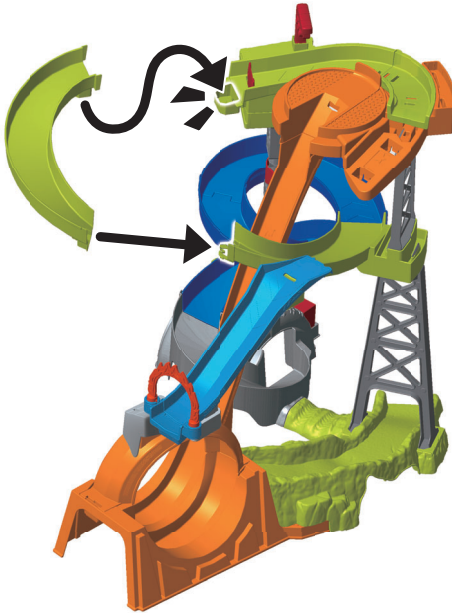


20.

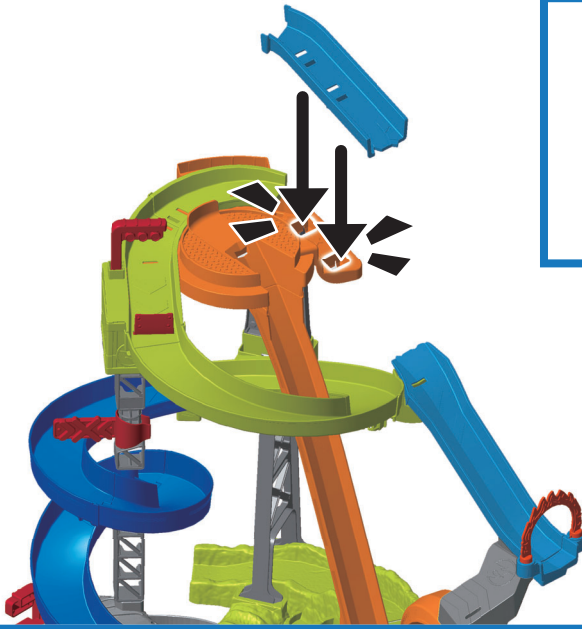
Pull up on the upper support to make sure its secure.



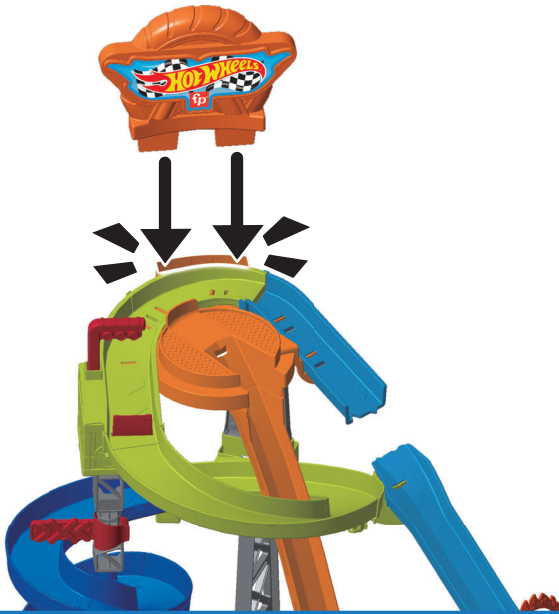
21.



22.

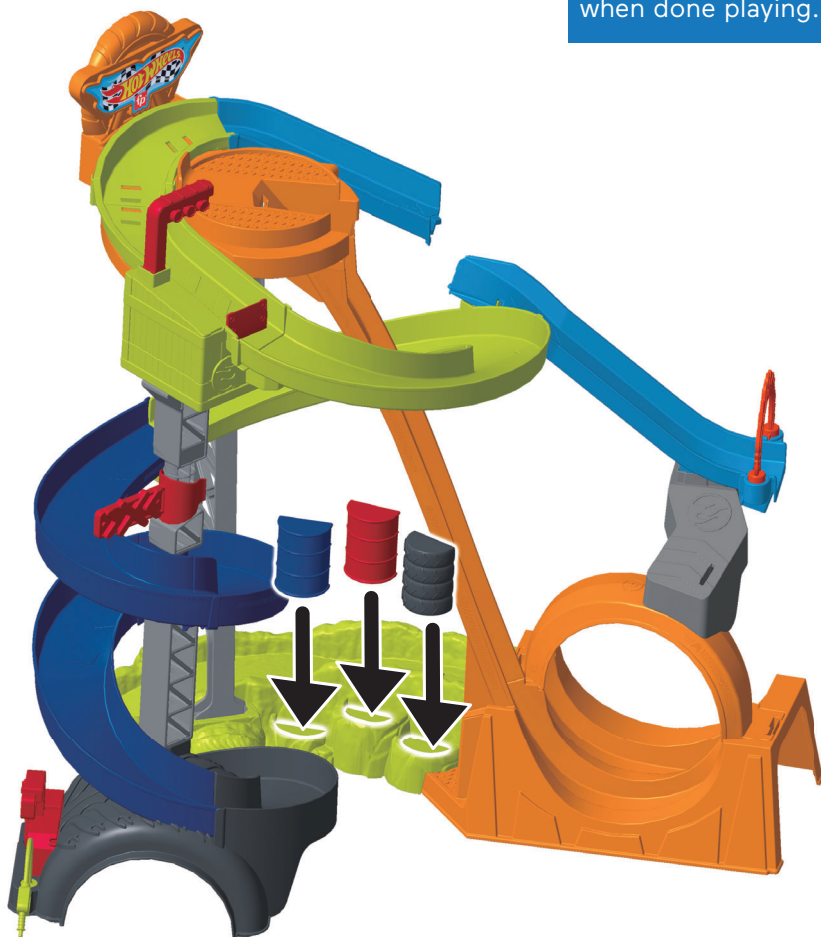


23.



Accessory Storage

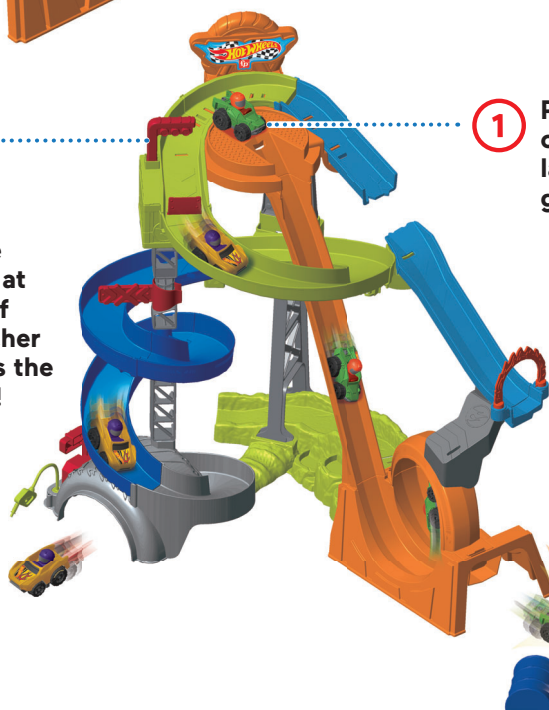
Fit the accessories here when done playing.



CRAZY STUNT ACTION!



1 Place a wheelie at the top of the jump ramp and give it a push!



1 Place a wheelie on the orange launcher and give it a push!

2 Place the wheelies at the top of the launcher and press the red lever!

3 Place the accessories at the bottom of the track and CRASH!

**UNITED STATES**

Fisher-Price, Inc., 636 Girard Avenue, East Aurora, NY 14052. Consumer Services: 1-800-432-5437.

CANADA

Mattel Canada Inc., 6155 Freemont Blvd., Mississauga, Ontario L5R 3W2 Consumer Services/Service à la clientèle : 1-800-432-5437. www.service.mattel.com.

GREAT BRITAIN

Mattel U.K. Limited, The Porter Building, 1 Brunel Way, Slough SL1 1FQ, UK. www.service.mattel.com/uk.

NEDERLAND

Mattel Europa B.V., Gondel 1, 1186 MJ Amstelveen, Nederland.

AUSTRALIA

Mattel Australia Pty. Ltd., 658 Church Street, Locked Bag #870, Richmond, Victoria 3121 Australia. Consumer Advisory Service 1300 135 312.

NEW ZEALAND

16-18 William Pickering Drive, Albany 1331, Auckland.

SOUTH AFRICA

Mattel South Africa (PTY) LTD, Office 102 I3, 30 Melrose Boulevard, Johannesburg 2196.

fisher-price®

LittlePeople®