



PASSWORD Keepsafe BOX™



Model G71036

For 1 player / Ages 8 and up

INSTRUCTION MANUAL

P/N 82358500 Rev.A

Now you can keep your most precious things safe with Password Keepsafe Box! Password Keepsafe Box keeps intruders out since it only opens when you say your private password. There's even a secret compartment for extra privacy!

BUTTON FUNCTIONS

Access - Press and hold this button to open Password Keepsafe Box. You'll be asked to say your password.

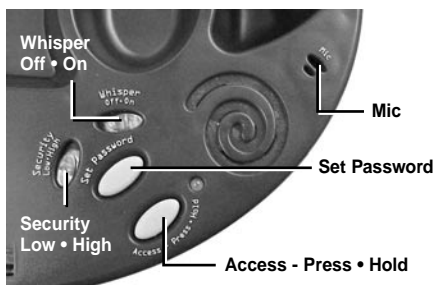
Security - Slide this switch between "High" or "Low" security to control how precisely your Password Keepsafe Box recognizes your voice.

Set Password - Press and hold this button to record a new password.

Password Access Light - When this light is green, you can say your password. If the light is not green, Password Keepsafe Box will not "hear" your password.

Whisper - Slide this switch between "On" or "Off" to turn Whisper Mode on or off.

Reset - The Reset button is located in the battery compartment. Insert a dull, pointed object (like the end of a paper clip) into the Reset button hole to open your Password Keepsafe Box without using your password.



GETTING STARTED

Password Keepsafe Box will open automatically when you install the batteries and press the "Reset" button.

RECORDING YOUR PASSWORD

After installing the batteries, you will be prompted to "Record your Password." Wait for the green "Access" light to illuminate, then say your chosen password in the microphone (MIC). Your password can be any word.

NOTE: If you do not wait until the green light is on, Password Keepsafe Box will not "hear" your pass-

E

word and will prompt you to speak again: "Error...please begin again."

Password Keepsafe Box will prompt you to repeat your new password again: "Repeat your password." If you have spoken your password correctly, your new password will be accepted: "Password Accepted."

HELPFUL HINT: Be sure to speak clearly and say your password the exact same way each time! When recording your password, make sure to minimize background noise or try to be in a quiet place.

You may want to write down your password in case you forget it--but be sure to write it in a safe place or it won't be a secret anymore!

NORMAL USE

Press and hold the "Access" button. Depending on the mode you selected (see "Whisper Mode" below), you will be prompted with "Your Password, Please" or "Whisper your Password." Wait for the green "Access" light and then say your chosen password clearly into the microphone (MIC). Continue following the voice prompts until your Password Keepsafe Box opens automatically.

If you have spoken the wrong password, Password Keepsafe Box will give you a chance to correct yourself. You will be prompted with "Please Begin Again, Repeat Your Password." Wait for the green "Access" light and then speak your chosen password clearly into the microphone (MIC). If you say the wrong password again, Password Keepsafe Box will sound the intruder alarm: "Access Denied."

INTRUDER ALARM

If you say the wrong password, the intruder alarm will sound. If someone tries to access your Password Keepsafe Box, it will sound the intruder alarm because it only works with the sound of your voice. When you open the Password Keepsafe Box, it will report the number of intruders.

WHISPER MODE

Whisper Off Mode - With this mode, you will record and speak your password in a normal tone of voice.

Whisper On Mode - With this mode, you will record and speak your password in a whisper.

CHANGING MODES AND PASSWORD

To change modes, you will be prompted to record a new password. Also, from time to time, you may want to change your password (especially if you think someone else knows it!). Just remember to write down your new password and keep it in a safe place.

Open Password Keepsafe Box using your old password. Press and hold the "Set Password" button. You will be prompted to "Record your new Password."

Wait for the green "Access" light to illuminate, then say your chosen password into the microphone (MIC).

If you want to change to Whisper Mode. Slide the Whisper button to the on position. You will be prompted to "Whisper your Password."

NOTE: If you do not wait until the green light is on, Password Keepsafe Box will not "hear" your password and will prompt you to speak again: "Error...please begin again."

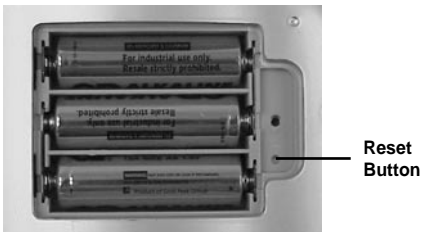
Password Keepsafe Box will prompt you to repeat your new password again: "Repeat your password." If you have spoken your password correctly, your new password will be accepted: "Password Accepted."

SECURITY SWITCH

If you are experiencing problems with getting your Password Keepsafe Box to recognize your password, switching to "Low" security may help.

RESETTING PASSWORD KEEPSAFE BOX

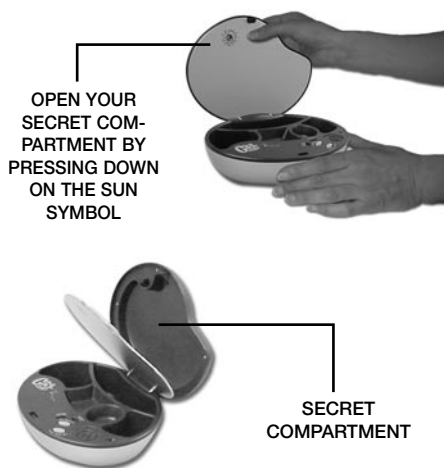
Press the "Reset" button to open your Password Keepsafe Box. Insert a dull, pointed object (like the end of a paper clip) into the "Reset" button hole. Password Keepsafe Box will open and you can then reset your password.



SECRET COMPARTMENT

The secret compartment is located in the lid of the Password Keepsafe Box. This is where secret notes or your most prized belongings can be stored. Press your thumb on the Sun symbol to open. (see diagram 1)

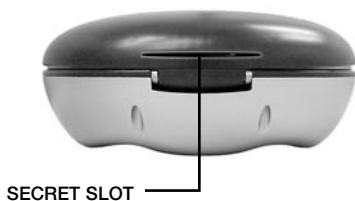
DIAGRAM 1



SECRET SLOT

To put your private notes into the secret compartment without opening your Password Keepsafe Box, slip them through the slot located on the back of the Password Keepsafe Box. When you want to access the contents of the Secret Compartment, press the Sun symbol to open. (see diagram 2)

DIAGRAM 2



BATTERY INSTALLATION

This product is powered by three (3) AA batteries.

- Using a screwdriver, loosen the screw until the battery compartment door can be removed.
- Insert three (3) AA batteries (we recommend alkaline) as indicated inside the battery compartment.
- Replace the battery compartment door and tighten the screw with a screwdriver. Do not over-tighten.

PLEASE NOTE: You will have 20 seconds to replace the old batteries before your password is lost. Should you lose your password, you will need to re-enter it as described as earlier.

ADULT SUPERVISION IS RECOMMENDED WHEN CHANGING BATTERIES.

CAUTION

- As with all small batteries, the batteries used with this game should be kept away from small children who might still put things in their mouths. If a battery is swallowed, consult a physician immediately.
- Be sure you insert the battery correctly and always follow the game and battery manufacturer's instructions.
- Do not dispose of batteries in fire.
- Batteries might leak if improperly installed, or explode if recharged, disassembled or heated.

MAINTENANCE

- Handle this game carefully.
- Store this game away from dusty or dirty areas.
- Keep this game away from moisture or extreme temperature.
- Do not disassemble this game. If a problem occurs, press the Reset button, or remove and replace the batteries to reset the game, or try new batteries. If problems persist, consult your warranty card for replacement instructions.
- Use only the recommended battery type.
- Do not mix old and new batteries.
- Do not mix alkaline, standard (carbon-zinc) or rechargeable (nickel-cadmium) batteries.
- Do not use rechargeable batteries.
- Do not attempt to recharge non-rechargeable batteries.
- Remove any exhausted batteries from the game.
- Do not short-circuit the supply terminals.
- Insert batteries with the correct polarity.

Please retain this for future reference.

This device complies with Part 15 of the FCC Rules. Operation is subject to the following two conditions: (1) this device may not cause harmful interference and (2) this device must accept any interference received, including interference that may cause undesired operation.

WARNING: Changes or modifications to this unit not expressly approved by the party responsible for compliance could void the user's authority to operate the equipment.

PLEASE NOTE: This equipment has been tested and found to comply with the limits for a Class B digital device, pursuant to Part 15 of the FCC Rules. These limits are designed to provide reasonable protection against harmful interference in a residential installation. This equipment generates, uses and can radiate radio frequency energy and if not installed and used in accordance with the instructions, may cause harmful interference to radio communications. However, there is no guarantee that interference will not occur in a particular installation. If this equipment does cause harmful interference to radio or television reception, which can be determined by turning the equipment off and on, the user is encouraged to try to correct the interference by one or more of the following measures:

- Reorient or relocate the receiving antenna.
- Increase the separation between the equipment and receiver.
- Connect the equipment into an outlet on a circuit different from that to which the receiver is connected.
- Consult the dealer or an experienced radio TV technician for help.

**RADICA:®
GIRL TECH®**

PASSWORD KEEPSAFE BOX IS A
TRADEMARK OF RADICA GAMES LTD.
© 2000 RADICA GAMES LTD.
PRODUCT SHAPE™
ALL RIGHTS RESERVED



U.S. CUSTOMER SUPPORT LINE: 1-800-803-9611
www.girltech.com