



Model G73030  
For 1 player / Ages 8 and up  
**INSTRUCTION MANUAL**  
P/N Rev.A

Let's go Huntin'!

With Radica Play TV Buckmasters Huntin'™ 2 you can travel to some of the finest hunting spots in the world, all from the comfort of your own home! Whether your tracking deer through the Colorado Rockies or Canada's Yukon, there's no finer way to hone your tracking and hunting skills! And if you need more practice, why not stop by the Target Range for a few rounds? You can even visit the Trophy Room to see who's bagged the top trophy. Good huntin' and good luck!

SETTING UP RADICA PLAY TV  
BUCKMASTERS HUNTIN'™ 2

BATTERY INSTALLATION AND REPLACEMENT

Loosen the screw on the rifle battery compartment door with a Phillips screwdriver. Remove the battery compartment door and insert four (4) AA batteries (we recommend alkaline) as indicated inside the compartment. Replace the battery compartment door and tighten the screw.

ADULT SUPERVISION IS RECOMMENDED WHEN INSTALLING BATTERIES.

CONNECTING RADICA PLAY TV BUCKMASTERS  
HUNTIN'™ 2 TO YOUR TV OR VCR

CONNECTING TO A TV

Plugs Into:

- **White Plug** insert into audio jack (left audio-in (white) jack)
- **Yellow Plug** insert into video jack( video-in (yellow) jack on your TV)

**NOTE:** To connect Play TV Huntin'™2 directly to a TV, the TV must be equipped with audio and video input jacks. They are commonly found on the front of the TV near the contrast, color, and picture adjustment controls or on the rear of the TV near the antenna and cable/satellite jacks. Set the TV to the appropriate video input mode (see your TV's operating manual for details).

CONNECTING TO A VCR

Plugs Into:

- **White Plug** insert into audio jack (left audio-in (white) jack)
- **Yellow Plug** insert into video jack( video-in (yellow) jack on your VCR)

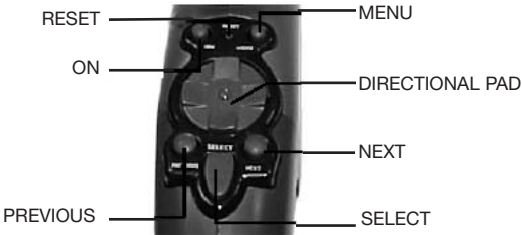
**NOTE:** If your TV does not have audio and video input jacks, you may connect Play TV Huntin'™2 through a VCR connected to your TV. Set the TV and VCR to the appropriate video input modes (see the VCR and TV operating manuals for details).

IMPORTANT!

This product will not operate properly if connected to a Projection, LCD, Flat Screen or High Definition TV. use only a standard glass screen tv.

ADULT SUPERVISION IS RECOMMENDED WHEN CONNECTING CABLES TO A TV AND VCR.

BUTTON FUNCTIONS



**ON** - Pressing the ON button turns the game on and off.

**OPTIONS** - Pressing the OPTIONS button takes you to the OPTIONS screen. Pressing the OPTIONS button will also pause the game. You may pause the game at any time. To resume game play, use the Previous/Next buttons to select the "OK" icon and then press the Select button.

**PREVIOUS/NEXT BUTTONS** - Pressing these buttons highlights the previous or next available selection in the Game Selection Menus.

**SELECT** - Pressing the Select button will lock in the currently highlighted selection in the Game Selection Menu.

**DIRECTIONAL PAD** - Pressing the directional pad allows you to move back and forth across the hunting terrain. The keypad also allows you to scroll up and down through boxes of text.

FIRING THE RIFLE

Point the rifle at your TV screen to aim and shoot. Look through the telescopic site. Line up your target in the crosshairs. Make sure the safety is off. Pump the rifle and pull the trigger to fire.

FIRING THE RIFLE



**NOTE:** You will need to pump the rifle every time before firing.

Press the ON button on the rifle. After the brief start-up animation, press the Select button to go to the Main Menu.

NAVIGATING THE MAIN MENU

Use the Previous/Next buttons to scroll through the Hunting Modes (Hunting Expedition, Hunting Guide, Target Range, and Trophy Room. The currently selected Hunting Mode will become highlighted. Press the Select button to (enter your selection. To return to a previous screen during game play, use the Previous/Next buttons to highlight the Back Arrow icon, then press the Select button. When you see the "OK" icon, use the Previous/Next buttons to highlight it. Press the Select button to enter in your selection.



NAVIGATING THE MENU SCREEN

**CALIBRATE** - Pressing the Calibrate button allows you to calibrate the rifle for shot accuracy. (We recommend you calibrate the rifle before you start each hunt)

**VOLUME** - Use the Previous/Next buttons to highlight the Volume Bar. Use the directional pad to raise or lower the game volume.

**QUIT** - Pressing the Quit button ends the current game and takes you back to the Title Screen.

HUNTING MODES

Hunting Expedition

This selection lets you choose between several exciting one-day hunts or a challenging Grand Slam hunt. You will then select the location, season, weapon, and type of hunt (see the SETTING YOUR HUNTING PREFERENCES section).

Bear Attacks

Stay alert! As you are hunting you may be confronted by bears who will attack while you're hunting. Shoot them before they make a meal out of you.

Hunting Guide

The legendary hunter Jackie "The Buckmaster®" Bushman will accompany you on a one-day, beginner-level hunting trip. Throughout your hunt, the Hunting Guide will appear to offer advice and helpful hints on raising your score. Use the directional pad to scroll through the Hunting Coach text boxes. Pressing the Select button will close the Hunting Guide screen.

Target Range

At the Target Range, you will need to shoot as many targets as possible in thirty seconds. Each round begins with a text screen and a countdown timer. During this time, you should load your gun and get ready. Some targets will pop up, while others will slide across the screen. At the end of the three rounds, you will see your total score. If it is a high score, you will automatically be taken to the Trophy Room. (See the TROPHY ROOM section.)

Trophy Room

The Trophy Room is a series of three screens, one for each type of game. Trophies are awarded for the largest deer that can be bagged in the beginner, novice and expert levels. Use the Previous/Next buttons to select one of the icons. Press the Select button to go to the trophy screen for that section. After a high scoring hunt or target range session, you will enter your name into one of the high score lists. Use the directional pad to scroll through the grid of letters and numbers. When you have found the correct letter or number, press the Select button to lock in your selection. Continue to scroll and select letters or numbers until your full name is entered. Use the Previous/Next buttons to select the "OK" icon, then press the Select button to accept your name entry. You will automatically be taken to the Trophy Room.

SETTING YOUR HUNTING PREFERENCES

**Select Location** - Use the directional pad to scroll up and down through the text box. Use the Previous/Next buttons to select your location, then press the Select button.

**Select Season** - Use the directional pad to scroll up and down through the text box. Use the Previous/Next buttons to select your season, then press the Select button.

**Select Weapon** - Use the directional pad to scroll up and down through the text box. Use the Previous/Next buttons to select your weapon, then press the Select button.

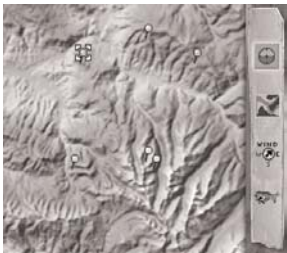
**Select Hunt** - Use the directional pad to scroll up and down through the text box. Use the Previous/Next buttons to select your hunt, then press the Select button.

MAP MODE

The first time you enter the map mode, you will see the entire hunting location. The icon on the map indicates your current position. The colored pushpins represent various sightings or events. Use the directional pad to highlight different pushpins on the map to see what each one represents. Use the Previous/Next buttons to highlight the Stalking Mode or Hunting Mode icon then press the Select button to move on to that mode.

STALKING MODE

In Stalking mode, you will see a closer view of yourself (the hunter) in the hunting location. Use the directional pad to move around the area and search for signs of deer. As you come across a clue, it will be displayed at the right of the screen. Keep track of the wind direction by watching the wind gauge. Use the Previous/Next buttons to highlight the Map Mode or Hunting Mode icon then press the Select button to move on to that mode.



HUNTING MODE

Use the directional pad to move from side to side in the hunting mode. Use the Previous/Next buttons to select the icons at the bottom of the screen. (Icons include map mode, stalking mode, binoculars, deer call and rattle, Cover Scent and Attractor Scent.) Press the Select button to enter your selection.



BATTERY INSTALLATION

ADULT SUPERVISION IS RECOMMENDED WHEN REPLACING BATTERIES.

CAUTION:

- As with all small batteries, the batteries used with this device should be kept away from small children who might still put things in their mouths. If a battery is swallowed, consult a physician immediately.
- Be sure you insert the battery correctly and always follow the device and battery manufacturer's instructions.
- Do not dispose of batteries in fire.
- Batteries might leak if improperly installed, or explode if recharged, disassembled or heated.

MAINTENANCE

- Handle this device carefully.
- Store this device away from dusty or dirty areas.
- Keep this device away from moisture or extreme temperature.
- Do not disassemble this device. If a problem occurs, press the Reset button, or remove and replace the batteries to reset the device, or try new batteries. If problems persist, consult the warranty information located at the end of this instruction manual.
- Use only the recommended battery type.
- Do not mix old and new batteries.
- Do not mix alkaline, standard (carbon-zinc) or rechargeable (nickel-cadmium) batteries.
- Do not use rechargeable batteries.
- Do not attempt to recharge non-rechargeable batteries.
- Remove any exhausted batteries from the device.
- Do not short-circuit the supply terminals.
- Insert batteries with the correct polarity.

Please retain this for future reference.

WARNING: EPILEPSY AND SEIZURES READ BEFORE OPERATING YOUR PLAY TV.

A few people may experience epileptic seizures when viewing flashing lights or patterns in our daily environment. These persons may experience seizures while watching TV pictures or playing video games. Players who have not had any seizures may nonetheless have an undetected epileptic condition. Consult your physician before playing video games if you have an epileptic condition or experience any of the following symptoms while playing video games: altered vision, eye or muscle twitching, other involuntary movements, loss of awareness of your surroundings, mental confusion and/or convulsions.

**IMPORTANT:** Before returning the unit for repair, test it with fresh alkaline batteries. Even new batteries may be defective or weak and low battery power is a frequent cause of unsatisfactory operation.

This device complies with Part 15 of the FCC Rules. Operation is subject to the following two conditions: (1) this device may not cause harmful interference and (2) this device must accept any interference received, including interference that may cause undesired operation.

**WARNING:** Changes or modifications to this unit not expressly approved by the party responsible for compliance could void the user's authority to operate the equipment.

**NOTE:** This equipment has been tested and found to comply with the limits for a Class B digital device, pursuant to Part 15 of the FCC Rules. These limits are designed to provide reasonable protection against harmful interference in a residential installation. This equipment generates, uses and can radiate radio frequency energy and if not installed and used in accordance with the instructions, may cause harmful interference to radio communications. However, there is no guarantee that interference will not occur in a particular installation. If this equipment does cause harmful interference to radio or television reception, which can be determined by turning the equipment off and on, the user is encouraged to try to correct the interference by one or more of the following measures:

- Reorient or relocate the receiving antenna.
- Increase the separation between the equipment and receiver.
- Connect the equipment into an outlet on a circuit different from that to which the receiver is connected.
- Consult the dealer or an experienced radio TV technician for help.

TROUBLESHOOTING

If you don't see the title screen after pressing the "On" button, make sure that the video and audio plugs are plugged into the correct locations.

TV Connection

No Sound

- Check if batteries are fresh
- Reset game by using an object such as a pen or a straightened paper clip.
- Check if batteries an installed correctly

No Picture or Color

- Check if jacks are plugged in correctly
  - Check if channel is set to Alt Channel
- (refer to TV owners manual to find Alt Channel)

VCR Connection

No Sound

- Reset game using an object such as a pen or a straightened paper clip.
  - VCR switch on back of VCR should be on 3 or 4
  - TV should be on the same channel
  - Check if VCR is on Alt Channel
- (refer to VCR owners manual to find Alt Channel)

Low Battery Sign

- A "Low Battery" graphic appears on the screen when the battery voltage becomes too low for the game to function properly. Replace the batteries as soon as this message is displayed.

TV

To locate your auxiliary channel, which is usually not 3 or 4, but a gaming channel found mostly between 2 and 99, (example 2,1,0,99). First try 00 being the auxiliary channel. Channel down from 3 until a Line 1 or Line 2, Video 1 or Video 2, Front, Aux, AV etc. appears on screen, then push power on the game and it should automatically come on if you are on the correct channel. If this does not work another way to find your auxiliary channel is to take a look at your television remote there may be button on there that might take you directly to the correct channel. The buttons you are looking for are Input, AUX, AV, Line, TV/Video, and Video. If your remote has one of these buttons, turn your television back to Channel 3 and hit that button. Power button on game should be turned on for the game to come up on the television. If your television remote does not have any of these buttons and channel 00 is not working you may take a look into the main menu and search for a way to get to your auxiliary channel. If none of these methods have helped you locate your auxiliary channel you may need to check your owner's manual and/or contact local television company.

VCR

Try putting videotape into the VCR and let it start to play and then hit stop. Sometimes this will give you a blue screen then you can channel down to your auxiliary channel. If you still do not get the blue screen try going into your TV and/or VCR main menu and see if it gives you options to have a blue screen background. Many times if you go into the main menu on your television you can change cable to video and get a blue screen. Also if you have an older television you can locate a hidden door to your television that has color, picture, horizontal, vertical, and cable, antennae buttons. If your television does have this you can push the antennae/cable and get the blue screen. If you have tried all of these options and still unsuccessful then you will need to get your VCR manual or contact the company to find out how to set up your VCR for these types of games.

Remember you can't play our games through a cable box or satellite so if you have one of these items make sure they are turned off before hooking up the game. You can hook up our games through DVD players and it would be the same type of set up as with your VCR.

90-DAY LIMITED WARRANTY

(This product warranty is valid in the United States and Canada only)

Radica Games Limited warrants this product for a period of 90 days from the original purchase date under normal use against defective workmanship and materials (batteries excluded). This warranty does not cover damage resulting from accident, unreasonable use, negligence, improper service or other causes not arising out of defects in material or workmanship. Radica Games Limited will not be liable for any costs incurred due to loss of use of this product or other incidental or consequential costs, expenses or damages incurred by the purchaser. Some states do not allow the exclusion or limitation of incidental or consequential damages, so the above limitations may not apply to you. This warranty gives you specific legal rights and you may also have other legal rights, which vary from state to state.

During this 90-day warranty period, the game will either be repaired or replaced (at our option) without charge to the purchaser when returned prepaid with proof of date of purchase to: Radica USA, Ltd., 13628-A Beta Road, Dallas, Texas 75244, USA. Please remove the batteries and wrap the unit carefully before shipping. Please include a brief description of the problem along with your return address and mail it postage prepaid.

**RADICA:**®  
RADICA PLAY TV BUCKMASTER HUNTIN' IS A  
TRADEMARK OF RADICA CHINA LTD.  
© 2003 RADICA CHINA LTD.  
PRODUCT SHAPETM  
PATENTS PENDING  
ALL RIGHTS RESERVED

XAVIX IS A MULTI PROCESSOR OF SSD COMPANY LTD.  
BUCKMASTERS AND THE BUCKMASTERS LOGO ARE  
REGISTERED TRADEMARKS OF BUCKMASTERS, LTD. USED  
UNDER LICENSE BY RADICA®

