



KeepsafeSecrets™



Model 75074

For 1 player / Ages 6 and up

INSTRUCTION MANUAL

P/N 82394100 Rev.A

Now you can keep your most precious things safe with Keepsafe Secrets! Keepsafe Secrets keeps intruders out since it only opens when you say your private password. There's even a secret compartment for extra privacy!

BUTTON FUNCTIONS

Access - Press and hold this button to open Keepsafe Secrets. You'll be asked to say your password.

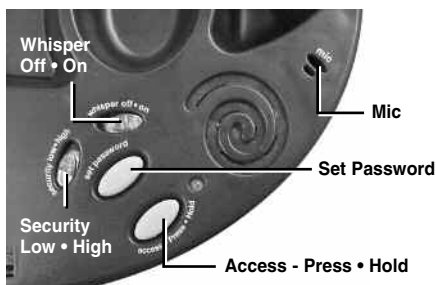
Security - Slide this switch between "High" or "Low" security to control how precisely Keepsafe Secrets recognises your voice.

Set Password - Press and hold this button to record a new password.

Password Access Light - When this light is green, you can say your password. If the light is not green, Keepsafe Secrets will not "hear" your password.

Whisper - Slide this switch between "On" or "Off" to turn Whisper Mode on or off.

Reset - The Reset button is located in the battery compartment. Insert a dull, pointed object (like the end of a paper clip) into the Reset button hole to open Keepsafe Secrets without using your password.



GETTING STARTED

Keepsafe Secrets will open automatically when you install the batteries and press the "Reset" button.

RECORDING YOUR PASSWORD

After installing the batteries, you will be prompted to "Record your Password." Wait for the green "Access" light to illuminate, then say your chosen password in the microphone (MIC). Your password can be any word.

NOTE: If you do not wait until the green light is on, Keepsafe Secrets will not "hear" your password

E

and will prompt you to speak again: "Error...please begin again."

Keepsafe Secrets will prompt you to repeat your new password again: "Repeat your password." If you have spoken your password correctly, your new password will be accepted: "Password Accepted."

HELPFUL HINT: Be sure to speak clearly and say your password the exact same way each time! When recording your password, make sure to minimise background noise or try to be in a quiet place.

You may want to write down your password in case you forget it--but be sure to write it in a safe place or it won't be a secret anymore!

NORMAL USE

Press and hold the "Access" button. Depending on the mode you selected (see "Whisper Mode" below), you will be prompted with "Your Password, Please" or "Whisper your Password." Wait for the green "Access" light and then say your chosen password clearly into the microphone (MIC). Continue following the voice prompts until Keepsafe Secrets opens automatically.

If you have spoken the wrong password, Keepsafe Secrets will give you a chance to correct yourself. You will be prompted with "Please Begin Again, Repeat Your Password." Wait for the green "Access" light and then speak your chosen password clearly into the microphone (MIC). If you say the wrong password again, Keepsafe Secrets will sound the intruder alarm: "Access Denied."

INTRUDER ALARM

If you say the wrong password, the intruder alarm will sound. If someone tries to access Keepsafe Secrets, it will sound the intruder alarm because it only works with the sound of your voice. When you open Keepsafe Secrets, it will report the number of intruders.

WHISPER MODE

Whisper Off Mode - With this mode, you will record and speak your password in a normal tone of voice.

Whisper On Mode - With this mode, you will record and speak your password in a whisper.

CHANGING MODES AND PASSWORD

To change modes, you will be prompted to record a new password. Also, from time to time, you may want to change your password (especially if you think someone else knows it!). Just remember to write down your new password and keep it in a safe place.

Open Keepsafe Secrets using your old password. Press and hold the "Set Password" button. You will be prompted to "Record your new Password."

Wait for the green "Access" light to illuminate, then say your chosen password into the microphone (MIC).

If you want to change to Whisper Mode. Slide the Whisper button to the on position. You will be prompted to "Whisper your Password."

NOTE: If you do not wait until the green light is on, Keepsafe Secrets will not "hear" your password and will prompt you to speak again: "Error...please begin again."

Keepsafe Secrets will prompt you to repeat your new password again: "Repeat your password." If you have spoken your password correctly, your new password will be accepted: "Password Accepted."

SECURITY SWITCH

If you are experiencing problems with getting Keepsafe Secrets to recognise your password, switching to "Low" security may help.

RESETTING KEEPSAFE SECRETS

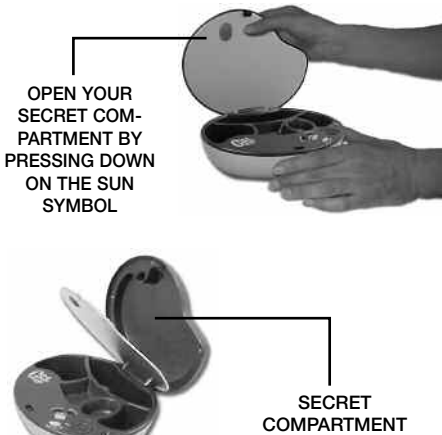
Press the "Reset" button to open Keepsafe Secrets. Insert a dull, pointed object (like the end of a paper clip) into the "Reset" button hole. Keepsafe Secrets will open and you can then reset your password.

SECRET COMPARTMENT



The secret compartment is located in the lid of Keepsafe Secrets. This is where secret notes or your most prized belongings can be stored. Press your thumb on the Sun symbol to open. (see diagram 1)

DIAGRAM 1



SECRET SLOT

To put your private notes into the secret compartment without opening Keepsafe Secrets, slip them through the slot located on the back of the Keepsafe Secrets. When you want to access the contents of the Secret Compartment, press the Sun symbol to open. (see diagram 2)

DIAGRAM 2



BATTERY INSTALLATION

This product is powered by three (3) AA (LR6) batteries.

- Using a screwdriver, loosen the screw until the battery compartment door can be removed.
- Insert three (3) AA (LR6) batteries (we recommend alkaline) as indicated inside the battery compartment.
- Replace the battery compartment door and tighten the screw with a screwdriver. Do not over-tighten.

PLEASE NOTE: You will have 20 seconds to replace the old batteries before your password is lost. Should you lose your password, you will need to re-enter it as described as earlier.

ADULT SUPERVISION IS RECOMMENDED WHEN CHANGING BATTERIES.

CAUTION

- As with all small batteries, the batteries used with this game should be kept away from small children who might still put things in their mouths. If a battery is swallowed, consult a physician immediately.
- Be sure you insert the battery correctly and always follow the game and battery manufacturer's instructions.
- Do not dispose of batteries in fire.
- Batteries might leak if improperly installed, or explode if recharged, disassembled or heated.

MAINTENANCE

- Handle this game carefully.
- Store this game away from dusty or dirty areas.
- Keep this game away from moisture or extreme temperature.
- Do not disassemble this game. If a problem occurs, press the Reset button, or remove and replace the batteries to reset the game, or try new batteries. If problems persist, consult your warranty card for replacement instructions.
- Use only the recommended battery type.
- Do not mix old and new batteries.
- Do not mix alkaline, standard (carbon-zinc) or rechargeable (nickel-cadmium) batteries.
- Do not use rechargeable batteries.
- Do not attempt to recharge non-rechargeable batteries.
- Remove any exhausted batteries from the game.
- Do not short-circuit the supply terminals.
- Insert batteries with the correct polarity.

Please retain this for future reference.

6 MONTH PRODUCT WARRANTY

(This product warranty is valid in the United Kingdom only)

All products in the **RADICA®** range are fully guaranteed for a period of 6 months from the original purchase date under normal use, against defective workmanship and materials (batteries excluded). This warranty does not cover damage resulting from accident, unreasonable use, negligence, improper service or other causes not arising out of defects in material or workmanship.

In the unlikely event that you do experience a problem within the first 6 months, please telephone the Technical Support team: **Tel. 0871 222 8278. Calls are charged at 10p per minute and will show up on your standard telephone bill. Helpline hours are 2pm-11pm, Monday to Friday.**

IMPORTANT: Always test the product with fresh alkaline batteries. Even new batteries may be defective or weak and low battery power is a frequent cause of unsatisfactory operation.

YOUR STATUTORY RIGHTS ARE NOT EFFECTED.

Distributed by:
RADICA UK Ltd.
The Old Stables, Munns Farm,
Cole Green, Hertfordshire,
SG14 2NL, England



UK HELPLINE SUPPORT
0871 222 8278

Calls are charged at 10p per minute and will show up on your standard telephone bill. Helpline hours are 2pm - 11pm, Monday to Friday.



RADICA:®
GIRL TECH®
KEEPSAFE SECRETS IS A
TRADEMARK OF RADICA GAMES LTD.
© 2005 RADICA GAMES LTD.
PRODUCT SHAPE™
ALL RIGHTS RESERVED