



connectv. CRICKET™



Model 76073
For 1 player / Ages 8 and up
INSTRUCTION MANUAL
P/N 823A2800 Rev.A

WARNING: EPILEPSY AND SEIZURES READ BEFORE OPERATING YOUR CONNECTV

A few people may experience epileptic seizures when viewing flashing lights or patterns in our daily environment. These persons may experience seizures while watching TV pictures or playing video games. Players who have not had any seizures may nonetheless have an undetected epileptic condition.

Consult your physician before playing video games if you have an epileptic condition or experience any of the following symptoms while playing video games: altered vision, eye or muscle twitching, other involuntary movements, loss of awareness of your surroundings, mental confusion and/or convulsions.

BATTERY INSTALLATION

On the back of the main unit, loosen the screw on the battery compartment and insert four (4) "AA" (LR6) batteries as indicated inside the compartment (alkaline batteries recommended). Replace the battery compartment door.

NOTE: Batteries in the Main Unit should give you about 10 hours of game play (if alkaline batteries are used). The game will not operate normally when the batteries begin to run low. The screen may be blurred and resetting the game may not work. Be sure to install fresh batteries. There is also no memory function. All game data will be erased when the power is turned off or batteries are replaced.



On the bottom of the bat handle loosen the screws on the battery compartment. Insert two (2) "AA" (LR6) batteries, aligning the positive (+) and negative (-) terminals as indicated. Insert the positive terminals facing down. Replace the cover and tighten the screws.

ADULT SUPERVISION IS RECOMMENDED WHEN INSTALLING BATTERIES.

TV CONNECTION

NOTE: To connect ConnectTV Cricket directly to a TV, the TV must be equipped with audio and video input jacks. They are commonly found on the front of the TV near the contrast, color and picture adjustment controls or on the rear of the TV near the antenna and cable/satellite jacks.

If your TV does not have audio and video input jacks, you may connect ConnectTV Cricket through a VCR connected to your TV.

Please note: If your TV does not have AV Input Jacks, you can connect your game through your VCR or use an RF Modulator. RF Modulators can be purchased at most electronic stores.

CONNECTING TO A VCR

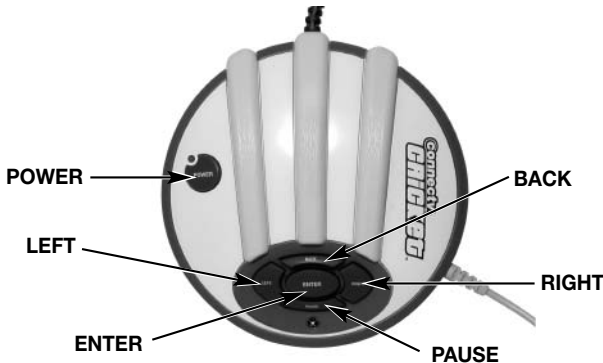
To connect ConnectTV Cricket to your VCR, insert the yellow video plug from the Main Unit into the video-in (Yellow) jack on your VCR, the white audio plug into the left audio-in (white) jack. Then set the VCR to the appropriate video input mode (see your VCR's operating manual for details).

ADULT SUPERVISION IS RECOMMENDED WHEN CONNECTING CABLES TO A TV AND VCR.

CAUTION

Before playing ConnectTV Cricket, ensure that you have a clear area around you and you will not hit the TV, other people or any other objects when swinging the bat or bowling the ball.

BUTTON FUNCTIONS BASE CONSOLE



POWER – Pressing the Power Button will turn ConnectTV Cricket on or off.

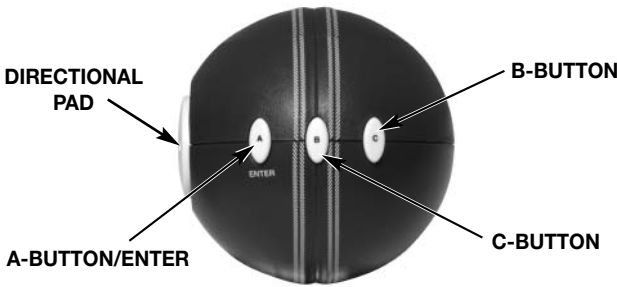
LEFT/ RIGHT – Used to navigate the menu screens. Press Enter to make your selection.

ENTER – Used to make selections in menu screens.

PAUSE – Used to pause the game and access in game options

Back – Used to back up 1-step in menu screens

BALL CONTROLS



A-BUTTON/ENTER – 'Use the A-Button/Enter to make menu selections and in combination with the B-Button and C-Button to apply spin to the ball when thrown.

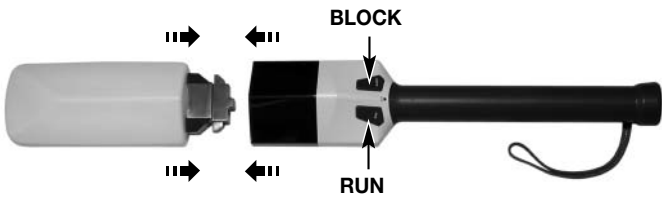
B-BUTTON – Use the B-Button in combination with the A-Button and C-Button to apply spin to the ball when thrown.'

C-BUTTON – Use the C-Button in combination with the A-Button and B-Button to apply spin to the ball when thrown.

DIRECTIONAL PAD – Use the directional pad to aim when bowling and to navigate menu screens.

THROWING – Make bowling motion when bowling.

BAT CONTROLS



SWING – Stand over the main console when swinging.

BLOCK BUTTON – Use the block button in gameplay to block

RUN BUTTON – Use the run button in gameplay to run between the wickets.

GETTING STARTED

WARNING: Make sure you place the base console on the floor in front of the TV, located far enough from the TV and any other objects or people to avoid striking anything or anyone when you swing the bat.

OPTIONS MENU

Show/ Hide Status

Select this option to show or hide the mini scorecard shown between each ball bowled.

Delete save

This will clear the battery back up memory of any previously saved game data.

BATTING

IMPORTANT SAFETY NOTE: Before beginning game play, make sure to place your bottom batting hand through the Safety Strap on the bottom of the bat handle.

SWING AWAY – Take your stance over base console and wait for the bowl. Swing the bat to hit the ball. The batter's timing and force will determine direction and distance.

BLOCKING – To block the batter must hold down the block key on the bat at any time after the ball is bowled. A ball will only be blocked if it is pitched in line with the wicket.

RUNNING – After the ball is hit the batter can choose to run. Press the run button to travel between the wickets. To stop running press the run button again. If the batsmen are less than halfway between the wickets they will turn back.

THROWING THE BALL

Warning: When making the throwing motion, you must never let go of the ball. Doing so can damage the game, damage whatever it hits, or injure whomever it hits.

BOWLING

BOWLER SELECT – The bowler first selects from either spin or fast bowler. At the end of each over, the player will be able to select whether to use a spin or fast bowler for the next over.

To bowl the ball, the player must use the directional pad to move the Ball Aim Indicator on the screen then make a bowling motion while holding down a combination of the A, B, or C buttons. The gauge represents the bowler's run up to the popping crease. The closer the gauge is to the line, the better the ball bowled. If the gauge crosses the line a no-ball is called. Pressing a combination of buttons when bowling will cause the ball to spin in different directions after pitching. Using these combinations while pitching in different places will enable the bowler to perform certain types of ball including Yorkers, googlies, leg breaks and sliders.

FIELDING – Fielding is automatic.

PLAYING CONNECTV CRICKET

If your ConnectTV Cricket is connected to your TV, turn on the TV, then set the TV to the appropriate video input mode (see set-up section of this manual). If your ConnectTV Cricket is connected to your TV through a VCR, turn on the TV and VCR, then set both the TV and VCR to the appropriate video input modes (see set-up section of this manual). Next, turn on the power to your ConnectTV Cricket by pressing the On/Off Button on the base console. After a brief start-up animation, the Game Selection Menu will appear on the TV screen.

Using either the directional pad on the ball or on base console, you will be able to scroll through the menu options (1-Day Match, 5-Day Test, Tournament, Skill Level, Options)

The currently selected option will be highlighted. Use the bat, the ball or the enter button (see button functions section of this manual) to make your selection.

You can choose from 1-Day Match or 5-Day Test. You will also be able to select the amount of players, number of overs (1-day only) and batting stance.

- **Choose # of Players** – 1 or 2 players for a full game.
- **Select Player 1 Side** – Choose team by scrolling through a list of sixteen (16) teams.
- **Select Player 2/ CPU side** – Choose team by scrolling through a list of sixteen (16) teams.
- **# of Overs** – Choose 10, 20, 30, 40 or 50 overs
- **Batting Stance** – Choose right handed or left handed.

Difficulty Levels – From the main menu, the player can adjust the games level of difficulty. ConnectTV Cricket has 3 levels of difficulty:

- **Club:** batting and bowling is EASY
- **County:** Batting and bowling is MODERATE
- **International:** Batting and bowling is DIFFICULT

Players can further adjust difficulty levels through the teams they select. Each team is assigned its own batting, bowling and fielding attributes.

1-DAY MATCH

Play a standard 10, 20, 30, 40 or 50 over game for 1-2 players. You will be able to choose both playing teams. The player with the highest score within the set amount of overs is the winner.

The Toss

Select heads or tails on the coin toss screen. The team that wins the toss will be able to choose to bat or bowl first.

In game Options

Pressing Pause at any point during the game will take you to the in-game options screen. From here you will be able to quit or resume.

5-DAY TEST MATCH

A full 5-day test match with declarations, follow-ons and game save facility for 1-2 players. You will be able to choose both playing teams.

The Toss

Select heads or tails on the coin toss screen. The team that wins the toss will be able to choose to bat or bowl first.

In game Options

Pressing Pause at any point during the game will take you to the in-game options screen. From here you will be able to quit, save and quit, resume or declare.

Declaring

In test match mode the batting player can declare at any point, ending their innings on their current score. To do this press the **Pause** button and select **Declare**.

Save Test

To save your test match press **Pause** whilst in bowling/ batting view and select **Save and Quit**. The game will save automatically. **Note: saving a game will automatically overwrite and previously saved data for both tournament and Test Match mode.** The menu screen will inform you of the game you are about to overwrite.

Resume Test

To resume the 5 Day test Match, select 5-Day Test then Resume. The game will restart at the point it was last saved.

TOURNAMENT

A full tournament played with 16 international sides that are randomly split into four preliminary groups. The sides in each Group play each other once, earning 4 points for a win or 2 for a draw, with the two highest scoring sides from each group moving up to the Final Group.

Save Tournament

To save your tournament press pause during a game and select **Save and Quit**. The game will save automatically. **Note: saving a game will automatically overwrite and previously saved data for both tournament and Test Match mode.** The menu screen will inform you of the game you are about to overwrite.

Resume Tournament

To resume the tournament, select Tournament then Resume. The game will restart at the point it was last saved.

Tournament Structure (show tournament table screen)

Preliminary Groups - If any sides finish on the same points then the side(s) that won the most games progress. If this still results in a draw then the side with the higher net Run Rate (total number of runs divided by the number of Overs) goes through.

Final Group – In the Final Group the eight competing sides play each other once.

Play Offs – Once the Final Group games have been played out, the top four sides enter semi-final play-offs, with the side that came first playing the side that came fourth and the side that came second plays the side that came third. The winners of those two matches then face each other in the final.

GAME VIEWS

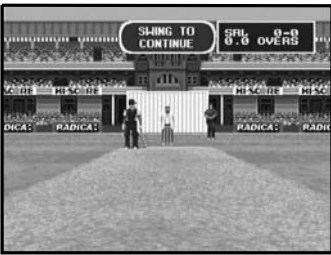
If a human player is batting the screen will prompt the player to "Swing the Bat". When the player swings the bat, this indicates that they are ready and the bowler will begin his run up. If a player controlled team is bowling against a computer controlled team, then the player bowling can start immediately.

Once the bowler has thrown the ball, the batter will attempt to hit the ball. When the ball is hit the BATTER'S VIEW screen will show the initial trajectory and angle of the ball quickly before panning to the FIELDING VIEW screen.

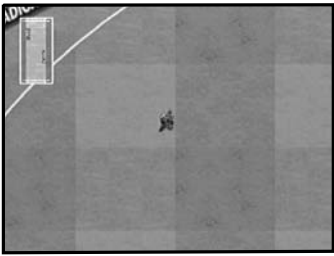
Scores will be shown at the end of each over and at the end of each innings.

BATSMAN VIEW – will be shown whenever someone is up to bat, The following information will also be shown:

- The current score for the batting team and the number of overs bowled.
- The wicket. If you are bowled out you will see the ball hit the wicket.



FIELDER VIEW – When the screen pans to fielding view the runners will be visible in an inset screen in the top left hand corner. The batter can use this to judge whether to run.



Bowling



- **AIMING** – Use the DIRECTONAL PAD to move the BALL AIM INDICATOR on the screen. The cursor will indicate where the ball will pitch if bowled at maximum power.
- **SPIN/ SEAM SELECTION** – Use the 3 SPIN SELECTION buttons A, B, or C to determine what type of ball will be bowled. Note that a spin bowler will be able to manipulate the ball better than a fast bowler.
NOTE: The SPIN SELECTION is not locked until the throwing motion begins.
A – Ball will spin or seam to the left (as seen from the batter’s perspective).
C – Ball will spin or seam to the right (as seen from the batter’s perspective).
B – Applies top spin.
A + B – Applies left and top spin.
C + B – Applies right and top spin.
A + C – Applies bottom spin.
A+B+C – No spin

- **BOWLING** – To bowl the ball the player must use force and a bowling movement. The degree of force will determine the speed of the ball. The length of the pitch will be determined by the power bar that rises as the bowler runs up to the popping crease. The closer the gauge is to the maximum line, the more accurate the ball will be. If the gauge goes over the line, then the player will bowl a no-ball.

No - Balls and Wides.

No balls will occur if the bowler goes over the maximum line of the power gauge or if the ball bounces more than twice before it reaches the batsman. A wide will be called if the ball is bowled wide. In either case the batsman will receive 1 extra run and the ball will not be counted as part of the over. The batsman can still choose to run on either ball.

BATTING

Batting will take place in BATTER’S VIEW with three different actions: SWINGING, BLOCKING, and RUNNING.

- **SWINGING** – Once the ball has been thrown, the player should swing the bat to hit the ball. Hitting the ball is a matter of timing.
- **BLOCK** – To block the ball instead of swinging at it, press the BLOCK button on the bat when the ball is bowled. Note that the ball will only be blocked if it is heading toward the wicket.
- **RUNNING** – Once a ball has been hit, the player can choose to RUN by pressing the RUN button situated on the Cricket Bat. Player can stop running by pressing the RUN button again. On release of the RUN button the batsmen will continue to complete the run they are on, unless they haven’t reached the halfway point, in which case they will turn back. If the ball hits the stumps before the batsmen complete their run, player will be OUT.

WAYS OF GETTING OUT

In professional cricket there are 10 ways of getting out. To keep things simple ConnectTV Cricket uses the four main ways.

Bowled

The ball hits the stumps directly from the bowler’s ball.

LBW

The ball is deemed to have hit the batsman’s leg when it would otherwise have hit the stumps

Caught

The fielding team catches the ball from the player’s bat before it bounces.

Run Out

The fielding team hit the stumps before the batsman reaches it while running.

Scorecard

At the end of each ball bowled you will see a mini scorecard detailing the current bowler and batters stats. You can select to show or hide this screen in the options menu.



Bowler

- O: Overs bowled
- M: Maiden overs bowled (overs where no runs have been scored)
- R: Runs Conceded
- W: Wickets taken

Batter

- R: Total Runs Scored

- B: Balls faced
- 4s: Number of 4s scored
- 6’s Number of 6s scored

At the end of each over you will be shown two separate scorecards for both batting and bowling sides. Press **left** and **right** button to toggle between batting and bowling stats. **Swing the bat** or press **enter/A** on the ball to start the next over.



Bowler

- Bowler’s Name
- O: Overs bowled
- M: Maiden overs bowled (overs where no runs have been scored)
- R: Runs Conceded
- W: Wickets taken

Extras – The amount of extra runs scored from wides and no-balls

Over – The amount of overs bowled in the innings

Score – The total amount of Runs Scored

FoW – The runs scored at the fall of each wicket

Batter

- Batter’s name
- Status:
N.O - Not Out/ C.O- Caught Out/ B- Bowled/ LBW- Leg Before Wicket/ R.O- Run Out
- R: Total Runs Scored
- B: Balls faced
- 4s: Number of 4s scored
- 6’s Number of 6s scored

Extras – The amount of extra runs scored from wides and no-balls

Over – The amount of overs bowled in the innings

Score –The total amount of Runs Scored

FoW – The runs scored at the fall of each wicket

IN GAME OPTIONS

Pressing pause at any point during gameplay will enter the in-game options menu

From here you can choose to Quit, Hide/ Show status, Quit and Save (5 day match and tournament only), Declare (5 day match only).

TROUBLE SHOOTING TV

To locate your auxiliary channel, which is usually not 3 or 4, but a gaming channel found between 2 and 99 (example 2, 1, 0, 99), first try 00 to see if it is the auxiliary channel. Channels downwards from 3 until a Line 1 or Line 2, Video 1 or Video 2, Front, Aux, AV, etc., appears on screen, then push the power button on the game and it should automatically come on if you have selected the correct channel. If this does not work, another way to determine your auxiliary channel is to take a look at your television remote. There may be a button on the remote that may take you directly to the correct channel. The buttons you are looking for may be labeled Input, AUX, AV, Line, TV/Video, or Video. If your remote has one of these buttons, turn your television back to Channel 3 and select that button. The power button on the game should be turned on in order for the game to appear on the television. If your television remote does not have any of these buttons, and channel 00 is not working, you may need to search the main menu for a way to determine your auxiliary channel. If none of these methods have helped you locate your auxiliary channel, you may need to check your owner’s manual and/or contact a local television repair company.

VCR

When connecting to a VCR, you must first start with a blue background showing on your television screen. To obtain a blue screen, try inserting a videotape into the VCR, let it start to play, then hit the stop button. This may give you a blue screen, then you can channel down to your auxiliary channel. If the blue screen still does not appear, try entering your TV and/or VCR main menu and see if it gives you options to select a blue screen background. Many times if you enter the main menu on your television you can change the setting from cable to video and display a blue screen. Also if you have an older television, you may locate a hidden door on your television that has color, picture, horizontal, vertical, and cable, antennae buttons. If your television includes this panel, you can select the antennae/cable button and see the blue screen appears. If you have tried all of these options and are still unsuccessful connecting the console, then you may need to check your VCR owner’s manual or contact the manufacturer to find out how to set up your VCR for console games.

Remember, you can’t play our games through a cable box or satellite, so if you own one of these make sure it is turned off before connecting the game. You can connect our games through DVD players with the same connection as a VCR.

If you still have difficulty with setup or operation of your game, please call our players helpline mentioned at the end of this manual.

If you choose to use an AC Adapter we suggest the following :

Recommended Adaptor Output:

- Voltage: 6 Volts DC
- Current: 300 mA (minimum)
- Polarity: Negative Center
- Plug Size: 5.5 mm outside diameter, 2.1 inside diameter.
- AC Adapters are available at most electronic stores.

If you use the product with a transformer, regularly examine for damage to the cord, plug, enclosure and other parts. In the event of any damage, do not use the toy with the transformer.

CAUTION

- **As with all small batteries, the batteries used with this device should be kept away from small children who might still put things in their mouths. If a battery is swallowed, consult a physician immediately.**
- **Be sure you insert the battery correctly and always follow the device and battery manufacturer’s instructions.**
- **Do not dispose of batteries in fire.**
- **Batteries might leak if improperly installed, or explode if recharged, disassembled or heated.**
- **Sometimes, a build-up of static electricity (from carpets, etc) may cause the game to stop working. Just reset the game by switching the power button off for a few seconds and it will work again.**
- **The unit may malfunction when there is radio interference on the power line and signal line. The unit will revert to normal operation when the interference stops.**
- **In an environment with radio frequency interference, the product may malfunction and require user to reset the product.**
- **Sometimes, a Strong Electro Magnetic Interference may cause the game to stop working and memory lost. Just reset the game, and it will work again.**

MAINTENANCE

- Handle this device carefully.
- Store this device away from dusty or dirty areas.
- Keep this device away from moisture or extreme temperature.
- Do not disassemble this device. If a problem occurs, press the Reset button, or remove and replace the batteries to reset the device, or try new batteries. If problems persist, consult the warranty information located at the end of this instruction manual.
- Use only the recommended battery type.
- Do not mix old and new batteries.
- Do not mix alkaline, standard (carbon-zinc) or rechargeable (nickel-cadmium) batteries.
- Do not use rechargeable batteries.
- Do not attempt to recharge non-rechargeable batteries.
- Remove any exhausted batteries from the device.
- Do not short-circuit the supply terminals.
- Insert batteries with the correct polarity.
- This product is not suitable for children under 36 months.
- Use only with the recommended transformer type.
- Disconnect the transformer before cleaning the console or controller.
- The transformer is not a toy.
- Transformers used with the toy are to be regularly examined for damage to the cord,plug, enclosure and other parts. In the event of such damage, the toy must not be used with this transformer until the damage has been repaired.
- The toy is not to be connected to more than one power supply.
- Packaging should be kept as it contains important information.

Please retain this for future reference.

6 MONTH PRODUCT WARRANTY (This product warranty is valid in the United Kingdom only)

All products in the **RADICA®** range are fully guaranteed for a period of 6 months from the original purchase date under normal use, against defective workmanship and materials (batteries excluded). This warranty does not cover damage resulting from accident, unreasonable use, negligence, improper service or other causes not arising out of defects in material or workmanship.

In the unlikely event that you do experience a problem within the first 6 months, please telephone the Technical Support team: **Tel. 0871 222 8278. Calls are charged at 10p per minute and will show up on your standard telephone bill. Helpline hours are 2pm-11pm, Monday to Friday.**

IMPORTANT: Always test the product with fresh alkaline batteries. Even new batteries may be defective or weak and low battery power is a frequent cause of unsatisfactory operation.

THIS WARRANTY IS IN ADDITION TO YOUR STATUTORY RIGHTS.

CREDITS
Publisher – Radica
Programmer/Author - Hi-Score TV Limited
Production Company - Hi-Score TV Limited

Distributed by:
RADICA UK Ltd.
The Old Stables, Munns Farm,
Cole Green, Hertfordshire,
SG14 2NL, England
www.radicauk.com

UK HELPLINE SUPPORT
0871 222 8278

Calls are charged at 10p per minute and will show up on your standard telephone bill. Helpline hours are 2pm - 11 pm, Monday to Friday.

RADICA®
CONNECTV AND CONNECTV CRICKET
ARE EITHER REGISTERED TRADEMARKS
OR TRADEMARKS OF RADICA GAMES LTD.
©2006 RADICA GAMES LTD.
PRODUCT SHAPET™
ALL RIGHTS RESERVED