

RADICA!

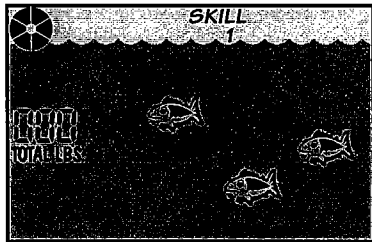
MODEL 9813
INSTRUCTION MANUAL
 For 1 Player / Ages 4 and Up



LET'S GO FISHING!

Press the ON•CAST button to wake up the fish! Your fishing friend will say "LET'S GO FISHIN'"

ON • CAST



CHOOSE A SKILL LEVEL

After waking up the fish, you will be on Skill Level 1. Press the SKILL button to change to either Skill 1 or Skill 2.



SKILL 1 — No piranha.
 (Easier to catch fish)



SKILL 2 — Watch out for the piranha! He can eat the fish on your line!



TIMER

During a game, the timer will be counting down the time. When the timer runs out, the game is over. See how many fish you can catch before the timer runs out!

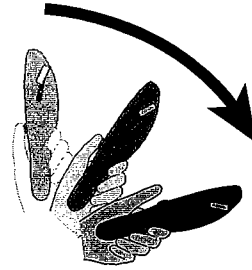


Also, the total weight of all the fish you caught will be displayed during the game and at the end of the game.

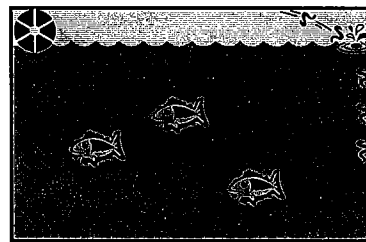
000
TOTAL LBS.

CAST THE LINE!

To make a cast, **hold the CAST button down** and make a quick, forward casting motion.

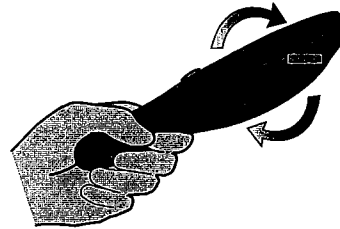


The worm will go out, splash in the water and start to sink.



REEL IN THE LINE!

Reel in the line by turning the handle in a clockwise motion.



The speed of your reeling controls the way the worm moves:

• Reel at a **SLOW PACE** to move the worm from right to left.



• Reel at a **FAST PACE** to move the worm up.



• **STOP** reeling to let your worm sink down.



As you reel in the line, try to get the worm in front of one of the fish. If the fish is hungry, he will bite the worm! If he's not hungry, he will swim away. Good Luck!



YOU HAVE A BITE!

When a fish bites your worm, the game will vibrate!

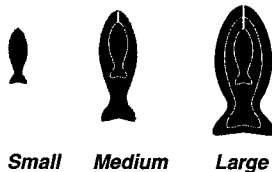
Quickly pull the game back toward you to set the hook.

Once the hook is set, your fishin' buddy will yell **"REEL HIM IN!"**.

Start reeling again to bring the fish into the boat.

DON'T STOP REELING!
If you stop reeling for a few seconds, you will lose your fish.

While you are reeling in your line, look at the size display to see the approximate size of your fish.

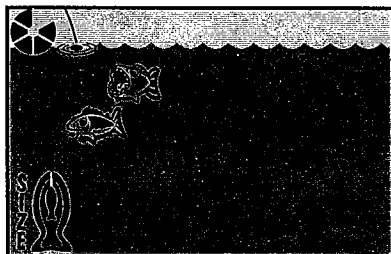


THE PIRANHA

The piranha is a very hungry fish who likes to eat the fish on your line. He only appears in Skill Level 2.



If you reel your fish up in front of the piranha, he will eat your fish and spit out the bones.



STARTING OVER

You can start a new game at any time by pressing and holding NEW GAME. The new game appears on the screen in Skill Level 1. Press SKILL to change to Skill Level 2. The game automatically turns off after being idle for about a minute.

BEST CATCH

At any time, you can see the weight of the largest fish you've caught by pressing the BEST CATCH button.

BEST GAME

At any time, you can see best total weight of fish caught within the time limit by pressing the BEST GAME button.

SOUND

You can turn the sound on or off by pressing the SOUND BUTTON.

BATTERY INSTALLATION

1. To open the battery cover, loosen the screw on the battery compartment cover and slide the cover out.
2. Insert two (2) fresh AA (LR06) alkaline batteries with the negative ("—") ends against the springs.
3. Replace the battery compartment cover.

CAUTION:

- As with all small batteries, the batteries included with this game should be kept away from small children who still put things in their mouths. If the battery is swallowed, promptly see a doctor.
- Be sure you insert the battery correctly and always follow the game and battery manufacturers' instructions.
- Battery may leak if improperly installed, or explode if recharged, disassembled or heated.

MAINTENANCE

- Handle the game carefully.
- Store the game away from dusty or dirty areas.
- Keep the game away from moisture or temperature extremes.
- Do not disassemble the game. If a problem occurs, press the reset button. If problems continue, remove and replace the batteries – or try new batteries. If problems still continue, consult your warranty card for replacement instructions.
- Only batteries of the same or equivalent type as recommended are to be used.
- Do not mix old and new batteries.
- Do not mix alkaline, standard (carbon-zinc) or rechargeable (nickel-cadmium) batteries.
- Do not use rechargeable batteries.
- Do not attempt to recharge non-rechargeable batteries.
- Remove any exhausted batteries from the game.
- The supply terminals are not to be short-circuited.

ADULT SUPERVISION IS RECOMMENDED WHEN CHANGING BATTERIES.

Keep this manual because it contains important information.

TM, © & © 1997 Radica China Ltd.

US Pat. Pending