



# Instructions

5+



J0828-0920

Body Jewelry / Medical Grade Adhesive: Acrylates/Acrylamide Copolymer, Polyethylene, Simethicone.

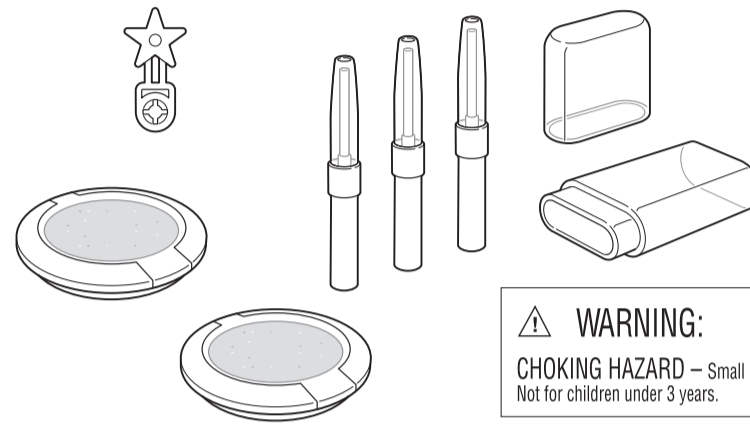
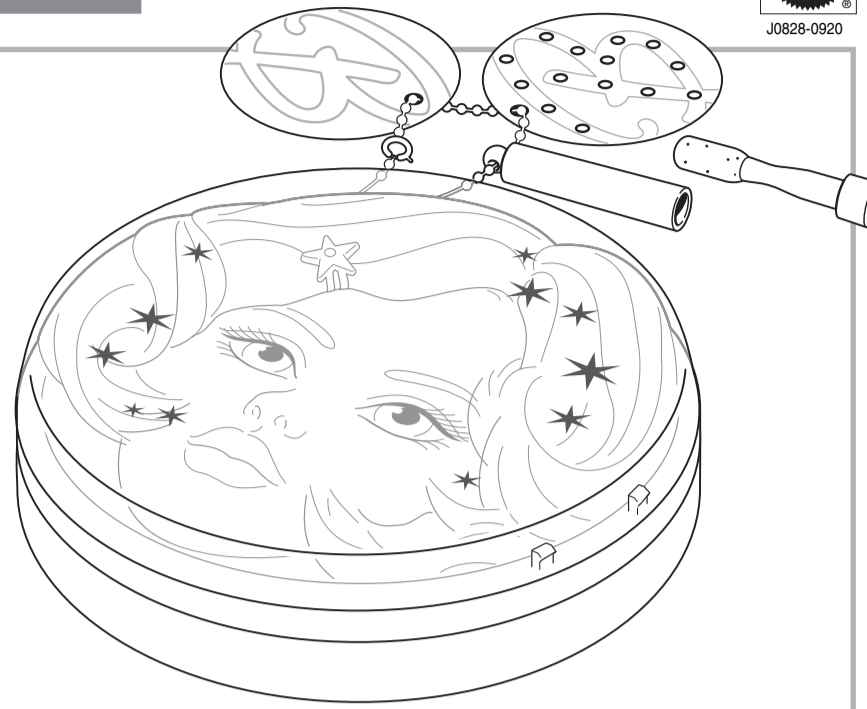
**Lip Gloss:** Mineral Oil, Polybutene, Trimethylolpropane Triisostearate, Tocopheryl Acetate, Polyethylene Terephthalate, Stearyl Alcohol, Propylparaben May Contain: Carmine (CI 75470), FD&C Blue No. 1 AI Lake (CI 42090), Manganese Violet (CI 77742).

**Liner:** Ricinus Communis (Castor) Seed Oil, 2-Ethylhexyl Palmitate, Copernicia Cerifera (Carnauba) Wax, Titanium Dioxide, Mica, Ozokerite, Polyethylene, Beeswax, Lanolin, Propylparaben, Methylparaben **May Contain:** Iron Oxides, Carmine (CI 75470), FD&C Blue No. 1 AI Lake (CI 42090), FD&C Red No. 40 AI Lake (CI 16035), FD&C Yellow No. 5 AI Lake (CI 19140), Manganese Violet (CI 77742).

**Eye Shadow:** Ricinus Communis (Castor) Seed Oil, 2-Ethylhexyl Palmitate, Copernicia Cerifera (Carnauba) Wax, Titanium Dioxide, Mica, Ozokerite, Polyethylene, Beeswax, Lanolin, Propylparaben, Methylparaben **May Contain:** Iron Oxides, Carmine (CI 75470), FD&C Blue No. 1 AI Lake (CI 42090), FD&C Red No. 40 AI Lake (CI 16035), FD&C Yellow No. 5 AI Lake (CI 19140), Manganese Violet (CI 77742).

The cosmetics in this product have been sealed with a tamper-evident seal. If this seal is broken, do not use this product and call 1-(800) 524-TOYS for a replacement.

Mattel Canada Inc., Mississauga, Ontario L5R 3W2. You may call us free at 1-800-665-6288. • Mattel U.K. Ltd., Vanwall Business Park, Maidenhead SL6 4UB. Helpline: 01628500303. service.mattel.com/uk • Mattel Australia Pty., Ltd., Richmond, Victoria, 3121. Consumer Advisory Service - 1300 135 312. • Mattel East Asia Ltd., Room 1106, South Tower, World Finance Centre, Harbour City, Tsimshatsui, HK, China. • Diimport & Diedarkan Oleh: Mattel SEA Ptd Ltd. (993532-P) Lot 13.5, 13th Floor, Menara Lien Hoe, Persiaran Tropicana Golf Country Resort, 47410 PJ. Tel: 03-78803817, Fax: 03-78803867. • Mattel, Inc., El Segundo, CA 90245 U.S.A. Consumer Affairs 1 (800) 524-TOYS.



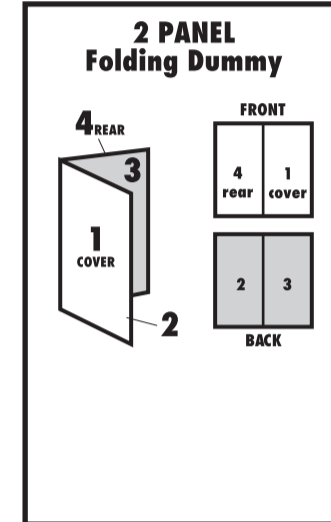
**WARNING:**  
CHOKING HAZARD - Small parts.  
Not for children under 3 years.

Colors and decorations may vary.

**CONTENTS:** Please remove everything from the package and compare to the contents shown here. If any items are missing, please contact your local Mattel office. Keep these instructions for future reference as they contain important information.

We want you to have fun playing with our products so please give us your feedback by filling out the short On-line survey. Go to <https://www.secure.mattel.com/elisten/surveys/J0828/J0828.html>

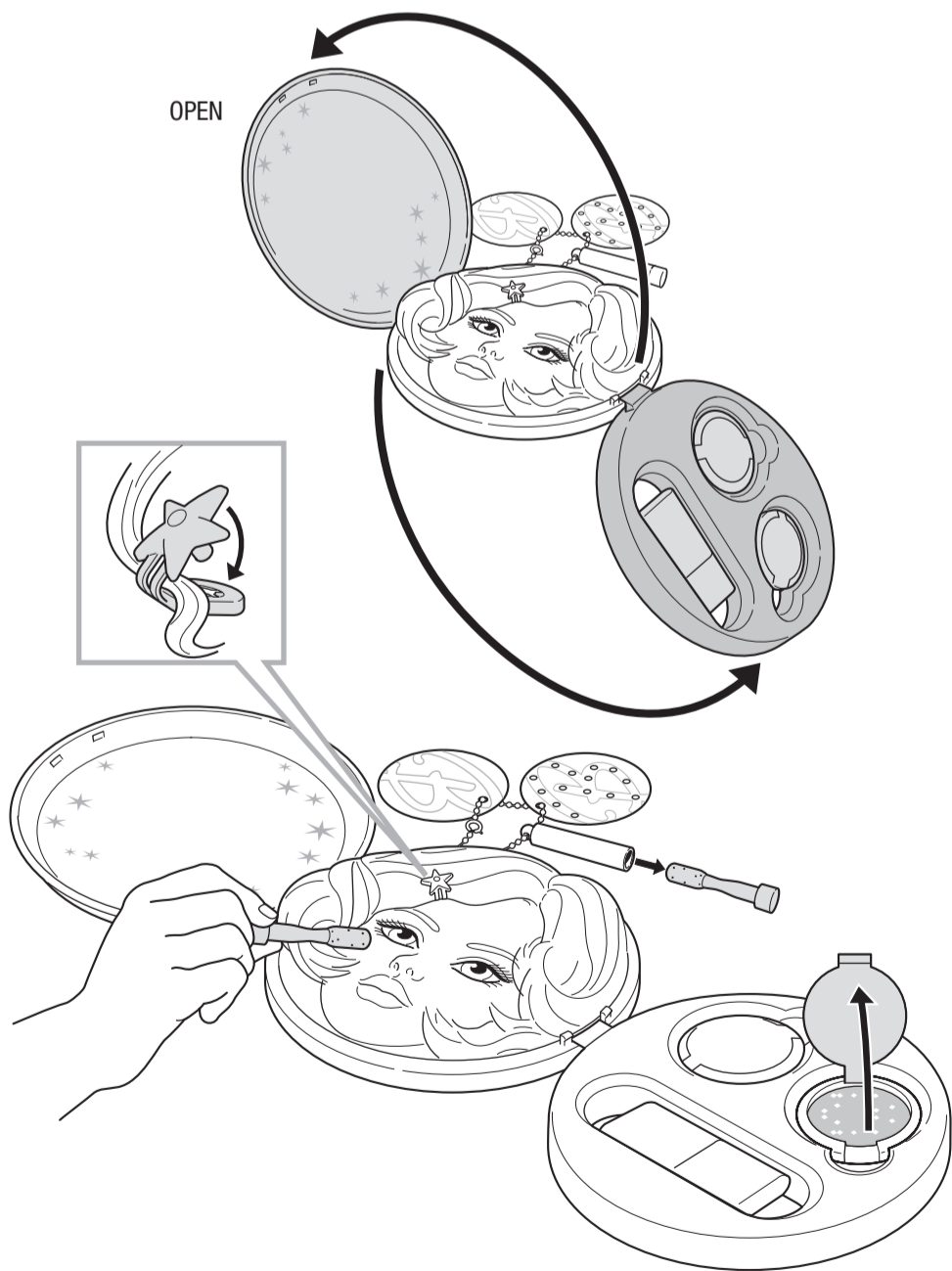
| INSTRUCTION SHEET SPECIFICATIONS |                 |
|----------------------------------|-----------------|
| Toy:                             | FF Stylin Head  |
| Toy No.:                         | J0828/MA700     |
| Part No.:                        | 0920            |
| Trim Size:                       | 5.5" W x 8.5" H |
| Folded Size:                     | N/A             |
| Type of Fold:                    | N/A             |
| # colors:                        | One             |
| Colors:                          | Black           |
| Paper Stock:                     | White Offset    |
| Paper Weight:                    | 70 lb.          |
| EDM No.:                         |                 |



2 Rear

1 Cover

**PLAYTIME!** Cosmetics may stain fabrics and other surfaces. Avoid contact with carpet, clothing, walls and furniture. This product may stain or stick to some surfaces. Protect play area before use.



Remove the make-up with soap and water.