

# Fisher-Price®

J9163

Please keep this instruction sheet for future reference, as it contains important information.

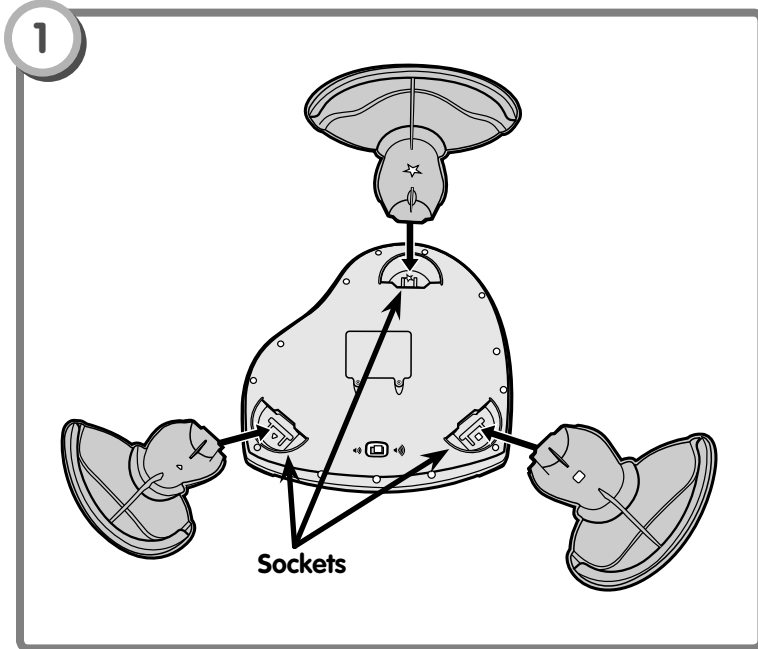
Requires three "C" batteries (included).

Adult assembly is required.

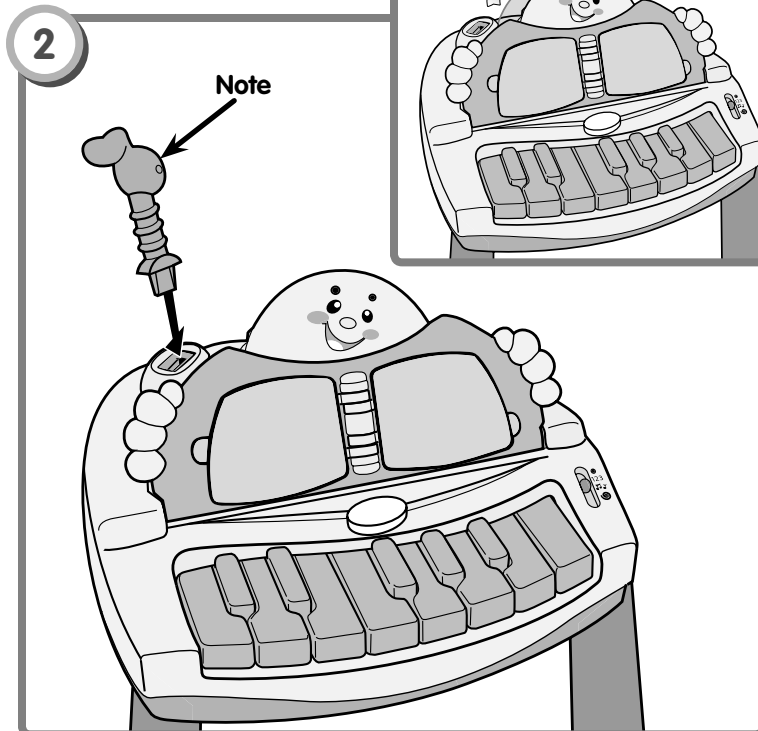
Tool required for battery replacement: Phillips screwdriver (not included).



## Assembly



- Carefully turn the piano face down. Fit and "snap" each leg into the sockets on the piano.
- Set the piano upright.



- Lift the songbook into place.
- Insert and "snap" the note into the slot in the top of the piano.

## 3 Ways to Play and Learn - 123 Learning Time, 🎵 Musical Fun and 🌀 Imagination!

**123 Learning Time** - Learn about slow and fast tempo.

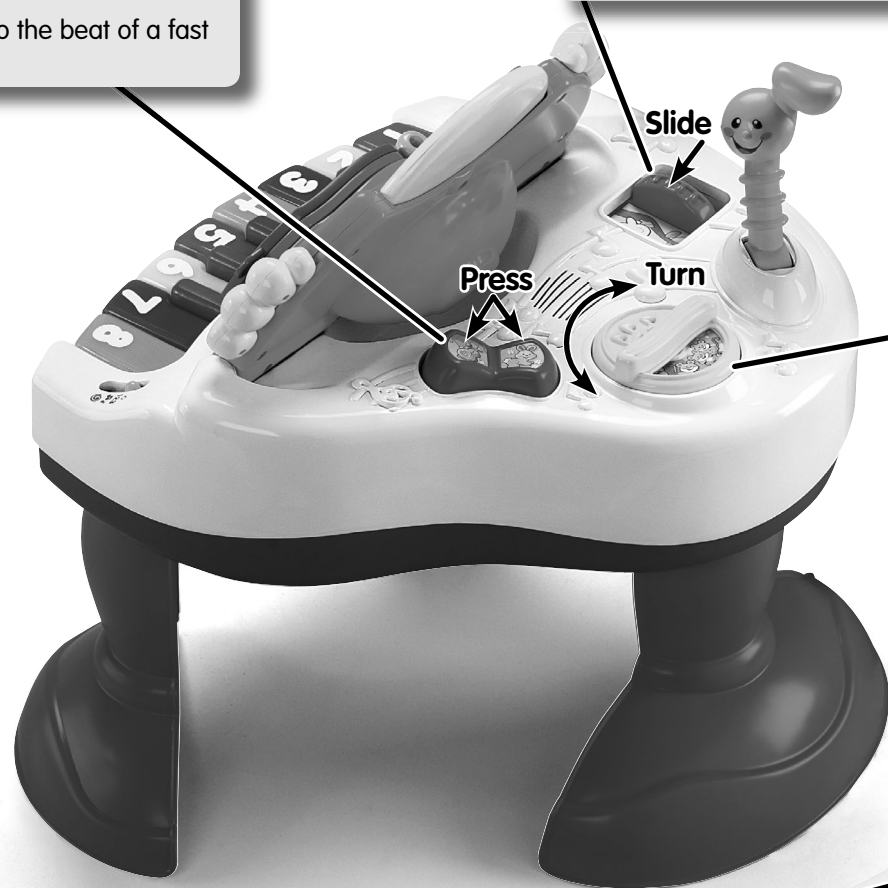
**🎵 Musical Fun** - Listen to a slow tempo song or a fast one. Press the switch while the song plays and the tempo changes during the song!

**🌀 Imagination** - Dance to the beat of a fast or slow drum riff.

**123 Learning Time** - Learn about low and high pitch.

**🎵 Musical Fun** - Listen to a song in a high scale or a low scale. Slide it while the song plays and the pitch changes during the song!

**🌀 Imagination** - Enjoy fun sound effects.



**123 Learning Time** - Listen to short musical ditties.

**🎵 Musical Fun** - Turn the dial to hear more short selections.

**🌀 Imagination** - Enjoy fun sound effects.

**123 Learning Time** - Listen to a learning song while each note in the song lights up each key.

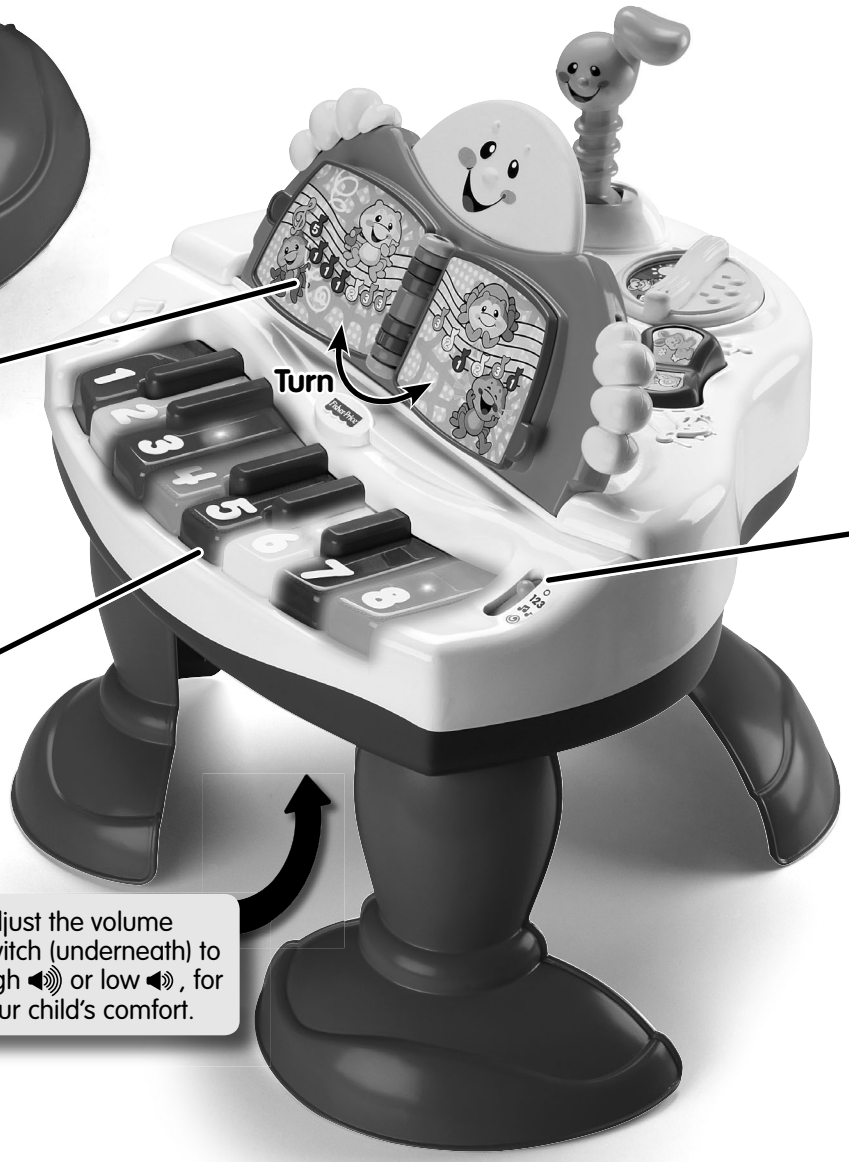
**🎵 Musical Fun** - Turn the pages to hear more fun songs.

**🌀 Imagination** - Choose a song in the songbook. Press the numbered keys to play that song!

**123 Learning Time** - Press the keys to learn colors, the notes of the scale or for counting fun!

**🎵 Musical Fun** - Press the keys to "build a song." Each time you press a key, you hear part of a song. Press another key to hear the next part.

**🌀 Imagination** - Press the keys to hear individual notes. Create your own music or follow the numbered notes in the songbook to play a song.

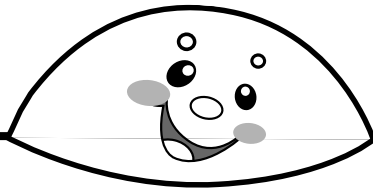


• Slide the mode switch to either **123** learning time, 🎵 musical fun or 🌀 imagination.

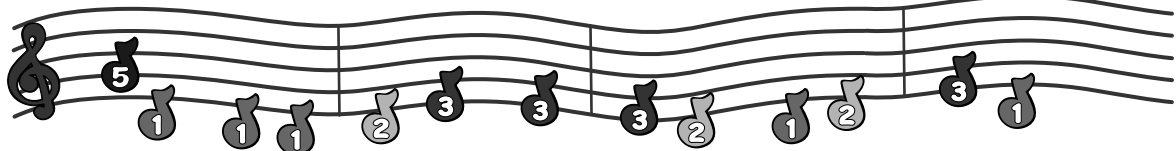
• When your child is finished playing with this toy, slide the mode switch to **O** off.

• Adjust the volume switch (underneath) to high 🗣️ or low 🗣️, for your child's comfort.

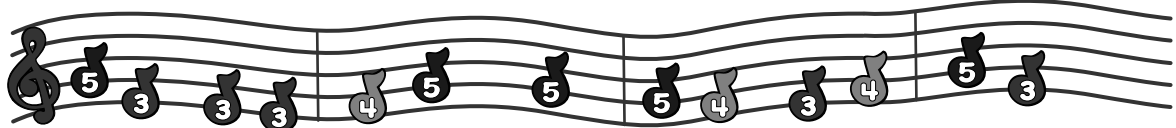
# Play a Song or Sing Along!



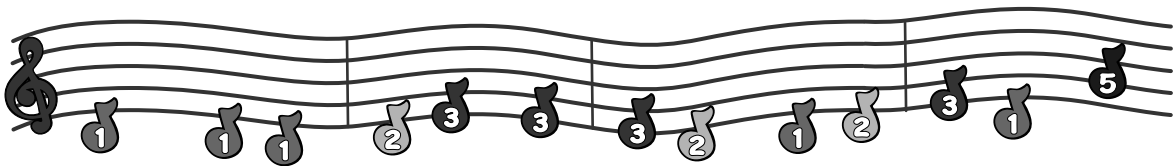
## The Silly Little Spider



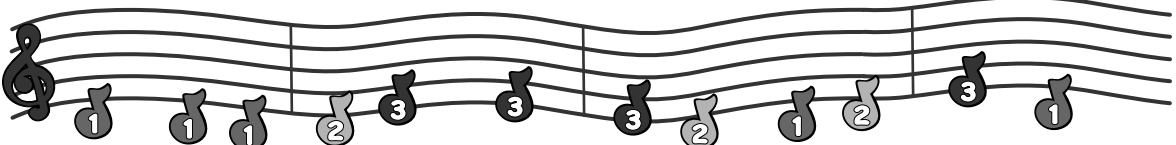
A sil - ly lit - tle spi - der climbs up the mu - sic scale



He'd like to car - ry tunes but he doesn't have a — pail - - -



Sil - ly lit - tle spi - der, just learn the—notes to sing - Then -



you can - make some mu - sic to go with ev - ery - thing

## Count With Me

*Count with me  
It's such fun*

*We can start with number one  
With a ding-dong, sing-along, music to your ear  
Have some counting fun right here!*

## Pretty Colors

*Pretty colors make you smile  
Pretty colors bright and clear  
We could sing about some colors  
We could start with colors here  
Red as an apple  
Green as a tree  
Sunshine is yellow  
Blue is the sea*

## Mary Had a Little Lamb

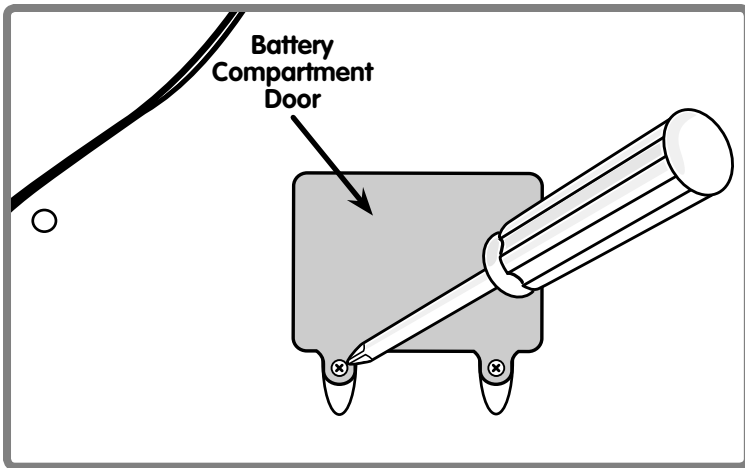
*Mary had a little lamb  
Little lamb  
Little lamb  
Mary had a little lamb  
It's fleece was white as snow*

## Can You Hear the Rhythm?

*Can you hear the rhythm?  
Can you hear the beat?  
Come on, clap your hands,  
Snap your fingers, tap your feet*

*Play on the piano  
Tap the keys a while  
Music gets you moving  
Music makes you smile!*

## Battery Replacement



**For best performance, we recommend replacing the batteries that came with this toy with three, new "C" (LR14) alkaline batteries.**

- Locate the battery compartment on the underside of the piano.
- Loosen the screws in the battery compartment door with a Phillips screwdriver. Remove the battery compartment door.
- Remove the worn batteries and throw them away.
- Insert three "C" (LR14) **alkaline** batteries, as indicated inside the battery compartment.

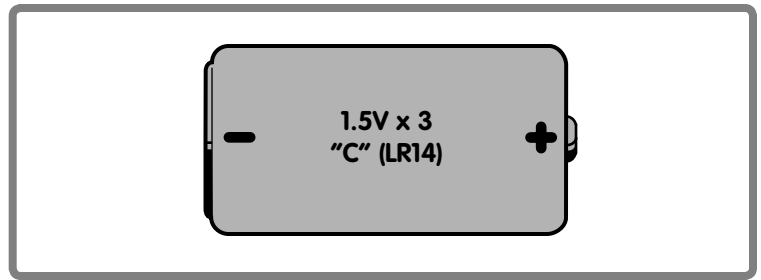
**Hint:** We recommend using **alkaline** batteries for longer battery life.

- Replace the battery compartment door and tighten the screws. Do not over-tighten.
- If this toy begins to operate erratically you may need to reset the electronics. Slide the power/mode switch off and then back on.
- When sounds, lights or motions from this toy become faint or stop, it's time for an adult to change the batteries!



- Protect the environment by not disposing of this product with household waste (2002/96/EC). Check your local authority for recycling advice and facilities (Europe only).

## Battery Safety Information



**In exceptional circumstances, batteries may leak fluids that can cause a chemical burn injury or ruin your product. To avoid battery leakage:**

- Do not mix old and new batteries or batteries of different types: alkaline, standard (carbon-zinc) or rechargeable (nickel-cadmium).
- Insert batteries as indicated inside the battery compartment.
- Remove batteries during long periods of non-use. Always remove exhausted batteries from the toy. Dispose of batteries safely. Do not dispose of this product in a fire. The batteries inside may explode or leak.
- Never short-circuit the battery terminals.
- Use only batteries of the same or equivalent type, as recommended.
- Do not charge non-rechargeable batteries.
- Remove rechargeable batteries from the product before charging.
- If removable, rechargeable batteries are used, they are only to be charged under adult supervision.

## Care

- Wipe this toy with a clean cloth dampened with a mild soap and water solution. Do not immerse this toy.
- This toy has no consumer serviceable parts. Do not take this toy apart.

# Consumer Information



## CONSUMER ASSISTANCE

Call toll free: 1-800-432-5437 (US & Canada only)  
M-F 9AM to 7PM / SAT 11AM to 5PM (EST)

[service.fisher-price.com](http://service.fisher-price.com)

Write to us at: Fisher-Price® Consumer Relations,  
636 Girard Avenue, East Aurora, New York 14052.

Hearing-impaired consumers using TTY/TDD equipment,  
please call 1-800-382-7470.

For countries outside the United States:

Canada: Mattel Canada Inc., 6155 Freemont Blvd.,  
Mississauga, Ontario L5R 3W2; [www.service.mattel.com](http://www.service.mattel.com).

Great Britain: Mattel UK Ltd, Vanwall Business Park,  
Maidenhead SL6 4UB, Helpline: 01628 500303,  
[www.service.mattel.com/uk](http://www.service.mattel.com/uk)

Australia: Mattel Australia Pty. Ltd., 658 Church Street,  
Locked Bag #870, Richmond, Victoria 3121 Australia.  
Consumer Advisory Service 1300 135 312.

New Zealand: 16-18 William Pickering Drive,  
Albany 1331, Auckland.

Asia: Mattel East Asia Ltd, Room 1106, South Tower,  
World Finance Centre, Harbour City, Tsimshatsui, HK, China.

### FCC Statement (United States Only)

This equipment has been tested and found to comply with the limits for a Class B digital device, pursuant to Part 15 of the FCC Rules. These limits are designed to provide reasonable protection against harmful interference in a residential installation. This equipment generates, uses and can radiate radio frequency energy and, if not installed and used in accordance with the instructions, may cause harmful interference to radio communications. However, there is no guarantee that interference will not occur in a particular installation. If this equipment does cause harmful interference to radio or television reception, which can be determined by turning the equipment off and on, the user is encouraged to try to correct the interference by one or more of the following measures:

- Reorient or relocate the receiving antenna.
- Increase the separation between the equipment and receiver.
- Consult the dealer or an experienced radio/TV technician for help.

Note: Changes or modifications not expressly approved by the manufacturer responsible for compliance could void the user's authority to operate the equipment.

This device complies with Part 15 of the FCC Rules.

Operation is subject to the following two conditions: this device may not cause harmful interference and this device must accept any interference received, including interference that may cause undesired operation.

### ICES-003

- This Class B digital apparatus complies with Canadian ICES-003.
- Operation is subject to the following two conditions:  
(1) this device may not cause harmful interference and  
(2) this device must accept any interference received, including interference that may cause undesired operation.

### NMB-003

- Cet appareil numérique de la classe B est conforme à la norme NMB-003 du Canada.
- L'utilisation de ce dispositif est autorisée seulement aux conditions suivantes : (1) il ne doit pas produire de brouillage et (2) l'utilisateur du dispositif doit être prêt à accepter tout brouillage radioélectrique reçu, même si ce brouillage est susceptible de compromettre le fonctionnement du dispositif.