

fisher-price

**THOMAS  
& FRIENDS™**

## DIESEL'S LIFT & LOAD CONSTRUCTION SET



Adult assembly required.

MATTEL

### INSTRUCTIONS

**JBW20**

Keep these instructions for future reference as they contain important information.

## What's Included



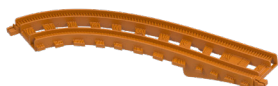
BS2



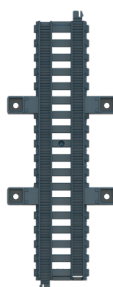
x2



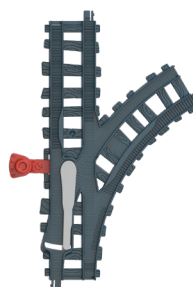
AR



AL



TU4



TR



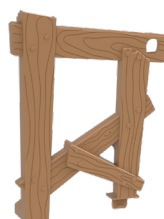
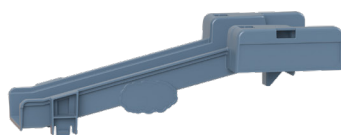
CU4



C x2



BT2



# Assembly

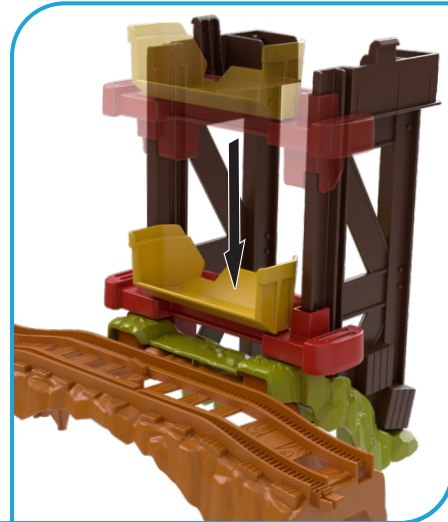
[illegible]

Diagram illustrating the assembly of the back of the car body. Two brown plastic pieces are shown being attached to the yellow base. Arrows indicate the direction of attachment, and exclamation marks highlight the connection points.

4



This step shows the bridge structure being attached to the tracks. The bridge is a brown plastic structure with two vertical supports and a horizontal beam. The beam is being placed on top of the two vertical supports, which are already attached to the tracks. The beam has a yellow and red piece on top, which is being placed on the beam. The beam is being placed on the tracks, which are already attached to the base.



5

TU4

This diagram shows a yellow locomotive being placed onto a dark grey track. Two black arrows point from the locomotive to the track, indicating the correct placement. A circular label with the text 'TU4' is positioned near the track.

6

Diagram illustrating Step 6: Placing the bridge structure. A large wooden bridge structure is shown being lowered onto the yellow car on the track. The structure consists of two main vertical supports and a horizontal beam. A yellow warning sign with an exclamation mark is visible on the right support. Arrows indicate the downward movement of the bridge onto the car.

**7**

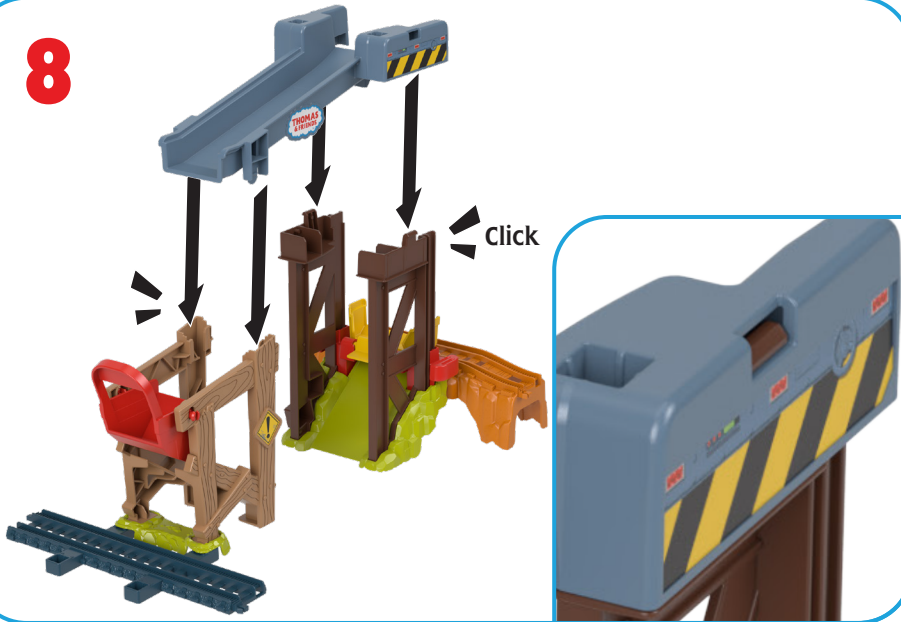
Click

This diagram shows the red bucket being attached to the wooden structure. A curved arrow indicates the bucket is moved from above and then snapped onto the structure. A black arrow points to the connection point with the word "Click". A yellow warning sign is visible on the right side of the structure.



# Assembly

8



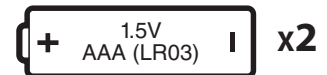
9



## Battery Information

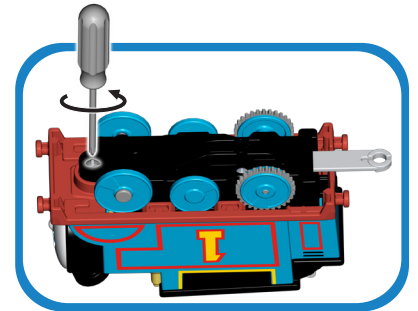
### REQUIRES:

- Phillips screwdriver (not included) for battery installation.
- Two AAA (LR03) **alkaline** batteries (not included).



### BATTERY INSTALLATION

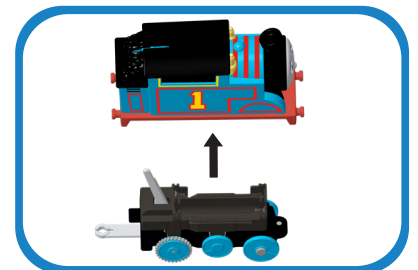
Access the battery compartment by loosening the screw in the bottom of the engine and separating the top half of the engine from the bottom half of the engine. Install the batteries as indicated inside the battery compartment. Re-assemble the halves of the engine and tighten the screw. If the engine begins to malfunction, first check battery installation. You may need to reset the electronics by removing the batteries and reinstalling them. If the engine continues to malfunction or no longer operates, it's time to replace the batteries with fresh batteries. For longer life, use **alkaline** batteries.



### BATTERY SAFETY INFORMATION

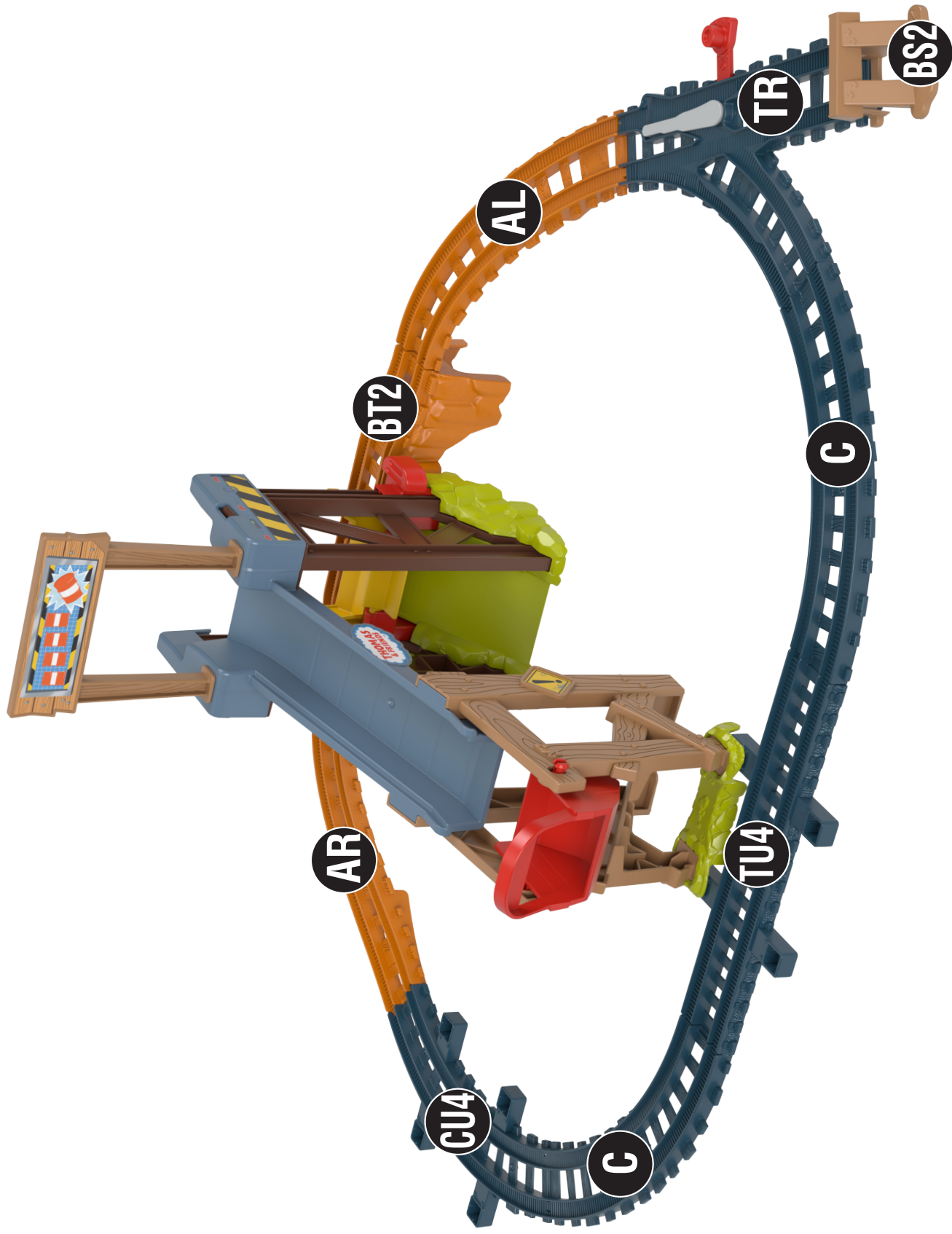
In exceptional circumstances batteries may leak fluids that can cause a chemical burn injury or ruin your product. To avoid battery leakage:

- Non-rechargeable batteries are not to be recharged.
- Rechargeable batteries are to be removed from the product before being charged.
- Rechargeable batteries are only to be charged under adult supervision.
- Do not mix alkaline, standard (carbon-zinc), or rechargeable batteries.
- Do not mix old and new batteries.
- Only batteries of the same or equivalent type as recommended are to be used.
- Batteries are to be inserted with the correct polarity (+ and -).
- Exhausted batteries are to be removed from the product.
- The supply terminals are not to be short-circuited.
- Dispose of batteries safely.
- Do not dispose of this product in a fire. The batteries inside may explode or leak.



Protect the environment by not disposing of this product or any batteries with household waste. This symbol indicates that this product shall not be treated as household waste. Check your local authority for recycling advice and facilities.

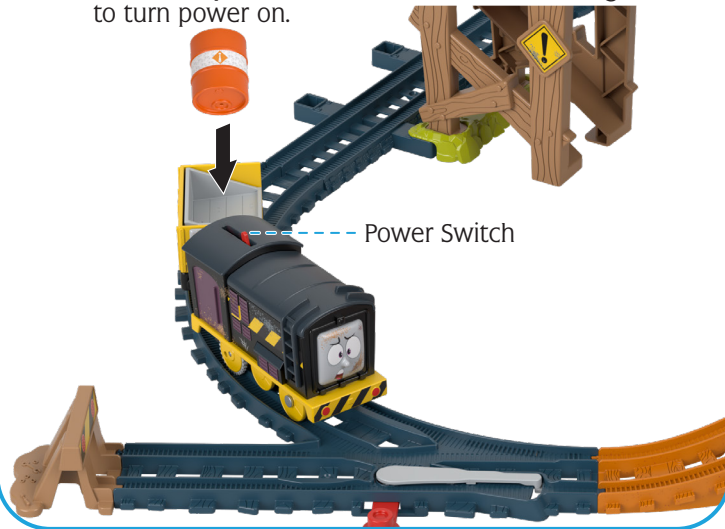
## Track Layout





# Let's Play!

- 1** Place Diesel with Troublesome Truck™ on the track. Load a barrel into Troublesome Truck™. Flip the switch on the back of the engine to turn power on.



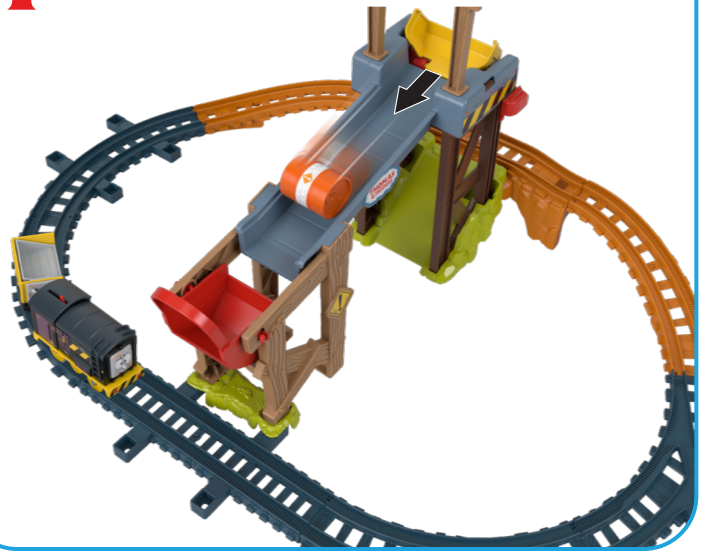
- 2** The barrel falls into the elevator as Troublesome Truck™ passes by.



- 3** Manually raise the elevator to the top.



- 4** The barrel falls into the bucket.

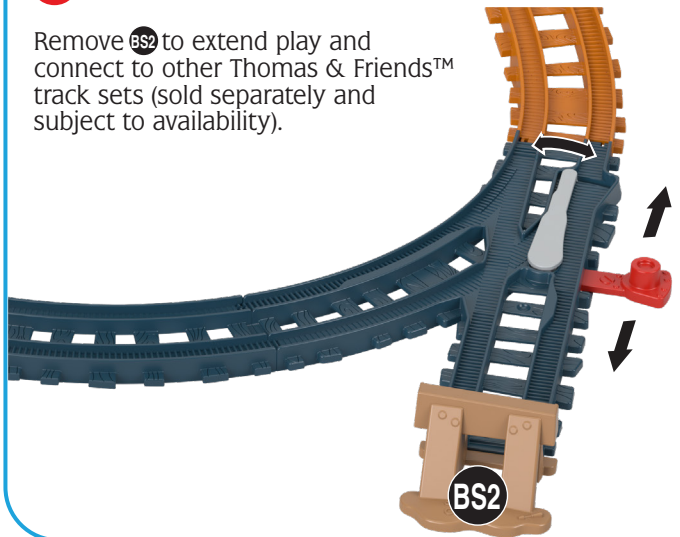


- 5** Tip the bucket when the train passes by to load the barrel into Troublesome Truck™.

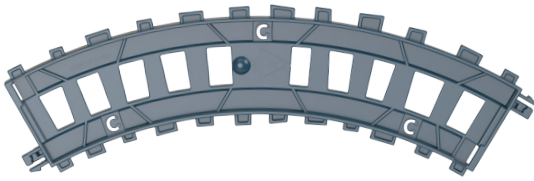


- 6** Use the switch track to change tracks.

Remove BS2 to extend play and connect to other Thomas & Friends™ track sets (sold separately and subject to availability).



# Helpful Hints



Look for codes on the bottom of each track.

Some engines may not work on this track set.



Assembly steps marked with a star indicate a permanent assembly. Once these parts are assembled, they can't be taken apart.



This set includes tracks with a bend so that the engine can climb up and travel down!



## UNITED STATES

Fisher-Price, Inc., 636 Girard Avenue, East Aurora, NY 14052.  
Consumer Services: 1-800-432-5437.

## CANADA

Mattel Canada Inc., 6155 Freemont Blvd., Mississauga, Ontario L5R 3W2.  
Consumer Services/Service à la clientèle : 1-800-432-5437. [www.service.mattel.com](http://www.service.mattel.com).

## GREAT BRITAIN

Mattel U.K. Limited, The Porter Building, 1 Brunel Way,  
Slough SL1 1FQ, UK. [www.service.mattel.com/uk](http://www.service.mattel.com/uk).

## NEDERLAND

Mattel Europa B.V., Gondel 1, 1186 MJ Amstelveen, Nederland.

## AUSTRALIA

Mattel Australia Pty. Ltd., 658 Church Street, Locked Bag #870, Richmond, Victoria 3121 Australia.  
Consumer Advisory Service 1300 135 312.

## NEW ZEALAND

16-18 William Pickering Drive, Albany 1331, Auckland.

## SOUTH AFRICA

Mattel South Africa (PTY) LTD, Office 102 I3, 30 Melrose Boulevard, Johannesburg 2196.



CREATED BY BRIT ALLCROFT

Based on the Railway Series by The Reverend W Awdry.

©2024 Gullane (Thomas) Limited. Thomas the Tank Engine & Friends™ and Thomas & Friends™ are trademarks of Gullane (Thomas) Limited.

©2024 HIT Entertainment Limited. HIT and the HIT logo are trademarks of HIT Entertainment Limited.

©2024 Mattel. ® and ™ designate U.S. trademarks of Mattel, except as noted. **PRINTED IN CHINA.**



JBW20-0971-1103299830-DOM

