

fisher-price®



JCY38



Mattel Europa B.V., Gondel 1, 1186 MJ Amstelveen, Nederland. Mattel, Inc., 636 Girard Avenue, East Aurora, NY 14052, U.S.A. Consumer Services 1-800-524-8697 and 1-800-432-5437 for Fisher Price products. Mattel U.K. Limited, The Porter Building, 1 Brunel Way, Slough SL1 1FQ, UK. Mattel Australia Pty. Ltd., 658 Church St., Richmond, Victoria, 3121. Consumer Advisory Service - 1300 135 312. 16-18 William Pickering Drive, Albany 1331, Auckland. Mattel Barbie (Shanghai). Trading Co., Ltd. Room 2005, 20th Floor, 899 Ruining Road, Xuhui District, Shanghai, 200232, PRC. Customer Care Line: 400-819-8658. Kids Kingdom Limited, Room 1908-9, Gala Place, 56 Dundas Street, Mongkok, Kowloon, Hong Kong, P.R.C. Customer Care Line: (852)2782-0766. CHICKABIDDY CO., LTD, F5, No. 186, Sec. 4, Nanjing E. Rd., Taipei 10595, Taiwan region. Customer Care Line: 0800 001 256. Diimport & Diedarkan Oleh: Mattel Continental Asia Sdn Bhd. Level 19, Tower 3, Avenue 7, No. 8 Jalan Kerinchi, Bangsar South, 59200 Kuala Lumpur, Malaysia. Mattel South Africa (PTY) LTD, Office 102 I3, 30 Melrose Boulevard, Johannesburg 2196.



©2025 Mattel.
JCY38-0971-DOM



CONSUMER INFORMATION



- Keep these instructions for future reference as they contain important information.



- Adult assembly is required. Tools required for assembly: Phillips screwdriver (not included), flat-blade screwdriver (not included).



- The mat, cloud squeaker, and crinkle rainbow are machine washable. Wash separately in cold water on the gentle cycle. Do not use bleach. Tumble dry on low heat. Do not iron. Do not dry clean.
- The frame and sun mirror can be wiped with a clean, damp cloth. Do not immerse.

WARNING

USING THIS PRODUCT FOR SLEEP OR NAPS CAN KILL.

Babies can turn over or roll out without warning and **CAN SUFFOCATE** in only a few minutes.

- **Use on the floor with baby on back, face-up.** Put baby on back after Tummy Time.
- **Stay near and watch baby during use.**
- **Do not use on soft surfaces or in sleep products** like cribs or bassinets. Keep blankets and other soft items out of and away from product.
- If baby falls asleep, move baby to infant sleep product, such as a crib or bassinet.

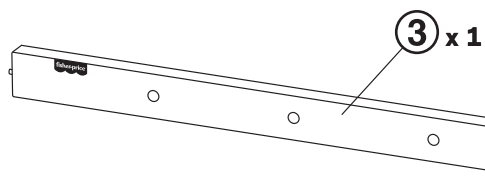
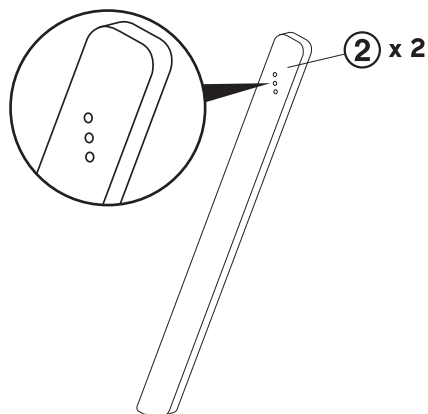
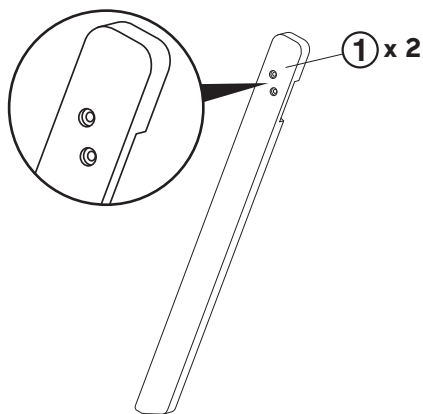
Babies have been injured from **FALLS**.

- Do not use on beds, sofas, or other raised surfaces.
- Never carry or move product with baby in it.

WARNING

- Read all instructions before using this product.
- Keep instructions for future use.
- Do not use this product if it is damaged or broken.

ASSEMBLED PARTS

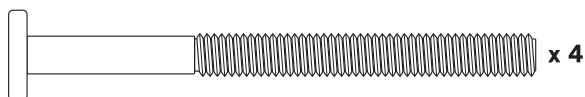


CAUTION

This package contains small parts.
For adult assembly only.

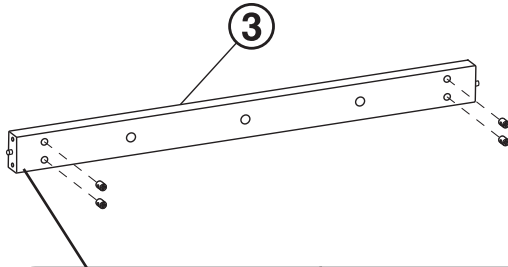


x 4

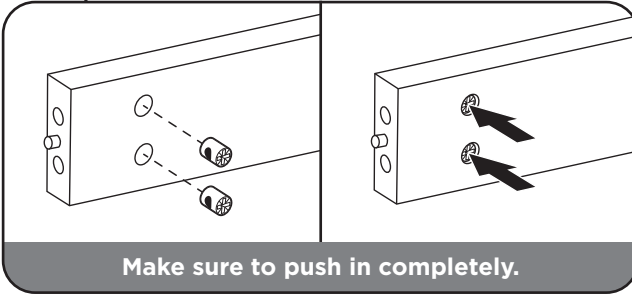


ASSEMBLY

1

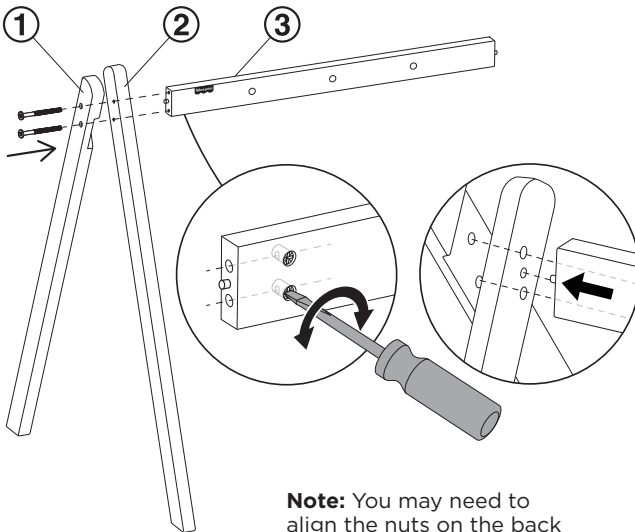


x 4



Make sure to push in completely.

2



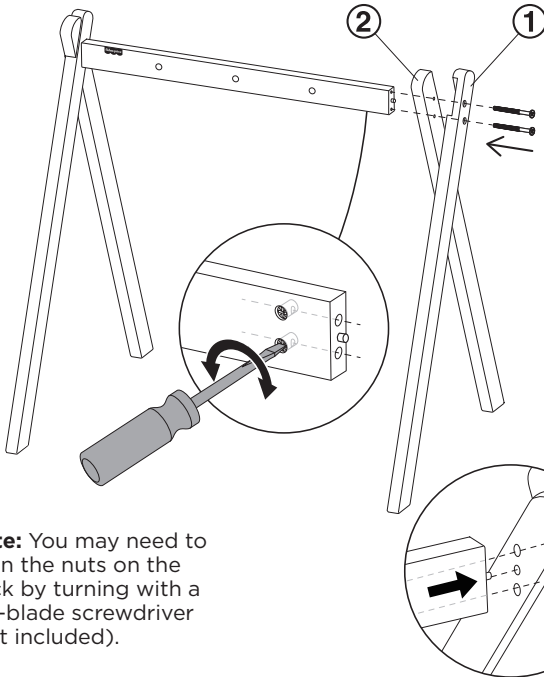
Note: You may need to align the nuts on the back by turning with a flat-blade screwdriver (not included).



x 2

ASSEMBLY

3

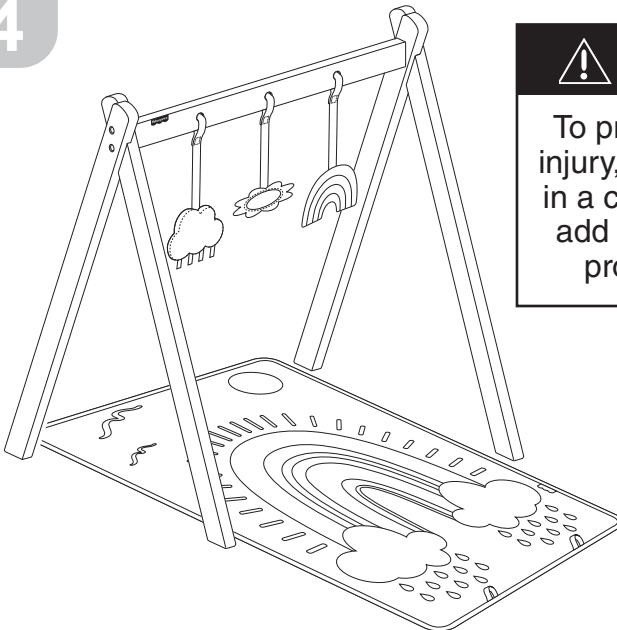


Note: You may need to align the nuts on the back by turning with a flat-blade screwdriver (not included).



x 2

4



WARNING

To prevent entanglement injury, never place the gym in a crib or playpen. Never add strings, ties or other products to the gym.