



Let's Get Ready Vanity™

INSTRUCTIONS

Please keep these instructions for future reference as they contain important information.

WHAT'S INCLUDED?

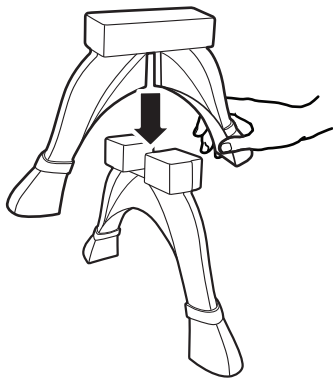
- Vanity tabletop with drawer
- 4 vanity legs
- Mirror
- Dora styling head
- Picture frame
- Stool seat
- 2 stool legs
- Over 10 styling accessories, including hair dryer, brush, crimper, curling iron, and perfume bottle.

WARNING: CHOKING HAZARD - Small parts. Not for children under 3 years.

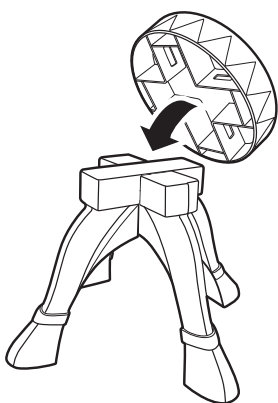
HOW TO ASSEMBLE

Assemble the stool as follows:

- Cross the stool legs and assemble as shown.

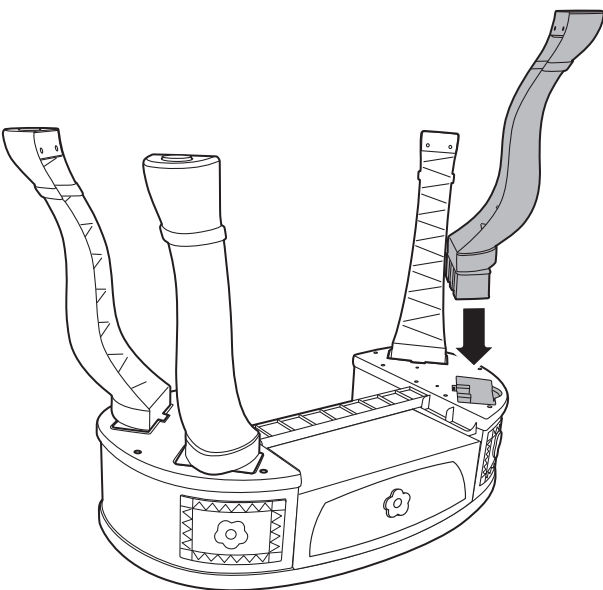


- Insert the assembled stool legs into the base as shown.

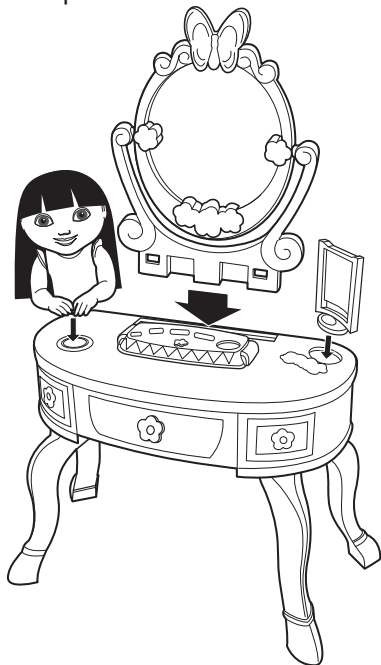


Assemble the vanity as follows:

- Insert the 4 legs into the tabletop as shown.



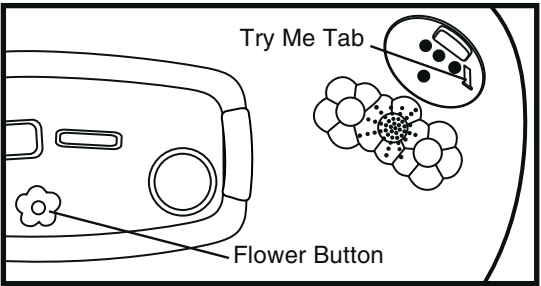
- Insert the Dora doll, mirror, and picture frame into the tabletop as shown.



NOTE: Once all of these pieces are snapped into place, they cannot be taken apart again.

BEFORE YOU BEGIN PLAY

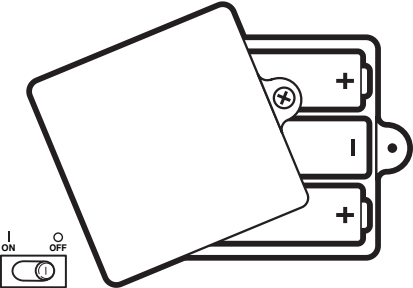
- Remove and discard the "Try Me" pull-tab from the front of the vanity for normal play function. Once the pull tab is removed, the toy will perform its full play pattern as described below.
- Be sure the ON/OFF switch is in the ON position. The ON/OFF switch is located on the bottom of the vanity, next to the battery compartment.



HOW TO PLAY

- Place one of the pictures into the picture frame to hear phrases in English and Spanish about 3 different styling adventures.
- Remove the following styling accessories from their holders to hear more styling phrases.
 - Hair dryer
 - Brush
 - Crimper
 - Curling iron
 - Perfume bottle
- You can also hear phrases by pressing the flower button found on the front of the vanity.
- You can style Dora's hair!

BATTERY INSTALLATION



Unscrew and lift away cover from bottom of product.

Replace batteries as shown. Batteries included are for demonstration purposes only.

For longer life use only alkaline batteries. Requires 3 "AA" (LR6) Batteries.

BATTERY SAFETY INFORMATION

In exceptional circumstances batteries may leak fluids that can cause a chemical burn injury or ruin your toy (product). To avoid battery leakage:

- Non-rechargeable batteries are not to be recharged.
- Rechargeable batteries are to be removed from the product before being charged (if designed to be removable).
- Rechargeable batteries are only to be charged under adult supervision (if designed to be removable).
- Do not mix alkaline, standard (carbon-zinc), or rechargeable (nickel-cadmium) batteries.
- Do not mix old and new batteries.
- Only batteries of the same or equivalent type as recommended are to be used.
- Batteries are to be inserted with the correct polarity.
- Exhausted batteries are to be removed from the product.
- The supply terminals are not to be short-circuited.
- Dispose of battery(ies) safely.
- Do not dispose of this product in a fire. The batteries inside may explode or leak.

This equipment has been tested and found to comply with the limits for a Class B digital device, pursuant to part 15 of the FCC rules. These limits are designed to provide reasonable protection against harmful interference in a residential installation. This equipment generates, uses and can radiate radio frequency energy and, if not installed and used in accordance with the instructions, may cause harmful interference to radio communications. However, there is no guarantee that interference will not occur in a particular installation. If this equipment does cause harmful interference to radio or television reception, which can be determined by turning the equipment off and on, the user is encouraged to try to correct the interference by one or more of the following measures: Reorient or relocate the receiving antenna. Increase the separation between the equipment and receiver. Connect the equipment into an outlet on a circuit different from that to which the receiver is connected. Consult the dealer or an experienced radio/TV technician for help.

Mattel Inc. 333 Continental Blvd. El Segundo, CA (310) 252-2400

NOTE: Changes or modifications not expressly approved by the manufacturer responsible for compliance could void the user's authority to operate the equipment.

© 2007 Viacom International Inc. All Rights Reserved. Nickelodeon, Nick Jr., Dora the Explorer and all related titles, logos and characters are trademarks of Viacom International Inc. Fisher-Price, Inc., a subsidiary of Mattel, Inc., East Aurora, NY 14052 U.S.A.
PRINTED IN CHINA.
Manufactured for Fisher-Price. © 2007 Mattel, Inc. All Rights Reserved. Fisher-Price and the Fisher-Price logo are U.S. trademarks of Mattel, Inc. Packaging and address should be retained for future reference.
Mattel Canada Inc., Mississauga, Ontario L5R 3W2. You may call us free at 1-800-432-5437.
Mattel U.K. Ltd., Vauxhall Business Park, Maidenhead SL6 4UB. Helpline: 01628500303.
Mattel Australia Pty., Ltd., Richmond, Victoria. 3121. Consumer Advisory Service - 1300 135 312.
Mattel East Asia Ltd., Room 1106, South Tower, World Finance Centre, Harbour City, Tsimshatsui, HK, China.
Diimport & Diedarkan Oleh: Mattel SEA Ptd Ltd (983532-P) Lot 13.5, 13th Floor, Menara Lien Hoe, Persiaran Tropicana Golf Country Resort, 47410 PJ. Tel:03-78803817, Fax:03-78803867.
Mattel, Inc., 333 Continental Blvd., El Segundo, CA 90245 U.S.A. Consumer Affairs 1 (800) 524-Toys.

CONSUMER ASSISTANCE
Call toll free: 1-800-432-5437 (US & Canada only)
M-F 9AM to 7PM / SAT 11AM to 5PM (EST)
service.fisher-price.com
Write to us at: Fisher-Price® Consumer Relations,
636 Girard Avenue, East Aurora, New York 14052.
Hearing-impaired consumers using TTY/TDD equipment,
please call 1-800-382-7470.

K4182
Fisher-Price
www.fisher-price.com

Item No : K4182-0920
Version : English
Size : 8.5 x 11"
Paper : Woodfree paper 80 gsm
Color : Black
Date : April 2, 2007 (WC)

ID: K4182-0920