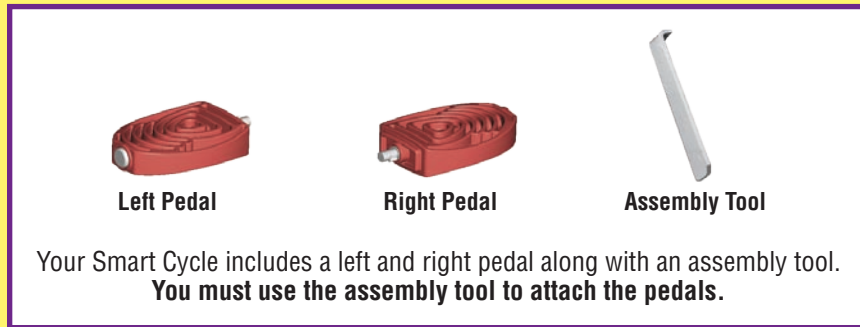


SMART CYCLE™

Assembly Tip

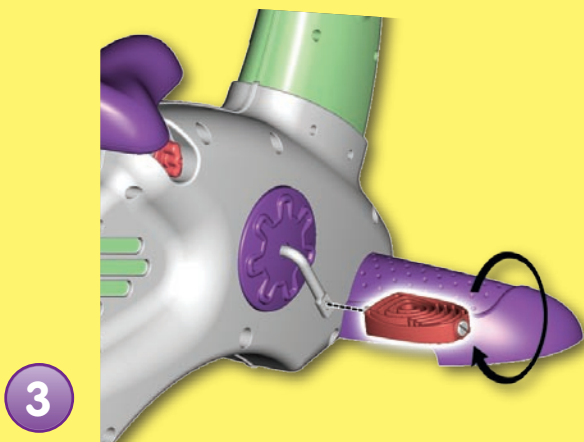
Please follow these instructions carefully to properly assemble the pedals to the Smart Cycle™.



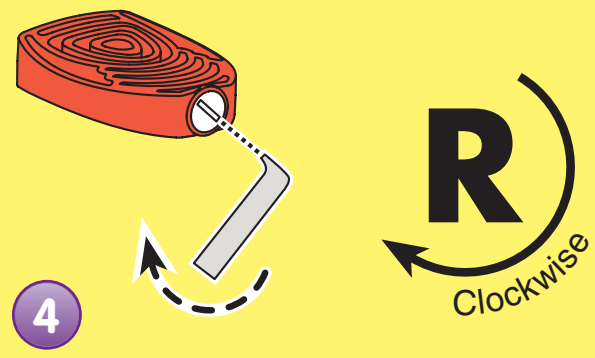
- Locate the left pedal marked with an **L** on the outside end.
- Fit the threaded end of the left pedal into the hole in the left pedal axle marked with an **L**.
- Hand-tighten the pedal by turning it **COUNTER-CLOCKWISE**.



- Fit the end of the assembly tool to the groove in the end of the pedal.
- Turn the assembly tool **COUNTER-CLOCKWISE** to fully tighten the pedal.



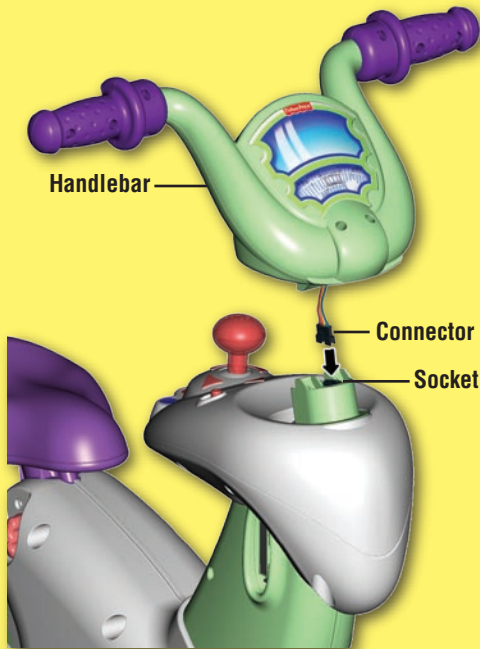
- Fit the threaded end of the right pedal (marked with an **R**) into the hole in the right pedal axle (also marked with an **R**).
- Hand-tighten the pedal by turning it **CLOCKWISE**.



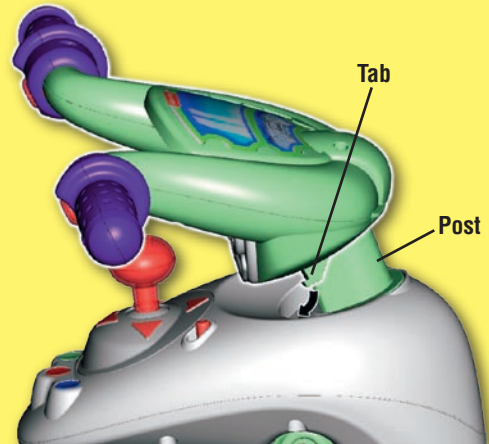
- Fit the end of the assembly tool to the groove in the end of the pedal.
- Turn the assembly tool **CLOCKWISE** to fully tighten the pedal.

Assembly Tip

Please follow these instructions carefully to properly assemble the handlebar to the Smart Cycle™.



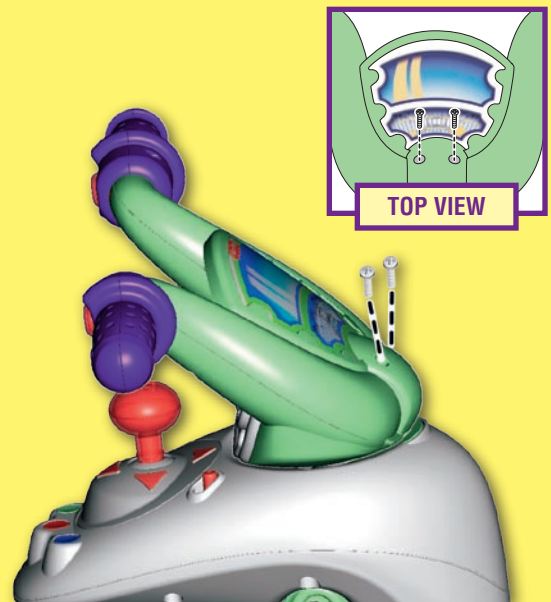
- Plug the handlebar connector into the socket in the console.
- Hint: The connector will only fit one way into the socket. If it does not seem to fit, turn it around and try again!*



- Place the handlebar, at an angle, onto the top of the post.
- Push to insert the tab on the back of the handlebar into the slot in the console.



- Next, push the handlebar forward and down to **"snap"** it in place. Make sure you hear a **"snap"**. **This may take a lot of force.**



- Insert two #8 x 1" screws into the handlebar and tighten.
- Hint: If the screws cannot be tightened, you have not assembled the handlebar properly. Remove the handlebar and refer back to Assembly steps 2 and 3.*