

Fisher-Price®

Please keep this instruction sheet for future reference, as it contains important information.

Requires three "AA" batteries (included).

Adult assembly is required.

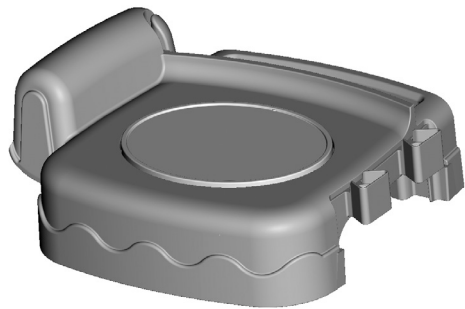
Tool required for assembly:

Phillips screwdriver (not included).

Actual product may vary from the photograph.



Parts



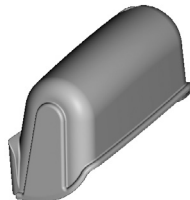
Seat Bottom



Seat Back



Table Base



Armrest

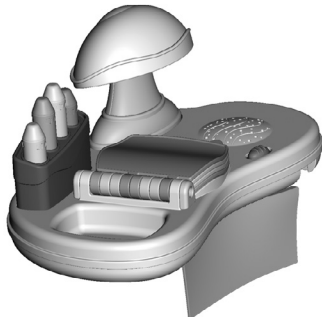
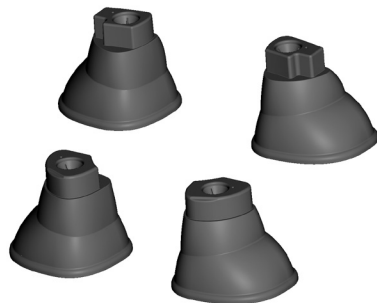


Table Top



4 Legs



**3 mm x 18 mm Screw - 2
Shown Actual Size**

Note: Tighten or loosen all screws with a Phillips screwdriver.
Do not over-tighten the screws.

Consumer Information



Call toll free: 1-800-432-5437 (US & Canada only)
M-F 9AM to 7PM / SAT 11AM to 5PM (EST)

service.fisher-price.com

Write to us at: Fisher-Price® Consumer Relations,
636 Girard Avenue, East Aurora, New York 14052.

Hearing-impaired consumers using TTY/TDD equipment,
please call 1-800-382-7470.

For countries outside the United States:

Canada: Mattel Canada Inc., 6155 Freemont Blvd.,
Mississauga, Ontario L5R 3W2; www.service.mattel.com.

Great Britain: Mattel UK Ltd, Vanwall Business Park,
Maidenhead SL6 4UB. Helpline: 01628 500303.
www.service.mattel.com/uk

Australia: Mattel Australia Pty. Ltd., 658 Church Street,
Locked Bag #870, Richmond, Victoria 3121 Australia.
Consumer Advisory Service 1300 135 312.

New Zealand: 16-18 William Pickering Drive,
Auburn 1331, Auckland.

Asia: Mattel East Asia Ltd, Room 1106, South Tower,
World Finance Centre, Harbour City, Tsimshatsui, HK, China.

FCC Statement (United States Only)

This equipment has been tested and found to comply with the limits for a Class B digital device, pursuant to Part 15 of the FCC Rules. These limits are designed to provide reasonable protection against harmful interference in a residential installation. This equipment generates, uses and can radiate radio frequency energy and, if not installed and used in accordance with the instructions, may cause harmful interference to radio communications. However, there is no guarantee that interference will not occur in a particular installation. If this equipment does cause harmful interference to radio or television reception, which can be determined by turning the equipment off and on, the user is encouraged to try to correct the interference by one or more of the following measures:

- Reorient or relocate the receiving antenna.
- Increase the separation between the equipment and receiver.
- Consult the dealer or an experienced radio/TV technician for help.

Note: Changes or modifications not expressly approved by the manufacturer responsible for compliance could void the user's authority to operate the equipment. This device complies with Part 15 of the FCC Rules. Operation is subject to the following two conditions: (1) this device may not cause harmful interference and (2) this device must accept any interference received, including interference that may cause undesired operation.

ICES-003

This Class B digital apparatus complies with Canadian ICES-003. Operation is subject to the following two conditions: (1) this device may not cause harmful interference and (2) this device must accept any interference received, including interference that may cause undesired operation.

NMB-003

Cet appareil numérique de la classe B est conforme à la norme NMB-003 du Canada. L'utilisation de ce dispositif est autorisée seulement aux conditions suivantes : (1) il ne doit pas produire de brouillage et (2) l'utilisateur du dispositif doit être prêt à accepter tout brouillage radioélectrique reçu, même si ce brouillage est susceptible de compromettre le fonctionnement du dispositif.

Care

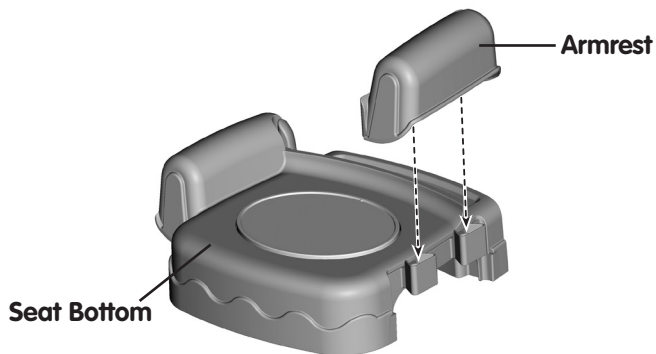
- Wipe this toy with a clean cloth dampened with a mild soap and water solution. Do not immerse this toy.
- This toy has no consumer serviceable parts. Do not take this toy apart.

Assembly

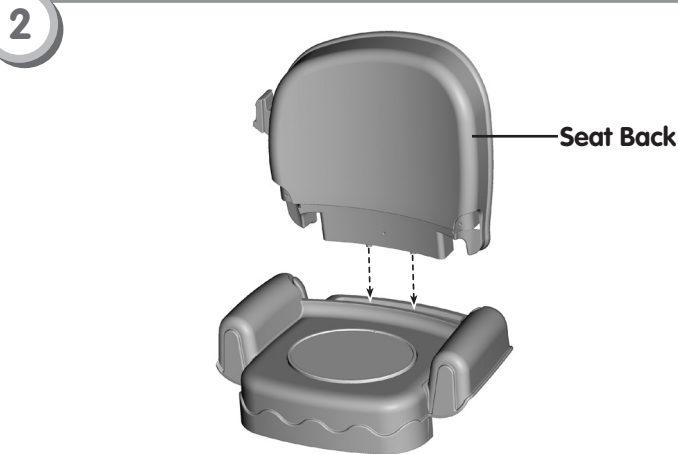
⚠ CAUTION

This package contains small parts in its unassembled state. Adult assembly is required. Take extra care during unpacking and assembly.

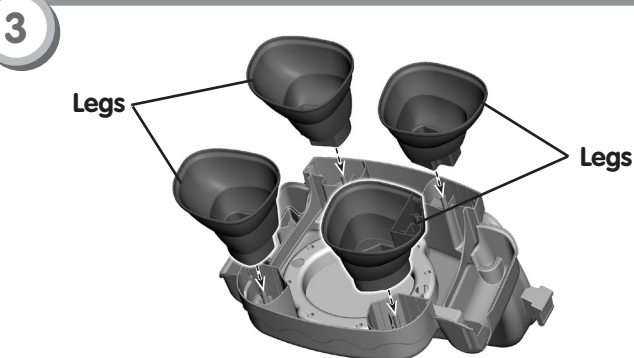
- 1** **IMPORTANT!** You must assemble the armrest to the seat bottom (step 1) BEFORE assembling the seat back (step 2).



- "Snap" the armrest onto the seat bottom.



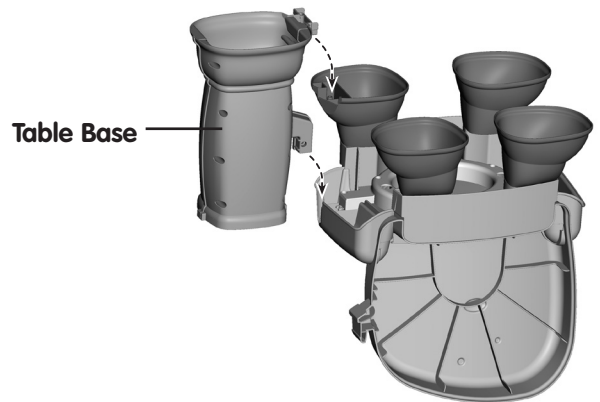
- "Snap" the seat back into the seat bottom.



- "Snap" the four legs into the underside of the seat bottom.
- Note:** Each leg fits in only one location.

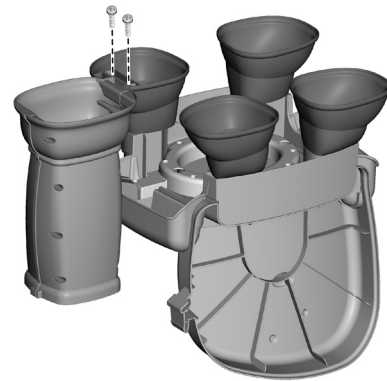
4

IMPORTANT! You must assemble the table base to the chair assembly (step 4 and 5) BEFORE assembling the table top.



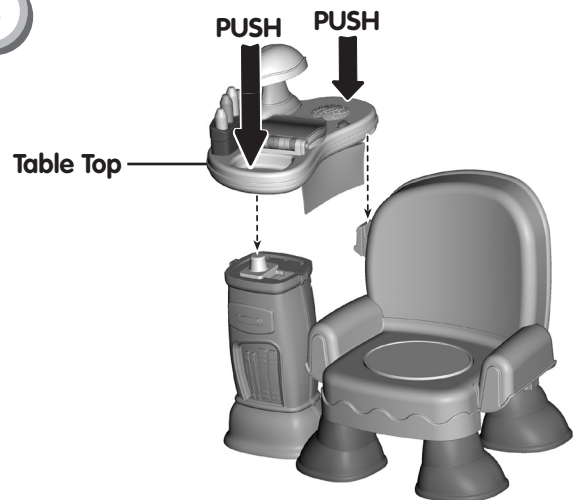
- Fit the table base onto the chair assembly, as shown.

5



- Insert two screws through the table base and into the leg. Tighten the screws.

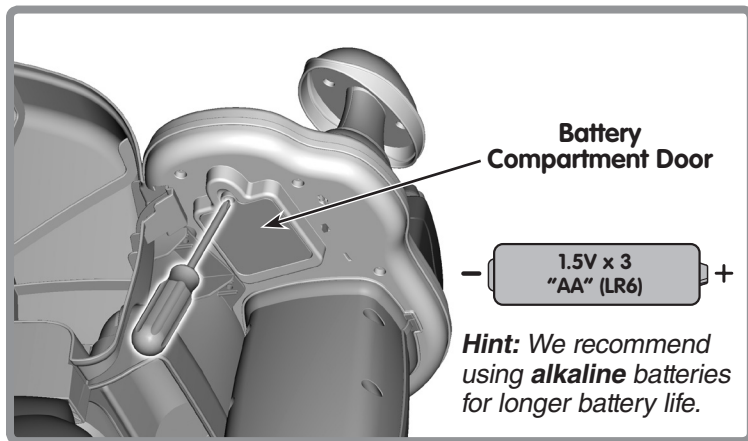
6



- Turn the assembly upright.
- Slide the table top onto the seat and the table base.
- Push firmly near the front edge and the back edge of the table top to "snap" in place.

Note: This may require some force.

Battery Replacement



For best performance, we recommend replacing the batteries that came with this toy with three, new alkaline "AA" (LR6) batteries.

- Locate the battery compartment under the table top.
- Loosen the screw in the battery compartment door. Remove the battery compartment door. Remove the batteries and throw them away.
- Insert three, new "AA" (LR6) **alkaline** batteries, as indicated inside the battery compartment.
- Replace the battery compartment door and tighten the screw.
- Press down on the seat. If you do not hear music or phrases, you may not have assembled the table top properly. Push down on the front edge to the table top until you hear a snap.
- If this toy begins to operate erratically, you may need to reset the electronics. Slide the power/mode switch off and then back on.
- When lights or sounds from this toy become faint or stop, it's time for an adult to change the batteries!



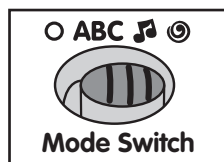
- Protect the environment by not disposing of this product with household waste (2002/96/EC). Check your local authority for recycling advice and facilities (Europe only).

Battery Safety Information

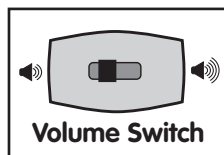
In exceptional circumstances, batteries may leak fluids that can cause a chemical burn injury or ruin your product. To avoid battery leakage:

- Do not mix old and new batteries or batteries of different types: alkaline, standard (carbon-zinc) or rechargeable (nickel-cadmium).
- Insert batteries as indicated inside the battery compartment.
- Remove batteries during long periods of non-use. Always remove exhausted batteries from the product. Dispose of batteries safely. Do not dispose of this product in a fire. The batteries inside may explode or leak.
- Never short-circuit the battery terminals.
- Use only batteries of the same or equivalent type, as recommended.
- Do not charge non-rechargeable batteries.
- Remove rechargeable batteries from the product before charging.
- If removable, rechargeable batteries are used, they are only to be charged under adult supervision.

Three Fun Play Modes!



- Slide the power/mode switch to learning **ABC**, music 🎵 or imagination 🌀 mode.
- When your child is finished playing with this toy, slide the mode switch **off** ○.



- Slide the volume switch to high 🔊 or low 🔇 volume.

ABC Learning Mode

- Turn the book pages to hear the story.
- Press the crayons or lamp to learn about colors, letters, shapes and counting. Press again to hear a song or fun phrase.
- Sit on the seat to hear fun phrases or tune. Stand up and the music stops. Sit down to resume.

🎵 Music Mode

- Turn the book pages to hear a tune.
- Press the crayons or lamp for more music.
- Sit on the seat for fun phrases and music.

🌀 Imagination

- Turn the pages to hear sound effects from the book.
- Press the crayons to hear tones.
- Press the lamp to hear a musical ditty or hear lamp "on/off" sound effects.
- Sit on the seat or stand up for sound effects.