



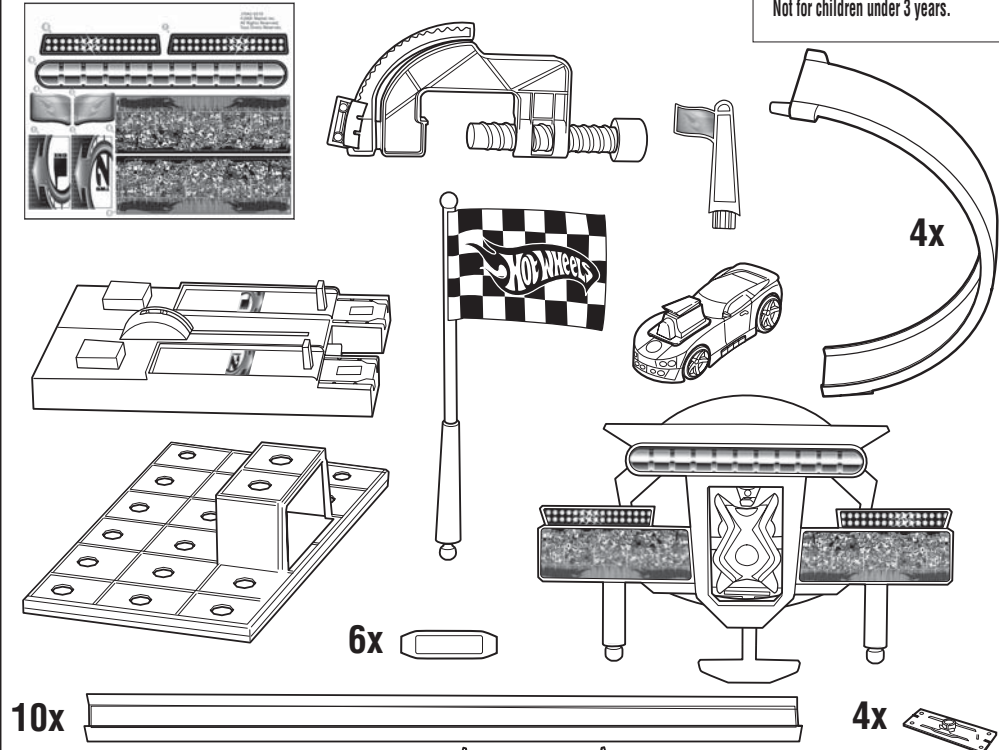
INSTRUCTIONS

SOUND-OFF STREETRACE™ TRACK SET

CONTENTS

Please keep these instructions for future reference as they contain important information.

WARNING:
CHOKING HAZARD - Small parts.
Not for children under 3 years.



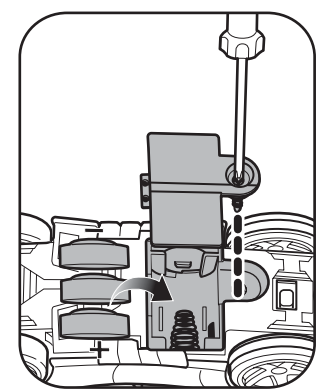
Requires 3 button-cell (AG13, LR44) batteries (not included). Batteries included are for demonstration purposes only.



© 2007 Mattel, Inc. All Rights Reserved.

Mattel, Inc., 333 Continental Blvd., El Segundo, CA 90245 U.S.A. Consumer Relations 1-800-524-8697 service.mattel.com.
 Mattel U.K. Ltd., Vanwall Business Park, Maidenhead SL6 4UB, Helpline 01628500303.
 Mattel Australia Pty., Ltd., Richmond, Victoria, 3121 Consumer Advisory Service - 1300 135 312.
 Mattel East Asia Ltd., Room 1106, South Tower, World Finance Centre, Harbour City, Tsimshatsui, HK, China.
 Diimport & Diedarkan Oleh: Mattel SEA Ptd Ltd. (993532-P) Lot 13.5, 13th Floor, Menara Lien Hoe, Persiaran Tropicana Golf Country Resort, 47410 PJ, Tel:03-78803817, Fax:03-78803867.

BATTERY INSTALLATION / REPLACEMENT



- Unscrew the battery cover with a Phillips head screwdriver (not included).
 - Remove batteries included for demonstration purposes only and dispose of them safely. Install 3 new button-cell (AG13, LR44) batteries in the orientation (+/-) shown. For best performance, use only alkaline batteries.
 - Replace battery cover and tighten screw.
 - Replace the batteries if the movement slows, the sounds are garbled, or the lights dim.
- RECYCLE INFORMATION (USA ONLY)**
 Please recycle button cell battery(ies) contained in this product by:
 • Visiting your nearest recycling center. For location of the nearest recycling center, visit us online at www.service.mattel.com.
 • If a recycling center is not available in your area, contact us for a pre-paid mailing label.
 Visit us online at www.service.mattel.com or call toll-free at 1-800-524-8697.
 • Valid in the US only.

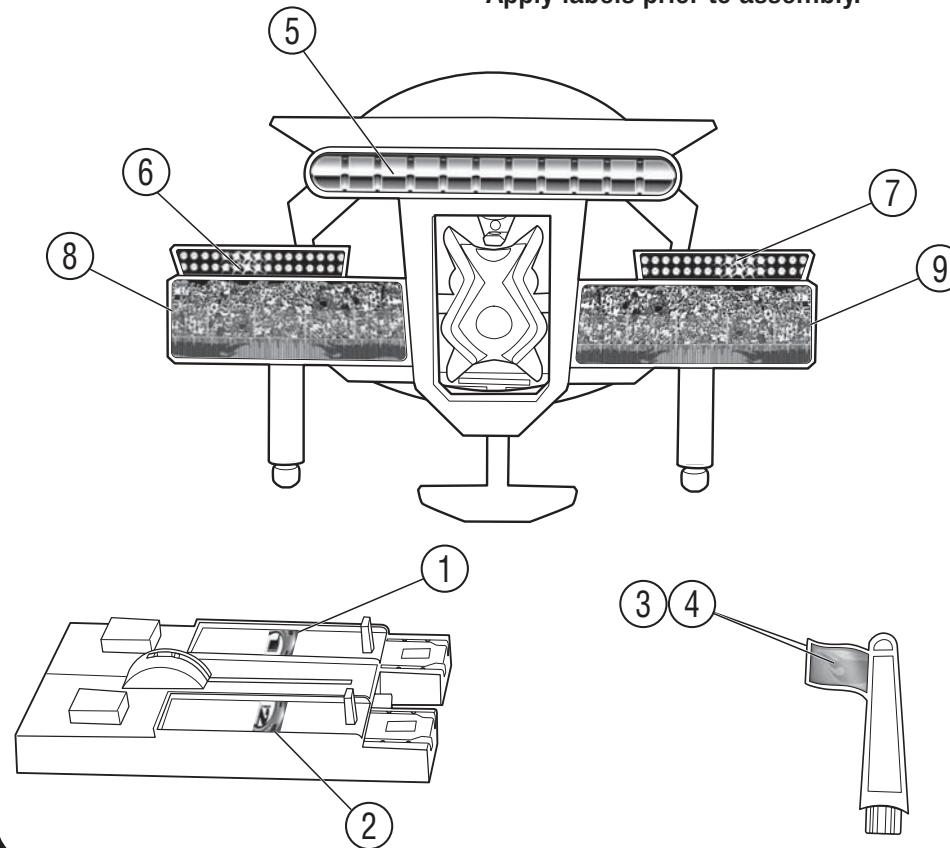
BATTERY SAFETY INFORMATION

In exceptional circumstances batteries may leak fluids that can cause a chemical burn injury or ruin your product. To avoid battery leakage:
 • Non-rechargeable batteries are not to be recharged.
 • Rechargeable batteries are to be removed from the product before being charged (if designed to be removable).
 • Rechargeable batteries are only to be charged under adult supervision (if designed to be removable).
 • Do not mix alkaline, standard (carbon-zinc), or rechargeable (nickel-cadmium) batteries.
 • Do not mix old and new batteries.

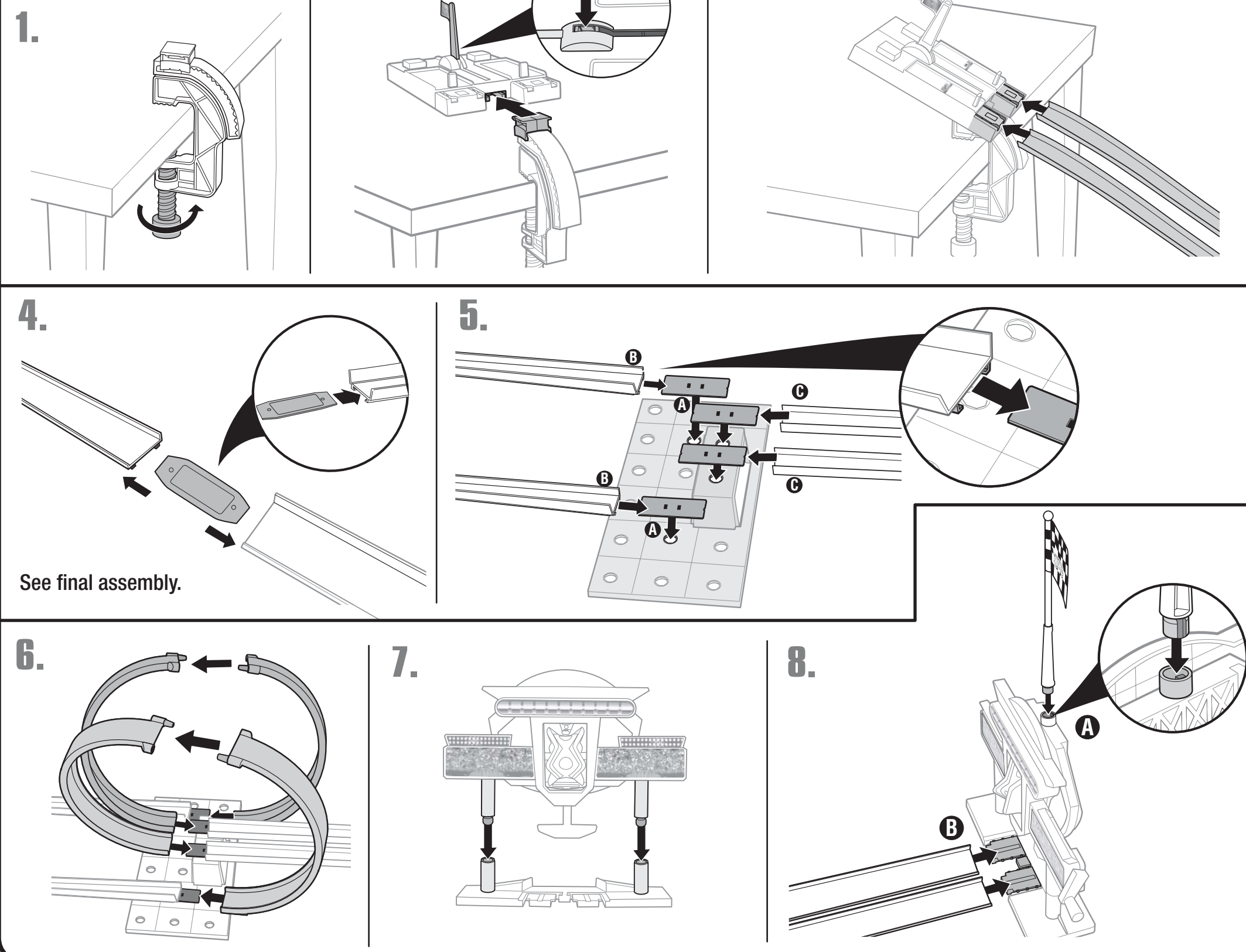
- Only batteries of the same or equivalent type as recommended are to be used.
 - Batteries are to be inserted with the correct polarity.
 - Exhausted batteries are to be removed from the product.
 - The supply terminals are not to be short-circuited.
 - Dispose of battery(ies) safely.
 - Do not dispose of this product in a fire. The batteries inside may explode or leak.
- Protect the environment by not disposing of this product with household waste [2002/96/EC]. Check your local authority for recycling advice and facilities.

APPLY LABELS

Apply labels by number as shown.
Apply labels prior to assembly.



ASSEMBLY



FINAL ASSEMBLY

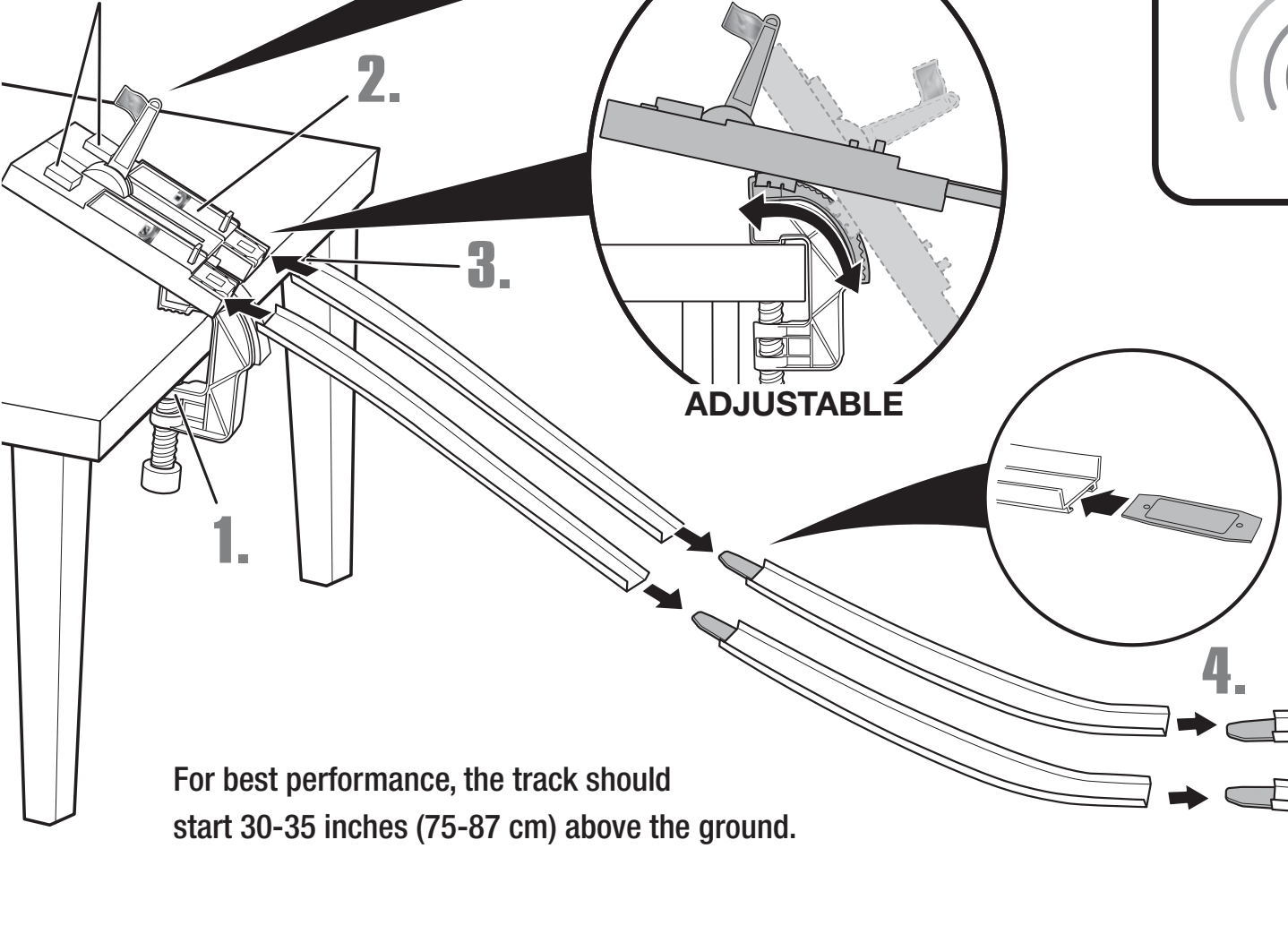
SET UP TRACK AS SHOWN.

OPERATING TIPS

Adjust track side walls at each connection point as shown.

TO STABILIZE SET: On carpet, use books. On smooth floor, tape base to surface.

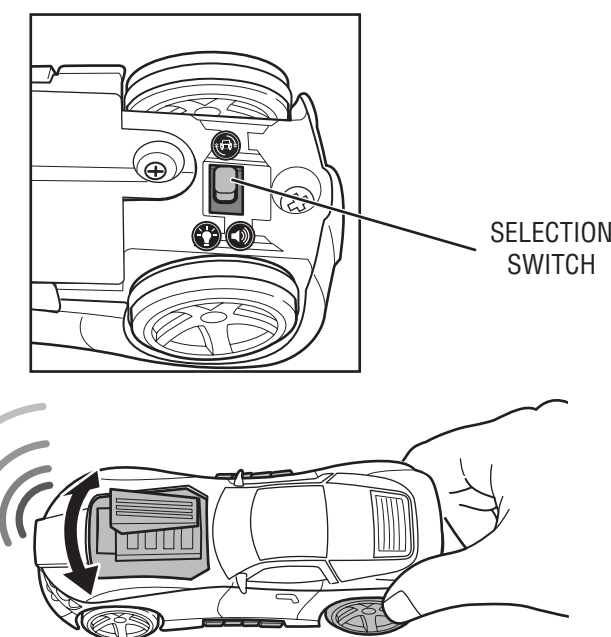
START BUTTONS



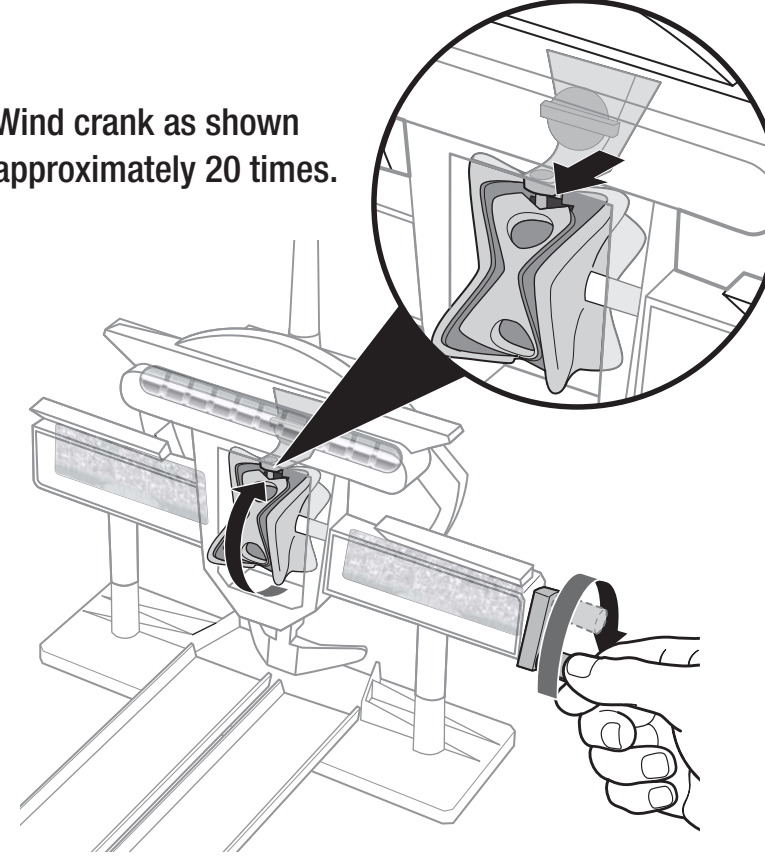
For best performance, the track should start 30-35 inches (75-87 cm) above the ground.

TO PLAY

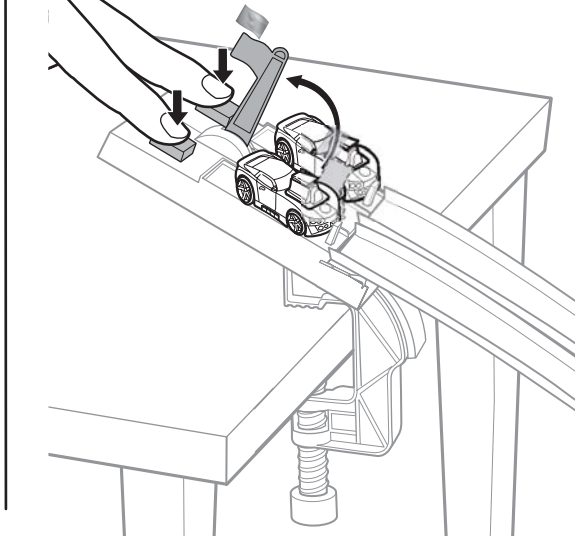
- ➊ Move the selection switch to activate vibrating engine with lights and sounds.
- ➋ Move the selection switch to activate lights and sounds ONLY.



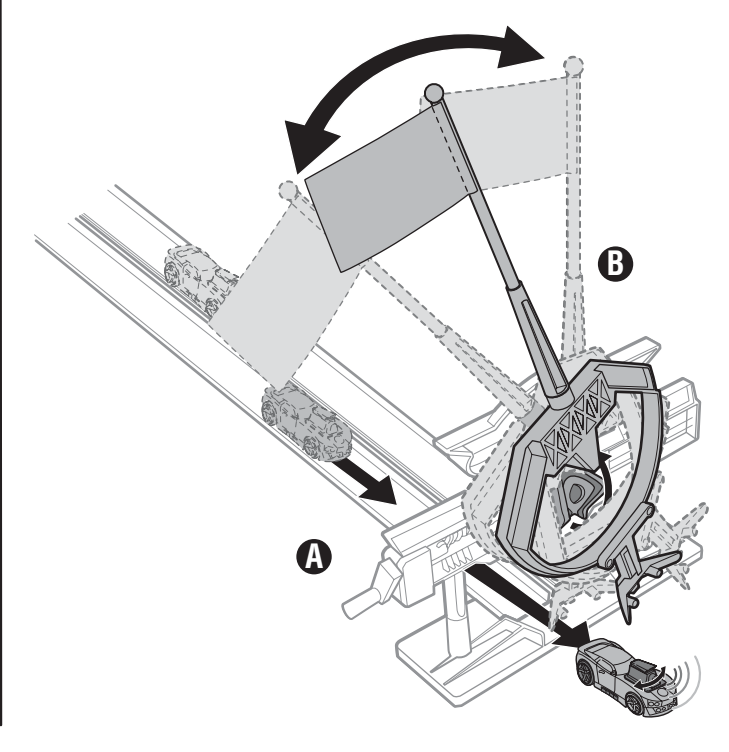
- ➌ Wind crank as shown approximately 20 times.



- ➍ Push flag down to set the timer. When flag pops up, press the start buttons to launch the cars. If you press one of the start buttons before the flag pops up, the button will lock up and your car cannot be launched.



- ➎ Flag will fall towards the winning side of the track.



REPLACE RUBBER BAND

