

Fisher-Price®

M1353

Doodle Pro™

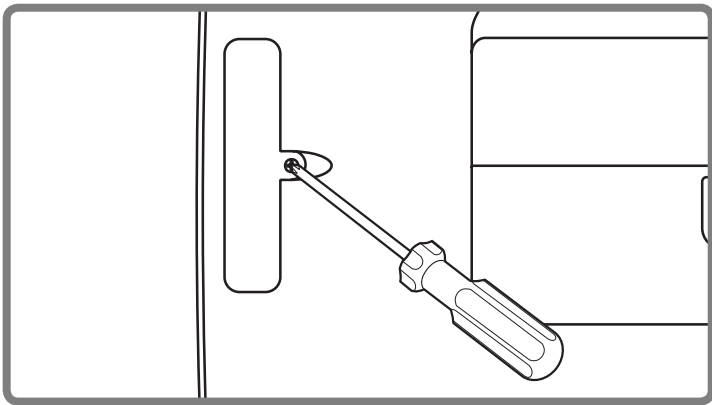


www.fisher-price.com

Consumer Information

- Please keep this instruction sheet for future reference, as it contains important information.
- Requires two "AA" batteries (included).
- Adult assembly is required for battery replacement.
- Tool required for battery replacement: Phillips screwdriver (not included).
- Wipe with a clean cloth dampened with a mild soap and water solution. Do not immerse.
- This toy has no consumer serviceable parts. Do not take this toy apart.
- Keep water, sand and dirt off this toy.

Battery Replacement



For best performance, we recommend replacing the batteries that came with this toy with two, new LR6 ("AA") alkaline batteries.

- Locate the battery compartment on the back of the toy.
- Loosen the screw in the battery compartment door with a Phillips screwdriver. Remove the battery compartment door. Remove the exhausted batteries and throw them away.
- Insert two new LR6 ("AA") **alkaline** batteries.

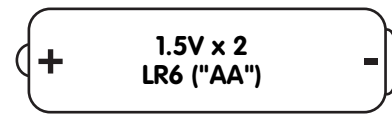
Hint: We recommend using **alkaline** batteries for longer battery life.

- Replace the battery compartment door and tighten the screw with a Phillips screwdriver. Do not over-tighten.



- Protect the environment by not disposing of this product with household waste (2002/96/EC). Check your local authority for recycling advice and facilities.

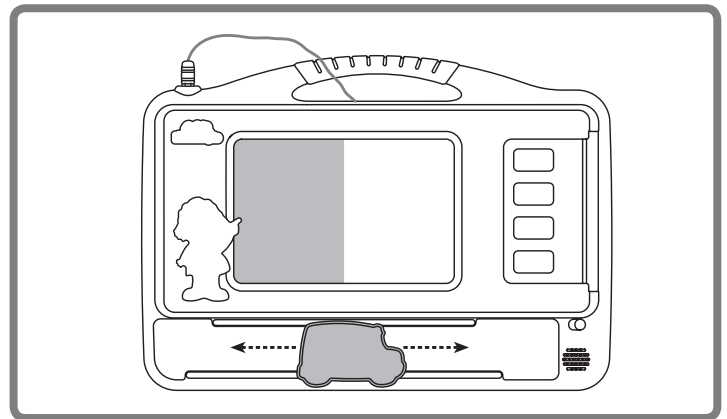
Battery Safety Information



In exceptional circumstances, batteries may leak fluids that can cause a chemical burn injury or ruin your toy. To avoid battery leakage:

- Do not mix old and new batteries or batteries of different types: alkaline, standard (carbon-zinc) or rechargeable (nickel-cadmium).
- Insert batteries as indicated inside the battery compartment.
- Remove batteries during long periods of non-use. Always remove exhausted batteries from the toy. Dispose of this product safely. Do not dispose of batteries in a fire. The batteries inside may explode or leak.
- Never short-circuit the battery terminals.
- Use only batteries of the same or equivalent type, as recommended.
- Do not charge non-rechargeable batteries.
- Remove rechargeable batteries from the toy before charging.
- If removable, rechargeable batteries are used, they are only to be charged under adult supervision.

Before First-Time Use



IMPORTANT! Before first-time use, completely darken the drawing screen with the magnetic pencil. Slide the eraser slowly from side to side to clear the drawing screen. Repeat this procedure several times to enable the drawing screen to create the clearest, darkest images.

Learning and Drawing Fun!



- Slide the power/volume switch to on with low volume ◀ or on with high volume ▶.
- Insert a learning card into the slot on the right side of the toy.
- For number cards, press a number to hear it identified.
- For letter cards, press a letter to hear it identified and learn a word that begins with that letter.
- Use the magnetic pen to create your own drawings, play games or write messages.
- Slide the eraser from side-to-side to erase the screen.
- When you are finished with the toy, slide the power/volume switch to off ○.
- Store the cards in the compartment on the back of the toy. Store the pen in the slot near the top of the toy.
- When sounds from this toy become faint or stop, it's time for an adult to change the batteries!



Important!

IMPORTANT! To avoid damage to the drawing screen:

- Use only the magnetic pencil included.
- Do not use regular pencils, pens, crayons, or markers.
- Keep this toy away from extreme heat sources such as ovens, heaters, radiators and hot vehicles.



- Do not apply heavy pressure or force to the drawing screen. Heavy pressure is not necessary and could damage the drawing screen. A light touch makes a dark line.



- Use only the special, magnetic pencil included. Do not use any other object on the drawing screen.



CONSUMER ASSISTANCE

Call toll free: 1-800-432-5437 (US & Canada only)
M-F 9AM to 7PM / SAT 11AM to 5PM (EST)

service.fisher-price.com

Write to us at: Fisher-Price® Consumer Relations,
636 Girard Avenue, East Aurora, New York 14052.

Hearing-impaired consumers using TTY/TDD equipment,
please call 1-800-382-7470.

For countries outside the United States:

Canada: Mattel Canada Inc., 6155 Freemont Blvd.,
Mississauga, Ontario L5R 3W2; www.service.mattel.com.

Great Britain: Mattel UK Ltd, Vanwall Business Park,
Maidenhead SL6 4UB. Helpline: 01628 500303.
www.service.mattel.com/uk

Australia: Mattel Australia Pty. Ltd., 658 Church Street,
Locked Bag #870, Richmond, Victoria 3121 Australia.
Consumer Advisory Service 1300 135 312.

New Zealand: 16-18 William Pickering Drive,
Albany 1331, Auckland.

Asia: Mattel East Asia Ltd, Room 1106, South Tower,
World Finance Centre, Harbour City, Tsimshatsui, HK, China.

FCC Statement

United States Only

This equipment has been tested and found to comply with the limits for a Class B digital device, pursuant to Part 15 of the FCC Rules. These limits are designed to provide reasonable protection against harmful interference in a residential installation. This equipment generates, uses and can radiate radio frequency energy and, if not installed and used in accordance with the instructions, may cause harmful interference to radio communications. However, there is no guarantee that interference will not occur in a particular installation. If this equipment does cause harmful interference to radio or television reception, which can be determined by turning the equipment off and on, the user is encouraged to try to correct the interference by one or more of the following measures:

- Reorient or relocate the receiving antenna.
- Increase the separation between the equipment and receiver.
- Consult the dealer or an experienced radio/TV technician for help.

Note: Changes or modifications not expressly approved by the manufacturer responsible for compliance could void the user's authority to operate the equipment.