

**Tummy Time**



**Overhead Gym**

# Consumer Information



## WARNING

To prevent entanglement injury, never place the gym in a crib or playpen. Never add strings, ties or other products to the gym.

- Please keep this instruction sheet for future reference, as it contains important information.
- Requires three "AA" (LR6) **alkaline** batteries (not included) for operation.
- Adult assembly is required.
- Tool required for battery installation: Phillips screwdriver (not included).



## CONSUMER ASSISTANCE

Call toll free: 1-800-432-5437 (US & Canada only)  
M-F 9AM to 7PM / SAT 11AM to 5PM (EST)

**service.fisher-price.com**

Write to us at: Fisher-Price® Consumer Relations,  
636 Girard Avenue, East Aurora, New York 14052.

Hearing-impaired consumers using TTY/TDD equipment,  
please call 1-800-382-7470.

For countries outside the United States:

Canada: Mattel Canada Inc., 6155 Freemont Blvd.,  
Mississauga, Ontario L5R 3W2; [www.service.mattel.com](http://www.service.mattel.com).

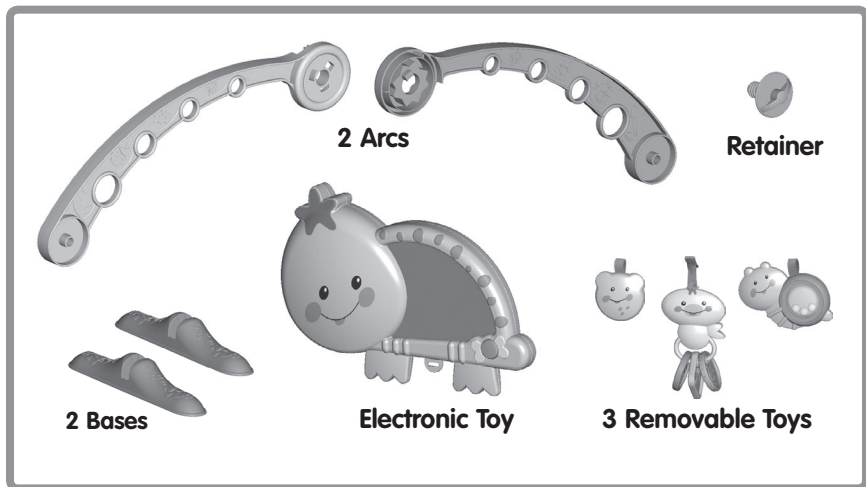
Great Britain: Mattel UK Ltd, Vanwall Business Park,  
Maidenhead SL6 4UB, Helpline: 01628 500303,  
[www.service.mattel.com/uk](http://www.service.mattel.com/uk)

Australia: Mattel Australia Pty, Ltd., 658 Church Street,  
Locked Bag #870, Richmond, Victoria 3121 Australia.  
Consumer Advisory Service 1300 135 312.

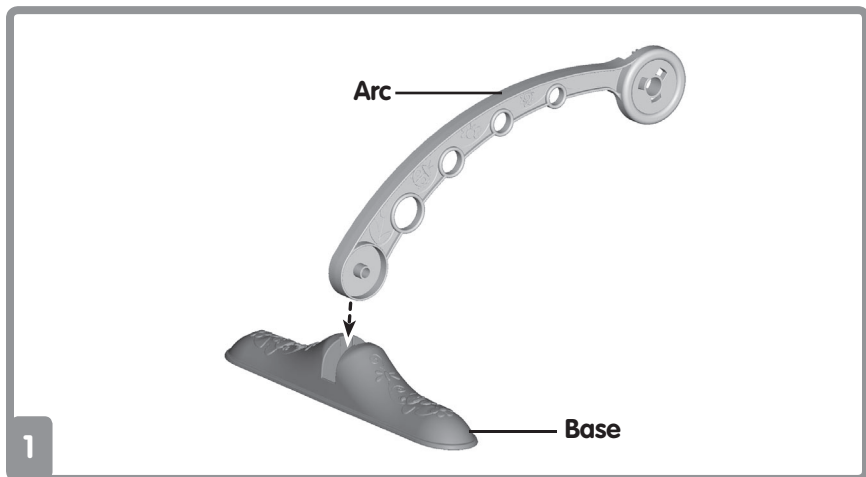
New Zealand: 16-18 William Pickering Drive,  
Albany 1331, Auckland.

Asia: Mattel East Asia Ltd, Room 1106, South Tower,  
World Finance Centre, Harbour City, Tsimshatsui, HK, China.

# Parts

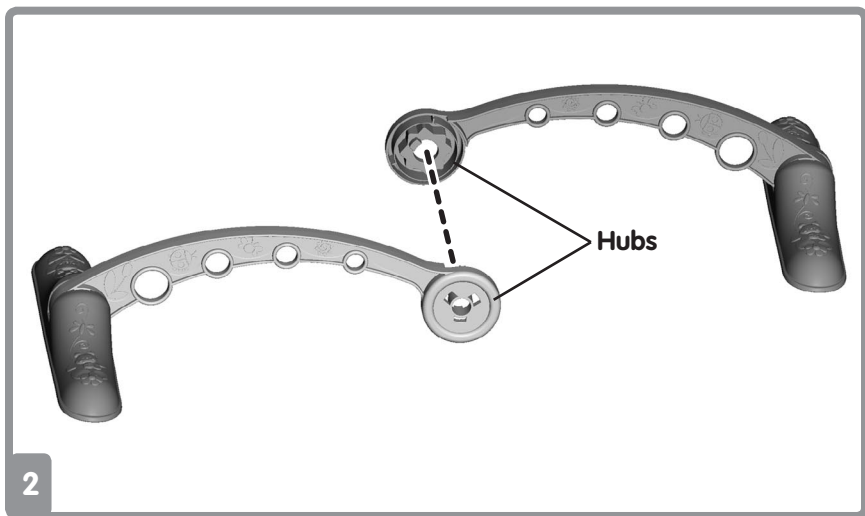


## One-Time Assembly



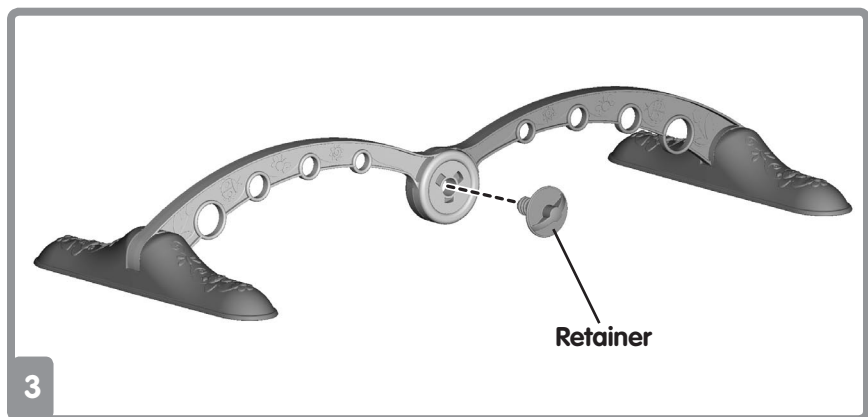
- Insert and **“snap”** the smaller end of each arc into the slot in each base.
- Pull up on each arc to be sure it is secure in the base.

# One-Time Assembly



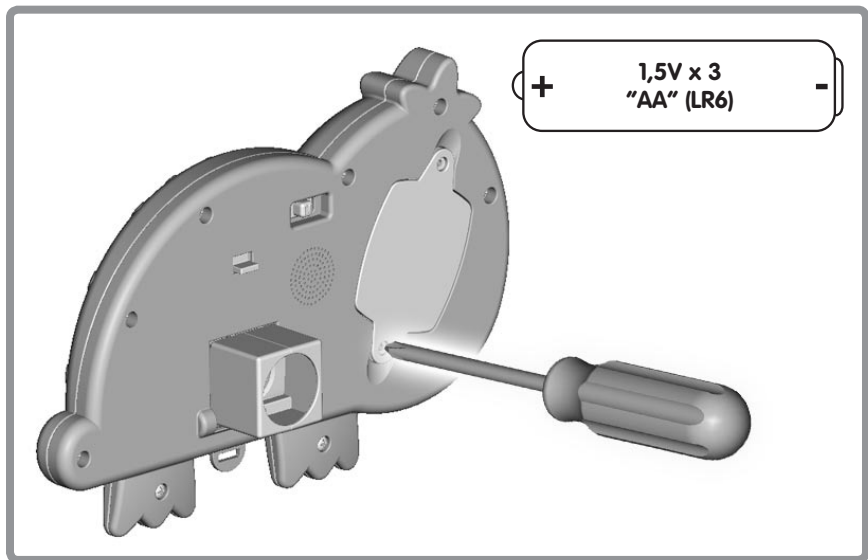
- **"Snap"** the hubs on the arcs together.

# One-Time Assembly



- Fit the retainer into the hole in the hubs.

# Battery Installation



- Locate the battery compartment door on the back of the electronic toy. Loosen the screws in the battery compartment door and lift to remove it.

**Hint:** You may need to use the tip of the screwdriver to lift the battery compartment door.

- Insert three "AA" (LR6) **alkaline** batteries.

**Hint:** We recommend using **alkaline** batteries for longer battery life.

- Replace the battery compartment door and tighten the screws.
- When sounds or lights become faint or stop, it's time for an adult to change the batteries!



- Protect the environment by not disposing of this product with household waste (2002/96/EC). Check your local authority for recycling advice and facilities (Europe only).

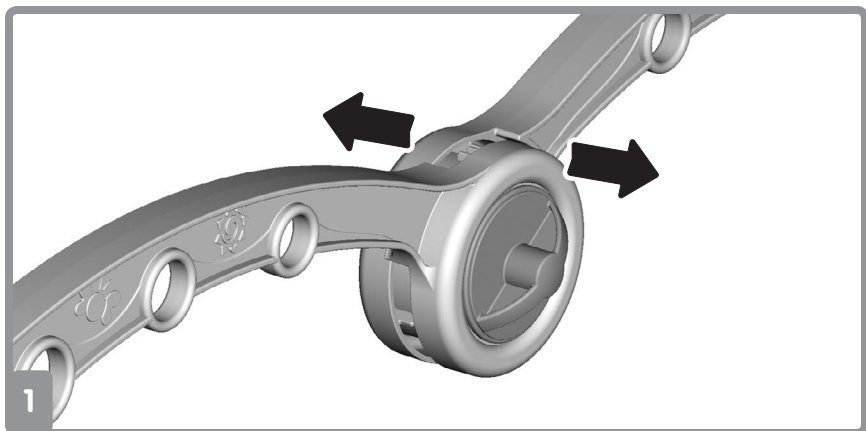
Fisher-Price, Inc., a subsidiary of Mattel, Inc. East Aurora, New York 14052, U.S.A.  
©2007 Mattel, Inc. All Rights Reserved. © and ™ designate U.S. trademarks of Mattel, Inc.

# Battery Safety Information

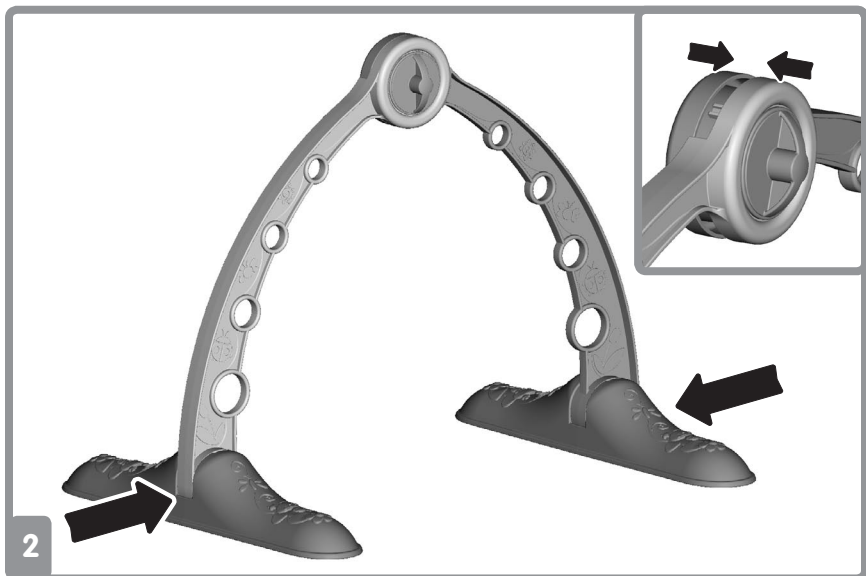
In exceptional circumstances, batteries may leak fluids that can cause a chemical burn injury or ruin your product. To avoid battery leakage:

- Do not mix old and new batteries or batteries of different types: alkaline, standard (carbon-zinc) or rechargeable (nickel-cadmium).
- Insert batteries as indicated inside the battery compartment.
- Remove batteries during long periods of non-use. Always remove exhausted batteries from the product. Dispose of batteries safely. Do not dispose of the product in a fire. The batteries inside may explode or leak.
- Never short-circuit the battery terminals.
- Use only batteries of the same or equivalent type, as recommended.
- Do not charge non-rechargeable batteries.
- Remove rechargeable batteries from the product before charging.
- If removable, rechargeable batteries are used, they are only to be charged under adult supervision.

# Overhead Gym



- Pull apart the hubs to unlock.

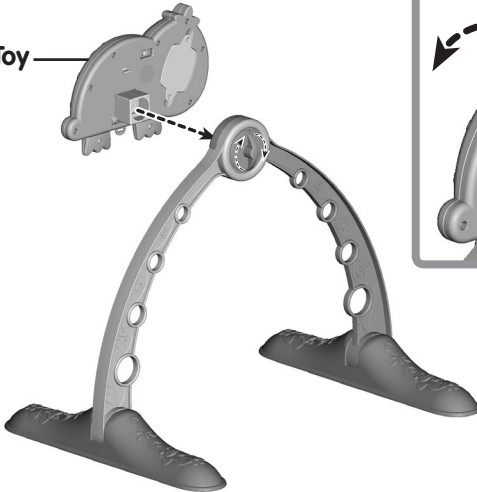


- Push the bases together to lift the arcs into an arch.
- Push the hubs together to lock in place.



# Overhead Gym

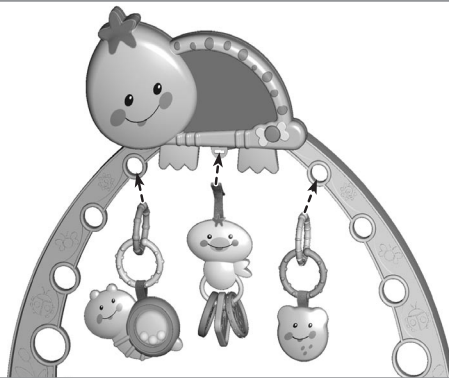
Electronic Toy



3

- Fit the electronic toy onto the end of the retainer extending at the top of the arch.
- Turn the retainer several times to tightly secure the electronic toy.

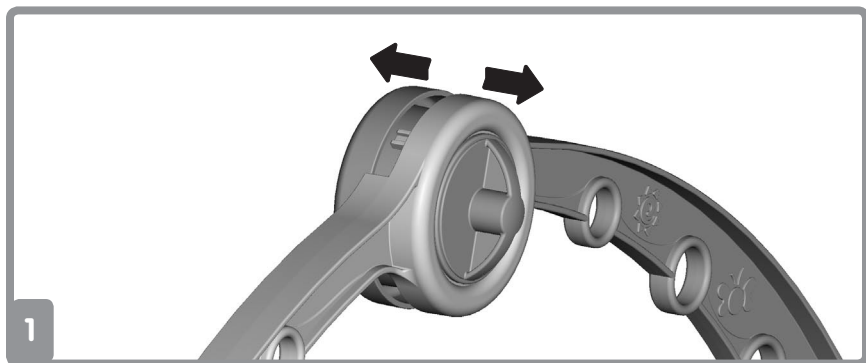
**Hint:** Slide the latch on the back of the electronic toy to tilt down for overhead gym.



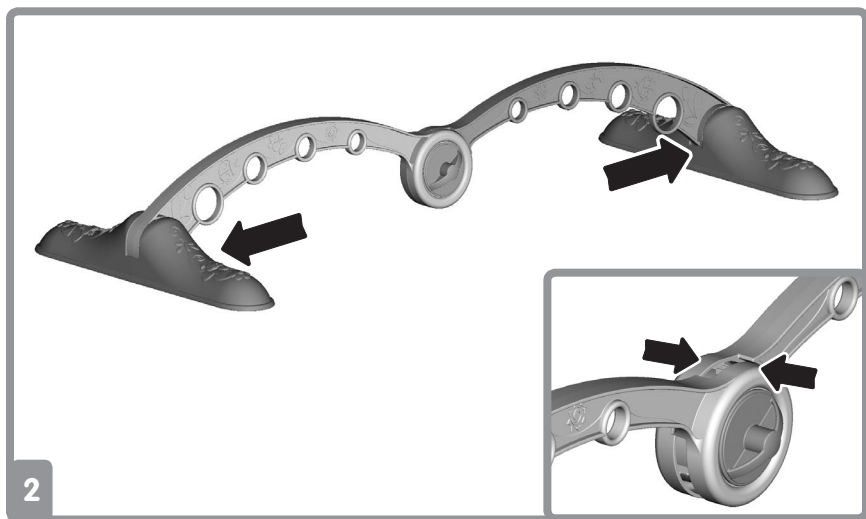
4

- Attach the toys to the arch as shown.

# Tummy Time Fun

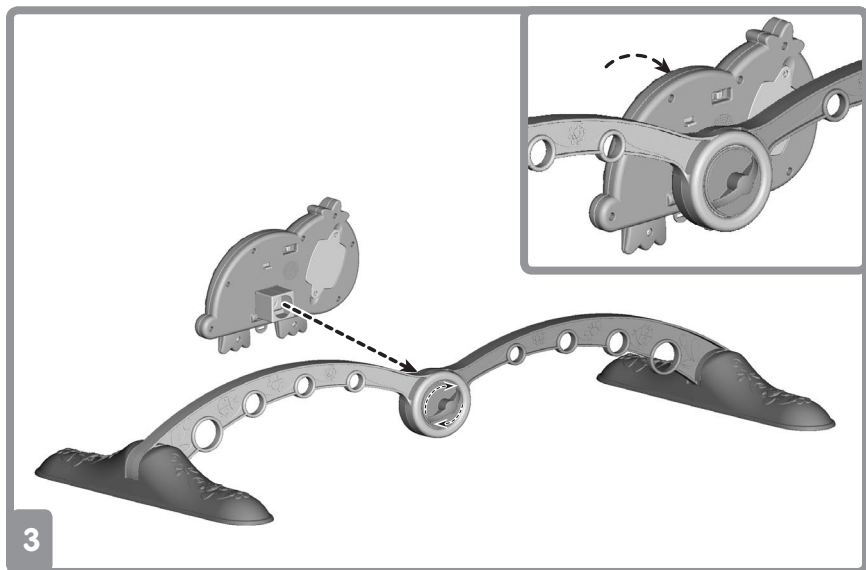


- Pull apart the hubs to unlock.



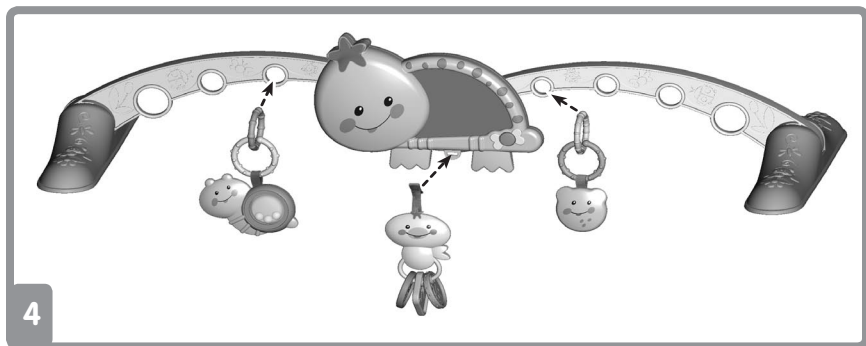
- Push the bases to lower the arcs to the ground.
- Push the hubs together to lock in place.

# Tummy Time Fun



- Fit the electronic toy tab onto the end of the retainer extending from the arcs.
- Turn the retainer several times to tightly secure the electronic toy.

**Hint:** Push the electronic toy up for tummy time fun!



- Attach the toys to the arcs as shown.




# Lots to Explore!



**Tummy Time**



**Overhead Gym**

- Bat or pull the center toy for music, lights and sounds!
- Slide the power switch on the electronic toy to on with low volume ; on with high volume  or off .

