

Fisher-Price®



Tummy Time

Overhead Gym



Sit & Play

Consumer Information



WARNING

To prevent entanglement injury, never place gym in a crib/cot or playpen. Never add strings, ties or other products to the gym.

- Please keep this instruction sheet for future reference, as it contains important information.
- Requires three "AA" batteries for operation (not included).
- Adult assembly is required.
- Tool required for battery installation: Phillips screwdriver (not included).



CONSUMER ASSISTANCE

1-800-432-5437 (US & Canada)
1300 135 312 (Australia)



service.fisher-price.com

Fisher-Price, Inc., 636 Girard Avenue, East Aurora, NY 14052.
Hearing-impaired consumers: 1-800-382-7470.

Outside the United States:

Canada: Mattel Canada Inc., 6155 Freemont Blvd.,
Mississauga, Ontario L5R 3W2; www.service.mattel.com.

Great Britain: Mattel UK Ltd, Vanwall Business Park,
Maidenhead SL6 4UB. Helpline: 01628 500303.
www.service.mattel.com/uk

Australia: Mattel Australia Pty. Ltd., 658 Church Street,
Locked Bag #870, Richmond, Victoria 3121 Australia.

New Zealand: 16-18 William Pickering Drive,
Aubany 1331, Auckland.

FCC Statement

United States Only

This equipment has been tested and found to comply with the limits for a Class B digital device, pursuant to Part 15 of the FCC Rules. These limits are designed to provide reasonable protection against harmful interference in a residential installation. This equipment generates, uses and can radiate radio frequency energy and, if not installed and used in accordance with the instructions, may cause harmful interference to radio communications. However, there is no guarantee that interference will not occur in a particular installation. If this equipment does cause harmful interference to radio or television reception, which can be determined by turning the equipment off and on, the user is encouraged to try to correct the interference by one or more of the following measures:

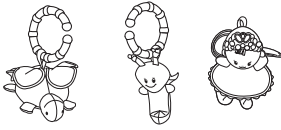
- Reorient or relocate the receiving antenna.
- Increase the separation between the equipment and receiver.
- Consult the dealer or an experienced radio/TV technician for help.

Note: Changes or modifications not expressly approved by the manufacturer responsible for compliance could void the user's authority to operate the equipment.

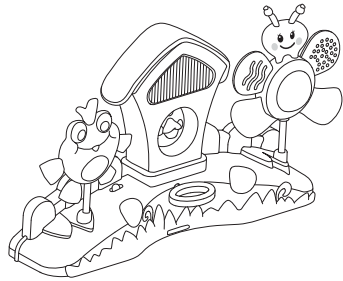
This device complies with Part 15 of the FCC Rules.

Operation is subject to the following two conditions: (1) this device may not cause harmful interference and (2) this device must accept any interference received, including interference that may cause undesired operation.

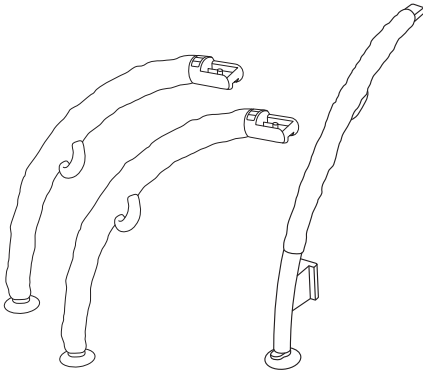
Parts



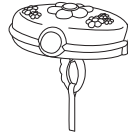
3 Soft Toys



Birdhouse



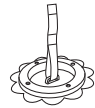
3 Arms



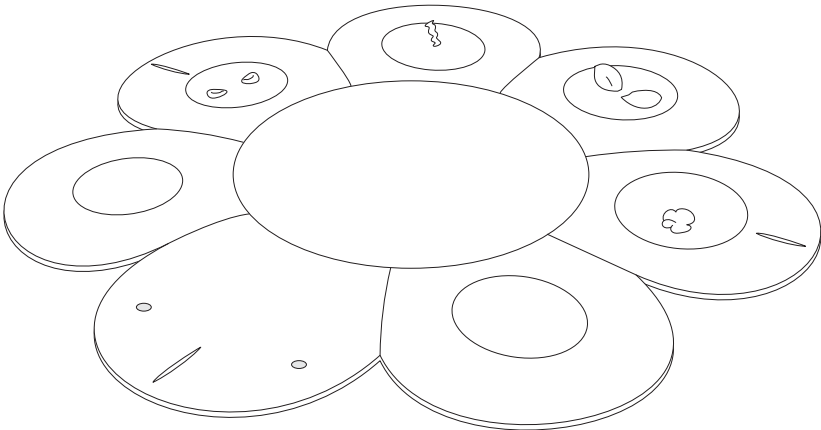
Hub



**Support
Pillow**



Mirror



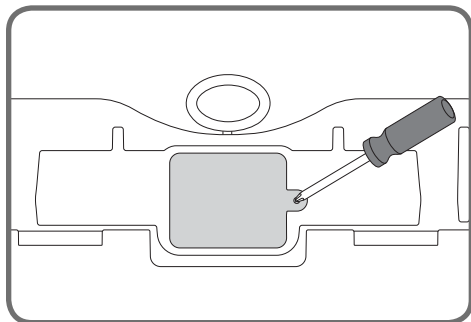
Quilt



3.5 mm x 22 mm Screw - 2

Note: Tighten and loosen screws with a Phillips screwdriver. Do not over-tighten the screws.

Battery Installation



- Locate the battery compartment door on the bottom of the birdhouse.
- Loosen the screw in the battery compartment door with a Phillips screwdriver. Remove the battery compartment door.
- Insert three "AA" (LR6) **alkaline** batteries.

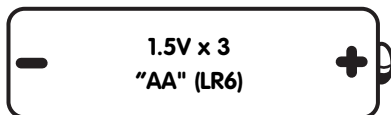
Hint: We recommend using **alkaline** batteries for longer battery life.

- Replace the battery compartment door and tighten the screw with a Phillips screwdriver. Do not over-tighten.
- If this product begins to operate erratically, you may need to reset the electronics. Slide the power switch off and then back on.
- When sounds or lights from this toy become faint or stop, it's time for an adult to change the batteries!



- Protect the environment by not disposing of this product with household waste (2002/96/EC). Check your local authority for recycling advice and facilities (Europe only).

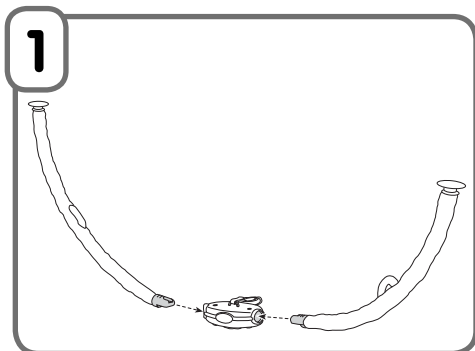
Battery Safety Information



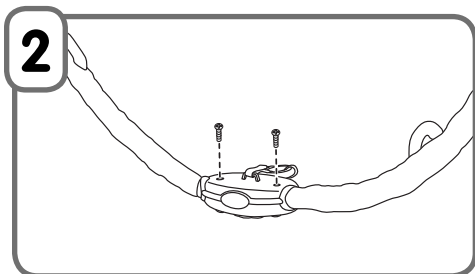
In exceptional circumstances, batteries may leak fluids that can cause a chemical burn injury or ruin your product. To avoid battery leakage:

- Do not mix old and new batteries or batteries of different types: alkaline, standard (carbon-zinc) or rechargeable (nickel-cadmium).
- Insert batteries as indicated inside the battery compartment.
- Remove batteries during long periods of non-use. Always remove exhausted batteries from the product. Dispose of batteries safely. Do not dispose of product in a fire. The batteries inside may explode or leak.
- Never short-circuit the battery terminals.
- Use only batteries of the same or equivalent type, as recommended.
- Do not charge non-rechargeable batteries.
- Remove rechargeable batteries from the product before charging.
- If removable, rechargeable batteries are used, they are only to be charged under adult supervision.

One-Time Arch Assembly

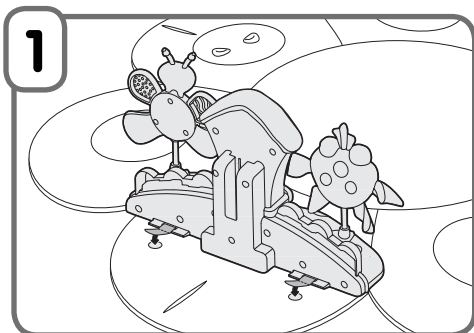


- Attach the arms to the hub, to form an arch.



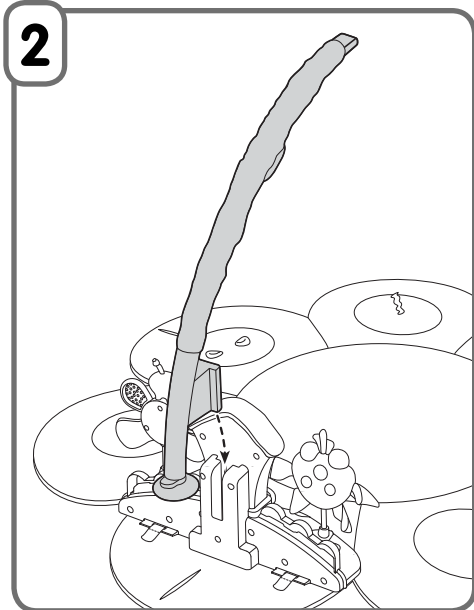
- Insert two screws into the hub and tighten, as shown.

Setup



- Place the birdhouse on the quilt petal with the fasteners.
- Push the tabs on the back of the birdhouse onto the fasteners to attach to the quilt.

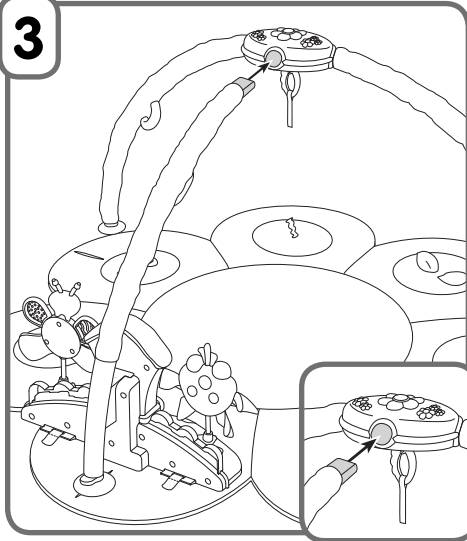
Hint: This toy is ready for Sit & Play fun! For Tummy Time and Overhead Gym play, continue with setup steps 2-5.



- Slide the arm tab into the groove in the back of the birdhouse.

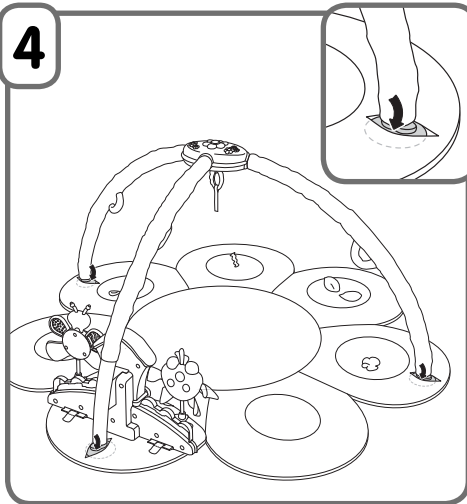
Setup

3



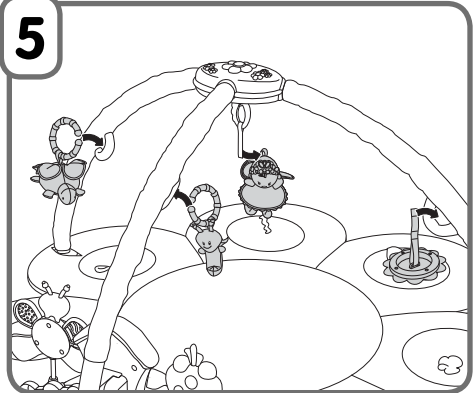
- Connect the arm into the hub on the arch.

4



- Insert each end of the arch into the slots in the quilt.

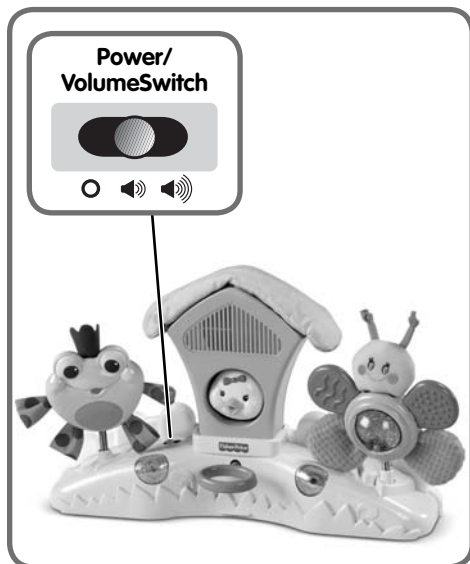
5






- Attach the soft toys and the mirror to the arch and arm.

Hint: Use the support pillow to prop baby up for tummy time play!

Dancing Lights, Sweet Music and Sounds!

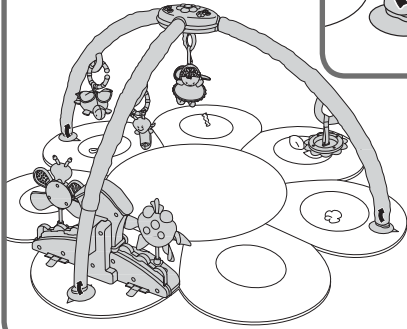


- Locate the power/volume switch on the birdhouse.
- Slide the switch to ON with low volume  or ON with high volume .
- Tap the loop on the front of the birdhouse for fun tunes and lights.
- When your child is finished playing with this toy, slide the power/volume switch OFF .

Hint: If your child is not actively playing with this toy, it turns off automatically (sleep mode).

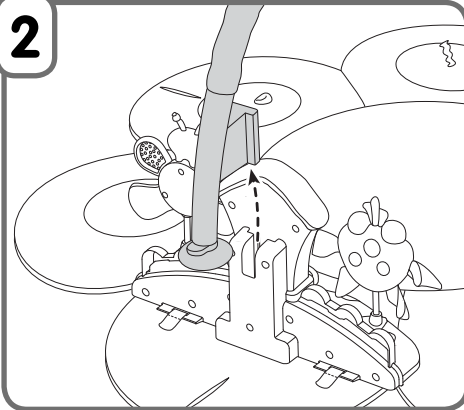
Storage

1



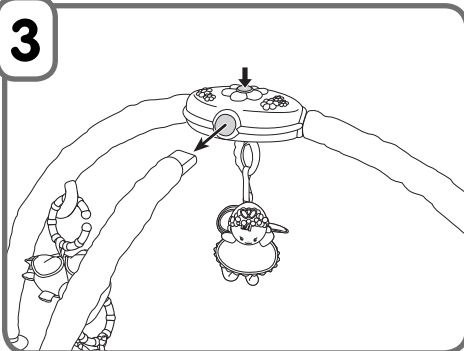
- Remove each end of the arch from the slots in the quilt.

2



- Lift and remove the arm from the birdhouse assembly.

3



- Push the button on top of the hub to remove the arm from the arch.

Care

Soft Toys

- Soft toys are surface washable.

Quilt and Support Pillow

- Remove the birdhouse, mirror, links, arch and arm.
- Wash the quilt and support pillow in cold water on a gentle cycle. Do not use bleach. Line dry the quilt and support pillow.

Birdhouse, Mirror, Links, Arch and Arm

- Wipe the surface with a clean cloth dampened with a mild soap and water solution. Do not use bleach.
- Do not immerse birdhouse.

ICES-003

This Class B digital apparatus complies with Canadian ICES-003. Operation is subject to the following two conditions: (1) this device may not cause harmful interference and (2) this device must accept any interference received, including interference that may cause undesired operation.

NMB-003

Cet appareil numérique de la classe B est conforme à la norme NMB-003 du Canada. L'utilisation de ce dispositif est autorisée seulement aux conditions suivantes: (1) il ne doit pas produire de brouillage et (2) l'utilisateur du dispositif doit être prêt à accepter tout brouillage radioélectrique reçu, même si ce brouillage est susceptible de compromettre le fonctionnement du dispositif.