

Fisher-Price®



Please keep this instruction sheet for future reference,
as it contains important information.

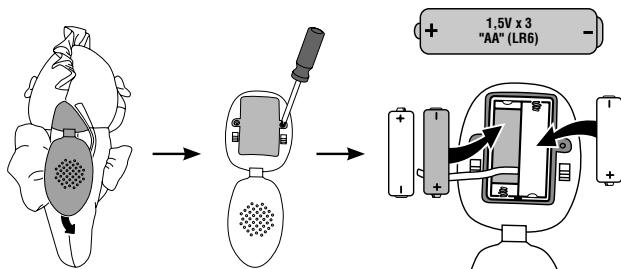
Adult assembly is required for battery replacement.
Requires three "AA" batteries (included) for operation.

Tool required for battery replacement:
Phillips screwdriver (not included).

www.fisher-price.com

Battery Replacement

Note: A plastic tab was attached to the toy for in-store demonstration purposes. While the tab may have already been removed, check the back of the toy to be sure. If the plastic tab is still attached, open the fasteners on the back of the toy and pull to remove the tab. Close the fasteners and throw the plastic tab away.



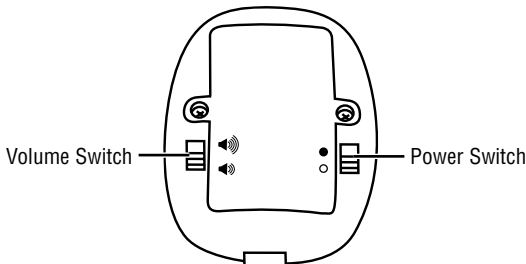
For best performance, we recommend that you replace the batteries that came with this toy with three, new "AA" (LR6) alkaline batteries.

- Open the fasteners on the back of the toy.
- Pull the sound box out of the toy to access the battery compartment.
- Loosen the screws in the battery compartment door. Remove the battery compartment door and the exhausted batteries.
- Pull tether strap to remove batteries. Discard the batteries.
- Replace tether strap in bottom of battery compartment.
- Insert three "AA" (LR6) **alkaline** batteries. Make sure the bottom battery is inserted **on top of** the tether strap.
- Replace the battery compartment door and tighten the screw.
- Fit the sound box back into the toy and close the fasteners.
- If the product begins to operate erratically you may need to reset the electronics. Slide the power switch off and then back on.
- When sounds or lights become faint or stop, it's time for an adult to change the batteries!



- Protect the environment by not disposing of this product with household waste (2002/96/EC). Check your local authority for recycling advice and facilities.

Soothe Baby with Lullabies and Ocean Sounds



-
- Open the fasteners on the back of the toy to access the sound box.
 - Pull the sound box out to access the switches.
 - Slide the power switch ON ●.
 - Adjust the volume switch to low volume 🔊 or high volume 🔊.
 - Fit the sound box back inside the toy and close the fasteners.
 - Squeeze the belly on the sea horse for lights and music.

Hint: If you cannot see the lights, open the fasteners and adjust the sound box to align the light with the sea horse tummy.

- When you are finished playing with the toy, open the fasteners and slide the power switch OFF ○.

Battery Safety Information

In exceptional circumstances, batteries may leak fluids that can cause a chemical burn injury or ruin your product. To avoid battery leakage:

- Do not mix old and new batteries or batteries of different types: alkaline, standard (carbon-zinc) or rechargeable (nickel-cadmium).
- Insert batteries as indicated inside the battery compartment.
- Remove batteries during long periods of non-use. Always remove exhausted batteries from the product. Dispose of batteries safely. Do not dispose of this product in a fire. The batteries inside may explode or leak.
- Never short-circuit the battery terminals.
- Use only batteries of the same or equivalent type, as recommended.
- Do not charge non-rechargeable batteries.
- Remove rechargeable batteries from the product before charging.
- If removable, rechargeable batteries are used, they are only to be charged under adult supervision.

Consumer Information



CONSUMER ASSISTANCE

1-800-432-5437 (US & Canada)
1300 135 312 (Australia)

service.fisher-price.com

Fisher-Price, Inc., 636 Girard Avenue, East Aurora, NY 14052.
Hearing-impaired consumers: 1-800-382-7470.

Outside the United States:

Canada: Mattel Canada Inc., 6155 Freemont Blvd.,
Mississauga, Ontario L5R 3W2; www.service.mattel.com.

Great Britain: Mattel UK Ltd, Vanwall Business Park,
Maidenhead SL6 4UB. Helpline: 01628 500303.
www.service.mattel.com/uk

Mattel Europa, B.V., Godel 1, 1186 MJ Amstelveen, Nederland.

Australia: Mattel Australia Pty. Ltd., 658 Church Street,
Locked Bag #870, Richmond, Victoria 3121 Australia.

New Zealand: 16-18 William Pickering Drive,
Albany 1331, Auckland.

FCC Statement (United States Only)

This equipment has been tested and found to comply with the limits for a Class B digital device, pursuant to Part 15 of the FCC Rules. These limits are designed to provide reasonable protection against harmful interference in a residential installation. This equipment generates, uses and can radiate radio frequency energy and, if not installed and used in accordance with the instructions, may cause harmful interference to radio communications. However, there is no guarantee that interference will not occur in a particular installation. If this equipment does cause harmful interference to radio or television reception, which can be determined by turning the equipment off and on, the user is encouraged to try to correct the interference by one or more of the following measures:

- Reorient or relocate the receiving antenna.
- Increase the separation between the equipment and receiver.
- Consult the dealer or an experienced radio/TV technician for help.

Note: Changes or modifications not expressly approved by the manufacturer responsible for compliance could void the user's authority to operate the equipment.

This device complies with Part 15 of the FCC Rules. Operation is subject to the following two conditions: (1) this device may not cause harmful interference and (2) this device must accept any interference received, including interference that may cause undesired operation.

Care

Wipe this toy with a clean cloth dampened with a mild soap and water solution. Do not immerse.

ICES-003

This Class B digital apparatus complies with Canadian ICES-003.

Operation is subject to the following two conditions: (1) this device may not cause harmful interference and (2) this device must accept any interference received, including interference that may cause undesired operation.

NMB-003

Cet appareil numérique de la classe B est conforme à la norme NMB-003 du Canada. L'utilisation de ce dispositif est autorisée seulement aux conditions suivantes:

- (1) il ne doit pas produire de brouillage et
- (2) l'utilisateur du dispositif doit être prêt à accepter tout brouillage radioélectrique reçu, même si ce brouillage est susceptible de compromettre le fonctionnement du dispositif.

Fisher-Price, Inc., a subsidiary of Mattel, Inc., East Aurora, NY 14052 U.S.A.
©2011 Mattel, Inc. All Rights Reserved. © and ™ designate U.S. trademarks of Mattel, Inc.