



Please keep this instruction sheet for future reference,
as it contains important information.

Requires three "D" (LR20) **alkaline** batteries
(not included) for operation.

Adult assembly is required.

Tool required for assembly:
Phillips screwdriver (not included).

Consumer Information



WARNING

Prevent Entanglement Injury

- Keep out of baby's reach.
 - Remove mobile portion of product from crib or playpen when baby begins to push up on hands and knees.
 - This product may not attach to all crib designs. Do not add additional strings or straps to attach to crib or playpen.
-
- The mobile portion of this product may be used from birth until 5 months.
 - The base portion of product may be used from birth until 36 months.
 - A crib mobile is intended for visual stimulation and is not to be grasped by a child.
 - Always attach with all provided fasteners tightly to a crib or playpen according to the instructions. Check frequently.
 - Wipe this toy with a clean cloth dampened with a mild soap and water solution. Do not immerse this toy.
 - This toy has no consumer serviceable parts. Do not take this toy apart.

ICES-003

This Class B digital apparatus complies with Canadian ICES-003.

Operation is subject to the following two conditions: (1) this device may not cause harmful interference and (2) this device must accept any interference received, including interference that may cause undesired operation.

NMB-003

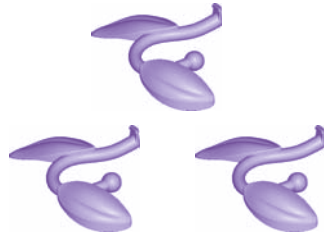
Cet appareil numérique de la classe Best conforme à la norme NMB-003 du Canada.

L'utilisation de ce dispositif est autorisée seulement aux conditions suivantes: (1) il ne doit pas produire de brouillage et (2) l'utilisateur du dispositif doit être prêt à accepter tout brouillage radioélectrique reçu, même si ce brouillage est susceptible de compromettre le fonctionnement du dispositif.

Parts



Mobile Hub



3 Small Leaf Spokes



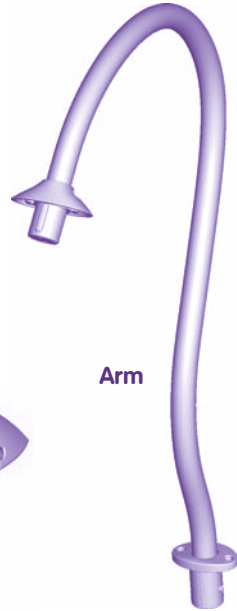
3 Large Leaf Spokes



3 Soft Toys



Crib Adaptor



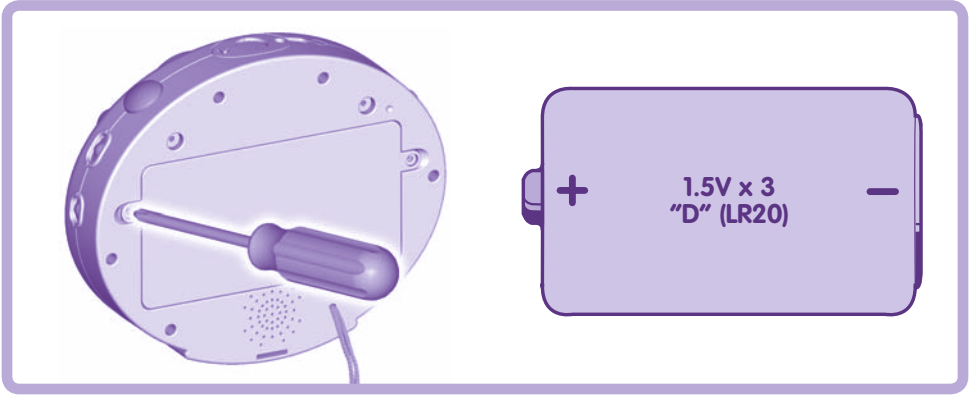
Arm



Base

Note: All of the screws used to assemble this toy are attached to the product. Follow these instructions carefully to fully secure the screws. Tighten and loosen all screws with a Phillips screwdriver. Do not over-tighten.

Battery Installation



- Locate the battery compartment on the back of the base.
- Loosen the screws in the battery compartment door and lift to remove it.
- Insert three "D" (LR20) **alkaline** batteries.

***Hint:** We recommend using **alkaline** batteries for longer battery life.*

- Replace the battery compartment door and tighten the screws.
- If this product begins to operate erratically you may need to reset the electronics. Slide the power/volume switch off and then back on.
- When lights or sounds become faint or stop, it's time for an adult to change the batteries.



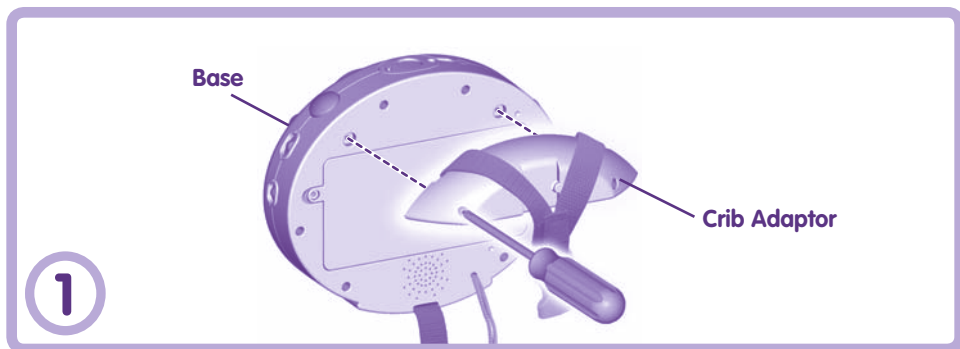
- Protect the environment by not disposing of this product with household waste (2002/96/EC). Check your local authority for recycling advice and facilities (Europe only).

Battery Safety Information

In exceptional circumstances, batteries may leak fluids that can cause a chemical burn injury or ruin your product. To avoid battery leakage:

- Do not mix old and new batteries or batteries of different types: alkaline, standard (carbon-zinc) or rechargeable (nickel-cadmium).
- Insert batteries as indicated inside the battery compartment.
- Remove batteries during long periods of non-use. Always remove exhausted batteries from the product. Dispose of batteries safely. Do not dispose of product in a fire. The batteries inside may explode or leak.
- Never short-circuit the battery terminals.
- Use only batteries of the same or equivalent type, as recommended.
- Do not charge non-rechargeable batteries.
- Remove rechargeable batteries from the product before charging.
- If removable, rechargeable batteries are used, they are only to be charged under adult supervision.

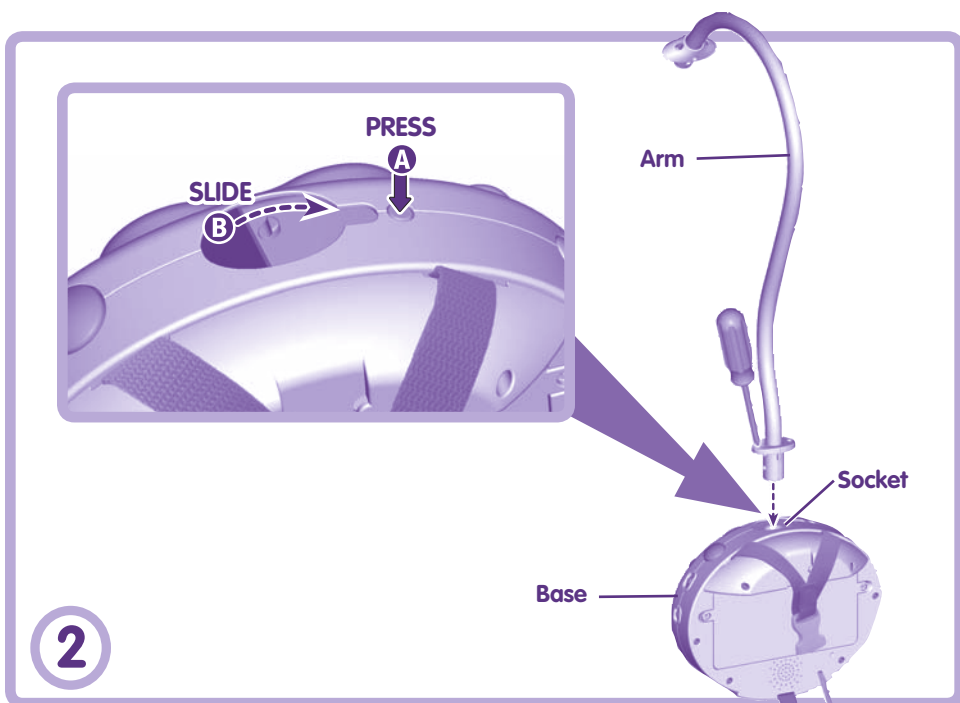
Assembly for Crib Use



- Fit the crib adaptor to the base.

IMPORTANT! Make sure the straps are over the **top** of the crib adaptor.

- Tighten **both screws** in the crib adaptor.

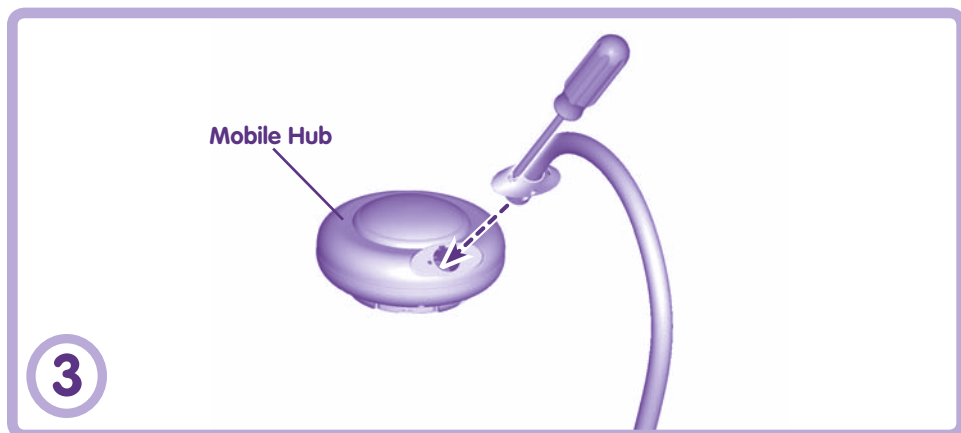


- First press the button next to the socket **A** and then slide the socket door open **B**.

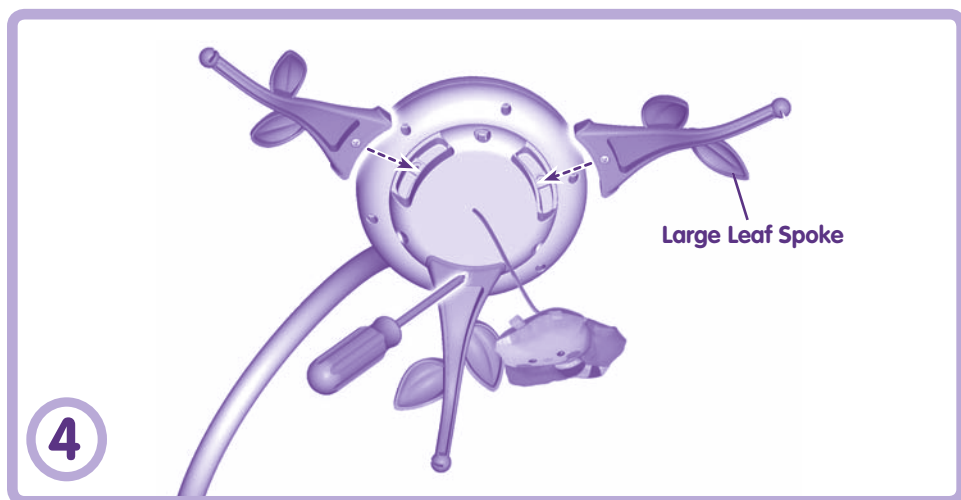
- Fit the arm into the socket in the base.

- Tighten **both screws** in the arm.

Assembly for Crib Use



- Fit the end of the arm to the socket on the mobile hub.
- Tighten **both screws** in the arm to secure the mobile hub.

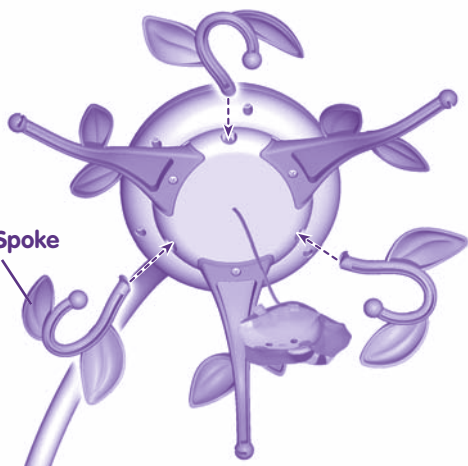


- Attach a large leaf spoke to the mobile hub, as shown.
- Tighten the screw with a Phillips screwdriver.
- Repeat this procedure to attach the remaining large leaf spokes to the mobile hub.

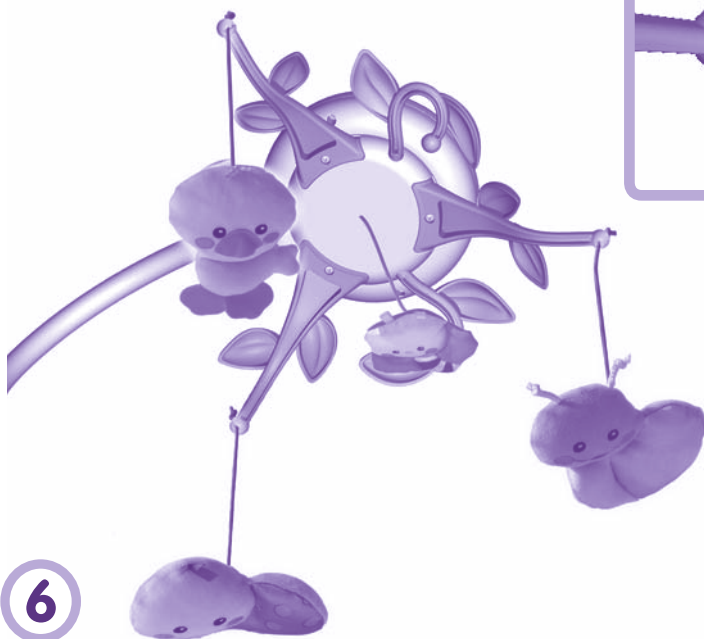
Assembly for Crib Use

Small Leaf Spoke

5



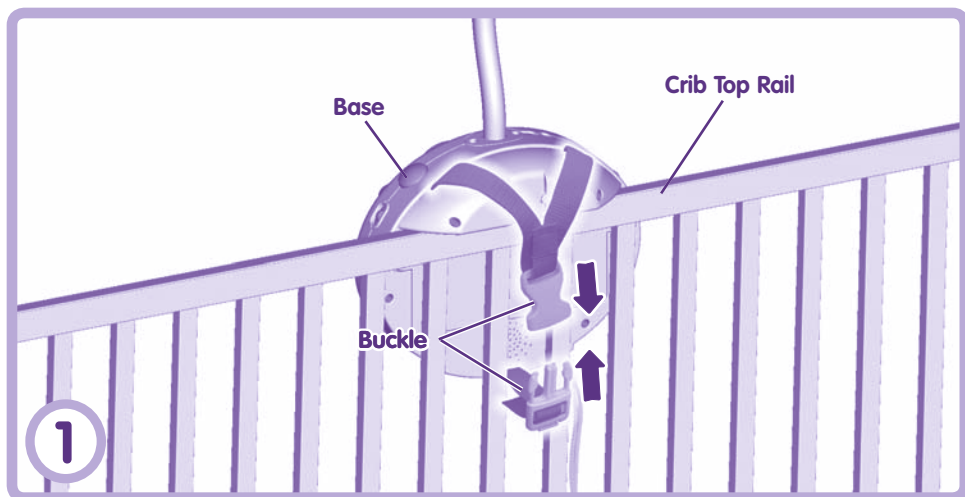
- Insert a small leaf spoke into a hole in the mobile hub.
- Push to **"snap"** the small leaf spoke in place.
- Repeat this procedure to attach the remaining small leaf spokes to the mobile hub.



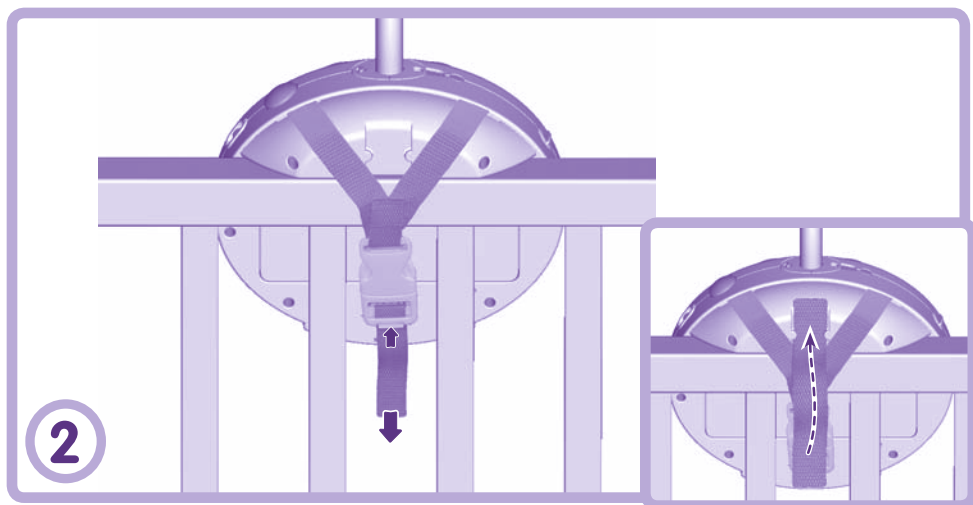
6

- Fit the string on a soft toy through the slot in the end of a large leaf spoke. Pull down gently on the soft toy to secure the string in the large leaf spoke.
- Repeat this procedure to attach the remaining soft toys to the other two large leaf spokes.

Crib Attachment



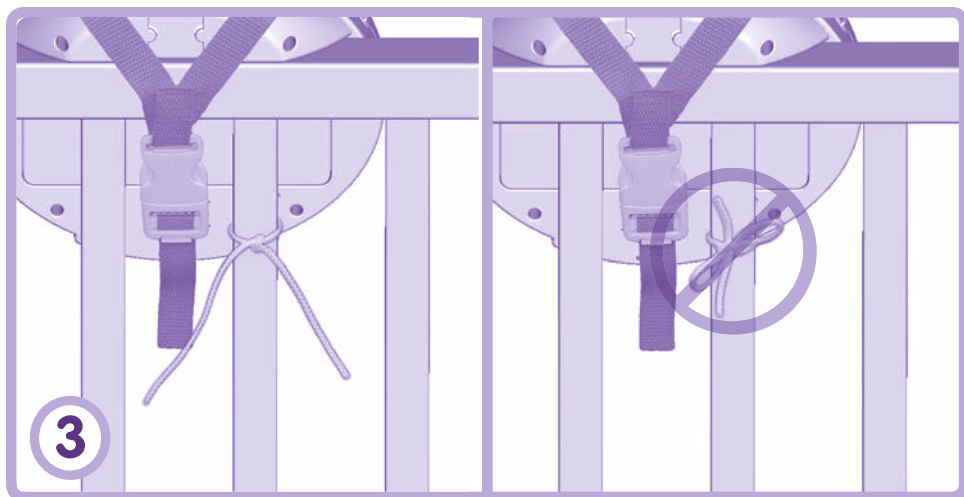
- Position the base so that the decorated side faces inside the crib.
- Fit the base onto the crib top rail.
- Make sure the top strap is hanging over the crib top rail. Pull the bottom strap through the crib rails.
- Buckle the straps. Make sure you hear a **"click"**.



- Make sure the straps are tightened securely around the crib rail.
- While pushing the tab at the bottom of the buckle, pull the free end of the strap to tighten on the rail. To loosen the strap for removal, simply pull the buckle down.

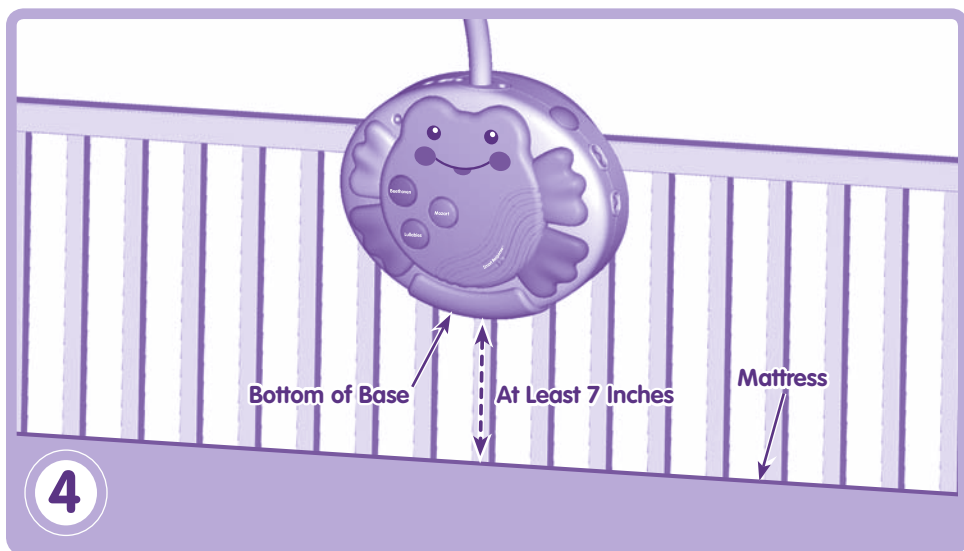
Hint: You can secure the free end of the strap to the base.

Crib Attachment



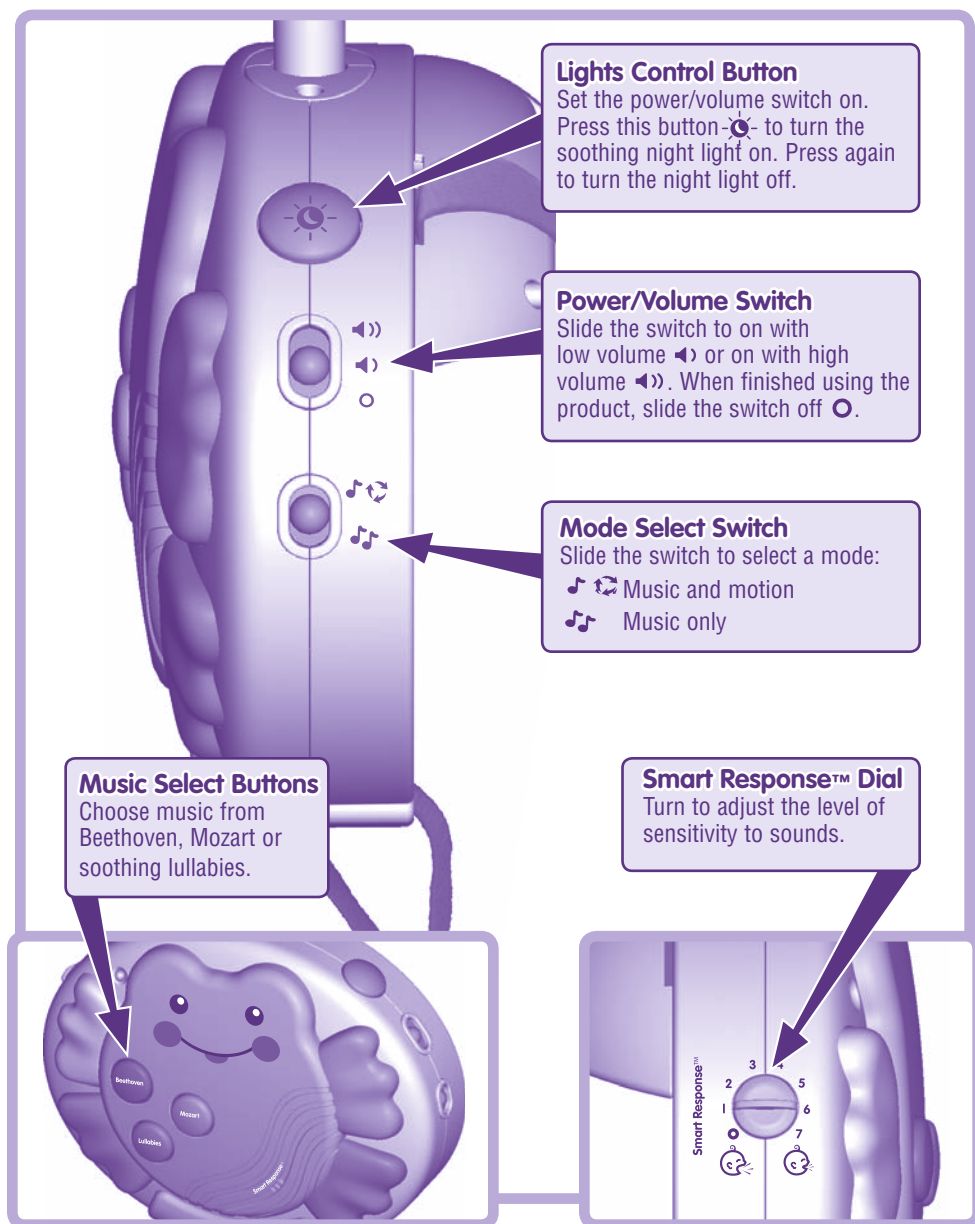
- Tie the base strings to a crib spindle.

Note: It is better to tie the strings in a knot than a bow, since a bow may be easily untied.



- If the distance between the base and the mattress is less than 7 inches (18 cm), lower the crib mattress.

Classical Music, Soothing Lullabies and Dancing Lights



Smart Response™ System

- The Smart Response™ system activates lights and music when baby cries. Turn the dial to adjust the level of sensitivity on the response system.
- Turn the dial to **high sensitivity** for incoming sounds (listens for shallow sounds) or **low sensitivity** for incoming sounds (listens only for loud sounds).

***Hint:** We recommend that you start with the high sensitivity setting at first.*

Convert to a Night Light

Remove the mobile and use as a music box with a night light!



Consumer Information

FCC Statement (United States Only)

This equipment has been tested and found to comply with the limits for a Class B digital device, pursuant to Part 15 of the FCC Rules. These limits are designed to provide reasonable protection against harmful interference in a residential installation. This equipment generates, uses and can radiate radio frequency energy and, if not installed and used in accordance with the instructions, may cause harmful interference to radio communications. However, there is no guarantee that interference will not occur in a particular installation. If this equipment does cause harmful interference to radio or television reception, which can be determined by turning the equipment off and on, the user is encouraged to try to correct the interference by one or more of the following measures:

- Reorient or relocate the receiving antenna.
- Increase the separation between the equipment and receiver.
- Consult the dealer or an experienced radio/TV technician for help.

Note: Changes or modifications not expressly approved by the manufacturer responsible for compliance could void the user's authority to operate the equipment.

This device complies with Part 15 of the FCC Rules.

Operation is subject to the following two conditions: (1) This device may not cause harmful interference and (2) this device must accept any interference received, including interference that may cause undesired operation.



CONSUMER ASSISTANCE

Call toll free: 1-800-432-5437 (US & Canada only)
M-F 9AM to 7PM / SAT 11AM to 5PM (EST)

 **service.fisher-price.com**

Write to us at: Fisher-Price® Consumer Relations,
636 Girard Avenue, East Aurora, New York 14052.

Hearing-impaired consumers using TTY/TDD equipment,
please call 1-800-382-7470.

For countries outside the United States:

Canada: Mattel Canada Inc., 6155 Freemont Blvd.,
Mississauga, Ontario L5R 3W2; www.service.mattel.com.

Great Britain: Mattel UK Ltd, Vanwall Business Park,
Maidenhead SL6 4UB, Helpline: 01628 500303,
www.service.mattel.com/uk

Australia: Mattel Australia Pty. Ltd., 658 Church Street,
Locked Bag #870, Richmond, Victoria 3121 Australia.
Consumer Advisory Service 1300 135 312.

New Zealand: 16-18 William Pickering Drive,
Albany 1331, Auckland.

Asia: Mattel East Asia Ltd, Room 1106, South Tower,
World Finance Centre, Harbour City, Tsimshatsui, HK, China.