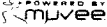




digital video camera

VIDSTER™ Editing Software Instructions

Contents:

1-Vidster Editing CD-ROM 
1-USB Cable
Instructions

 POWERED BY
muvee

- **For use with the Vidster™ Digital Video Camera.**
- **Requires Windows® compatible personal computer.**

© 2005 Mattel, Inc. All Rights Reserved. Tous droits réservés.

Mattel, Inc., 333 Continental Blvd., El Segundo, CA 90245 U.S.A. Consumer Affairs 1 (800) 524-8697.

Mattel Canada Inc., Mississauga, Ontario L5R 3W2. You may call us free at 1-800-665-6288.

Microsoft, DirectX and Windows are either registered trademarks or trademarks of Microsoft Corporation in the U.S. and/or other countries. Pentium is a registered trademark of Intel Corporation.

TABLE OF CONTENTS

Welcome to Vidster™ Editing	1
Software Requirements	1
Installing the Software	2
Uninstalling the Software	3
Quickstart	4
Vidster™ Photo Editor	6
Recognized Formats	6
Getting Your Photos	7
Changing Your View	7
Special Effects	8
Finishing Your Work	10
Making Movies with Vidster™ autoProducer	11
Recognized Formats	12
Step 1: Getting the Video	12
Step 2: Making the Soundtrack	15
Step 3: Adding Style	15
Step 4: Putting It All Together	17
Finishing Up	18
Questions or Problems?	18

WELCOME TO VIDSTER™ EDITING!

With the power of Mattel's Vidster™ Photo Editor and autoProducer (powered by Muvee), you can:

- Enhance, transform or customize your photos.
- Create vivid, unique slideshows using photos or stills from your videos.
- Combine music and videos with one of ten distinct styles to make a mini-movie.

It just takes the touch of a few buttons and you are on your way to being a photo pro or rising director. Are you ready for it?

SOFTWARE REQUIREMENTS

The following system is required to run the Vidster™ Editing software.

- Personal computer running Microsoft® Windows® ME, Windows® 2000, or Windows® XP.
- 550 MHZ Pentium® III, AMD K-6, or equivalent processor with MMX support.
- 128MB of available RAM or more
- 16MB video RAM or more
- Microsoft® DirectX® 9.0 installed
- The latest Microsoft® Media Player Installed
- 7200 RPM or faster hard disk
- CD-ROM drive.

- Built-in USB port.
- Color monitor with minimum resolution of 800x600 pixels; High Color (16-bit) or True Color (24-bit) recommended.

* If you do not have Microsoft® DirectX® 9.0 installed, you can download it from www.microsoft.com/directx. Follow the website installation instructions and then restart your computer.

INSTALLING THE SOFTWARE

This program was designed and manufactured to work within existing industry standards. Computers with Windows® 2000, Windows® XP or Windows® XP Pro may need administrator privileges to install this software. See your computer user's guide for details.

1. Insert the Vidster™ Editing software CD into your CD-ROM drive.
2. If the AutoPlay feature is enabled for your CD-ROM, left-click on the Install button and skip the next two steps.
3. If you don't have AutoPlay enabled, left-click on the Start menu. Select Run from the Windows® Taskbar.
4. Type d:\vidster-installer.exe (d: refers to your CD-ROM drive. If your CD-ROM drive letter is not d: please use the appropriate drive letter instead.)
5. Follow the instructions that appear on your screen.

If during the installation you are prompted to install DirectX® and your computer restarts, you will need to restart the installation process by

following these steps: Right-click your CD-ROM drive, choose Explore, and double-click the program mvVidster-Setup.exe. After the installation is complete, you will find two icons for the Vidster™ Editing software on your desktop, one for photos and the other for movies. You will also find both icons in the Vidster™ menu item within Programs under the Start Menu in the Windows® Taskbar.



UNINSTALLING THE SOFTWARE

If you need to remove the software follow these steps:

1. Insert the Vidster™ Editing software CD into your CD-ROM drive.
2. If Autoplay is not enabled double-click your CD-ROM drive
3. At the Mattel Vidster InstallShield Wizard screen select remove.
4. Left-click Next.
5. A window will pop up asking if you'd like to remove the application, left-click Yes and at the next screen left-click Finish

6. The muvee autoProducer 3.5 magicMoments Setup screen will pop-up next. Select Remove and left-click Next
7. A window will pop up asking if you'd like to remove the application, left-click Yes and at the next screen left-click Finish
8. The software and its components are now removed from your computer.

QUICKSTART

Want to get to it immediately? Here are some quick steps you can take to dive right in:

Turn off your Vidster™ and switch the mode switch to playback, connect your camera to your computer with the included USB cable, turn on your Vidster™.

Using Vidster™ Photo Editor

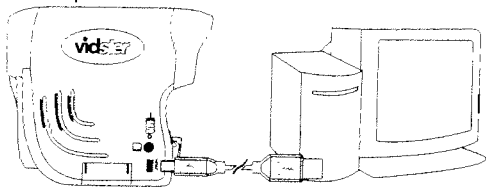
- Get Your Photos: Import them directly off your camera or select them from the Directory Window.
- Put them in the Editor: Click on a photo on the 'filmstrip'
- Add in some Effects: Crop, Zoom In or Zoom Out, your photo, make it Full Screen, or put in some Special Effects (play with the color, warp it, or rotate it). Hit Undo if you don't like what you did.
- Save it: Print, Email or Save it.

Using autoProducer 3.5

- Get your Movies: Click on the Video/Pictures button to choose your movies from a directory.
- Choose your music: Click on the Music button to add in some songs from the directory of your choice.
- Find a style: Choose from ten styles in the Style menu. This lets the software's Artistic Intelligence know what kind of movie you want to make. Add in your captions afterward if you want.
- Make your Movie: Select the Make Movie button to bring it all together.
- Make Magic Moments: Highlight your movie and then select 'magic moments' so that you can choose which scenes you like the best and which ones you want to see go away.
- Save it: Save it or Email it, as you wish.

Downloading From Your Vidster™

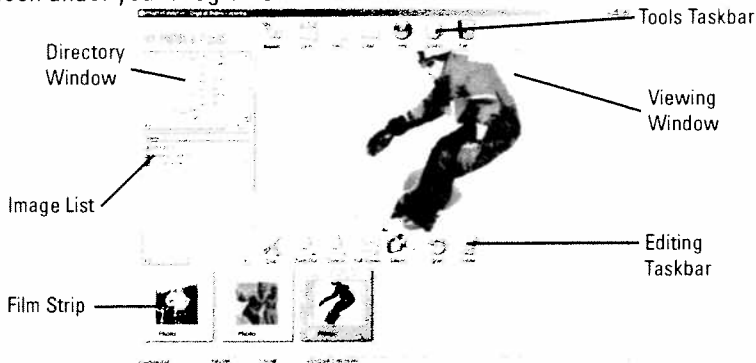
1. Turn off your Vidster™ attach the included mini-USB cable to a compatible computer.



2. Set the slide switch to Playback mode and turn on your Vidster™. The Vidster™ will show up as a 'removable drive' on your computer once it's plugged in. You can then move the images off and/or delete them, just as you would from any other storage drive.
3. Before removing or turning off your Vidster™ camera, follow your computer's standard procedure for stopping and removing USB mass storage device. Then turn-off your Vidster™ and disconnect it from your computer.

VIDSTER™ PHOTO EDITOR

To start the Vidster™ Photo Editor, click on the Vidster™ Photo icon on your desktop or go into the START menu and find the Vidster™ Photo icon under your Programs menu.



Recognized Formats

The Vidster™ Photo Editor is set up to work best with the Mattel Vidster™ Digital Video Camera. It provides 320x240 QVGA pictures.

Getting Your Photos

There are a couple of ways you can edit photos with your Vidster™ Photo Editor. The first comes direct from the camera.

Make sure your Vidster™ digital camera is on and plugged into your computer (see the Vidster™ Digital Camera instructions on how to do this.) Then click the Import button on the Tools taskbar. A menu will pop up asking where to put your pictures (you can type in the name of a drive and a folder or you can browse your lists of existing drives and folders) and check the box, if you want to delete the photo(s) off the camera after you download them. Make your choices, click the Import button and the software will then grab your pictures. All of those photos will preview in a 'Film strip' running along the bottom of the screen.

As another option, download photos from your computer. Check out the Directory Window and click on the directory you keep your photos in. A list of all the photos in that directory will then appear in the window just underneath. All of those photos will also preview in a 'Film strip' running along the bottom of the screen.

Changing Your View

Click on a picture in the Filmstrip to edit it. You can cut down the size of the picture by pressing the Crop button on the Editing taskbar. After you press the button, a box will appear on your picture that can be adjusted by left-clicking on your mouse and dragging it to make it bigger or smaller, moving the four sides up or down, right or left individually. Once the box is as big as you want, press the Crop button again and everything that is in the box is saved. Everything outside the box is cut. Click the Undo button to return to the original photo.

You can change how you look at your picture through three buttons on the Editing taskbar. You can Zoom In or Zoom Out on the picture or press the Full Screen button for a complete shot. You can also double click on the Viewing Window to change your view to full screen. Once in Full Screen you can use the mouse scroll wheel to Zoom In or Out. Double click a second time to return. You can highlight just a section of your picture for cropping or for effects. Left-click on the picture and hold down the button as you move the mouse. Whatever you've got inside your box is what will change.

Special Effects

The Effects button on the Editing taskbar gives you a whole range of things you can do to your picture.

The Effects are:

- **Resize** – reduce or enlarge the picture. This feature only works on the full photo.
- **Enhance Colors** – allows you to change a number of color options for your photo, including contrast, brightness, hue, saturation, luminosity, equalization, the FFT, and gamma correction. It will also sharpen the image. Play around with them to see what each setting does!
- **Rotate** – rotates the image 90 degrees clockwise each time you click it. This feature only works on the full photo.
- **Black & White** – removes color from your picture.
- **Sharpen** – slightly sharpens the image
- **Blur** – slightly blurs the image
- **Mirror** – turns the photo into a mirror image of itself. This feature only works on the full photo.
- **Flip** – flips the image upside down. This feature only works on the full photo.
- **Lens** – distorts the picture, as if seeing the photo through a distorted lens.
- **Negative** – reverses all of the image's colors.
- **Wave** – distorts the picture in a wave-like fashion.
- **Spotlight** – darkens most of the picture except for one corner, which it spotlights.
- **Wallpaper** – sets your computer's desktop to the picture in the

Viewing Window. This feature only works on the full photo. You may need to follow some on screen pop-up menus, and in some cases may need to restart your computer for the new settings to take effect.

- **Sepia** – changes the color of the image to sepia tones (a light brown).

Some effect may take a few seconds to complete. If you don't like the special effect you just chose, reverse it by clicking on Undo button on the Editing taskbar.

Finishing Your Work

After you've finished tweaking your photo, use the Tools taskbar to either Save, Print, or Email your photo. Just click on one of these three options and follow their instructions. To print or e-mail a photo you must select it from the Film Strip.

If you want to get rid of the picture permanently, click the Delete button. The software will confirm that you want to get rid of the photo before doing so.

Once that's all done, click on Exit to leave the program.

MAKING MOVIES WITH VIDSTER™ AUTOPRODUCER

Ready to make a movie? To start the Vidster™ autoProducer (powered by Muvee), click on the Vidster™ autoProducer icon on your desktop or go into the START menu and find the Vidster™ autoProducer icon under your Programs menu.



Using the tools below, you will work alongside the Vidster™ Editing software's Artistic Intelligence to make a professional looking movie. It's simple! It just takes four easy steps.

Recognized Formats

The Vidster™ autoProducer is set up to work best with the Mattel Vidster™ Digital Video Camera. It provides 320x240 MJPEG videos.

STEP 1: GETTING YOUR VIDEO

Click on the Video/Pictures button in the Editing taskbar. Then, a menu asks you if you want to Add Video or Add Picture. By clicking on one of these buttons, it opens up a sub-directory so you can find your saved Video/Picture. Click on the Add Video button, click on the pull down menu for the "Look in". To find the video stored in your Vidster: find the "Removable Disk" drive and double click on this item. Find the "VIDEO" folder, double click on this item and then double click on the "100ME-DIA" folder. Click on the video and the autoProducer loads your movie into the editor.

If you want to add a series of videos or photos at one time, select the first video or photo and hold down the "SHIFT" key on your keyboard, choose multiple files and double click.

If you click on a movie or picture that is already loaded, the autoProducer allows you to 'Move up' or 'Move down' your selection on the list. This increases or decreases the clip's importance when the Artistic Intelligence edits the piece. You can also Remove the highlighted clip if you wish.

"Magic Moments"

The Magic Moments function lets you decide which video clips you'd prefer the Artistic Intelligence to use. To access Magic Moments, highlight a movie in the Video/Pictures menu by clicking on it. The Magic Moments button then lights up. After clicking the Magic Moments button, it takes you to another screen. A large preview window starts playing the movie for you. Underneath it is a very important gray strip – this strip represents all of the scenes that the Artistic Intelligence found in your movie. Each scene is separated from another by a white line. Below that gray strip are the controls to edit your content. You've got a "Thumbs up", a "Thumbs down" and a neutral looking hand. You've also got some arrows, two big and two small.

Here's how it works. You see a part of the movie you really like. Click on the green "Thumbs Up" button and hold on to it as long as the scene lasts. You'll notice that the gray strip underneath that scene is turning green. This lets the Artistic Intelligence know that you really like this scene. Then, you find some stuff you don't like. Use the red "Thumbs Down button" and hold it down to highlight the 'bad' section of the film. The Artistic Intelligence will ignore it from now on.

What about the grey stuff? That's neutral – the Artistic Intelligence may or may not use it after it's gone through all of the Green scenes. You can

return all of your red or green strips to gray by going over them while pressing the neutral hand.

A little note: it's not usually good to highlight across scenes as this sometimes messes with certain styles.

So what are the arrows for? The small arrows allow you to rewind or advance one frame at a time. You see, each movie is made up of strung-together pictures called frames. There are usually about 15 frames per second in a film. The small arrows let you go through the movie bit by bit so you can highlight (or eliminate) those tiny pieces with the "Thumbs Up"/"Thumbs Down" button.

As for the big arrows, remember the white lines that mark off scenes? The big arrows will skip to the next white line (basically, the next scene) called a 'snap point'. This can be really helpful if you want to advance through the movie fast. If you need, you can Undo or Redo something you've highlighted earlier. Once you've finished figuring out what you like or don't like, click Okay.

Previewing Your Clip

To preview the clips you've selected, click on the Play button in the Viewing Window. As long as you haven't starting working on another step (like Music or Style), the Viewing Window plays your selected movies for you.

STEP 2: MAKING THE SOUNDTRACK

What's a movie without good music? Clicking on the Music button opens up a menu that's a lot like the Video/Picture menu. Select songs from your computer's directory by clicking on the Add Music button. Click on the pull down menu for the "Look in". Find the drive and/or folds you have saved your music files in. Double click on the music file of your choice and the autoProducer loads your photo into the editor.

Once it's been loaded in, move your selection up or down or remove it entirely if you wish. At the bottom is an important feature. A slider bar lets you choose the balance between your music and the sound already on the video; you decide how much stays in. Once you are done, click on Okay to exit. If you need to preview your music, click play in the Viewing Window. As long as you haven't starting working on another step (like Movies or Style), the Viewing Window plays your musical selection for you.

STEP 3: ADDING STYLE

Now that the Artistic Intelligence has had a chance to look at your chosen movies and music, it's time to give the whole thing a sense of style. By clicking on the Style button, this takes you to a menu where you select the specific way the Artistic Intelligence edits your movie. The styles included with the Vidster™ Movie Maker are:

- **Acid** – Bizarre color warps and trippy effects.
- **Breathe** – Slow style with medium-paced transitions to let you relax. Works best with slow, vocal music.
- **Classic Sepia** - A sepia-tinted style that harks back to the early days of film-making.
- **Detective** – Play sleuth and create a mystery-themed movie with this novelty style.
- **Millennium Party** – Pulsing colored orbs, fast wipes and party icons gives a great feeling of fun. Teams well with up-tempo pop music.
- **Over The Top Music Video** – fast cuts and transitions work well with pop/techno beats for a high-energy music video.
- **Pro: Medium** – Basic, medium-paced style using cuts and dissolves.
- **Simple Music Video** – Basic up-tempo style with fast cuts that respond well to fast music beats.
- **Slide Show Pro: Fast** – Fast-paced slideshow of stills from the original video with quick cuts and dissolves.
- **Smoky** – Smooth black-and-white style with slow lazy dissolves.

The Vidster™ autoProducer also needs to know if you want to keep the shots in order or if you want the Artistic Intelligence to make that call. Once you're done with this, select OK to move on to the next step.

Captions

After you've finished choosing your main style, you can Add Captions to the beginning and end of your movie. You can also choose fonts for these captions or you can let Artistic Intelligence to choose them for you.

To change the Opening titles or the Closing credits, click in the appropriate box and make your changes. To change the fonts, uncheck the checked box and choose the Font button for the appropriate box and make your choices. Select OK to move on to the next step.

STEP 4: PUTTING IT ALL TOGETHER

Here's where the whole thing comes together. Click on the Make Muvee button and the Artistic Intelligence takes over. It analyzes your songs, videos and pictures, mixes it with the requested style and then meshes it all together seamlessly to make your perfect movie.

You've only got one last question to answer before it happens; do you want the Artistic Intelligence to take over in Automatic Mode? Or, do you want to do a Manual Mode, making some of the decisions yourself. If you go Manual, you'll determine the length of the film and if you want the Artistic Intelligence to reuse video clips or music in your movie.

You can then preview the whole thing in the Viewing Window by pressing the Play button.

FINISHING UP

Feel free to go back and re-edit your movie. Add in some pictures! Check it out in different styles. What happens if you highlight some different scenes in Magic Moments? Once you have a movie that you really love, select Save Muvee.

Choose from the listed options for the end use of the saved Muvee file. Select OK. Click on the pull down menu for the "Save in". Find the drive and/or folds you would like to save your Muvee files in. Click on the folder, name your Muvee in the "File name" box and select Save.

QUESTIONS OR PROBLEMS?

That's all it takes to make a movie! If you're not finding what you're looking for in this manual, please check the program's comprehensive Help guide. The Help menu also provides troubleshooting for basic problems. The ability to check for Updates can also be found in both the Vidster™ Photo Editor and the Vidster™ autoProducer. Updates will give you access to any software updates from Mattel and its affiliates.

We're here to help!

Call 1-800-227-3378 toll-free any weekday from 8:00am to 9:00pm PST (11:00am to 12:00am EST.).

(California residents phone (714) 836-4981)

CONSUMER INFORMATION
Need Assistance? In the US and Canada, service.mattel.com or 1-800-524-8897, M-F 8AM - 6PM, ET.
*Website in English language only
SERVICE.MATTEL.COM