

Battery Replacement

Batteries included are for demonstration purposes only. Replace batteries when movement becomes slow.

For longer life use only alkaline batteries. Toy requires 2 replaceable AA/LR6 alkaline batteries. To replace batteries, use a Phillips head screwdriver (not included) to open battery door. Insert 2 AA/LR6 alkaline batteries as shown. Use either AA/LR6 alkaline batteries or equivalent. Replace battery cover and screw closed.

Battery Safety Information

In exceptional circumstances batteries may leak fluids that can cause a chemical burn injury or ruin your product. To avoid battery leakage:

- Non-rechargeable batteries are not to be recharged.
- Rechargeable batteries are to be removed from the product before being charged (if designed to be removable).
- Rechargeable batteries are only to be charged under adult supervision (if designed to be removable).
- Do not mix alkaline, standard (carbon-zinc), or rechargeable (nickel-cadmium) batteries.
- Do not mix old and new batteries.
- Only batteries of the same or equivalent type as recommended are to be used.
- Batteries are to be inserted with the correct polarity.
- Exhausted batteries are to be removed from the product.
- The supply terminals are not to be short-circuited.
- Dispose of batteries safely.
- Do not dispose of this product in a fire. The batteries inside may explode or leak.

The Nail Polish/Glitter in this product has been sealed with a tamper-evident seal. If this seal is broken, do not use this product and call Mattel Consumer Relations 1-800-524-TOYS for a replacement.

Nail Polish is washable, but may stain fabrics and other surfaces. Avoid contact with carpet, clothing, walls and furniture.



Protect the environment by not disposing of this product with household waste [2002/96/EC]. Check your local authority for recycling advice and facilities.

CONSUMER INFORMATION

Need Assistance? Visit service.mattel.com or call 1-800-524-8697 (US and Canada only), M-F 9AM - 7PM & SAT 11AM - 5PM, Eastern.

SERVICE.MATTEL.COM

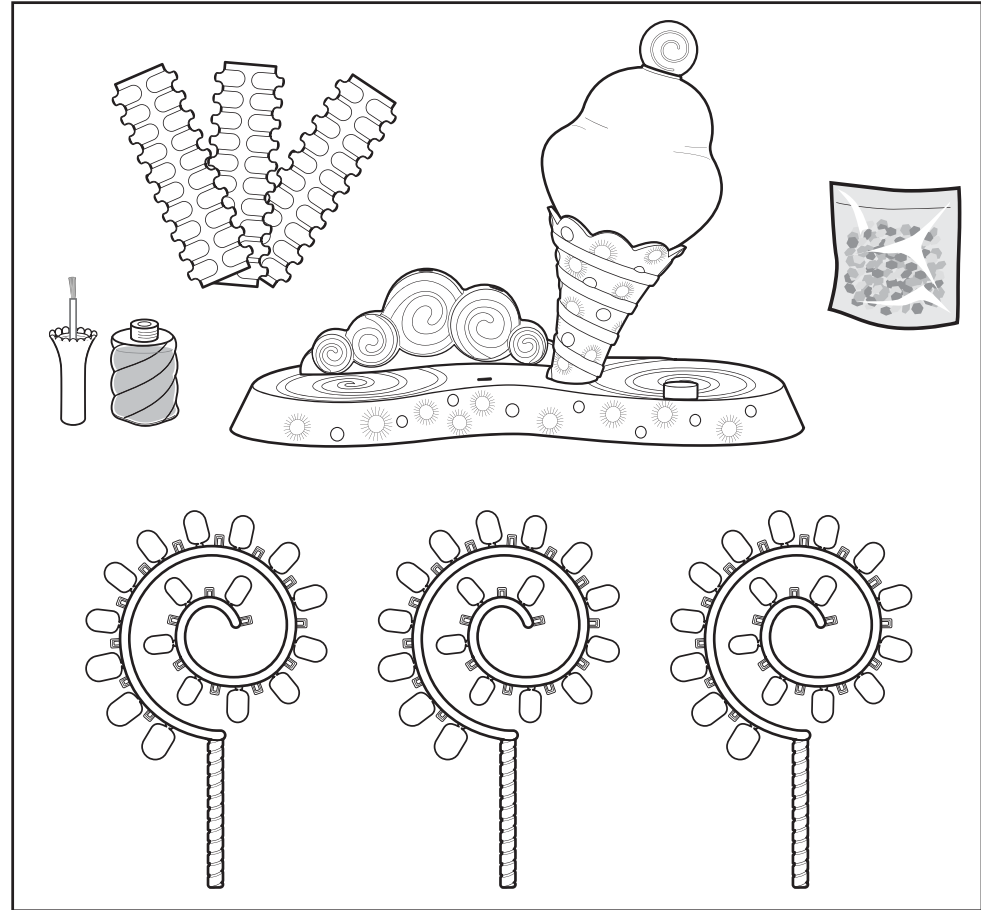
Mattel Canada Inc., Mississauga, Ontario L5R 3W2. You may call us free at/ Composez sans frais le 1-800-524-8697.
 Mattel U.K. Ltd., Vanwall Business Park, Maidenhead SL6 4UB, Helpline 01628 500303.
 Mattel Australia Pty., Ltd., Richmond, Victoria. 3121. Consumer Advisory Service - 1300 135 312.
 Mattel East Asia Ltd., Room 1106, South Tower, World Finance Centre, Harbour City, Tsimshatsui, HK, China.
 Diimport & Diedarkan Oleh: Mattel SEA Ptd Ltd. (993532-P) Lot 13.5, 13th Floor, Menara Lien Hoe, Persiaran Tropicana Golf Country Resort, 47410 P.J. Tel: 03-78803817, Fax: 03-78803867.
 Mattel, Inc., 333 Continental Blvd., El Segundo, CA 90245 U.S.A. Consumer Relations 1 (800) 524-8697.

Barbie
 Candy
 Glam™

Nail Glitterizer™
 INSTRUCTIONS

5+
 MATTEL
 N3652-0920

CONTENTS



WARNING:
 CHOKING HAZARD - Small parts.
 Not for children under 3 years.

Includes 2 AA batteries. Dispose of batteries safely.

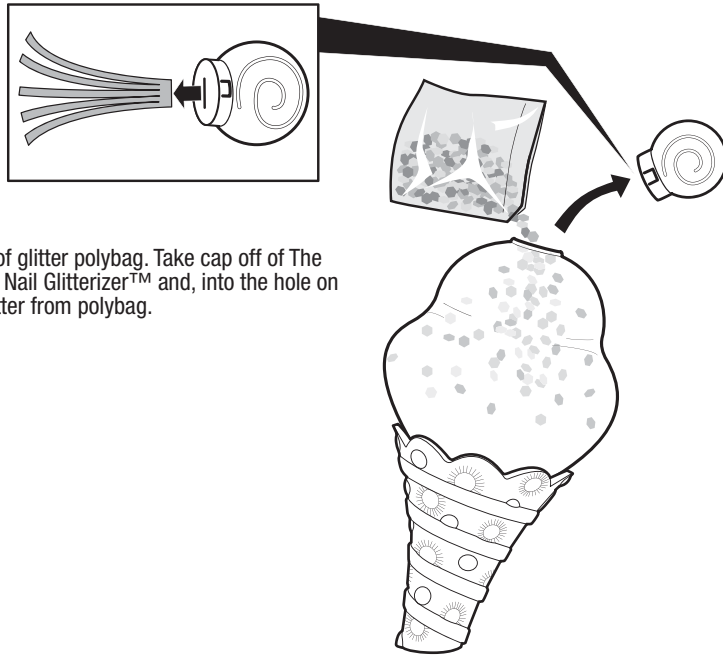
Please remove everything from the package and compare to the contents shown here. If any items are missing, please contact your local Mattel office. Keep these instructions for future reference as they contain important information.

Paint and glitterize your own nails, or easy-to-use stick-on nails!

Remove "TRY ME" foil from The Candy Glam™ Nail Glitterizer™ before playing.

1

Cut off corner of glitter polybag. Take cap off of The Candy Glam™ Nail Glitterizer™ and, into the hole on top, pour in glitter from polybag.



2

Put cap on.

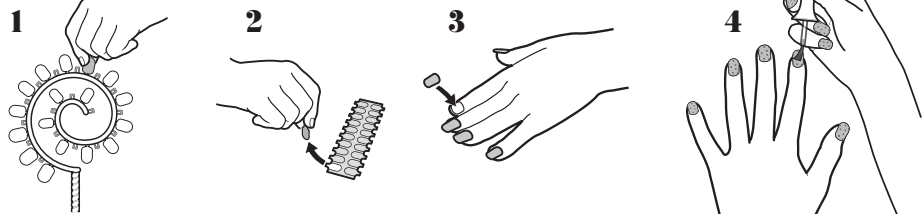
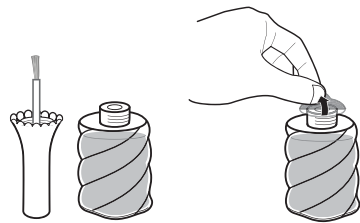
3

Apply nail polish in 1 of 2 ways:

1. Apply nail polish onto one of your nails, or

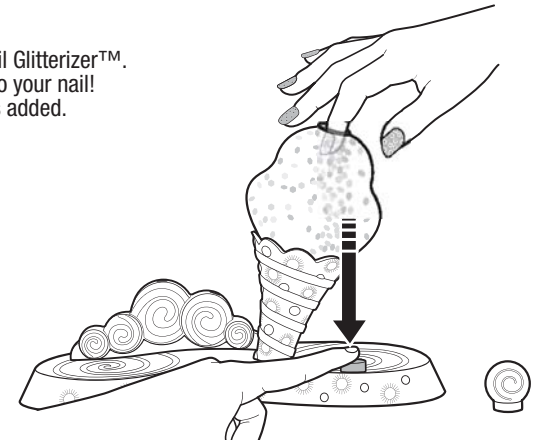
2. Apply nail polish onto one of the stick-on nails:

- 1 -Snap off stick-on nail from spiral.
- 2 -Remove sticker from sheet, remove protective backing from sticker, and apply to your nail.
- 3 -Remove the top protective sticker on the nail. Press on the nail removed from the spiral.
- 4 -Apply nail polish on the stick-on nail.

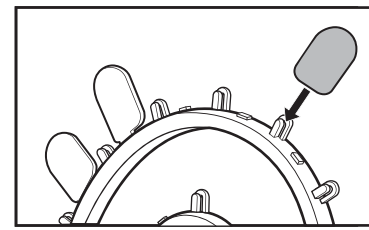


4

Dip 1 finger in the hole on top of Nail Glitterizer™. Press ON/OFF button to add glitter to your nail! The longer you press, more glitter is added.



Store detached nails on spirals.



Spirals can be displayed by putting into holes on base.

