



5+

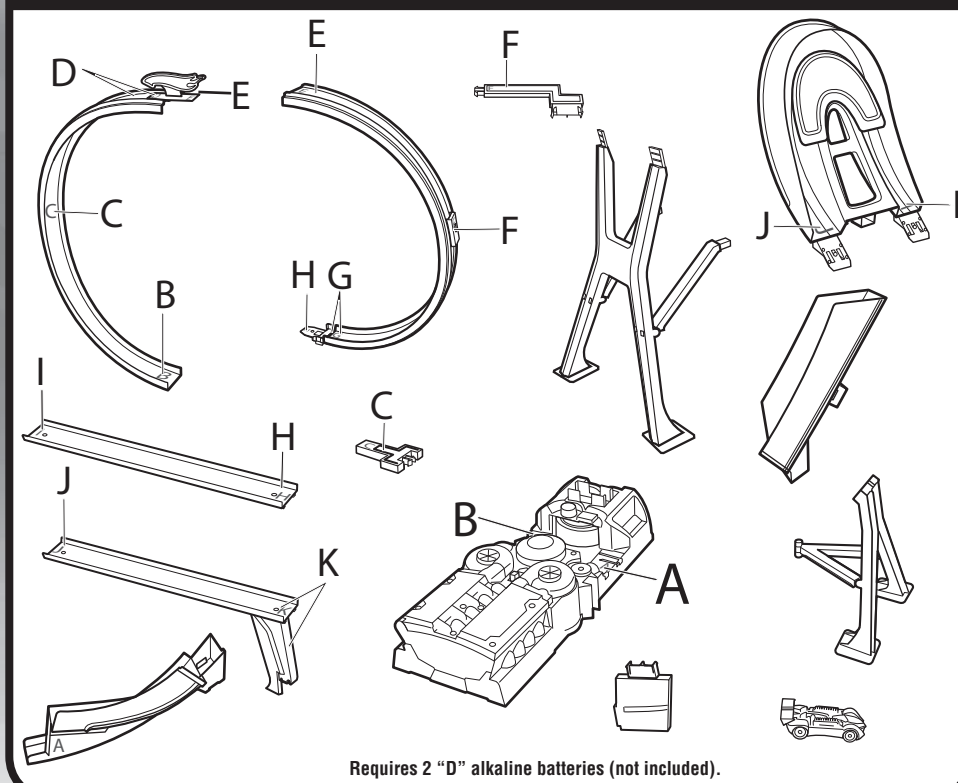


STARTER SET TRACK SET

INSTRUCTIONS

Please keep these instructions for future reference as they contain important information.

CONTENTS



Requires 2 "D" alkaline batteries (not included).

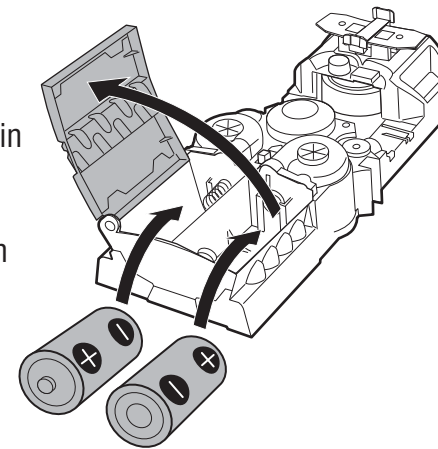
© 2008 Mattel, Inc. All Rights Reserved. Mattel, Inc., 333 Continental Blvd., El Segundo, CA 90245 U.S.A. Consumer Relations 1 (800) 524-8697 service.mattel.com. • Mattel Canada Inc., Mississauga, Ontario L5R 3W2. You may call us free at 1-800-524-8697. • Mattel U.K. Ltd., Vanwall Business Park, Maidenhead SL6 4UB, Helpline 01628500303 • Mattel Australia Pty., Ltd., Richmond, Victoria, 3121 Consumer Advisory Service - 1300 135 312. • Mattel East Asia Ltd., Room 1106, South Tower, World Finance Centre, Harbour City, Tsimshatsui, HK, China. • Diimport & Diedarkan Oleh: Mattel SEA Ptd Ltd, (993532-P) Lot 13.5, 13th Floor, Menara Lien Hoe, Perisaran Tropicana Golf Country Resort, 47410 P.J. Tel:03-78803817, Fax:03-78803867.

To view instructions online go to: www.hotwheels.com/instructions.



BATTERY INSTALLATION/REPLACEMENT

- Install 2 new "D" alkaline batteries in the orientation (+/-) shown.
- Close battery cover.
- Replace batteries when booster can no longer propel car through the track set.



BATTERY SAFETY INFORMATION

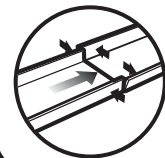
In exceptional circumstances batteries may leak fluids that can cause a chemical burn injury or ruin your product. To avoid battery leakage:

- Non-rechargeable batteries are not to be recharged.
- Rechargeable batteries are to be removed from the product before being charged (if designed to be removable).
- Rechargeable batteries are only to be charged under adult supervision (if designed to be removable).
- Do not mix alkaline, standard (carbon-zinc), or rechargeable (nickel-cadmium) batteries.
- Do not mix old and new batteries.
- Only batteries of the same or equivalent type as recommended are to be used.
- Batteries are to be inserted with the correct polarity.
- Exhausted batteries are to be removed from the product.
- The supply terminals are not to be short-circuited.
- Dispose of battery(ies) safely.
- Do not dispose of this product in a fire. The batteries inside may explode or leak.



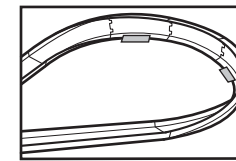
Protect the environment by not disposing of this product with household waste [2002/96/EC]. Check your local authority for recycling advice and facilities.

OPERATING TIPS



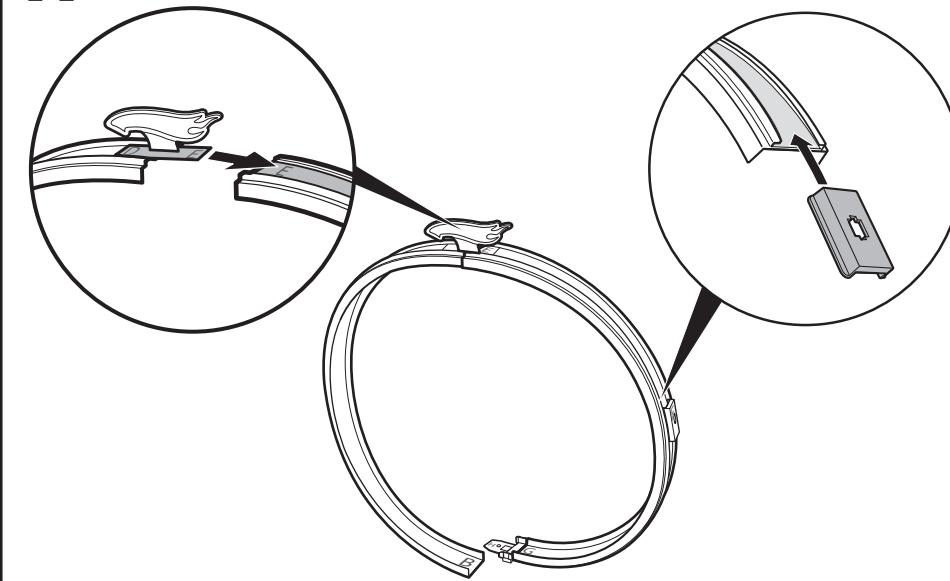
- Adjust track side walls at each connection point as shown.

TO STABILIZE SET: On carpet, use books. On smooth floor, tape base to surface.

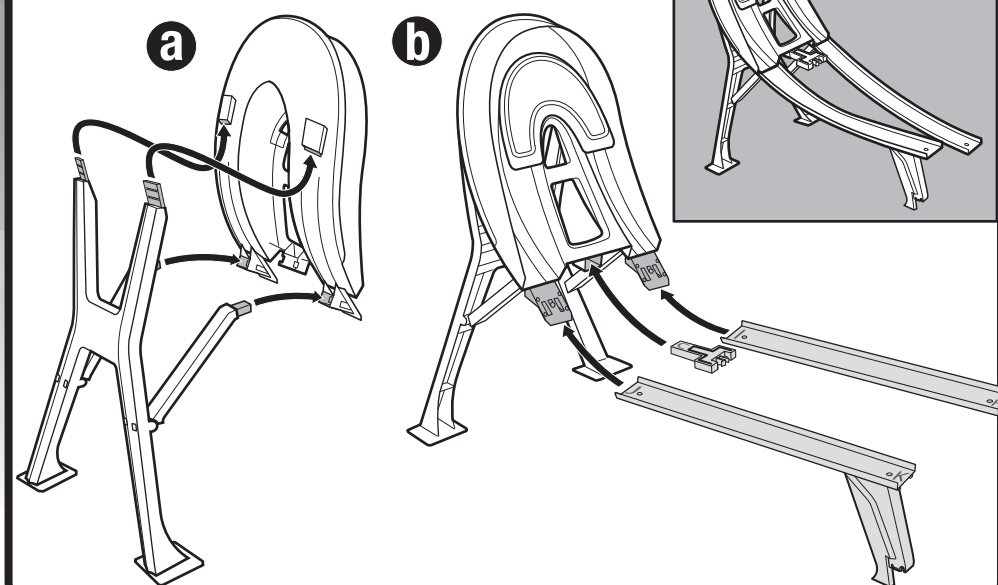


ASSEMBLY

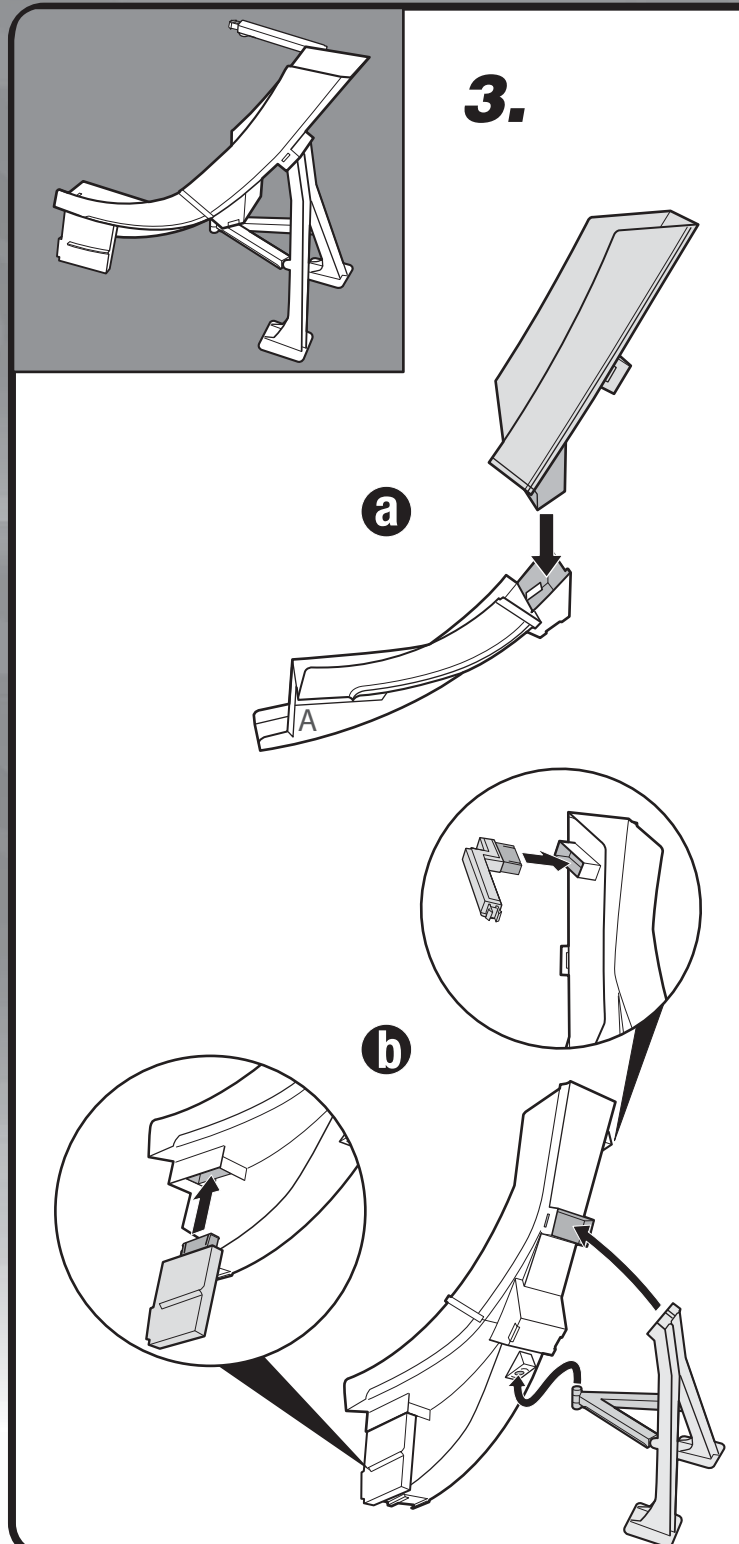
1.



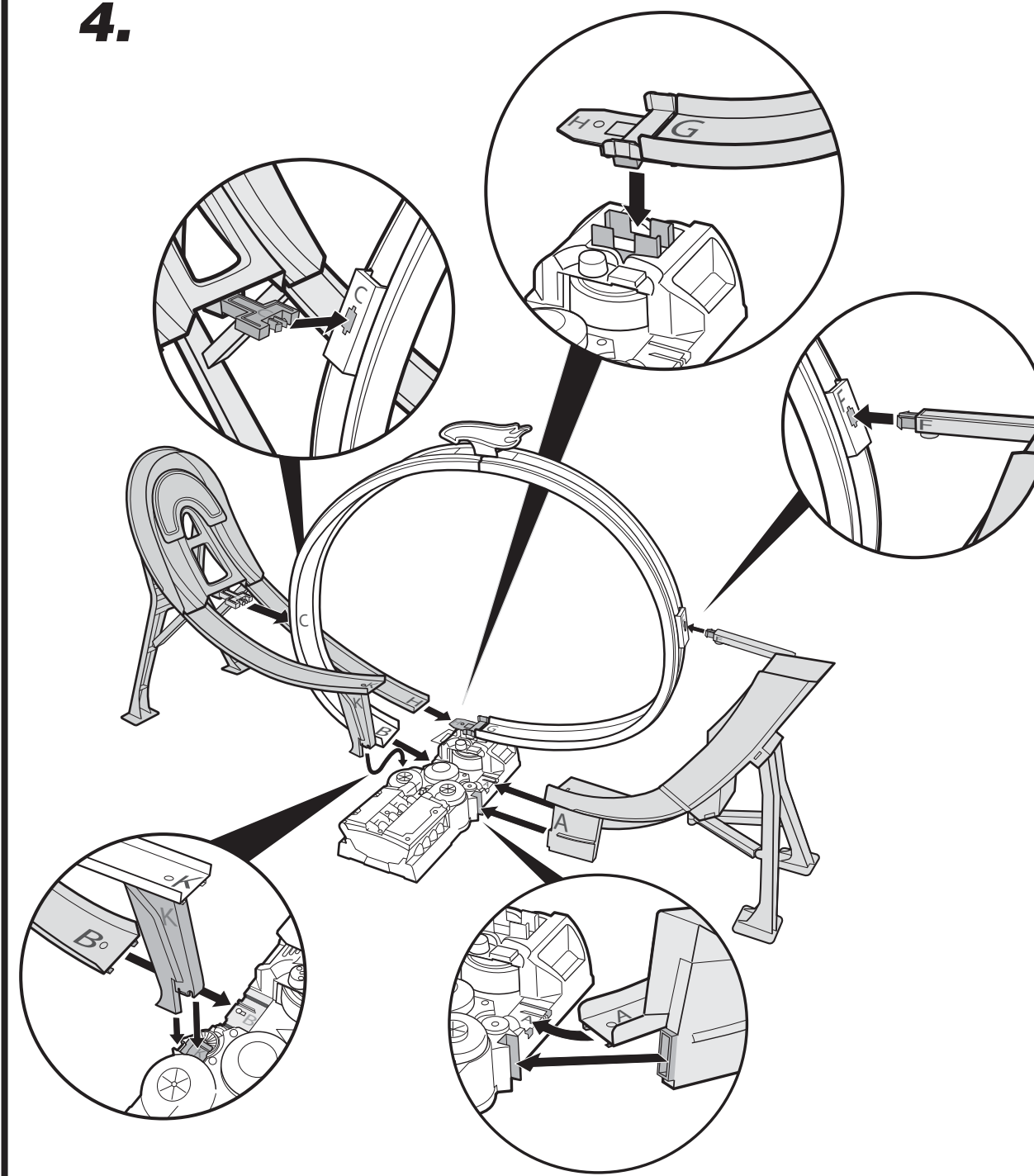
2.



3.



4.



TO PLAY

