

Please keep this instruction sheet for future reference, as it contains important information.

Requires three "AAA" batteries (included).

Adult assembly is required for battery replacement.

Tool required for battery replacement: Phillips screwdriver (not included).



Consumer Information



CONSUMER ASSISTANCE

Call toll free: 1-800-432-5437 (US & Canada only)
M-F 9AM to 7PM / SAT 11AM to 5PM (EST)

 service.fisher-price.com

Write to us at: Fisher-Price® Consumer Relations,
636 Girard Avenue, East Aurora, New York 14052.

Hearing-impaired consumers using TTY/TDD equipment,
please call 1-800-382-7470.

For countries outside the United States:

Canada: Mattel Canada Inc., 6155 Freemont Blvd.,
Mississauga, Ontario L5R 3W2; www.service.mattel.com.

Great Britain: Mattel UK Ltd, Vanwall Business Park,
Maidenhead SL6 4UB, Helpline: 01628 500303,
www.service.mattel.com/uk

Australia: Mattel Australia Pty. Ltd., 658 Church Street,
Locked Bag #870, Richmond, Victoria 3121 Australia.
Consumer Advisory Service 1300 135 312.

New Zealand: 16-18 William Pickering Drive,
Albany 1331, Auckland.

Asia: Mattel East Asia Ltd, Room 1106, South Tower,
World Finance Centre, Harbour City, Tsimshatsui, HK, China.

Note: A plastic tab is attached to the toy for in-store demonstration purposes. While the tab may have already been removed, check the toy to be sure. Open the fasteners on the back of the toy. Pull and remove the plastic tab from the toy. Throw the plastic tab away.

FCC Statement (United States Only)

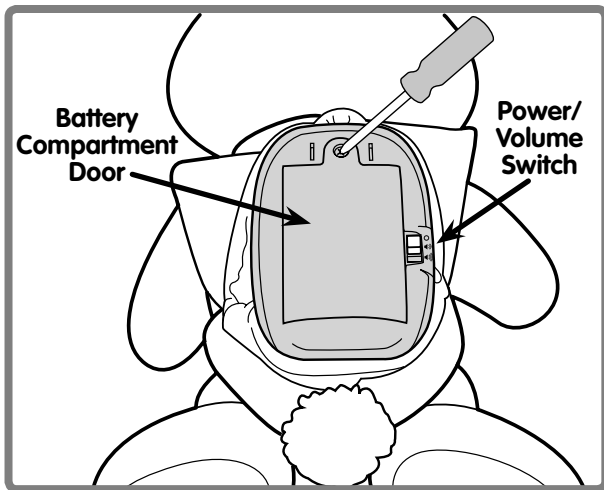
This equipment has been tested and found to comply with the limits for a Class B digital device, pursuant to Part 15 of the FCC Rules. These limits are designed to provide reasonable protection against harmful interference in a residential installation. This equipment generates, uses and can radiate radio frequency energy and, if not installed and used in accordance with the instructions, may cause harmful interference to radio communications. However, there is no guarantee that interference will not occur in a particular installation. If this equipment does cause harmful interference to radio or television reception, which can be determined by turning the equipment off and on, the user is encouraged to try to correct the interference by one or more of the following measures:

- Reorient or relocate the receiving antenna.
- Increase the separation between the equipment and receiver.
- Consult the dealer or an experienced radio/TV technician for help.

Note: Changes or modifications not expressly approved by the manufacturer responsible for compliance could void the user's authority to operate the equipment.

This device complies with Part 15 of the FCC Rules. Operation is subject to the following two conditions: (1) this device may not cause harmful interference and (2) this device must accept any interference received, including interference that may cause undesired operation.

Battery Replacement



For best performance, we recommend replacing the batteries that came with this toy with three, new "AAA" (LR03) alkaline batteries.

- Open the fasteners on the back of the toy.
- Locate the battery compartment inside.
- Loosen the screw in the battery compartment door with a Phillips screwdriver. Remove the battery compartment door. Remove the worn batteries and throw them away.
- Insert three "AAA" (LR03) **alkaline** batteries.

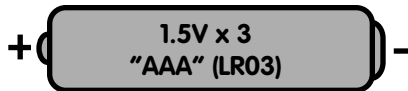
Hint: We recommend using **alkaline** batteries for longer battery life.

- Replace the battery compartment door and tighten the screw. Close the fasteners.
- When sounds from this toy become faint or stop, it's time for an adult to change the batteries!



- Protect the environment by not disposing of this product with household waste (2002/96/EC). Check your local authority for recycling advice and facilities (Europe only).

Battery Safety Information



In exceptional circumstances, batteries may leak fluids that can cause a chemical burn injury or ruin your product. To avoid battery leakage:

- Do not mix old and new batteries or batteries of different types: alkaline, standard (carbon-zinc) or rechargeable (nickel-cadmium).
- Insert batteries as indicated inside the battery compartment.
- Remove batteries during long periods of non-use. Always remove exhausted batteries from the product. Dispose of batteries safely. Do not dispose of this product in a fire. The batteries inside may explode or leak.
- Never short-circuit the battery terminals.
- Use only batteries of the same or equivalent type, as recommended.
- Do not charge non-rechargeable batteries.
- Remove rechargeable batteries from the product before charging.
- If removable, rechargeable batteries are used, they are only to be charged under adult supervision.

Care

- Wipe this toy with a clean cloth dampened with a mild soap and water solution. Do not immerse this toy.
- This toy has no consumer serviceable parts. Do not take this toy apart.

3 Fun Songs - You Can Sing Along!

Bunny Song

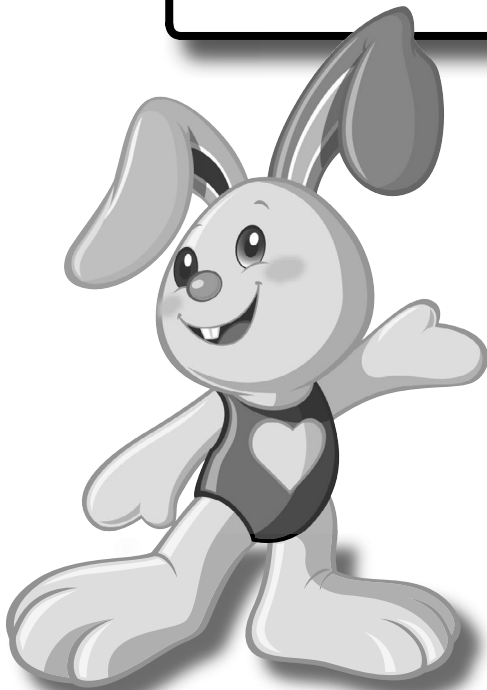
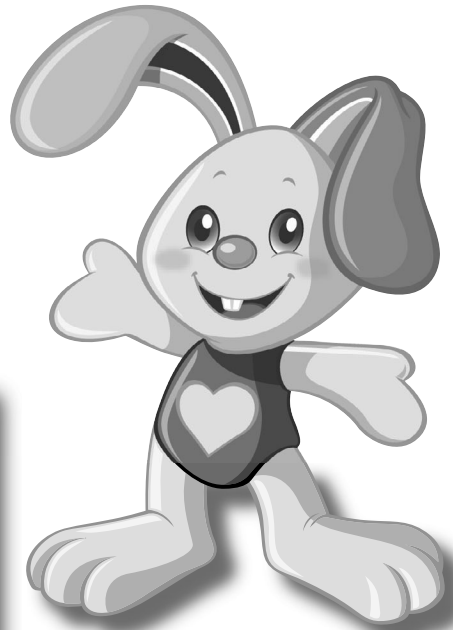
How about a bunny hug
From someone soft and sweet
With silky ears, a fuzzy tail
And great big bumpy feet!

Counting Song

1-2-3-4-5

6-7-8-9-10

Come and count along with me
We'll start with 1 2 3! Wee!



Hopping Song

Oh, I like to walk
And I like to skip
And I even like to run

Of all the different ways to move
Here's my favorite one
Hopping here
Hopping there
Hopping, hopping everywhere

Oh, I love to hop the whole day long
And sing my hopping song!

3 Ways to Play and Learn - 123 Learning Time, 🎵 Music Time, and 🌀 Imagination!

- Open the fasteners on the back of the toy to locate the power/volume switch. Slide the switch to on with low volume 🗣️ or on with high volume 🗣️🗣️.
- Locate the on/off switch on the bunny's left foot. Press once to turn the bunny on. Press again to turn off.
- Locate the mode select switch on the bunny's right foot. Press to change modes from learning time **123** to music time 🎵 or to imagination 🌀.
- If the toy begins to operate erratically you may need to reset the electronics. Slide the power/volume switch on the back of the toy off and then back on.



Hint: If you'd like your child to play with this toy without sounds simply slide the power/volume switch on the back of the toy off .

123 Learning Time - Press the bunny's hand to count along to a song. Press the tummy to learn opposites.

🎵 Music Time - Press the bunny's hand or tummy and sing along.

🌀 Imagination - Press the bunny's hand for a song or press the tummy for playful phrases. Tip the bunny upside down. The bunny knows whether it's up or down.