



MICKEY MOUSE  
CLUBHOUSE

# Mickey's Magic Choo Choo

Please keep these instructions for future reference as they contain important information.

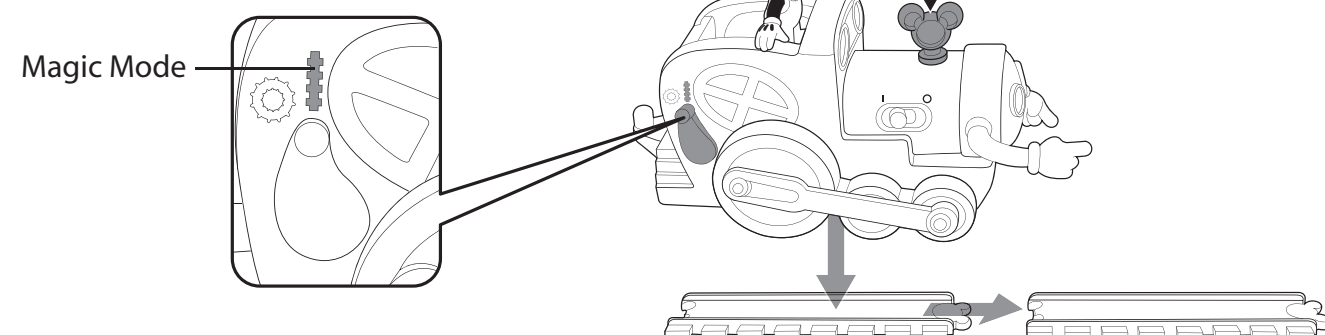
- **NOTE:** Before you begin play, make sure the ON/OFF switch is in the ON position. The ON/OFF switch is located on the side of the train.

## HOW TO PLAY

There are two ways to play with Mickey's Magic Choo Choo!

### Magic Mode

- Place the 2 straight pieces of track end to end on your floor, as shown.
- Place the train on the rear piece of track, as shown.
- Set the mode switch to MAGIC (the straight track icon).
- Press the "Mickey" Button on the top of the train to make it go!



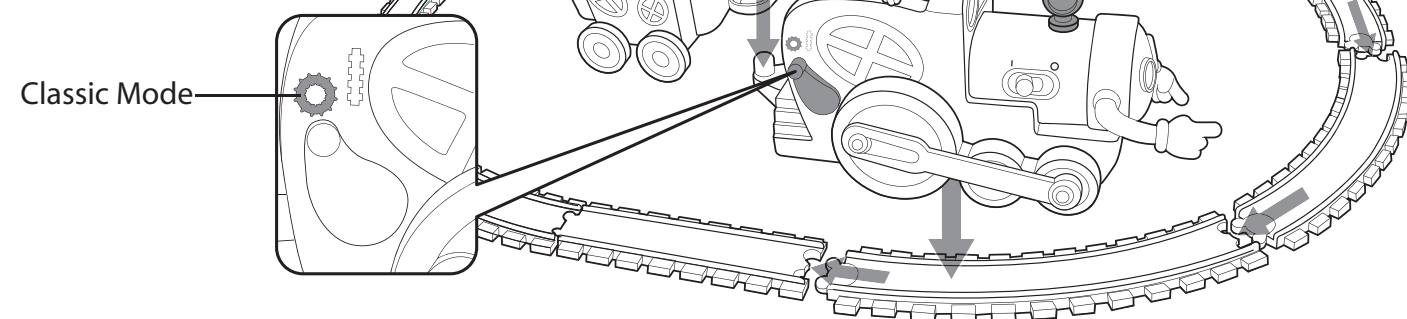
The train will move forward, magically feeding the track from back to front as it goes!

### NOTE:

- If train is not picking up the track properly, check to make sure the track pieces and the bottom of the train are free of any dust or debris.
- For optimum performance, use on hard smooth surface or low pile carpet.

### Classic Mode

- Set up the track pieces in a circle or oval.
- Place the train on the track.
- Attach the cart.
- Set the mode switch on the train to CLASSIC (the circular track icon).
- Press the "Mickey" Button on the top of the train to make it go!



**ADULT ASSEMBLY REQUIRED.** No tools required for assembly.

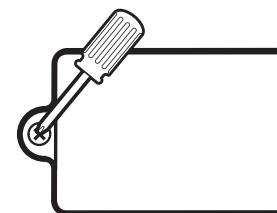
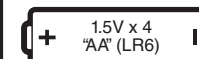
### NOTE:

- Under certain conditions, the product can malfunction due to static electricity. If this occurs, simply reset the toy by turning the power switch off and then on again.
- This product contains a magnet. Do not use around items that are sensitive to or affected by magnetic fields.

## BATTERY INSTALLATION

Unscrew and lift cover away from front of product.  
Install batteries as indicated inside the battery compartment.  
For longer life use only alkaline batteries.  
Requires 4 "AA" (LR6) batteries.

Required tool: Phillips screwdriver (not included)



### BATTERY SAFETY INFORMATION

In exceptional circumstances batteries may leak fluids that can cause a chemical burn injury or ruin your toy (product). To avoid battery leakage:

- Non-rechargeable batteries are not to be recharged.
- Rechargeable batteries are to be removed from the toy before being charged (if designed to be removable).
- Rechargeable batteries are only to be charged under adult supervision (if designed to be removable).
- Do not mix alkaline, standard (carbon-zinc), or rechargeable (nickel-cadmium) batteries.
- Do not mix old and new batteries.
- Only batteries of the same or equivalent type as recommended are to be used.
- Batteries are to be inserted with the correct polarity.
- Exhausted batteries are to be removed from the product.
- The supply terminals are not to be short-circuited.
- Dispose of battery(ies) safely.
- Do not dispose of this product in a fire. The batteries inside may explode or leak.

This equipment has been tested and found to comply with the limits for a Class B digital device, pursuant to part 15 of the FCC rules. These limits are designed to provide reasonable protection against harmful interference in a residential installation. This equipment generates, uses and can radiate radio frequency energy and, if not installed and used in accordance with the instructions, may cause harmful interference to radio communications. However, there is no guarantee that interference will not occur in a particular installation. If this equipment does cause harmful interference to radio or television reception, which can be determined by turning the equipment off and on, the user is encouraged to try to correct the interference by one or more of the following measures: Reorient or relocate the receiving antenna.

Increase the separation between the equipment and receiver.

Connect the equipment into an outlet on a circuit different from that to which the receiver is connected.

Consult the dealer or an experienced radio/TV technician for help.

Mattel Inc. 333 Continental Blvd. El Segundo, CA (310) 252-2400

NOTE: Changes or modifications not expressly approved by the manufacturer responsible for compliance could void the user's authority to operate the equipment.

This device complies with part 15 of the FCC Rules. Operation is subject to the following two conditions:

- (1) This device may not cause harmful interference, and
- (2) this device must accept any interference received, including interference that may cause undesired operation.

- THIS CLASS B DIGITAL APPARATUS COMPLIES WITH CANADIAN ICES-003.
- CET APPAREIL NUMERIQUE DE LA CLASSE B EST CONFORME A LA NORME NMB-003 DU CANADA.

- Operation is subject to the following two conditions: (1) this device may not cause interference, and (2) this device must accept any interference, including interference that may cause undesired operation of the device.
- L'utilisation de ce produit est sujette aux conditions suivantes : (1) il ne doit pas produire de brouillage et (2) il doit pouvoir tolérer tout brouillage reçu, même si ce brouillage est susceptible de compromettre son fonctionnement.

© Disney

Visit the Disney Web site at [www.disney.com](http://www.disney.com)

Fisher-Price, Inc., a subsidiary of Mattel, Inc., East Aurora, NY 14052 U.S.A.

PRINTED IN CHINA.

Manufactured for Fisher-Price. ©2009 Mattel, Inc. All Rights Reserved.

® and ™ designate U.S. trademarks of Mattel, Inc., unless otherwise indicated.

For countries outside the United States:

Canada: Mattel Canada Inc., 6155 Freemont Blvd., Mississauga, Ontario L5R 3W2; [www.service.mattel.com](http://www.service.mattel.com).

Great Britain: Mattel U.K. Ltd., Vanwall Business Park, Maidenhead SL6 4UB. Helpline 01628 500303.

[www.service.mattel.com/uk](http://www.service.mattel.com/uk)

Australia: Mattel Australia Pty. Ltd., 658 Church Street, Locked Bag #870, Richmond, Victoria. 3121 Australia.

Consumer Advisory Service - 1300 135 312.

New Zealand: 16-18 William Pickering Drive, Albany 1331, Auckland.

Asia: Mattel East Asia Ltd., Room 1106, South Tower, World Finance Centre, Harbour City, Tsimshatsui, HK, China.



Protect the environment by not disposing of this product with household waste (2002/96/EC). Check your local authority for recycling advice and facilities (Europe only).



P3806

Item : P3806-0920G3  
Version : EL  
Size : A4  
Paper : Woodfree Paper 80 gsm  
Color : 1C  
Date : June 29, 2009 (WC)

ID: P3806-0920G3