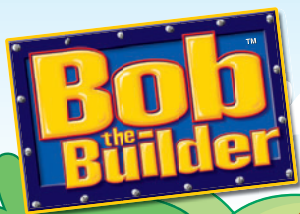


Fisher-Price

P5451

SMARTCYCLE

PHYSICAL LEARNING ARCADE SYSTEM



NOTICE ABOUT EPILEPSY AND SEIZURES

PLEASE READ THIS NOTICE BEFORE YOU OR YOUR CHILD USE ANY VIDEO GAME.

A very small portion of the population have a condition which may cause a momentary loss of consciousness when viewing certain kinds of flashing lights or patterns that are commonly present in our daily environment. This condition may cause seizures while watching some kinds of television pictures or playing certain video games. Players who have not had any previous seizures may nonetheless have an undetected epileptic condition.

If you or anyone in your family has experienced symptoms linked to an epileptic condition (e.g. a seizure or loss of awareness), consult your physician before playing video games. We recommend that parents observe their children while they play video games. If you or your child experience any of the following symptoms such as dizziness, altered vision, eye or muscle twitching, involuntary movements, loss of awareness, disorientation or convulsions, **DISCONTINUE USE IMMEDIATELY** and consult your physician.

Additionally, please follow these precautions whenever playing a video game:

- Do not sit or stand too close to the television screen. Play as far back from the screen as possible.
- Do not play if you are tired or need sleep.
- Always play in a well lit room.
- Be sure to take a 10-15 minute break every hour while playing.

CONSUMER INFORMATION

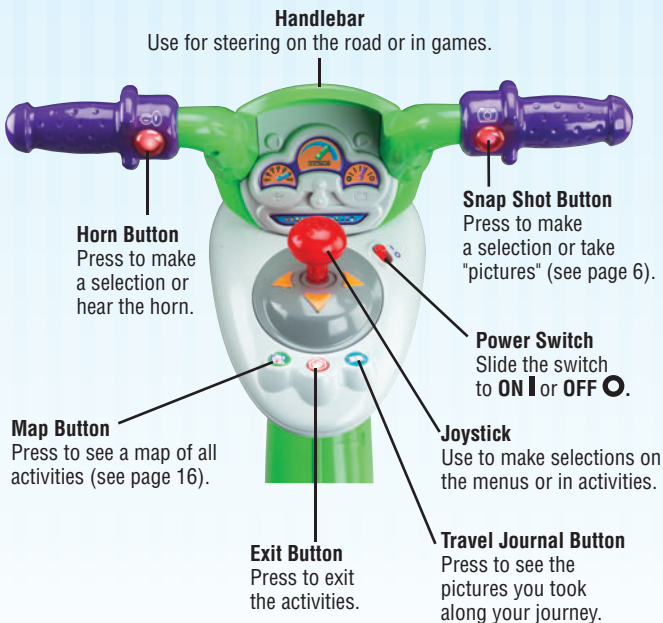
- Please keep these instructions for future reference, as they contain important information.

GETTING STARTED



- Insert the game cartridge into the socket in the side of the cycle. Push to be sure it's fully inserted.
- Turn your TV or DVD/VCR power **ON**.
- Slide the power switch on the cycle to **ON I**.
- To find the picture on your TV screen, set your TV's or DVD/VCR's mode selector to INPUT or VIDEO IN.

CYCLE CONTROLS





CHOOSE A RIDE



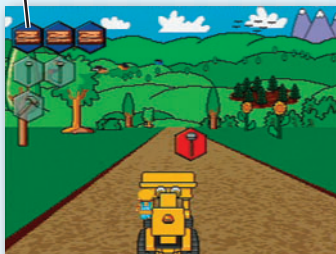
Customize your vehicle!

- Use the joystick to scroll through vehicle choices. Press a red handlebar button to make your selection.
- Repeat this process to choose the color and horn for your vehicle.



SUNFLOWER VALLEY

Supplies




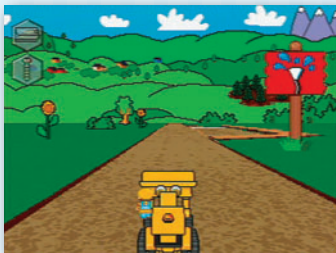
Find the supplies.

- Pedal the cycle to move down the road. *The faster you pedal the faster you go!* Use the handlebars to steer.
- Collect the supplies shown in the upper left corner of the screen to see what you can build. Simply drive into them. Don't bump into the other objects.



Taking snap shots.

- Press the right handlebar button  to take snap shots (only in this activity).



Off ramps

- Keep traveling down the road or head onto an off-ramp for other fun games and activities. Simply bear to the side of the road as you see one approaching.

Hint: If you miss your ramp, you can pedal in reverse to back up.

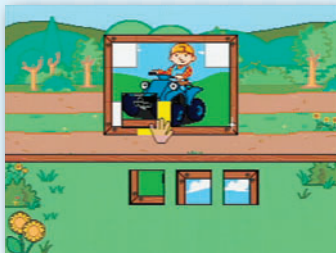



MUD BLAST



Clean the puzzle pieces to help finish the puzzle!

- Pedal the cycle to fill the water pump.
- Use the handlebars to move the hose and press a red handlebar button to spray water.
- Aim the hose at the muddy puzzle pieces to clean them off.

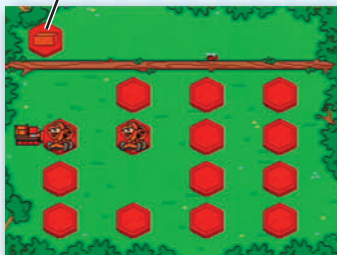


- Use the joystick to move the pieces onto the puzzle. Press a red handlebar button to put the piece in place.
- Collect more puzzle pieces in every level!
- When you're finished with this activity, press the exit button  to return to the road. Pedal to the next activity.




MATCH THE TILES

Matching Tiles



Find the matching tiles!

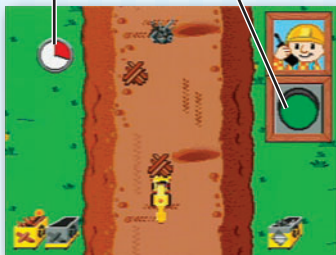
- Use the joystick to choose a tile and press a red handlebar button to select it. Repeat to find a matching tile.
- Look at the top of the screen to see the tiles you have already matched!
- When you're finished with this activity, press the exit button  to return to the road. Pedal to the next activity.



RED LIGHT, GREEN LIGHT

Timer

Light

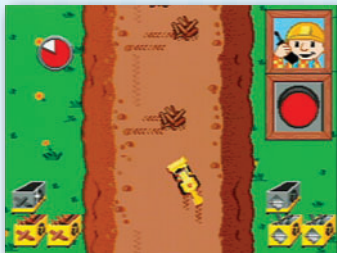



Help fill the recycling bins!

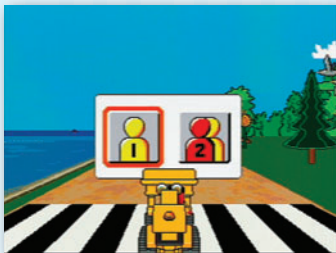
- Listen to the number of bins you need to fill.
- When Bob says green light, pedal the cycle and collect as much wood and metal as you can.



THE BIG RACE

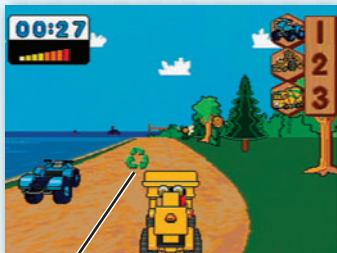


- When Bob says red light, stop pedalling until he says green light again.
- Fill as many bins as you can before time runs out!
- There are even more bins in every level!
- When you're finished with this activity, press the exit button  to return to the road. Pedal to the next activity.



***Pedal as fast as you can
to the finish line!***

- Use the joystick to choose 1 Player or 2 Player game. Press a red handlebar button to select the game.

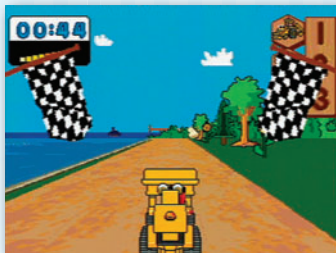


Recycling Sign


1 Player

- Pedal down the road as fast as you can to the finish line. Try to speed past the other characters. Get to the finish line first and *you win!*

Hint: Collect recycling signs along the way for a speed boost!



2 Player

- Each player takes a turn. Pedal down the road as fast as you can to the finish line. Look at your time.
- Now it's time for *Player 2* to beat your time.
- The player with the fastest time wins.
- When you're finished with this activity, press the exit button  to return to the road. Pedal to the next activity.



BUILD A WOOD SHED

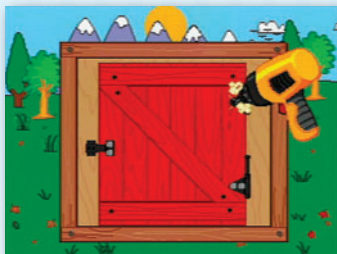


***Help Bob the Builder build
a wood shed!***

- Pedal the cycle to help bulldoze the area for the shed and count how many feet long the shed will be.
- Move the handlebars to help saw the wood for the shed.




- Use the joystick to scroll through roof choices. Press a red handlebar button to select it.
- Repeat this process to choose a door.



- Next, help attach the door to the shed.
- Pedal the cycle to drill a hole in the door. Next, move the handlebars to turn the screwdriver. Then, press a red handlebar button to hammer the nails.



- Move the joystick and press a red handlebar button to choose a paint color. Move the joystick to spray paint the shed.
- When you're finished with this activity, press the exit button  to return to the road. Pedal to the next activity.

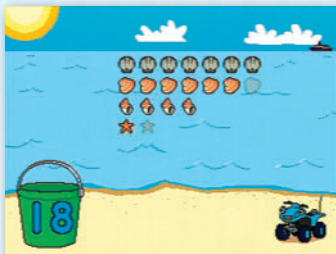
DUNE JUMPING

Timer



Collect as many sea shells as you can before time runs out!

- Pedal the cycle to ride along the beach.
- Press a red handlebar button to jump and collect sea shells.
- Look at the bucket to see how many sea shells you have collected.



- Then, count how many sea shells you collected! Move the joystick and press a red handlebar button to make your selection.

Level 1 - Count how many sea shells you collected.

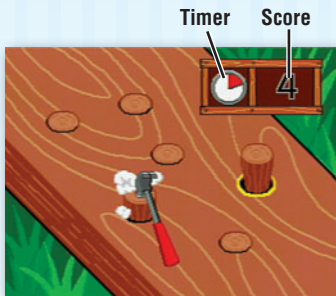
Level 2 - Count even more sea shells.

Level 3 - Add the sea shells.

- When you're finished with this activity, press the exit button  to return to the road. Pedal to the next activity.




BONUS ACTIVITY



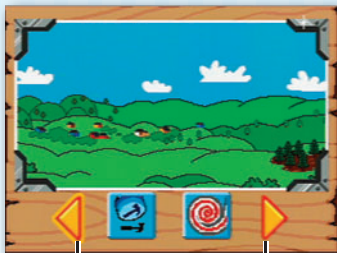
Hammer the pegs!

- Complete all the activities to unlock the bonus activity.
- Move the joystick to hammer as many pegs as you can before time runs out!

- Check your score to see how many pegs you hammered!
- When you're finished with this activity, press the exit button  to return to the road. Pedal to the next activity.




TRAVEL JOURNAL





See previous
snap shot

See next
snap shot

- Press the travel journal button . Then use the joystick and handlebar buttons to review and select a snap shot.

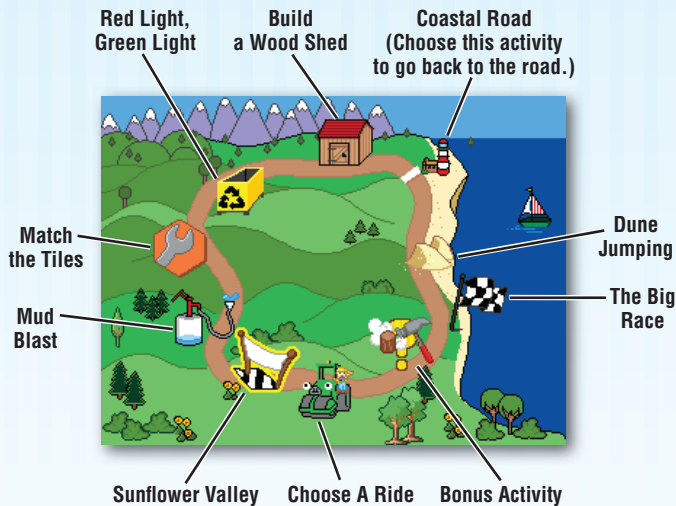



Stamp Tool Erase

- Next, use the joystick and handlebar buttons to select the stamp tool  to decorate your picture.
- Choose a stamp with the joystick and handlebar buttons and place it on the snap shot.
- Select the erase button  to clear the screen and decorate another picture.



THE MAP



- You can travel down the road and head onto an off-ramp to access activities or simply press the map button  to visit any of the activities around the course.

CARE

- Wipe with a clean cloth dampened with a mild soap and water solution. Do not immerse.
- This product has no consumer serviceable parts. Do not take this product apart.



Protect the environment by not disposing of this product with household waste (2002/96/EC). Check your local authority for recycling advice and facilities (Europe only).

CONSUMER INFORMATION

VISIT US ON LINE AT
WWW.SERVICE.FISHER-PRICE.COM

Call our Consumer Relations Department, toll-free at **1-800-432-5437**, 9 AM - 7 PM EST Monday through Friday and 11 AM - 5 PM EST Saturday. Hearing-impaired consumers using TTY/TDD equipment, please call 1-800-382-7470. Write to us at: Fisher-Price® Consumer Relations, 636 Girard Avenue, East Aurora, New York 14052.

GREAT BRITAIN: Mattel UK Ltd. Vanwall Business Park, Maidenhead SL6 4UB.
Helpline: 01628 500303. www.service.mattel.com/uk

For countries outside the United States:

CANADA: Questions? 1-800-432-5437. Mattel Canada Inc., 6155 Freemont Blvd., Mississauga, Ontario L5R 3W2; www.service.mattel.com.

AUSTRALIA: Mattel Australia Pty. Ltd., 658 Church Street, Locked Bag #870, Richmond, Victoria 3121 Australia. Consumer Advisory Service 1300 135 312.

NEW ZEALAND: 16-18 William Pickering Drive, Albany 1331, Auckland.

ASIA: Mattel East Asia Ltd, Room 1106, South Tower, World Finance Centre, Harbour City, Tsimshatsui, HK, China.

Fisher-Price, Inc., a subsidiary of Mattel, Inc., East Aurora, NY 14052 U.S.A. ©2008 Mattel, Inc.
All Rights Reserved. ® and ™ designate U.S. trademarks of Mattel, Inc., unless otherwise indicated.

Stretch your mind with other software titles for your Smart Cycle®!

Each sold separately and subject to availability.



www.bobthebuilder.com ©2009 HIT Entertainment Limited and Keith Chapman. All Rights Reserved.
The Bob the Builder name and character, related characters and riveted logo are trademarks of HIT Entertainment Limited. Reg. U.S. & Tm. Off. and other countries. ©2009 HIT Entertainment Limited. HIT and the HIT logo are trademarks of HIT Entertainment Limited.



Thomas the Tank Engine & Friends™ Based on the Railway Series by The Reverend W Awdry.
©2009 Gullane (Thomas) Limited. Thomas the Tank Engine & Friends and Thomas & Friends are trademarks of Gullane (Thomas) Limited. Thomas the Tank Engine & Friends and Design is Reg. U.S. Pat. & Tm. Off.

Sesame Workshop®, Sesame Street®, and associated characters, trademarks and design elements are owned and licensed by Sesame Workshop. ©2009 Sesame Workshop. All rights reserved.



SCOOBY-DOO and all related characters and elements are trademarks of and © Hanna-Barbera. WB SHIELD: TM & © Warner Bros. Entertainment Inc. (s09)

©2009 Viacom International Inc. All Rights Reserved. Nickelodeon, SpongeBob SquarePants and all related titles, logos and characters are trademarks of Viacom International Inc.
Created by Stephen Hillenborg.

Stephen Hillenborg

www.fisher-price.com