



Please keep this instruction sheet for future reference, as it contains important information.

Adult assembly is required.

Tool required for assembly: Phillips screwdriver (not included).

Bins sold separately and subject to availability.

## Assembled Parts



### CAUTION

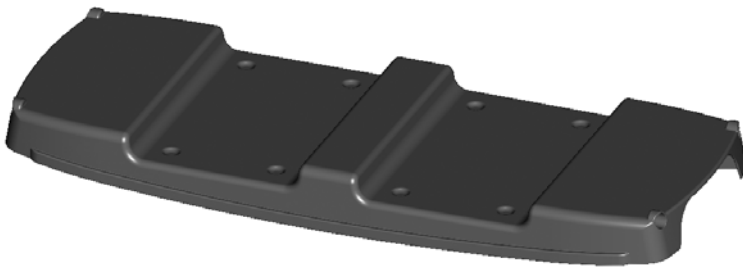
This package contains small parts in its unassembled state.  
Adult assembly is required.



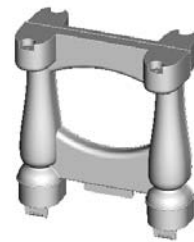
Countertop



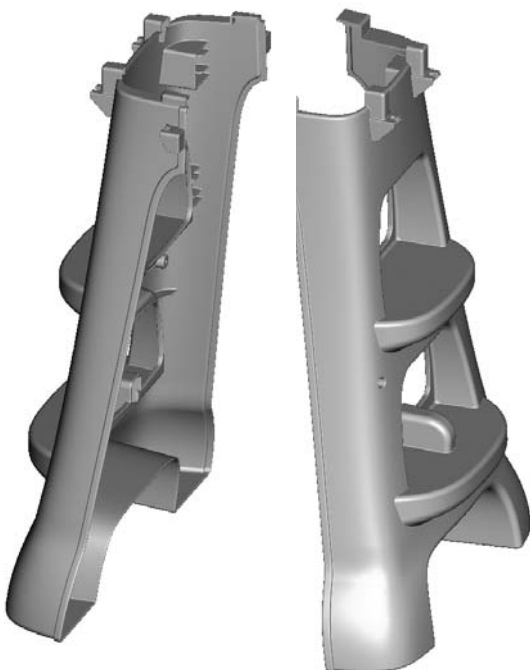
Small Shelf



Large Shelf



Small Shelf Support



2 Legs



Sink

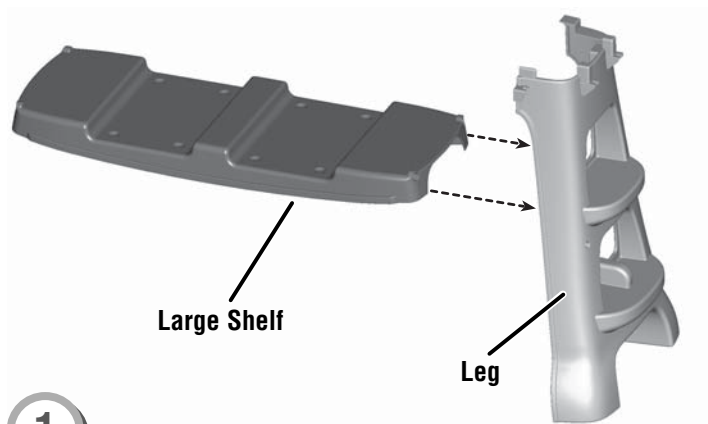


#6 x 5/8" Screw – 16

Shown Actual Size

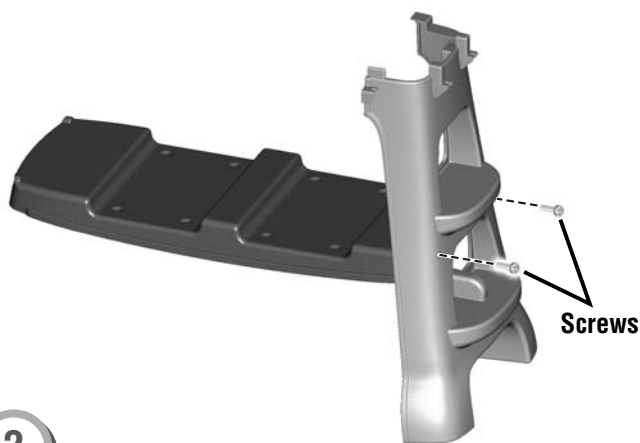
Tighten all screws with a Phillips screwdriver.  
Do not over-tighten.

# Assembly



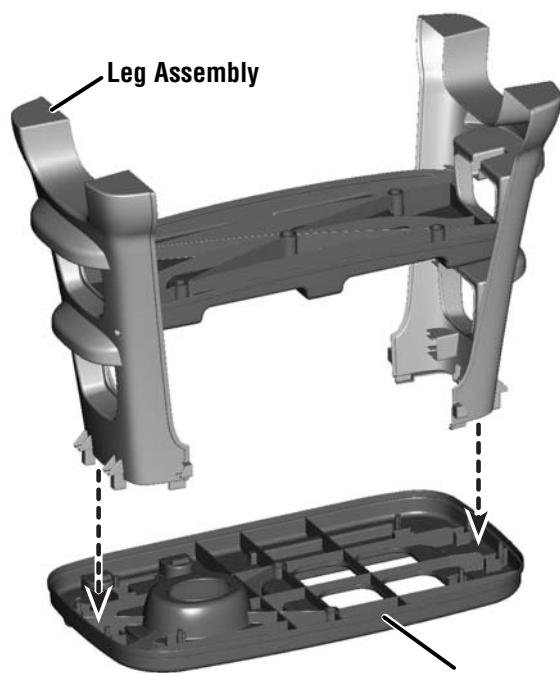
1

- Position the large shelf as shown and fit an end into the groove in a leg.



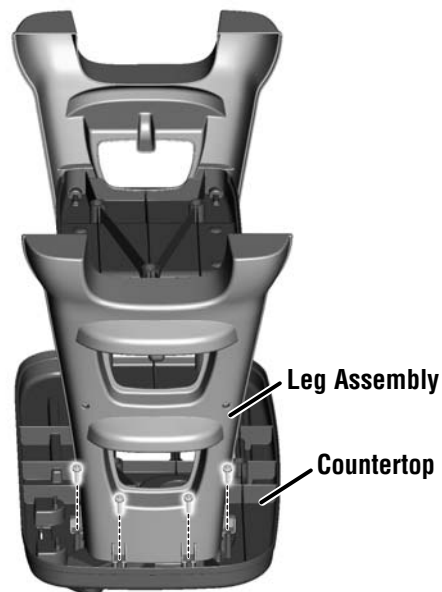
2

- Insert two screws into the holes in the outside of the leg and tighten.
- Repeat this procedure to assemble the other leg to the large shelf.



3

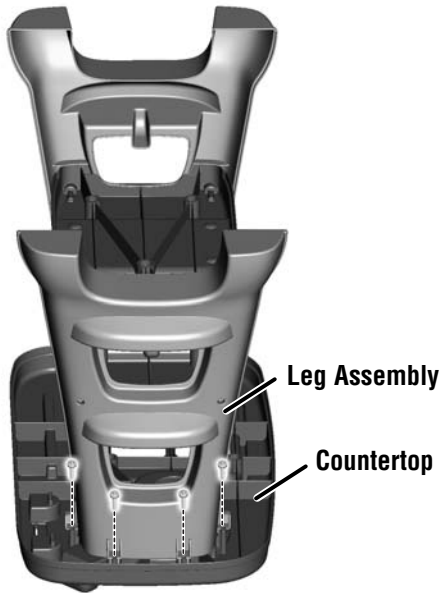
- Turn the countertop over on a flat surface..
  - Fit the leg assembly into the countertop.
- Hint: The leg assembly is designed to fit into the countertop one way. If it does not seem to fit, turn it around and try again!*



4

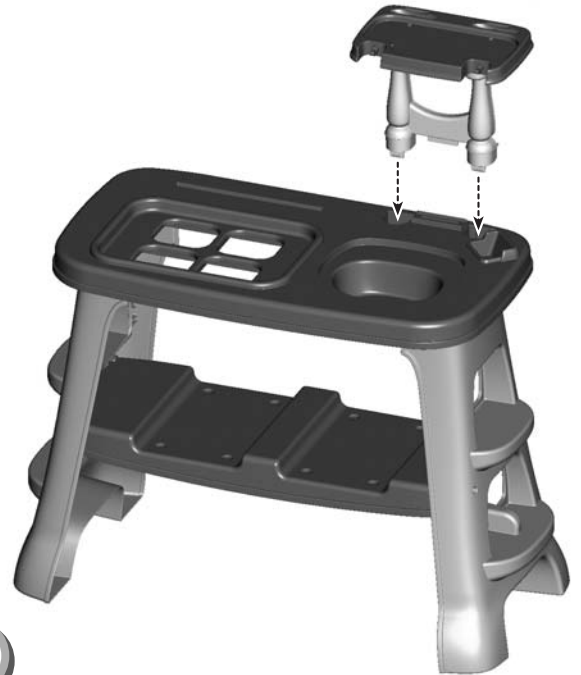
- Insert four screws into the leg assembly on one side of the countertop and tighten.

# Assembly



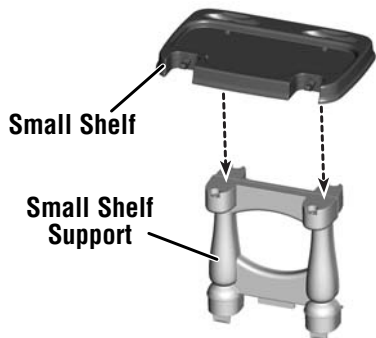
5

- On the other side of the assembly, insert four more screws into the leg assembly and tighten.
- Turn the assembly upright.



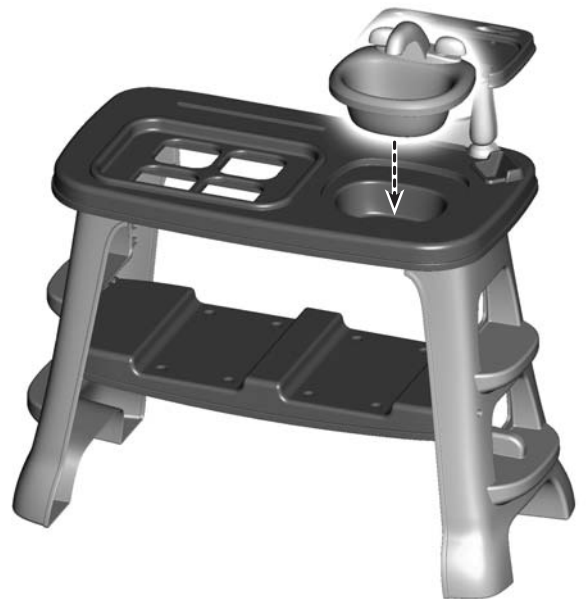
8

- Fit the small shelf assembly into the slots on the countertop.
- Push to **"snap"** in place.



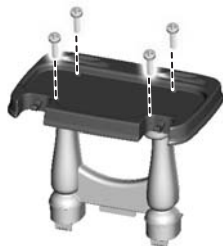
6

- Fit the small shelf onto the small shelf support.



9

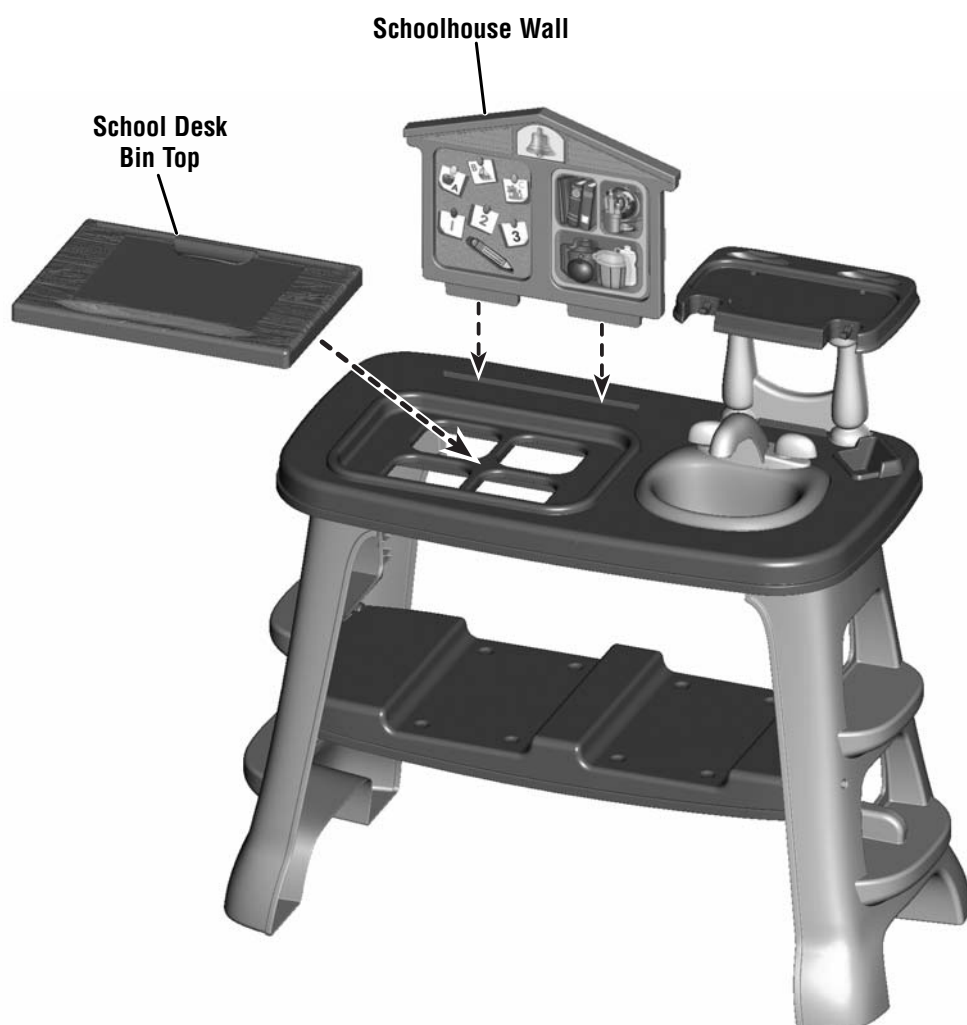
- Place the sink into the opening on the countertop.



7

- Insert four screws into the small shelf and tighten.

# Customizable Play Center



---

## Set up Your Play Center

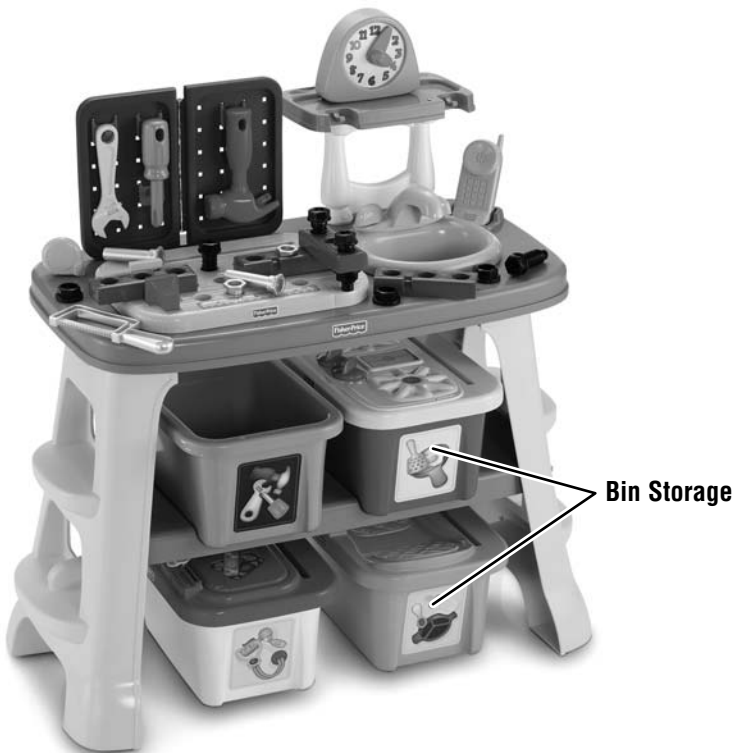
- The play center comes with a schoolhouse wall and school desk bin top. Fit the schoolhouse wall into the slot in the back edge of the countertop. Fit the school desk bin top over the opening in the countertop.
- You can purchase other themed bins separately - each with a different wall, bin top and accessories. Bins sold separately and subject to availability.



## Storage



- “Snap” the schoolhouse wall onto the underside of the school desk bin top.



- Store the bins (each sold separately and subject to availability) on and under the shelf!

## Consumer Information



**CONSUMER ASSISTANCE**  
1-800-432-5437 (US & Canada)  
1300 135 312 (Australia)  
**service.fisher-price.com**

Fisher-Price, Inc., 636 Girard Avenue, East Aurora, NY 14052.  
Hearing-impaired consumers: 1-800-382-7470.

Outside the United States:

Canada: Mattel Canada Inc., 6155 Freemont Blvd.,  
Mississauga, Ontario L5R 3W2; [www.service.mattel.com](http://www.service.mattel.com).

Great Britain: Mattel UK Ltd. Vanwall Business Park,  
Maidenhead SL6 4UB. Helpline: 01628 500303.  
[www.service.mattel.com/uk](http://www.service.mattel.com/uk)

Australia: Mattel Australia Pty. Ltd., 658 Church Street,  
Locked Bag #870, Richmond, Victoria 3121 Australia.

New Zealand: 16-18 William Pickering Drive,  
Albany 1331, Auckland.