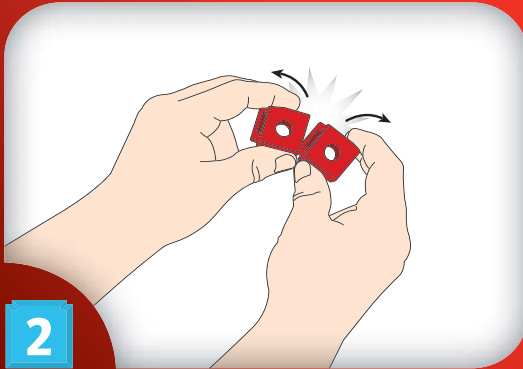
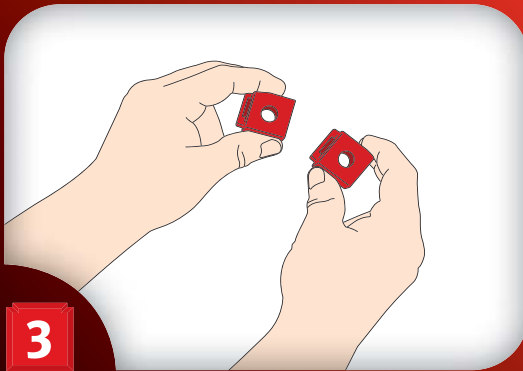


1



2



3

**UNITED STATES**

Questions? [www.service.fisher-price.com](http://www.service.fisher-price.com) 1-800-432-5437.  
Write to us at: Fisher-Price® Consumer Relations, 636 Girard Avenue, East Aurora, NY 14052.

**CANADA**

Questions? [www.service.mattel.com](http://www.service.mattel.com) 1-800-432-5437. Mattel Canada Inc., 6155 Freemont Blvd., Mississauga, Ontario L5R 3W2.

**GREAT BRITAIN**

Mattel UK Ltd, Vanwall Business Park, Maidenhead SL6 4UB.  
Helpline: 01628 500303; [www.service.mattel.com/uk](http://www.service.mattel.com/uk).

**AUSTRALIA**

Mattel Australia Pty. Ltd., 658 Church Street, Locked Bag #870, Richmond, Victoria 3121 Australia. Consumer Advisory Service 1300 135 312.

**NEW ZEALAND**

16-18 William Pickering Drive, Albany 1331, Auckland.

**ASIA**

Mattel East Asia Ltd, Room 1106, South Tower, World Finance Centre, Harbour City, Tsimshatsui, HK, China.

**MALAYSIA**

Diimport & Diedarkan Oleh: Mattel SEA Ptd Ltd. (993532-P) Lot 13.5, 13th Floor, Menara Lien Hoe, Persiaran Tropicana Golf Country Resort, 47410 PJ. Tel: 03-78803817, Fax: 03-78803867.

**BRASIL**

Importado por : Mattel do Brasil Ltda.- CNPJ : 54.558.002/0008-04 - Av. Tenente Marques, 1246 - Sala 02 - 2º. Andar - 07770-000 - Polvilho - Cajamar - SP - Brasil. Serviço de Atendimento ao Consumidor (SAC): 0800-550780 - [sac@mattel.com](mailto:sac@mattel.com).

Fisher-Price, Inc., a subsidiary of Mattel, Inc., East Aurora, NY 14052 U.S.A.  
©2009 Mattel, Inc. All Rights Reserved ® and ™ designate U.S. trademarks of Mattel, Inc.

Fisher-Price, Inc., une filiale de Mattel, Inc., East Aurora, NY 14052, États-Unis.  
©2009 Mattel, Inc. Tous droits réservés. ® et ™ désignent des marques de Mattel, Inc. aux É.-U.

Fisher-Price®

# TRIO

BRICKS, STICKS AND PANELS™



[www.triobuilding.com](http://www.triobuilding.com)



x24



x1



x2

=



x12



x5



x4



x1



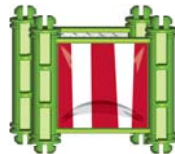
x1



x1



x2



x2



x1



x1



x1



x1



x8



x2



x20



x8



x1



x7



x5



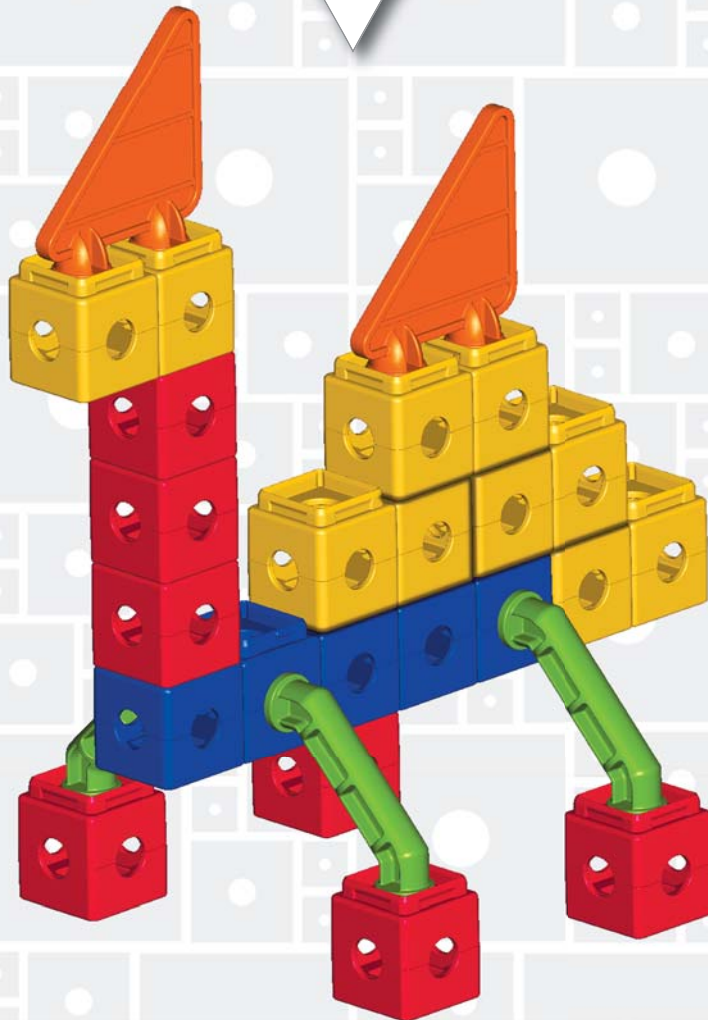
x1



x2



x4





x1



x1



x1



x2



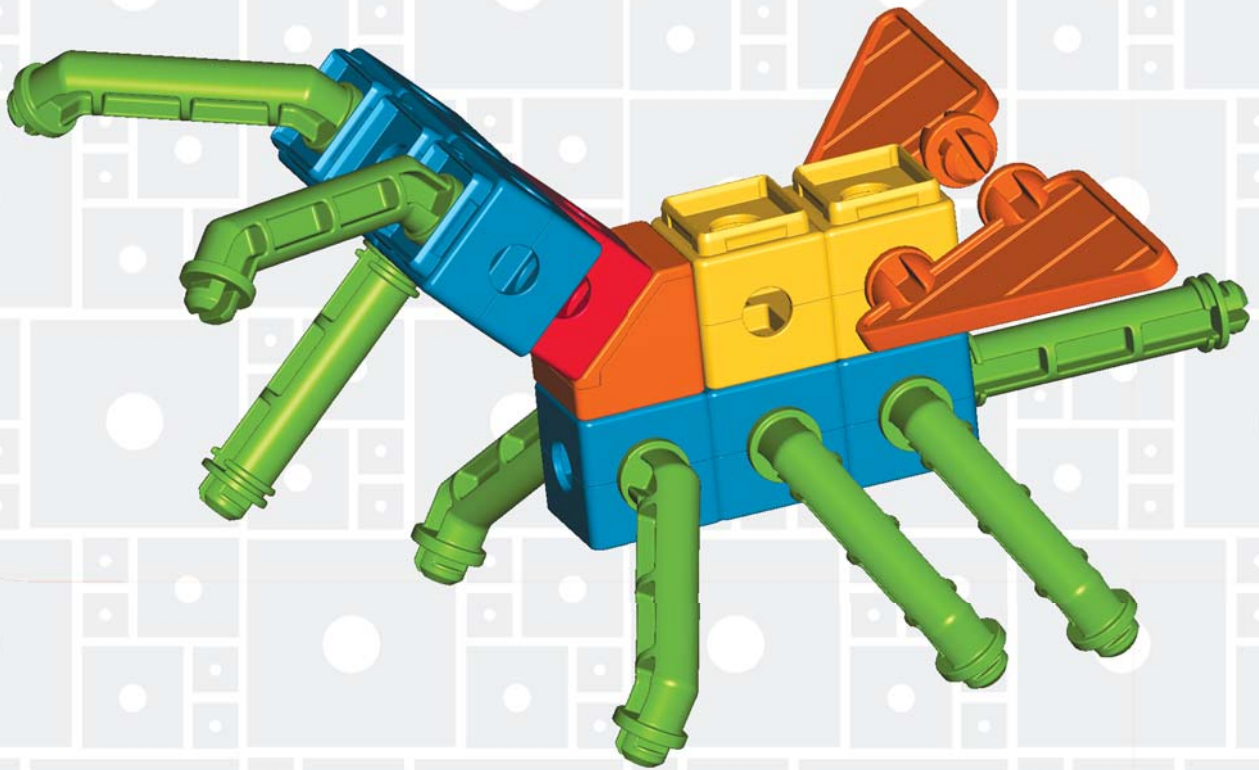
x2



x2



x8

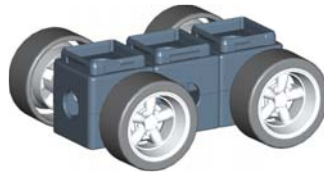




x2



x1



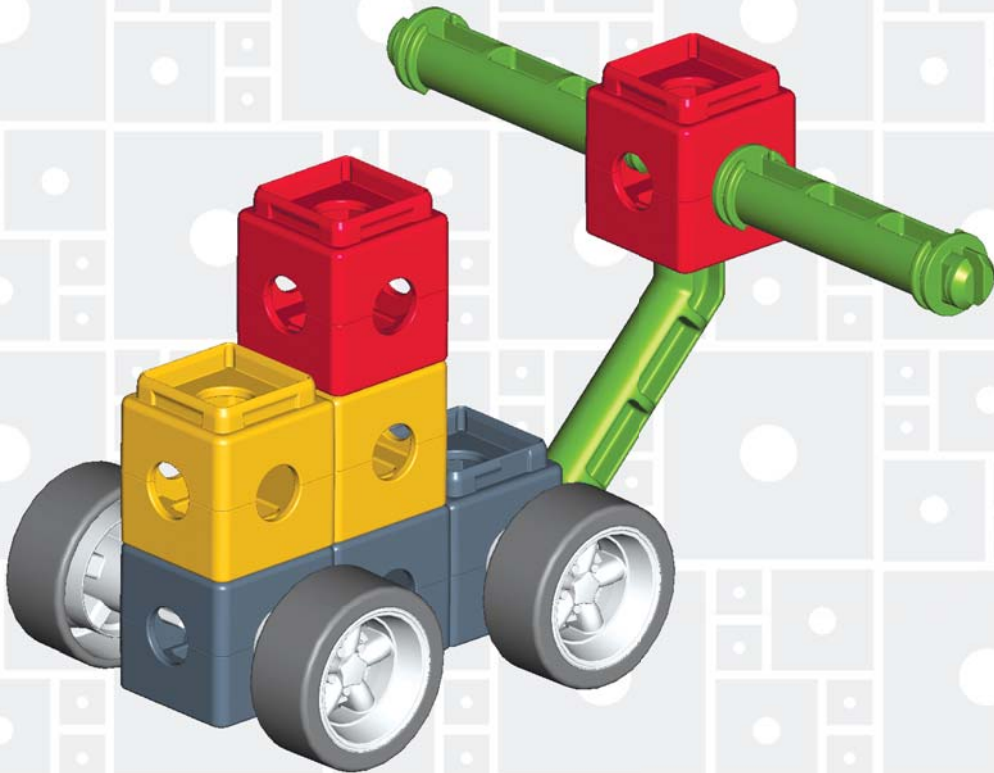
x1



x2



x1





x8



x1



x4



x4



x2



x1



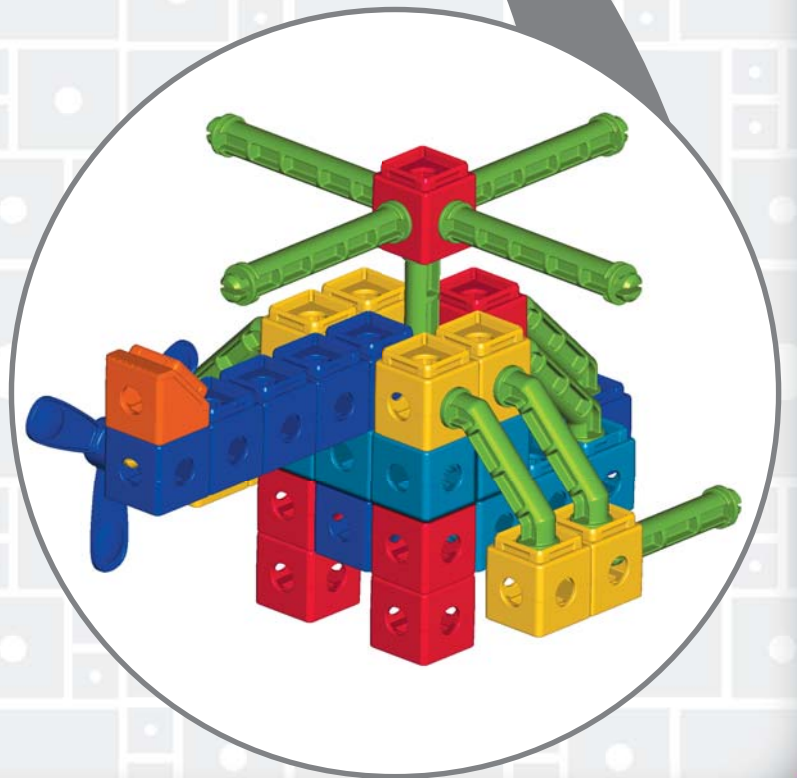
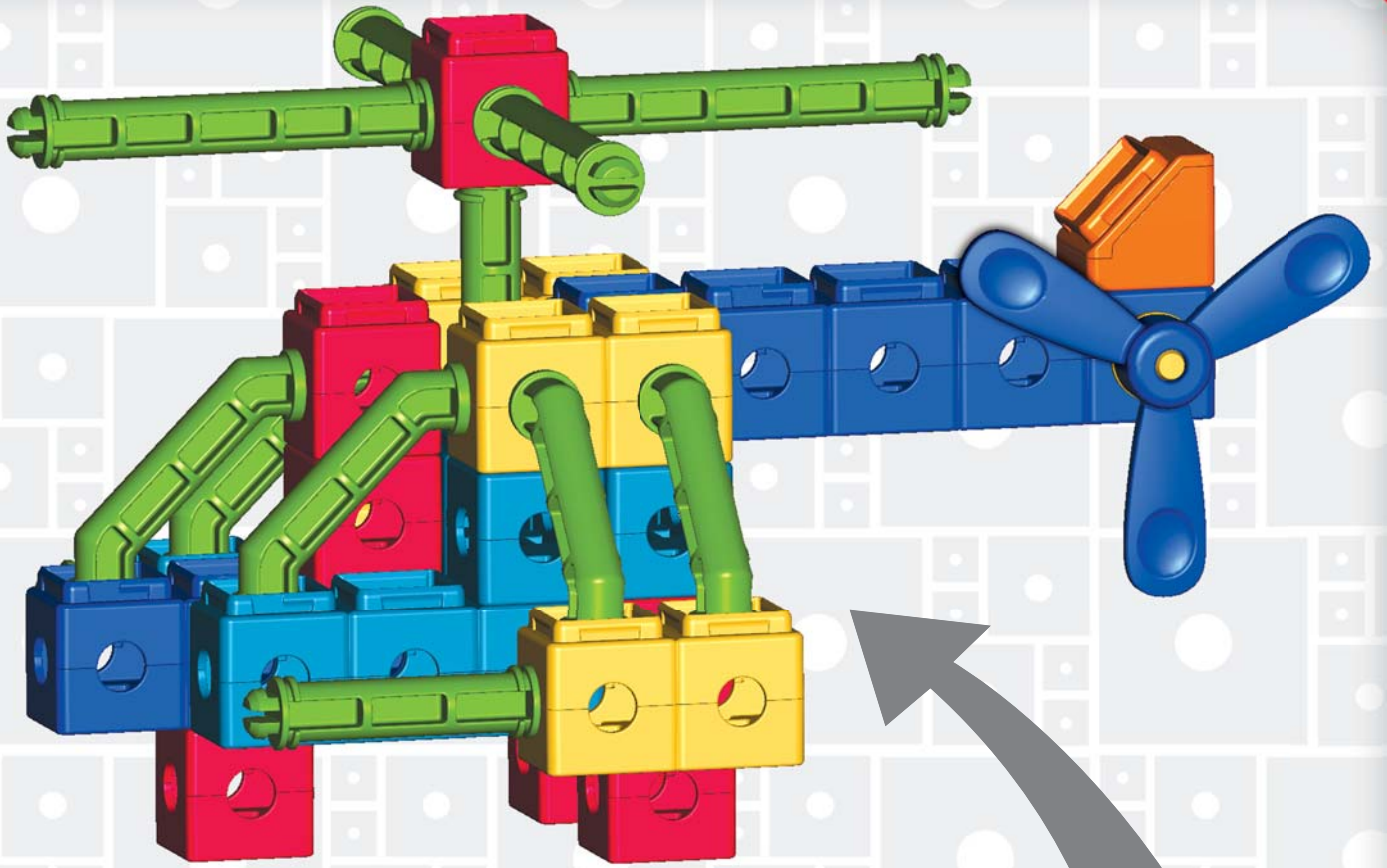
x4



x3



x7







x24



x1



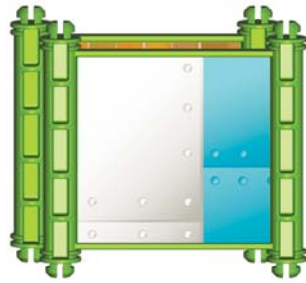
x4



x4



x4



x2



x8



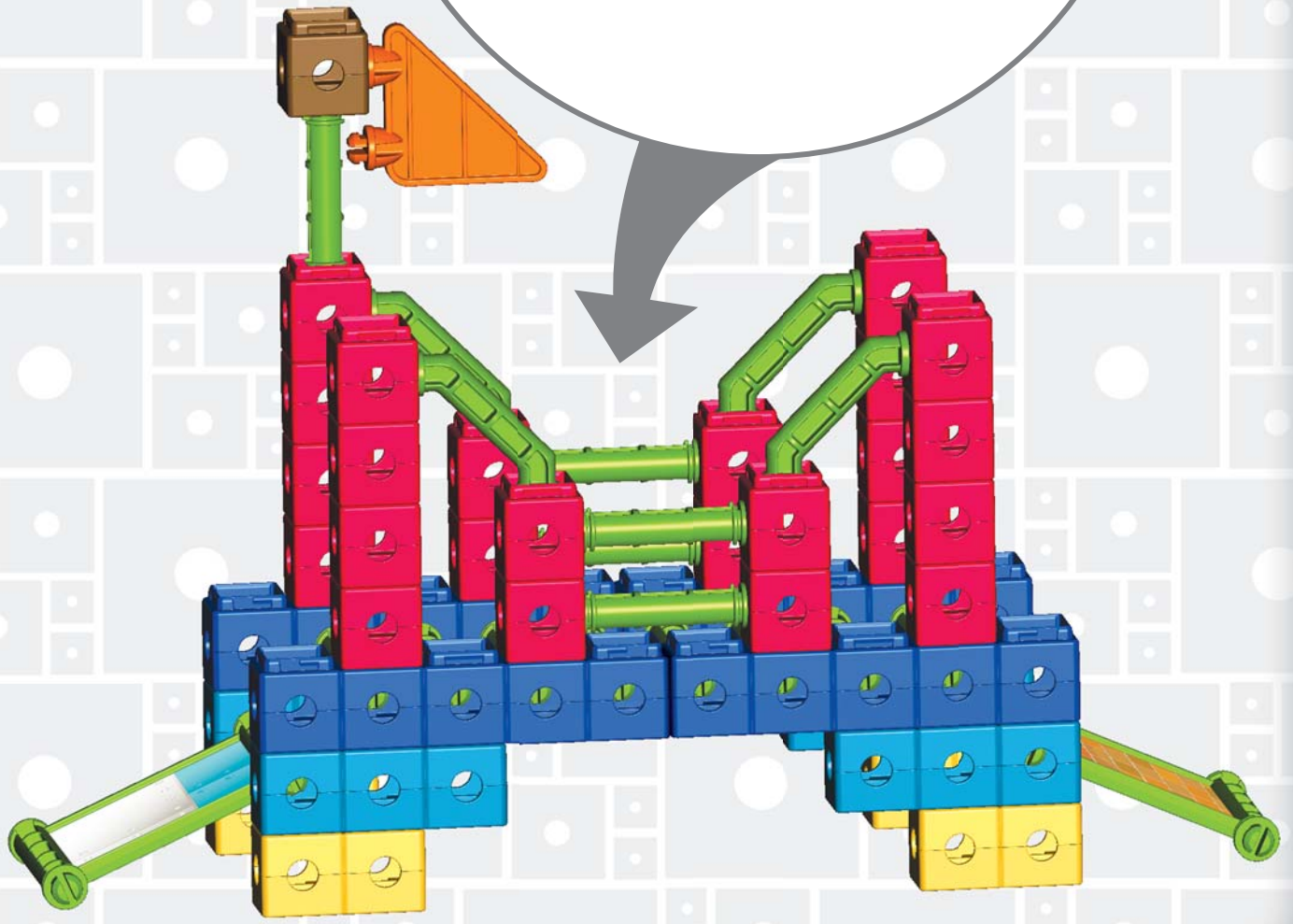
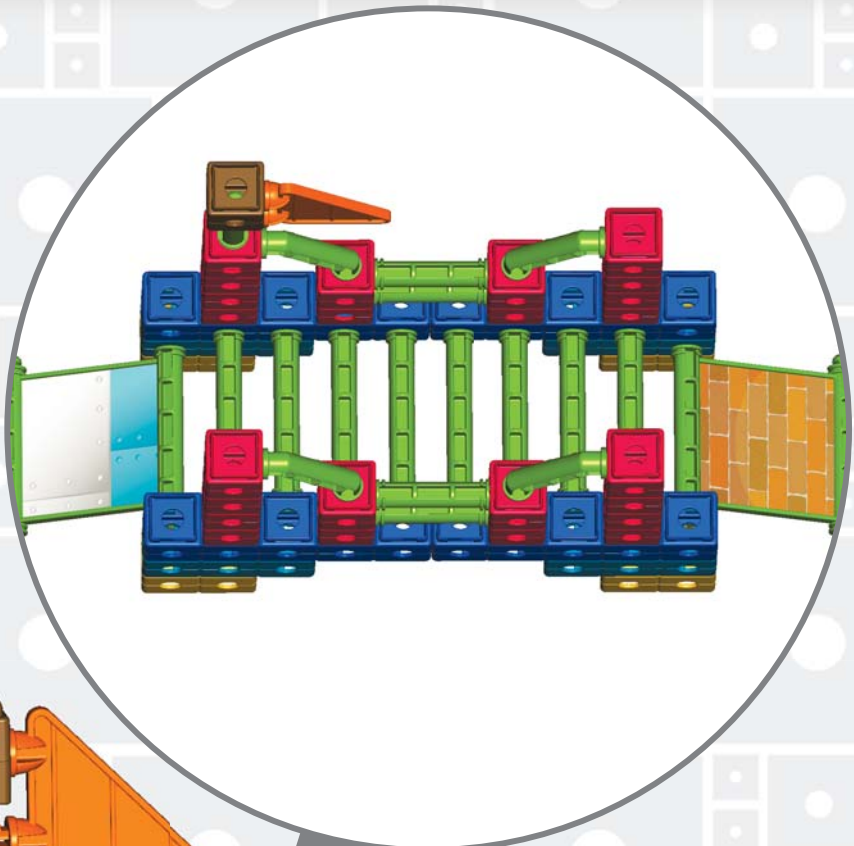
x5



x4



x1





x5



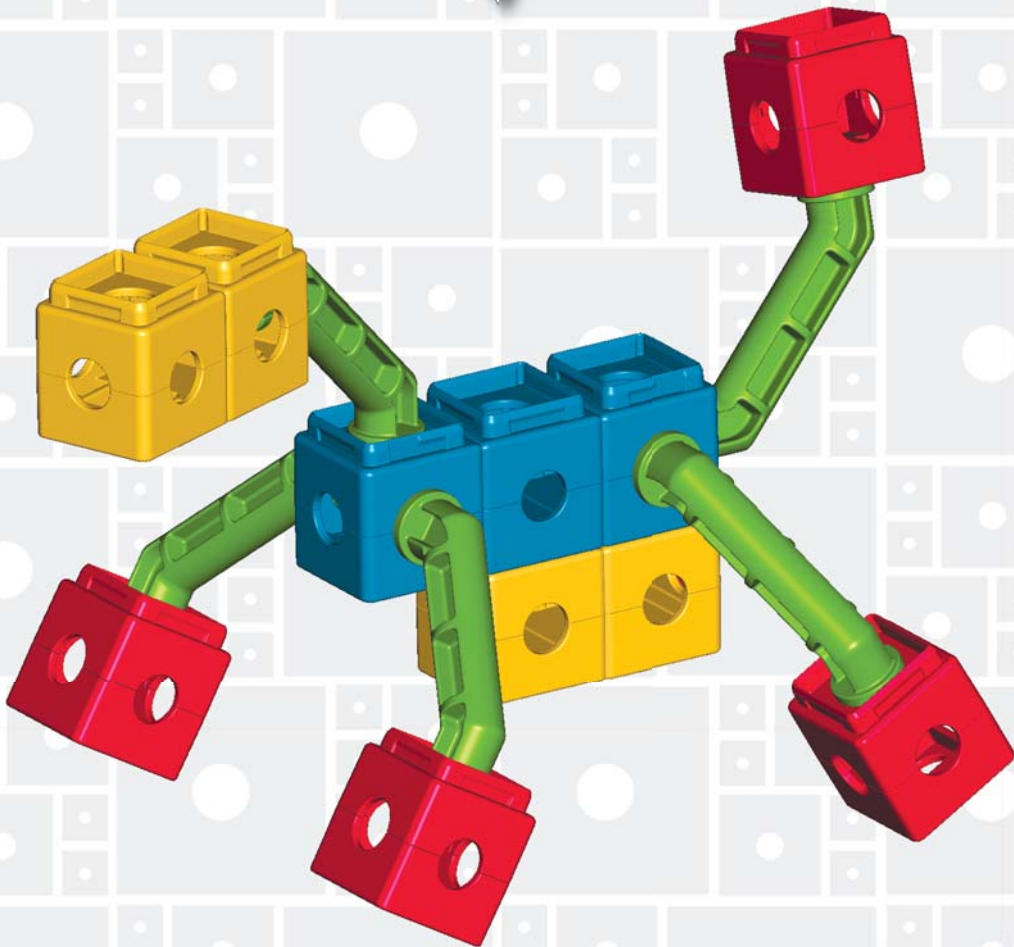
x2



x1



x6





x10



x1



x3



x2



x4



x1



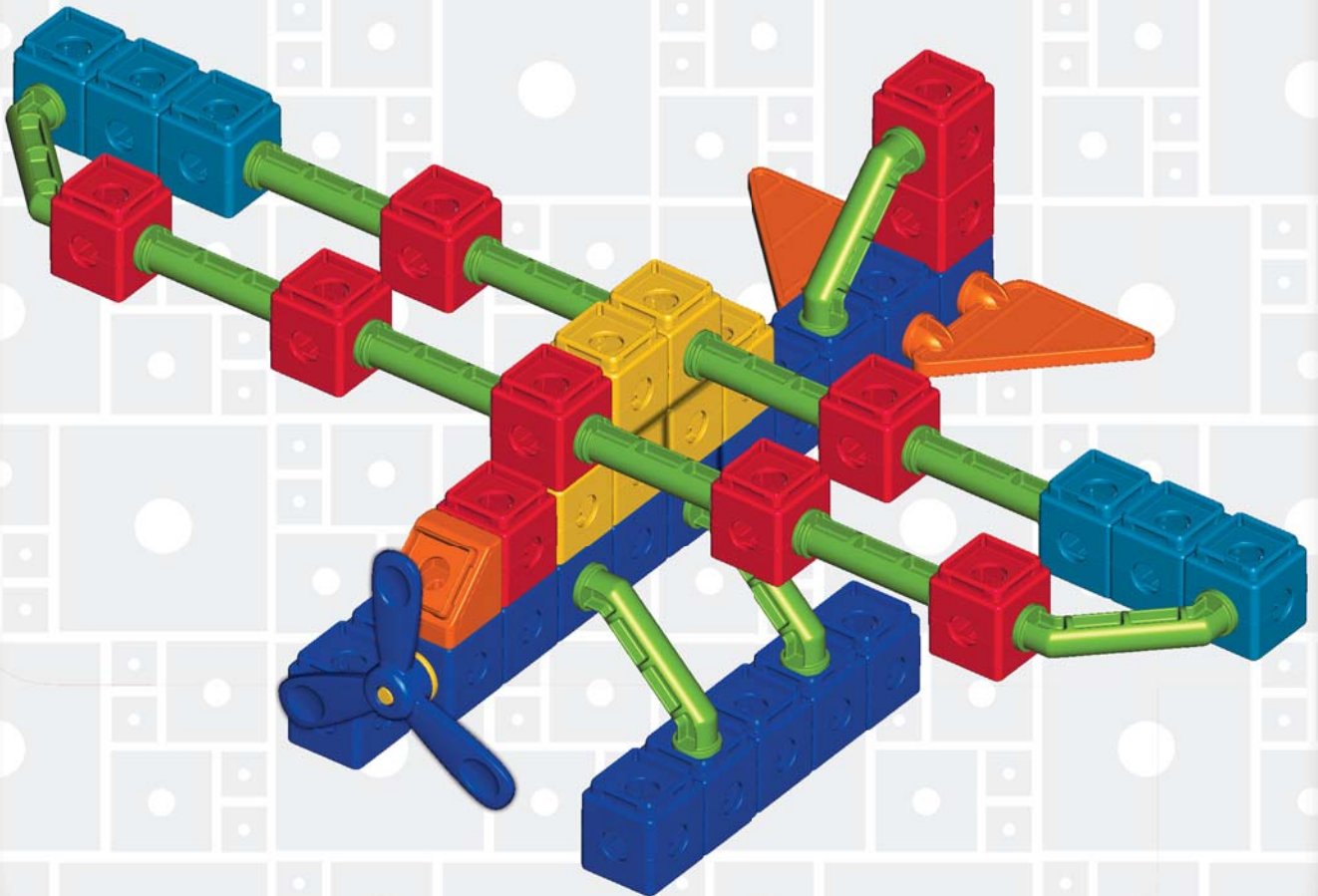
x2



x8



x7





x1



x9



x4



x2



x4



x5



x4





x7



x6



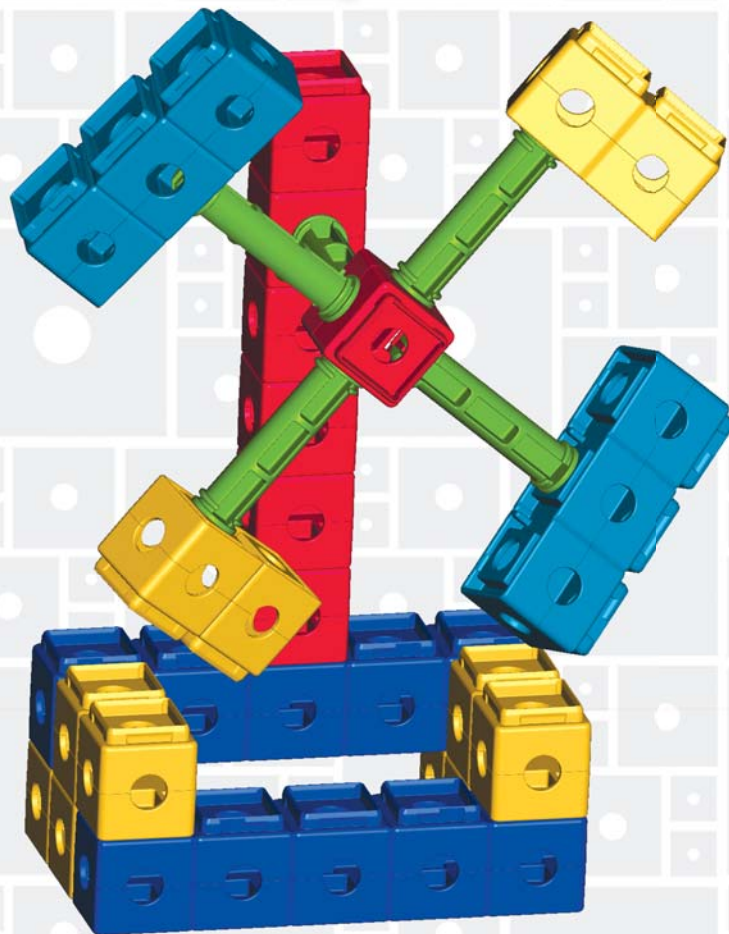
x2



x2



x5





x21



x12



x3



x4



x1



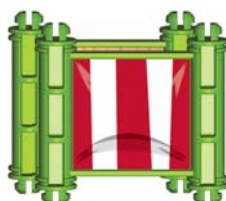
x1



x1



x1



x2



x1



x7



x16



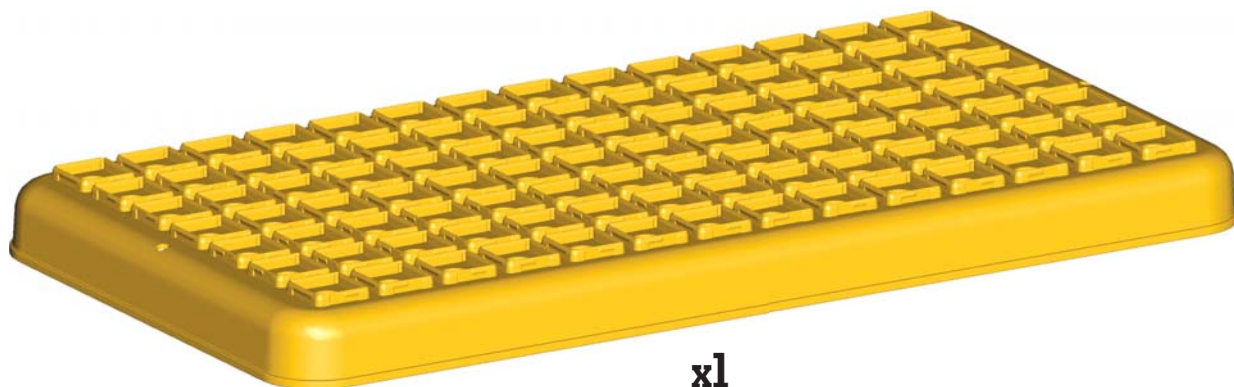
x4



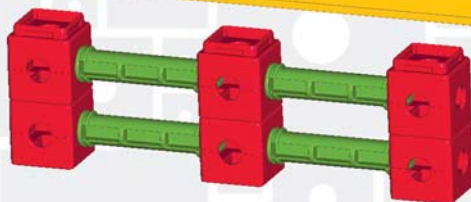
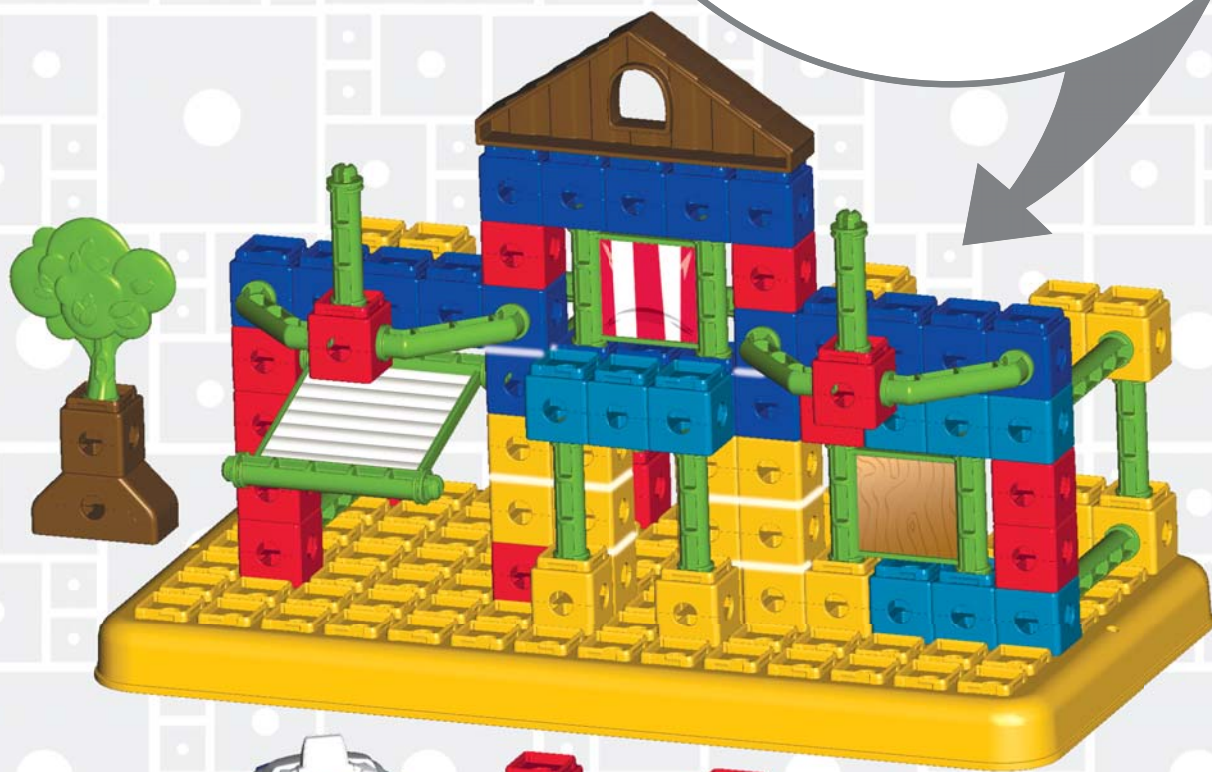
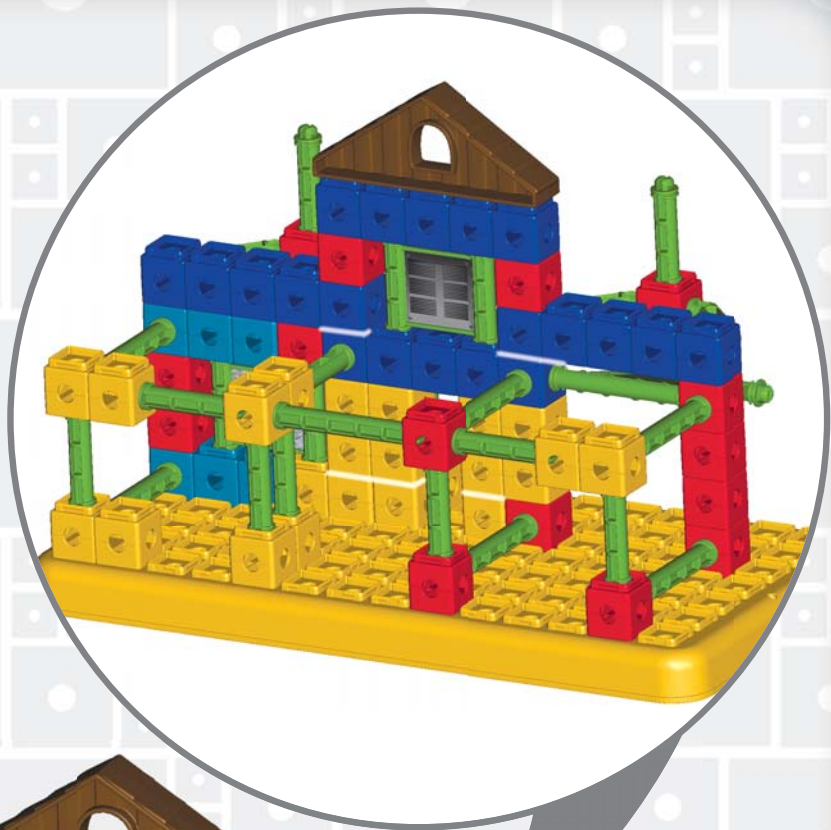
x1



x1



x1







x14



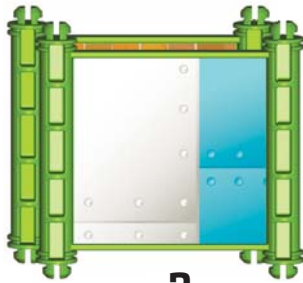
x2



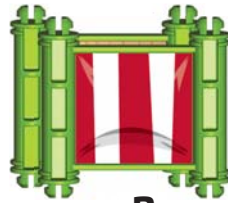
x10



x4



x2



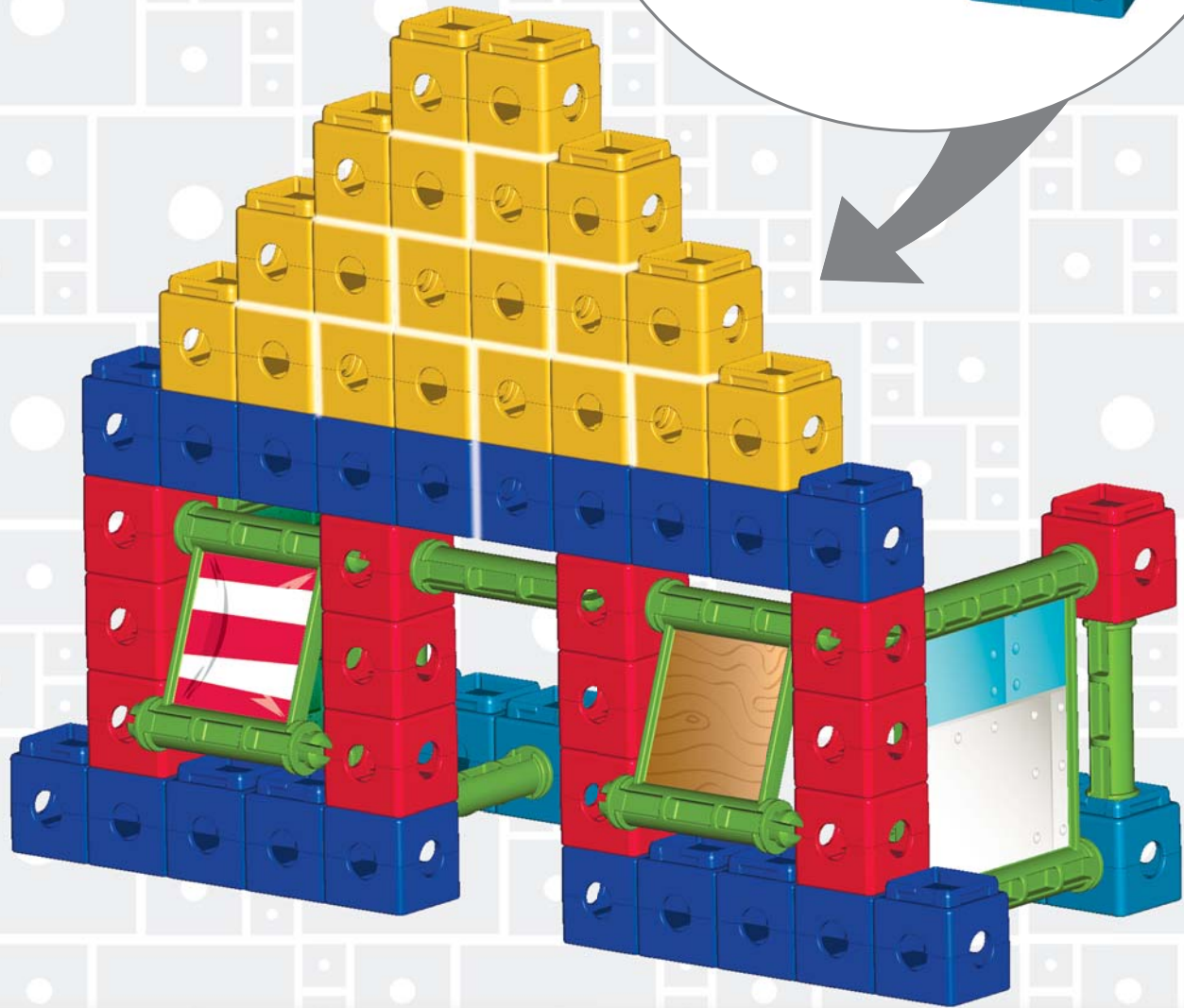
x2



x3



x2





x7



x2



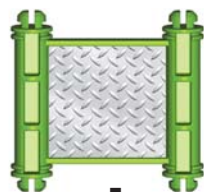
x2



x1



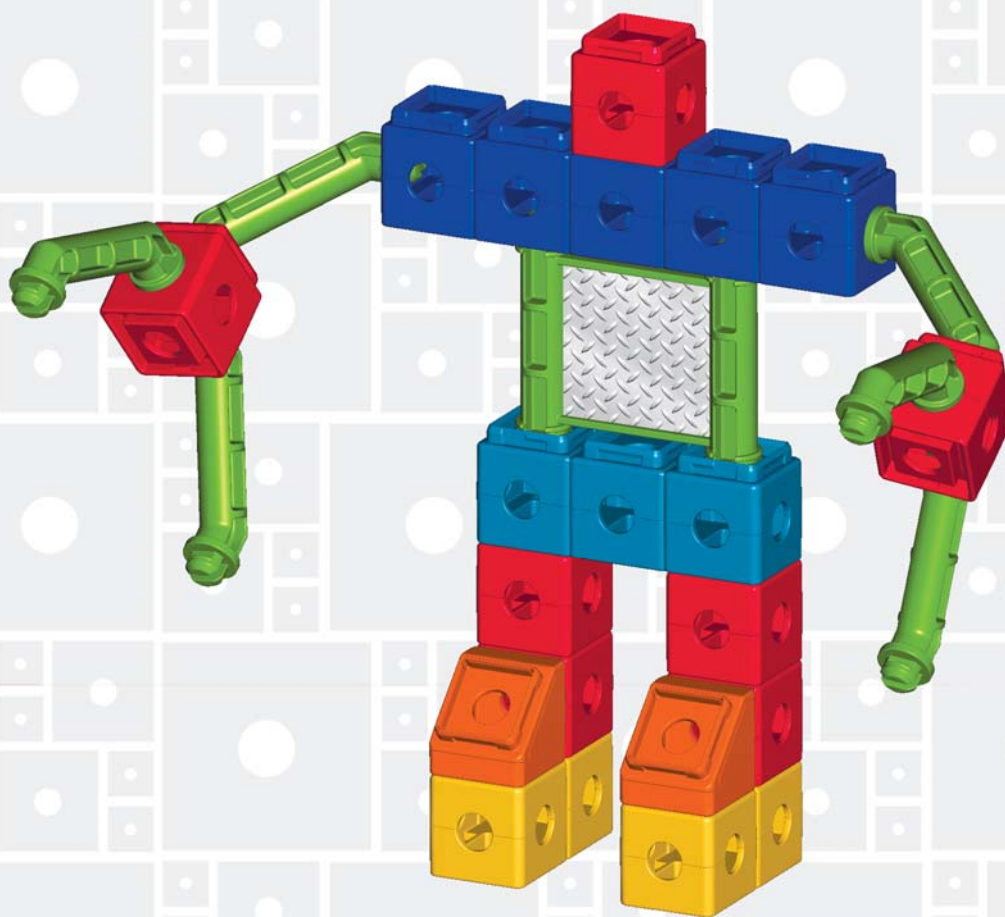
x1



x1



x6





x2



x3



x1



x2



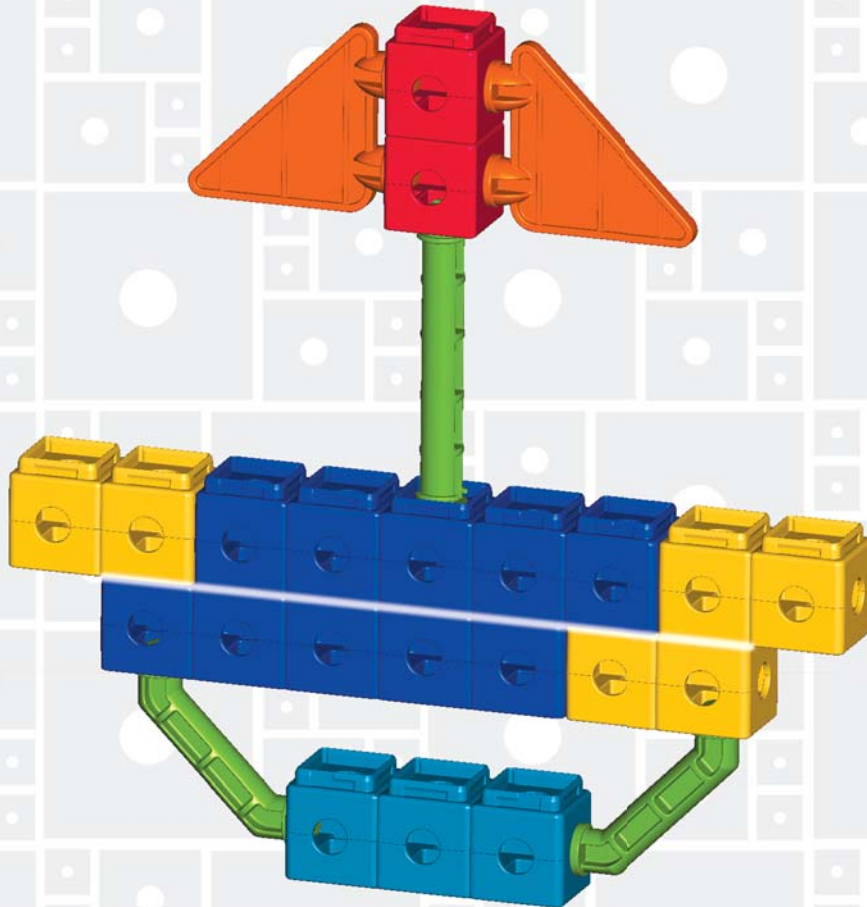
x2



x2



x1





x19



x1



x12



x5



x2



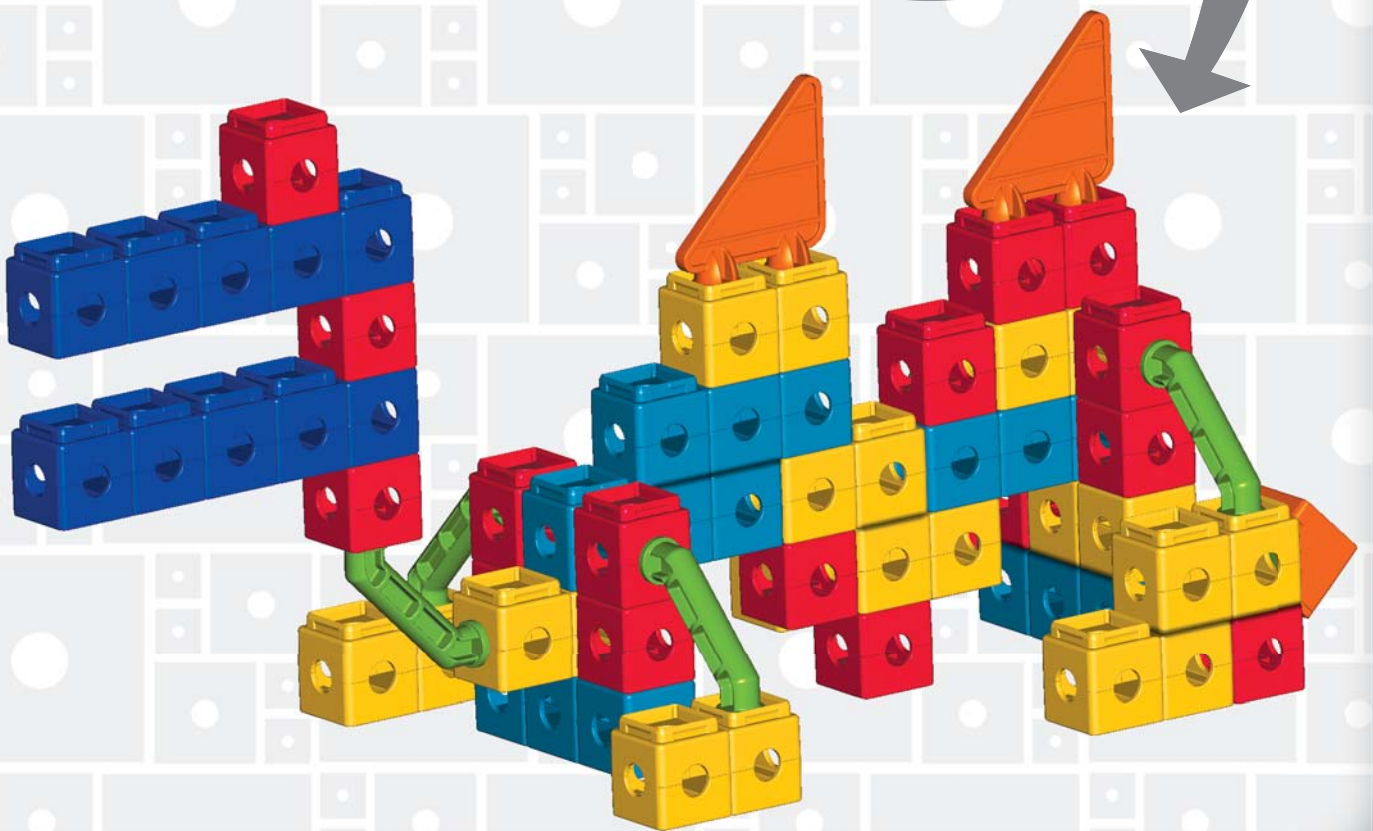
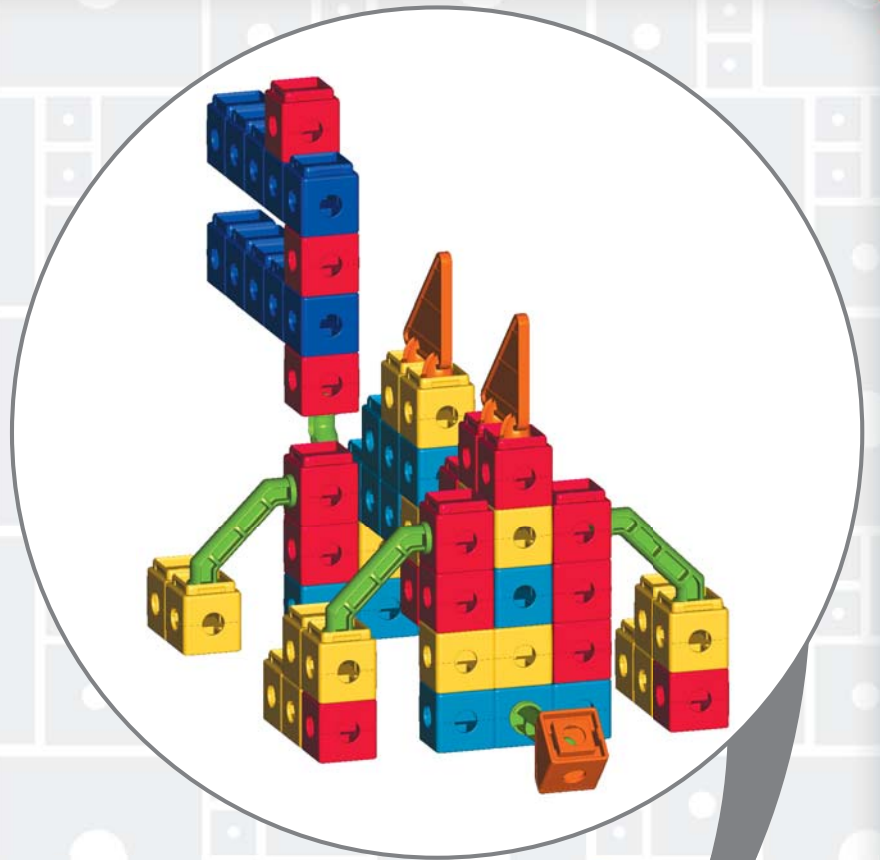
x2



x1



x5





x23



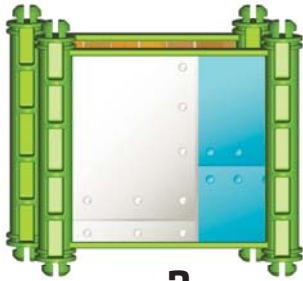
x12



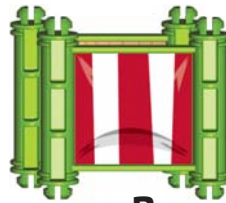
x5



x4



x2



x2



x8



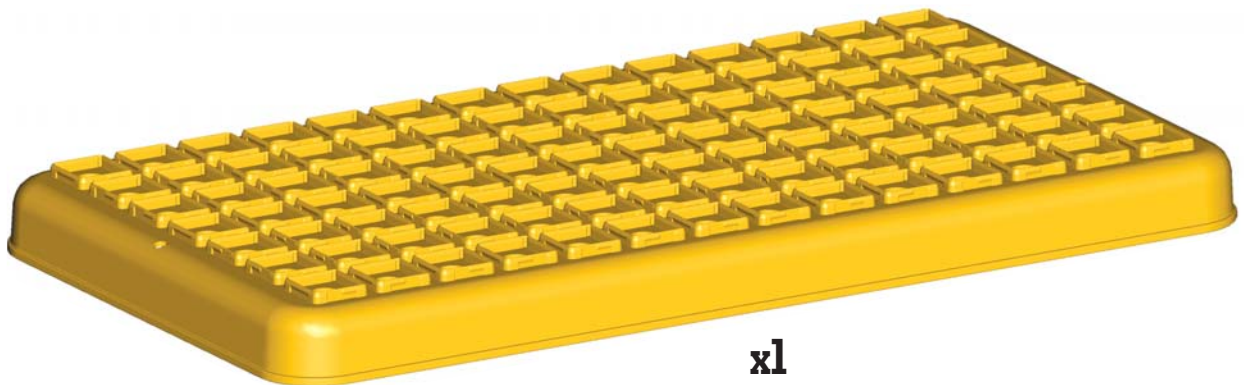
x16



x8



x2



x1

