

This is a battery-operated product.
1 flyer (0000718496) is required
to be placed inside the packaging.

INSTRUCTION SHEET
SPECIFICATIONS

Toy: TS BASIC BUZZ WING PACK
Toy No.: P8926
Part No.: 0920
Trim Size: 17.55"x8.26"
Folded Size: _____
Type of Fold: _____
colors: One
Colors: Black
Paper Stock: White Offset
Paper Weight: 70 lb.
EDM No.: _____



BUZZ LIGHTYEAR WING PACK

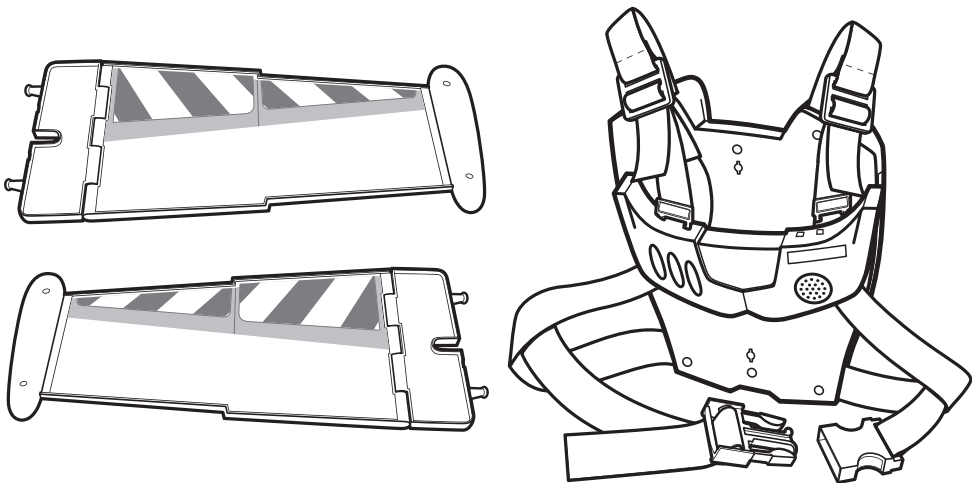
6+

INSTRUCTIONS

Please keep these instructions for future reference as they contain important information.

THIS IS NOT A FLYING TOY.

CONTENTS



Mattel, Inc. All Rights Reserved.

Mattel, Inc., 636 Girard Avenue East Aurora, NY 14052 U.S.A. Consumer Relations 1 (800) 524-8697. Retain this address for future reference. Mattel U.K. Ltd., Vanwall Business Park, Maidenhead SL6 4UB, Helpline 01628 500303. Mattel Australia Pty., Ltd., Richmond, Victoria, 3121. Consumer Advisory Service - 1300 135 312. Mattel East Asia Ltd., Room 1106, South Tower, World Finance Centre, Harbour City, Tsimshatsui, HK, China. Dimport & Diedarkan Oleh: Mattel SEA Ptd Ltd. (993532-P) Lot 13.5, 13th Floor, Menara Lien Hoe, Persiaran Tropicana Golf Country Resort, 47410 PJ, Tel: 03-78803817, Fax: 03-78803867.

P8926

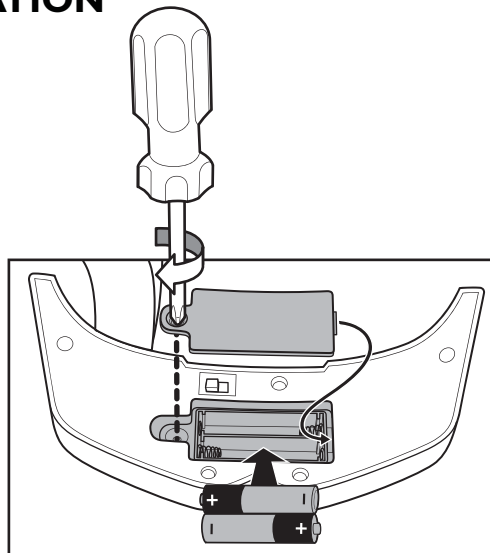


© Disney/Pixar

service.mattel.com

P8926-0920

BATTERY INSTALLATION



ADULTS NOTE: Batteries included are for demonstration purposes only

- Unscrew the battery cover with a Phillips head screwdriver (not included).
- Remove batteries included for demonstration purposes and dispose of them safely.
- Install 2 'AAA' (LR6) batteries in the orientation (+/-) shown.
- Replace battery cover and tighten screw.
- For longer life use only alkaline batteries.
- Replace the batteries if sounds play slowly or distort.

RECYCLE INFORMATION (USA ONLY)

Please recycle button cell batteries contained in this product by:

- Visiting your nearest recycling center. For location of the nearest recycling center visit us online at www.service.mattel.com.
- If a recycling center is not available in your area, contact us for a pre-paid mailing label. Visit us online at www.service.mattel.com or call toll-free at 1-800-524-8697. Valid in the US only.

BATTERY SAFETY INFORMATION

In exceptional circumstances batteries may leak fluids that can cause a chemical burn injury or ruin your product. To avoid battery leakage:

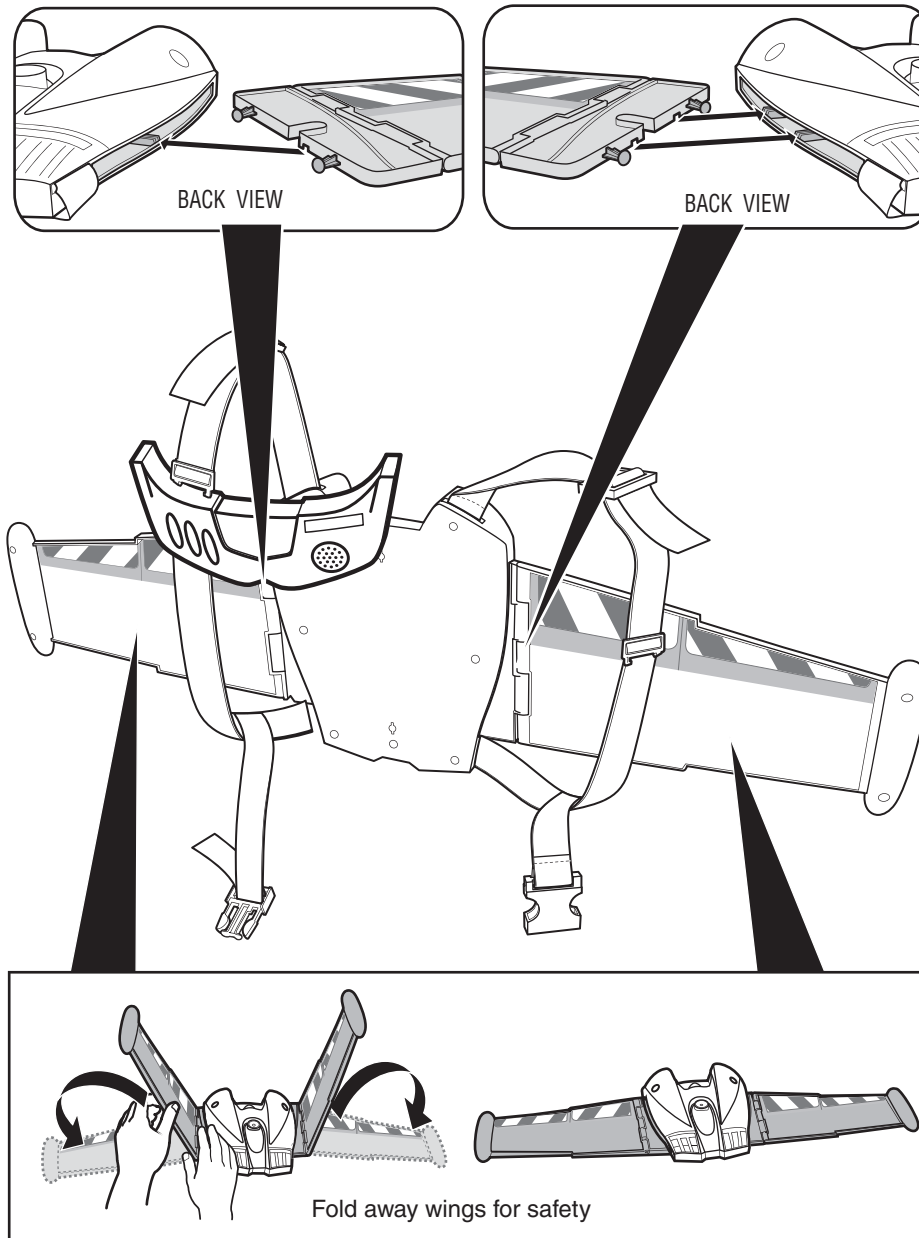
- Non-rechargeable batteries are not to be recharged.
- Rechargeable batteries are to be removed from the product before being charged (if designed to be removable).
- Rechargeable batteries are only to be charged under adult supervision (if designed to be removable).
- Do not mix alkaline, standard (carbon-zinc), or rechargeable (nickel-cadmium) batteries.
- Do not mix old and new batteries.
- Only batteries of the same or equivalent type as recommended are to be used.
- Batteries are to be inserted with the correct polarity.
- Exhausted batteries are to be removed from the product.
- The supply terminals are not to be short-circuited.
- Dispose of battery(ies) safely.
- Do not dispose of this product in a fire. The batteries inside may explode or leak.



Protect the environment by not disposing of this product with household waste (2002/96/EC).
Check your local authority for recycling advice and facilities.

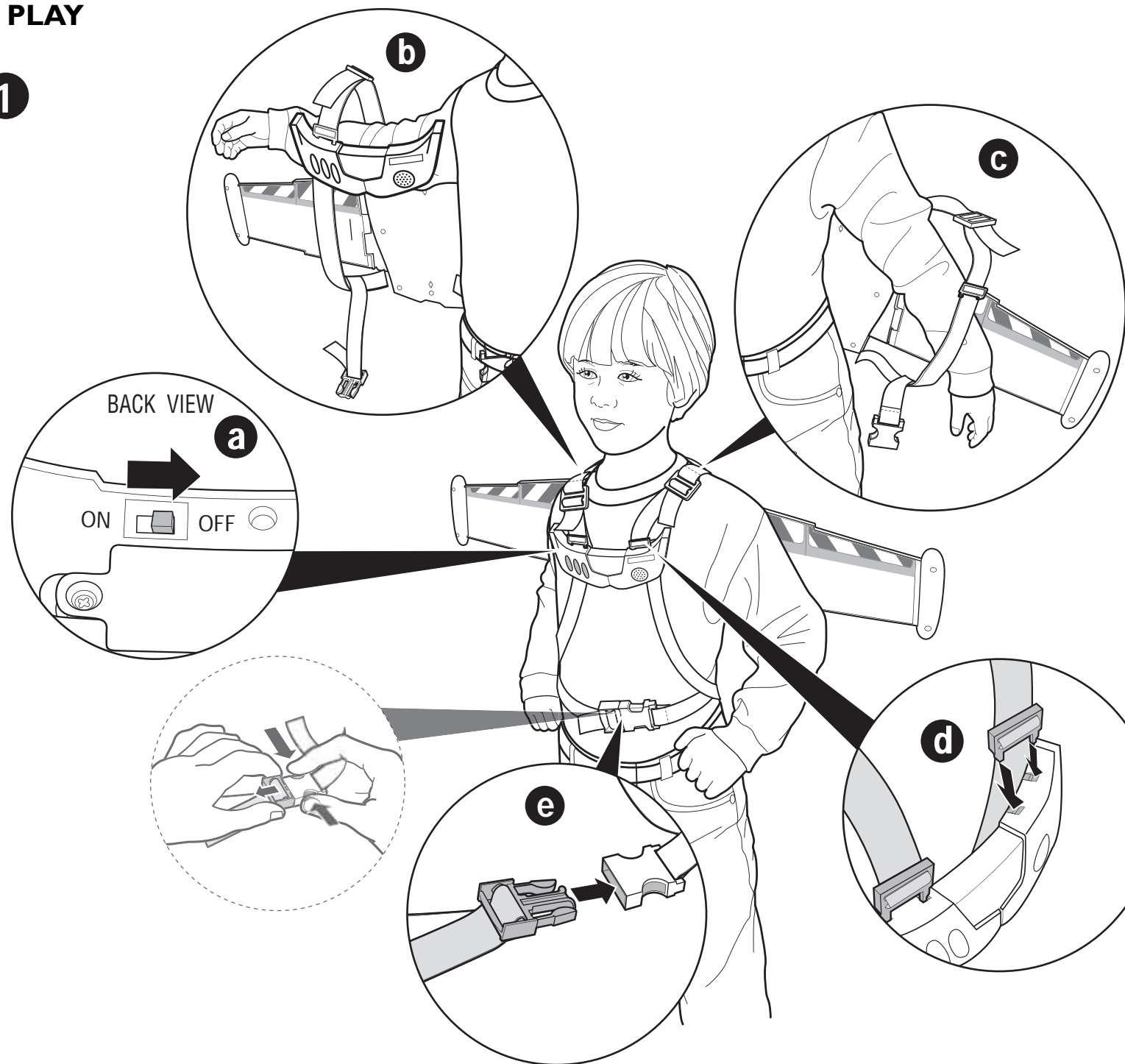
ASSEMBLY

One-time assembly

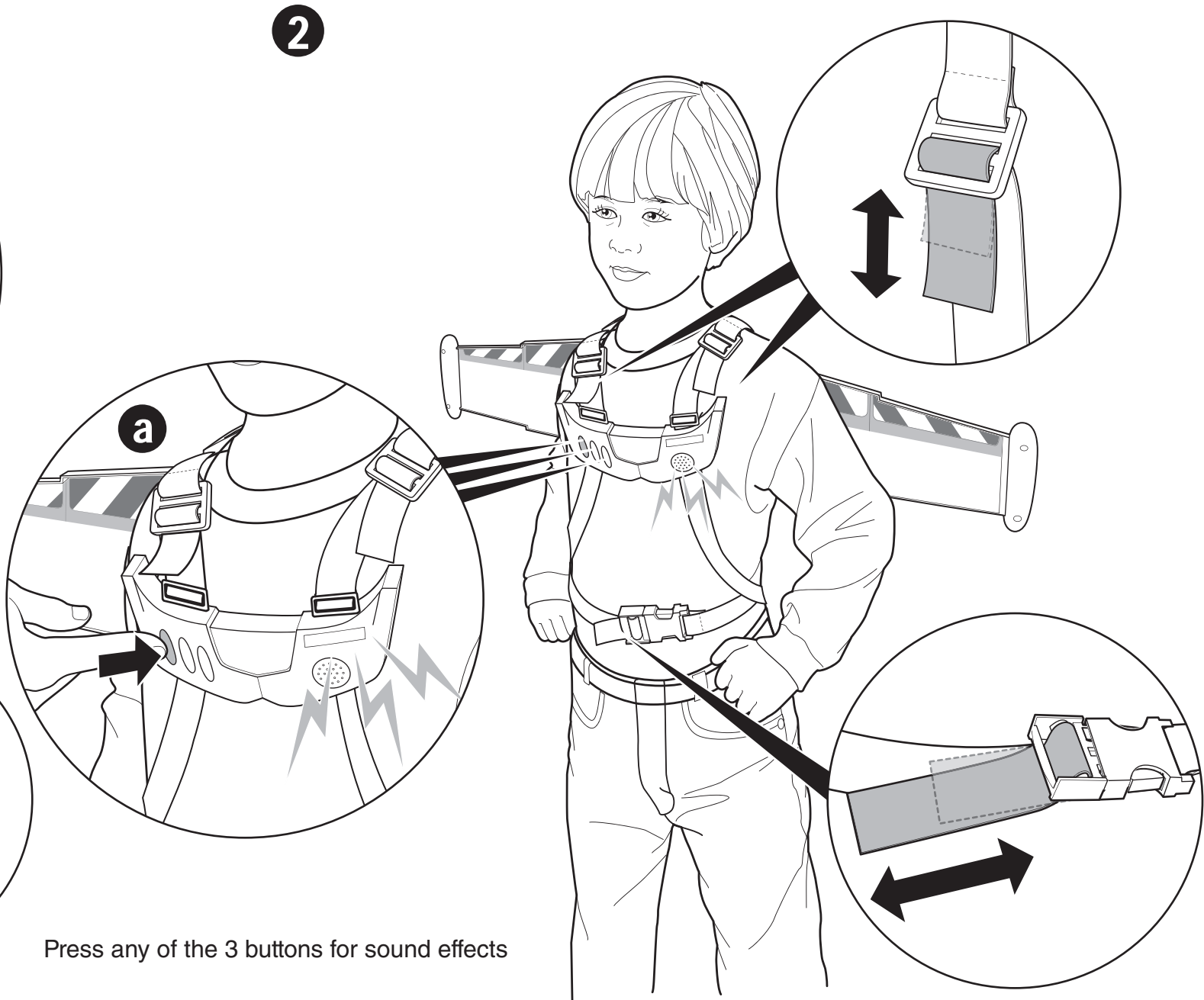


TO PLAY

1



2



Press any of the 3 buttons for sound effects