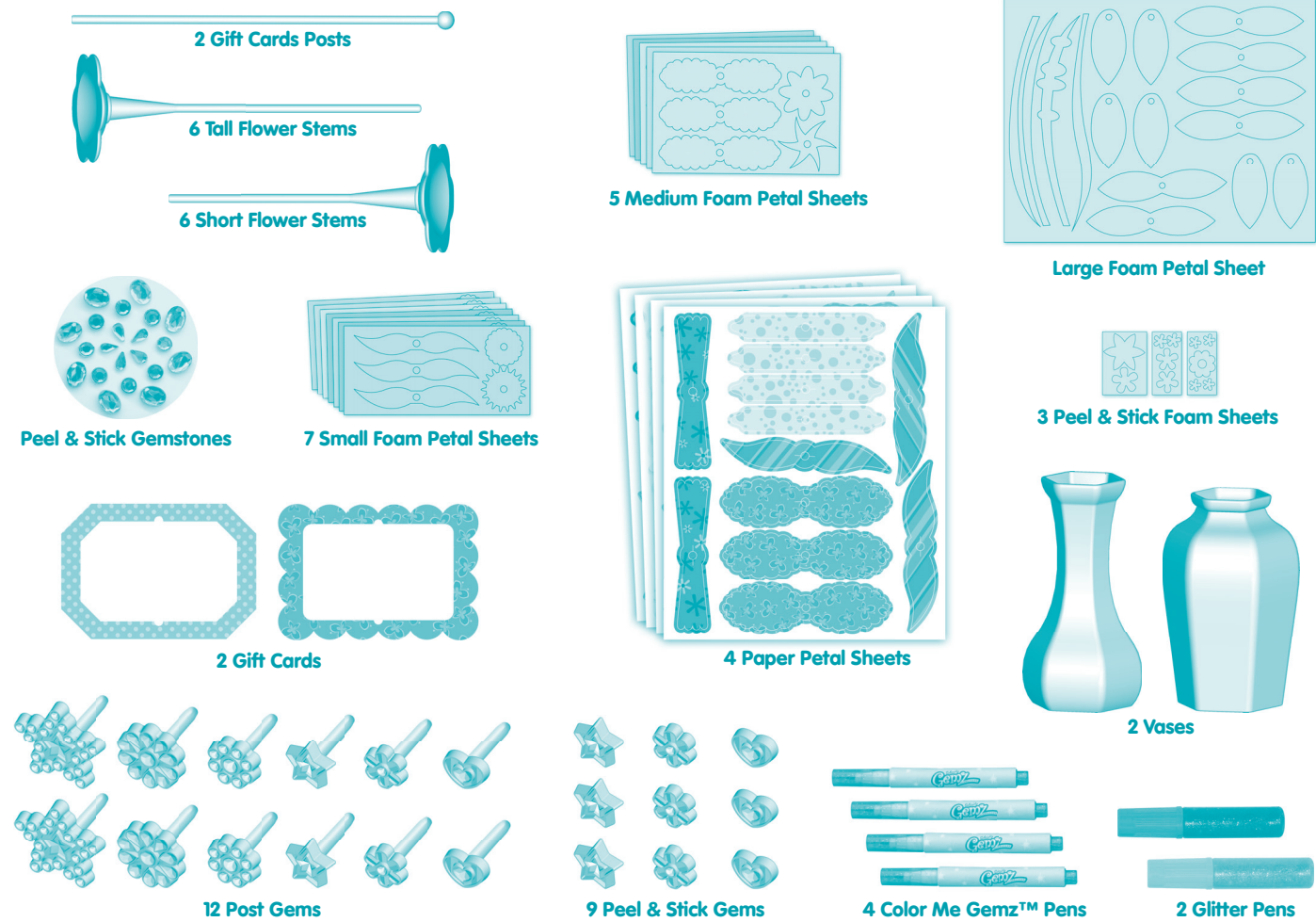




P9681

Color Me Flowerz Bouquet Maker Super Set

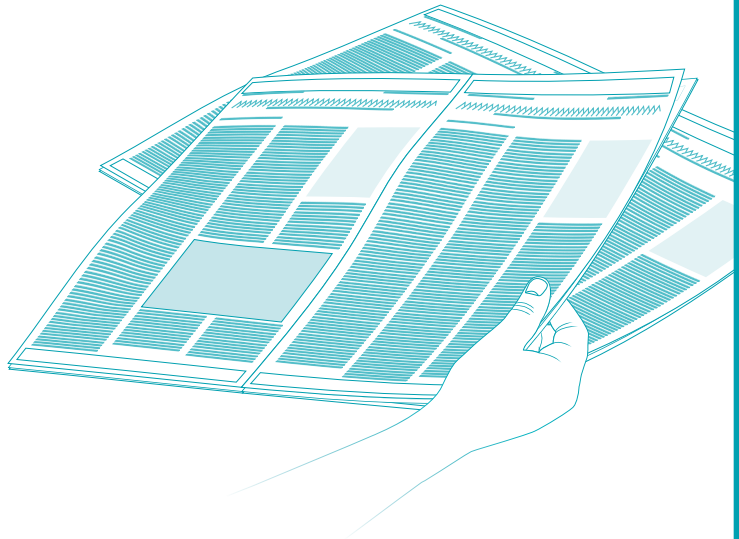
Please keep this instruction sheet for future reference, as it contains important information.



WARNING
CHOKING HAZARD – Small Parts
 Not suitable for children under 3 years.

IMPORTANT! Adult supervision is recommended. The ink in Color Me Gemz™ pen is intended to be **permanent** and will **stain** fabrics, carpet, clothing, walls and furniture. Cover all work surfaces **BEFORE** coloring gems. Some markings may be removed on surfaces using an alcohol-based hand sanitizer. We recommend that an adult apply a small amount of hand sanitizer to a paper towel, tissue or cotton swab and then wipe the stain. Be sure to test the use of hand sanitizer in an inconspicuous area first.

- The glitter glue may stain fabrics and other surfaces. Avoid contact with carpet, fabrics, clothing, walls and furniture.
- Color **ONLY** the facets on the gems. To remove markings from an unintended area on a gem, we recommend that an adult apply a small amount of an alcohol-based hand sanitizer to a paper towel, tissue or cotton swab and wipe the marking.
- To remove markings from skin, use soap and water.
- For best results, use only the Color Me Gemz™ pens to decorate the gems.
- Replace the caps on the Color Me Gemz™ pens and glitter pens after each use.



Place newspaper or another protective material on your work surface.

CONSUMER ASSISTANCE
 Call toll free: 1-800-432-5437 (US & Canada only)
 M-F 9AM to 7PM / SAT 11AM to 5PM (EST)

service.fisher-price.com

Write to us at: Fisher-Price® Consumer Relations,
 636 Girard Avenue, East Aurora, New York 14052.
 Hearing-impaired consumers using TTY/TDD equipment,
 please call 1-800-382-7470.

For countries outside the United States:

Canada: Mattel Canada Inc., 6155 Freemont Blvd.,
 Mississauga, Ontario L5R 3W2; www.service.mattel.com.

Great Britain: Mattel UK Ltd, Vanwall Business Park,
 Maidenhead SL6 4UB. Helpline: 01628 500303.
www.service.mattel.com/uk

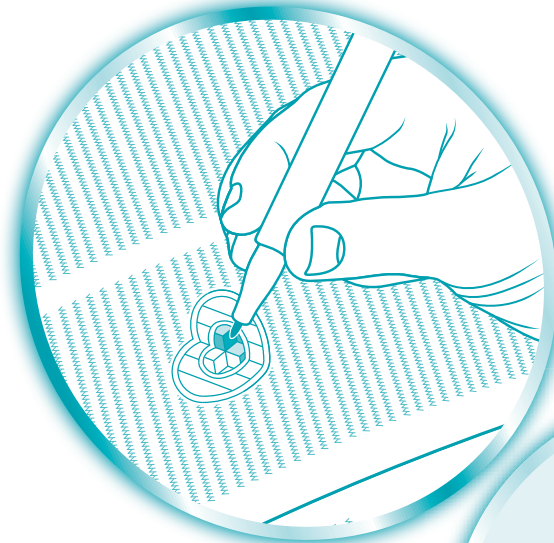
Australia: Mattel Australia Pty. Ltd., 658 Church Street,
 Locked Bag #870, Richmond, Victoria 3121 Australia.
 Consumer Advisory Service 1300 135 312.

New Zealand: 16-18 William Pickering Drive,
 Albany 1331, Auckland.

Asia: Mattel East Asia Ltd, Room 1106, South Tower,
 World Finance Centre, Harbour City, Tsimshatsui, HK, China.

Fisher-Price, Inc., a subsidiary of Mattel, Inc.,
 East Aurora, New York 14052, U.S.A.
 ©2009 Mattel, Inc. All Rights Reserved. © and ™
 designate U.S. trademarks of Mattel, Inc.

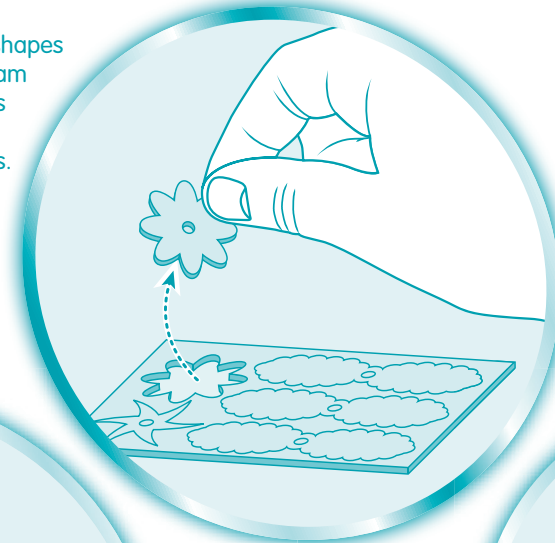
1. Use the tip of the Color Me Gemz™ pen to color the facets of the gem.



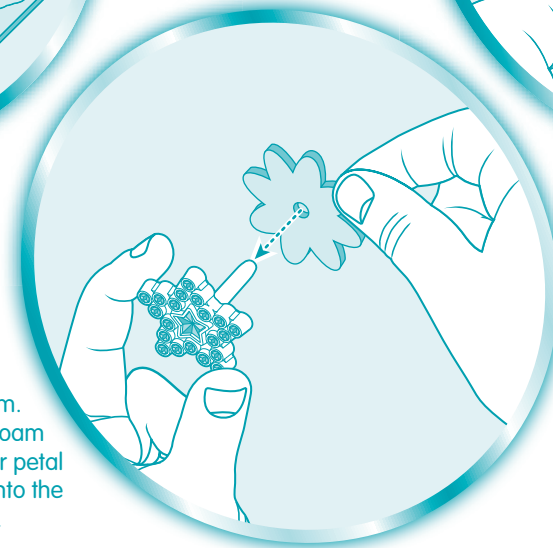
2. Decorate the peel & stick gems. Peel the backing from a gem. Dispose of the backing in the garbage. Press the gem onto one of the vases. For best results, do not remove the gem after it has been applied to the vase



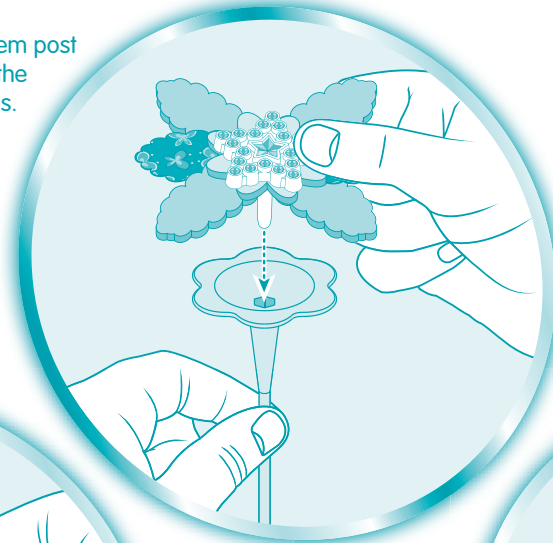
3. Punch out shapes from the foam petal sheets and paper petal sheets.



4. Decorate a post gem. Slide the foam and paper petal shapes onto the gem post.



5. Insert the gem post into one of the holes in the flower stems.



6. Place the gem flower into a vase.



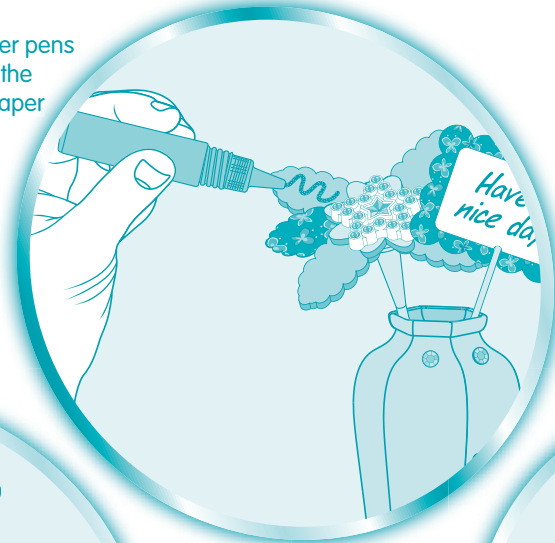
7. Decorate or write a message on one of the gift cards. Insert one of the gift card posts through the holes in the gift card.



8. Peel the backing from the peel & stick gemstones and peel & stick foam pieces. Dispose of the backing in the garbage. Press the gemstones and foam pieces onto the vases.



9. Use the glitter pens to decorate the foam and paper shapes.



10. When finished, be sure to replace the cap on each Color Me Gemz™ and glitter pen.

