

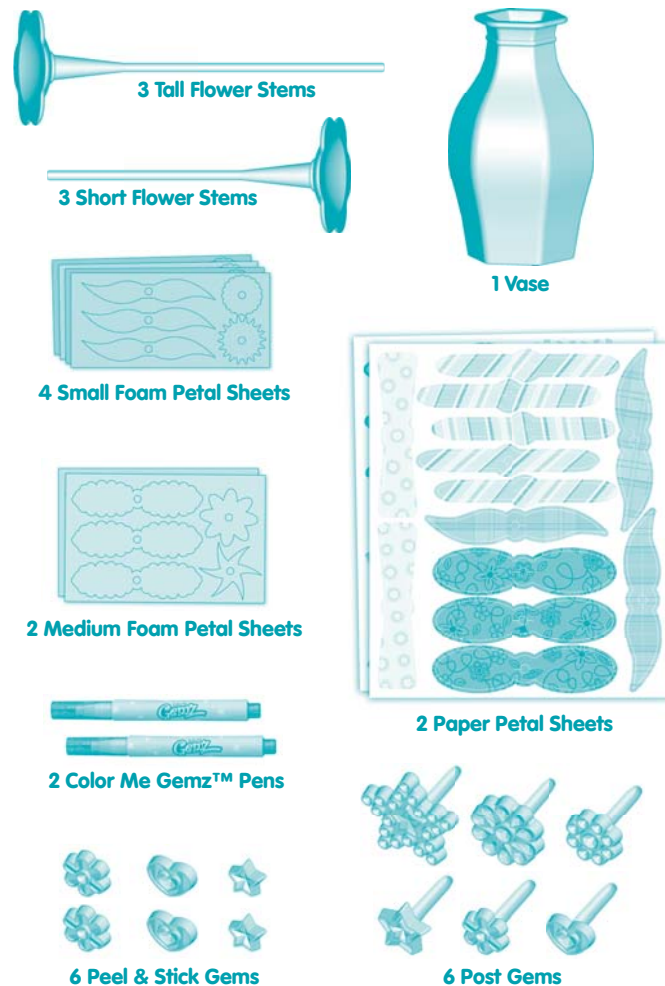


P9684

Color Me Flowerz Bouquet Maker

Please keep this instruction sheet for future reference,
as it contains important information.

colormegemz.com



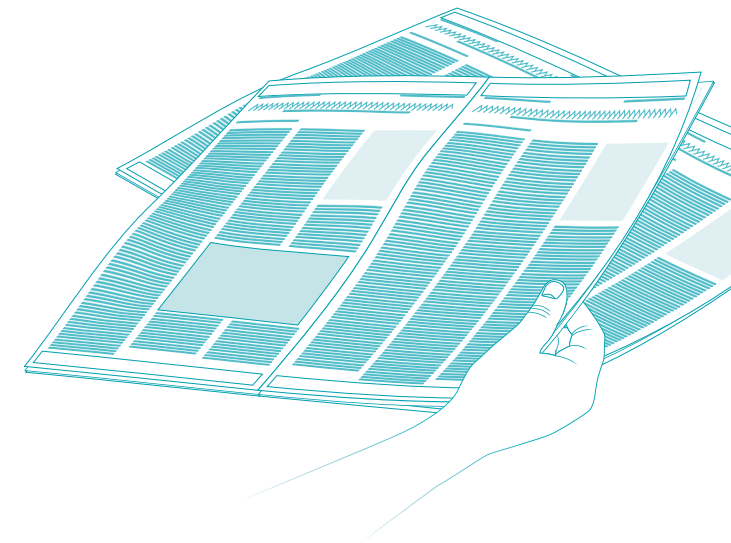
⚠ WARNING

CHOKING HAZARD – Small Parts

Not suitable for children under 3 years.

IMPORTANT! Adult supervision is recommended. The ink in Color Me Gemz™ pens is intended to be **permanent** and will **stain** fabrics, carpet, clothing, walls and furniture. Cover all work surfaces **BEFORE** coloring gems. Some markings may be removed on surfaces using an alcohol-based hand sanitizer. We recommend that an adult apply a small amount of hand sanitizer to a paper towel, tissue or cotton swab and then wipe the stain. Be sure to test the use of hand sanitizer in an inconspicuous area first.

- Color **ONLY** the facets on the gems. To remove markings from an unintended area on a gem, we recommend that an adult apply a small amount of an alcohol-based hand sanitizer to a paper towel, tissue or cotton swab and wipe the marking.
- To remove markings from skin, use soap and water.
- For best results, use only the Color Me Gemz™ pens to decorate the gems.
- Replace the caps on the Color Me Gemz™ pens after each use.



- Place newspaper or another protective material on your work surface.

2 CONSUMER ASSISTANCE

Call toll free: 1-800-432-5437 (US & Canada only)
M-F 9AM to 7PM / SAT 11AM to 5PM (EST)

service.fisher-price.com

Write to us at: Fisher-Price® Consumer Relations,
636 Girard Avenue, East Aurora, New York 14052.

Hearing-impaired consumers using TTY/TDD equipment,
please call 1-800-382-7470.

For countries outside the United States:

Canada: Mattel Canada Inc., 6155 Freemont Blvd.,
Mississauga, Ontario L5R 3W2; www.service.mattel.com.

Great Britain: Mattel UK Ltd, Vanwall Business Park,
Maidenhead SL6 4UB. Helpline: 01628 500303.
www.service.mattel.com/uk

Australia: Mattel Australia Pty. Ltd., 658 Church Street,
Locked Bag #870, Richmond, Victoria 3121 Australia.
Consumer Advisory Service 1300 135 312.

New Zealand: 16-18 William Pickering Drive,
Albany 1331, Auckland.

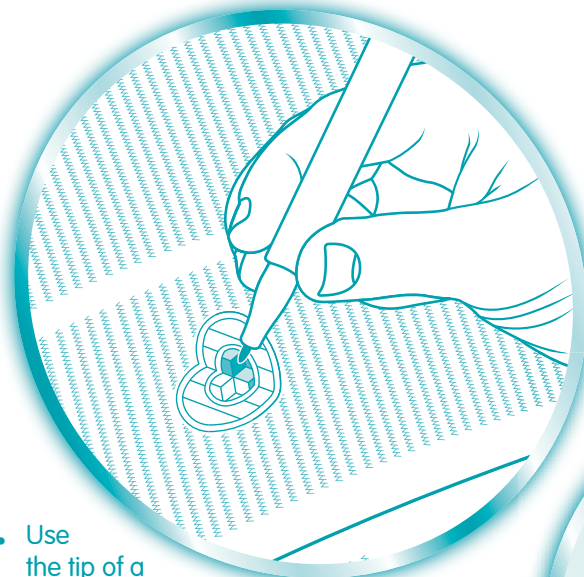
Asia: Mattel East Asia Ltd, Room 1106, South Tower,
World Finance Centre, Harbour City, Tsimshatsui, HK, China.

Fisher-Price, Inc., a subsidiary of Mattel, Inc.,
East Aurora, New York 14052, U.S.A.
©2009 Mattel, Inc. All Rights Reserved. © and ™
designate U.S. trademarks of Mattel, Inc.

PRINTED IN CHINA

P9684pr-0920

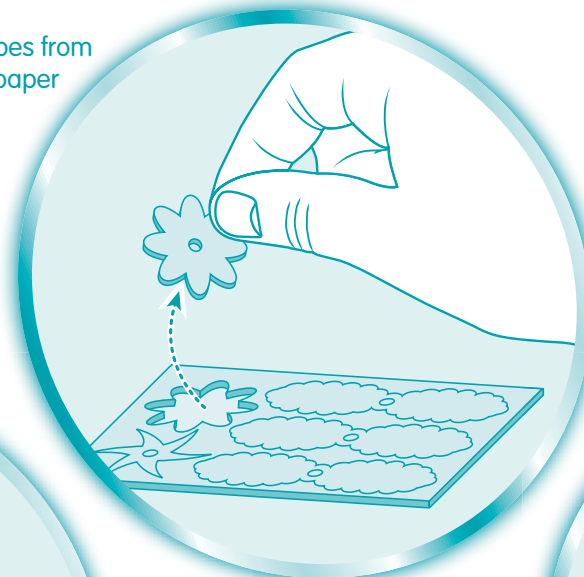
- 1.** Use the tip of a Color Me Gemz™ pen to color the facets of a gem.



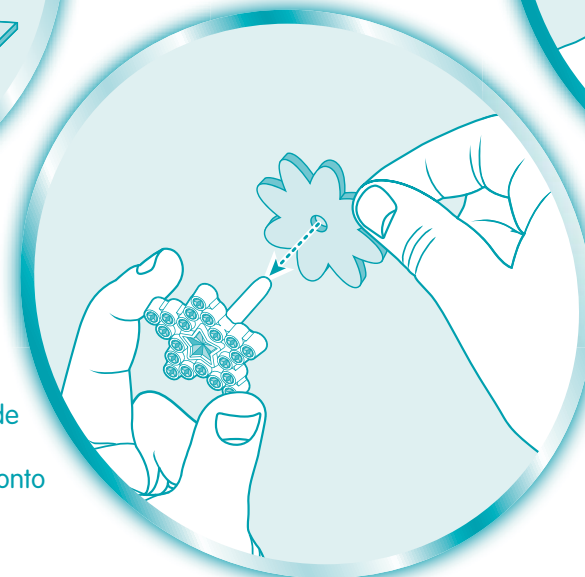
- 2.** Decorate the peel & stick gems. Peel the backing from a gem. Dispose of the backing in the garbage. Press the gem onto the vase. For best results, do not remove the gem after it has been applied to the vase.



- 3.** Punch out shapes from the foam and paper petal sheets.



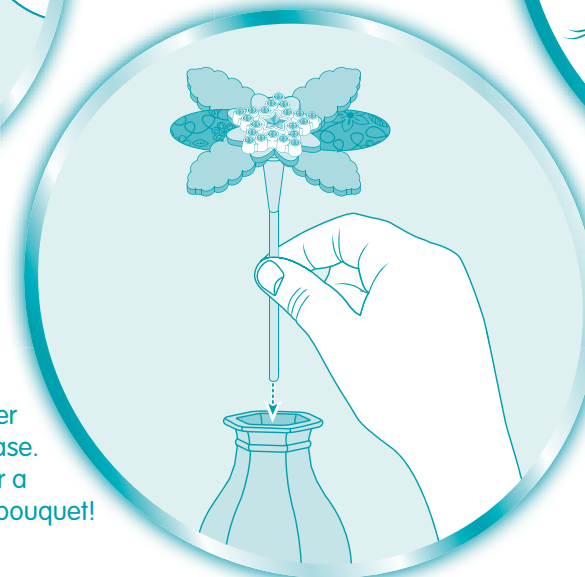
- 4.** Decorate a gem post. Slide the foam and paper petals onto the gem post.



- 5.** Insert the gem post into a flower stem.



- 6.** Place the gem flower into the vase. Repeat for a beautiful bouquet!



- 7.** When finished, be sure to replace the cap on each Color Me Gemz™ pen.

