

This is a battery-operated product. 1 flyer (00007-1849G5) is required to be placed inside the packaging.

LOADING, EATING & DUMPING MODE

Place something into his trash compartment.

1. **2.** **3.** **4.** **5.** **6.** **7.** **8.** **9.**

More! More! Give me more!!

Feed me!

Place something in his mouth.

Can you give me a hand?

Release the garbage!

SIDE VIEW

SIDE VIEW

SIDE VIEW

SLEEP / WAKE MODE

1. If you leave Stinky™ alone for too long, he will fall asleep.

2. To wake Stinky™ up, press his smoke stack repeatedly or push him around.

Anybody there?



STINKY™ THE GARBAGE TRUCK
INSTRUCTIONS

Please keep these instructions for future reference as they contain important information.

CONTENTS | 3+

Not intended for outdoor use. Sand, dirt and water will cause malfunction.

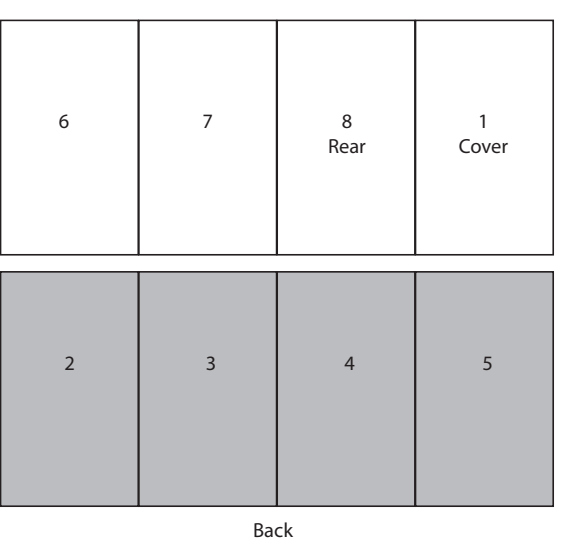
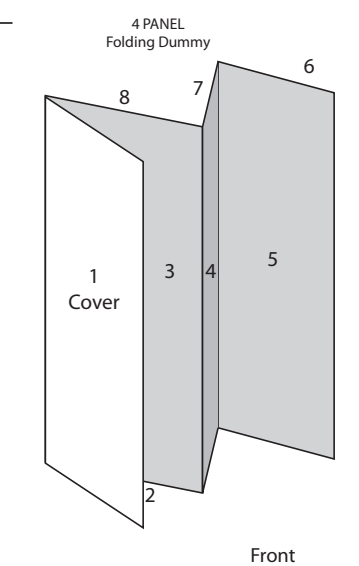
Stinky™ the Garbage Truck is your interactive buddy. He can do lots of different things:

1. Speak
2. Sing
3. Eat
4. Load & Dump
5. React

Requires 4 "C" alkaline batteries. Batteries included are for demonstration purposes.

R0858-0920G1

© 2010 Mattel, Inc. All Rights Reserved. Mattel, Inc. 636 Girard Avenue, East Aurora, NY 14052, U.S.A. Consumer Relations 1-800-524-8697. Mattel Canada Inc., Mississauga, Ontario L5R 3W2. You may call us free at 1-800-524-8697. Mattel U.K. Ltd., Vanwall Business Park, Maidenhead SL6 4UB. Helpline 01628 500303. Mattel Australia Pty. Ltd., Richmond, Victoria, 3121. Consumer Advisory Service - 1300 135 312. Mattel East Asia Ltd., Room 1106, South Tower, World Finance Centre, Harbour City, Tsimshatsui, HK, China. Dimport & Diederik Ooh: Mattel SEA Ptd Ltd (993532-P) Lot 13.5, 13th Floor, Menara Lien Hoe, Persiaran Tropicana Golf Country Resort, 47410 P1. Tel:03-78803817, Fax:03-78803867. SERVICE.MATTEL.COM



BATTERY INSTALLATION / REPLACEMENT

BOTTOM VIEW

- Remove battery cover with a Phillips head screwdriver (not included).
- Remove batteries included for demonstration purposes and dispose of them safely.
- Install 4 new "C" alkaline batteries in the orientation (+/-) shown.
- Replace battery cover and tighten screw.
- Replace the batteries if the product does not function properly.

BATTERY SAFETY INFORMATION

In exceptional circumstances batteries may leak fluids that can cause a chemical burn injury or ruin your product. To avoid battery leakage:

- Non-rechargeable batteries are not to be recharged.
- Rechargeable batteries are to be removed from the product before being charged (if designed to be removable).
- Rechargeable batteries are only to be charged under adult supervision (if designed to be removable).
- Do not mix alkaline, standard (carbon-zinc), or rechargeable (nickel-cadmium) batteries.
- Do not mix old and new batteries.
- Only batteries of the same or equivalent type as recommended are to be used.
- Batteries are to be inserted with the correct polarity.
- Exhausted batteries are to be removed from the product.
- The supply terminals are not to be short-circuited.
- Dispose of battery(ies) safely.
- Do not dispose of this product in a fire. The batteries inside may explode or leak.

Protect the environment by not disposing of this product with household waste [2002/96/EC]. Check your local authority for recycling advice and facilities.

PUSH / PULL MODE

1. **2.** **3.**

Push Stinky™ forward or pull him backward to activate lights and sounds.

Hi I'm Stinky™. Are you?

SIDE VIEW

BACK VIEW

On
Off
Try-Me

SPEAKING MODE

1. Press the smoke stack repeatedly to hear his different phrases.

2. Pull the smoke stack for more phrases.

3. Stinky™ also responds when you open the rear door or press his belly button.

4.

Excuse me!

Har har that tickles!

SINGING MODE

1. Push the smoke stack repeatedly till you hear Stinky™ say "Make some noise if you want me to sing!"

2.

3.

4.

Make some noise if you want me to sing!

Great job, give me a high five!